



**Professional manufacturer of
vertical solutions for 36+ years**

Shenxi Machinery Co., Ltd

Add: 121 Furongyi Road, Xishan District,
Wuxi City, P.R.China
Tel : 86-510-88215261
Fax: 86-510-88215261
Website: www.shenxi.com
E-mail: export@shenxi.com



SHENXI

www.shenxi.com

Established in 1988



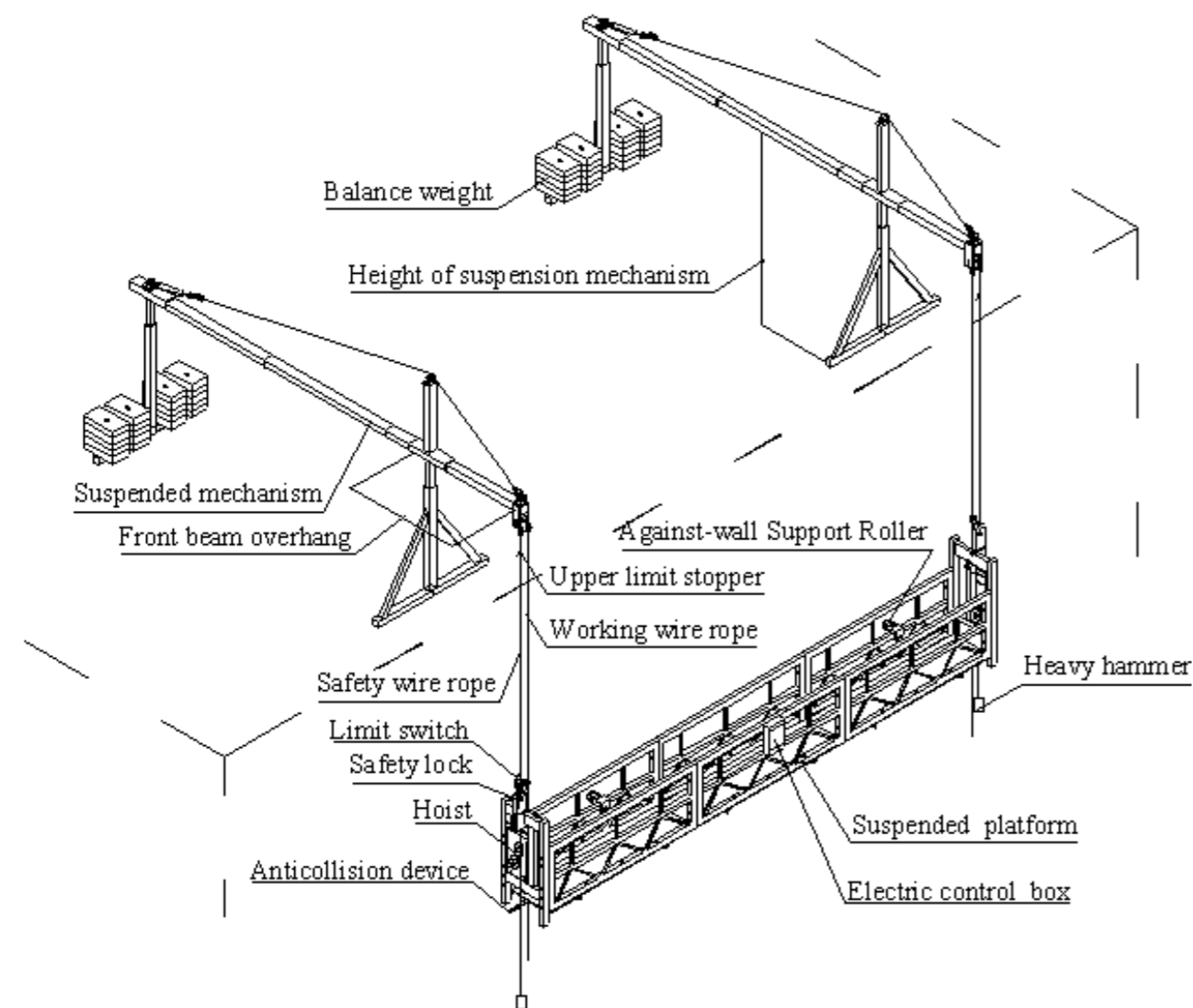
WE'VE REACHED NEW HEIGHTS WITH THE DUBAI KHALIFA TOWER

Shenxi Machinery Co., Ltd, established in 1988, is one of the domestic leaders in the suspended platform industry. We are dedicated to designing and manufacturing a wide range of suspended access equipment, such as suspended platform, service lift platform, BMU, mast platform, building hoist etc. Our products are widely used for facade clearing, curtain wall installation and maintenance, elevator installation, wind power plant, bridge, dam and shipping, chimneys of power plant and so on.

At Shenxi, we clearly realize that quality is the life of a company, In order to provide better suspended access equipments, we employ experienced technicians, import advanced equipment and implement strict quality control. We now have over 36 Shenxi offices and branches which serve over 80 countries and regions around the world.

ZLP Series Temporarily Installed Suspended Access Equipment

ZLP series temporarily installed suspended access equipment, which is developed and produced by Shenxi corporate, is ideal equipment for building facade construction, decoration, cleaning and maintenance. Because of superior quality and first class service, our ZLP series suspended platforms are widely applied in major international and national construction projects such as Dubai Khalifa Tower, Torre Costanera, Jakarta Mandarn Oriental Hotel, Guangzhou TV Tower, Beijing New CCTV Building, Hangzhou Bay Bridge, The Gate of the Orient and so on. And now our products are exported to various countries and regions all over the world.



Technical Parameters of Aluminum Alloy/Steel Suspended Platform/Cradle/Swing Stage

Type	ZLP500	ZLP630	ZLP800	ZLP1000	
Rated Capacity	500KG	630KG	800KG	1000KG	
Rated Lifting Speed	9~11m/min	9~11m/min	8~10m/min	8~10m/min	
Length of Platform	5m	6m	7.5m	7.5m	
Wire Rope Diameter	8.3mm 4*31SW+Fc	8.3mm 4*31SW+Fc	8.6mm	8.6mm 6*19+IWS	
Hoist	Type	LTD 5	LTD 6.3	LTD 8	
	Rated Lifting Force	4.9KN	6.17KN	7.84KN	
	Motor	Power	1.1KW	1.5KW	1.8KW/2.2KW
		Voltage	220/380/415/440V	220/380/415/440V	220/380/415/440V
		Frequency	50 Hz	50Hz	50 Hz
Rotation Speed		1420rpm	1420rpm	1420rpm	
Brake Torque	15Nm	15Nm	15Nm	30Nm	
Safety Lock	Type	LSB30	LSB30	LSB30	
	Permission Force of Impact	30kN	30kN	30kN	
	Locking Cable Distance	< 100mm	< 100mm	< 100mm	
	Locking Cable	3°~8°	3°~8°	3°~8°	
Suspended Mechanism	Projecting Length	1.3~1.7m	1.3~1.7m	1.3~1.7m	
	Adjustable Height of the Beam	1.27~1.83m	1.27~1.83m	1.27~1.83m	
Weight	Total Weight of Aluminum/Steel Platform(Not Include Wire Rope, Cable and Safety Rope)	1466/1525kg	1631/1715kg	1831/1955kg	
	Weight of Suspension Mechanism	310kg	310kg	310kg	
	Counter Weight	750kg	900kg	1000kg	

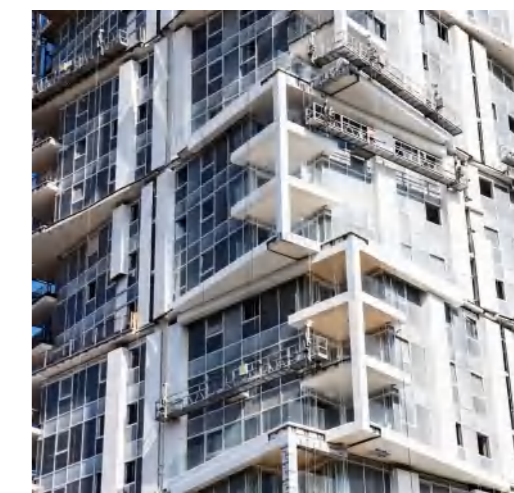
Note: We can design and make all kinds of special suspended platform to suit for any conditions and to meet special requirements proposed by the customers. Such as L leg single person platform, angled suspended platform, double deck platform, BMU gondola, single person suspended chair, circle suspended platform, movable end stirrup, ZLP350 suspended platform. You can find the photos in the following page.



Painting



Curtain wall maintenance



Glass Facade Working

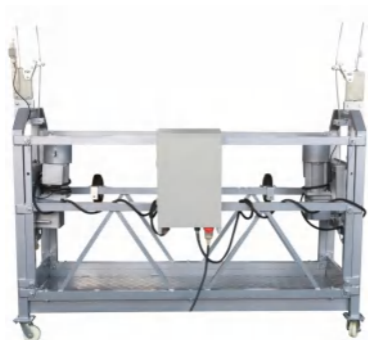


Custom Suspended Platform

We can design and make all kinds of special platform to suit for any conditions and to meet special requirements proposed by the customers.



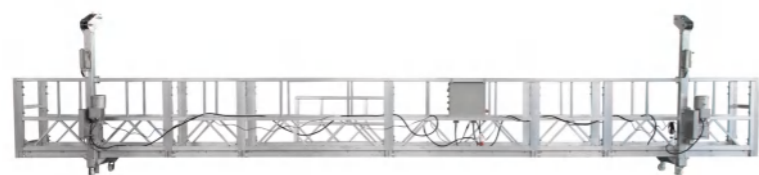
Pin-style platform



Moveable end stirrup platform



12m long platform



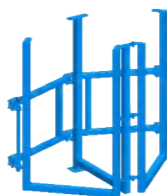
Double deck platform



Corner platform



Adjustable corner



Fixed corner



300KG Mini Crane



Material hoist



Manual hoist for manual platform



Electric hoist



Shaft Platform



For Elevator Intalling



Ship service Platform



BMU Platform



Suspended chair



For Single Person- Aluminum



For Single Person- Steel

Suspended Platform Components

1) LTD Series Hoist

Mainly adopting "a" cable-guiding system, Shenxi hoist is handy in design, light in weight and easy in maintenance. For 800kg and 1000kg load, "S" cable-guiding system can be as option. See the specification in the parameter table of suspended platform.

Note: LTD20 and LTD30 are with load capacity 2T and 3T.



LTD3

LTD5

LTD6.3/LTD8

LTD8/LTD10(S)

LTD10/LTD20/LTD30

2) Electrical Control System

Our electric control system is reliable with national and international famous brands electric components (CHNT & Schneider brand). Moreover, it is with safety device such as power leakage protector, overload relay and limit switch. Electronic overload device is as option. The box is of good water proof with IP54. We could also make in order.



3) Safety Lock

LSB Anti-tilting Type Safety Lock

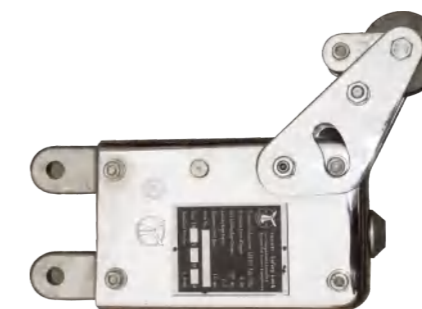
The safety lock will automatically lock the wire rope in the condition of the breaking of the suspension rope or the tilting of the platforms within $3^{\circ} \sim 8^{\circ}$.

SL Centrifugal type Safety Lock

The safety lock will automatically lock the wire rope within 100mm if suspended platform drops due to the breaking of the working wire rope or other reasons. The safety lock can be also manually operated to lock the wire rope when there is a failure on hoist or motor.



LSB30

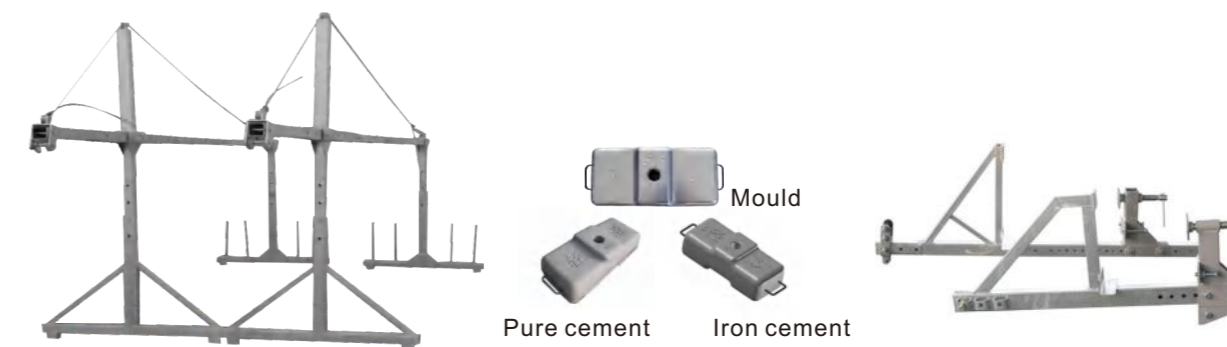


SL30

Technical Parameters of Safety Lock

Model	Pattern	Load Capacity Permitted	Fall Distance Permitted	Tilt Angle Permitted	Required Speed
LSB30	Swinging Arm Lock	$\leq 1000\text{kg}$	$< 100\text{mm}$	$3^{\circ} \sim 8^{\circ}$	
SL30	Centrifugal Lock	$\leq 1000\text{kg}$	$< 200\text{mm}$		$> 22\text{m/min}$

4) Suspension mechanism and Parapet clamber



Suspension Mechanism is installed on the top of the building and it is easy to install. The height and the overhang of the jib can be adjusted to adapt to different kinds of building facades and roof structures. The parapet clamber is suited for constructions with parapet wall of sufficient strength and adequate height. They can be designed and made according to specific conditions that customers may need.

Note: We can offer the mould as above photo for clients to make the counterweight in the local place.

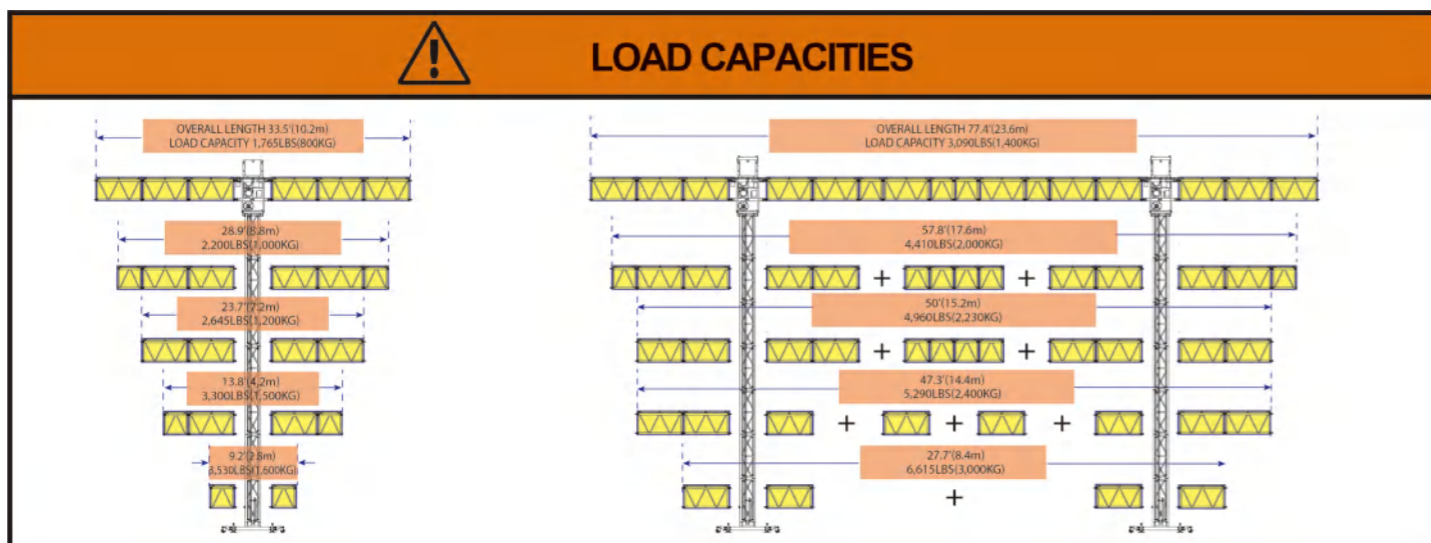
Mast Climbing Work Platform



Technical Parameters			
No	Specification	Single Mast	Double Mast
1	Model	STC100/STC150	
2	Max Capacity	1000/1500kg	1400/2000kg
3	Max Number Of People	4	6
4	Rated Lift Speed	8m/min	
5	Max Working Height	150m	
6	Max Platform Length	8.8m/10.2m	23.6m/30.2m
7	Standard Platform Width	1.5m	
8	Max Extension Width	2.5m	
9	The First Tie-in From The Ground	3—4m	
10	The Distance Above The Last Tie-in	4m	
11	Distance Between Tie-in	6m	
12	Mast Section Size	1508X500X500mm	

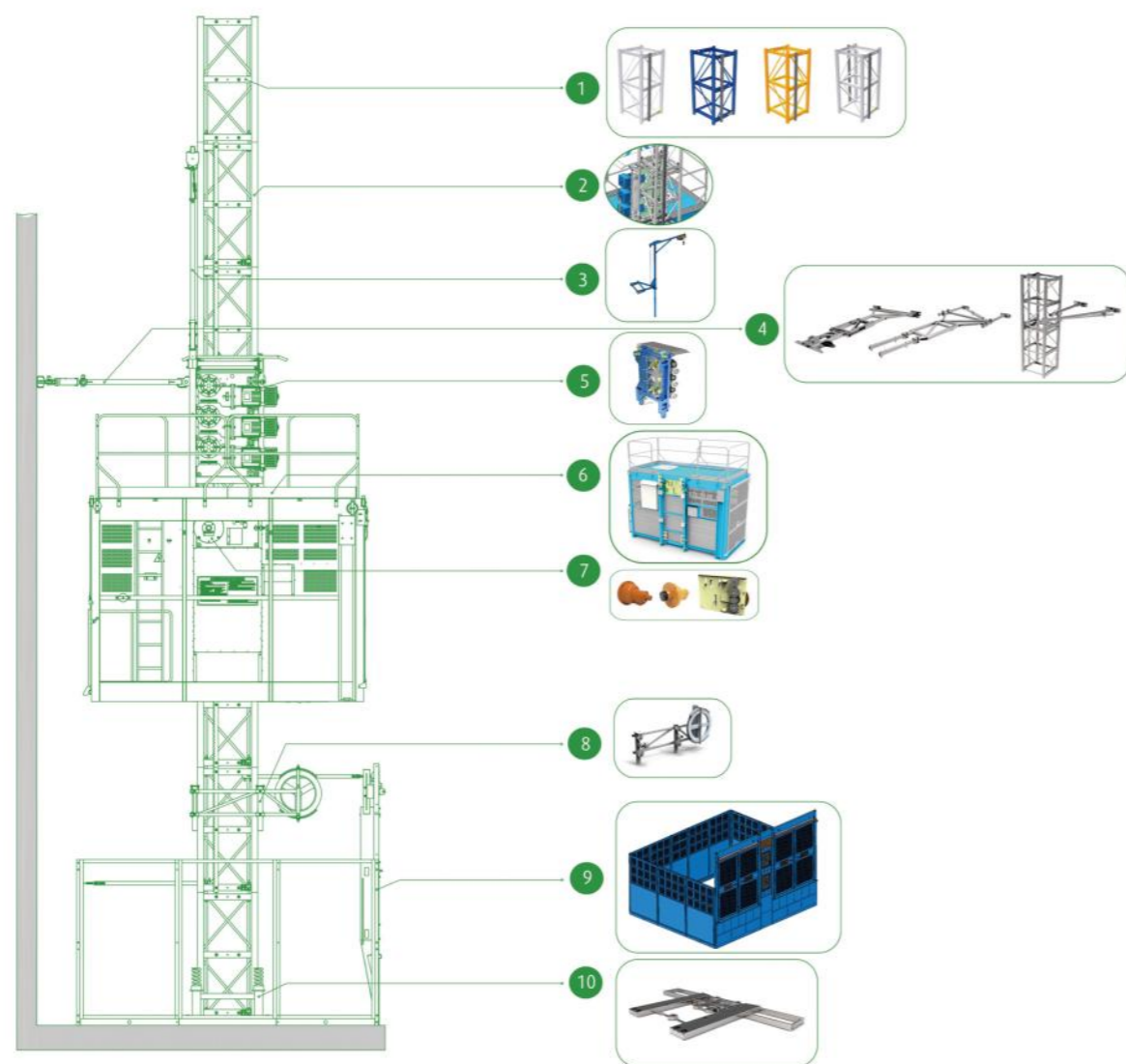


Greater Flexibility With Fewer Components



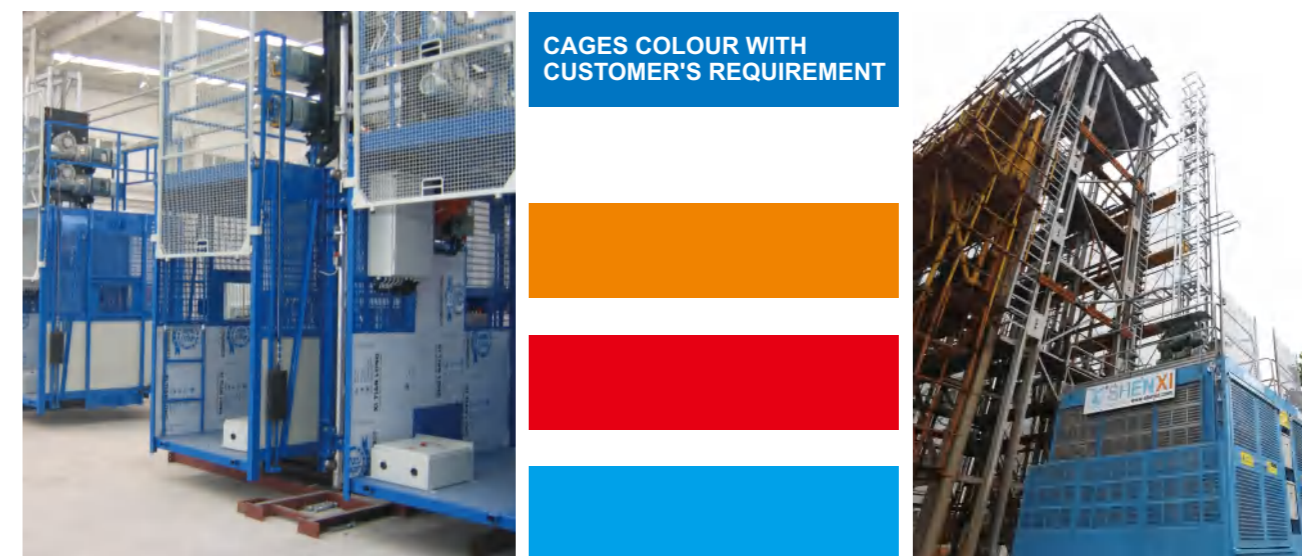
SC Series Construction Hoist

SC Series construction hoists are the one of domestically leading technology that well designed and manufactured by SHENXI, and your best choice for efficient construction logistics. Since the launch in 2011, close to 800 SC Series construction hoists have been delivered, the modular system offers flexibility, efficiency, safety, productivity, low energy consumption and low cost of ownership, making it the ultimate choice for both construction and rental companies.



SC Series Construction Hoists Sketch

- ① MAST
- ② DERAILMENT PREVENTION DEVICE
- ③ ELECTRIC LIFING DEVICE
- ④ MAST-TIE
- ⑤ DRIVING SYSTEM
- ⑥ CAGE
- ⑦ SAFETY DEVICE
- ⑧ CABLE TROLLY
- ⑨ ENCLOSURE
- ⑩ BASE FRAME



Designation Series	SC100	SC100/100	SC150	SC150/150	SC200	SC200/200	SC200E	SC200/200E	Note
Rate Load(kg)	1000/12person	2x1000/12person	1500/18person	2x1500/18person	2000/24person	2x2000/24person	2000/24person	2x2000/24person	
Erecting Payload(kg)	800	2x800	900	2x900	1000	2x1000	1000	2x1000	
Rated Speed(m/min)	30	30	36	36	36	36	36	36	
Reduction Ratio	1:16	1:16	1:16	1:16	1:16	1:16	1:16	1:16	
Max. lifting Heigh(m)	150	150	250	250	250	250	250	250	
Cage Size(lxwxh)(m)	30x13x25.	30x13x25.	32x14x25.	32x14x25.	32x15x25.	32x15x25.	32x15x25.	32x15x25.	
Power Supply(v)	380V,50Hz or 60Hz	380V,50Hz or 60Hz	380V,50Hz or 60Hz	380V,50Hz or 60Hz	380V,50Hz or 60Hz	380V,50Hz or 60Hz	380V,50Hz or 60Hz	380V,50Hz or 60Hz	
Motor Power(kw)	2x11	2x2x11	2x13	2x2x13	2x11	2x2x11	2x13	2x2x13	JC=25%
Rated Current(a)	2x24	2x2x24	2x27	2x2x27	3x24	3x2x24	2x27	2x2x27	
Power Capacity(kva)	34	2x34	42	2x42	49	2x49	42	2x42	

Mast Section	Wall Thickness Of Comer Bar(chord Membe)(mm)		Weight Of Mast Section(kg)		Dimension Of Mast Section(m)				
	T=45		142		065x065x1508				
	T=60		160						
	T=80		180						
T=100		195							
Cage Weight(incl. Driving System)(kg)	1750	2x1750	1820	2x1820	1950	2x1950	1950	2x1950	
Safety Device Type	SAJ30-1.2	SAJ30-1.2	SAJ40-1.2	SAJ40-1.2	SAJ40-1.2	SAJ40-1.2	SAJ40-1.2	SAJ40-1.2	

Remark:

- 1.Except for the recommended cage dimension, we could also manufacture cages of other size according to the customer.
- 2.The cage and the door material can be aluminum molded board, punched-plate, figured aluminum board or other type according to your requirements.
- 3.The mast and the tie-in surface can adopt paint-spray, or hot galvanizing treatment.

STP Transport Platform and Material Hoist



SHENXI's Modular System STP and SMH were designed to bring versatility and efficiency to the industry. With relatively few components, it can be configured to create various work platforms, transport platforms, or a combination of both.

The basic components of the modular system include a ground frame, a drive unit and a mast section. With these components, and add-ons such as adaptors, pendeldecks, deck sections and fences, virtually any type of work platform or transport platform can be created. This means greater flexibility and higher utilization for the fleet owner – resulting in significant economic benefits. By having the ability to utilize the same mast simultaneously on a transport platform and a construction hoist – or as a component of a mast climbing work platform – the fleet owner is able to capitalize on savings in terms of mast stock, storage space and installation costs.

● Basic components



● Adaptors



● Platforms



● Ramps



● Fences



- 3 different cage(platform) sizes on the same Basic Unit (mast, anchors, driver units, electrical equipment, ...)
- Dual function: Transport Platform (STP)/Material Hoist (SMH)
- Simple and Reliable design
- Multiple modules, strong commonality
- More Efficient, More Economical
- Easy Handling, Easy to Transport and Maintain



Technical Specification

Item/Model	STP75/SMH75		STP100/SMH100		STP150/SMH150		STP200/SMH200	
Capacity	750kg		1000kg		1500kg		2000kg	
Number of Persons	6	0	8	0	12	0	12	0
Lifting speed	12 m/min	24 m/min	12 m/min	24 m/min	12 m/min	24 m/min	12 m/min	24 m/min
Platform dim. (W*L)	1.5m*2.6m		1.5m*2.8m		1.5m*3.0m		1.5m*3.2m	
Number of Motor, Power	2*5.5kw		2*9.3kw		2*11kw		2*11kw 87Hz	
Type of mast	0.45m*0.45m*1.508m		0.45m*0.45m*1.508m		0.45m*0.45m*1.508m		0.45m*0.45m*1.508m	
Rack modulus	5		5		5		5	
Max lifting height	150 m*		150 m*		150 m*		150 m*	
Max Tie distance	6 m		6 m		6 m		6 m	
Max overhanging	4.5 m		4.5 m		4.5 m		4.5 m	
Power supply	380V 50Hz /220V 60Hz, 3P		380V 50Hz /220V 60Hz, 3P		380V 50Hz /220V 60Hz, 3P		380V 50Hz /220V 60Hz, 3P	

▶ Twin Mast Transport Platform



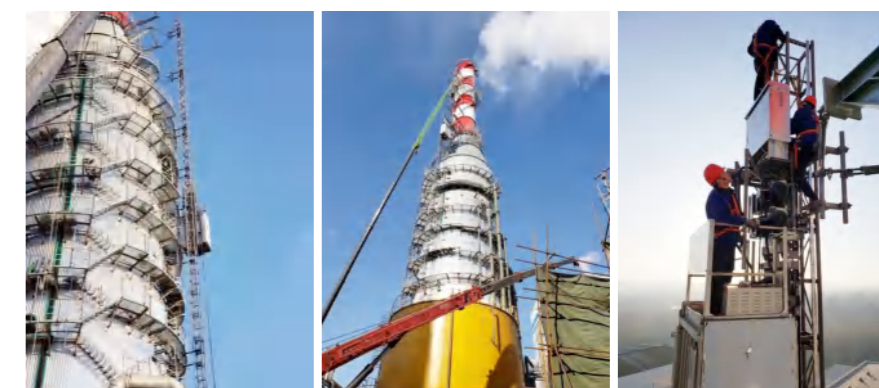
- ◆ Dual function: Transport Platform (TP)/ Material Hoist (MH)
- ◆ Twin mast
- ◆ Robust design for max endurance in construction and refurbishment jobsite
- ◆ Simple and reliable design
- ◆ Multiple standard section sizes are available for quick assembly
- ◆ Safety Device
- ◆ Overload protection device
- ◆ Erection Ramps



▶ Industry Hoist



- ◆ Designed according to ASMEA 17.1 and EN81
- ◆ Modular design with wide range of car size and capacity
- ◆ Two individual elevators can operate on one single mast
- ◆ No cab is required as for the drive unit on the car
- ◆ Fully integrated elevator control system
- ◆ Durable materials: extruded aluminum car wall panels with hot-galvanized tie-in & mast section
- ◆ Steel electric cabinets and landing control boxes. Optional stainless steel cars
- ◆ Diverse optional equipments & functions for custom needs.



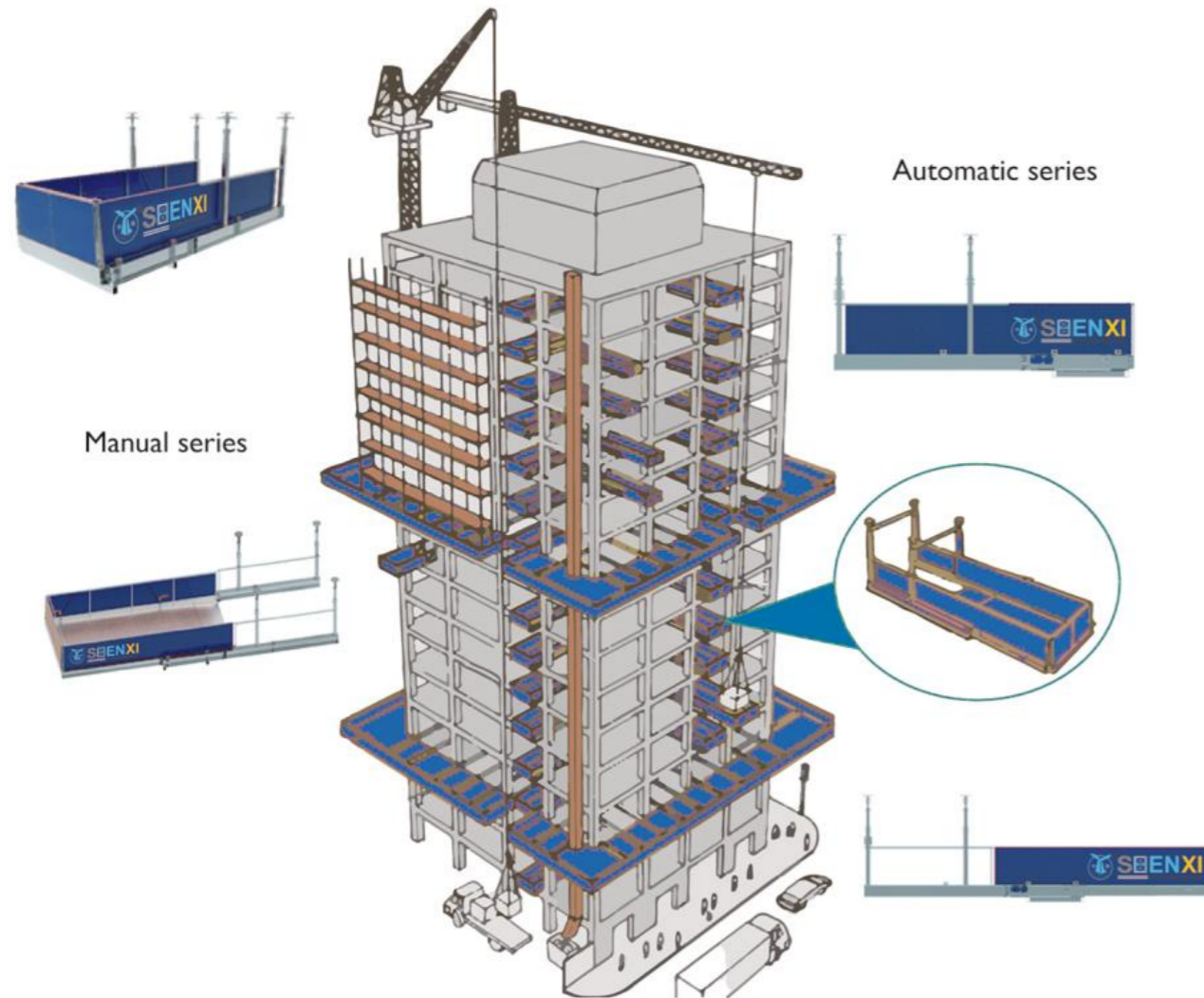
TECHNICAL SPECIFICATION

	Model	Rated load capacity(kg)	Lifting speed (m/min)	Motor power (kW)	Safety device	Mast section weight (kg)		
						86	88	810
Single cage	SE30	300	0~63	2 × 5	SAJ30-1.4	136	154	171
	SE50	500	0~63	2 × 7.5	SAJ30-1.4			
	SE80	800	0~63	2 × 9.5	SAJ40-1.4			
	SE100	1000	0~63	2 × 11	SAJ40-1.4			
	SE150	1500	0~63	2 × 13	SAJ40-1.4	162	180	196
	SE200	2000	0~63	2 × 18.5	SAJ40-1.4			
	SE270	2700	0~63	2 × 22	SAJ60-1.4			
	SE320	3200	0~63	2 × 26	SAJ70-1.4			

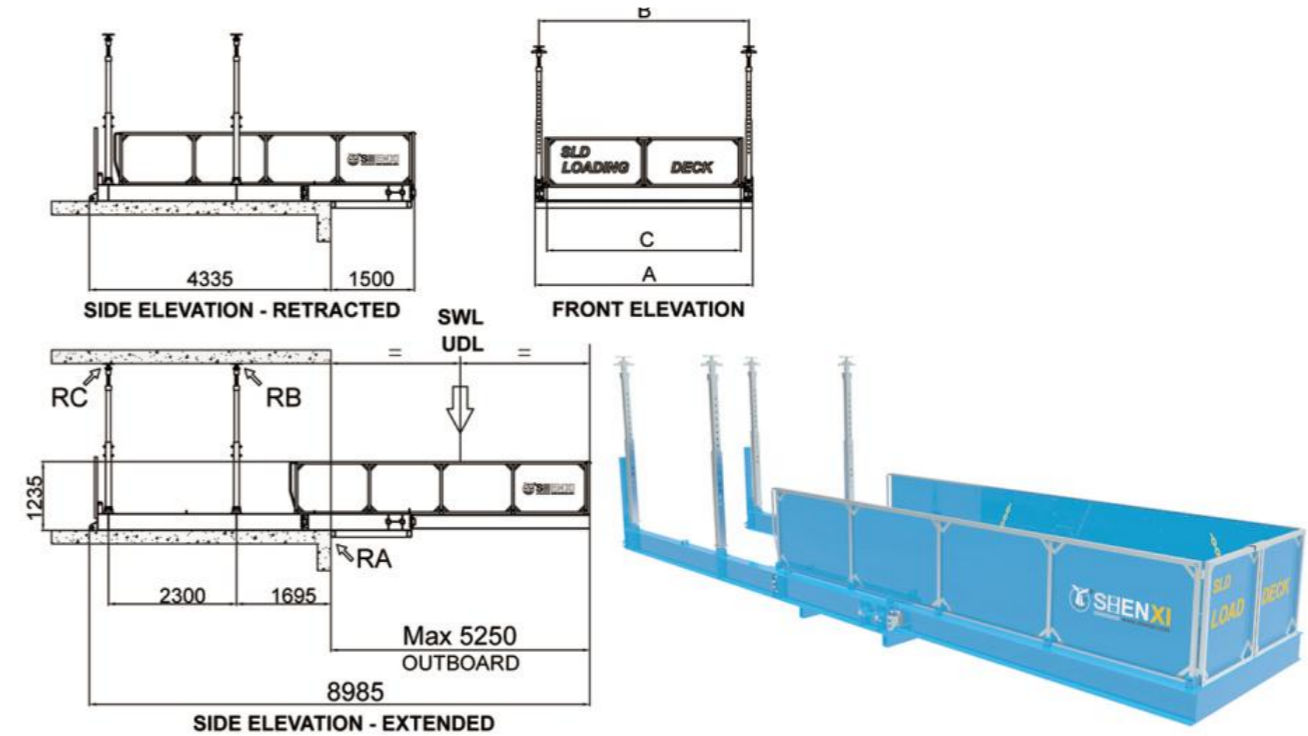
These products are customized product and can be customized according to the customer's specific size requirements. Explosion-proof industrial elevators can also be provided.

▶ Loading Platform

Why Choose our LOADING DECK ?



- ✓ Max outboard length: 5.25m
- ✓ Easy Push/Pull system
- ✓ Simple Locking system
- ✓ Installing at adjustable props
- ✓ Conveniently located anchor points for safe use
- ✓ Customized to all projects requirements



Model	Symbol	Unit	SLD 2200-L	SLD 2200-H	SLD 3200	SLD 4200
External width	W1	mm	2200	2200	3200	4200
Internal width	W2	mm	1740	1740	2740	3740
Distance between front and rear prop	W3	mm	2300	2300	2300	2300
Distance between left and right prop	W4	mm	2050	2050	3050	4050
Folded height/Stacking height	H	mm	510/420	510/420	510/420	510/420
Height of the side panel	H1	mm	1100	1100	1100	1100
Min. prop height	H2 _{min}	mm	2400	2400	2400	2400
Max. prop height	H2 _{max}	mm	3300	3300	3300	3300
Retracted length	L1	mm	4845	5320	5320	5320
Extend length	L2	mm	7430	8985	8985	8985
Overhang length of stationary frame	L3	mm	1200	1450	1450	1450
Distance between the front prop and the slab edge	L4	mm	1065	1695	1695	1695
Extended length of movable deck	L5	mm	2665	3800	3800	3800
Weight	TM	t	2.1	2.65	3.25	3.95
Safe Working load (UDL)	SWL	t	2.5	5	5	5



