



**GSD**  
GOLDEN STAR



Ma An Shan Golden Star Machinery Co.,Ltd

Mobile:0086-13349057050

ADD:NO:32 Dalong Dangtu Ma an Shan Anhui China

Email:nancy\_machinery@yeah.net



GSD, is equipped with processing facilities including heat treatment, grinding facility, assembly facility and test machine and this leads to maintenance of uniformly high quality products.

Furthermore GSD guarantees that manufacturing high quality hydraulic breakers through modernized and automated system for the future investment.

| No | MACHINE                      | Q'TY |
|----|------------------------------|------|
| 1  | CNC Machin                   | 3    |
| 2  | Machine Center               | 4    |
| 3  | Gun-Drill Machine            | 2    |
| 4  | Surface processor            | 2    |
| 5  | Deep Hole Processor          | 1    |
| 6  | Milling Machine              | 4    |
| 7  | Radial Machine               | 1    |
| 8  | Lathe                        | 3    |
| 9  | Grinding Machine             | 6    |
| 10 | Tester Machine               | 2    |
| 11 | Hydraulic Torque Wrench Unit | 2    |
| 12 | Air Compressor               | 2    |
| 13 | Paint Booth                  | 2    |
| 14 | Hoist Crane                  | 15   |
| 15 | Folk Lift                    | 2    |
| 16 | Heattreatment System         | 5    |
| 17 | Burrel Grinder               | 2    |



## CEO's Message Welcome to GSD

As the Hydraulic Hammer's premier supplier of 2 types(Inward, Outward), our company enjoys an exceptional reputation

That comes from the dedication and hard work of all our employees with 'INNOVATIVE, UNITED, ASSISTANT' mind and our incomparable products make to expand sales markets from domestic to worldwide.

We look forward to establishing a long and fruitful relationship with you for the best Hydraulic Hammer in 21st century and thank you for your attention.  
Sincerely.





| SPECIFICATIONS            | Unit               | GSD10T       | GSD20T       | GSD30T       | GSD40T       | GSD43T       | GSD50T       | GSD60T       | GSD70T       | GSD81T       | GSD121T      | GSD131T      | GSD151T      |
|---------------------------|--------------------|--------------|--------------|--------------|--------------|--------------|--------------|--------------|--------------|--------------|--------------|--------------|--------------|
| Body weight(incl. chisel) | kg                 | 53           | 71           | 89           | 156          | 214          | 479          | 652          | 850          | 920          | 1313         | 1442         | 1933         |
| Total weight              | kg                 | 72           | 95           | 158          | 343          | 409          | 866          | 1250         | 1852         | 2052         | 2745         | 3156         | 3892         |
| Size(L*W*H)               | mm                 | 1086*156*189 | 1235*176*200 | 1344*235*370 | 1684*350*486 | 1706*390*486 | 2387*450*570 | 2604*560*710 | 2900*560*710 | 2866*560*710 | 3102*600*760 | 3286*760*840 | 3612*760*920 |
| Hydraulic oil flow        | l/min              | 15-25        | 20-30        | 25-50        | 40-70        | 50-90        | 80-110       | 90-120       | 130-150      | 120-180      | 180-240      | 200-260      | 210-290      |
| Hydraulic pressure        | kg/cm <sup>2</sup> | 90-120       | 90-120       | 90-120       | 110-140      | 120-150      | 150-170      | 150-170      | 160-180      | 160-180      | 160-180      | 160-180      | 160-180      |
| Blow frequency            | bmp                | 800-1400     | 700-1200     | 600-1100     | 500-900      | 400-800      | 350-700      | 350-700      | 400-800      | 350-500      | 300-450      | 250-400      | 200-350      |
| Chisel diameter           | mm                 | 40           | 45           | 53           | 68           | 75           | 100          | 125          | 135          | 140          | 155          | 165          | 175          |
| Carrier weight            | ton                | 0.8-2.5      | 1.2-3.0      | 2.5-4.5      | 4-7          | 6-9          | 10-15        | 15-18        | 18-26        | 18-26        | 28-35        | 30-45        | 40-55        |



| SPECIFICATIONS             | Unit               | GSD10S      | GSD20S       | GSD30S       | GSD40S       | GSD43S       | GSD50S       | GSD60S       | GSD70S        | GSD81S        | GSD121S       | GSD131S       | GSD151S       |
|----------------------------|--------------------|-------------|--------------|--------------|--------------|--------------|--------------|--------------|---------------|---------------|---------------|---------------|---------------|
| Body weight (incl. chisel) | kg                 | 53          | 71           | 89           | 156          | 214          | 479          | 652          | 850           | 920           | 1313          | 1442          | 1933          |
| Total weight               | kg                 | 70          | 95           | 158          | 343          | 409          | 866          | 1250         | 1852          | 2052          | 2745          | 3156          | 3910          |
| Size(L*W*H)                | mm                 | 918*176*360 | 1090*215*435 | 1178*230*500 | 1373*295*772 | 1515*295*735 | 1900*390*910 | 2007*390*910 | 2423*500*1202 | 2480*590*1335 | 2776*590*1382 | 2820*590*1378 | 3184*670*1670 |
| Hydraulic oil flow         | l/min              | 15-25       | 20-30        | 25-50        | 40-70        | 50-90        | 80-110       | 90-120       | 130-150       | 120-180       | 180-240       | 200-260       | 210-290       |
| Hydraulic pressure         | kg/cm <sup>2</sup> | 90-120      | 90-120       | 90-120       | 110-140      | 120-150      | 150-170      | 150-170      | 160-180       | 160-180       | 160-180       | 160-180       | 160-180       |
| Blow frequency             | bmp                | 800-1400    | 700-1200     | 600-1100     | 500-900      | 400-800      | 350-700      | 350-700      | 400-800       | 350-500       | 300-450       | 250-400       | 200-350       |
| Chisel diameter            | mm                 | 40          | 45           | 53           | 68           | 75           | 100          | 125          | 135           | 140           | 155           | 165           | 175           |
| Carrier weight             | ton                | 0.8-2.5     | 1.2-3.0      | 2.5-4.5      | 4-7          | 6-9          | 10-15        | 15-18        | 18-26         | 18-26         | 28-35         | 30-45         | 40-55         |



| SPECIFICATIONS            | Unit               | GSD10B       | GSD20B       | GSD30B       | GSD40B       | GSD43B       | GSD50B       | GSD60B       | GSD70B       | GSD81B       | GSD121B      | GSD131B      | GSD151B      |
|---------------------------|--------------------|--------------|--------------|--------------|--------------|--------------|--------------|--------------|--------------|--------------|--------------|--------------|--------------|
| Body weight(incl. chisel) | kg                 | 53           | 71           | 89           | 156          | 214          | 479          | 652          | 850          | 920          | 1313         | 1442         | 1933         |
| Total weight              | kg                 | 102          | 129          | 155          | 361          | 450          | 1007         | 1296         | 1898         | 2004         | 2968         | 2916         | 3902         |
| Size(L*W*H)               | mm                 | 1190*260*295 | 1331*260*295 | 1417*350*305 | 1660*328*486 | 1712*328*486 | 2345*440*570 | 2599*560*710 | 2847*560*710 | 2793*560*710 | 3075*640*760 | 3337*654*840 | 3723*670*920 |
| Hydraulic oil flow        | l/min              | 15-25        | 20-30        | 25-50        | 40-70        | 50-90        | 80-110       | 90-120       | 130-150      | 120-180      | 180-240      | 200-260      | 210-290      |
| Hydraulic pressure        | kg/cm <sup>2</sup> | 90-120       | 90-120       | 90-120       | 110-140      | 120-150      | 150-170      | 150-170      | 160-180      | 160-180      | 160-180      | 160-180      | 160-180      |
| Blow frequency            | bmp                | 800-1400     | 700-1200     | 600-1100     | 500-900      | 400-800      | 350-700      | 350-700      | 400-800      | 350-500      | 300-450      | 250-400      | 200-350      |
| Chisel diameter           | mm                 | 40           | 45           | 53           | 68           | 75           | 100          | 125          | 135          | 140          | 155          | 165          | 175          |
| Carrier weight            | ton                | 0.8-2.5      | 1.2-3.0      | 2.5-4.5      | 4-7          | 6-9          | 10-15        | 15-18        | 18-26        | 18-26        | 28-35        | 30-45        | 40-55        |



| MODEL                     |               | GSD5G   | GSD8G   | GSD10G  | GSD15G  | GSD20G  | GSD30G  | GSD40G  |
|---------------------------|---------------|---------|---------|---------|---------|---------|---------|---------|
| For Excavator Weight(Ton) |               | 7-9     | 10-11   | 11-12   | 13-18   | 18-25   | 25-30   | 30-40   |
| Operating Weight (Kg)     | Side Type     | 330     | 409     | 866     | 1200    | 1550    | 2380    | 2900    |
|                           | Top Type      | 365     | 409     | 866     | 1230    | 1600    | 2420    | 3020    |
|                           | Silenced Type | 398     | 450     | 1007    | 1310    | 1700    | 2540    | 3110    |
| Working Flow(L/Min)       |               | 50-90   | 50-90   | 80-110  | 90-120  | 125-150 | 150-190 | 190-250 |
| Working Pressure(Bar)     |               | 100-140 | 120-150 | 150-170 | 160-180 | 160-180 | 160-180 | 160-180 |
| Impact Rate(Bpm)          |               | 500-900 | 400-800 | 350-700 | 360-650 | 400-800 | 300-750 | 250-500 |
| Hose Diameter(Inch)       |               | 1/2     | 1       | 1       | 1       | 1       | 1       | 5/4     |
| Tool Diameter(mm)         |               | 75      | 90      | 105     | 120     | 135     | 150     | 160     |



| SPECIFICATIONS             | Unit               | GSD10S      | GSD20S       | GSD30S       | GSD40S       | GSD43S       | GSD50S       | GSD60S       | GSD70S        | GSD81S        | GSD121S       | GSD131S       | GSD151S       |
|----------------------------|--------------------|-------------|--------------|--------------|--------------|--------------|--------------|--------------|---------------|---------------|---------------|---------------|---------------|
| Body weight (incl. chisel) | kg                 | 53          | 71           | 89           | 156          | 214          | 479          | 652          | 850           | 920           | 1313          | 1442          | 1933          |
| Total weight               | kg                 | 70          | 95           | 158          | 343          | 409          | 866          | 1250         | 1852          | 2052          | 2745          | 3156          | 3910          |
| Size(L*W*H)                | mm                 | 918*176*360 | 1090*215*435 | 1178*230*500 | 1373*295*772 | 1515*295*735 | 1900*390*910 | 2007*390*910 | 2423*500*1202 | 2480*590*1335 | 2776*590*1382 | 2820*590*1378 | 3184*670*1670 |
| Hydraulic oil flow         | l/min              | 15-25       | 20-30        | 25-50        | 40-70        | 50-90        | 80-110       | 90-120       | 130-150       | 120-180       | 180-240       | 200-260       | 210-290       |
| Hydraulic pressure         | kg/cm <sup>2</sup> | 90-120      | 90-120       | 90-120       | 110-140      | 120-150      | 150-170      | 150-170      | 160-180       | 160-180       | 160-180       | 160-180       | 160-180       |
| Blow frequency             | bmp                | 800-1400    | 700-1200     | 600-1100     | 500-900      | 400-800      | 350-700      | 350-700      | 400-800       | 350-500       | 300-450       | 250-400       | 200-350       |
| Chisel diameter            | mm                 | 40          | 45           | 53           | 68           | 75           | 100          | 125          | 135           | 140           | 155           | 165           | 175           |
| Carrier weight             | ton                | 0.8-2.5     | 1.2-3.0      | 2.5-4.5      | 4-7          | 6-9          | 10-15        | 15-18        | 18-26         | 18-26         | 28-35         | 30-45         | 40-55         |

| EXCAVATOR | GSD10             | GSD20                                 | GSD30                      | GSD40                    | GSD43                      | GSD50                         | GSD70                                     | GSD81                                     | GSD121                                    | GSD131                         | GSD151            |
|-----------|-------------------|---------------------------------------|----------------------------|--------------------------|----------------------------|-------------------------------|---|---|---|--------------------------------|-------------------|
| CAT       | 301.C<br>301.8C   | 302.5C                                | 303C CR<br>303.5C CR       | 205<br>206               | /                          | 212 213 214 312<br>E110 120B  | E200B E240<br>320C 322                    | 219 320<br>322 325                        | 220 225 239<br>300 330                    | 235C 329 330L<br>335 E450 235C | E450<br>235C      |
| KOMATSU   | PC05              | PC05<br>PC07                          | PC10 12 15<br>PC20 27      | PC40 PC45<br>PC50 PC60   | PC45 50 60                 | PC120 150<br>PW150            | PC200 210 220 250<br>PW210                | PC200 210 220 250<br>PW210                | PC250<br>PC300                            | PC400                          | PC400<br>PC450    |
| DOOSAN    | SOSAR007/010      | SOLAR007/010                          | DH30 DSL602<br>SOLAR30/035 | DH55<br>DH60             | S70W                       | DH130 130W<br>DH150 DH170     | DH210 220<br>DH225 258                    | DH210 220<br>DH225 258                    | DH300                                     | DH360 370<br>DH420 500         | DH420<br>DH500    |
| HYNDAI    | ROBEX15           | ROBEX28                               | ROBEX35                    | RB55-7<br>RB60-7         | /                          | RB130-7<br>RB175              | RB200 210 215<br>RB225 245 260            | RB200 210 215<br>RB225 245 260            | R290 335<br>R360 420                      | R375 420<br>R450 455           | R420 450<br>R505  |
| HITACHI   | EX8 12 15<br>UE10 | EX8 12 17 18<br>UE10 12 15 20<br>EC22 | EX25 27 30<br>EX33 34 UE30 | ZX55<br>ZX60 ZX60W       | ZX60 ZX60W<br>ZX70         | ZX100 120 130<br>ZX150 160    | ZX200 210 220<br>ZX230 240 250            | ZX210 220<br>ZX230 240 270                | ZX300 330<br>ZX350                        | ZX350 360<br>ZX400             | ZX400<br>ZX450    |
| KOBELCO   | /                 | /                                     | SK035                      | SK55<br>SK60             | SK60                       | SK100 115<br>SK120            | SK200 210 220<br>SK230 250                | SK220 230<br>SK250 270                    | SK300 320<br>SK330 350                    | SK400 430<br>SK450             | SK430<br>SK450    |
| VOLVO     | EC14<br>EC15B     | EC20B                                 | EC25 30 35<br>ZL302        | EC55                     | /                          | EC120<br>EC140                | EC180<br>EC210                            | EC210<br>EC240                            | EC290                                     | EC360<br>EC460                 | EC460             |
| KATO      | /                 | 1                                     | /                          | HD180 250<br>HD400       | HD250 399<br>HD400         | HD450 500<br>HD550            | HD700 800<br>HD820 880                    | HD800 820-5<br>HD880 HD1023               | HD1023R 1250<br>HD1430R                   | HD1500 1800<br>HD1638R         | HD1638R<br>HD2500 |
| KUBOTA    | /                 | 15                                    | 35                         | 50 55                    | 60                         | 161 185                       | /   | /   | /   | /                              | /                 |
| SANY      | /                 | /                                     | 1                          | SY55 60<br>SY65          | SY65C-9<br>SY75C-9         | SY130 135C-B<br>SY155H        | SY185 195 205<br>SY215 225 235            | SY185 195 205<br>SY215 225 235            | SY285 305<br>SY335 365                    | SY335 358 365<br>SY385 420     | SY465H-8          |
| YUCHAI    | /                 | /                                     | /                          | YC35 55 65               | YC65                       | YC135                         | /   | /   | /   | /                              | /                 |
| LIUGONG   | /                 | /                                     | /                          | CLG904 905<br>CLG906 907 | CLG766<br>CLG907<br>CLG908 | CLG915                        | CLG200 205<br>CLG220 225<br>CLG920 922    | CLG210 230 CLG920<br>923<br>CLG925        | 920D 922D<br>225CC 230 723C<br>925D 925LL | 936D                           | 936D              |
| STRONG    | /                 | /                                     | /                          | JCM906D<br>GC60          | JCM907D 908D<br>JC78 GC88  | JCM913D 916D<br>GC138 MC136-9 | JCM921 922 924<br>GC208 228 258           | JCM921 922 924<br>GC208 228 258           | JCM933D<br>GC338LC-B                      | GC258 338<br>GC37BLC-8         | GC378LC-B         |
| LIUGONG   | /                 | /                                     | /                          | LG660<br>LG665           | LG685<br>LG690             | LG6150E                       | LG6210E 6225E<br>LG6250E                  | LG6210E 6225E<br>LG6250E                  | LG6300E                                   | LG6360E                        | LG6360E           |
| FOTON     | /                 | /                                     | /                          | 45                       | 60 65                      | 170                           | 220                                       | 230 240 260                               | FR220E                                    | FR260                          | FR330             |
| XGMA      | /                 | /                                     | /                          | 60-8                     | 60-8                       | 140-8                         | 210LC-8<br>230LC-7B                       | 230LC-7B<br>240LC-8                       | XG825LC                                   | XG833                          | XG636LC           |
| SUNWARD   | SWE08             | SWE17 18                              | SWE30 40                   | SWE40 50 60<br>SWE70 80  | SWE60 70 80                | SWE90 125<br>SWE130 150       | SWE230                                    | SWE230                                    | SWE330                                    | SWE330                         | SWE470            |
| ZOOMLION  | ZE15E             | ZE15E                                 | /                          | ZE60E-1                  | ZE85E                      | ZE150E                        | ZE205E ZE210E<br>ZE230E ZE260E            | ZE205E ZE210E<br>ZE230E ZE260E            | ZE330E                                    | ZE360E                         | ZE480             |
| XCMG      | /                 | /                                     | 40                         | 40 60                    | 60 70 80                   | 150                           | 210 220                                   | 220 240 250                               | 330                                       | 370                            | 370 390           |
| JONYANG   | /                 | /                                     | /                          | JY606                    | JY608<br>JYL80             | JY613                         | JY210E JY230<br>JY621E JY623E             | JY210E JY230<br>JY621E JY623E             | JY630                                     | /                              | JY44              |
| SUMITOMO  | SH25              | SH25                                  | SH25                       | SH40 60<br>SH65 70       | SH60 65 70<br>SH75 80      | SH100 120 130<br>SH135 145    | SH200 210 240<br>S260 S280                | SH200 SH240<br>S260                       | S330 340<br>S390                          | SH330 340<br>SH400 450         | SH400 430 450     |
| HYUNDAI   | /                 | /                                     | /                          | RB55                     | /                          | RB130                         | R200 R210<br>R215 R225<br>R245 R260       | R200 R210<br>R215 R225<br>R245 R260       | R335<br>R360                              | R375<br>R420<br>R455           | R505              |
| HITACHI   | /                 | /                                     | ZX30                       | ZX55<br>ZX60             | ZX70                       | ZX120<br>ZX130<br>ZX150       | ZX200 ZX210<br>ZX220 ZX230<br>ZX240 ZX250 | ZX200 ZX210<br>ZX220 ZX230<br>ZX240 ZX250 | ZX300<br>ZX330                            | ZX350<br>ZX360<br>ZX400        | ZX450             |
| ATLAS     | /                 | /                                     | /                          | /                        | /                          | /                             | 2006 2306                                 | 2006 2306                                 | 3306                                      | /                              | /                 |
| LIEBHERR  | /                 | /                                     | /                          | /                        | /                          | /                             | /   | /   | R934B                                     | R944C                          | R954C             |
| CASE      | /                 | /                                     | /                          | CX45                     | CX75                       | CX130                         | CX210 CX240                               | CX210 CX240                               | /   | CX360                          | CX460             |
| XIAGONG   | /                 | /                                     | /                          | XG804                    | XG765                      | /                             | XG820 XG822                               | XG820 XG822                               | /   | /                              | /                 |
| XUGONG    | /                 | /                                     | /                          | XCG60                    | XCG88<br>EC80              | XCG140                        | XCG220<br>XCG210<br>XCG230                | XCG220<br>XCG210<br>XCG230                | XCG330                                    | XCG330                         | XCG420            |





Front Cover



Front Cover



Inner Bush



Inner Bush



Front Head



Rod Pin



Rod Pin



Rod Pin



Stop Pin



Spring Pin



Grease Nipple



Grease Nipple



Snap Ring



Air Check Valve



Rubber Plug



Cylinder Assy



Cylinder Assy



Accumulator



Valve Assy



Control Valve



Control Valve



Piston



Seal Retainer



Diaphragm



Diaphragm



Seal Kit



Valve Adjuster



Stop Pin



Spring Pin



Grease Nipple



Grease Nipple



Snap Ring



Air Check Valve



Rubber Plug



Valve Adjuster



Socket Bolt



Socket Bolt



Heli Coil



Oil Hose Plug



Charging V/V



Adapter



Air Check Valve



Side Type



Top Type



Skid Loader Type



Backhoe Type



Nut



Nut



Nut



Through Bolt



Back Head



Mounting Pin



Mounting Pin Bush



Flange Adapter



Through Bolt



Side Bolt



Side Bolt



Side Bolt



Adapter



Charging Valve (SOOSAN)



Charging Valve (DAEMO)



Charging Valve (EVERDIGM)



Bolt For Mounting Cap



Hose



Pipe Clamp



Pipe Clamp



Charging Valve (FRD)



Charging Valve (KRUPP)



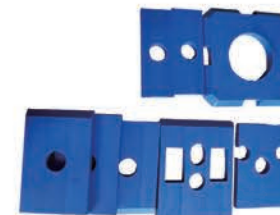
Charging Valve (MSB)



Charging Valve (NPK)



Charging Valve (TEISAKU)



Coushion



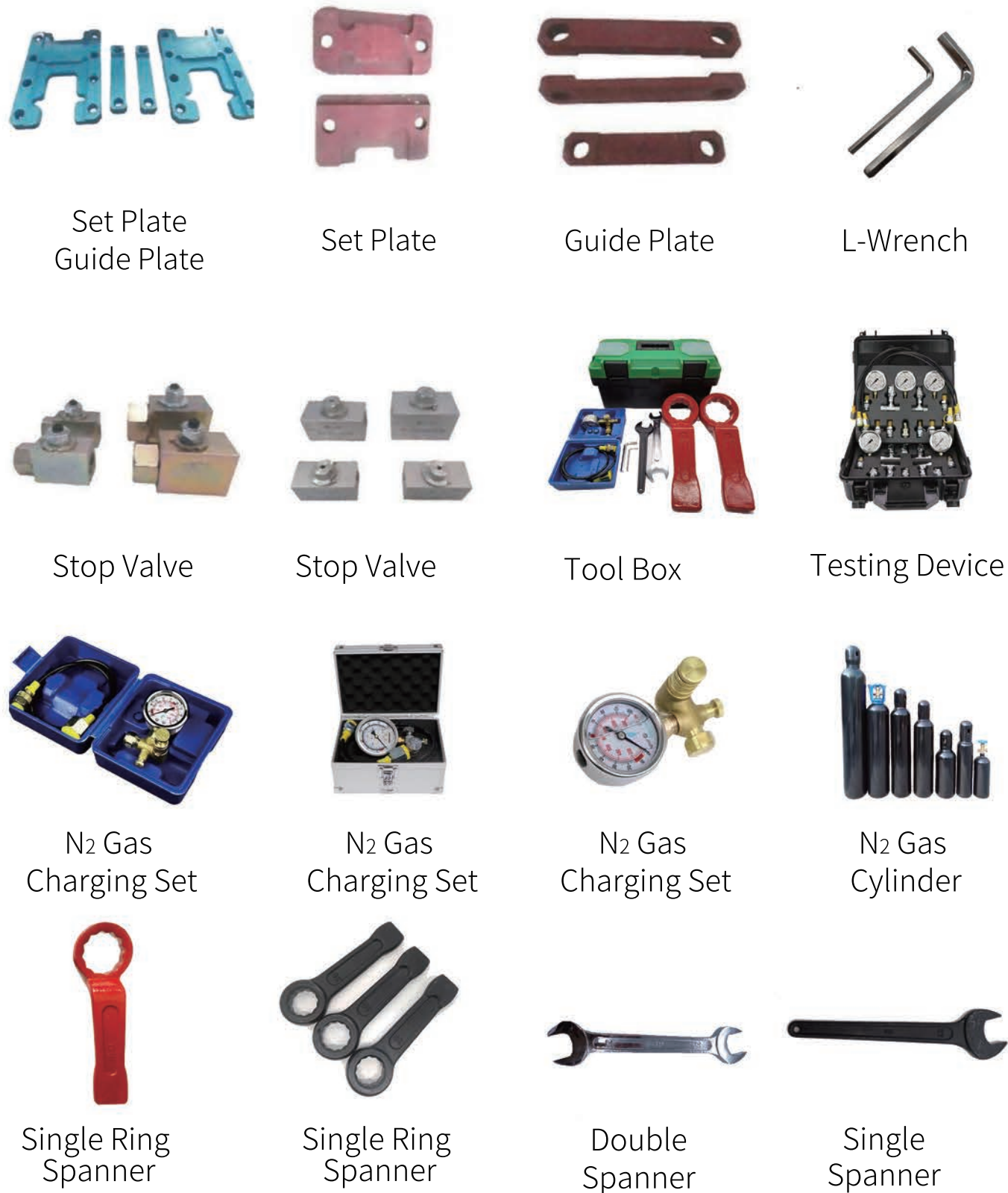
Coushion



Coushion



Coushion

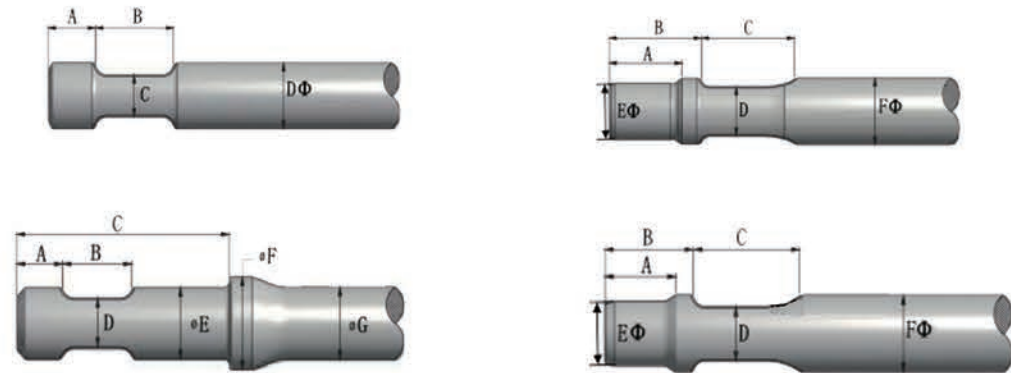
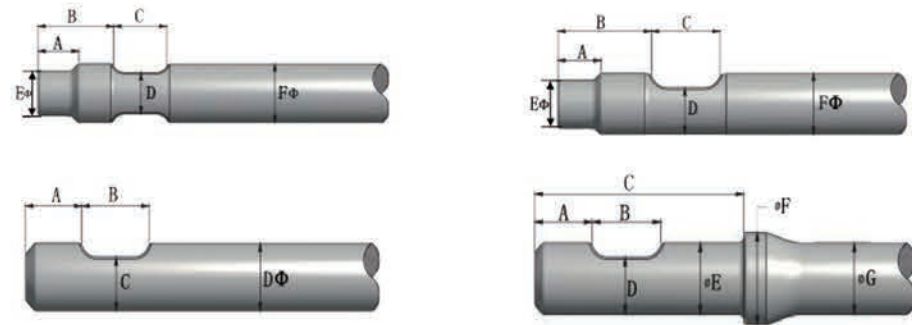


| 序号<br>No | 模式工具名称<br>Name of Working Tool | 工具结构<br>Tool Configurations | 推荐应用<br>Recommended Applications   |
|----------|--------------------------------|-----------------------------|--|
| 1        | 四棱锥型<br>Moll                   |                             | 通常的岩石、道路破碎<br>Universal usage Concrete breaking<br>Rock breaking Road construction |
| 2        | 加长四棱锥型<br>Moll(Long)           |                             | 通常的岩石、道路破碎<br>Universal usage Concrete breaking<br>Rock breaking Road construction |
| 3        | 圆锥型<br>Cone                    |                             | 轻型破坏工作<br>Universal usage<br>Soft & nonabrasive work                               |
| 4        | 一字型<br>Chisel                  |                             | 开采、挖沟、地下、坡面作业<br>Mining Trenching<br>Ground work Slope breaking                    |
| 5        | 带槽一字型<br>Dust Chisel           |                             | 开采、挖沟、地下、坡面作业<br>Mining Trenching<br>Ground work Slope breaking                    |
| 6        | 沥青型<br>Asphalt Cutter          |                             | 冻土, 沥青剥离<br>Frozen ground Asphalt cutting  |
| 7        | 平头型<br>Blunt                   |                             | 岩石的二次破碎, 粉碎<br>Mining Block holing<br>Secondary breaking Slag removal              |
| 8        | 打桩型<br>Slab Buster             |                             | 粉碎, 打桩<br>Slab demolishing<br>Lower tool wear application                          |
| 9        | 开槽型<br>Tank Cutter             |                             | 容器开槽, 特殊应用<br>Container chopping Special<br>application for two tips' breaking     |



# MARK:

- 1.RAW MATERIAL 40CR 42CRMO 42CRMOA
- 2.THE FOLLOWING LIST IS STANDARD LENGTH, LENGTH WE CAN DO AS YOUR REQUIREMENT
- 3.SPECIAL CHISEL PLS FLOWING THE DRAWING LIST,MEASURE SIZE A B C D E F G



| BRAND  | MODEL     | DIAMETER (mm) | LENGTH (STANDARD mm) | WEIGHT (kgs) |
|--------|-----------|---------------|----------------------|--------------|
| SOOSAN | SB10      | 40            | 450                  | 4            |
|        | SB20      | 45            | 500                  | 6            |
|        | SB30      | 53            | 570                  | 9            |
|        | SB35      | 60            | 600                  | 13           |
|        | SB40      | 68            | 710                  | 19           |
|        | SB43      | 75            | 800                  | 27           |
|        | SB45      | 85            | 850                  | 36           |
|        | SB50      | 100           | 1000                 | 59           |
|        | SB60      | 125           | 1050                 | 97           |
|        | SB70/71   | 135           | 1100                 | 118          |
|        | SB81      | 140           | 1200                 | 139          |
|        | SB100     | 150           | 1300                 | 172          |
|        | SB121     | 155           | 1300                 | 184          |
|        | SB130/140 | 165           | 1400                 | 224          |
| SB151  | 175       | 1600          | 289                  |              |

| BRAND    | MODEL        | DIAMETER (mm) | LENGTH (STANDARD mm) | WEIGHT (kgs) |
|----------|--------------|---------------|----------------------|--------------|
| FURUKAWA | F1/HB1G/FX15 | 36            | 400                  | 3            |
|          | F2/HB2G/FX25 | 45            | 450                  | 5            |
|          | F3/FX35      | 52            | 525                  | 8            |
|          | F4/FX45      | 60            | 560                  | 12           |
|          | F5/FX55      | 68            | 600                  | 16           |
|          | F6           | 75            | 730                  | 24           |
|          | F9           | 90            | 850                  | 41           |
|          | F12          | 105           | 1100                 | 71           |
|          | F19          | 120           | 1200                 | 102          |
|          | F22          | 135           | 1250                 | 134          |
|          | F27          | 140           | 1300                 | 150          |
|          | F35          | 150           | 1400                 | 186          |
|          | F45          | 165           | 1500                 | 240          |
|          | F70          | 180           | 1600                 | 305          |
|          | F100         | 210           | 1900                 | 493          |
|          | HB1G/F1/FX15 | 36            | 400                  | 3            |
|          | HB2G/F2/FX25 | 45            | 450                  | 5            |
|          | HB3G         | 60            | 560                  | 12           |
|          | HB5G         | 75            | 640                  | 21           |
|          | HB8G         | 90            | 750                  | 36           |
|          | HB10G        | 105           | 1000                 | 65           |
|          | HB15G        | 120           | 1100                 | 93           |
|          | HB20G        | 135           | 1200                 | 129          |
|          | HB30G        | 150           | 1300                 | 172          |
|          | HB40G        | 160           | 1400                 | 211          |
|          | FXJ125       | 110           | 1070                 | 76           |
|          | FXJ175       | 120           | 1100                 | 93           |
|          | FXJ275       | 140           | 1300                 | 150          |
|          | FXJ375       | 155           | 1400                 | 198          |
|          | FXJ475       | 170           | 1500                 | 255          |

**GENERAL CRUSHER**

**General Crusher RSG series**

It is designed for dismantling of Building



| Contents/Model     | Unit               | RSG Mini Series |          |           |           |           | RSG Series |           |           |           |  |
|--------------------|--------------------|-----------------|----------|-----------|-----------|-----------|------------|-----------|-----------|-----------|--|
|                    |                    | GSD20MRC        | GSD30MRC | GSD130MRC | GSD180MRC | GSD250MRC | GSD280MRC  | GSD320MRC | GSD350MRC | GSD420MRC |  |
| Weight             | kg                 | 210             | 320      | 500       | 1,150     | 1,580     | 1,850      | 2,750     | 3,500     | 5,200     |  |
| Length             | mm                 | 1,060           | 1,260    | 1,390     | 1,800     | 2,100     | 2,280      | 2,450     | 2,600     | 2,850     |  |
| Width              | mm                 | 720             | 770      | 955       | 1,080     | 1,280     | 1,450      | 1,720     | 2,100     | 2,350     |  |
| MAX. Opening Width | mm                 | 0~400           | 0~480    | 0~620     | 0~750     | 0~890     | 0~960      | 0~1,100   | 0~1,250   | 0~1,400   |  |
| Crashing Power A   | kn                 | 660             | 773      | 911       | 3,620     | 5,480     | 6,311      | 7,252     | 8,820     | 11,950    |  |
| Crashing Power B   | kn                 | 307             | 336      | 430       | 1,370     | 2,050     | 2,254      | 2,695     | 3,332     | 5,194     |  |
| Crashing Power C   | kn                 | 200             | 240      | 280       | 882       | 1,117     | 1,372      | 1,175     | 2,058     | 2,744     |  |
| Carrier Weight     | ton                | 1.5~3           | 2.5~5    | 5~8       | 12~15     | 18~22     | 20~22      | 24~32     | 32~38     | 38~48     |  |
| MAX. Pressure      | kg/cm <sup>2</sup> | 220             | 220      | 240       | 320       | 320       | 300        | 320       | 320       | 320       |  |
| Rotation           |                    | 360°            | 360      | 360       | 360       | 360       | 360        | 360       | 360       | 360       |  |

**PULVERIZER / PULVERIZER(Secondary Crusher)**

It is designed for crushing of reinforced concrete



| Contents/Model     | Unit               | FSM Series |         |         |         |         |
|--------------------|--------------------|------------|---------|---------|---------|---------|
|                    |                    | GSD180F    | GSD250F | GSD280F | GSD320F | GSD420F |
| Weight             | kg                 | 950        | 1,500   | 1,750   | 2,450   | 4,200   |
| Length             | mm                 | 1,920      | 2,020   | 2,200   | 2,350   | 2,900   |
| Width              | mm                 | 1,150      | 1,250   | 1,370   | 1,620   | 1,920   |
| MAX. Opening Width | mm                 | 0~700      | 0~880   | 0~950   | 0~1,100 | 0~1,280 |
| Crashing Power A   | kn                 | 1,880      | 2,175   | 2,528   | 2,636   | 3,586   |
| Crashing Power B   | kn                 | 774        | 980     | 1,136   | 1,205   | 1,764   |
| Crashing Power C   | kn                 | 597        | 735     | 842     | 901     | 1,470   |
| Carrier Weight     | ton                | 12~15      | 18~22   | 20~22   | 24~32   | 35~48   |
| MAX. Pressure      | kg/cm <sup>2</sup> | 260        | 280     | 300     | 300     | 300     |

**MC-SERIES / HYDRAULIC MULTI CRUSHER SERIES**

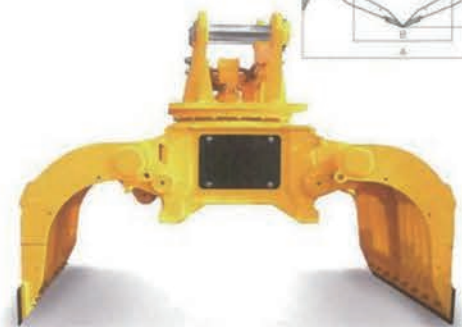
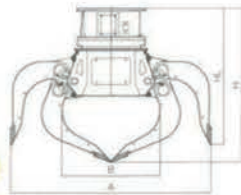
It is designed for Multi-purpose as dismantling of building and crushing of reinforced concrete.



| Contents/Model     | Unit               | RSM Series |          |           |
|--------------------|--------------------|------------|----------|-----------|
|                    |                    | GSD600MC   | GSD800MC | GSD1000MC |
| Weight             | kg                 | 1,100      | 1,550    | 2,500     |
| Length             | mm                 | 1,795      | 2,075    | 2,560     |
| Width              | mm                 | 1,130      | 1,267    | 1,768     |
| MAX. Opening Width | mm                 | 750        | 900      | 1,100     |
| Crashing Power A   | kn                 | 1,309      | 2,004    | 3,047     |
| Crashing Power B   | kn                 | 590        | 983      | 1,527     |
| Crashing Power C   | kn                 | 390        | 579      | 962       |
| Carrier Weight     | ton                | 10~15      | 18~24    | 28~36     |
| MAX. Pressure      | kg/cm <sup>2</sup> | 300        | 300      | 320       |
| Rotation           |                    | 360°       | 360      | 360       |

**DEMOLITION GRAPPLE**  
**DEMOLITION GRAPPLE SERIES**

Clearing, demolition Gardage disposal  
Rock disposal Pipes & scrap iron & logs



| Contents/Model | Unit  | GSD Series |         |         |          |
|----------------|-------|------------|---------|---------|----------|
|                |       | GSD 400    | GSD 600 | GSD 800 | GSD 1200 |
| Capacity       | Liter | 300        | 500     | 800     | 900      |
| Weight         | kg    | 900        | 1,370   | 2,100   | 2,500    |
| A              | mm    | 1,718      | 2,000   | 2,038   | 2,070    |
| B              | mm    | 1,058      | 1,210   | 1,502   | 1,700    |
| H              | mm    | 1,204      | 1,444   | 1,869   | 2,050    |
| HL             | mm    | 1,034      | 1,270   | 1,723   | 2,000    |
| Carrier Weight | ton   | 6.5~18     | 18~25   | 28~35   | 35~42    |

**ORANGE GRAPPLE**

**ORANGE GRAPPLE(SCRAP GRAB)SERIES**

Good design and robust structure  
Unlimited clockwise and anti-clockwise rotation  
Excellent performance at recycling job site  
Available from carrier vehicles from 2 to 40 tons



| Contents/Model | Unit  | GSD Series |        |         |         |
|----------------|-------|------------|--------|---------|---------|
|                |       | GSD 80     | GSD 81 | GSD 130 | GSD 151 |
| Capacity       | Liter | 400        | 500    | 700     | 900     |
| Carrier Weight | ton   | 12~18      | 18~25  | 25~32   | 32~45   |
| Weight         | kg    | 680        | 865    | 1,120   | 1,610   |
| Opening Width  | mm    | 1,700      | 1,820  | 2,000   | 2,360   |
| Closed Width   | mm    | 1,142      | 1,268  | 1,486   | 1,774   |
| Opening Height | mm    | 1,192      | 1,291  | 1,443   | 1,691   |
| Closed Height  | mm    | 1,464      | 1,567  | 1,751   | 2,037   |

**STONE GRAP**

**HYDRAULIC STONE GRAP SERIES**

- Landscaping, Stone layering, demolition and many others works.
- Wear and tear resistant special steel is used.
- Enclosed check valve for protective operation.



| Contents/Model     | Unit | GSD Series |        |         |         |
|--------------------|------|------------|--------|---------|---------|
|                    |      | GSD 03     | GSD 06 | GSD 08  | GSD 10  |
| Carrier Weight     | ton  | 3.5~6.5    | 12~16  | 21~26   | 27~32   |
| Weight             | kg   | 250        | 680    | 1,000   | 1,600   |
| Length             | mm   | 1,000      | 1,400  | 1,600   | 2,200   |
| MAX. Opening Width | mm   | 1,000      | 1,400  | 1,700   | 1,800   |
| MAX. Pressure      | bar  | 200        | 200    | 200     | 300     |
| Oil Flow           | lpm  | 35~35      | 80~140 | 130~180 | 180~260 |

**QUICK COUPLER**

**HYDRAULIC QUICK COUPLER SERIES**

It is Used for harden limp ground by vibrating.  
Each attachment can be changed easily by quick hitching.  
Safety is guaranteed by lock pin check valve.



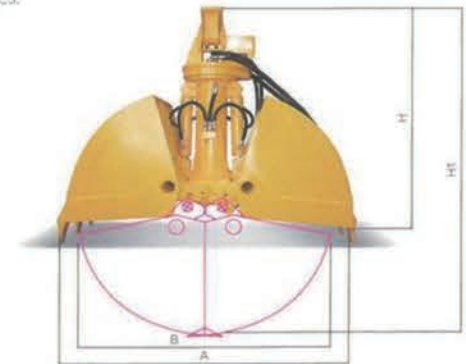
| Contents/Model   | Unit | GSD Series |         |         |         |
|------------------|------|------------|---------|---------|---------|
|                  |      | GSD 40     | GSD 50  | GSD 81  | GSD 130 |
| Carrier Weight   | ton  | 3~6        | 7~15    | 18~24   | 26~32   |
| Weight           | kg   | 55         | 120     | 250     | 450     |
| Working Pressure | bar  | 40~300     | 40~300  | 40~300  | 40~300  |
| Overall Height   | mm   | 170        | 240     | 300     | 340     |
| Width            | mm   | 217~232    | 304~389 | 390~426 | 486~506 |
| Overall Length   | mm   | 500        | 680     | 770     | 870     |

※ Specifications and feature are subject to change to change without prior to better improvement in quality.

**CLAMSHELL**

**HYDRAULIC CLAMSHELL SERIES**

- Used to handle, load and unload industrial wastes, grains, sands and rocks.
- Designed as powerful bucket with one or two vertical cylinders and is expected the long span of life since using hardox steel at wear surfaces and edges.



| Contents/Model | Unit  | GSD Series |        |         |
|----------------|-------|------------|--------|---------|
|                |       | GSD 50     | GSD 81 | GSD 200 |
| Capacity       | Liter | 500        | 700    | 920     |
| Carrier Weight | ton   | 12~18      | 18~25  | 50~60   |
| Weight         | kg    | 720        | 980    | 1,150   |
| Opening Width  | mm    | 1,780      | 2,100  | 2,200   |
| Closed Width   | mm    | 1,460      | 1,620  | 1,720   |
| Opening Height | mm    | 1,470      | 1,495  | 1,550   |
| Closed Height  | mm    | 1,880      | 1,980  | 2,080   |

**PILE DRIVER**

**HYDRAULIC PILE DRIVER SERIES**

- Automatic 360 rotation function.
- High frequency vibration & powerful centrifugal force.
- Highly effective for driving & extracting sheet pile, tube, H-beam.
- Extremely low noise & maximum excavator protection.
- Proven economic feasibility, best mobility and safety.



| Description           | Unit          | SVH 30      | SVH 35      |
|-----------------------|---------------|-------------|-------------|
| Eccentric Moment      | kg·m / in·lbs | 5.4 / 476   | 7.8 / 680   |
| Centrifugal Force     | kN            | 660         | 900         |
| Max Frequency         | rpm           | 2,700       | 2,700       |
| Amplitude             | mm            | 8           | 12          |
|                       | inch          | 0.31        | 0.40        |
| Oil Flow              | ℓ/m           | 170~210     | 170~210     |
| Hydraulic Pressure    | bar           | 200~250     | 200~250     |
|                       | psi           | 2,900~3,600 | 2,900~3,600 |
| Slewing               | degree        | 360         | 360         |
| Height(H)             | mm            | 1,980       | 2,030       |
|                       | inch          | 77          | 80          |
| Length(L)             | mm            | 710         | 730         |
|                       | inch          | 27          | 29          |
| Width(W)              | mm            | 1,095       | 1,140       |
|                       | inch          | 43          | 44          |
| Weight                | kg            | 1,690       | 1,830       |
|                       | lbs           | 3,725       | 4,034       |
| Application Excavator | ton           | 20~33       | 30~42       |

**COMPACTOR**

**HYDRAULIC COMPACTOR SERIES**

- Applicable excavator : 4~33ton
- Patented cushion elastomers for maximum protection to the excavator and operator from vibration.
- Highly effective in narrow ditch compacting.
- High quality hydraulic motor
- Road construction, building foundation and slope compaction.



| ITEM                         | Unit | JST 30  | JST 40  | JST 50    | JST 81    | JST 130   |
|------------------------------|------|---------|---------|-----------|-----------|-----------|
| Applicable Carrier           | ton  | 2.5~4   | 4~9     | 10~18     | 18~23     | 23~32     |
| Weight (without Top Bracket) | kg   | 105     | 280     | 355       | 635       | 950       |
| Max. Vibrating Force         | ton  | 0.61    | 1.9     | 6.55      | 8.4       | 12.3      |
| Max. Oil Flow                | lpm  | 40      | 80.2    | 154       | 206       | 257       |
| Rated Oil Flow               | lpm  | 25~36   | 50~72   | 100~140   | 130~187   | 160~234   |
| Operating Pressure           | bar  | 140~210 | 140~210 | 140~210   | 140~210   | 140~180   |
| Max. Vibration per Minute    | vpm  | 2,200   | 2,200   | 2,200     | 2,200     | 2,000     |
| Baseplate Size               | mm   | 400x700 | 500x900 | 600x1,100 | 800x1,200 | 900x1,300 |

**VIBO RIPPER**

**VIBO RIPPER SERIES**

- Higher productivity & efficiency than any other attachments.
- Maintenance free equipment with extremely low operating costs.
- Eco-friendly and noiseless equipment(80db).

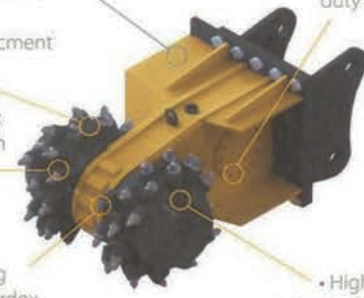


| Description           | Unit  | JVR 15H | JVR 20H | JVR 30H | JVR 40H | JVR 50H |
|-----------------------|-------|---------|---------|---------|---------|---------|
| Weight                | kg    | 1,500   | 2,500   | 3,100   | 4,600   | 5,600   |
| Flow                  | l/min | 100~120 | 170~190 | 180~200 | 200~220 | 250~260 |
| Oil Pressure          | bar   | 180~200 | 210~220 | 240~250 | 240~250 | 240~250 |
| Frequency             | Rpm   | 1,500   | 1,600   | 1,500   | 1,300   | 1,200   |
| Dimension (A)         | mm    | 1,160   | 1,130   | 1,400   | 2,140   | 2,260   |
| Dimension (B)         | mm    | 900     | 1,070   | 1,300   | 1,680   | 1,800   |
| Dimension (H)         | mm    | 1,250   | 1,376   | 1,454   | 1,860   | 1,950   |
| Dimension (L)         | mm    | 1,650   | 2,116   | 2,440   | 3,250   | 3,350   |
| Dimension (W)         | mm    | 680     | 705     | 800     | 1,100   | 1,150   |
| Air bag pressure      | bar   | 4       | 5       | 5       | 5       | 5       |
| Application Excavator | ton   | 12~16   | 18~26   | 20~30   | 28~39   | 38~55   |

**DRUM CUTTER**

**HYDRAULIC DRUM CUTTING SERIES**

- High torque motor for optimin productivity
- Easy pick replacement system
- Optimized pick pattern for high productivity
- Robust housing design with Hardox wear protection
- Robust spur gear / solid drive shaft and heavy duty sealing system
- High load resistant output shaft bearing with lubrication free system



| Description     | Unit  | JDC 500 | JDC 1400 | JDC 2500 | JDC 3600 | JDC 3600 |
|-----------------|-------|---------|----------|----------|----------|----------|
| Carrier         | tons  | 5~8     | 13~18    | 20~28    | 30~38    | 40~55    |
| Weight          | kg    | 310     | 1,000    | 1,600    | 1,650    | 2,450    |
| Length of (A)   | mm    | 800     | 960      | 1,100    | 1,100    | 1,300    |
| Width of (B)    | mm    | 500     | 680      | 830      | 830      | 900      |
| Diameter of (C) | mm    | 350     | 500      | 700      | 700      | 750      |
| Rotation Speed  | rpm   | 110     | 95       | 75       | 65       | 60       |
| Oil Flow        | l/min | 40~60   | 130      | 190      | 190      | 410      |
| Oil Pressure    | bar   | 350     | 350      | 350      | 350      | 350      |
| Rated Power     | Kw    | 30      | 80       | 120      | 120      | 160      |
| Number of Picks | Pcs   | 44      | 46       | 70       | 70       | 100      |



Compactor



Crusher



Demolition Grapple



Drum Cutter



JSC Hydraulic Compactor Plate



Orange Grapple



Pulverizer



Quick Coupler



Shear for 30 ton class



Stone Grab



Stone Grab



Stone Grab



Vibo Ripper



Vibo Ripper



Pile Driver