

# THE SMART MOBILE BATCHING PLANT.

**CARMIX**<sup>®</sup>  
4x4 mixers & dumpers

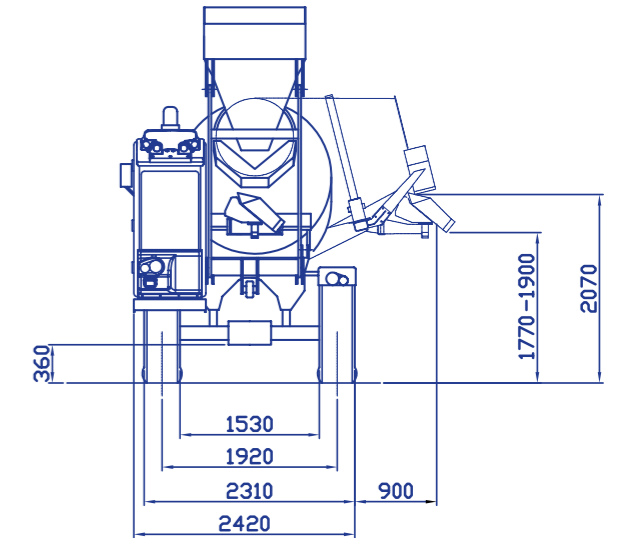
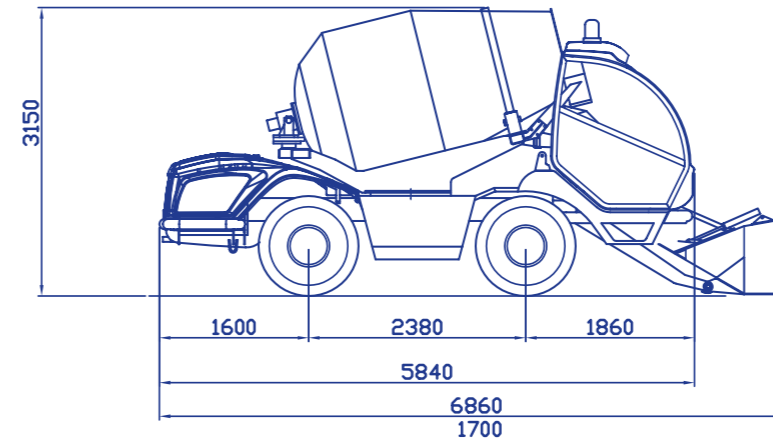


- . Carmix 3500TC
- . Carmix 5.5XL
- . Carmix 3.5TT
- . Carmix 2.5TT

**CARMIX**  
EVERYWHERE  
YOU BUILD

# CARMIX 3500TC

## TOTAL CONTROL



### ACCESSORIES ON DEMAND

**EUROPEAN VERSION: PERKINS 904J-E36TA TURBO-DIESEL STAGE V - TIER 4F, 90 KW (120 HP)**

PROMIX: In-drum probe, easy allows to analyze your concrete: slump, volume, temperature and ready-mix indicator: Your on site Lab!

Clima (air conditioning plus heater)

Spare wheel

Additional discharging chute (cm 100)

Additive Plant

# CARMIX 3500TC



**MIXING UNIT:** Drum capacity 4.850 liters. Concrete drum output: 3,5 m<sup>3</sup>. EN 206-1 IN SLUMP S1 Class, yield not vibrated. Double mixing screws, cover for emergency unloading. Drum rotation by hydraulic motor and planetary reducers. Mixing and discharging speed independent from r.p.m. of diesel engine. Discharging by reversing drum. The mixing unit is slewing hydraulically through 270° for high discharge over 2 m on the four sides of the vehicle.



**ENGINE:** Perkins 1104D-44 Turbo-Diesel, watercooled, 4 cylinders. Rated power KW 83 (111 HP) set at 2.300 rpm. Engine mounted transversal on the rear.



**TRANSMISSION:** Hydrostatic Bosch Rexroth. Pump and motor are connected to the differentials through a 2 speed reducer (working and transfer). 4 wheel drive and steering.



**AXLES:** Dana Spicer with oil bath disc brakes and planetary reducers.



**CHUTE:** Slewing and hydraulically tilting. Fitted with two pins easily detachable to increase the discharge height. 2 extra chutes included.



**WATER SYSTEM:** Self-contained. Hydraulic driven water pump, water meter, washing outlet 400 l/min High pressure water pump.



**GRADIENT:** Fully loaded 30%.



**BRAKES:** Oil bath disc brakes inside differential axles. Twin independent circuits. Negative hydraulic parking brake.



**TYRES:** Off road industrial type 16/70-20 PR 14.



**STEERING:** Hydrostatic. 3 ways steering. Radius: internal: mm. 1700, external mm 3.700.



**SPEED:** Working speed from 0 to 9 km/h, road transfer from 0 to 25 km/h. Electric servo control.



**NEW ROPS-FOPS CAB:** (UNI 11023) Comfort, safe and visibility matching edge design.



**HYDRAULIC SYSTEM:** Three circuits. 2 variable outlet pumps for hydrostatic transmission and drum rotation. 2 gear pumps for services. Inlet and outlet filter. Heat exchanger water/oil-air type.



**JOYMIX:** All hydraulic functions of shovel controlled by a single - fully servo controlled Joystick.



**CONCRETE-MATE:** Ultimate "4 sensors" electronic scale, easy to use and extra accurate for any kind of mix-design.



**PROMIX:** New In-drum probe, easy allows to analyze your concrete: slump, volume, temperature, and ready-mix indicator: Your on site Lab! (on request)



**LOADING SHOVEL SELF ARTICULATED:** Effective capacity per load 600 liters, complete with hydraulic opening gate. 6 buckets only per batch.



**ELECTRIC SYSTEM:** 12 Volt. 120 Ah battery for electric starter and road lighting. Safety battery cut-off.



**TANKS:** Water: 2x400 liters. Diesel: 115 liters, (approx. 10 hours work). Hydraulic oil: 80 liters.



**CHASSIS:** Steel profile specially engineered for off-road operations.



**WEIGHT:** About Kg. 7.400. Equally distributed on both axles.



**SAFETY:** Machine equipped with checking and block valves for maximum safety of the operator. Self control avoids drum to slew if shovel's arm is lifted.



**CATALOGUE:** The machine is equipped with Use and Maintenance and Spare Parts Manuals according to CE regulations.





**+ LOADING SHOVEL:**  
Effective capacity 600 liters, self articulated complete with hydraulic opening gate. 6 buckets only per batch.



**+ HIGH-VISIBILITY FRONT CAB:**  
Comfort, safety and visibility matching edge design.



**+ PROMIX:**  
Stainless steel electronic probe that from the drum continuously transfer to the cab main concrete data: SLUMP, temperature, volume, readiness.

**EXCLUSIVELY ON  
3500TC**

## CONCRETE-MATE

### INNOVATIVE CONCRETE-MATE FOR PERFECT CONTROL OF MIX DESIGN

A digital technology for a perfect certified mix design. Up to 15 different formulas and 99 types of materials can be selected with Concrete-Mate.

These elements can be used to obtain multiple combinations to fit any worksite requirement. When the software has stored a mix design, it indicates to the operator the dosage of each element, the sequence of operations and the working time for each process step, thus avoiding any possible error.

At the end of process the software issues a certificate "RMC PLANT standard" with analytical data of the mix design including the name of Committer, jobsite, operator, mixing time, any weight deviation between executed and recorded mix design by material and by total. Concrete-Mate also works with a software that adjusts the ratio water cement accordingly to the humidity stored.

### Management, quality and operating cost control from a remote Internet portal and smartphone app (IPOTweb & IPOTAPP).

The company has developed a web-based control system (IPOTweb) also available on app (IPOTAPP), Working in cloud. Benefits: accurate monitoring of production and product quality and perfect control of operating costs, for a clear, immediate return on investment of CARMIX products. Monitoring your operators.

Constant upgrades available online.



### CONCRETE-MATE CAN ALSO MANAGE HUMIDITY

07/03/2019	14:33
Start Date-Time: 07/03/2019 14:31	End Date-Time: 07/03/2019 14:33
RECIPE	
MIXTURE 21	
PRODUCT	WEIGHT (kg)
WATER	510
Target	e±0.0
CEMENT 42,5	1,140
Target	e±0.0
GRAVEL 1	2,400
Target	e±0.0
SAND 1	3,020
Target	e±0.7
TOTAL LOADED	7070
TARGET TOTAL	7050
TOTAL ERROR	e±-0.3
CUSTOMER	
GREENPLANT INC., LONDON ROAD WHEATLEY, OXFORD UK OX33 1JH	
MACHINE CODE CARMIX P35188	
OPERATOR ID STEVE	
TICKET NUMBER	00001
SIGNATURE	

RECIPE WITHOUT HUMIDITY

07/03/2019	14:40
Start Date-Time: 07/03/2019 14:36	End Date-Time: 07/03/2019 14:40
RECIPE	
MIXTURE 21	
PRODUCT	WEIGHT (kg)
WATER	420
Target	e±0.0
CEMENT 42,5	1,140
Target	e±0.0
GRAVEL 1	2,410
Target	e±0.4
SAND 1	3,100
Target	e±0.3
Humidity Percentage	3
TOTAL LOADED	7070
TARGET TOTAL	7050
TOTAL ERROR	e±-0.3
CUSTOMER	
GREENPLANT INC., LONDON ROAD WHEATLEY, OXFORD UK OX33 1JH	
MACHINE CODE CARMIX P35188	
OPERATOR ID STEVE	
TICKET NUMBER	00002
SIGNATURE	

RECIPE WITH 3% HUMIDITY



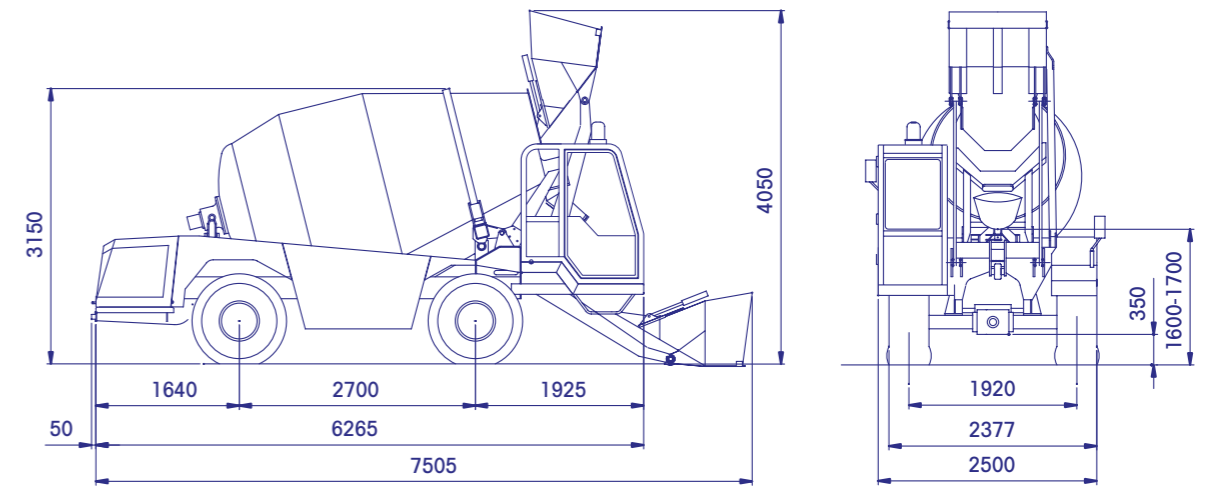
# CARMIX 3500TC





# CARMIX 5.5XL

## THE LARGEST OFF-ROAD MOBILE BATCHING PLANT



### ACCESSORIES ON DEMAND

PROMIX: In-drum probe, easy allows to analyze your concrete: slump, volume, temperature and ready-mix indicator: Your on site Lab!

Electronic weighing system "LOAD CELLS" with printer

High-pressure washing pump (90 BAR) with gun

Clima (air conditioning plus heater)

Air Conditioned

Heater

Spare wheel

Additional discharging chute (cm 100)

Additives Plant

# CARMIX 5.5XL



**MIXING UNIT:** Drum capacity 7.600 liters. Concrete drum output: 5,5 m<sup>3</sup>. EN 206-1 IN SLUMP S1 Class, yield not vibrate. Double mixing screws, cover for emergency unloading. Drum rotation by hydraulic motor and planetary reducers. Mixing and discharging speed independent from r.p.m. of diesel engine. Discharging by reversing drum.



**WATER SYSTEM:** Self-contained. Hydraulic driven water pump 400 lt/min, water meter, washing outlet. High pressure water pump (on request).



**GRADIENT:** Fully loaded 30%.



**BRAKES:** Oil bath disc brakes inside differential axles. Twin independent circuits. Negative hydraulic parking brake.



**TYRES:** Off road industrial type 18-19,5 PR 16.



**STEERING:** Hydrostatic. 3 way steering. Radius: internal mm. 1800 - external mm. 4000



**SPEED:** Working speed from 0 to 10 km/h, road transfer from 0 to 30 km/h.



**ENGINE:** Cummins Turbo-Diesel B5.9 TAA, water-cooled, 6 cylinders. Maximum power 112 kW. (150 HP). Engine mounted transversal on the rear.



**TRANSMISSION:** Hydrostatic Bosch Rexroth. Pump and motor are connected to the differentials through a 2 speed reducer (working and transfer). 4 wheel drive and steering.



**AXLES:** Dana Spicer with oil bath disc brakes and planetary reducers.



**CHUTE:** Hydraulic slewing and hydraulic tilting controlled from the cab.



**CABIN:** Front cab on side of loading shovel. ROPS-FOPS type (UNI U50.01.478.0) complete with double closing door. Clima, air conditioning heater available upon request.



**HYDRAULIC SYSTEM:** Three circuits. 2 variable outlet pumps for hydrostatic transmission and drum rotation. 2 gear pumps for services. Inlet and outlet filter. Heat exchanger water/oil-air type.



**JOYMIX:** All hydraulic functions of shovel controlled by a single - fully servo controlled Joystick.



**WEIGHING:** Electronic system. "Load cells" acting on the drum, display and printer in the cab. (on request)



**PROMIX:** In-drum probe, easy allows to analyze your concrete: slump, volume, temperature and ready-mix indicator: Your on site Lab! (on request)



**LOADING SHOVEL:** Effective capacity per load 600 liters, complete with hydraulic opening gate.



**ELECTRIC SYSTEM:** 12 Volt. 115 Ah battery for electric starter and road lighting. Safety battery cut-off.



**TANKS:** Water: 2x600 liters. Diesel: 150 liters. Hydraulic oil: 120 liters.



**CHASSIS:** Steel profile specially engineered for off-road operations.



**WEIGHT:** About Kg. 8.700, equally distributed on both axles



**SAFETY:** Machine equipped with checking and block valves for maximum safety of the operator.



**CATALOGUE:** The machine is equipped with Use and Maintenance and Spare Parts manuals according to CE regulations



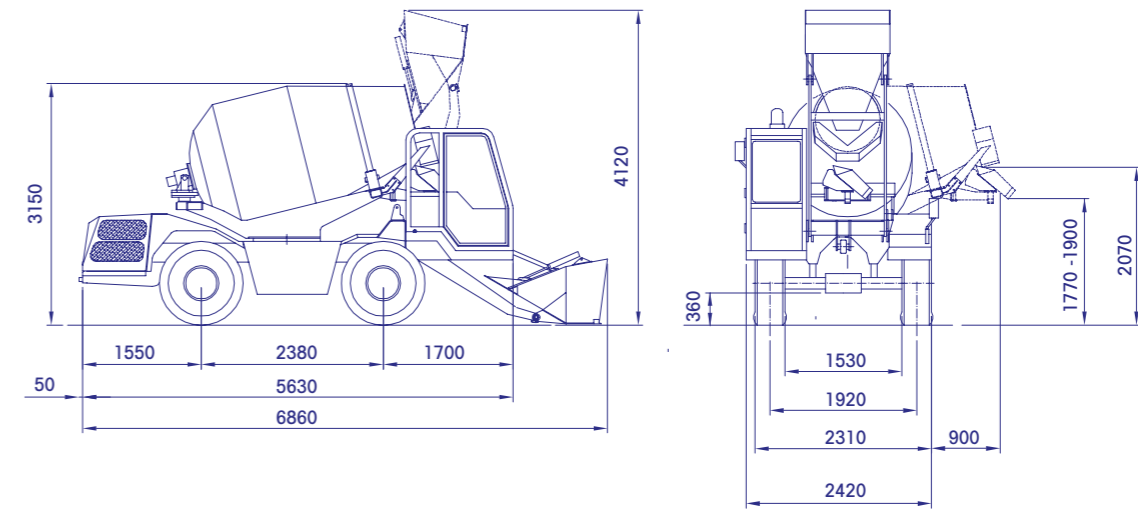
# CARMIX 5.5XL





# CARMIX 3.5TT

## THE TOP SELLING OFF-ROAD MOBILE BATCHING PLANT



### ACCESSORIES ON DEMAND

- .....
- PROMIX: In-drum probe, easy allows to analyze your concrete: slump, volume, temperature and ready-mix indicator: Your on site Lab!
- .....
- Electronic weighing system "LOAD CELLS" with printer
- .....
- High-pressure washing pump (90 BAR) with gun
- .....
- Clima (air conditioning plus heater)
- .....
- Air Conditioned
- .....
- Heater
- .....
- Spare wheel
- .....
- Additional discharging chute (cm 100)
- .....
- Additives Plant
- .....

# CARMIX 3.5TT



**MIXING UNIT:** Drum capacity 4.850 liters. Concrete drum output: 3,5 m<sup>3</sup>. EN 206-1 IN SLUMP S1 Class, yield not vibrated. Double mixing screws, cover for emergency unloading. Drum rotation by hydraulic motor and planetary reducers. Mixing and discharging speed independent from r.p.m. of diesel engine. Discharging by reversing drum. The mixing unit is slewing hydraulically through 270° for high discharge over 2 m on the four sides of the vehicle.



**ENGINE:** Perkins 1104 D-44 TA Turbo-Diesel, water-cooled, 4 cylinders. Rated power KW 83 (111 HP) set at 2.300 rpm. Engine mounted transversal on the rear. U.E. + U.S.A.: Perkins 854 E-34 TA Turbo-Diesel, water-cooled, 4 cylinders. Rated power KW 83 (111 HP) set at 2.300 rpm. Engine mounted transversal on the rear.



**TRANSMISSION:** Hydrostatic Bosch Rexroth. Pump and motor are connected to the differentials through a 2 speed reducer (working and transfer). 4 wheel drive and steering.



**AXLES:** Dana Spicer with oil bath disc brakes and planetary reducers.



**CHUTE:** Slewing and hydraulically tilting. Fitted with two pins easily detachable to increase the discharge height. 2 extra chutes included.



**WATER SYSTEM:** Self-contained. Hydraulic driven water pump 400 l/min, water meter, washing outlet. High pressure water pump (on request).



**GRADIENT:** Fully loaded 30%.



**BRAKES:** Oil bath disc brakes inside differential axles. Twin independent circuits. Negative hydraulic parking brake.



**TYRES:** Off road industrial type 16/70-20 PR 14.



**STEERING:** Hydrostatic. 3 ways steering. Radius: internal: mm. 1700, external mm 3.700.



**SPEED:** Working speed from 0 to 9 km/h, road transfer from 0 to 25 km/h. Electric servo control.



**CABIN:** Front cab on side of loading shovel. ROPS-FOPS type (UNI 11023) complete with double closing door. Clima, air conditioning heater available upon request.



**HYDRAULIC SYSTEM:** Three circuits. 2 variable outlet pumps for hydrostatic transmission and drum rotation. 2 gear pumps for services. Inlet and outlet filter. Heat exchanger water/oil-air type.



**JOYMIX:** All hydraulic functions of shovel controlled by a single fully servo controlled Joystick.



**WEIGHING:** Electronic system. "Load cells" acting on the drum, display and printer in the cab. (on request)



**PROMIX:** New In-drum probe, easy allows to analyze your concrete: slump, volume, temperature and ready-mix indicator: Your on site Lab! (on request)



**LOADING SHOVEL SELF ARTICULATED:** Effective capacity per load 600 liters, complete with hydraulic opening gate.



**ELECTRIC SYSTEM:** 12 Volt. 120 Ah battery for electric starter and road lighting. Safety battery cut-off.



**TANKS:** Water: 2x400 liters. Diesel: 115 liters. Hydraulic oil: 80 liters.



**CHASSIS:** Steel profile specially engineered for off-road operations.



**WEIGHT:** About Kg. 7.400. Equally distributed on both axles.



**SAFETY:** Machine equipped with checking and block valves for maximum safety of the operator. Self control avoids drum to slew if shovel's arm is lifted.



**CATALOGUE:** The machine is equipped with Use and Maintenance and Spare Parts Manuals according to CE regulations.



# CARMIX 3.5TT

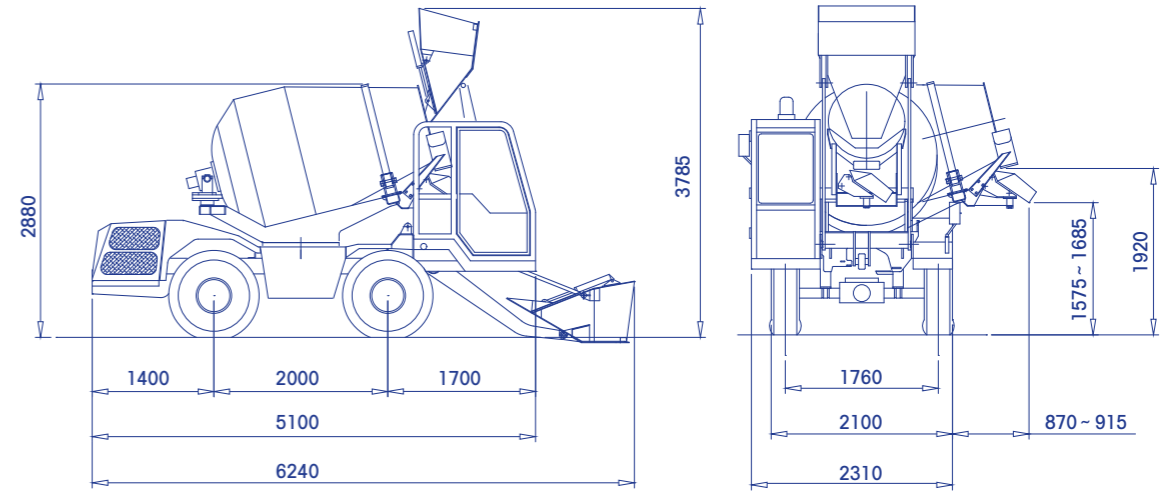






# CARMIX 2.5TT

TAYLOR-MADE TO YOUR PROJECTS



**ACCESSORIES  
ON DEMAND**

**EUROPEAN VERSION: PERKINS 904J-E36TA TURBO-DIESEL  
STAGE V 55.4 KW (74HP)**

- Electronic weighing system "LOAD CELLS" with printer
- High-pressure washing pump (90 BAR) with gun
- Clima (air conditioning plus heater)
- Air Conditioned
- Heater
- Spare wheel
- Additional discharging chute (cm 100)

# CARMIX 2.5TT

- MIXING UNIT:** Drum capacity 3.450 liters. Concrete drum output: 2,5 m<sup>3</sup>. EN 206-1 IN SLUMP S1 Class, yield not vibrated. Double mixing screws, cover for emergency unloading. Drum rotation by hydraulic motor and planetary reducers. Mixing and discharging speed independent from r.p.m. of diesel engine. Discharging by reversing drum. The mixing unit is slewing hydraulically through 270° for high discharge at 1,9 m on the four sides of the vehicle.
- ENGINE:** Perkins 1104D-44T Turbo-Diesel, water-cooled, 4 cylinders. Rated power KW 62,5 (84 HP) set at 2.200 rpm. Engine mounted transversal on the rear.
- TRANSMISSION:** Hydrostatic Bosch Rexroth. Pump and motor are connected to the differentials through a 2 speed reducer (working and transfer). 4 wheel drive and steering.
- AXLES:** Dana Spicer with oil bath disc brakes and planetary reducers.

- CHUTE:** Slewing and hydraulically tilting. Fitted with two pins easily detachable to increase the discharge height. 2 extra chutes included.
- WATER SYSTEM:** Self-contained. Hydraulic driven water pump 400 lt/min, water meter, washing outlet. High pressure water pump (on request).
- GRADIENT:** Fully loaded 30%.
- BRAKES:** Oil bath disc brakes inside differential axles. Twin independent circuits. Negative hydraulic parking brake.
- TYRES:** Off road industrial type 12.5-20 PR 12.
- STEERING:** Hydrostatic. 3 ways steering. Radius: internal: mm. 1500, external mm 3500.

- SPEED:** Working speed from 0 to 9 km/h, road transfer from 0 to 25 km/h. Electric servo control.
- CABIN:** Front cab on side of loading shovel. ROPS-FOPS type (UNI 11023) complete with double closing door. Clima, air conditioning heater available upon request.
- HYDRAULIC SYSTEM:** Three circuits. 2 variable outlet pumps for hydrostatic transmission and drum rotation. 2 gear pumps for services. Inlet and outlet filter. Heat exchanger water/oil-air type.
- JOYMIX:** All hydraulic functions of shovel controlled by a single - fully servo controlled Joystick.
- WEIGHING:** Electronic system. "Load cells" acting on the drum, display and printer in the cab. (on request)
- LOADING SHOVEL SELF ARTICULATED:** Effective capacity per load 400 liters, complete with hydraulic opening gate.
- ELECTRIC SYSTEM:** 12 Volt. 120 Ah battery for electric starter and road lighting. Safety battery cut-off.
- TANKS:** Water: 2x270 liters. Diesel: 105 liters. Hydraulic oil: 80 liters.
- CHASSIS:** Steel profile specially engineered for off-road operations.
- WEIGHT:** About Kg. 6.000. Equally distributed on both axles.
- SAFETY:** Machine equipped with checking and block valves for maximum safety of the operator. Self control avoids drum to slew if shovel's arm is lifted.
- CATALOGUE:** The machine is equipped with Use and Maintenance and Spare Parts Manuals according to CE regulations.



# CARMIX 2.5TT





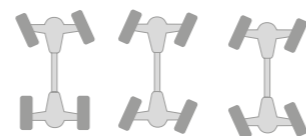
# WHAT MAKES CARMIX THE NUMBER ONE

- Front driving cab to assure perfect visibility and excellent comfort to the operator.
- Rich fully equipped cockpit. Ergonomic Joymix; one joystick operates all main functions.
- Self-Articulated loading shovel with hydraulic opening gate for a more accurate loading of aggregates and cement. 6 buckets only per batch.
- Rear engine: easy checks. Fully balanced equipment.
- Oil-bath built-in disc brakes: no maintenance at all and total reliability.
- CARMIX selects the best suppliers in order to assure its customers not only with top quality but also their worldwide after-sale network.
- Among others we are proud to name PERKINS engines, BOSCH-REXROTH transmissions, DANFOSS hydraulic motors, DANA SPICER axles.
- Over 40 Years of experience in the toughest jobsites.



## QUALITY CONTROL

Carmix is the only company that works and tests every machine for 8 hours prior to painting them, in order to ensure a maximum reliability and efficiency without equals.



4 X 4 X 4

AVAILABLE ON  
5.5XL - 3.5TT - 2.5TT

## LOAD CELLS

### LOAD CELLS WEIGHING SYSTEM FOR PERFECT CONTROL OF MIX DESIGN

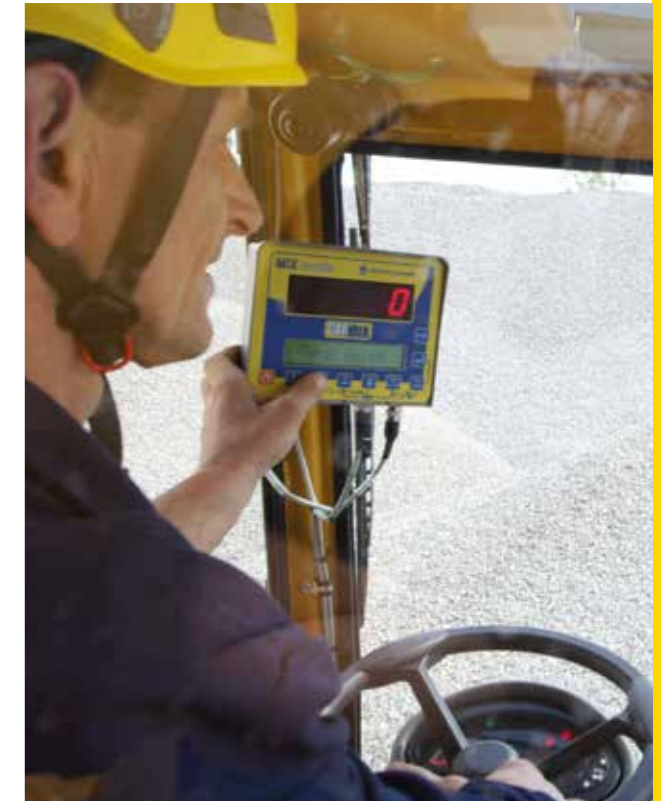
#### + 4 electronic Load Cells

at the bottom of the drum allow to dose and verify instantly all the aggregates loaded inside the drum, water included.

+ You can easily store up to 99 different mix-design with up to 24 components per time.

+ At the end of last loading the ticket is printed out automatically.

+ All data can be saved on a pen drive (optional).



METALGALANTE  
CARMIX 5.5

```

-----
Date: 19/12/2018
Load: R1 "1M"
Starting Time: 17:13:15
Ending Time: 17:28:55

N. Prog Exec Time Err.%
1 140 140 17:14 +0.0
2 360 390 17:22 +8.3
3 900 900 17:24 +0.0
4 900 910 17:28 +1.1

Total Prog. = 2300 Kg
Total Exec. = 2340 Kg
Error = +1.7 %
-----
    
```









# NUMBER ONE FOR SATISFACTION

   #BeACarmixMan #BeACarmixWoman

Noventa di Piave (Venice) ITALY  
T. +39 0421 65191 - info@carmix.com