



济南富诚 液压设备有限公司

产品画册

Jinan Fucheng Hydraulic Equipment Co., Ltd



济南富诚液压设备有限公司是一家集生产、贸易、技术、服务于一体的专业型公司，拥有独立进出口经营权。

About Us

公司经过多年的市场验证，拥有自己的生产加工基地，液压技术研发团队。能为客户提供**液压系统设计配套服务**，**解决疑难杂症**，**液压故障诊断和维修服务**，**免费咨询**等业务。

公司产品比遍布各个行业，主要配套**石油修井机**、**套管钳**、**钻机**、**铲运机**、**煤矿搬运支架车**、**矿卡**、**凿岩台车**、**装载机**行业。

公司提供高品质产品和贴心的售后服务，得到了广大客户的一致好评。本着务实、创新、学习的精神，愿与国内外同行竭诚合作、共谋发展。

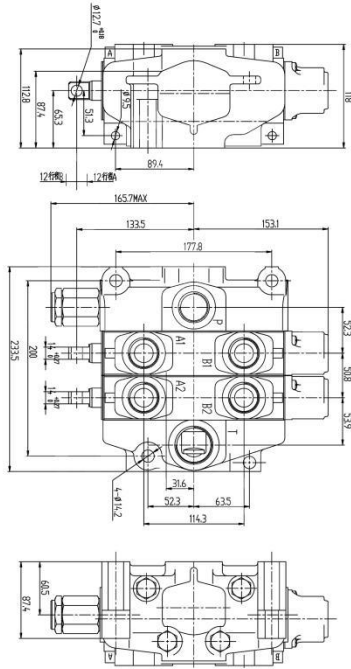


VA/VG35阀



VA35阀是用于工程机械的开式系统多路方向控制阀。

- 额定输入压力为2500 PSI，最大泵流量为65 GPM。
- 标准最大工作油口尺寸为SAE-16。
- 输入油口尺寸通常是SAE-20和输出油口尺寸是SAE-24。
- 标准的驱动方式是弹簧复位、机械定位、气动和液压遥控



进油片



Specifications

Nominal Flow Up to 246 LPM (65 GPM)

Operating Pressure VA35 Up to 172 Bar (2500 PSI)
VG35 Up to 241 Bar (3500 PSI)

Part Number	Model Number	Description	Porting
348-9175-005	VA35-A880	Inlet	SAE 16 Porting
348-9174-004	VA35-CFA80	Combined Flow Mid Inlet	SAE 16 Porting
348-9174-002	VA35-SFA80	Split Flow Mid Inlet	SAE 16 Porting
391-1873-003	VA35-MRV-1	Main Relief 55 - 138 Bar (800 - 2000 PSI)	N/A
391-1873-004	VA35-MRV-2	Main Relief 138 - 172 Bar (2000 - 2500 PSI)	N/A
348-9175-008	VG35-A880	Inlet	SAE 16 Porting
348-9174-006	VG35-CFA80	Combined Flow Mid Inlet	SAE 16 Porting
348-9174-005	VG35-SFA80	Split Flow Mid Inlet	SAE 16 Porting
391-1873-137	VG35-HMRV	Main Relief 193 - 241 Bar (2800 - 3500 PSI)	N/A

工作片



Pneumatic

Part Number	Model Number	Description	Porting
348-9172-030	VA35-DV8	Low Boy Double-Acting Cylinder Spool	SAE 16
348-9171-016	VA35-SV8	Low Boy Single-Acting Cylinder Spool	SAE 16
348-9172-021	VA35-HV855	High Boy Double-Acting Cylinder Spool	SAE 16
348-9172-066	VA35-LV855	High Boy Double-Acting Motor Spool	SAE 16

Part Number	Model Number	Description	Porting
348-9172-075	VG35-HV855	High Boy Double-Acting Cylinder Spool	SAE 16

* Hi boy port accessories come standard unplugged and must use either a port option or port plug for operation.

Part Number	Model Number	Description	Porting
348-9172-003	VA35-DA8	Low Boy Double-Acting Cylinder Spool	SAE 16
348-9172-006	VA35-MA8	Low Boy Double-Acting Motor Spool	SAE 16
348-9171-003	VA35-SA8	Low Boy Single-Acting Cylinder Spool	SAE 16
348-9172-009	VA35-HA855	High Boy Double-Acting Cylinder Spool	SAE 16
348-9172-012	VA35-LA855	High Boy Double-Acting Motor Spool	SAE 16
348-9171-006	VA35-JA805	High Boy Single-Acting Cylinder Spool	SAE 16

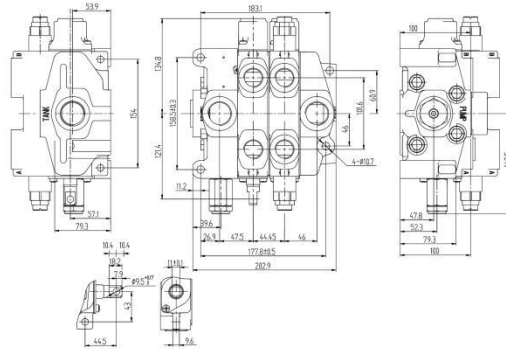
Part Number	Model Number	Description	Porting
348-9172-048	VG35-DA8	Low Boy Double-Acting Cylinder Spool	SAE 16
348-9172-049	VG35-MA8	Low Boy Double-Acting Motor Spool	SAE 16
348-9172-052	VG35-HA855	High Boy Double-Acting Cylinder Spool	SAE 16
348-9172-053	VG35-LA855	High Boy Double-Acting Motor Spool	SAE 16
348-9171-011	VG35-JA805	High Boy Single-Acting Cylinder Spool	SAE 16

出油片



Part Number	Model Number	Description	Porting
348-9176-002	VA35-TR99	Tank Return	SAE 20
348-9176-004	VA35-PB90	Power Beyond	SAE 20
348-9176-007	VG35-TTR99	Tank Return	SAE 20
348-9176-008	VG35-TTB90	Power Beyond Porting	SAE 20

VA/VG20阀



进油片

Specifications

Nominal Flow Up to 170 LPM (45 GPM)
Operating Pressure VA20 Up to 172 Bar (2500 PSI)
 VG20 Up to 241 Bar (3500 PSI)

Part Number	Model Number	Description	Porting
347-9175-002	VA20-A880	Inlet	SAE 16 Porting
347-9174-004	VA20-CFA70	Combined Flow Mid Inlet	SAE 12 Porting
347-9174-002	VA20-SFA70	Split Flow Mid Inlet	SAE 12 Porting
391-1873-001	VA20-MRV	Adjustable Main Relief	N/A
391-1873-002	V20-MRVP	Main Relief Plug	N/A
347-9175-010	VG20-A880	Inlet	SAE 16 Porting
347-9174-006	VG20-CFA70	Combined Flow Mid Inlet	SAE 12 Porting
347-9174-005	VG20-SFA70	Split Flow Mid Inlet	SAE 12 Porting
391-1873-128	VG20-HMRF	Adjustable Main Relief	N/A

工作片



Spring Return

Part Number	Model Number	Description	Porting
347-9172-003	VA20-DA7	Low Boy Double-Acting Cylinder Spool	SAE 12
347-9172-006	VA20-MA7	Low Boy Double-Acting Motor Spool	SAE 12
347-9171-003	VA20-SA7	Low Boy Single-Acting Cylinder Spool	SAE 12
347-9172-009	VA20-HA755	High Boy Double-Acting Cylinder Spool	SAE 12
347-9172-012	VA20-LA755	High Boy Double-Acting Motor Spool	SAE 12
347-9171-006	VA20-JA705	High Boy Single-Acting Cylinder Spool	SAE 12
347-9172-052	VG20-DA7	Low Boy Double-Acting Cylinder Spool	SAE 12
347-9172-053	VG20-MA7	Low Boy Double-Acting Motor Spool	SAE 12
347-9172-056	VG20-HA755	High Boy Double-Acting Cylinder Spool	SAE 12
347-9172-057	VG20-LA755	High Boy Double-Acting Motor Spool	SAE 12
347-9171-007	VG20-JA705	High Boy Single-Acting Cylinder Spool	SAE 12

* Hi boy port accessories come standard unplugged and must use either a port option or port plug for operation.



出油片

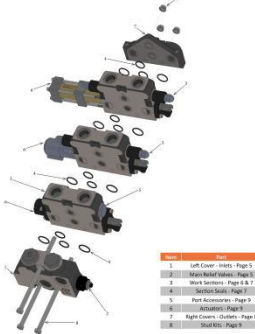


Part Number	Model Number	Description	Porting
347-9178-002	VA20-TR88	Tank Return	SAE 16
347-9178-004	VA20-PB80	Power Beyond End Porting	SAE 16
347-9178-005	VA20-PB08	Power Beyond Top Porting	SAE 16
347-9178-007	VG20-TTR88	Tank Return	SAE 16
347-9178-008	VG20-TTB80	Power Beyond Porting	SAE 16

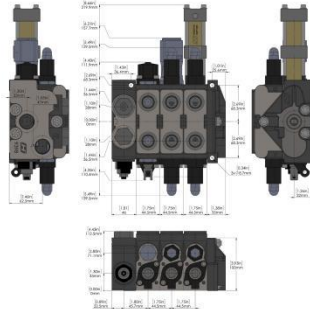
V20 阀



V20 Exploded View



Dimensional Data



配件



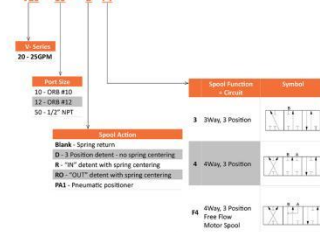
V20 Inlets 进油片参数



Part Number	Model Number	Description	Porting
08650029	20-LC-12	Standard Inlet	SAE 12
08650004	20-12-SF	Split Flow Mid Inlet	SAE 12
08650003	20-12-CF	Combined Flow Mid Inlet	SAE 12

Specifications
 Nominal Flow: Up to 95 LPM (25 GPM)
 Operating Pressure: Up to 240 Bar (3500 PSI)

Work Section Coding Table 工作片参数



Outlet - Coding Table 出油片参数



Outlet Covers (Housing No. 7770)

Part Number	Cross Reference	Replacement for Gasket	Port Size & Location 1/4" NPT (F)	Port Size & Location SAE 10 (F)	Port Size & Location SAE 12 (F)	Material for Power Beyond (NPT)
V20-RC-10-E	13600145	20-RC-10-E	END	END	END	END
V20-RC-12-E	13600146	20-RC-12-E	END	END	END	END
V20-RC-15-E	13600147	20-RC-15-E	END	END	END	END

Power Beyond

Part Number	Cross Reference	Replacement for Gasket	Port Size & Location 1/4" NPT (F)	Port Size & Location SAE 10 (F)	Material for Power Beyond (NPT)
V20-RC-12-E-MY	8600024	20-RC-12-E-MY	END	END	X
V20-RC-15-E-MY	8600027	20-RC-15-E-MY	END	END	X

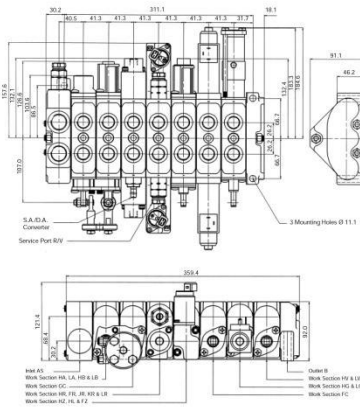
Outlet Cover Option Kits (Housing No. 7770)

Part Number	Cross Reference	Replacement for Gasket	Description
V20-K-08-F	8650102	K-20-08-F	SAE 8 Power Beyond Sleeve
V20-K-10-F	8650098	K-20-10-F	SAE 10 Power Beyond Sleeve
V20-K-12-F	12748001	K-20-12-F	SAE 12 Power Beyond Sleeve
V20-K-50-F	8650091	K-20-50-F	1/2" NPT Power Beyond Sleeve
V20-K-C	8650099	K-20-C	Closed Cover Plug
V20-K-X	8650100	K-20-X	Conversion Plug

KA18 阀



KA18 方向控制阀适用于开式和闭式中心回路，采用分段式结构，压力损失低。KA18 系列专为并联、串联和串联电路而设计，最多可容纳 9 个不同类型的部分。流量可达 45~82 升，KA 阀系列具有多种阀芯类型、液压系统保护、工作部分以及入口和出口位置可供选择，是一种多功能的设计，可以满足大多数应用要求。



Inlet Section Porting Size Options

Each of the above inlet sections are available with any of the following porting sizes:

Porting Description	Porting Code
No Port	0
1/2" BSPP	1
3/4" BSPP	2
SAE-10 (7/8" JIC)	4
SAE-12 (1 1/16" JIC)	5
M22 ISO 6149	6
M27 ISO 6149	B

KA18 阀分为进油片、工作片、出油片

进油片



工作片



出油片

