



# YANTAI TIANBING

Construction Machinery Co.,Ltd



## YANTAI TIANBING CONSTRUCTION MACHINERY CO.,LTD

Address: 150 meters east of Wangyuan Industrial Park, Huli town, Fushan District, Yantai, Shandong, China. PC: 265509  
Tel: +86-535-6796787 Fax: +86-535-6796787  
Email: sales03@ytwangyuan.com  
Website: www.tbbreaker.com





# ABOUT US YANTAI TIANBING

Yantai Tianbing Construction Machinery Co., Ltd is a professional manufacturer and exporter committed to development, production and sales of hydraulic breakers, quick couplers, rippers, compactors, shears, crushers, pulverizers, grapples and other attachments for construction machinery.

Covering an area of 53,000m<sup>2</sup>, including 40,000m<sup>2</sup> of standard production workshop, Tianbing has introduced the most advanced high-precision processing equipment, including horizontal CNC boring and milling center, vertical CNC grinding center, which were imported from Germany, Japan and South Korea. Tianbing always regards product quality as the life of the enterprise, and uses various advanced and high-precision production and testing equipment to ensure that the products are fully and strictly inspected before leaving the factory. The sizes of the product key parts are detected by Japan's Mitutoyo three-coordinate testing machine, which greatly improves the accuracy of product performance.

With the aim to provide excellent quality, competitive price, good service and a long-term business relationship of mutual benefit with customers and to become one of the most reliable Chinese supplier for the customers all over the world, we now have more than 200 distributors at home and abroad. The products have been exported to over 60 countries, i.e Germany, USA, Russia, France, Italy, Australia, Canada, etc., receiving the customer consistent high praise.

Tianbing has the first-class research and development technical team, advanced production equipment, unique processing technology, perfect management system and several top-notch talents in the industries of machinery, electrical, instrumentation and internet. It is a vigorous enterprise. Tianbing looks forward to developing a long-term partner relations with you and strives for your development. We, always work in a way not only to close a one-time deal, but also to make you our regular customer for many years.

Tianbing sincerely hope to create the future with YOU!

## OUR CULTURE

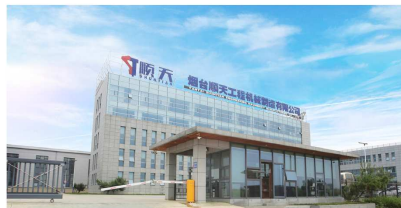
Quality for growth, technology for development and service forever

## OUR VALUES

Trust, Quality, Responsibility, Innovation, Service, Win-Win.

## OUR MISSION

To be the most reliable manufacturer in hydraulic breaker & attachments and to provide the best support for customers.



Covering an area of

**53,000**  
m<sup>2</sup>  
WORKSHOP

More than 200 distributors

**200**  
DISTRIBUTORS

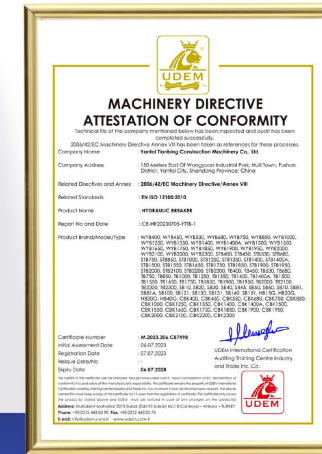
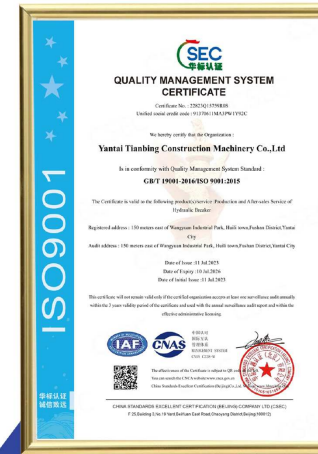
Sales network

**60**  
COUNTRIES



YANTAI TIANBING CONSTRUCTION MACHINERY CO.,LTD

# Qualifications and Honors



**40** ITEMS  
Invention Patent

# Workshop

7S Production management standard

- Seiri
- Seiton
- Seiso
- Seiketsu
- Shitsuke
- Safety
- Save



German horizontal CNC center



Vertical CNC processing equipment



Vertical grinding equipment from Japan



CNC Boring Equipment from South Korea



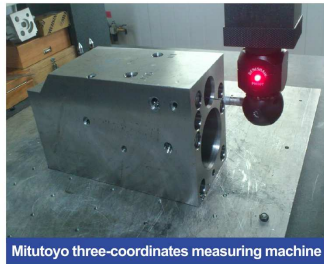
Vertical grinding center



Heat treatment line



DMC Horizontal CNC processing equipment



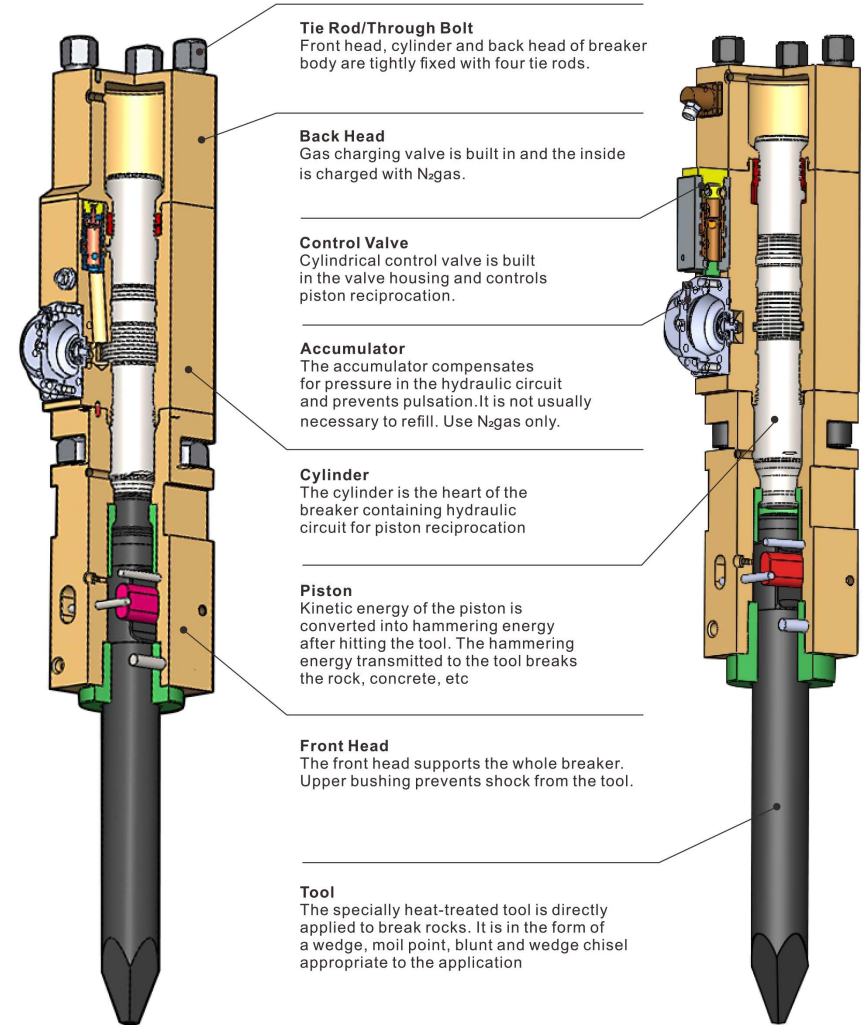
Mitutoyo three-coordinates measuring machine



Ultrasonic automatic cleaning line

### Internal Valve Type

### External Valve Type



## WHAT GOOD QUALITY PRODUCT MEANS TO US

### State-of-the-art technology and processing equipment

We use the most advanced technology and CNC machining centers. We do have the industry's most modern production workshop. Equipped with over 120 processing equipment, including horizontal CNC boring and milling center, vertical CNC grinding center which are imported from Germany, Japan and South Korea.

### High quality raw materials are the basic

We have introduced international advanced quality testing equipment, we have selected top quality raw material, which is manufactured from the famous steel factories and are subject to the finest heat treatment process.

### Strict quality standards and high precision testing equipment

We have introduced international advanced quality testing equipment and implemented a strict and complete quality control system. All the raw material and finished products have to go through multi-level inspection and testing

### On-time delivery

We respect your time and ensure that the order are delivered to you by the promised deadline. In the rare event that we cannot keep our promise, we will definitely provide you with a solution that will satisfy you.

### Professional after-sales team

We own a professional after-sales team with over decade's experiences in hydraulic breakers, which can answer any question in the shortest time. Any claims will be solved within 24 hours.



## Excellent Product Performance

- Enhanced durability
- Long piston stroke
- Super striking force
- Reliable
- Environment friendly
- Easy maintenance
- Excellent performance

## TB SERIES HYDRAULIC BREAKERS

### D-type

#### Light Duty Breaker >>

Model	Unit	TB400D	TB450D	TB530D	TB680D	TB750D	TB850D	TB1000D	TB1250D
Operating Weight	kg	101	113	175	267	368	505	776	1,364
	lbs	220	249	385	588	811	1,113	1,710	3,007
Operating Pressure	bar/psi	90-120	90-120	90-120	110-140	120-150	130-160	150-170	150-170
Setting Pressure	bar/psi	150	150	150	170	180	190	210	210
Required Oil Flow	l/min	15-30	20-40	20-50	40-70	50-90	60-100	80-110	90-120
	gpm	4-8	5-10	5-13	10-18	13-24	16-26	20-29	22-32
Tool	Diameter	mm	40	45	53	68	75	85	100
	Weight	kg	7	8	9	16	21	30	55
	Length	mm	400	500	580	700	750	850	1,000
Impact Rate	bpm	800-1100	700-1200	600-1100	500-900	400-800	400-800	350-700	350-500
Hydraulic Hose	inch	1/2	1/2	1/2	1/2	1/2	3/4	3/4	1
Suitable Excavator	ton	0.8~2.5	1.2~3	2.5~4.5	4~7	6~9	7~14	11~15	15-18



#### Medium Duty Breaker >>

Model	Unit	TB1350D	TB1400D	TB1400LD	TB1400AD	TB1500D	
Operating Weight	kg	1,487	1,737	1,820	1,770	2,150	
	lbs	3,278	3,829	4,012	3,900	4,740	
Operating Pressure	bar/psi	160-180	160-180	160-180	160-180	160-180	
Setting Pressure	bar/psi	210	220	220	220	230	
Required Oil Flow	l/min	100-150	120-180	120-180	120-180	130-190	
	gpm	26-40	32-47	32-47	32-47	34-50	
Tool	Diameter	mm	135	140	140	150	
	Weight	kg	127	134	134	134	170
	Length	mm	1,300	1,300	1,300	1,300	1,400
Impact Rate	bpm	350-600	350-500	350-500	350-500	300-450	
Hydraulic Hose	inch	1	1	1	1	1 1/4	
Suitable Excavator	ton	18 ~ 21	20 ~ 26	20 ~ 26	20 ~ 26	25 ~ 28	



#### Heavy Duty Breaker >>

Model	Unit	TB1550D	TB1650D	TB1700D	TB1750D	TB1900D	TB2000D	TB2100D	TB2300D	TB2300D
Operating Weight	kg	2,503	3,096	3,200	3,735	4,830	5,030	6,400	6,600	7,590
	lbs	5,518	6,825	7,054	8,234	10,648	11,089	14,110	14,550	16,733
Operating Pressure	bar/psi	160-180	160-180	160-190	160-190	240-260	260-280	260-280	270-280	270-280
Setting Pressure	bar/psi	230	230	230	230	280	280	280	280	280
Required Oil Flow	l/min	180-240	200-260	210-290	210-290	280-350	300-380	360-450	360-450	360-450
	gpm	47-63	53-69	55-77	55-77	74-93	79-100	95-119	95-119	95-119
Tool	Diameter	mm	155	165	175	175	190	195	200	220
	Weight	kg	183	220	260	260	255	332	345	384
	Length	mm	1,500	1,600	1,600	1,600	1,700	1,700	1,800	1,800
Impact Rate	bpm	350-450	250-400	200-350	200-350	150-200	180-200	180-200	100-110	100-130
Hydraulic Hose	inch	1 1/4	1 1/4	1 1/4	1 1/4	1 1/4	1 1/4	1 1/4	1 1/2	1 1/2
Suitable Excavator	ton	28 ~ 35	30 ~ 40	40 ~ 55	40 ~ 55	45-55	50-65	55-65	60-70	70-80



Note:

- The above specifications are subject to change without prior notice for the quality enhancement.
- The operating weight is for reference only, the specific weight is subject to the actual excavator connection dimensions
- Color and bracket type are available by customer's request.

# T-type

## Light Duty Breaker >>

Model	Unit	TB400T	TB450T	TB530T	TB680T	TB750T	TB850T	TB1000T	TB1250T
Operating Weight	kg	96	110	223	296	404	647	865	1,447
	lbs	211	242	492	653	890	1,426	1,907	3,190
Operating Pressure	bar/psi	90-120	90-120	90-120	110-140	130-160	150-170	150-170	150-170
Setting Pressure	bar/psi	150	150	150	170	180	190	210	210
Required Oil Flow	l/min	15-30	20-40	20-50	40-70	50-90	60-100	80-110	90-120
	Diameter	mm	40	45	53	68	75	85	100
Tool	Weight	kg	7	8	9	16	21	30	55
	Length	mm	400	500	580	700	750	850	1,000
Impact Rate	bpm	800-1100	700-1200	600-1100	500-900	400-800	400-800	350-700	350-650
Hydraulic Hose	inch	1/2	1/2	1/2	1/2	1/2	3/4	3/4	1
Suitable Excavator	ton	0.8~2.5	1.2~3	2.5~4.5	4~7	6~9	7~14	11~15	15-18



## Medium Duty Breaker >>

Model	Unit	TB1350T	TB1400T	TB1400LT	TB1400AT	TB1500T
Operating Weight	kg	1,705	1,940	2,025	1,973	2,478
	lbs	3,758	4,356	4,464	4,349	5,463
Operating Pressure	bar/psi	160-180	160-180	160-180	160-180	160-180
Setting Pressure	bar/psi	210	220	220	220	230
Required Oil Flow	l/min	100-150	120-180	120-180	120-180	130-190
	Diameter	mm	135	140	140	140
Tool	Weight	kg	127	134	134	170
	Length	mm	1,300	1,300	1,300	1,300
Impact Rate	bpm	350-600	350-500	350-500	350-500	300-450
Hydraulic Hose	inch	1	1	1	1	1 1/4
Suitable Excavator	ton	18 ~ 21	20 ~ 26	20 ~ 26	20 ~ 26	25 ~ 28



## Heavy Duty Breaker >>

Model	Unit	TB1550T	TB1650T	TB1700T	TB1750T	TB1900T	TB1950T	TB2000T
Operating Weight	kg	2,544	2,728	2,900	4,015	5,080	5,250	5,500
	lbs	5,608	6,014	6,393	8,851	11,200	11,574	12,125
Operating Pressure	bar/psi	160-180	160-180	160-190	160-190	240-260	260-280	260-280
Setting Pressure	bar/psi	230	230	230	230	280	280	280
Required Oil Flow	l/min	180-240	200-260	210-290	210-290	220-260	280-360	300-380
	Diameter	mm	155	165	175	175	190	195
Tool	Weight	kg	183	220	260	260	295	331
	Length	mm	1,500	1,600	1,600	1,600	1,700	1,700
Impact Rate	bpm	350-450	250-400	200-350	200-350	150-200	180-200	180-200
Hydraulic Hose	inch	1 1/4	1 1/4	1 1/4	1 1/4	1 1/4	1 1/4	1 1/4
Suitable Excavator	ton	28 ~ 35	30 ~ 40	40 ~ 55	40 ~ 55	45~55	50~65	55-65



Note:

- 1.The above specifications are subject to change without prior notice for the quality enhancement.
- 2.Color and bracket type are available by customer's request.
- 3.The operating weight with mounting cap, it is for reference only, the specific weight is subject to the actual excavator connection dimensions

# S-type

## Light Duty Breaker >>

Model	Unit	TB400S	TB450S	TB530S	TB680S	TB750S	TB850S	TB1000S	TB1250S
Operating Weight	kg	129	148	206	337	425	697	865	1,239
	lbs	284	326	454	743	937	1,536	1,907	2,732
Operating Pressure	bar/psi	90-120	90-120	90-120	110-140	120-150	130-160	150-170	150-170
Setting Pressure	bar/psi	150	150	150	170	180	190	210	210
Required Oil Flow	l/min	15-30	20-40	20-50	40-70	50-90	60-100	80-110	90-120
	Diameter	mm	40	45	53	68	75	85	100
Tool	Weight	kg	7	8	9	16	21	30	55
	Length	mm	400	500	580	700	750	850	1,000
Impact Rate	bpm	800-1100	700-1200	600-1100	500-900	400-800	400-800	350-700	350-650
Hydraulic Hose	inch	1/2	1/2	1/2	1/2	1/2	3/4	3/4	1
Suitable Excavator	ton	0.8~2.5	1.2~3	2.5~4.5	4~7	6~9	7~14	11~15	15-18



## Medium Duty Breaker >>

Model	Unit	TB1350S	TB1400S	TB1400LS	TB1400AS	TB1500S
Operating Weight	kg	1,497	1,756	1,855	1,776	1,960
	lbs	3,300	3,871	4,090	3,915	4,321
Operating Pressure	bar/psi	160-180	160-180	160-180	160-180	160-180
Setting Pressure	bar/psi	210	220	220	220	230
Required Oil Flow	l/min	100-150	120-180	120-180	120-180	130-190
	Diameter	mm	135	140	140	140
Tool	Weight	kg	127	134	134	170
	Length	mm	1,300	1,300	1,300	1,300
Impact Rate	bpm	350-600	350-500	350-500	350-500	300-450
Hydraulic Hose	inch	1	1	1	1	1 1/4
Suitable Excavator	ton	18 ~ 21	20 ~ 26	20 ~ 26	20 ~ 26	25 ~ 28



## Heavy Duty Breaker >>

Model	Unit	TB1550S	TB1650S	TB1700S	TB1750S	TB1900S	TB1950S	TB2000S
Operating Weight	kg	2,350	2,780	3,215	3,945	5,380	5,580	5,710
	lbs	5,180	6,128	7,087	8,697	11,860	12,300	12,588
Operating Pressure	bar/psi	160-180	160-180	160-190	160-190	240-260	260-280	260-280
Setting Pressure	bar/psi	230	230	230	230	280	280	280
Required Oil Flow	l/min	180-240	200-260	210-290	210-290	220-260	280-360	300-380
	Diameter	mm	155	165	175	175	190	195
Tool	Weight	kg	183	220	260	260	295	332
	Length	mm	1,500	1,600	1,600	1,600	1,700	1,700
Impact Rate	bpm	350-450	250-400	200-350	200-350	150-200	180-200	180-200
Hydraulic Hose	inch	1 1/4	1 1/4	1 1/4	1 1/4	1 1/4	1 1/4	1 1/4
Suitable Excavator	ton	28 ~ 35	30 ~ 40	40 ~ 55	40 ~ 55	45~55	50~65	55-65



Note:

- 1.The above specifications are subject to change without prior notice for the quality enhancement.
- 2.Color and bracket type are available by customer's request.
- 3.The operating weight with mounting cap, it is for reference only, the specific weight is subject to the actual excavator connection dimensions

## External Control Valve Type



Model	Unit	TB15G	TB20G	TB30G	TB40G	TB50G	
Operating Weight	D-Type	kg	1,210	1,720	2,260	2,920	3890
		lbs	2,667	3,351	4,982	6,437	8575
	T-Type	kg	1250	1775	2460	3,060	4160
		lbs	2755	3913	5423	6,746	9171
	S-Type	kg	1330	1797	2580	3,180	4200
		lbs	2932	3961	5688	7,010	9259
Operating Pressure	bar/psi	150-180	160-180	160-180	180-200	200-220	
Required Oil Flow	l/min	90-120	130-150	150-190	190-250	180-350	
Tool	Diameter	mm	120	135	150	160	180
	Weight	kg	90	125	165	200	270
	Length	mm	1,100	1,200	1,300	1,400	1500
Impact Rate	bpm	400-900	400-800	350-750	250-600	110-190	
Hydraulic Hose	inch	1	1	1	1 1/4	1 1/4	
Suitable Excavator	ton	15-18	15-18	27-35	35-45	35-50	

Note:

- 1.The above specifications are subject to change without prior notice for the quality enhancement.
- 2.Color and bracket type are available by customer's request.
- 3.The operating weight for T and S-Type with mounting cap, it is for reference only, the specific weight is subject to the actual excavator connection dimensions

## Skid Steer Loader (SSL)

Model	Unit	TB400SSL	TB450SSL	TB530SSL	TB680SSL	
Operating Weight	T-Type	kg	110	120	280	335
	S-Type	lbs	242	264	617	738
Operating Pressure	bar/psi	90-120	90-120	90-120	110-140	
	Setting Pressure	bar/psi	150	150	150	170
Required Oil Flow	l/min	15-30	20-40	20-50	40-70	
Tool	Diameter	mm	40	45	53	68
	Weight	kg	7	8	9	16
	Length	mm	400	500	580	700
Impact Rate	bpm	800-1100	700-1200	600-1100	500-900	
Hydraulic Hose	inch	1/2	1/2	1/2	1/2	
Suitable Excavator	ton	0.8~2.5	1.2~3	2.5~4.5	4 ~ 7	



### Applicable Excavator

Brand	Model	Operating Weight		Applicable Breaker
		kg	lbs	
CAT	226	2650	5849	TB450SSL
	232	2950	6514	
	236	2970	6567	
	242	3238	7138	
	246	3392	7478	
	262	3763	8296	
JOHN DEERE	272	4140	9133	TB530SSL
	316GR	2806	6180	
	318G	2970	6,542	
	320G	3246	7,150	
	324G	3496	7,700	
	330G	4495	9,900	
BOBCAT	332G	4540	10,000	TB530SSL
	S70	1311	2892	
	S450	2435	5370	
	S510	2816	6208	
	S590	3069	6765	
	S62	3123	6884	
	S64	3163	6974	
	S66	3245	7154	
	S650	3656	8061	
	S76	3908	8615	
	S770	4224	9314	
	S86	4413	9728	
NEW HOLLAND	L316	2430	5370	TB450SSL
	L318	2832	6230	
	L320	2930	6470	
	L321	3160	6970	
	L328	3580	7895	
	L334	4136	9100	
CASE	SR160	2560	5645	TB450SSL
	SR175	2842	6270	
	SR130	2300	5070	
	SR210	3160	6970	
	SR240	3350	7400	
	SR270	3681	8117	
	SV185	2980	6570	
	SV280	3630	8000	
SV340	4136	9100		



Note:

- 1.The above specifications are subject to change without prior notice for the quality enhancement.
- 2.Color and bracket type are available by customer's request.
- 3.The operating weight with mounting plate, it is for reference only, the specific weight is subject to the actual excavator connection dimensions.

# Backhoe Loader

Model	Unit	TB680BL	TB750BL	TB850BL
Operating Weight	kg	270	390	520
	lbs	595	860	1,146
Operating Pressure	bar/psi	110-140	120-150	130-160
Setting Pressure	bar/psi	170	180	190
Required Oil Flow	l/min	40-70	50-90	60-100
Tool	Diameter	68	75	85
	Weight	16	21	30
	Length	700	750	850
Impact Rate	bpm	500-900	400-800	400-800
Hydraulic Hose	inch	1/2	1/2	3/4
Suitable Excavator	ton	4 ~ 7	6 ~ 9	7~14

## Applicable Excavator

Brand	Model	Operating Weight		Applicable Breaker
		kg	lbs	
JCB	2DX	5,220	11,508	TB680BL
	3CX COMPACT	6,069	13,382	
	3CX	7,700-8,134	16,980-17,934	TB750BL
	3CX-14	7,343-8,575	16,190-18,906	
	3DX	7,660-8,185	16,887-18,044	
	3CX-15	8,373-9,200	18,460-20,294	
	4CX-14	8,010-9,242	17,660-20,376	TB750BL TB850BL
4CX-15	8,627-9,459	19,020-20,854		
CAT	4151L	8,000	17,637	TB750BL
	415	11,000	24,251	
	416	11,000	24,251	TB850BL
	420	11,000	24,251	
	420xe	11,000	24,251	
	430	11,000	24,251	
	440	13,300	29,321	
	450	13,300	29,321	
	428	11,000	24,251	
	432	11,000	24,251	
	434	11,500	25,353	
580SV	8,480	18,695	TB750BL	
580N EP	7,171	15,810		
580N	8,052	17,751		
580 Super N	8,649	19,067		
CASE	580 Super N WT	9,107	20,077	TB850BL
	590 Super N	9,309	20,532	
	310 G-Tier	6,308	13,907	TB680BL
John Deerer	310 P-Tier	6,904	15,221	TB750BL
	320 P-Tier	7,146	15,754	
	410 P	7,975	17,582	TB850BL
	710 P-Tier	11,698	25,790	
Bobcat	B760	7,900	17,416	TB750BL



# Post Driver



## Specifications

Model	Unit	TB530	TB680	TB750	TB850	
Operating Weight	kg	330	340	400	545	
	lbs	727	750	880	1,200	
Operating Pressure	bar/psi	90-120	110-140	120-150	130-160	
Setting Pressure	bar/psi	150	170	180	190	
Required Oil Flow	l/min	20-40	40-70	50-90	60-100	
Tool	Diameter	mm	203	203	228	254
		inch	8	8	9	10
Impact Rate	bpm	700-1200	500-900	400-800	400-800	
Hydraulic Hose	inch	1/2	1/2	1/2	3/4	
Suitable Excavator	ton	1.2~3	4 ~ 7	6 ~ 9	7~14	

### Note:

- 1.The above specifications are subject to change without prior notice for the quality enhancement.
- 2.Color and bracket type are available by customer's request.
- 3.The operating weight with mounting cap, it is for reference only, the specific weight is subject to the actual excavator connection dimensions.

# Quick Hitch

Quick hitches (also called quick couplers) are used with construction machines to allow the fast change of buckets and attachments on the machine. They remove the need to use hammers to manually drive out and insert the mounting pins for attachments.

### Product Advantage

- » Made by high strength manganese steel, with structural integration design and hard-wearing quality.
- » The operator's cabin is equipped with an electric switch which is convenient for the driver's operation. It replaces the high cost oil pressure by electric power.
- » Each oil cylinder is equipped with check valve and a mechanical locking safety device to ensure the oil flow, ensuring coupler to regular work when the oil circuit on or cut off.
- » Each quick hitch coupler have installed safety pin to protect system, also ensure normal operation when cylinder failure as "dual protect" function.
- » The quick hitch coupler can be manufactured in any execution and size you require.

### P-Type Quick Hitch Coupler »

#### Specifications

Model	Unit	TB-MINI	TB-02	TB-04	TB-06	TB-08	TB-10	TB-17
Overall Length	mm	300-450	500-540	580-610	750-780	920-960	960-1,100	1,100-1,300
Overall Height	mm	240	300	310	380	490	570	610
Overall Width	mm	150-210	220-280	270-280	350-450	450-480	540-570	600-680
Pin to Pin Distance	mm	80-180	230-270	290-350	370-420	460-480	470-540	520-630
Arm Width	mm	90-200	200-300	300-350	340-440	420-510	460-560	500-650
Pin Diameter	mm	25-45	40-45	45-55	50-70	80-90	90-100	100-110
Cylinder Stroke	mm	95-200	200-300	300-350	340-440	420-510	460-560	500-650
Pressure	kgf/cm <sup>2</sup>	40-380	40-380	40-380	40-380	40-380	40-380	40-380
Oil Flow	L/min	10-20	10-20	10-20	10-20	10-20	10-20	10-20
Carrier Weight	ton	1-4	4-7	6-8	9-19	17-23	23-30	30-40



### H-Type Quick Hitch Coupler »

#### Specifications

Model	Unit	TB-04	TB-06	TB-08	TB-10	TB-17	TB-20
Overall Length	mm	580-650	800-830	970-1,000	990-1,200	1,000-1,300	1,200-1,400
Overall Height	mm	310	388	492	570	558-610	680-780
Overall Width	mm	270-280	350-440	440-490	540-570	600-670	650-760
Pin to Pin Distance	mm	290-360	380-420	460-480	470-540	550-620	620-750
Arm Width	mm	180-200	230-320	300-350	370-420	410-470	420-520
Pin Diameter	mm	40-45	50-70	80-90	90-100	100-110	100-140
Cylinder Stroke	mm	300-350	340-440	420-510	460-560	600-650	640-700
Pressure	kgf/cm <sup>2</sup>	40-380	40-380	40-380	40-380	40-380	40-380
Oil Flow	L/min	10-20	10-20	10-20	10-20	10-20	10-20
Carrier Weight	ton	5-8	9-19	17-23	23-30	33-45	40-90



### Mechanical Quick Hitch Coupler »

#### Specifications

Model	Unit	TB-MINI	TB-02	TB-04	TB-06	TB-08
Pin Diameter	mm	20-40	40-45	45-60	60-70	70-80
Stroke Range	mm	90-160	220-320	220-350	350-450	420-550
Weight	kg	25-40	50-70	70-110	180-250	300-400
Carrier Weight	ton	1.5-3	4-6	6-9	12-16	17-23



- 1.The above specifications are subject to change without prior notice for the quality enhancement.
- 2.Color and bracket type are available by customer's request.

# Hydraulic Compactor

The hydraulic compactor is used in municipal construction projects—Abutment back, culvert side, corner turn, Road and railway subgrade, such as shoulder and slope protection tamping, embankment and its slope tamping, Building trench and fill earth compacted, concrete road repair, municipal side ditch, well and tube side, etc.

### Product Advantage

- » For machines from 1 to 30 tons.
- » Used for compacting channels and roadworks
- » For preparing a solid base for paving and other similar implementations.
- » Very useful as pile-drivers and for other uses, from roadworks to agricultural plantations.
- » The compactor can be manufactured in any execution and size you require.



#### Specifications

Model	Unit	TB-02	TB-04	TB-06	TB-08	TB-10
Impulse Force	ton	3	4	6.5	15	15
Maximum Vibration Frequency	rpm/min	2,000	2,000	2,000	2,000	2,000
Oil Flow	L/min	25-40	45-75	80-110	120-170	120-170
Working Pressure	bar	100-130	100-130	100-130	150-200	150-200
Bottom Measurement	mm	650*470*20	900*550*25	1160*700*28	1350*900*30	1350*900*30
Height	mm	600	760	920	1,060	1,100
Width	mm	410	550	700	900	900
Weight	kg	110	400	750	900-1,100	1,100-1,300
Carrier Weight	ton	2-3	4-9	10-16	17-23	23-30

- 1.The above specifications are subject to change without prior notice for the quality enhancement.
- 2.Color and bracket type are available by customer's request.

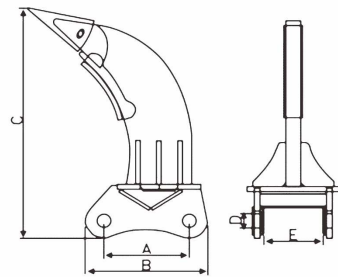


# Ripper

The ripper is an attachment that can be fitted to the arm of an excavating machine (usually an excavator or backhoe) and then used to break up hard ground and surfaces, as well as rocks and difficult areas that would not initially be broken up with an excavator bucket. Rippers are a cost effective attachment that are used a lot on construction sites that deal with demolition of structures, as well as preparing the ground for new framework. Rippers are also used a lot for landscaping projects as well as breaking tarmac and concrete.

### Product Advantage

- >> For machines from 4 to 90 tons.
- >> Made by high strength manganese steel, as high efficiency and durability, applicable to all kinds of tonnage excavator's assembly requirement.
- >> Suitable for loose and hard soil layer, frozen ground, soft rock, weathered rock etc.
- >> The ripper can be manufactured in any execution and size you require.



### Specifications

Model	Unit	TB-02	TB-04	TB-06	TB-08	TB-10	TB-17	TB-20
A	mm	267	312	392	468	522	590	665
B	mm	377	422	572	668	742	822	982
C	mm	392	952	1182	1262	1382	1552	1652
D	mm	40-50	50-55	60-70	70-80	80-90	90-110	100-130
E	mm	150-180	180-200	200-315	300-350	360-420	400-500	500-600
Plate Thickness	mm	50	55	65	80	90	90	120
Weight	kg	61	162	246	422	621	816	802
Carrier Weight	ton	4-7	5-8	9-19	17-23	23-30	33-45	45-90

1.The above specifications are subject to change without prior notice for the quality enhancement.  
2.Color and bracket type are available by customer's request.

# Hydraulic Shear

The hydraulic shear is suitable for various operations, including breaking the steel structure, scarp steel processing and other applications, cut iron material, steel, tank and tube etc, unique design and innovative ways to ensure the efficient operation and powerful cutting force, than ordinary hydraulic shear performance beyond 15%.

### Product Advantage

- >> All hydraulic shears series can quick and convenient to replace the blade, can reduce machine downtime and optimize productivity.
- >> Powerful hydraulic cylinders strengthened jaw mouth closing force, then can cut the most hardened steel.
- >> Hydraulic shears series are made from high wear resistant steel to ensure maximum strength of tool and the best wear resistance.
- >> 360° continuous hydraulic rotation, adjustable rotation speed.
- >> The hydraulic shear can be manufactured in any execution and size you require.

## Scrap Shear >>

### Specifications

Model	Unit	TB-08	TB-10
Weight	kg	2,086	3,397
Max. Opening	mm	480	610
End Sear Force	T	1,000	1,630
Middle Shear Force	T	1,780	2,790
Max. Shear Force	T	4,170	5,965
Blade Length	mm	480/550	620/690
Drive Oil Pressure	kg/cm <sup>2</sup>	320	380
Carrier Weight	T	20-28	30-42



## Hydraulic Shear >>

### Specifications

Model	Unit	Scrap Steel					Concrete				
		TB-04	TB-06	TB-08	TB-10	TB-14	TB-04	TB-06	TB-08	TB-10	TB-14
Dead-Weight	kg	620	1,413	2,200	2,977	4,052	620	1,345	2,164	3,060	4,052
Max. Opening	mm	335	540	500	660	801	540	650	950	1,100	1,200
Height	mm	1,521	2,050	2,380	2,600	2,700	1,419	1,888	2,374	2,480	2,700
Width	mm	864	1,175	1,370	1,600	1,700	884	1,175	1,360	1,540	1,700
The Active Length of Blade	mm	286	348	486	578	736					
Rotation Mode		360° Ball Colliding Rotation	360° Hydraulic Rotation			360° Ball Colliding Rotation	360° Hydraulic Rotation				
Presssure	bar	235	300	320	320	320	235	300	320	320	320
Root Crushing Force	ton	81*2	138*2	171*2	330*2	387*2	81*2	120*2	168*2	238*2	375*2
Middle Crushing Force	ton	50*2	80*2	102*2	189*2	218*2	44.5*2	66*2	78*2	125*2	174*2
Fore-end Crushing Force	ton	32*2	53*2	75*2	127*2	147*2	25*2	40*2	56*2	90*2	118*2
Carrier Weight	ton	5-8	15-18	20-25	28-35	38-50	5-8	15-18	20-25	28-35	38-50

1.The above specifications are subject to change without prior notice for the quality enhancement.  
2.Color and bracket type are available by customer's request.

# Hydraulic Grapple

The hydraulic grapples are suitable for loading and unloading operations such as large scrap, steel structure, and heavy scrap steel.

### Product Advantage

- >> 360-degree hydraulic rotation provides a more flexible gripping effect.
- >> The oil cylinder has a built-in balance valve, which runs smoothly, maintains clamping force, and has higher safety.
- >> The motor is equipped with a two-way overflow valve and a two-way balance valve to prevent the motor from being damaged by inertial impact after rotation.
- >> The fuselage structure adopts high toughness manganese steel, which solves the trouble of easy deformation of the fuselage during work.
- >> 3+2, 4+3, 5+4 fingers for your option.

## Hydraulic Rotating Wood Grapple >>

### Specifications

Model	Unit	TB-02	TB-04	TB-06	TB-08	TB-10	TB-17
Max Jaw Opening	mm	1,300	1,400	1,800	2,300	2,500	2,500
Oil Pressure	kg/cm <sup>2</sup>	110-140	120-160	150-170	160-180	160-180	180-200
Oil Flow	lpm	30-55	50-100	90-110	100-140	130-170	200-250
Setting Pressure	kg/cm <sup>2</sup>	170	180	190	200	210	250
Weight	kg	310	360	720	1330	1650	1900
Carrier Weight	ton	4-6	6-11	12-16	17-23	24-30	31-40



## Hydraulic Rotating Stone/Steel Grapple >>

### Specifications

Model	Unit	TB-02	TB-04	TB-06	TB-08	TB-10	TB-17
Max Jaw Opening	mm	1,300	1,400	1,800	2,300	2,500	2,500
Oil Pressure	kg/cm <sup>2</sup>	110-140	120-160	150-170	160-180	160-180	180-200
Oil Flow	lpm	30-55	50-100	90-110	100-140	130-170	200-250
Setting Pressure	kg/cm <sup>2</sup>	170	180	190	200	210	250
Weight	kg	320	390	740	1,380	1,700	1,900
Carrier Weight	ton	4-6	6-11	12-16	17-23	24-30	31-40



## Holding Grapple >>

### Specifications

Model	Unit	TB-MINI	TB-MINI	TB-02	TB-04	TB-06	TB-06	TB-08
Max Jaw Opening	mm	930	1,299	1,370	1,520	1,880	1,900	2,530
Oil Pressure	kg/cm <sup>2</sup>	100-130	100-130	110-140	120-160	150-170	150-170	160-180
Weight	kg	85	190	290	380	420	540	860
Carrier Weight	ton	1.5	3-4	5	8-10	11-13	14-16	20-26



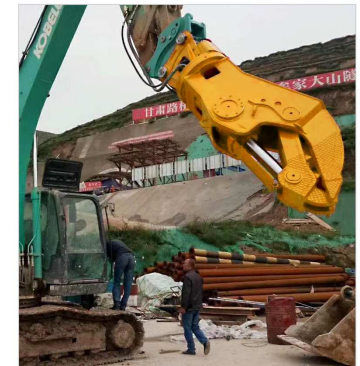
- 1.The above specifications are subject to change without prior notice for the quality enhancement.
- 2.Color and bracket type are available by customer's request.

# Hydraulic Pulverizer

The hydraulic pulverizer is used for secondary crushing of steel and concrete and separation of steel and concrete.

### Product Advantage

- >> For machines from 6 to 30 tons.
- >> Unique layout design of the jaw teeth, double layer wear resistance protection, imported HARDOX400 sheet material as raw material.
- >> The structure is optimized through load design to balance the opening size and crushing force.
- >> The hydraulic pulverizer can be manufactured in any execution and size you require.



### Specifications

Model	Unit	TB-04	TB-06	TB-08	TB-10
Max Jaw Opening	mm	577	730	900	1,015
Length	mm	1,720	2,000	2,150	2,374
Width	mm	658	660	706	860
Max Crushing Force	T	83	105	165	225
Max Shear Force	T	126	165	210	305
Blade Length	mm	120	150	180	200
Driving Oil Pressure	kg/cm <sup>2</sup>	230	300	320	380
Setting Pressure	kg/cm <sup>2</sup>	170	180	190	200
Weight	kg	660	1,350	1,750	2,750
Carrier Weight	ton	6-12	12-18	18-26	26-30

- 1.The above specifications are subject to change without prior notice for the quality enhancement.
- 2.Color and bracket type are available by customer's request.

# Orange Peel Grapple

The orange peel grapple is suitable for loading and unloading of granular bulk materials.

### Product Advantage

- >> High wear resistant steel as raw material, light in weight and excellent in wear resistance.
- >> Among the same products, it has the largest grabbing force and widest grabbing distance.
- >> It has built-in cylinder and high-pressure hose, and the oil circuit is completely closed, protecting the hose and prolonging the service life.
- >> The cylinder is equipped with an anti-fouling ring, which can effectively prevent the tiny impurity in the hydraulic oil from damaging the seals.
- >> The orange peel grapple can be manufactured in any execution and size you require.



### Specifications

Model	Unit	TB-04F	TB-04S	TB-06F	TB-06R	TB-06S	TB-08F	TB-08R	TB-08S	TB-08SS	TB-08SR
Carrier Weight	ton	6-8	6-8	9-16	9-16	9-16	18-30	18-30	18-30	18-30	18-30
No. of Jaw	piece	4/5	4/5	4/5	4/5	4/5	4/5	4/5	4/5	4/5	4/5
Weight	kg	350/420	385/450	750/850	900/1,000	820/920	1550/1,750	1,700/1,900	1,700/1,900	1,700/1,900	1,800/2,000
Height	mm	1,125	1,435	1,550	1,650	1,800	1,849	1,980	2,070	1,990	2,370
Width	mm	1,000	1,000	1,260	1,260	1,260	1,260	1,550	1,550	1,550	1,550
Opening	mm	1,200	1,200	1,600	1,600	1,600	1,600	2,050	2,050	2,050	2,050
Driving Pressure	bar	180	180	250	250	250	250	280	280	280	280
Driving Flow	lpm	100	100	160	160	160	160	220	220	220	220
Capacity	m <sup>3</sup>	0.3/0.2	0.3	0.6	0.6	0.6	0.8	0.8	0.8	0.8	0.8

Note: F:Fixed, R:Rotation, S:Swing, SS:Single-axis swing rotation, SR:Cross swing rotation

- 1.The above specifications are subject to change without prior notice for the quality enhancement.
- 2.Color and bracket type are available by customer's request.

# Multi Grabs

Multi Grabs are designed for fast, productive material handling. Capable of high-volume, production loading and precise sorting, they enhance the productivity and efficiency of your operation. The grabs can handle anything from primary and secondary demolition to recycling to get the job done.

### Product Advantage

- >> 360 degree hydraulic rotation to provide more flexible grasping effect.
- >> With double motor rotation and larger torque.
- >> The edge of grab bucket is made of imported HARDOX400 sheet, which has a longer service life.
- >> The built-in balance valve of the oil cylinder keeps the clamping force and is more secure.
- >> The oil cylinder and control connecting rod are built in, and the shell provides protection to keep the grabbing synchronization.



### Specifications

Model	Unit	TB-03	TB-06	TB-08	TB-15	TB-20	TB-30
Jaw Width	mm	300	450	550	850	950	1,250
Max Opening	mm	675	1,000	1,400	1,800	2,050	2,200
Max Rotational Flow	L/min	20	25	25	40	40	50
Rotational Pressure	Mpa	10	18	18	18	18	18
Max Working Flow	L/min	20	40	50	100	120	160
Working Pressure	Mpa	20	25	25	25	25	25
Weight	kg	140	340	460	930	450	2,080
Carrier Weight	ton	1-3	3-5	6-8	10-18	16-23	25-40

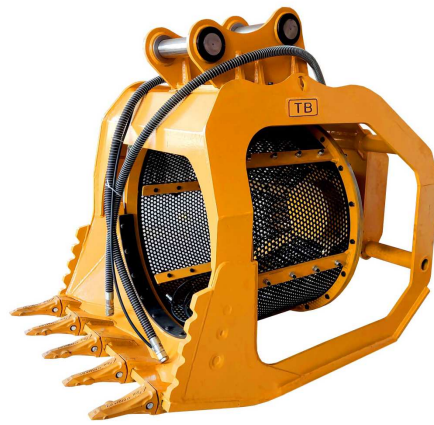
- 1.The above specifications are subject to change without prior notice for the quality enhancement.
- 2.Color and bracket type are available by customer's request.

# Screening Bucket

Screening buckets are used for the primary selection, screening and separation of natural materials, both before and after the crushing phase. It is a perfect attachment for salvaging aggregates on construction and building renovation sites.

### Product Advantage

- » Screen size can be customized according to requirements and working condition.
- » It can work with excavators, skid loaders, loaders and backhoe loaders from 2 to 36 tons.
- » Blades and interior protection of the bucket are made of highly wear-resistant steel and the main structure of the product is strengthened.
- » All buckets main material is wear-resistant plate, high screening efficiency, long service life.



### Specifications

Model	Unit	TB02	TB08	TB12	TB16	TB18
Carrier Weight	ton	2-4	6-10	12-17	18-23	25-36
Rotary Screen Diameter	mm	610	810	1,000	1,350	1,500
Rotating Speed	r/min	60	65	65	65	65
Working Pressure	bar	150	220	230	250	250
Oil Flow	L/min	30	60	80	110	110
Weight	kg	175	630	1,020	1,920	2,430

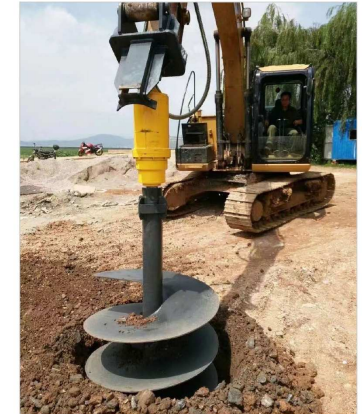
1. The above specifications are subject to change without prior notice for the quality enhancement.  
2. Color and bracket type are available by customer's request.

# Earth Drill

The earth drill is used for excavating tree pits during afforestation, and the electric poles on both sides of the road are used for digging pits, etc., with high working efficiency and convenient use.

### Product Advantage

- » For machines from 1.5 to 40 tons.
- » Comes with extra hard forged hood ears to cope with heavy strains.
- » Most reliable top-quality hydraulic motors available.
- » Durable and reliable.



### Specifications

Model	Unit	TB2000	TB4000	TB5500	TB6000	TB7000	TB8000	TB9000	TB10000	TB12000	TB15000	TB20000	TB25000	TB30000	TB40000
Carrier Weight	ton	1.5-4	2.5-4.5	4-7	4-7	4.5-7	5-8	3-7	3-10	10-15	13-17	15-20	17-30	17-30	17-30
Max Torque	N·m	2,510	4,320	5,600	5,960	7,300	8,250	8,760	10,260	12,300	15,160	19,200	24,920	31,500	39,500
Working Pressure	bar	80-170	80-170	100-190	100-190	100-200	100-200	80-170	80-170	100-210	100-210	150-230	150-230	100-170	100-170
Rated Oil Flow	lpm	40-75	40-75	60-95	60-95	60-95	60-110	40-75	40-75	80-120	80-120	100-150	100-150	100-150	100-150
Speed Range	rpm	32-65	30-52	40-60	40-60	34-56	28-50	15-30	12-26	22-40	20-33	20-27	15-22	13-17	14-18
Size	mm	φ 200*585	φ 200*585	φ 270*900	φ 270*900	φ 270*900	φ 270*900	φ 270*870	φ 270*870	φ 290*945	φ 300*945	φ 345*1,115	φ 345*1,115	φ 450*1,300	φ 450*1,300
Output Shaft	mm	65 round	65 round	75 Square	75 Square	75 Square	75 Square	75 Square	75 Square	75 Square	75 Square	95 Square	95 Square	110 Square	110 Square
Weight	kg	55	60	112	127	130	135	122	125	177	180	266	272	485	490

1. The above specifications are subject to change without prior notice for the quality enhancement.  
2. Color and bracket type are available by customer's request.