



# CORPORATE PROFILE

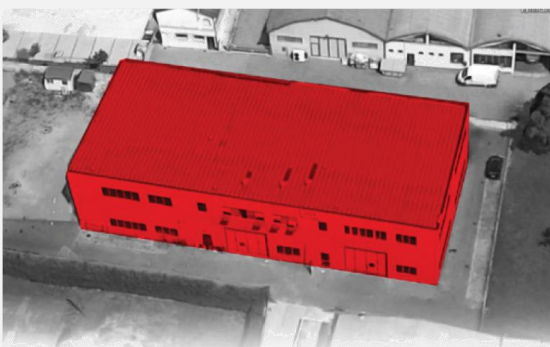
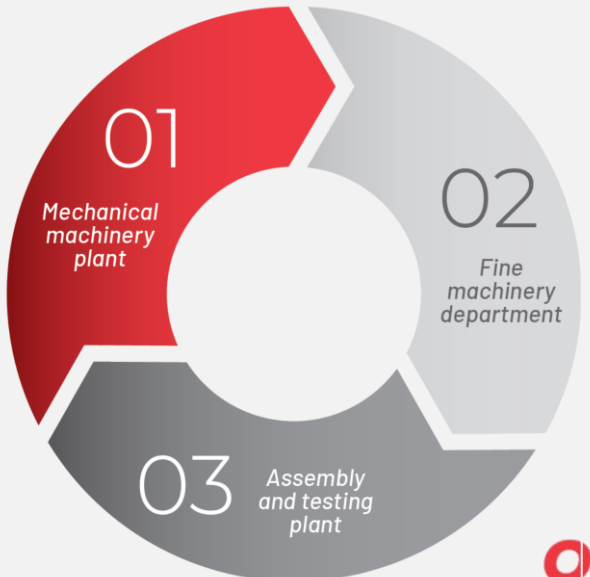
CORPORATE PRESENTATION  
**THE GROUP**



ANNIVERSARY  
2004-2024



**01** - Mechanical Machinery plant  
(2.500 m<sup>2</sup>)



**02** - Finishing department  
(2.000m<sup>2</sup>)



**03** - Assembly & Testing plant  
( 2.000 m<sup>2</sup>)

**OLEOWEB HEADQUARTERS**



Over 6.000 square meters of production area

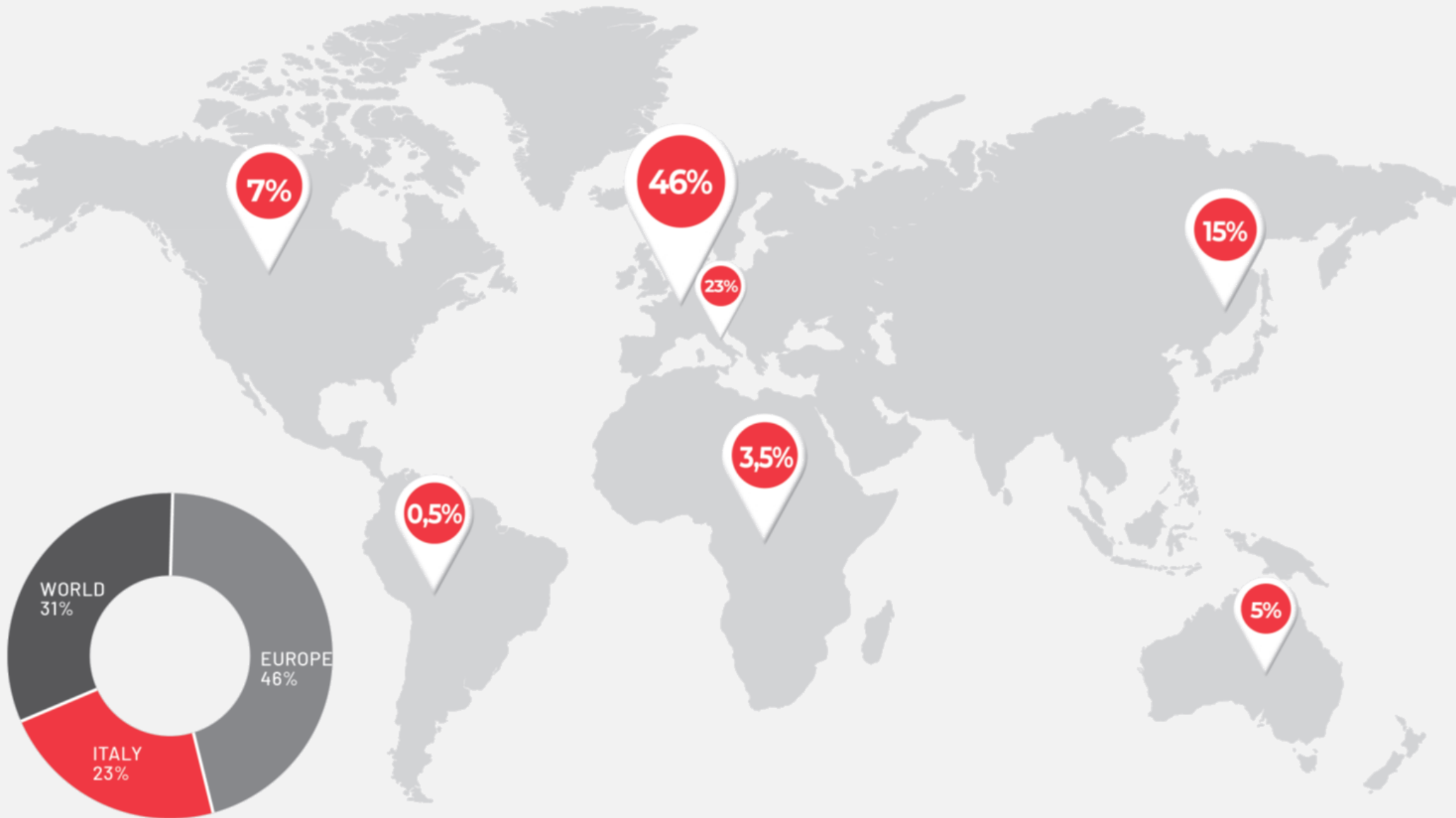




ANNIVERSARY  
2004-2024



**OLEOWEB**  
Valves and solutions



CORPORATE PRESENTATION  
ITALIAN RESELLERS



ANNIVERSARY  
2004-2024



# EUROPEAN RESELLERS



ANNIVERSARY  
2004-2024



# OLEOWEB

Valves and solutions



# WORLDWIDE RESELLERS



ANNIVERSARY  
2004-2024

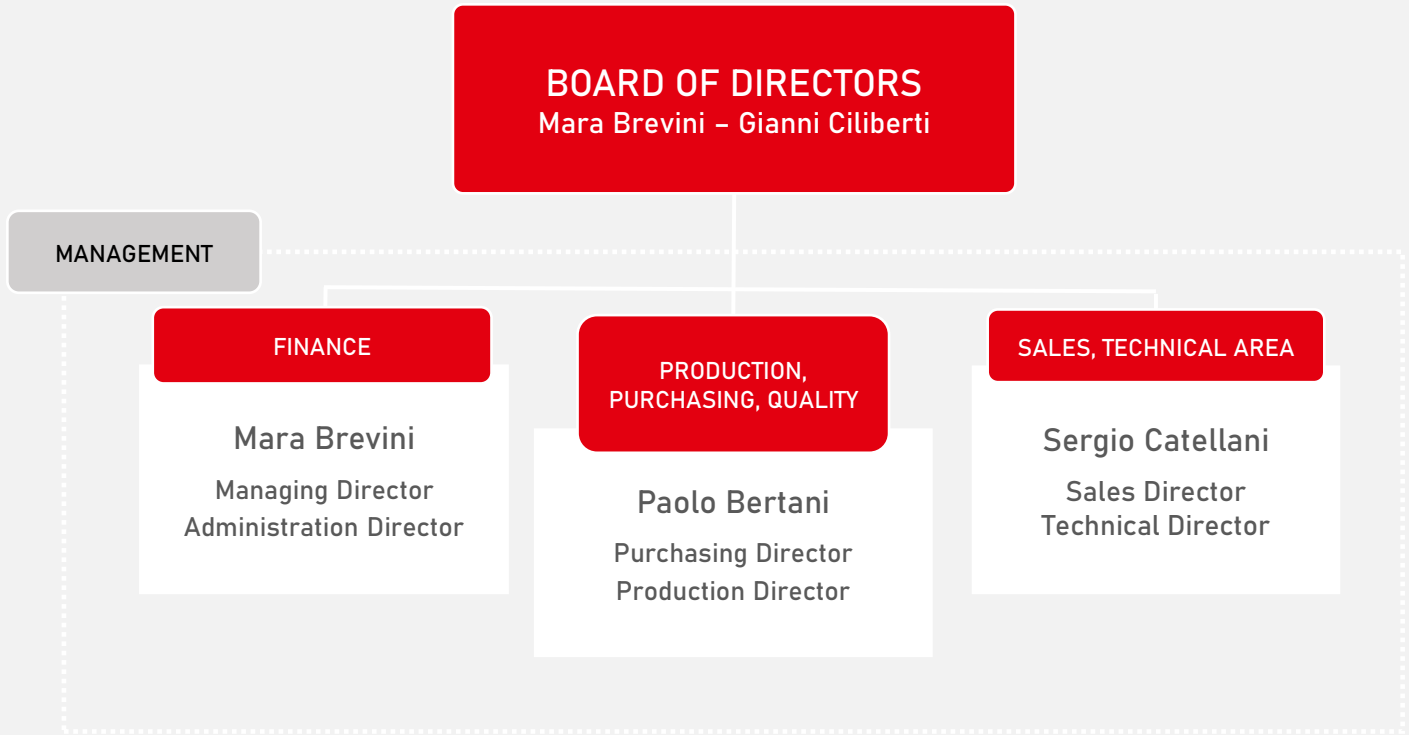




ANNIVERSARY  
2004-2024

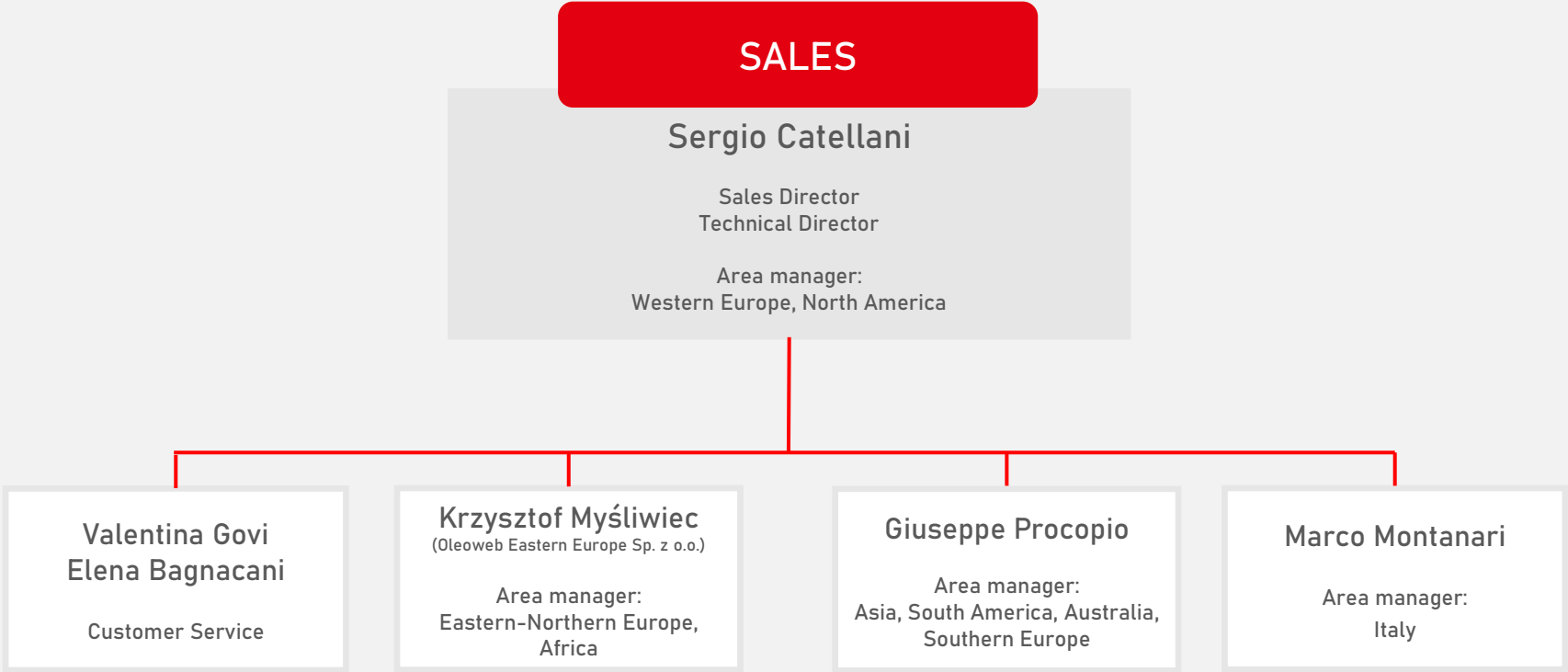


## Oleoweb srl management





## SALES DEPARTMENT structure







ANNIVERSARY  
2004-2024



May 13-17 IFAT Munich (Germany)



November 26-29 BAUMA Shanghai (China)



November 6-10 EIMA Bologna (Italy)





ANNIVERSARY  
2004-2024

### Production increase



Semi-automatic test bench

- *OLEO-BI*



3 x Swiss lathe turning machines

- *CITIZEN L12X*
- *CITIZEN A20 VII*
- *MIYANO B42XII*



MCM multipallet

- *CLOCK EVO 800*

### Company organization improvement



New ERP system

- *J-GALILEO SAN*
- *MARCO INFORMATICA*

### R&D support



Digital data recording system

- *PARKER SCM-600*



Truck mounted crane  
Application test tool

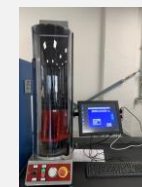
- *"ING. BONFIGLIOLI"*



Projects file manager

- *SOLIDWORKS PDM PROFESSIONAL*

### Quality DPT equipment



Springs' tester load cell

- *EASIDUR "DYNO"*



Altimeter

- *DIGIMAR 816CL*



Measuring station

- *JENOPTIC OPTICLINE CS305*



Bridge Coordinate Measuring Machines

- *ZEISS SPECTRUM 10/16*



**Valvole a inserto**  
*Insert valves*



**Valvole in linea**  
*In-line valves*



**Valvole di bilanciamento**  
*Counterbalance valves*



**Valvole a cartuccia**  
*Cartridge valves*



**Basi e blocchi**  
*Hydraulic Manifolds*



**Componenti e accessori**  
*Hydraulic Components*



**Valvole elettriche**  
*Solenoid valves*



**Pompe e deviatori**  
*Hand Pumps and flow diverters*



THANK YOU FOR YOUR  
ATTENTION