



福建省著名商标



福建省名牌产品



ISO 9001:2015
ISO 14001:2015
OHSAS 18001:2007
CN-00207Q12070ROM

泉州市盛德机械发展有限公司

Quanzhou Shengde Machinery Development Co.,Ltd.

地址:中国福建省泉州江南高新技术信息产业园泰康路79号 邮编(P.C.):362000

ADD: No.79, Taikang Road, Jiangnan High-tech Information Industrial Park, Quanzhou, Fujian, China.

Http:www.cnqzshengde.com E-mail:shengde@cnqzshengde.com

国际贸易部/INTERNATIONAL TRADING DEPT

TEL:86-595-68296522 FAX:86-595-68296522

国内贸易部/DOMESTIC TRADING DEPT

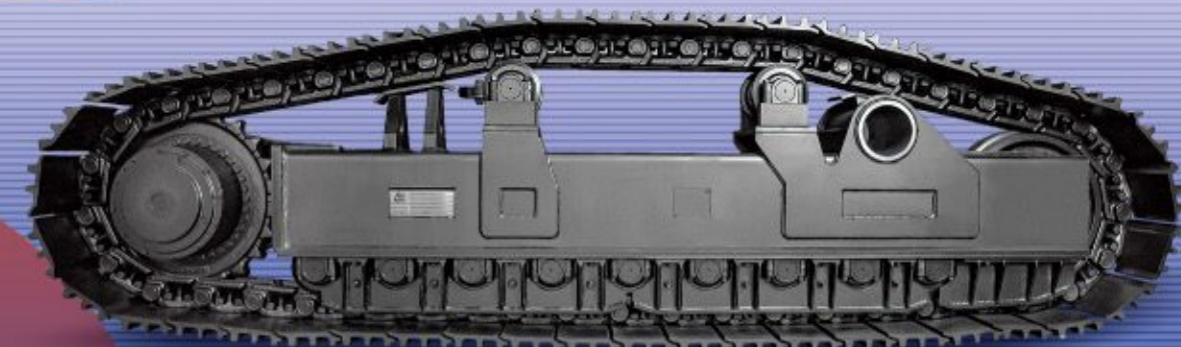
TEL:0595-22450505 22451159 22425555



E-mail:hyjiang28@aliyun.com



www.cnqzshengde.com

HENGLIDA 泉州恒利达标识·力达品牌设计 TEL:13599221798



三一重机  · 中联重科  合作供应商

Cooperative Supplier of Sany Heavy Machinery and Zoomlion Heavy Industry

Track Machinery Undercarriage Parts Expert

履带式底盘件专家 ■ 始创于1999年



Recognition Is The Beginning,
There Is No Limit To Exceed Ourselves!
We Are Struggling,
We Will Be Better!



Enterprise Profile

SHENGDE MACHINERY DEVELOPMENT CO.,LTD. QZ.CN is located in Quanzhou city, a well-known hometown of overseas Chinese in southern Fujian. Since its foundation in 1999, it grows to be a modernized enterprise incorporating industry and trade.

For the last 20 plus years, SHENGDE MACHINERY has always been dedicated to researching and manufacturing different kinds of construction machinery undercarriage parts, the main products are: Track roller, Carrier roller, Sprocket, Idler Assy, Track chain and Track Frame of various kinds of excavators and bulldozers. The professional design team can design and manufacture various non-standard track frame, according to the different needs of customers, including power systems and hydraulic control systems.

Our products enjoy a good reputation among the OEM customers and end users for its quality and elaborate appearance. They are sold extremely well all around China and countries in Europe, America, the Middle East and southeast Asia etc. The annual output value is up to 20million.

SHENGDE has 200 sets of various size machines for accurate processing, such as 1,600/1000 ton forging and stamping machine, CNC floor boring, CNC gantry milling, CNC large-scale bending machine, imported machining center, CNC lathes, heat treatment intermediate frequency machine, semi-automatic assembly line, spray painting line and so on. Be provided with advanced manufacture technical and testing equipments. Has more than 300 employees, among of them, there are 8 technological engineers and 2 assistant engineers. Our annual sales volume: domestic OEMs supporting occupy 50%, domestic market retail occupy 20%, and international market sale occupy 30%. The track frames and undercarriage parts we produced for excavator, bulldozer and other track machinery, are apply to various models of the well-known domestic and international brand machines.

internal management, strictly manufacture according to the 6S standard. Furthermore, it has passed the authentications of ISO 9001:2015 quality management system, the ISO 14001:2015 environment management system, and OHSAS 18001:2007 Occupational Health and Safety Certification, the ERP management system is fully implemented. Over the years, the company has repeatedly been awarded the honorary titles of "Provincial Famous Brand", "Provincial Famous Brand Product", "Key Enterprise", "Star Enterprise" and "Integrity Enterprise" by government departments.

"SHENGDE"-will always be your trusted partner! We will continue to uphold the business purpose of "quality is life, reputation is fundamental", and provide customers with high-quality and low-cost products and the best service. Chairman Mr. Jiang Huoyan and all his staff warmly welcome customers from home and abroad to visit and negotiate business, to create a brilliant tomorrow hand in hand!



企业简介

泉州市盛德机械发展有限公司位于闽南著名的侨乡——福建省泉州市，企业创建于1999年，是一家集工贸为一体的现代化企业。

二十多年来，公司一直致力于工程机械底盘的开发和制造，以底盘架和“四轮一带”为主导的产品系列。专业设计团队可根据客户不同需求设计及制造各种非标规格履带底盘总成，包括动力系统、液压控制系统。

以其内在的质量和精良外观，博得主机厂商及终端用户的一致好评。产品畅销全国各地，出口欧洲、美洲、非洲、中东及东南亚等30多个国家，年产值2亿。

公司拥有1600吨、1000吨精压机、数控落地镗、数控龙门铣、数控大型折弯机、进口加工中心、数控车床、热处理中频机、半自动装配流水线、喷漆流水线等200台大、中、小型精密加工设备；具备先进的制造工艺技术和检测设备。员工300多人，其中技术工程师8人，助理工程师2人。年销售量国内主机厂配套占50%、国外市场销售占30%。国内市场零售占20%、所生产的挖掘机、推土机等履带式机械的底盘总成及四轮一带易损配件适用于国内外知名品牌的各种履带式机型。

公司注重强化企业内部管理，严格按照6S标准组织生产，并通过了ISO 9001:2015质量管理体系、ISO 14001:2015环境管理体系和OHSAS 18001:2007职业健康安全认证，全面启用了ERP管理系统。多年来，公司屡次获得政府部门授予为“省著名商标”、“省名牌产品”、“重点企业”、“星级企业”、“诚信企业”等荣誉称号。

“盛德”——盛于品质，德赢天下！我们将继续秉承“质量为生命、信誉为根本”的经营宗旨，竭诚为您提物超所值的产品以及最优质的服务，董事长蒋火炎先生及其全体员工热忱欢迎广大海内外客商光临指导、洽谈业务，携手共创辉煌的明天！

可为主机制造厂 (OEM) 提供专门设计应用于工程机械、矿山机械、推土机、林业机械、筑路机械和农用机械行业中的主机配套的四轮一带方案。最大性能的可靠性, 由全面彻底的试验分析和实地试验保证。完善的售前和售后服务体系。

We can provide specially designed of undercarriage parts which is used in engineering machinery, mining machinery, bulldozer, forestry machinery, road construction machinery and agricultural machinery industry For the OEM. Maximum performance reliability tested by a thorough anlysis and field trials to ensure. Perfect pre and after -sales service system.



CARRIER ROLLER 托链轮



TRACK ROLLER 支重轮



COMPLETE UNDERCARRIAGES 底盘支架



HYDRAULIC MOTOR 马达



TRACK SHOE, TRACK BOLT&NUT 履带板、履带板螺丝



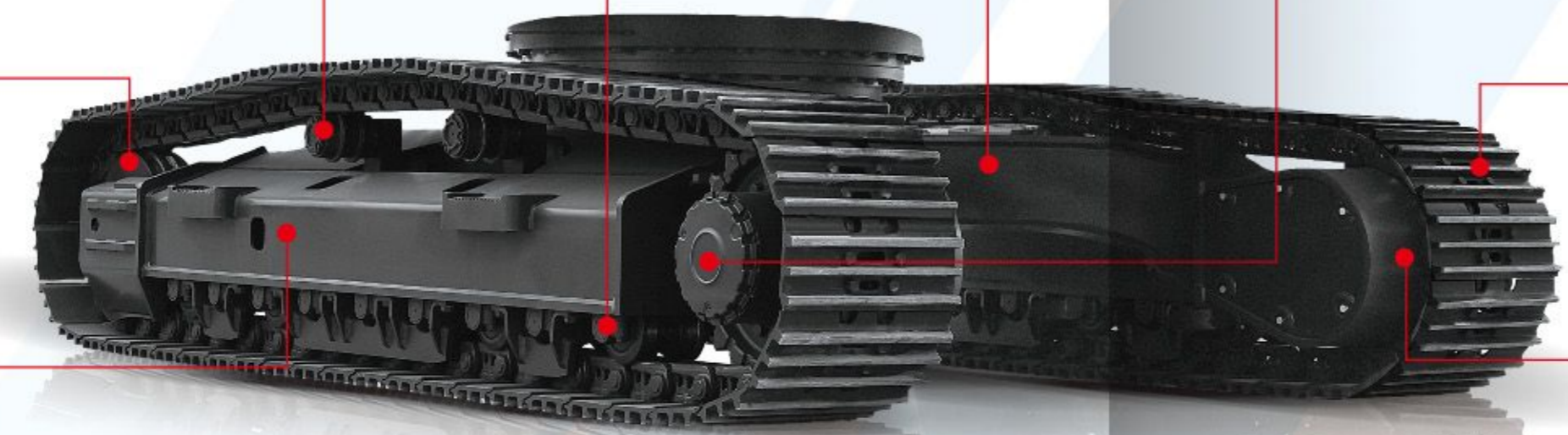
EXCAVATOR 履带式挖掘机



TRENCHLESS DRILLING RIG 非开挖钻机



IDLER 引导轮



TRACK CHAIN ASSY 履带总成



BULLDOZER 履带式推土机



MOBILE CRUSHER 移动式筛分机



TRACK CYLINDER ASSEMBLY 涨紧总成



SPROCKET 驱动轮



CRAWLER DRILL 履带式钻孔机



CRAWLER CRANE 履带式吊机



锻造 FORGING workshop
 地址:中国福建省泉州江南高新技术信息产业园
 ADD.No.79,Taikang Road,Jiangnan High-tech Information
 Http:www.cnqzshengde.com E-mail:shengde@cnqzshengde.com
 国际贸易部/INTERNATIONAL TRADING DEPT
 TEL:86-595-68296522 FAX:86-595-68296522
 国内贸易部/DOMESTIC TRADING DEPT
 TEL:0595-22450505 22451159 22425555
 E-mail:hyjiang28@aliyun.com



铸造 CASTING workshop



热处理 HEAT Treatment



数控加工 CNC Machining

底盘总成工艺流程图 >>

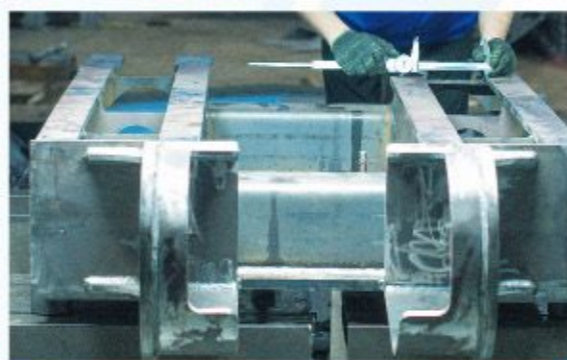
TRACK FRAME WORKING PROCESS CHART



下料 Material Arranged



折弯 Bend



焊接 Welding



机加工 Machining



喷漆 Spray Painting



装配 Assembly



荣誉证书 HONORARY CERTIFICATE



72节距

横梁式整体底盘

72 Pitch Cross Beams Frame

72节距横梁式整体底盘性能参数

外形尺寸	2600x1550x655/mm
中心距	2190mm
轨距	1270mm
板宽	280mm
橡胶靴	选配
马达减速机	选配
工作重量	6T
适配主机	挖机、类挖机特种机械等

135节距

摆动式整体底盘

135 Pitch Oscillate Frame

135节距摆动式整体底盘性能参数

外形尺寸	2601.5x506.5x746.5/mm
中心距	1957mm
板宽	300mm
橡胶靴	选配
马达减速机	选配
工作重量	6T-8T
适配主机	凿岩机、潜孔钻机等

135节距

横梁式整体底盘

135 Pitch Cross Beams Frame

135节距横梁式整体底盘性能参数

外形尺寸	2313.7x1000x570.6/mm
中心距	1755mm
轨距	700mm
板宽	300mm
橡胶靴	选配
马达减速机	选配
工作重量	6T-8T
适配主机	煤矿巷道机械

140节距

横梁式整体底盘

140 Pitch Cross Beams Frame

140节距横梁式整体底盘性能参数

外形尺寸	3072.19x2260x607.7/mm
中心距	2489mm
轨距	1860mm
板宽	400mm
橡胶靴	选配
马达减速机	选配
工作重量	10T-16T
适配主机	水平定向钻机、水井钻机等

203节距

X型架整体底盘

203 Pitch X-Frame

203节距X型架整体底盘性能参数

外形尺寸	4751.9x3200x1040/mm
中心距	3820mm
轨距	2600mm
板宽	600mm
橡胶靴	选配
马达减速机	选配
工作重量	25.5T
适配主机	挖机、类挖机特种机械等



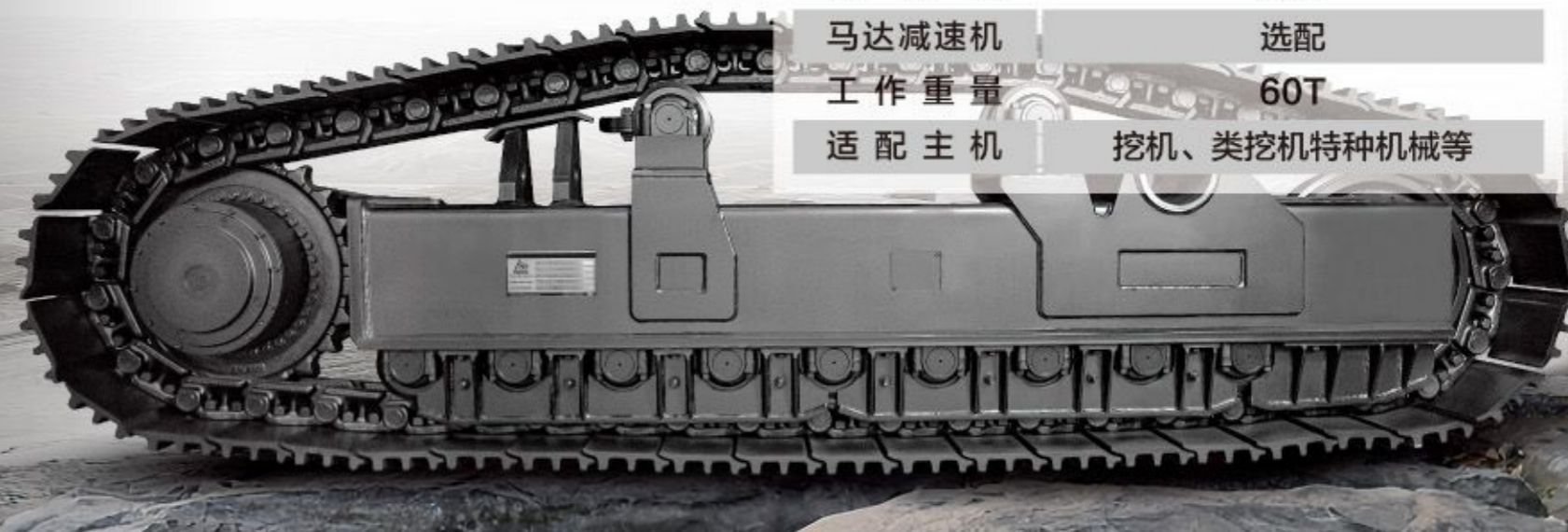
216节距

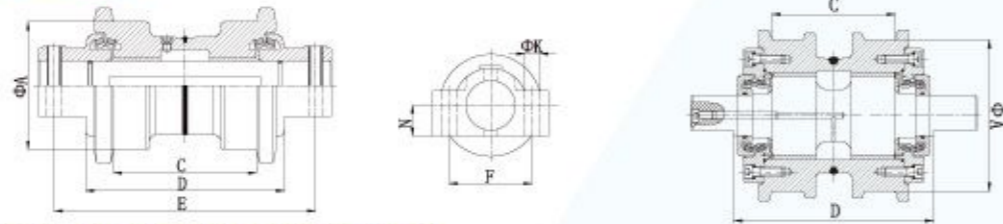
摆动式整体底盘

216 Pitch Oscillate Frame

216节距边梁底盘总成性能参数

外形尺寸	4584x800x1280/mm
中心距	3600mm
轨距	2935mm
板宽	800mm
橡胶靴	选配
马达减速机	选配
工作重量	60T
适配主机	挖机、类挖机特种机械等

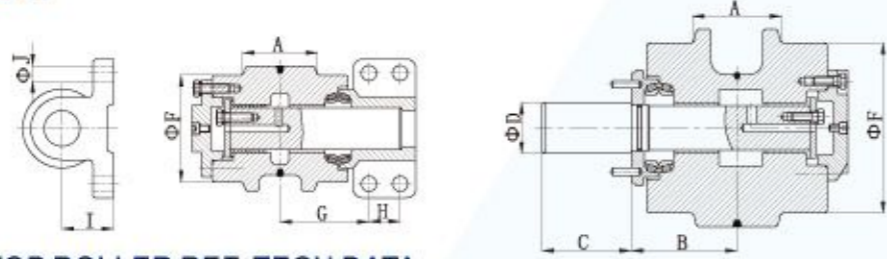




支重轮的参考技术参数 ROLLER REF. TECH DATA

NO.	MODEL	A	C	D	E	F	N	K	MEMO
01	EX100	130	148	213	250	/	/	17	
02	EX200-1	160	174	242	317.5	/	/	18	
03	EX200-5	160	172	242	/	102	/	19	
04	ZX200	160	169	242	290	/	38	19	
05	EX400	200	210	/	400	125	50	23	
06	E120B(E312)	136	148	/	266	/	32	18	
07	CAT320	155	173	244	296	/	38	21	
08	SK200-3	160	173	230	310	110	26.5	19.5	
09	SK300	180	203	279	358	/	/	23.5	
10	SK320	175	210	280	350	/	42	23.5	
11	PC100-3	130	123	184.5	/	/	15	18	
12	PC200-5	160	173	240	310	/	36	20	
13	PC400-5	200	210	292	/	/	50	24	
14	R290	180	199	256	330.2	/	45	22	
15	DH280-3	168	/	272	/	114.3	43	22	
16	D4D	203	/	/	298.4	89	13	17	
17	D4H	175	143	231	/	/	/	/	
18	D5H	197	172	250.3	/	/	/	/	
19	D6H	210	189.5	263.5	/	/	/	/	
20	D6D	210	189	255	330.5	/	/	20.5	
21	D7G	222	205	288	368.3	/	/	23	
22	D85	222	208	/	380	/	15.5	23.5	
23	BD2	140	/	/	208	60	/	13	
24	VA380	135	112	/	210	80	25.5	15	
25	VA576	126	/	127	/	70	17	13	
26	PCR100	146	/	146	196	/	19	13	

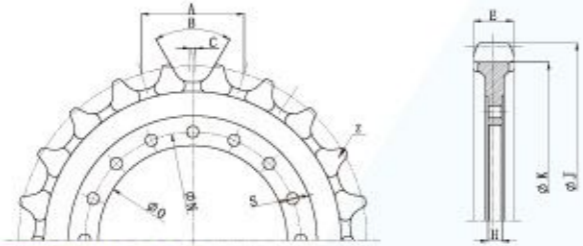




托链轮的参考技术参数 TOP ROLLER REF. TECH DATA

NO.	MODEL	A	B	C	D	F	G	H	I	J	MEMO
01	EX200-1	84	/	/	/	150	97.5	35	57.5	4-Ø17	
02	EX200-5	84	/	/	/	120	96	35	57.5	4-Ø17	
03	ZX200	84	/	/	/	120	95.5	35	53.5	4-Ø17	
04	EX400	103	/	/	/	160	117.5	65	91	4-Ø19	
05	E120B	72	90	63	41	112	/	/	/	/	
06	CAT320	84	108	70	47	120	/	/	/	/	
07	E325	97	113.5	75	47	160	/	/	/	/	
08	E330	97	113.5	75	47	160	/	/	/	/	
09	PC100-5	/	/	/	/	115	81.5	41	71	4-Ø14	
10	PC200-5	84	119.5	70	55	140	/	/	/	/	
11	PC300-5	96	116	90	58	168	/	/	/	/	
12	PC400-5	106	116	90	58	168	/	/	/	/	
13	SK200-3	84	87	70	46	120	/	/	/	/	
14	SK300	95	129.5	70	65	120	/	/	/	/	
15	SK320-6	95	128	70	66	160	/	/	/	/	
16	R290	96	132.5	85.5	58	168	/	/	/	/	
17	DH280-3	85	/	/	/	142	131	50	111	4-Ø18	
18	D4D	70	91	88	41.5	151	/	/	/	/	
19	D5H	86	115.8	110.7	57.2	172	/	/	/	/	
21	D60/D65	100	105	96	61	185	/	/	/	/	
22	D61	82	98	92.8	61	165	/	/	/	/	
23	D6D	94	116	87.5	47.7	188	/	/	/	/	
20	D6H	94	115.5	110	57.15	188	/	/	/	/	
24	D7G	98	118.5	100	57	191	/	/	/	/	
25	D85	98	119	120	58	185	/	/	/	/	
26	D155	120	137	139	68	194	/	/	/	/	

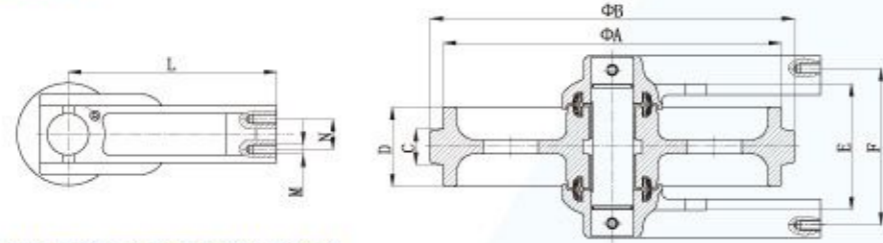




齿圈的参考技术参数 SPROCKET REF. TECH DATA

NO.	MODEL	A	B	C	E	H	J	K	O	N	S	Z	MEMO
01	EX200-1	175.31	60	/	71	21	659	591	415	464	16-Ø22	23	
02	EX200-5	190.03	60	/	70	22	656	584.7	419	464	16-Ø22	21	
03	ZX200	190.03	60	/	70	21	656	584.7	419	464	16-Ø22	21	
04	EX300-1	202.5	55	/	89	25	708	620	465	514	16-Ø22	21	
05	EX400	215.84	60	/	87	28	821	728	556	605	24-Ø24	23	
06	E200B	190	60	10	65	/	656	582	415	455.5	14-Ø21.5	21	
07	CAT320	190	60	7	63	/	660	581	456	496.3	16-Ø21.5	21	
08	E300B	203	60	8	74	/	/	685	450	490	16-Ø21	23	
09	PC60-5	135	50	4	38	/	510	453	265	300	16-Ø17	23	
10	PC100-5	175.47	60	9	40	15	/	540	324	364.5	15-Ø18	21	
11	PC200-5	190.07	60	8.6	70	16.5	/	584.85	474	506	20-Ø19	21	
12	PC400-5	215.84	60	9	90	20	/	725	570	610	26-Ø21	23	
13	PC400-6	228.6	65	10	90	20	/	700	565	607	26-Ø21	21	
14	SK120	171.07	60	7	51	18	601.04	/	324.1	364	15-Ø18	21	
15	SK200-3	190.03	60	10	65	26	656	/	410	449	22-Ø19	21	
16	SK300	203.2	60	8	79	26	773	/	435	476	26-Ø22	23	
17	SK320	213.99	53	9	78	25	735	650	/	493	26-Ø21	21	
18	SH200	190.03	60	8	64	22	650	580	/	440	22-Ø18	21	
19	SH300	202.62	50	8	78	35	765	681	/	472	24-Ø22	23	
20	SE210	171.05	60	6.35	70	18	648	580	402	/	22-Ø17	23	
21	SE280LC-3	203.24	60	6.3	75	24	771	686.6	450.5	/	16-Ø21.5	23	
22	EC290	203.2	60	9.65	84	23	771	686.1	410	/	24-Ø21	23	
23	EC360	216.65	60	/	88	24	748	/	450	490	24-Ø21	21	
24	DH280-3	203.16	60	/	82	24.5	765	/	451	490	16-Ø22	23	
25	R290	202.62	40	8	78	/	768	678	451	490	16-Ø22	23	
26	CR6358	171.45	60	6	61	/	594	524.7	324.2	364.2	15-Ø17.5	21	





引导轮的参考技术参数 IDLER REF. TECH DATA

NO.	MODEL	A	B	C	D	E	F	M	N	L	MEMO
01	EX100	454	495	/	/	218	257.5	4-M16	70	80	
02	EX100M-5	560	600	/	/	228	285	4-M16	64	86.5	
03	EX200-1	515	555	85	160	/	/	4-M16	64	82.5	
04	EX200-5	506	546	85	160	/	/	4-M16	64	82.5	
05	ZX200	500	/	/	159	236.5	282.5	4-M16	64	110	
06	EX400	625	/	/	209	269	328.4	4-M20	85	105	
07	EX450	630	671	105	/	/	330	4-M20	85	108	
08	PC100	489	527	52	/	/	227	4-M14	44	301.5	
09	PC200-5	520	560	/	/	246	280	4-M16	66	197.5	
10	PC400-5	660	705	/	/	290	410	4-M24	66	275	
11	E200B	500	535	/	/	203	270	4-M16	60	300	
12	CAT320	505	547	/	165	207	270	4-M16	60	300	
13	SK200-3	500	535	85	163	232	280	4-M16	/	250	
14	SK300	564	606	102	204	260	314	2-M20	/	300	
15	SK320	564	606	98	204	288	320	2-M20	/	275	
16	SH200	515	555	85	160	203	280	4-M16	90	61	
17	DH280-3	600	650	100	200	236	325	4-M16	70	98	
18	R290	598	650	102	203	290	360	4-M16	65	292	
19	HD450	454	490	70	134	188	241	4-M16	64	82	
20	D4H(FRONT)	475	509	70	135	/	/	/	/	/	
21	D4H(REAR)	500	534	70	135	/	/	/	/	/	
22	D5H	538	578	84	160	/	/	/	/	/	
23	D6H	570	610	94	190	/	/	/	/	/	
24	D6D	677	718	95	189	246	287.5	4-M16	61	86	
25	D7G	750	790	110	203	310	370	2-M16	59	94	
26	D85	730	775	100	204	545	388	/	/	432	



SD72



R60



PC60-5



PC60-1



Track Cylinder Assembly



E330



E345



PC400



ZCC850



Track Cylinder Assembly



D20



D6H



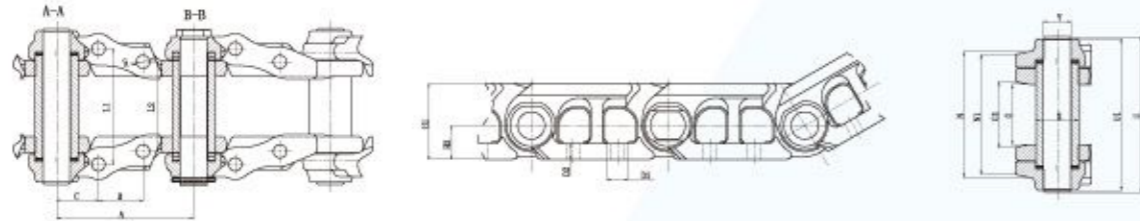
D85ESS



D355



Track Cylinder Assembly



链条总成的参考技术参数 LINK ASSY REF. TECH DATA

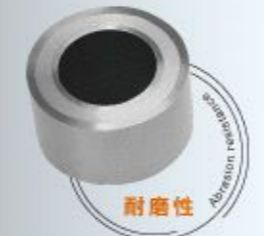
NO.	MODEL	A	B	ΦS	G	H1	L1	L2	N1	U	ΦX	ΦY	EXCHANGE MODEL
01	SD101A	101.6	/	/	43	/	/	/	78.995	103	32	19	PC200-7
02	SD125A	125	/	11	56	/	/	80	95	130	32	22	FT4314
03	SD125B	125	/	10.7	56	/	/	80	95	130	32	21.9	
04	SD135A	135	/	12.5	/	/	99	72	101.15	141	41.15	24.2	PC60-5
05	SD135B	135	/	12.5	/	/	99	72	104.09	136	39	22	DH55
06	SD135C	135	/	14.5	/	/	110	/	112.15	150	41.15	24.2	HD250
07	SD135D	135	/	12.5	/	/	/	/	107.69	140	35.15	22.2	R55
08	SD135E	135	46	12.5	/	/	/	/	84.85	120	35.15	22.2	PC40-7
09	SD135F	135	46	12.5	56	65	/	/	/	139	35	22	AK171
10	SD140A	140	/	12.3	58	70	/	/	/	137	37.15	25.15	KT140
11	SD140C	140	/	12.3	51.6	78	/	/	/	139	42	27	VA1271
12	SD140D	140	/	12.3	58	70	/	/	/	139	37.18	25.18	FT1351B
13	SD154A	154	/	14.5	45	74	/	/	/	130	41.15	24.2	PC60-6
14	SD154B	154	55	14.5	54.6	80	/	/	/	155	46.45	30.5	EX60
15	SD154C	154.5	57	14.5	51	87	111.5	81.5	122.33	170	46.45	30.5	PC100-3
16	SD160A	160	/	14.8	65	/	/	/	130	158	45	30	FT4300
17	SD160B	160	/	14.5	65	/	/	/	130	158	45	30	FL6
18	SD171A	171	/	16.5	73	/	/	/	138.07	178	50.75	33.4	EX100.EX120.SH120
19	SD171B	171	/	16.5	86.2	/	/	/	165.2	212	53.7	36.5	R200
20	SD175A	175	/	16.5	/	/	102.4	86.4	117.9	166	46.45	30.5	PC100-5
21	SD175B	175	57	18.5	/	/	158.4	122.4	169.85	216	55.3	38	HD700
22	SD1754A	175.4	/	18.5	/	/	144.5	125.4	166.63	214	58.8	36.5	EX200-1
23	SD190A	190	/	18.5/20.5	/	/	160.4	124.4	/	/	59.3	38	PC200-315
24	SD190B	190	/	20.5	/	/	155.6	119.6	/	/	58.8	36.5	E200B
25	SD203A	203	/	20.3	100.4	116	178.4	138.4	/	/	66.7	44.6	PC300-1
26	SD216A	216	/	22.5	100	116	178.4	140.4	/	/	66.7	44.6	PC300-6

产品理化检测 Physics And Chemistry Detecting



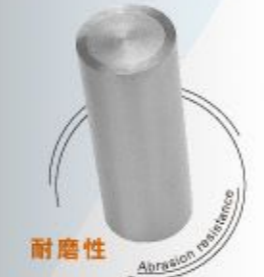
- 链轨经调质后, 轨面经中频硬化处理, 保证了最大强度及耐磨性。

- The chain goes through thermal refining first, and then its chain rail surface undertakes medium frequency induction. All the heat treatment ensure chain strength and wear-resisting property greatly.



- 销套经调质后, 进行内外表面中频淬火处理, 保证了合理的心部强度及内外表面的耐磨性。

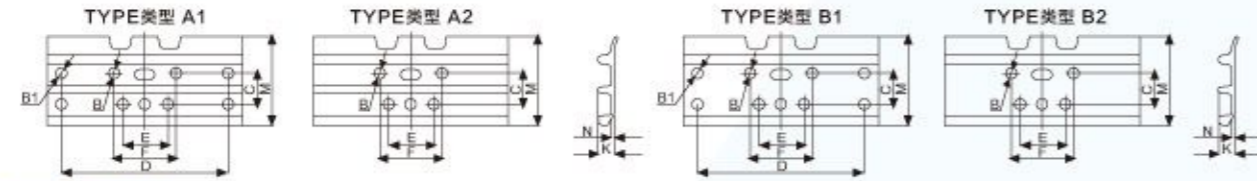
- After hardening and tempering, the inner and outer surface of the pin will have medium-frequency quenching treatment, which ensures reasonable core strength and the wear resistance of inner and outer surface.



- 销轴调质后, 经表面中频淬火处理, 保证了足够的心部强度及外表面的耐磨性。

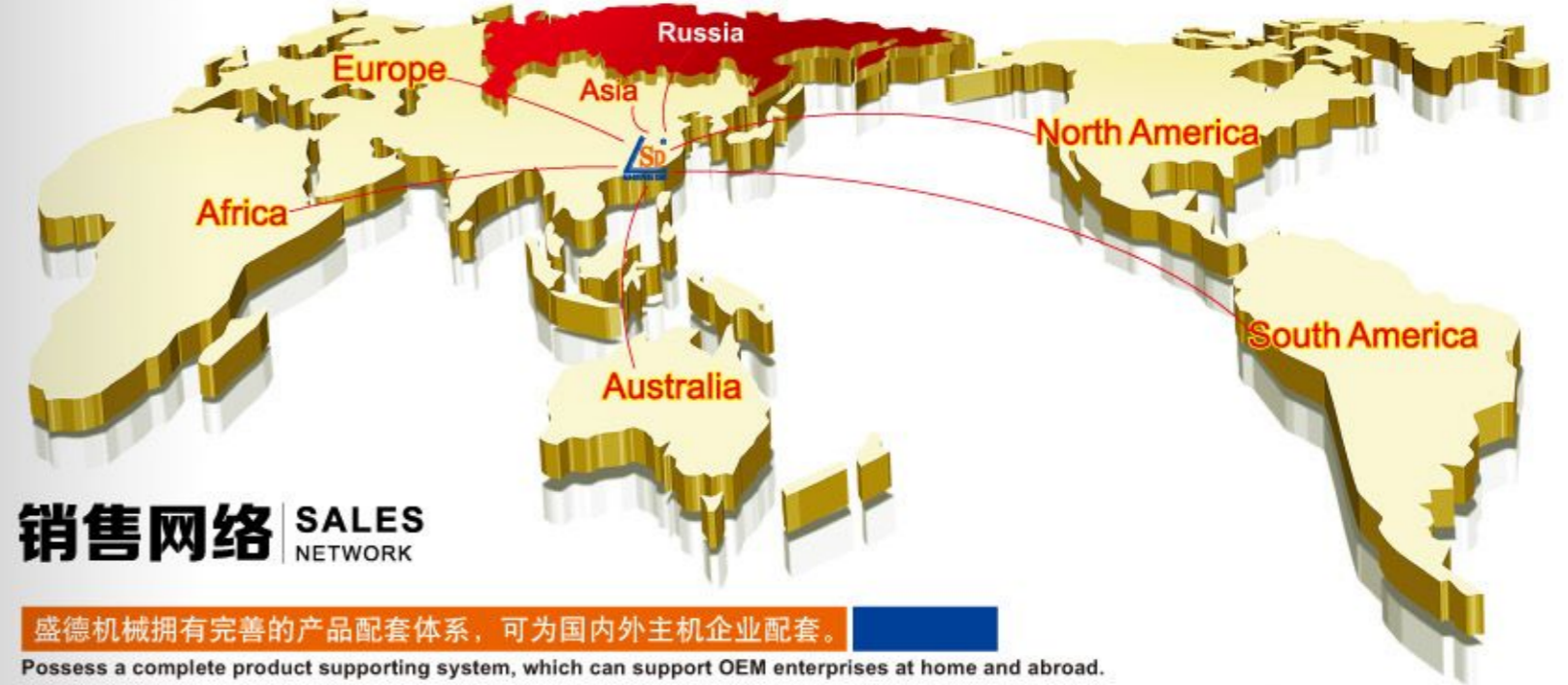
- The pin is done the tempering and the surface medium-frequency quenching treatment, which ensures the sufficient hardness of core and abrasion resistance of external surfaces.





履带板的参考技术参数 TRACK SHOES REF.TECH DATA

NO.	MODEL	TYPE	PITCH	BL径	B1	C	E短孔距	F长孔距	D	K高	M板宽	N厚度	L (长度可定制)
1	D90-06-230	B2	90	∅10.5		22	40	54		22.5	90	5.5	300
2	D101-06-300	B2	101	∅10.5		22	55	55		22.5	110	6	300
3	D135A-06-400	A1	135	∅12.5	∅14	43.4	72	99	300	20	154	6	400
4	D135E-06-400	A2	135	∅12.5		46	64	94		20	154	6	400
5	D135G-06-400	A1	135	∅12.5	∅14	46	80	104	300	20	154	6	400
6	D135I-06-450	A2	135	∅13.1		47	76	106		20	154	6	450
7	D135Q-06-300	A2	135	∅12.5		46	61	85		20	154	6	300
8	D140A-8.5-400	A2	140	∅12.5		52	86	86		28	163	8.5	400
9	D154A-06-450	A1	154	∅14.5	∅16	57	73	89	350	26	166	6	450
10	D154B-06-450	A1	154	∅14.5	∅16	55	90	90	350	26	166	6	450
11	D154C-06-450	A1	154	∅14.5	∅16	57	82.4	112.4	350	26	166	6	450
12	D160A-8.5-450	A2	160	∅14.5		56	99	99		34	178	8	450
13	D171A-08-500	A1	171	∅16.5	∅18	60.5	108	108	400	28	190	8	500
14	D171B-08-600	A2	171	∅16.5		58.7	125.4	144.4		28	190	8	600
15	D175A-08-500	A1	175	∅16.5	∅18	57	86.4	102.4	400	28	198	8	500
16	D175B-08-600	A2	175	∅18.5		57	122.4	158.4		34.5	198	8	600
17	D175C-08-600	A2	175.4	∅16.5		58.7	125.4	144.5		34.5	198	8	600
18	D190A-10-600	A2	190	∅20.5		62	124.4	160.4		34.5	217.5	8/10	600
19	D190B-10-600	A2	190	∅20.5		69	119.6	155.6		34.5	217.5	8/10	600
20	D203A-11-600	A2	203	∅20.5		72.2	138.4	178.4		41	232	11/13	600
21	D203B-11-600	A2	203	∅21.0		72	129	179		41	232	11/13	600
22	D203C-11-600	A2	203	∅22.5		72.2	138.4	178.4		41	232	11/13	600
23	D216A-11-600	A2	216	∅22.5		76.2	140.4	178.4		41	250	11/13/14	600
24	D216B-11-600	A2	216	∅22.5		76.2	146	184		41	250	11/13/14	600
25	D216C-11-600	A2	216	∅22.5		76	140	190		41	250	11/13/14	600
26	D228A-17-600	A2	228	∅24.5		76.2	144	184		57	258	17	600
27	D260A-20-650	B2	260	∅27.5		76.2	184.1	234.9		73.5	306	20.5	650



销售网络 SALES NETWORK

盛德机械拥有完善的产品配套体系，可为国内外主机企业配套。

Possess a complete product supporting system, which can support OEM enterprises at home and abroad.

欧美区

- 美国 U.S.A
- 西班牙 Spain
- 葡萄牙 Portugal
- 匈牙利 Hungary
- 爱尔兰 Ireland
- 俄罗斯 Russia
- 波兰 Poland
- 意大利 Italy
- 荷兰 Holand
- 加拿大 Canada
- 瑞典 Sweden
- 瑞士 Switzerland
- 希腊 Greek
- 英国 U.K
- 巴西 Brazil
- 乌拉圭 Uruguay

亚澳区

- 澳大利亚 Australia
- 新西兰 New Zealand
- 日本 Japan
- 新加坡 Singapore
- 印度 India
- 孟加拉 Bangladesh
- 越南 Vietnam
- 印度尼西亚 Indonesia
- 菲律宾 Philippines
- 泰国 Thailand
- 韩国 Korea
- 马来西亚 Malaysia
- 中国香港 Hong Kong
- 蒙古 Mongolia
- 缅甸 Myanmar
- 柬埔寨 Cambodia

非洲区

- 埃及 Egypt
- 南非 South Africa

中东区

- 以色列 Israel
- 土耳其 Turkey
- 沙特阿拉伯 Saudi Arabia
- 阿联酋 U.A.E
- 黎巴嫩 Lebanon
- 约旦 Jordan
- 科威特 Kuwait
- 伊朗 Iran