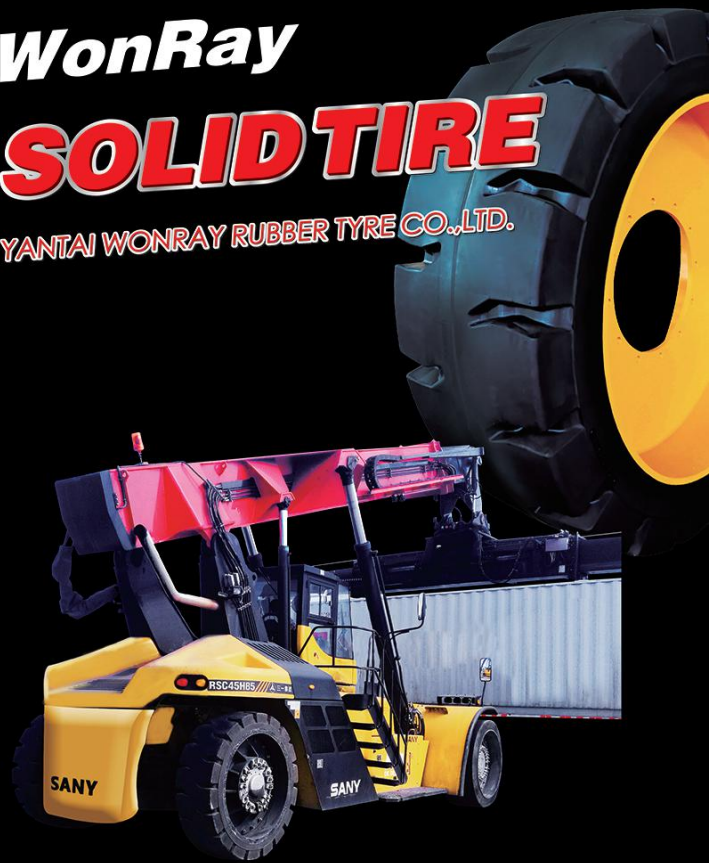


WonRay

SOLID TIRE

YANTAI WONRAY RUBBER TYRE CO.,LTD.



YANTAI WONRAY RUBBER TYRE CO.,LTD.

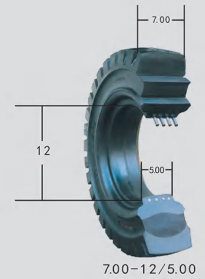
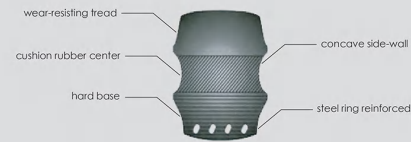
Add:No. 1 Jinxin Industrial Park, Zhifu Dist., Yantai, Shandong
Mp:138-5352-9077 | Tel/fax:0086-535-6828829
E-mail:export@wonray.com | Website:www.wonray.com

COMPANY PROFILE

- Yantai WonRay Rubber Tire Co., Ltd. is a comprehensive enterprise that manufactures and sells solid tires, as well as conducts research and development of the latest technology of solid tires.
- Relying on most up to date international technology advance, our company is equipped with the best testing instruments. To ensure that our products have the leading advantages, we implement the most rigorous quality control systems, and enforce full monitoring in our manufacturing process.
- Our company products conform to standards such as Chinese GB, US TRA, European ETRTO, and Japanese JATMA and have passed the ISO9001:2015 quality certification.
- Our company has independently developed and registered two product brands: WRST and WonRay.
- Based on the rich experience of technology research and development, our technical team has demonstrated their capability of delivering the best tire solution and products to clients with different working environments, ranging from sea ports, supply chain centers, mines, aviation grounds, high temperature operations, refuse disposal centers, railway constructions, tunnel constructions, and heavy goods transportations to factories that require a super clean working condition.
- Currently our company has an annual sales of 300,000PCS tires, among which, 60% of them are being exported to North America, Europe, Northeast Asia, Oceania, and Africa. In the domestic market, we provide direct ancillary services to major forklift manufacture companies, metallurgical enterprises, airports and seaports. Our company also matching products to many prominent enterprises, such as Sany Heavy Industry, ZOOMLION, MCC Baosteel, SUNWARD, Liugong Machinery, XCMG and Haipeng Industrial etc.
- Our sales network is widespread all over the world. We provide customers excellent after-sales care and support.
- Thank you for choosing our products.



SOLID TIRES FOR PNEUMATIC TIRES RIMS



WRST/SERIES

This series is developed as our featured product which can be used on different kinds of poor working environment.

Extremely deep tread pattern and unique tread design are two factors which provide WRST series higher wear resistance than other similar brands.

Big tread pattern design increase tire contact, reduce ground pressure, lower rolling resistance, and strengthen wear resistance.



WonRay/SERIES

WonRay series chooses new tread pattern, strictly control production cost and truly achieve low price with high quality.

Three compound construction, a new design popular in Europe and America.
Wear resistant tread compound
resilient center compound
super base compound
Steel ring reinforced



NON-MARKING TIRE

High Performance Non-marking tires with light color or other colorful rubber compound are designed to operate where clean floors are a priority.

No mark is left on the ground when it is turning or braking, especially suitable for the application of enterprises where contamination is strictly prohibited, such as pharmacy, catering trade, textile, electron, aviation, etc. Any sizes of black resilient and press-on tires can be made into Non-marking tire.



SOLID TIRES FOR PNEUMATIC TIRES RIMS

SOLID TIRES FOR FORKLIFT AND SMALL FIELD RUNNING VEHICLES



No.	Size of Tire	Rim Size	Pattern No.	Outside Diameter	Section Width	Net Weight (Kg)	Max Load (Kg) Counter Balance Lift Trucks						Other Industrial Vehicles				
							± 5mm		± 1.5%kg		10km/h		16km/h		25km/h		25km/h
							Driving	Steering	Driving	Steering	Driving	Steering	Driving	Steering			
1	4.00-8	3.00/3.50/3.75	R701/R706	423/410	120/115	14.5/12.2	1175	905	1080	830	1000	770	770				
2	5.00-8	3.00/3.50/3.75	R701/R705/R706	466	127	18.40	1255	965	1145	880	1060	815	815				
3	5.50-15	4.50E	R701	666	144	37.00	2525	1870	2415	1790	2195	1625	1495				
4	6.00-9	4.00E	R701/R705	533	140	26.80	1975	1520	1805	1390	1675	1290	1290				
5	6.00-15	4.50E	R701	694	148	41.20	2830	2095	2705	2000	2455	1820	1675				
6	6.50-10	5.00F	R701/R705	582	157	36.00	2715	2090	2485	1910	2310	1775	1775				
7	7.00-9	5.00S	R701	550	164	34.20	2670	2055	2440	1875	2260	1740	1740				
8	7.00-12/W	5.00S	R701/R705	663	163/188	47.6/52.3	3105	2390	2835	2180	2635	2025	2025				
9	7.00-15	5.50S/6.00	R701	738	178	60.00	3700	2845	3375	2595	3135	2410	2410				
10	7.50-15	5.50	R701	768	188	75.00	3805	2925	3470	2670	3225	2480	2480				
11	7.50-16	6.00	R701	805	180	74.00	4400	3385	4025	3095	3730	2870	2870				
12	8.25-12	5.00S	R701	732	202	71.80	3425	2635	3125	2405	2905	2235	2235				
13	8.25-15	6.50	R701/R705/R700	829	202	90.00	5085	3910	4640	3570	4310	3315	3315				
14	14x4 1/2-8	3.00	R706	364	100	7.90	845	650	770	590	715	550	550				
15	15x4 1/2-8	3.000	R701/R705	383	107	9.40	1005	775	915	705	850	655	655				
16	16x6-8	4.33R	R701/R705	416	156	16.90	1545	1190	1410	1085	1305	1005	1005				
17	18x7-8	4.33R	R701/W/R705	452	154/170	20.8/21.6	2430	1870	2215	1705	2060	1585	1585				
18	18x7-9	4.33R	R701/R705	452	155	19.90	2230	1780	2150	1615	2005	1505	1540				
19	21x8-9	6.00E	R701/R705	523	180	34.10	2890	2225	2645	2035	2455	1890	1890				
20	23x9-10	6.50F	R701/R705	595	212	51.00	3730	2870	3405	2620	3160	2430	2430				
21	23x10-12	8.00E	R701/R705	592	230	51.20	4450	3425	4060	3125	3770	2900	2900				
22	27x10-12	8.00E	R701/R705	680	236	74.70	4595	3535	4200	3230	3900	3000	3000				
23	28x9-15	7.00	R701/R705	700	230	61.00	4040	3125	3710	2855	3445	2650	2650				
24	28x12.5-15	9.75	R706	706	300	86.00	6200	4770	5660	4355	5260	4045	4045				
25	140/55-9	4.00E	R705	380	130	10.50	1380	1060	1260	970	1170	900	900				
26	200/50-10	6.50	R701/R705	458	198	25.20	2910	2240	2665	2050	2470	1900	1900				
27	250-15	7.00/7.50	R701/R705	726	235	73.60	5595	4305	5110	3930	4745	3650	3650				
28	300-15	8.00	R701/R705	827	256	112.50	6895	5305	6300	4845	5850	4500	4500				
29	355/65-15	9.75	R701	825	302	132.00	7800	5800	7080	5310	6000	4800	5450				

SOLID TIRES FOR PNEUMATIC TIRES RIMS

SOLID OTR TIRES



No.	Size of Tire	Rim Size	Pattern No.	Outside Diameter	Section Width	Net Weight (Kg)	Max Load (Kg) Counter Balance Lift Trucks						Other Industrial Vehicles				
							± 5mm		± 1.5%kg		10km/h		16km/h		25km/h		25km/h
							Driving	Steering	Driving	Steering	Driving	Steering	Driving	Steering			
1	8.25-20	6.50T/7.00	R701	976	217	123	5335	4445	4870	4040	4525	3770	3770				
2	9.00-16	6.00/6.50/7.00	R701	880	212	109	5290	4070	4830	3715	4485	3450	3450				
3	9.00-20	7.00/7.50	R701/R700	1005	236	148	6365	5305	5815	4845	5400	4500	4500				
4	10.00-20	6.00/7.00/7.50/8.00	R701	1041	248	170	7075	5895	6460	5385	6000	5000	5000				
5	10.00-20	7.50/8.00	R700	1041	248	176	7075	5895	6460	5385	6000	5000	5000				
6	11.00-20	7.50/8.00	R701	1058	270	193	7715	6430	7045	5870	6540	5450	5450				
7	12.00-20	8.00/8.50	R701/R700	1112	285	230	8920	7435	8140	6785	7560	6300	6300				
8	12.00-24	8.50/10.00	R701	1218	300	280	9125	7605	8335	6945	7740	6450	6450				
9	12.00-24	10.00	R706	1250	316	312	9445	7870	8630	7190	8010	6675	6675				
10	13.00-24	8.50/10.00	R708	1240	318	310	10835	9025	9890	8240	9185	7655	7655				
11	14.00-20	10.00	R706	1250	316	340	10800	8640	10430	8840	9730	7315	7315				
12	14.00-24	10.00	R701	1340	328	389	12165	10135	11105	9255	10315	8595	8595				
13	14.00-24	10.00	R708	1330	330	390	12165	10135	11105	9255	10315	8595	8595				
14	16.00-25	11.25	R711	1446	390	600	16860	13490	15170	11400	12480	10130	10130				
15	17.5-25	14.00	R711	1368	458	568	17720	14180	16880	12690	15960	12000	12000				
16	18.00-25	13.00	R711	1620	500	928	21200	16960	20480	15400	19100	14360	14360				
17	20.5-25	17.00	R709	1455	500	720	24430	18530	22290	17170	20660	15880	15880				
18	23.5-25	19.50	R709/R711	1620	560/570	1075	30830	24660	29790	22400	27770	20880	20880				
19	24.5-25	22.00	R709	1736	650	1460	39300	31400	37400	28100	35400	26600	26600				
20	29.5-25	25.00	R709	1840	730	1820	48100	37055	43880	33800	40340	31265	31265				
21	29.5-29	25.00	R709	1830	746	1745	45760	38130	41770	34810	38800	32330	32330				
22	10x16.5 (30x10-16)	6.00-16	R708/R711	788	250	80				With Hole			3330				
23	12x16.5 (33x12-20)	8.00-20	R708	840	275	91				With Hole			4050				
24	16/70-20 (34-17.5)	8.50/11.00-20	R708	940	330	163				With Hole			5930				
25	38.5x4-20 (46.7.5.38.68-18.5)	11.00-20	R708	966	350	171				With Hole			6360				
26	38.65-24 (46.65-22.5)	10.00-24	R708	1062	356	208				With Hole			6650				
27	44.65-24 (44.65-22.5)	12.00-24	R708	1152	428	312				With Hole			9030				

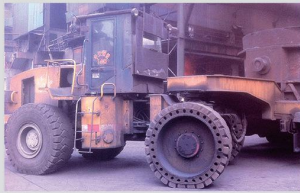
SPECIAL TIRES FOR TRAILERS



No.	Size of Tire	Rim Size	Pattern No.	Outside Diameter	Section Width	Net Weight	Max Load (Kg)			
								±5mm		Other Industrial Vehicles
								±5mm	±1.5%	
1	2.00-8 (12x4)	2.50C/3.000	R700/R706/R707	318/310	103/100	5.00	380			
2	3.00-5	2.15	R713/R716	268/250	77/72	3.70	330			
3	3.20-8	3.000	R706	328	110	6.20	520			
4	3.50-5 (300x100)	3.000	R701	300	100	6.30	380			
5	3.60-8	3.000	R706	368	110	8.60	660			
6	4.00-4	2.00/2.50C	R701	300	100	6.30	420			
7	4.00-8 (wide)	3.75	R706	423	120	14.50	730			
8	4.00-8	3.000/3.75	R701/R706	410	115	12.20	695			
9	16x5-9	3.50/4.00	R705	404	126	12.50	710			
10	300x125 SM	FB	R700	302	125	11.30	910			
11	350x100 SM	FB	R700	352	100	12.30	850			

SOLID TIRES WITH RIMS

SKID STEER SOLID TIRES WITH RIMS



No.	Size of Tire	Tire with hole (Yes/No)	Pattern No.	Outside Diameter	Section Width	Net Weight (Kg)	Max Load (Kg)
				± 5mm	± 5mm	± 1.5%kg	Other Industrial Vehicles
							16km/h
1	FB10x16.5 (30x10-16)	Yes	R708/R711	788	250	116	3700
2	FB12x16.5 (33x12-20)	Yes	R708	840	275	136	4500
3	FB16-70-20	Yes	R708	1060	400	312	8530
4	FB 16/70-20(14-17.5) Economy	Yes	R708	940	330	216	6620
5	FB40-16x30	No	R700	1016	406	453	9690
6	FB38.5x14-20 (14x17.5, 385/650-19.5)	Yes	R708	966	350	242	7070
7	FB385/65-24 (385/65-22.5)	Yes	R708	1062	356	290	7390
8	FB445/65-24 (445/65-22.5)	Yes	R708	1152	428	394	10040
9	FB14.00-24	No	R701	1340	328	445	10700
10	FB17.5-25	Yes	R711	1368	458	631	13400
11	FB18.00-25	Yes	R711	1620	500	960	18795
12	FB20.5-25 (57x20)	No	R709	1455	500	765,950	17470
13	FB23.5-25	Yes	R709/R711	1620	580/570	1040	23400
14	FB26.5-25	Yes	R709	1736	650	1395	29260
15	FB29.5-25	Yes	R709	1840	730	1780	34390
16	FB29.5-29	No	R709	1830	746	1944	33985



SOLID TIRES FOR MINING MACHINERY

No.	Size of Tire	Rim Size	Pattern No.	Outside Diameter	Section Width	Max Load (Kg)	
				± 5mm	± 5mm	Other Industrial Vehicles	
							16km/h
1	8.25-20	FB	R701	976	217		4230
2	10.00-20	FB	R701	1044	248		5300
3	12.00-24	FB	R701	1218	300		7690
4	14.00-20	FB	R706	1250	316		9495
5	14.00-24	FB	R701	1340	328		10700
6	16.00-25	FB	R711	1460	410		13340
7	17.5-25	FB	R711	1368	458		13400
8	18.00-33	FB	R711	1842	458		18380
9	20.5-25	FB	R709	1455	500		17660
10	1098x500	FB	R711	1098	500		14235
11	1510x470	FB	R715	1516	470		16120

SOLID TIRES WITH RIMS

CHARACTERISTICS OF STRUCTURE

The wheel baseband is made according to the fitting specifications of the vehicles pivot bracket. And the thickness and the structure can be adjusted based on the tire loading. After treating to the basebands, curing reasonable rubber around the baseband surface to guarantee the loading of tires and other usage performance.

CHARACTERISTICS OF USAGES

1. Smaller deformation, better stability and security.
2. Running smoothly, slight shaking and twittering.
3. Low rolling resistance, reducing energy consumption, in accordance with the world trend of low-carbon economy.
4. Lower heat built up, good heat yield, overcome the blow-out problem.
5. Easy assembling, no need to fit rims, can be fixed to the vehicles and facilities directly, no worry for spinning.
6. Heavier loading, 10-15% increase of loading than the same size of tires.



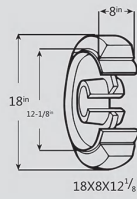
R706

SOLID TIRES FOR SINTERING MACHINE

No.	Size of Tire	Rim Size	Pattern No.	Outside Diameter	Section Width	Net Weight (Kg)	Max Load (Kg)
				± 5mm	± 5mm	± 1.5%kg	Other Industrial Vehicles
							16km/h
1	12.00-20	FB	R701	1116	285	258	7645
2	14.00-20	FB	R706	1250	316	400	9496



PRESS-ON SOLID TIRES



18X8X12 1/8



SM (R700) TR (R710)

SOLID TIRES FOR LIFTING PLATFORM



SOLID TIRE

No.	Size of Tire		Types of Pattern	Net Weight (Kg) ±1.5%	Max Load (Kg)					
	Inch (in)	Millimeter (mm)			10km/h		16km/h		Other Industrial Vehicles	
					Driving	Steering	Driving	Steering	16km/h	
1	12x4 1/2x8	305x114.3x203.2	SM	8.60	970	865	860	780	745	
2	12x5x8	305x127x203.2	SM	10.00	1050	970	1020	950	850	
3	13 1/2x5 1/2x8	342.9x139.7x203.2	SM	13.00	1400	1245	1235	1125	1075	
4	13 1/2x7 1/2x8	342.9x190.5x203.2	SM	20.00	2065	1835	1825	1660	1590	
5	14x4 1/2x8	355.6x114.3x203.2	SM/TR	11.10	1085	965	960	870	835	
6	14x5x10	355.6x127x254	SM	11.80	1250	1125	1185	1065	1000	
7	15x4x11 1/4	381x102x285.8	SM/TR	13.50	1290	1150	1145	1040	995	
8	15x5x11 1/4	381x127x285.8	SM/TR	13.50	1290	1150	1145	1040	995	
9	15x6x11 1/4	381x152.4x285.8	SM	15.00	1300	1170	1235	1110	1040	
10	16x5x10 1/2	406.4x127x266.7	SM/TR	15.00	1400	1245	1240	1125	1075	
11	16x6x10 1/2	406.4x152.4x266.7	SM/TR	18.00	1775	1580	1570	1430	1365	
12	16x7x10 1/2	406.4x178.8x266.7	SM/TR	21.40	2155	1915	1905	1730	1655	
13	16 1/4x6x11 1/4	413x127x285	SM/TR	15.10	1415	1260	1250	1135	1090	
14	16 1/4x7x11 1/4	413x152x285	SM/TR	18.50	1780	1585	1575	1480	1370	
15	16 1/4x7x11 1/4	413x178x285	SM/TR	21.70	2150	1915	1900	1730	1655	
16	17x5x12 1/8	431.8x127x308	SM	16.00	1460	1300	1295	1175	1125	
17	18x5x12 1/8	457.2x127x308	SM	17.60	1525	1355	1350	1225	1175	
18	18x6x12 1/8	457x152x308	SM/TR	21.80	1945	1735	1720	1565	1500	
19	18x7x12 1/8	457x178x308	SM/TR	26.20	2370	2110	2095	1905	1820	
20	18x8x12 1/8	457x203.2x308	SM/TR	29.80	2790	2485	2470	2245	2145	
21	18x9x12 1/8	457x229x308	SM/TR	33.70	3215	2860	2840	2580	2470	
22	20x8x16	508x203.2x406.4	SM/TR	29.00	2795	2490	2475	2250	2150	
23	20x9x16	508x228.6x406.4	SM/TR	33.20	3190	2840	2820	2565	2455	
24	21x7x15	533x178x381	SM/TR	30.30	2665	2370	2355	2140	2050	
25	21x8x15	533.4x203.2x381	SM/TR	35.20	3140	2795	2780	2525	2415	
26	21x9x15	533.4x228.6x381	SM/TR	40.10	3620	3220	3200	2910	2785	
27	22x8x16	558.8x203.2x406.4	SM	37.40	3255	2895	2880	2615	2500	
28	22x9x16	559x229x406	SM/TR	43.00	3745	3335	3315	3010	2880	
29	22x10x16	559x254x406	SM	48.10	4240	3775	3750	3410	3265	
30	22x12x16	559x305x406	SM	57.00	5230	4655	4625	4205	4025	
31	22x14x16	559x355.6x406	SM	69.00	6220	5535	5500	5000	4785	
32	22x16x16	559x406x406	SM	79.00	7205	6415	6375	5795	5545	
33	26x10	660x250x480	SM	68.00	4845	4310	4285	3895	3725	
34		620x250x480	SM	59.00	4520	4070	3995	3595	3475	
35	28x12x22	711x304x558.8	SM	77.00	6265	5575	5545	5035	4820	
36	28x14x22	711x355.6x558.8	SM	95.00	7450	6630	6590	5990	5730	
37	28x16x22	711x406.4x558.8	SM	110.00	8635	7685	7640	6940	6645	
38	40x16x30	1016x406x762	SM	245.00	12595	11210	11140	10125	9690	

No.	Size of Tire	Rim Size	Pattern No.	Outside Diameter	Section Width	Net Weight (Kg) ± 1.5%kg	Max Load (Kg)
				± 5mm	± 5mm		
				Other Industrial Vehicles			
1	10x3		FB R706	254	74	7.00	425
2	10x4		FB R706	256	102	5.90	630
3	12x4 (With brake)		FB R707	310	100	7.6/9.4 (FB)	680
4	12x4 (W/O brake)		FB R707	310	100	7/8.2 (FB)	680
5	12x4.5		FB R707/R712	310	115	15 (G)/10	820
6	12.5x4.25		FB R712	320	108	15.5 (H)/12.6 (J)	810
7	14x4 1/2		FB R713	358	114	14.50	920
8	15x5		FB R712	384	127	20 (G/H)/16.5	1095
9	16x5x12 (With brake)		FB R706/R707	406	125	15.2/18.8 (FB)	1265
10	16x5x12 (W/O brake)		FB R706/R707	406	125	14/17.3 (FB)	1265
11	22x7x17 3/4		FB R714	559	176	48.5 (H)/47.5 (H)	2270
12	32x3x100		FB R713/R707	323	100	9.10	635
13	40x6x125 (J1616x5x12)		FB R706/R707	406	125	17.00	1265
14	40x6x127		FB R713	406	127	18.50	1265
15	2.00-8 (12x4)	2.500/3.00	R706/R700.707	318/310	103/100	5.00	620
16	3.00-5	2.15	R713/R716	268/250	77/72	3.70	335
17	600x190		FB R706	600	190	55.20	2670
18	410x130		FB R717	410	130	17.9	825
19	305/106-254		FB R717	305	76	13.17	425
20	305/100-255		FB R717	305	100	13.1	600
21	230x80		FB R717	230	80	7.3	405
22	16x5x10.5		FB R710	406	127	17.15	1075
23	640x170x560 (25x7)		FB R711	640	170	63.5/129	2340
24	25.6x7		FB R714	650	175	55.00	2120



RIMS

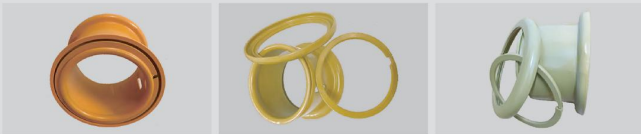
SPLIT RIM



COMPLETE RIM(TWO PIECES)



COMPLETE RIM(THREE PIECES)



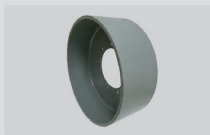
QUICK(CLIP) RIM



PRESS-ON RIM(1)



PRESS-ON RIM (2)



CASES

AERIAL WORK PLATFORM



ANTICORROSION LINE



BOARDING BRIDGE



HOT-METAL CAR



LIFTING PLATFORM



MILLING MACHINE



PORT MACHINE



REACH STACKER



SLAG POT CARRIER



SKID STEER LOADER



STACKING MACHINE



TELESCOPIC BOOM FORKLIFT

