



# 廊坊邦贸过滤设备有限公司

LANGFANG BANGMAO FILTERING EQUIPMENT CO., LTD.

BAMA 过滤让纯净自然与您同行!  
BAMA Filtration pure nature with you!



## 廊坊邦贸过滤设备有限公司

LANGFANG BANGMAO FILTERING EQUIPMENT CO., LTD.

网站: [www.Filtersfilter.com](http://www.Filtersfilter.com)

Website: [www.Filtersfilter.com](http://www.Filtersfilter.com)

电话: 0316-6238508

Tel: 0316-6238508

传真: 0316-6125288

Fax: 0316-6125288

邮箱: [Sales@cnbangmao.com](mailto:Sales@cnbangmao.com)

E-mail: [Sales@cnbangmao.com](mailto:Sales@cnbangmao.com)

地址: 河北省廊坊市固安县温泉休闲商务产业园区林城村工业路 37# 门店

Address: 37# Store, Industry Road, Lincheng Village, Hot Spring Leisure Business Industrial Park, Gu'an County, Langfang City, Hebei Province, China



Professional Efficiency Service 专业、高效、服务



# C

## CONTENTS 目录

公司简介.....	01
BRIEF INTRODUCTION	
资质证书.....	02
QUALIFICATION CERTIFICATE	
液压滤芯.....	03
HYDRAULIC FILTER ELEMENT	
邦贸制造选用的材料.....	06
MATERIALS SELECTED BY BAMA FILTER TRADE MANUFACTURING	
液压过滤器.....	09
HYDRAULIC FILTER HOUSING	
真空泵滤芯.....	11
VACUUM PUMP FILTER ELEMENT	
聚结分离滤芯.....	13
COALESCING SEPARATION FILTER ELEMENT	
不锈钢滤芯.....	14
STAINLESS STEEL FILTER	
空压机三滤.....	16
AIR COMPRESSOR THREE FILTER	
除尘过滤器.....	17
DUST FILTER	



# B

## BRIEF INTRODUCTION 公司简介



廊坊邦贸过滤设备有限公司起源于 2008 年成立的固安县牛驼镇鑫淼滤清器厂（现固安县汉德克过滤设备有限公司）。

公司拥有液压油滤芯生产线、水滤芯生产线、空气滤芯生产线、过滤设备生产线，年生产能力 200 万个过滤元件，5000 台过滤设备生产能力，以及一个研发中心。一个检验中心，100% 的产品都经过检测，以保证产品的质量。

邦贸人始终坚持“创新、质量、服务、经济、奉献、感恩”12 个字的理念。吸收新思想，严把质量关，跟踪全方位服务，坚持生产优质产品。在“追求、员工、技术、精神、兴趣”这 10 个字上。

产品主要应用于：涵盖内燃机、工程机械、石油化工、纺织制药、造纸、冶金、煤矿、食品等多种行业。

邦贸公司在 2022 年上线交叉参考系统，目前支持 25 万个型号交叉参考（每天都会更新型号），客户可以提供现有产品零件号通过交叉参考找到邦贸的可以替代使用的产品。

Langfang Filtration Equipment Co., Ltd. originated from Xinmiao Filter Factory (now Gu'an Handeke Filtration Equipment Co., Ltd.), which was established in 2008 in Niouma Town, Gu'an County. Here it is better to add a mind map - the origin of the three companies together

The company has hydraulic oil filter element production line, water filter element production line, air filter element production line, filtration equipment production line, annual production capacity of 2 million filter elements, 5,000 sets of filtration equipment production capacity, as well as a research and development centre. An inspection centre, 100% of the products are tested to ensure the quality of the products.

We always insist on the concept of "Innovation, Quality, Service, Economy, Dedication and Gratitude". We absorb new ideas, strictly control the quality, track all-round service, and insist on producing high-quality products. In the 10 words of "pursuit, staff, technology, spirit, interest".

The products are mainly used in: covering internal combustion engine, engineering machinery, petrochemical, textile and pharmaceutical, paper making, metallurgy, coal mining, food and many other industries.

Bontrade will go online with the cross-reference system in 2022, which currently supports 250,000 model cross-references (models will be updated every day), and customers can provide existing product part numbers to find Bontrade's products that can be used in place of them through cross-referencing.

# Q

## QUALIFICATION CERTIFICATE 资质证书



# H

## HYDRAULIC FILTER ELEMENT 液压滤芯





# H

## HYDRAULIC FILTER ELEMENT 液压滤芯



# H

## HYDRAULIC FILTER ELEMENT 液压滤芯

### 邦贸供应液压滤芯种类 Bontrade supplies hydraulic filter element types

- |        |                                      |
|--------|--------------------------------------|
| 液压滤芯   | Hydraulic Filter Element             |
| 回流滤芯   | Return filter element                |
| 吸油滤芯   | Suction filter element               |
| 线路滤芯   | Line filter element                  |
| 压力滤芯   | Pressure Filter Element              |
| 液压滤芯配件 | Hydraulic Filter Element Accessories |
| 旁路液压滤芯 | Bypass Hydraulic Filter Element      |

### 交叉参考品牌 Cross-reference brands

- 邦贸 BAMA VS 颇尔 PALL 邦贸 BAMA VS 贺德克 HYDAC  
 邦贸 BAMA VS 英德诺曼 INTERNORMEN 邦贸 BAMA VS 翡翠 MP FILTRI  
 邦贸 BAMA VS 雅歌 ARGO 邦贸 BAMA VS 西德福 STAUFF  
 邦贸 BAMA VS 富卓 FILTREC 邦贸 BAMA VS 马勒 MAHLE  
 邦贸 BAMA VS 大生 TAISEI 邦贸 BAMA VS 派克 PARKER  
 邦贸 BAMA VS 施罗德 SCHROEDER 邦贸 BAMA VS 力士乐 REXROTH  
 邦贸 BAMA VS UCC 邦贸 BAMA VS 围格士 VICHERS  
 邦贸 BAMA VS 海普洛 HY-PRO 邦贸 BAMA VS 索菲玛 SOFIMA  
 邦贸 BAMA VS 赫格隆 HAGGLUNDS 邦贸 BAMA VS 唐纳森 donaldson

非标定制  
 篇幅有限，不能全部展示  
 更多产品请联系我们

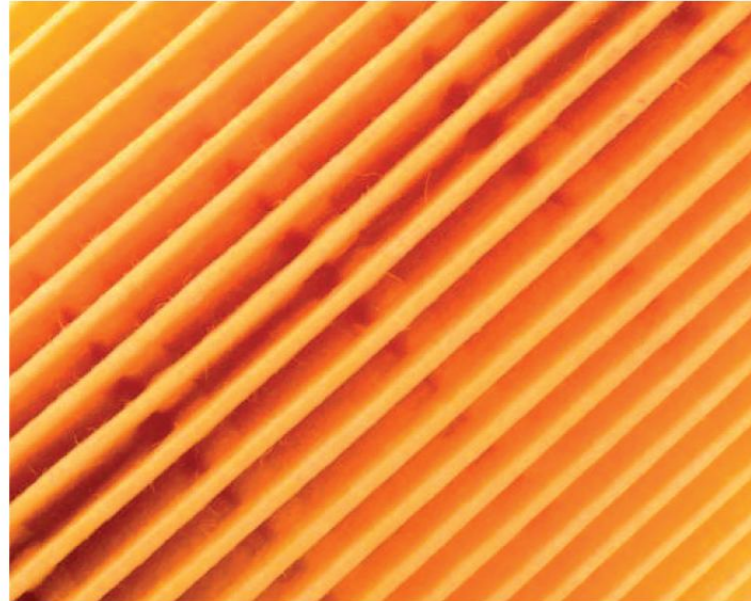
Non-standard customisation  
 Limited space, can not show all  
 More products please contact us



# M

## MATERIALS SELECTED BY BAMA FILTER TRADE MANUFACTURING 邦贸制造选用的材料

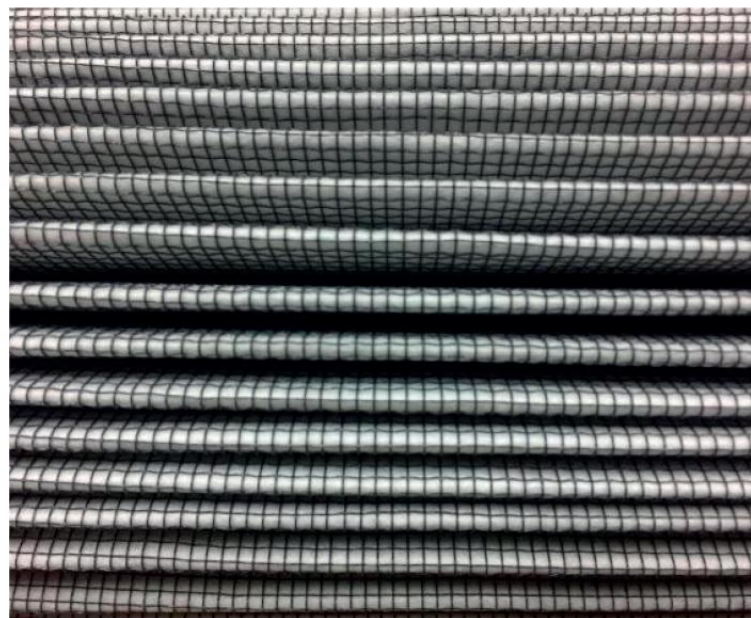
### 纤维素滤材 Cellulose filter material



纤维素是一种广泛丰富的有机聚合物，主要来自木浆和棉花，生产成本相对便宜。然而，它缺乏均匀的孔隙结构使其具有标称额定值，这可以使纤维素过滤器容易变质和脱落。虽然纤维素可以捕获颗粒，但在保留颗粒方面效果较差，这在脱落的同时会导致工业系统的损坏。

Cellulose is a widely abundant organic polymer, mainly from wood pulp and cotton, and is relatively cheap to produce. However, its lack of a uniform pore structure gives it a nominal rating, which can make cellulose filters susceptible to deterioration and shedding. Whilst cellulose can trap particles, it is less effective at retaining them, which can lead to damage to industrial systems whilst shedding.

### 玻璃纤维滤材 Glass Fibre Filter Media

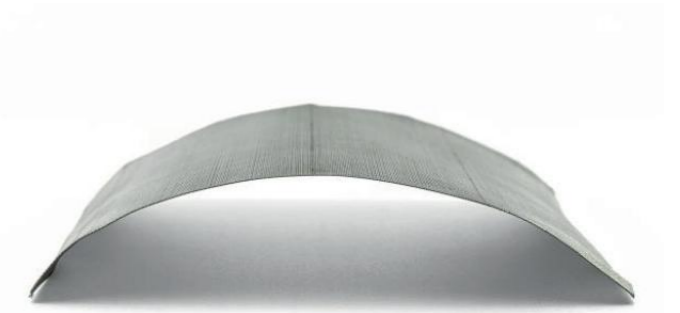


玻璃纤维介质具有均匀的孔隙结构，使其能够捕获和包含比纤维素更多的颗粒。它不容易受到结构操纵，并且不受脱落的影响，因此污垢会留在原地。因此，玻璃纤维过滤器被授予绝对评级，并被视为对一直在纤维素过滤器上运行的系统的升级。

Fibreglass media has a uniform pore structure that allows it to trap and contain more particles than cellulose. It is not susceptible to structural manipulation and is not subject to shedding so dirt stays in place. As a result, glass fibre filters are awarded an absolute rating and are seen as an upgrade to systems that have been running on cellulose filters.



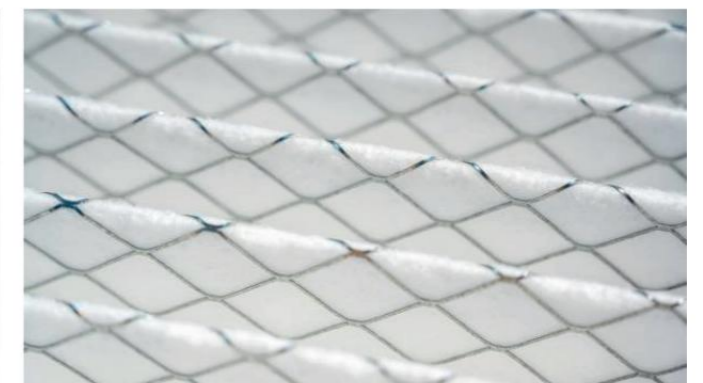
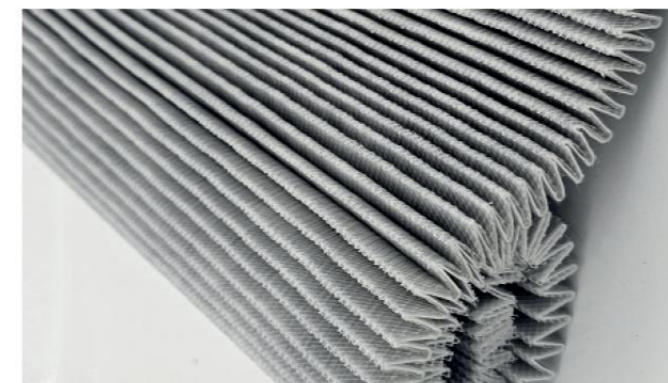
### 丝网滤材 wire mesh filter media



丝网过滤介质由不锈钢制成，具有绝对额定值，但它比纤维素更耐用，并且更能容纳颗粒物。丝网过滤器是耐火流体应用的理想选择，如高温调速器控制、钢厂液压和飞机地面支持设备。

Screen filter media is made of stainless steel and is absolutely rated, yet it is more durable than cellulose and holds particulate matter better. Screen filters are ideal for refractory fluid applications such as high temperature governor controls, steel mill hydraulics, and aircraft ground support equipment.

### 复合滤材 Composite filter material



凝聚过滤器旨在在不同阶段将两种流体彼此分离，同时过滤掉颗粒物。在各种行业中都很常见，聚结过滤器有两种类型：液-液体过滤器和液-气体过滤器，聚结过滤器可以将散落在石油和燃料中的大液滴和乳化水结合在一起。然后，这些大水滴可以很容易地从油流或燃料流中去除。合成聚结介质现在取代了经过处理的纸张介质，以获得卓越的可靠性。

Coalescing filters are designed to separate two fluids from each other at different stages while filtering out particulate matter. Common in a variety of industries, there are two types of coalescing filters: liquid-liquid filters and liquid-gas filters. Coalescing filters combine large liquid droplets and emulsified water that are dispersed in oil and fuel. These large droplets can then be easily removed from the oil or fuel stream. Synthetic agglomerated media now replaces treated paper media for superior reliability.



## 邦贸公司采用 BAMA FILTER Company adopts

美国原装进口滤材，孔径均匀，阻力低，容污量大。

德国进口复合滤材折叠机，增大滤芯有效过滤面积，保证滤材结合度。

耐油耐温环丙树脂胶粘接，牢固密封。

内部支撑骨架：骨架厚度 ≥ 1.5mm，螺旋焊接，直缝焊接。

端盖：ABS 端盖，尼龙端盖，热熔端盖，不锈钢端盖，注胶端盖

American original imported filter material, uniform pore size, low resistance, large dirt holding capacity.

Germany imported composite filter material folding machine, increase the effective filter area of the filter element, to ensure the combination of the filter material.

Oil and temperature resistant cyclopropylene resin adhesive bonding, firm sealing.

Internal support skeleton: skeleton thickness ≥ 1.5mm, spiral welding, straight seam welding.

End caps: ABS end caps, nylon end caps, hot melt end caps, stainless steel end caps, glue end caps.



## 行业应用 Industry applications



## HYDRAULIC FILTER HOUSING 液压过滤器

邦贸供应：吸油过滤器、回油过滤器、压力过滤器、中低压过滤器、高压过滤器、双联过滤器、大流量过滤器。

BAMA FILTER supplies: oil suction filter, oil return filter, pressure filter, medium and low pressure filter, high pressure filter, duplex filter, high flow filter.

壳体材质分为：铝铸件、铁铸件、不锈钢件、钢铸件等

工作介质：一般液压油、磷酸酯液压油、乳化液、水 - 乙二醇等

工作压力：低压 1.6MPa 中压 21MPa 高压 42MPa

用于保护液压系统中各元件，以滤除工作介质中的固体颗粒及胶状物质，有效控制工作中的污染度，并使元件正常工作。根据过滤等级要求选择合适的滤芯可以满足对清洁度的最高要求。

我们也可以根据客户使用场景定制生产非标过滤器

Shell materials: aluminium castings, iron castings, stainless steel parts, steel castings, etc.

Working medium: general hydraulic oil, phosphate ester hydraulic oil, emulsion, water - glycol, etc.

Working pressure: low pressure 1.6MPa medium pressure 21MPa high pressure 42MPa

Used to protect the various components of the hydraulic system to filter out solid particles and colloidal substances in the working medium, effectively controlling the degree of contamination in the work, and make the components work normally. According to the filtration level requirements to choose the right cartridge can meet the highest requirements for cleanliness.

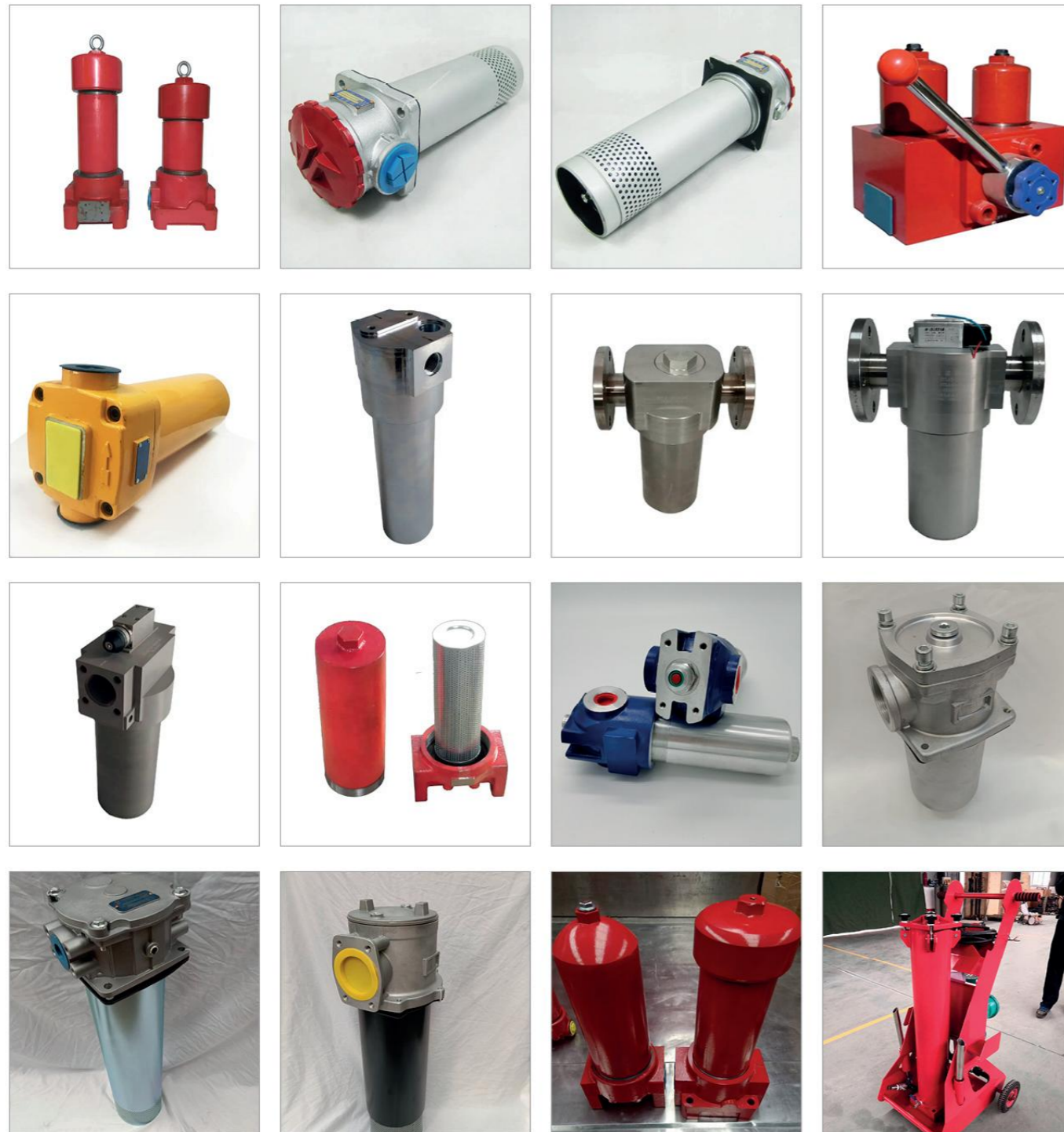
We can also customise the production of non-standard filters according to customer use scenarios.





# H

## HYDRAULIC FILTER HOUSING 液压过滤器



# V

## VACUUM PUMP FILTER ELEMENT 真空泵滤芯

邦贸供应真空泵过滤器：排气滤芯、油雾分离器、油雾过滤器

油雾分离器主要用来分离空气与油雾颗粒，是油润滑旋片式真空泵常用的一种过滤耗材，为了达到更好的过滤效果，我司销售均采用国外进口 HV 滤材制造的滤芯，过滤精度更佳，同时良好的过滤能力也可以平衡内外压力气流差，耐用，不冒烟！

Oil mist separator is mainly used to separate air and oil mist particles, is an oil lubricated rotary vane vacuum pumps commonly used as a filter consumables, in order to achieve better filtration effect, our sales are imported from abroad HV filter material manufactured cartridge, filtration accuracy is better, at the same time good filtration capacity can balance the inside and outside of the pressure difference between the pressure of the air flow, durability, no smoke!



### 交叉参考品牌 Cross-reference brands

- 邦贸 BAMA VS VS BECKER 邦贸 BAMA VS VS Rietschle
- 邦贸 BAMA VS ORION 邦贸 BAMA VS BUSCH
- 邦贸 BAMA VS LEYBOLD
- 邦贸 BAMA VS ULVAC
- 邦贸 BAMA VS Edwards



# V

## VACUUM PUMP FILTER ELEMENT 真空泵滤芯

### 产品介绍 Product Description

具有很高的真空度、最高可达 13pa  
 可以有效的抽除部分的水蒸气和油蒸汽、获得干净的真空  
 最为大容量的排气系统、减少电力消耗  
 具有很好的灵活性能、可以用在其他泵无法应用的领域中

High vacuum up to 13 pa.  
 Effectively removes part of the water and oil vapour to obtain a clean vacuum.  
 The highest capacity exhaust system, reducing power consumption.  
 Highly flexible and can be used in areas where other pumps cannot be used.

### 使用注意事项 Precautions for use

真空泵运行时的检查：使用真空泵油雾分离器压力表检测是否堵塞，当压力表读数位于红色区域，说明油雾分离器已堵塞，必须更换。如果无油雾分离器压力表，则油雾分离器的阻力由驱动电机电流的变化来测定，驱动电机消耗过的电流或真空泵的流量下降，说明油雾分离器已堵塞，必须更换。如果真空泵油雾分离器压力表指示的压力比通常低，或驱动电机消耗的电流比通常少，原因是有一个油雾分离器损坏，需要更换油雾分离器。如果排放的气体中含有油，原因是油雾分离器堵塞或损坏，须更换。真空泵油雾分离器不能彻底清洗干净，必须更换堵塞的油雾分离器。更换真空泵油雾分离器前请先关闭真空泵并切断电源，确保真空泵已通大气压，从油箱上打开排气口盖板，借助专用内六角扳手拆下排气过滤器，将装有密封圈的新的油雾分离器开口端安装在油箱内正确位置上。

Inspection when the vacuum pump is running: Use the vacuum pump oil mist separator pressure gauge to detect whether it is clogged or not, when the pressure gauge reading is located in the red area, it indicates that the oil mist separator is clogged and must be replaced. If there is no oil mist separator pressure gauge, the resistance of the oil mist separator is determined by the change of the drive motor current, the drive motor consumes too much current or the flow rate of the vacuum pump decreases, which indicates that the oil mist separator is clogged and must be replaced. If the pressure indicated by the vacuum pump oil mist separator pressure gauge is lower than usual or the drive motor consumes less current than usual, the reason is that one of the oil mist separators is damaged, and it is necessary to replace the oil mist separator. The oil mist separator needs to be replaced. If the discharge gas contains oil, the oil mist separator is clogged or damaged and must be replaced. The oil mist separator of the vacuum pump cannot be thoroughly cleaned and the clogged oil mist separator must be replaced. Before replacing the oil mist separator of the vacuum pump, switch off the vacuum pump and disconnect the power supply, make sure that the vacuum pump has been energised to atmospheric pressure, open the exhaust port cover from the tank, remove the exhaust filter with the help of the special inner six spanner, and install the open end of the new oil mist separator fitted with the sealing ring in the correct position in the oil tank.



# C

## COALESCING SEPARATION FILTER ELEMENT 聚结分离滤芯

固液分离—破乳—聚结—分离—吸附

聚结滤芯和分离滤芯数量比越大，聚结的效果越好，分离速度越快。

聚结 / 分离滤芯是由多种复合材料特殊工艺加工而成，具有亲水特性，它不仅能滤除介质中的机械杂质，而且还能通过破乳、聚结、使乳化状态的水从介质中分离出来、并聚结为较大的水滴，以利于进一步实现介质净化的滤芯。

Solid-liquid separation, emulsion breaking, agglomeration, separation and adsorption.

The larger the ratio of the number of agglomerated cartridge and separation cartridge, the better the effect of agglomeration and the faster the separation speed.

Agglomerated / separation cartridge is made of a variety of composite materials processed by a special process, with hydrophilic properties, it can not only filter out mechanical impurities in the medium, but also through the emulsion, agglomeration, so that the emulsified state of the water from the media to separate, and agglomerate into larger droplets, in order to further achieve the purification of the media cartridge.







# S

## STAINLESS STEEL FILTER 不锈钢滤芯

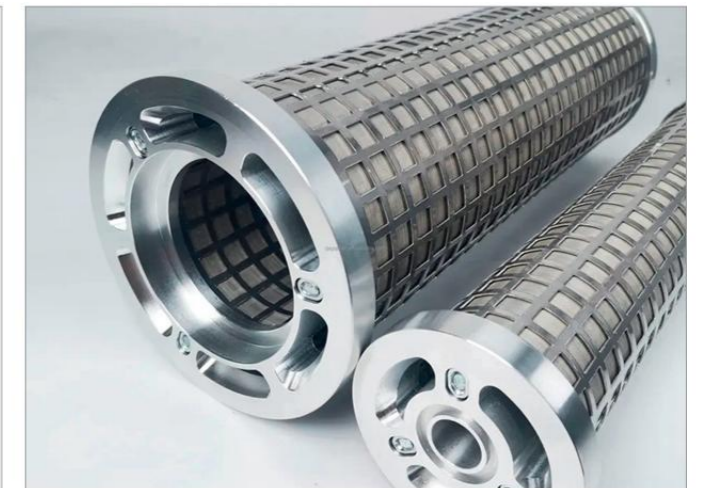
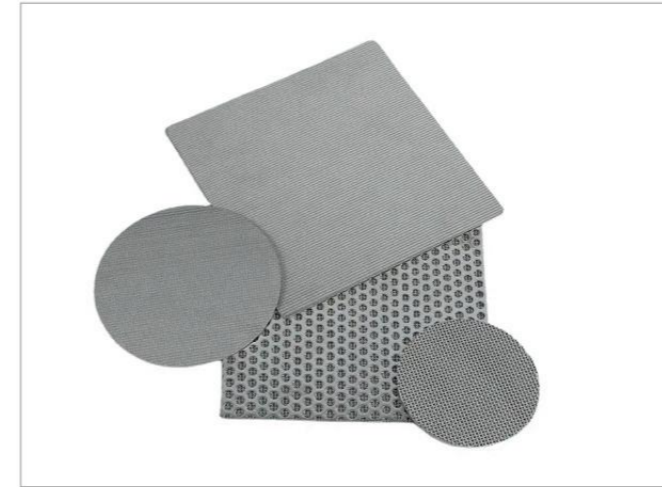
不锈钢滤芯，具有很好的良好的过滤性能、对 2-200um 的过滤粒度均可发挥均一的表面过滤性能，主滤材采用多层不锈钢烧结网，过滤精度为 0.5-200um，其外形尺寸可按用户要求加工。

Stainless steel filter element, with very good filtration performance, for 2-200um filtration particle size can play a uniform surface filtration performance, the main filter material using multi-layer stainless steel sintered wire mesh, filtration precision of 0.5-200um, its external dimensions can be processed according to user requirements.

### 不锈钢滤芯特性 Stainless steel cartridge characteristics

- 1、良好的过滤性能、对 2-200um 的过滤粒度均可发挥均一的表面过滤性能；
- 2、耐腐蚀性、耐热性、耐压性、耐磨性好；并可反复冲洗和使用寿命长。
- 3、不锈钢滤芯气孔均匀、精确的过滤精度；
- 4、不锈钢滤芯单位面积的流量大；
- 5、不锈钢滤芯适用低温、高温环境；
- 6、清洗之后可以再使用，免更换。

- 1, good filtration performance, the filtration particle size of 2-200um can play a uniform surface filtration performance;
- 2, corrosion resistance, heat resistance, pressure resistance, wear resistance; and can be repeatedly flushed and long service life.
- 3, stainless steel cartridge pore uniformity, precise filtration accuracy;
- 4, stainless steel cartridge flow rate per unit area;
- 5, stainless steel cartridge is suitable for low and high temperature environment;
- 6, after cleaning can be used again, free of replacement.



### 应用范围 Scope of application

1. 石油化工、油田管道过滤；
2. 加油设备、工程机械设备燃油过滤；
3. 水处理行业设备过滤；
4. 制药及食品加工领域；
5. 适用于电子、石油、化工、医药、食品等工业部门中的预处理和后处理系统上。对含悬浮杂质较低（小于 2~5mg/L）的水质进一步净化。

1. Petrochemical and oil field pipeline filtration;
2. Fuel filtration for refuelling equipment, engineering machinery and equipment;
3. Water treatment industry equipment filtration;
4. Pharmaceutical and food processing field;
5. Applicable to pre-treatment and post-treatment systems in electronics, petroleum, chemical, pharmaceutical, food and other industrial sectors. Further purification of water with low suspended impurities (less than 2~5mg/L).



# A

## AIR COMPRESSOR THREE FILTER 空压机三滤



空压机三滤主要包括：油气分离滤芯、机油滤芯、空气滤芯

AIR COMPRESSOR THREE FILTERS MAINLY INCLUDE: OIL AND GAS SEPARATION FILTER OIL FILTER AIR FILTER

油气分离滤芯：分离后气体含油量：3PPM w/w 初始压差：≤ 0.02MPa 更换压差：0.7MPa

油气分离使用了防腐蚀材料、精细的焊接工艺和最新的双面粘结剂的运用确保了分离器具有很高的机械强度、并且能在 120 摄氏度的高温下正常工作。

正常情况下、当油气混合物从分离器外部进入内部时、发生凝结效应、于是油得以回收、同时产生了清洁的空气。分离的使用寿命取决于很多因素：分离器的设计，常规的维护，油气分离的质量，为了确保分离的高效，我们必须安装可靠的密封件。

Oil and gas separation cartridge: oil content of separated gas: 3PPM w/w Initial pressure difference: ≤ 0.02MPa Replacement pressure difference: 0.7MPa

The use of corrosion-resistant materials, fine welding technology and the latest double-sided binder ensure that the separator has high mechanical strength and can work normally at a high temperature of 120 degrees Celsius.

Normally, when the oil-air mixture passes from the outside to the inside of the separator, a condensation effect occurs, whereby the oil is recovered and clean air is produced.

The service life of the separator depends on a number of factors: the design of the separator, regular maintenance, the quality of the oil/gas separation and to ensure efficient separation we must install reliable seals.



# D

## DUST FILTER 除尘过滤器



### 滤筒安装方式 Filter cartridge mounting type

锥形和圆形 圆柱 PU 密封安装 板式过滤器 PU 密封安装 三耳 / 四耳  
PU 密封安装 螺旋卡 PU 密封安装 布袋式过滤器 梅花盖 螺纹式

Conical and round Cylinder PU sealing installation Plate filter PU sealing installation Three/four lugs  
PU sealing installation Screw card PU sealing installation Plum cap Threaded

### 过滤材质 Filter material

木浆纤维纸、普通阻燃、纳米阻燃、覆膜阻燃、聚酯纤维防静电滤料 防油防水滤料拥有上百种的滤筒形式  
可以确保收到订单后快速发货

可协助客户选择最佳的滤筒以满足各种不同工况需求

wood pulp fibre paper, ordinary flame retardant, nano flame retardant, coated flame retardant, polyfibre Anti-static filter material Oil and waterproof filter material has hundreds of types of cartridges.

Ensure fast delivery upon receipt of order

We can assist customers in choosing the best cartridges to meet the needs of different working conditions.