

携手共赢 共创未来



河北圣翰液压机械有限公司

HYDRAULIC MACHINERY

圣翰液压

液压机械



河北圣翰液压机械有限公司
HEBEI SHENGHAN HYDRAULIC MACHINERY CO., LTD

地址：河北省宁晋县高速路口北行两公里
电话：0319-5803789 18531998999
网址：www.shenghanyeya.com
邮箱：871589789@qq.com



扫码关注微信公众号

公司简介 COMPANY PROFILE



河北圣翰液压机械有限公司始创于2009年，位于全国液压机械配件基地—河北·宁晋，系集生产制造、批发销售于一体的多元化液压公司。

依托于深厚的行业经验，我们始终在产品工艺上不断探索并向前迈进，现已配套于一众主机厂成为长期合作伙伴。

我公司主要生产液压油缸、动力单元。液压油缸产品有：水田平地机油缸、整地机油缸、打包机油缸、采棉机油缸、收割机油缸、环卫车油缸、叉车属具油缸、汽车尾板油缸、飞翼车油缸、碎石机油缸、矿用油缸.....液压产品配套于轿车、叉车、食品机械、飞翼系统成套、汽车尾板成套、车辆改装等广泛领域。其液压产品销售往全国20多个省、市、自治区、产品质量和公司信誉得到了客户的一致好评。我公司还可依据图纸定制生产。

动力单元产品有：尾板动力单元、飞翼动力单元、环卫车动力单元、扫雪车动力单元、升降平台动力单元、举升机动力单元、小金刚动力单元、立体车库动力单元及定制等...

我厂拥有先进产品测试设备，拥有雄厚技术力量。以保障出厂的每一个产品都能拥有卓越的性能，我们励精图治，将持续优化产品，使其能更好的应用，让用户少走弯路，并推动公司得以健康发展。我们追求真正解决客户的问题。做有灵魂的企业。

我公司完善的质量管理体系已通过ISO9001质量管理体系认证，我们将以优质的产品，不懈的创新精神，与社会各界携手共创辉煌未来。真诚期待与您的合作！



Hebei Shenghan Hydraulic Machinery Co., Ltd., founded in 2009, is located in Ningjin, Hebei, a national hydraulic machinery parts base. It is a diversified hydraulic company integrating production, manufacturing and wholesale sales.

Relying on our profound industry experience, we have always been exploring and moving forward in product technology, and now we have become a long-term partner in a number of main engine factories.

Our company mainly produces hydraulic cylinders and power units. Hydraulic oil cylinder products include: paddy land leveler oil cylinder, land leveler oil cylinder, baler oil cylinder, cotton harvester oil cylinder, harvester oil cylinder, sanitation truck oil cylinder, forklift accessory oil cylinder, automobile tail plate oil cylinder, flying wing truck oil cylinder, stone crusher oil cylinder, mining oil cylinder... Hydraulic products are matched in a wide range of fields such as car transport, forklift clamp, food machinery, flying wing system complete set, automobile tail plate complete set, and vehicle modification. Its hydraulic products have been sold to more than 20 provinces, municipalities and autonomous regions throughout the country. The product quality and the company's reputation have been unanimously praised by customers. Our company can also customize the production according to the drawings.

Power unit products include: tail plate power unit, flying wing power unit, sanitation vehicle power unit, snowplow power unit, lifting platform power unit, lifting power unit, small King Kong power unit, three-dimensional garage power unit and customization

Our factory has advanced product testing equipment and strong technical force. In order to ensure that every product delivered from the factory can have excellent performance, we will continue to optimize the product to make it better applied, so that users can avoid detours and promote the healthy development of the company. We seek to truly solve customers' problems. Be an enterprise with soul.

Our company's perfect quality management system has passed the ISO9001 quality management system certification. We will work with all walks of life to create a brilliant future with high-quality product quality and unremitting innovation spirit. Sincerely look forward to cooperating with you!



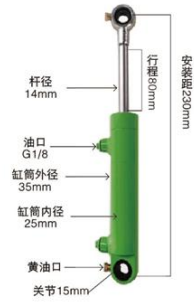
河北圣翰液压机械有限公司凭借自身专业雄厚的技术力量，赢得了政府主管部门、行业协会的高度肯定。

Hebei Shenghan Hydraulic Machinery Co., Ltd. has won the high affirmation of the competent government departments and trade associations by virtue of its professional and strong technical strength.

资质荣誉 QUALIFICATION HONOR



01 环卫清扫车



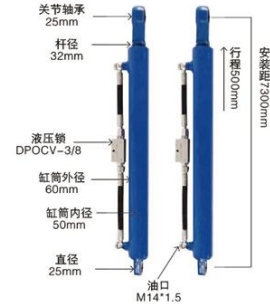
02 环卫车配套液压油缸



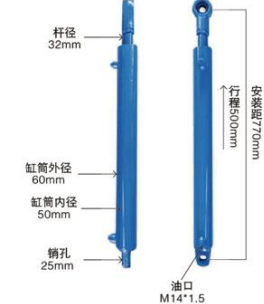
03 环卫车垃圾清扫车



10 HSG 液压油缸



11 HSG 液压油缸



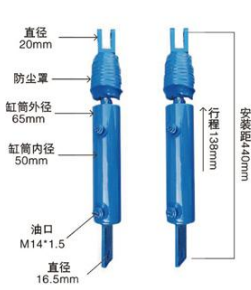
12 水田平地机液压油缸



04 工程液压油缸



05 HSG 液压油缸



06 HSG 液压油缸



13 沃得提升缸



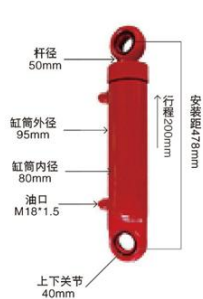
14 长行程液压油缸



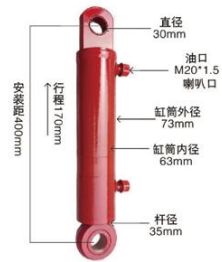
15 倾翻叉油缸90*50系列



07 双向液压油缸



08 翻转犁液压油缸



09 HSG 液压油缸



16 清障车配套油缸



17 叉车属具液压油缸



18 HSG 液压油缸



19 双出液压油缸



20 双向液压油缸



21 HSG 液压油缸



28 HSG 液压油缸



29 HSG 液压油缸



30 HSG 液压油缸



22 HSG 63*35系列



23 HSG 液压油缸



24 HSG 液压油缸



31 HSG 液压油缸



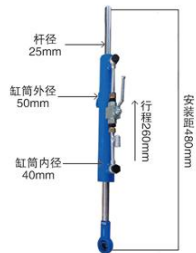
32 HSG 液压油缸



33 HSG 液压油缸



25 HSG 液压油缸



26 HSG 液压油缸



27 HSG 液压油缸



34 HSG 液压油缸



35 HSG 液压油缸



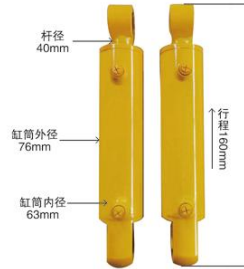
36 HSG 液压油缸



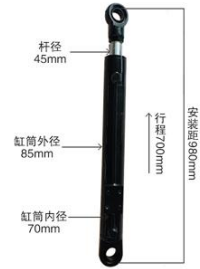
37 HSG 液压油缸



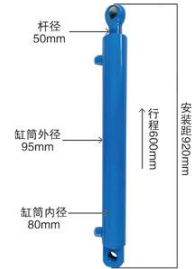
38 HSG 液压油缸



39 HSG 液压油缸



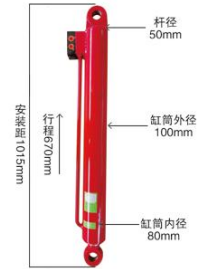
46 HSG 液压油缸



47 HSG 液压油缸



48 HSG 液压油缸



40 HSG 液压油缸



41 HSG 液压油缸



42 HSG 液压油缸



49 HSG 液压油缸



50 HSG 液压油缸



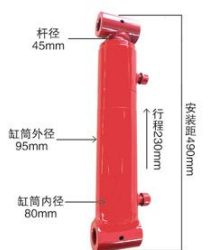
51 HSG 液压油缸



43 HSG 液压油缸



44 HSG 液压油缸



45 HSG 液压油缸



52 HSG 液压油缸



53 HSG 液压油缸



54 HSG 液压油缸



FOCUS ON HYDRAULIC CYLINDERS FOR 15 YEARS

专注液压油缸15年

汽车尾板系列油缸



1吨尾板缸



1.5吨尾板缸 耳环



1.5吨尾板缸 上叉



2吨尾板缸 耳环



2吨尾板缸 上叉



我们励精图治，深耕液压行业十五年，专业的液压技术团队均以持续创造更好的产品为前行目标，期待与您的合作，让我们为您打开省心之旅。

We have worked hard to cultivate the hydraulic industry for 15 years, and our professional hydraulic technical team is aiming to continuously create better products. We look forward to cooperating with you, so that we can open a journey of worry for you.

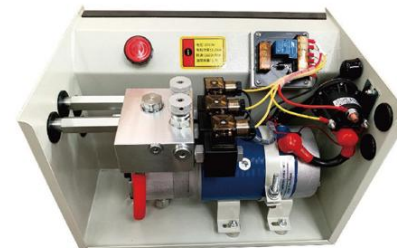
汽车尾板动力单元

POWER UNITS FOR VEHICLE TAILGATE

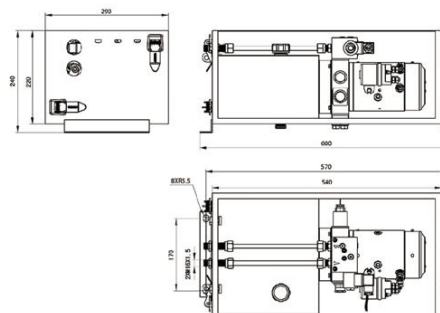
简介 General Description

此液压动力单元采用封闭式结构，用于卡车尾板的翻转和提升控制，下降速度由压力补偿流量阀自动调节。

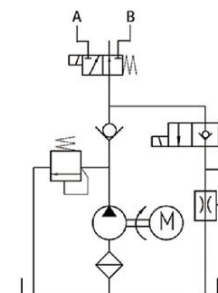
With a closed architecture, this power unit is used to control the opening/closing and lifting/lowering of tailgates of trucks. The pressure compensated flow control valve is to regulate the opening and lowering speed automatically.



外形尺寸图 Outline Dimension



系统工作原理 Hydraulic Circuit Diagram



型号规格说明 Model Specifications

Model 型号	Motor Volt 电机电压	Motor power 电机功率	Rated Speed 名义转速	Displacement 油泵排量	System pressure 溢流阀压力	Tank Capacity 油箱容量
SH5-E2.5D2A70AWUJABT1	DC24V	2KW	2500rpm	2.5mL/r	16MPa	11L

说明: 如需不同流量的泵、压力、电机功率等系统参数，请查看液压动力单元型号说明。

Remark: If you need different flow pump, pressure, motor power and other system parameters, please check the hydraulic power unit model description.

注意事项 Special Notes

1. 此动力单元不可连续运转(1分钟ON, 9分钟OFF), 可重复工作。
2. 按装前必须保证油缸、油管、接头等液压元件清洁无任何杂质粘附。
3. 液压油粘度应为15-68CST, 应清洁无杂质, 推荐使用N46号液压油。
4. 系统使用第一个100小时后, 应更换液压油, 以后每3000小时更换一次液压油。
5. 本液压动力单元适用于水平安装。

1. The power unit is of S3 duty, which can only work intermittently and repeatedly, i.e., 1 minute on and 9 minutes off.
2. Clean all the hydraulic parts concerned before mounting the power unit.
3. Viscosity of the hydraulic oil should be 15-68 cst, which should also be clean and free of impurities. N46 hydraulic oil is recommended.
4. Oil changing is required after the initial 100 operation hours, afterwards once every 3000 hours.
5. The power unit should be mounted horizontally.

翼展车动力单元

WINGSPAN VEHICLE POWER UNIT

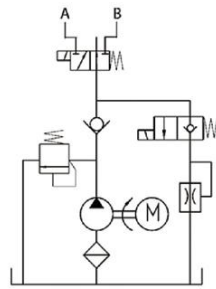
简介 General Description

此液压动力单元采用封闭式结构，用于卡车尾板的翻转和提升控制，下降速度由压力补偿流量阀自动调节。

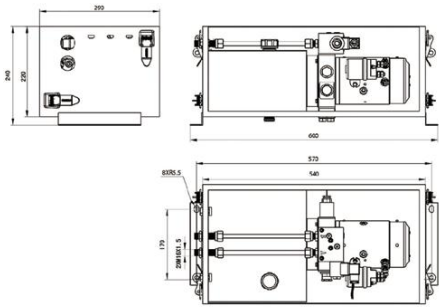
With a closed architecture, this power unit is used to control the opening/closing and lifting/lowering of tailgates of trucks. The pressure compensated flow control valve is to regulate the opening and lowering speed auto matically.



系统工作原理 Hydraulic Circuit Diagram



外形尺寸图 Outline Dimension



型号规格说明 Model Specifications

Model 型号	Motor Volt 电机电压	Motor power 电机功率	Rated Speed 名义转速	Displacement 油泵排量	System pressure 溢流阀压力	Tank Capacity 油箱容量
SH5-E2.5D2A70AWUJABT1	DC24V	2KW	2500rpm	2.5mL/r	16MPa	11L

说明: 如需不同流量的泵、压力、电机功率等系统参数, 请查看液压动力单元型号说明。

Remark: If you need different flow pump, pressure, motor power and other system parameters, please check the hydraulic power unit model description.

注意事项 Special Notes

1. 此动力单元不可连续运转(1分钟ON, 9分钟OFF), 可重复工作。
2. 按装前必须保证油缸、油管、接头等液压元件清洁无任何杂质粘附。
3. 液压油粘度应为15-68CST, 应清洁无杂质, 推荐使用N46号液压油。
4. 系统使用第一个100小时后, 应更换液压油, 以后每3000小时更换一次液压油。
5. 本液压动力单元适用于水平安装。

1. The power unit is of S3 duty, which can only work intermittently and repeatedly, i.e., 1 minute on and 9 minutes off.
2. Clean all the hydraulic parts concerned before mounting the power unit.
3. Viscosity of the hydraulic oil should be 15-68 cst, which should also be clean and free of impurities. N46 hydraulic oil is recommended.
4. Oil changing is required after the initial 100 operation hours, afterwards once every 3000 hours.
5. The power unit should be mounted horizontally.

液压动力机械 Hydraulic power machinery

河北圣翰 / 动力单元

专业技术提供整套液压方案
Professional technology to provide a complete hydraulic solution

6 圣翰 - 液动力单元系列 大优势

- 噪音低
- 运行平稳
- 效率高
- 无外泄漏
- 性能稳定
- 使用寿命长



房车改装专用动力单元/RV retrofit special power unit



飞翼车带手动泵动力单元/Flying wing vehicle with hand pump power unit

- 1 优良材质
采用优良材质制作, 质量过关, 不易生锈。
- 2 性能稳定
产品经过优化设计, 具有运行稳定、使用方便的特点。
- 3 使用寿命长
结构合理紧凑, 少占面积和空间, 方便安装, 使用寿命长。
- 4 符合质量标准
各项指标测试合格方准予出厂。

双作用动力单元

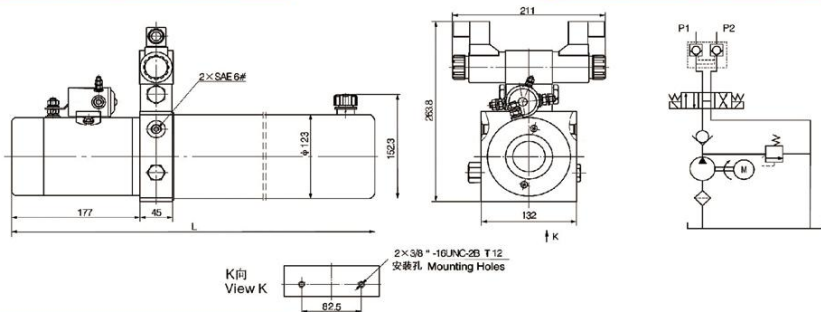
DOUBLE ACTING POWER UNITS

简介 General Description

此动力单元由高压齿轮泵、直流电机、多用集成块、各式液阀、油箱等零部件有机结合为一体，性能稳定，结构紧凑，广泛应用于汽车、园林机械、机床、物流设备等。

This power unit consists of high pressure gear pump, DC motor, multifunctional manifold, valves, tank, etc. It features stable performance and compact structure, and can be widely used in automotive, garden machineries, machine tools, logistics equipments etc.

外形尺寸图 Outline Dimension



系统工作原理 Hydraulic Circuit Diagram

型号规格说明 Model Specifications

Model 型号	Motor Volt 电机电压	Motor power 电机功率	Rated Speed 名义转速	Displacement 油泵排量	System pressure 溢流阀压力	Tank Capacity 油箱容量	L(mm)
SH-F2.1A1W209/S	12VDC	1.5KW	2500rpm	2.1mL/r	20MPa	3L	567
SH-F2.5B2A209/S	24VDC	2.0KW		2.5mL/r	20MPa	5L	472
SH-F2.7B3G209/LBAEC1	220VAC	1.5KW	1400rpm	2.7mL/r	22MPa	6L	642
SH-F3.2E3G209/LBCEC1				3.2mL/r	20MPa	12L	692
SH-F2.5F3H209/LCCEC1		2.2KW	2800rpm	2.5mL/r	18MPa	14L	665
SH-E3.2G3H209/LCCEC1				3.2mL/r	15MPa	16L	597
SH-D4.2G3H209/LCCEC1	4.2mL/r			10MPa	16L	597	
SH-F2.7H4I209/LCCEC1	380VAC	3.0KW		2.7mL/r	20MPa	20L	930
SH-F3.2I4I209/LCCEC1			3.2mL/r	18MPa	22L	1015	
SH-E3.7J4I209/LCCEC1			3.7mL/r	16MPa	25L	1100	

说明：如需不同流量的泵、压力、电机功率等系统参数，请查看液压力单元型号说明。

Remark: If you need different flow pump, pressure, motor power and other system parameters, please check the hydraulic power unit model description.

注意事项 Special Notes

1. 此动力单元为S3工作制，不可连续运转，30秒开、270秒停。
2. 按装前必须保证油缸、油管、接头等液压元件清洁无任何杂质粘附。
3. 液压油粘度应为15-68CST，应清洁无杂质，推荐使用N46号液压油。
4. 系统使用第一个100小时时，应更换液压油，以后每3000小时更换一次液压油。
5. 本液压力单元适用于水平安装。

1. The duty of this power unit is S3, i.e., 30 seconds on and 270 seconds off.
2. Clean all the hydraulic parts concerned before mounting the power unit.
3. Viscosity of the hydraulic oil should be 15-68 cst, which should also be clean and free of impurities. N46 hydraulic oil is recommended.
4. Change the oil after the first 100 hours of running the power unit, then change the oil every 3000 hours.
5. The power unit should be mounted horizontally.

液压动力机械 Hydraulic power machinery

河北圣翰 / 动力单元

专业技术提供整套液压方案

Professional technology to provide a complete hydraulic solution

6 大优势

圣翰 - 液压力单元系列

- 噪音低
- 运行平稳
- 效率高
- 无外泄漏
- 性能稳定
- 使用寿命长



植保机专用动力单元/Special power unit for plant protection machine



禽畜车垂直尾板专用动力单元/Special power unit for vertical tailplate of livestock vehicle

1 优良材质

采用优良材质制作，质量过关，不易生锈。

2 性能稳定

产品经过优化设计，具有运行稳定、使用方便的特点。

3 使用寿命长

结构合理紧凑，少占面积和空间，方便安装，使用寿命长。

4 符合质量标准

各项指标测试合格方准予出厂。

堆高车动力单元 FORK LIFT POWER UNITS

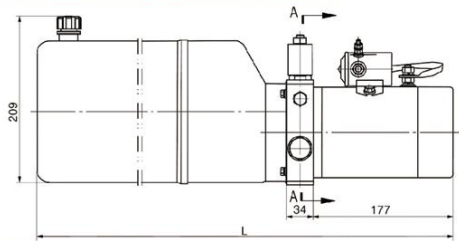
简介 General Description

此液压动力单元由高压齿轮油泵、直流电机、多用集成块、液压阀、油箱等零部件有机结合为一体，广泛应用于堆高车、升降平台。电磁卸荷阀卸荷实现回油，下降速度由可调节节流阀控制，备用手动卸荷阀用于停电时下降。

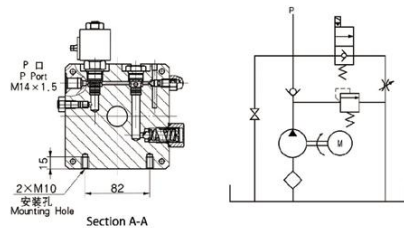
Consisting of high pressure gear pump, DC motor, multi-functional manifold, valves and tank, this power unit has been widely used in the industry of logistic devices such as fork lift, mini lift table and scissors lift. The lowering movement is controlled by the solenoid valve with the lower speed controlled by adjustable throttle valve. The needle release valve is used for lowering movement in case of power failure.



外形尺寸图 Outline Dimension



系统工作原理 Hydraulic Circuit Diagram



型号规格说明 Model Specifications

Model 型号	Motor Volt 电机电压	Motor power 电机功率	Rated Speed 名义转速	Displacement 油泵排量	System pressure 溢流阀压力	Tank Capacity 油箱容量	L(mm)
SH-F1.2A1W2/WUAAG1	12VDC	1.5KW	2500rpm	1.2mL/r	20MPa	3.5L	411
SH-F1.6B1W2/WUAAG1				1.6mL/r		5.0L	461
SH-F2.1B1W2/WUAAG1				2.1mL/r		5.0L	461
SH-F2.1B2A2/WUABG1				2.1mL/r		6.0L	511
SH-F2.5C2 A2/WUABG1	24VDC	2.0KW	2.5mL/r	8.0L		581	
SH-F2.7C2A2/W UABG1			2.7mL/r	8.0L		581	

说明: 1.如需不同流量的泵、压力、电机功率等系统参数,请查看液压动力单元型号说明。2.如需手动应急放油装置,请在订货时说明。

Remark: 1. If you need different flow pump, pressure, motor power and other system parameters, please check the hydraulic power unit model description. 2. If you need manual emergency oil release device, please specify when ordering.

注意事项 Special Notes

- 1.此动力单元为S3工作制,不可连续运转,30秒开、270秒停。
- 2.按装前必须保证油缸、油管、接头等液压元件清洁无任何杂质粘附。
- 3.液压油粘度应为15-68CST,应清洁无杂质,推荐使用N46号液压油。
- 4.系统使用第一个100小时后,应更换液压油,以后每3000小时更换一次液压油。
- 5.本液压动力单元适用于水平安装。

1. The duty of this power unit is S3, i.e., 30 seconds on and 270 seconds off.
2. Clean all the hydraulic parts concerned before mounting the power unit.
3. Viscosity of the hydraulic oil should be 15-68 cst, which should also be clean and free of impurities. N46 hydraulic oil is recommended.
4. Oil changing is required after the initial 100 operation hours, afterwards once every 3000 hours.
5. The power unit should be mounted horizontally.

液压动力机械 Hydraulic power machinery

河北圣翰 / 动力单元

专业技术提供整套液压方案

Professional technology to provide a complete hydraulic solution

6大优势

圣翰-液压力单元系列

- 噪音低
- 运行平稳
- 效率高
- 无外泄漏
- 性能稳定
- 使用寿命长



卸粮筒专用动力单元/Special power unit for unloading grain drum



液压换向风扇专用动力单元/Special power unit for hydraulic reversing fan

- 1 优良材质**
采用优良材质制作,质量过关,不易生锈。
- 2 性能稳定**
产品经过优化设计,具有运行稳定、使用方便的特点。
- 3 使用寿命长**
结构合理紧凑,少占面积和空间,方便安装,使用寿命长。
- 4 符合质量标准**
各项指标测试合格方准予出厂。

升降平台动力单元

LIFT TABLE POWER UNITS

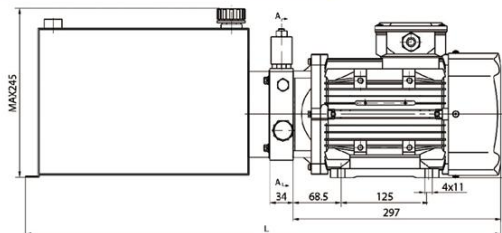
简介 General Description

此液压动力单元专为大型升降平台设计,由高压齿轮油泵、交流电机、多用集成块、液压阀、油箱等零部件有机结合为一体。升降平台的下降由电磁卸荷阀卸荷实现,下降速度由可调节节流阀控制。

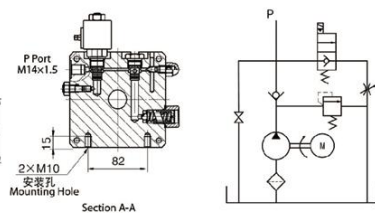
This power unit is designed exclusively for large sized lift table, which consists of high pressure gear pump, AC motor, multi-functional manifold, valves, tank, ect. The lowering movement is activated by the solenoid valve with the speed controlled by the adjustable throttle valve.



外形尺寸图 Outline Dimension



系统工作原理 Hydraulic Circuit Diagram



型号规格说明 Model Specifications

Model 型号	Motor Volt 电机电压	Motor power 电机功率	Rated Speed 名义转速	Displacement 油泵排量	System pressure 溢流阀压力	Tank Capacity 油箱容量	L(mm)
SH5-F2.5E3H2/LCCEG1	220VAC	2.2KW	2800rpm	2.5mL/r	18MPa	12L	677
SH5-E3.2F3H2/LCCEG1				3.2mL/r	14MPa	14L	727
SH5-D3.7G3H2/LCCBG1				3.7mL/r	12MPa	16L	777
SH5-E3.7G4I2/LCCEG1	380VAC	3.0KW		3.7mL/r	16MPa	16L	777
SH5-E4.2H4I2/LCCEG1				4.2mL/r	15MPa	20L	877
SH5-D5.0J4I2/LCCEG1				5.0mL/r	12MPa	25L	1002

说明:1.如需不同流量的泵、压力、电机功率等系统参数,请查看液压力单元型号说明。2.如需订购CSA或UL认证,60HZ的动力单元请在订购时说明。

Remark: 1. If you need different flow pump, pressure, motor power and other system parameters, please check the hydraulic power unit model description. 2. If you need to order CSA or UL certification, 60HZ power unit, please specify at the time of ordering.

注意事项 Special Notes

- 1.此动力单元不可连续运转(1分钟ON.9分钟OFF).可重复工作。
- 2.按装前必须保证油缸、油管、接头等液压元件清洁无任何杂质粘附。
- 3.液压力油粘度应为15-68CST,应清洁无杂质,推荐使用N46号液压力油。
- 4.系统使用第一个100小时,应更换液压力油。以后每3000小时更换一次液压力油。
- 5.本液压力单元适用于水平安装。

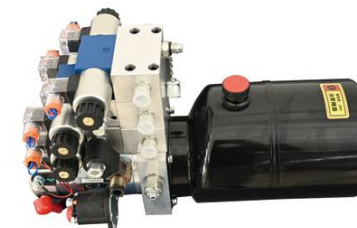
1. The power unit is of S3 duty, which can only be worked intermittently, i.e., 1 minute on and 9 minutes off.
2. Clean all the hydraulic parts concerned before mounting the power unit.
3. Viscosity of the hydraulic oil should be 15-68 cst, which should also be clean and free of impurities. N46 hydraulic oil is recommended.
4. Oil changing is required after the initial 100 operation hours, afterwards once every 3000 hours.
5. The power unit should be mounted horizontally.

液压动力机械 Hydraulic power machinery

河北圣翰 / 动力单元

专业技术提供整套液压方案

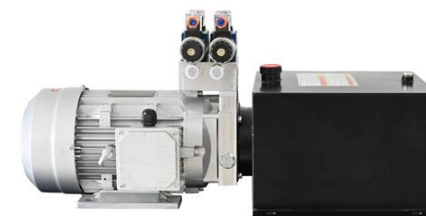
Professional technology to provide a complete hydraulic solution



扫雪车专用动力单元/Snowplow special power unit

6 圣翰-液压力单元系列 大优势

- 噪音低
- 运行平稳
- 效率高
- 无外泄漏
- 性能稳定
- 使用寿命长



扒谷机专用动力单元/Special power unit for grilling machine



直流双向八路动力单元/DC bidirectional eight way power unit

1 优良材质

采用优良材质制作,质量过关,不易生锈。

2 性能稳定

产品经过优化设计,具有运行稳定、使用方便的特点。

3 使用寿命长

结构合理紧凑,少占面积和空间,方便安装,使用寿命长。

4 符合质量标准

各项指标测试合格方准出厂。

动力单元系列产品

托盘车动力单元

PALLET TRUCK POWER UNITS

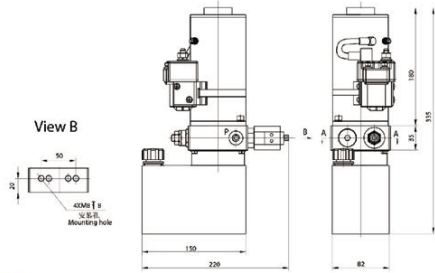
简介 General Description

此液压微型动力单元由高压齿轮油泵、低噪音直流电机、多用集成块、液阀、油箱等零部件有机结合为一体。通常用作托盘车、轻型堆高车的动力源。电磁卸荷阀卸荷实现回油，下降速度由内置性平衡阀控制。

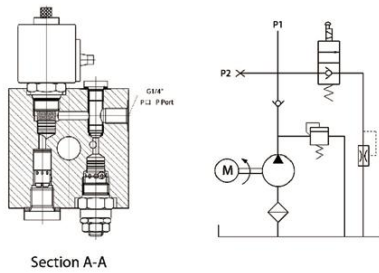
Consisting of high pressure gear pump, Low noise DC motor, multifunctional manifold, valves, tank, ect. This power unit can be widely used in the industry of logistic devices such as minifork lift ect. The lowering movement is controlled by the solenoid valve with the speed controlled by the balance valve.



外形尺寸图 Outline Dimension



系统工作原理 Hydraulic Circuit Diagram



型号规格说明 Model Specifications

Model 型号	Motor Volt 电机电压	Motor power 电机功率	Rated Speed 名义转速	Displacement 油泵排量	System pressure 溢流阀压力	Tank Capacity 油箱容量	L(mm)
SH5-E0.50W1T2/VUSAP1	DC24V	0.8KW	3500rpm	0.50mL/r	16.0MPa	1.0L	307
SH5-E0.63W1T2/VUSAP1				0.63mL/r		1.5L	337
SH5-E0.50Y2T2/VUSBP1				0.50mL/r			
SH5-E0.63Y2T2/VUSBP1				0.63mL/r			
SH5-E0.75V2T2/VUSIP2				0.75mL/r		16.5MPa	1.0L

说明:1如需不同流量的泵压力电机功率等系统参数,请查看波压动力单元型号说明。2.如需手动应急放油装置,请在订货时说明。

Remark: 1 if you need different flow pump pressure motor power and other system parameters. Please refer to the model description of the wave pressure power unit. 2. Manual emergency oil release, if required. Please specify when you place an order.

注意事项 Special Notes

- 1.此动力单元不可连续运转(1分钟ON,9分钟OFF),可重复工作。
- 2.按装前必须保证油缸、油管、接头等液压元件清洁无任何杂质粘附。
- 3.液压油粘度应为15-68CST,应清洁无杂质,推荐使用N46号液压油。
- 4.本液压动力单元适用于立式安装。
- 5.首次启动运行系统后,应立即检查油箱中的油量是否充足。
- 6.系统使用第一个100小时,应更换液压油,以后每3000小时更换一次液压油。

- 1.The power unit is of S3 duty, which can only work intermittently and repeatedly,ie., 1minute on and 9 minutes off.
- 2.Clean all the hydraulic parts concerned before mounting the power unit.
- 3.Viscosity of the hydraulic oil should be 15-68 cst,which should also be clean and free of impurities.N46 hydraulic oil is recommended.
- 4.This power unit should be mounted vertically.
- 5.Check the oil level in the tank after the first star of the power unit.
- 6.Oil changing is required after the initial 100 operation hours, afterwards once every 3000 hours.

01 直流单作用一路



02 直流双作用一路



03 直流双作用一路



04 直流双作用两路



05 侧翻直流电机泵组



06 直流PT口动力单元



07 单相PT口动力单元



08 交流单作用一路



09 交流单作用一路



动力单元系列产品

电机系列产品

10 双作用五路



11 双作用六路



12 双作用单飞翼



22 直流系列电机



23 直流系列电机



24 直流系列电机



13 尾板三键动力单元



14 尾板四键动力单元



15 尾板四键动力单元



25 直流系列电机



26 直流系列电机



27 直流系列电机



16 翼展单作用双飞



17 翼展单作用双飞



18 翼展双作用双飞



28 直流系列电机



29 直流系列电机



30 直流系列电机



19 小金刚动力单元



20 防爆动力单元



21 防爆动力单元



31 交流系列电机



32 交流系列电机



33 交流系列电机



控制器系列产品

配件系列产品

34 线控盒



35 线控箱



36 弹簧线手柄



46 同步马达 一托二



47 同步马达 一托四



48 同步马达 一托六



37 弹簧线



38 语音播报喇叭



39 尾板控制器



49 5kw电机泵组



50 3kw电机泵组



51 高空作业车电机泵组



40 飞翼遥控器



41 两键遥控器



42 三路遥控器



52 直柄继电器



53 弯柄继电器



54 K泵 1.1/1.6/2.5/3.7



43 四路遥控器



44 五路遥控器



45 六路遥控器



55 尾板油泵



56 油路块



57 汽车尾板成套液压油管





全方位服务 合作共赢
Omnidirectional service
Cooperation and win-win

