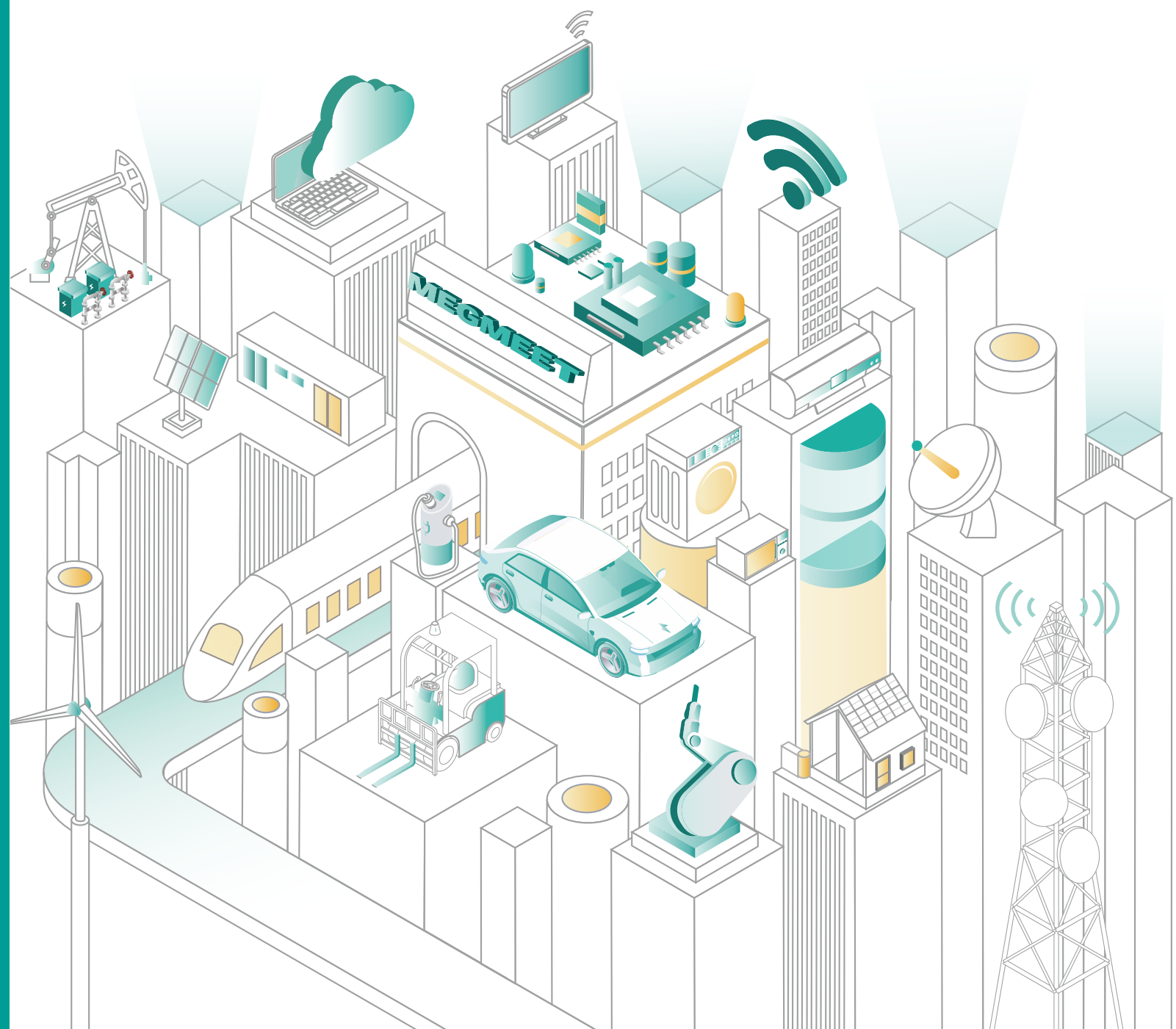


全球专业的电气自动化领域
解决方案提供商

Global Leading Solution Provider
in Electrical Automation



深圳麦格米特电气股份有限公司

SHENZHEN MEGMEET ELECTRICAL CO., LTD.

地址：深圳市南山区科技园北区朗山路紫光信息港B座5楼
Add: 5th Floor, Block B, Unisplendour Information Harbor, Langshan Rd.,
Science & Technology Park, Nanshan District, Shenzhen, 518057, China

地址：深圳市南山区学府路63号高新区联合总部大厦34楼
Add: 34th Floor, High-tech Zone Union Tower, No.63 Xuefu Road, Nanshan
District, Shenzhen, 518057, China



官网



微信公众号



微信视频号



小程序

版本：202409

本手册技术参数最终解释权归麦格米特所有

Megmeet reserves the right to modify the technical parameters and appearance of the products in this catalogue without prior advice to the users.

“Megmeet
Everywhere
麦米电气无处不在”



关于麦米电气

ABOUT MEGMEET

深圳麦格米特电气股份有限公司(股票代码:002851)是电气自动化领域硬件和软件研发、生产、销售与服务的一站式解决方案提供商,二十多年砥砺前行,形成以数字化电源控制技术、系统控制与通讯技术、功率变换硬件技术为核心的平台,衍生出电源产品、工业自动化、新能源&轨道交通、智能装备、智能家电电控、精密连接等六大业务领域,同时在全球各地建立研发中心、生产制造中心以及市场服务中心。

作为全球专业的电气自动化领域解决方案提供商,麦米电气始终坚持技术领先、工艺精湛、品质高端、服务一流的经营方针,致力于人类电能使用更加高效、生存环境更加洁净、生产效率持续进步,以人类生活日益美好为重任,打造全球电气自动化行业标杆!

Shenzhen Megmeet Electrical Co., Ltd. (stock ticker: 002851.SZ) is a one-stop solution provider in the field of electrical automation, integrating software and hardware R&D, production, sales and services. With more than 20 years of experience, Megmeet has formed core technologies of digital power control, system control and communication, and hardware power conversion. Megmeet sets foot in six core business areas: Industrial Automation, New Energy Transportation, Intelligent Equipment, Power Solutions, Home Appliance Control Solutions, and Precision Connection. Megmeet has established R&D, manufacturing, marketing and service centers worldwide.

As a global professional solution provider in electrical automation, Megmeet consistently embodies the company's ethos of "latest technology, lean technique, high-end quality and first-class service". To ensure a better living environment for all human beings, Megmeet will continue to improve the efficient use of electricity, promote clean energy and maximize production efficiency. Megmeet is determined to set the benchmark for the electrical automation industry.

业绩持续稳定增长 Steady Performance Growth



7800+
公司员工
Total Employees

2800+
研发人员
R&D Staff

6:4
员工男女比例
Gender Diversity Men VS Women

1800+
专利及著作权
No. of Patents & IP Rights

10
研发中心
R&D Centers

8
制造基地
Manufacturing Bases

* 数据截止至2024年6月
Data up to June 2024

发展历程

MILESTONES

2003年

麦米电气成立, 聚焦平板显示电源领域, 工业显示进入新时代

MEGMEET was established, with a focus on flat panel display power supply, stimulating the world into a new era of vision



2007年

进入工业自动化和工业电源领域

Entered the field of industrial automation and industrial power supply



2011年

开始新能源汽车核心零部件研发

Started the R&D of core components for electric vehicles



2019年

国际化进一步推进, 相继在国内外设立研究所与生产基地

Global footprint expanded, with R&D and Manufacturing Centers established both domestically and internationally



2017年

深圳中小板上市, 股票代码002851

IPO: Shenzhen SME Board (Stock Ticker: 002851.SZ)



2014年

建立湖南株洲全球制造基地, 赋能全球客户。规模进入智能家电和工业智能焊机领域

Established our Global Manufacturing Center, and entered the market of smart home control and industrial welding machine



2020年

上榜福布斯亚太区中小上市企业TOP200

Listed as Top 200 Small & Medium Companies by Forbes Asia Pacific



2022年

整合成立六大业务板块 布局精密连接业务

Formed MEGMEET's six core business groups



2023年

位居2023全球电源供应商销量第7名(来自《MTC报告》) 全球化提质加速, 长沙全球研发中心启用, 泰国新生产基地动工

Listed as No.7 in 2023 global power supply sales by MTC. Expanded global footprint: Changsha Global R&D Center & Thailand Manufacturing Base



业务领域

BUSINESS AREAS

6大
事业群
Six Core
Business Groups

01
电源产品事业群
Power Solutions



06
精密连接事业群
Precision Connection



02
工业自动化事业群
Industrial Automation



05
智能装备事业群
Intelligent Equipment



03
新能源&轨道交通事业群
New Energy Transportation



04
智能家电电控事业群
Smart Home Control Solutions



主要产品

MAIN PRODUCTS



电源产品

Power Solutions

- 通信电源
Telecom Power
- 服务器电源
Server Power
- 电力电源
Electric Power
- 医疗电源
Medical Power
- 显示电源
Display Power
- LED 电源
LED Power
- 激光电源
Laser Power
- OA 电源
OA Power
- 工控电源
Flat Panel Power
- 移动储能双向逆变器
Bi-directional Inverters for Portable Power
- 光储充解决方案
Solar & BESS & EV Charge Solution



智能装备

Intelligent Equipment

- 智能数字化焊机
Intelligent Welding
- 工业微波设备
Industrial Microwave
- 多晶硅水淬设备
Polysilicon Water Quenching Equipment
- 全自动洗车机
Automatic Car Washing Machine
- 潜油螺杆泵智能采油系统
Electric Submersible-Progressing Cavity Pump



工业自动化

Industrial Automation

- 变频器
Variable Frequency Drive
- 直线电机
Linear Motors
- 伺服系统
Servo System
- 内啮合齿轮泵
Internal Gear Pump
- 控制系统
Control System
- 工业物联网 IoT
IoT Solution
- 编码器
Encoder
- 电梯一体化控制器
Elevator Controller



智能家电电控

Smart Home Control Solutions

- 家用/商用空调控制器
Residential & Commercial A/C Controller
- 热泵/暖风机控制器
Heat Pump Controller
- 车载空调控制器
Vehicle A/C Controller
- 太阳能空调控制器
Solar A/C Controller
- 微型压缩机控制器
Mini Compressor Controller
- 冰箱/洗(干)衣机控制器
Refrigerator & Washer/Dryer Controller
- 家用/工业微波电源
Residential & Industrial Microwave
- 智能卫浴整机及部件
Smart Bidet
- 射频解冻回鲜设备
RF Thawing System



新能源&轨道交通

New Energy Transportation

- 集成充电系统
OBC & DC-DC
- 电机控制器
Motor Control Unit
- 电动压缩机
E-Compressor
- 分布式驱动
TV EDU
- 轨交空调控制器
Railway A/C Controller
- 轨交变频器
Railway VFD
- 轻型电动车控制器
Light Electric Vehicle Controller
- 工程车辆控制器
Construction Machinery Controller
- 热管理系统
Thermal Mgmt. System
- 多合一高压集成驱动器
Power Electronic Unit (2-In-1, 3-In-1)
- 全主动式液压悬架系统
Intelligent Active Hydraulic Suspension (I-AHS)



精密连接

Precision Connection

- FFC 柔性扁平排线
FFC
- FPC
FPC
- 同轴线
Coaxial Cable
- CCS
CCS
- 利兹线
Litz Wire
- PEEK 线
Peek Wire

研发创新

R&D INNOVATION

7.71亿元

2023年研发投入
R&D Investment of
FY2023 \$106.5 Million USD

>11%

研发投入
R&D Investment

36%

研发人员占比
R&D Staff Ratio

1800+件

专利技术
1800+ Patents & IP Rights

23个

国家&国际标准
National & International
Industry Standards

10个

全球研发中心
10 Global R&D Centers

认证情况 Certification

功能与性能实验室、EMC实验室、环境与可靠性实验室等专业实验室，通过**CNAS、TUV、UL-WTDP、UL-CTF**等资质认证，测试结果全球互认。

MEGMEET's testing capabilities and management system have been certified by CNAS, TUV, UL-WTDP, & UL-CTF. MEGMEET's test results are recognized globally.



专业的测试平台 Professional Testing Platforms

拥有全球一流的实验室设备，构建规范化、专业化、自动化、智能化的测试平台，有效保证测试结果的准确性与稳定性。

Our laboratories are equipped with world-class testing equipment, enabling us to establish a standardized, professional, automated, and intelligent testing platform that effectively ensures the accuracy and stability of our testing results.



环境与可靠性实验室
Environmental and Reliability
Testing Laboratory

功能与性能实验室
Functional and Performance
Testing Laboratory

EMC实验室
EMC Testing Laboratory

其他专业实验室
Other Specialized Laboratory

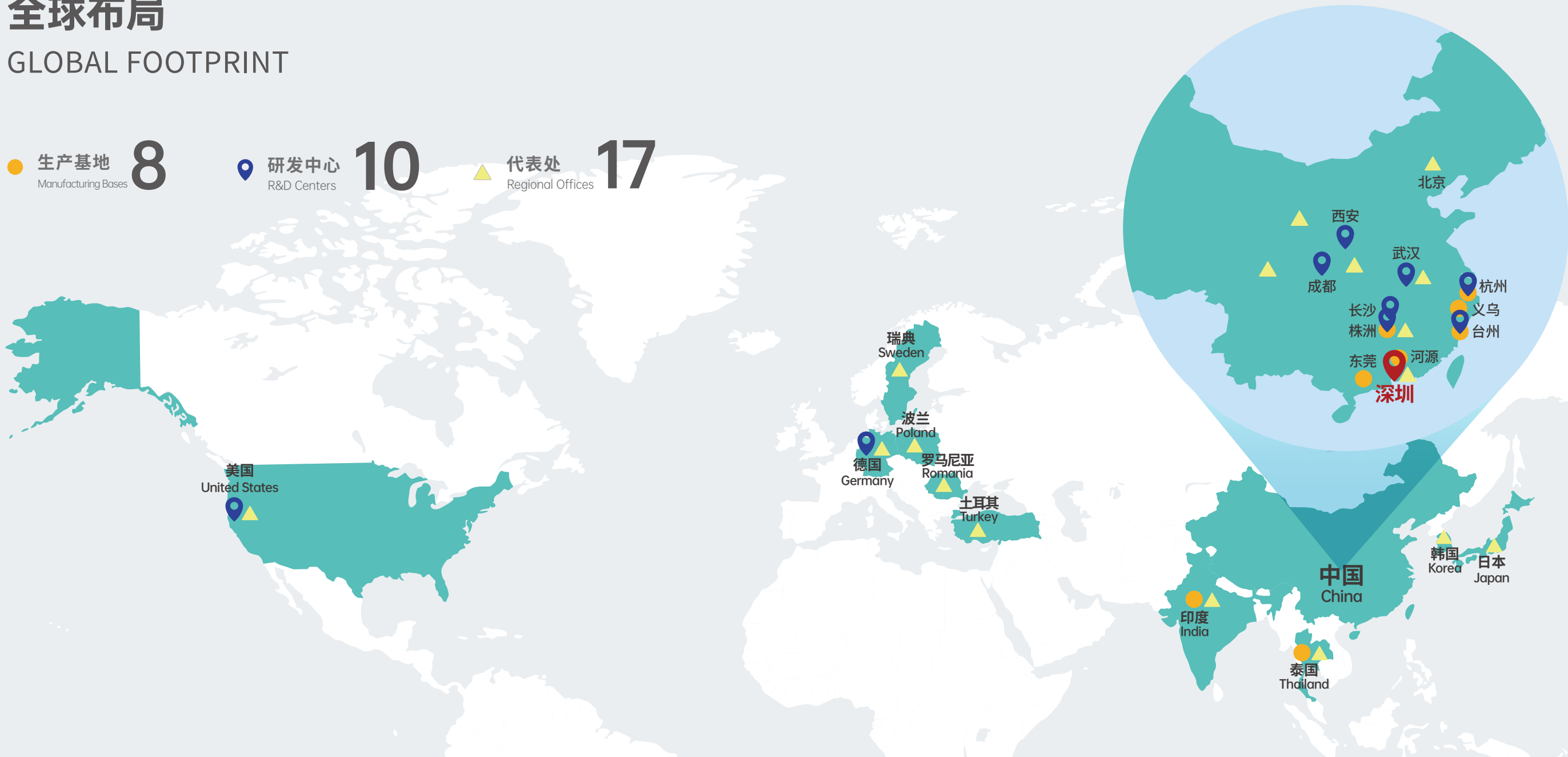
全球布局

GLOBAL FOOTPRINT

● 生产基地 8
Manufacturing Bases

📍 研发中心 10
R&D Centers

▲ 代表处 17
Regional Offices



深圳 Shenzhen



株洲 Zhuzhou



长沙 Changsha



河源 Heyuan



台州 Taizhou



美国 United States



武汉 Wuhan



杭州 Hangzhou



义乌 Yiwu



德国 Germany



泰国 Thailand



印度 India

精益生产，智能制造

LEAN PRODUCTION



一次做对+持续改进
Zero Defect

精益生产+自动化
LEAN Production + Process Automation



产品生命周期管理
Product Lifecycle Management



企业资源计划
Enterprise Resource Planning



制造执行系统
Manufacturing Execution System



研发品质
R&D Quality



供应链品质
Supply Chain Quality



制造品质
Manufacturing Quality



服务品质
Service Quality



ISO9001质量体系
ISO9001

ISO13485医疗
ISO13485

IATF16949汽车
IATF16949

ISO26262功能安全
ISO26262

QC080000有害物质管理
QC080000

全流程自动化
Automation

=

提高效率
Improving Efficiency

+

提高品质
Enhancing Quality

+

加强交付能力
Strengthening Production Capability



生产自动化 Production Automation



- 全自动化车间
- PCBA年产能可达**0.9亿PCS**
- Six automatic workshops
- Annual production capacity of PCBA 90 million pcs
- 各类产线**184条**
- 184 production lines



信息自动化 Information Automation



- 通过信息化系统,实现生产计划合理安排与执行
- 采控生产数据,把控生产进度和质量数据
- 对来料管理实现供应链协同和优化
- 深度分析生产数据,追溯不良品,对生产过程进行优化
- Efficiently arrange and execute production plans through the information system
- Collect and control production data to oversee production schedules and maintain quality metrics
- Coordinate and optimize supply chain material management
- Conduct in-depth analysis of production data to trace defective products, optimizing the overall production process



仓储物流自动化 Warehouse Logistics Automation



- **24小时**物料仓储及分拣配送系统
- 高**24米**,深**85米**自动化立体仓储和**20台**超高速、大载重Miniload堆垛机
- 管理**16万**个电子元器件胶箱
- 运行速度可达**240m/min**,实现高效存取
- 24/7 material warehousing, sorting, and distributing system
- 24m high, 85m deep AS/RS; and 20 ultra-high-speed, large capacity Miniload stacker cranes
- 160,000 plastic boxes of electronic components under management
- Up to 240m/min running speed, achieving highly efficient material storing and retrieving

社会责任

SOCIAL RESPONSIBILITIES

麦米电气积极履行社会责任,结合自身产品链优势,贯彻新发展理念,助力实现“双碳”目标,与社会各界共同共担气候责任,同时聚焦绿色、智能,强化新质生产力,以新动能,全面赋能各行各业,推动全球经济高质量发展。

Megmeet is actively engaged in fulfilling our social responsibilities. Leveraging our resources and strengths, Megmeet embodies the ethos of sustainable management to achieve the dual carbon goals with all human beings. Megmeet also focuses on sustainability, intelligence and the development of new quality productive forces. With the innovation as its core, Megmeet will continue providing solutions worldwide, ensuring the high-quality development of the global economy.



聚焦交通行业, 打造前沿的新能源解决方案

Focusing on the Transportation Industry to Provide Cutting-Edge New Energy Solutions

车载DCDC产品 DC-DC

研发高效率电源转化设备,用于整车低压系统供电。产品采用先进控制技术,其效率超过95%,结构布局紧凑,功率密度高。目前已成功应用于多款乘用车、物流车及大巴空调系统中,为各类车辆提供可靠的电力支持。

DC-DC is a high-efficiency product to convert power for the vehicle's low-voltage system. Adopting advanced control technology, its efficiency exceeds 95%, with a compact size and high-power density. DC-DC is now widely applied in a variety of passenger cars, logistics vehicles and bus air-conditioning systems, providing reliable power support for various types of vehicles.

充电桩模块 Charging Station Module

持续加大在新能源汽车充电系统领域的投入,推出多系列多电压范围的充电模块,功率从3kW至40kW,具备兼容性、灵活性、可靠性等特点,适用于多类车型。

Megmeet is continuously increasing our R&D investment in EVs charging systems. We have developed a range of multi-voltage charging modules, with power ranging from 3kW to 30kW. Our products are characterized by high compatibility, flexibility, reliability, and availability, suitable for different types of vehicles.

R744热泵型热管理系统 R744 Heat Management System (Heat Pump)

采用CO²制冷剂,具有纯天然、0 ODP和1 GWP的特点,符合《蒙特利尔条约》基加利修正案的要求,是公司实现双碳目标的一个重要因子和方向。

It adopts the CO² refrigerant, a purely natural option with 0 Ozone Depletion Potential (ODP) and 1 Global Warming Potential (GWP). Aligning with the requirements set forth in the Kigali Amendment to the Montreal Protocol, this technology represents a significant factor and direction in our endeavors to achieve the dual carbon goals.



聚焦智能家居, 打造智能卫浴

Focusing on Smart Home to Create Smart Bidet

麦米电气旗下子公司怡和卫浴,将绿色发展理念融入产品设计,采用环保原材料,开发节水型和环境友好型的产品。公司推出行业领先的节能变频即热式智能马桶,及独立水压、墙排等新绿色产品,让客户最大程度的享受节能环保和实用便捷。

iKAHE, a subsidiary of Megmeet, integrating the concept of green development into product design and adopting environmentally friendly raw materials, devotes itself to the development of water-saving and environmentally friendly products. iKAHE has launched industry-leading energy-saving variable-frequency instant hot smart toilet, and new-brand green products such as independent water pressure and wall discharge, allowing customers to maximize the enjoyment of energy saving, environmental protection and practical convenience.



聚焦工程行业, 打造智能采油系统

Focusing on Engineering Industry to Provide Intelligent Oil Exploitation System

积极探索数字化与绿色环保的有机融合,对传统抽油机设备进行了重大革新,成功研发出占地仅5m²、功率仅为7.5kW的电潜螺杆泵智能采油系统,与同排量产品相比节能50%以上,大幅减少能耗。

Actively exploring the integration of digitalization and environmentally friendly practices, Megmeet has revolutionized traditional pumping equipment, resulting in the successful development of an electric submersible screw pump intelligent oil extraction system. It only occupies 5m² and consumes just 7.5kW, leading to over 50% energy savings compared to those with similar displacement.

67.5亿

营业收入

Business income:
\$932.9 million USD

6:4

员工男女比例

Gender Diversity
Men VS Women

101.1亿

总资产

Total assets:
\$1,399.2 million USD

69,500立方米

再生水资源使用

Use of renewable water
resources 69,500 m³

6.29亿

归母净利润

Net margin:
\$86.9 million USD

1,204,265度(千瓦时)

可再生能源使用

Use of renewable energy
1,204,265 kwh

合作客户

CUSTOMER HIGHLIGHTS

电源产品合作客户 Power Solutions



工业自动化合作客户 Industrial Automation



新能源&轨道交通合作客户 New Energy Transportation



智能装备合作客户 Intelligent Equipment



智能家电电控合作客户 Home Appliance Control Solutions

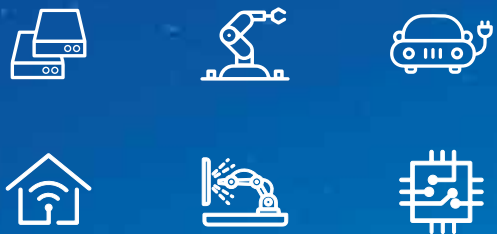


精密连接合作客户 Precision Connection



企业文化

CORPORATE CULTURE



麦米电气 改变生活无处不在

Megmeet Everywhere,
Transforming Your Everyday

领先
LEAD

开放
OPEN

合作
COOPERATE

创新
INNOVATE