

LOVOL

雷沃重工集团有限公司

LOVOL HEAVY INDUSTRY GROUP CO., LTD.

雷沃重工集团有限公司
LOVOL HEAVY INDUSTRY GROUP CO., LTD.

地址：山东省青岛市黄岛区黄河东路75号
电话：400-8291-888
网址：www.wlovol.com

产品信息仅供参考，雷沃重工集团有限公司保留其解释权。

Addresses: No.75, Huanghe East Road, Huangdao District,
QingdaoCity, andong Province, China.

TEL: 400-8291-888

WEB: www.wlovol.com

Product information is for reference only. Lovol Heavy Industry Group
Co., Ltd. reserves the right of interpretation.



雷沃重工集团
LOVOL HEAVY
INDUSTRY GROUP



雷沃重工
LOVOL HEAVY
INDUSTRY





目录

企业篇

- 01-02 企业简介
- 03-04 母公司概况
- 05-06 母公司架构
- 07-08 战略定位
- 09-10 发展战略
- 11-12 企业文化

研发与产品篇

- 13-14 全球研发体系
- 15-16 核心技术
- 17-32 产品型谱
- 33-34 新能源产品
- 35-36 一体化解决方案

制造篇

- 37-38 制造体系
- 39-40 灯塔工厂

营销与服务篇

- 41-42 全球销售服务网络
- 43-44 服务理念

CATALOGUE

COMPANY SECTION

- 01-02 Company Introduction
- 03-04 Overview of the Parent Company
- 05-06 Corporate Structure of the Parent Company
- 07-08 Strategic Positioning
- 09-10 Development Strategy
- 11-12 Corporate Culture

R&D OF PRODUCTS SECTION

- 13-14 Global R&D System
- 15-16 Core Technologies
- 17-32 Product Portfolio
- 33-34 New Energy Products
- 35-36 Integrated Solutions

MANUFACTURING SECTION

- 37-38 Manufacturing System
- 39-40 Lighthouse Factory

MARKETING AND SERVICES SECTION

- 41-42 Global Sales and Service Network
- 43-44 Service Philosophy

企业简介

COMPANY INTRODUCTION

LOVOL HEAVY INDUSTRY GROUP CO.,LTD.

雷沃重工是潍柴控股集团旗下国有全资子公司，成立于2004年，目前拥有“3个制造基地和2个创新中心”。

雷沃重工业务是潍柴集团六大核心业务板块之一，产品覆盖挖掘机、装载机、宽体矿卡、挖掘装载机四大核心业务，其中挖掘机、装载机、挖掘装载机的研发、生产、销售位于青岛，现占地900余亩；宽体矿卡的研发、生产位于江苏扬州，占地面积300余亩。雷沃重工通过为客户提供智能化产品、设备互联、智慧施工、新能源产品以及场景解决方案，已逐步发展成为全球领先的智慧施工解决方案提供商。

Lovol Heavy Industry, a wholly state-owned subsidiary under Weichai Holding Group, was established in 2004. It currently possesses "three manufacturing bases and two innovation centers".

Lovol Heavy Industry's business is one of the six core business segments of Weichai Group. Its products cover four main categories including excavators, loaders, off-highway mining trucks, and backhoe loaders. The R&D, production, and sales center of excavators, loaders, and backhoe loaders is located in Qingdao, covering an area of over 900 acres. The R&D and production center of off-highway mining trucks is located in Yangzhou, Jiangsu, covering an area of over 300 acres. Lovol Heavy Industry has gradually developed into a global leader in intelligent construction solutions by providing customers with intelligent products, equipment interconnection, intelligent construction, new energy products, and scenario solutions.

未来，雷沃重工将继续聚焦挖掘机、装载机、宽体矿卡、挖掘装载机四大核心战略业务，持续推进“四个转型”，推动市场全球化、管理数字化、技术低碳化、结构差异化，实现业务跨越式增长，不断为全球客户提供智能高效的产品和服务解决方案。

In the future, Lovol Heavy Industry will continue to focus on its four core strategic businesses, excavators, loaders, off-highway mining truck mining trucks, and backhoe loaders. It will persist in advancing "four transformations" including promoting market globalization, digitalizing management, reducing technological carbon footprint, and diversifying its structure. This will achieve significant business growth, continuously providing global customers with intelligent and efficient product and service solutions.



2004年

成立时间
Date of Establishment



3000+

全球员工
Global employees



TOP50

全球工程机械
Top 50 Global Construction
Machinery Manufacturers

核心业务
CORE BUSINESSES



挖掘机
Excavator



装载机
Loader



宽体矿卡
Off-highway mining truck



挖掘装载机
Backhoe loader

母公司概况

OVERVIEW OF THE PARENT COMPANY



潍柴集团是世界知名的高端制造企业，位列中国企业500强第156位。主营业务涵盖动力系统、工程机械、商用车、农业装备、智慧物流等业务板块，产品远销150多个国家和地区。

Weichai Group is a world-renowned high-end manufacturing enterprise, ranking 156th in the Fortune Global 500 list of Chinese enterprises. Its main business covers power systems, construction machinery, commercial vehicles, agricultural equipment, smart logistics, and other business sectors, with products exported to more than 150 countries and regions.



总部 HQ 山东·潍坊 Shandong weifang

1946年
成立时间
Founded in

10万+
全球员工
Global employees (100 thousand)

150+
业务覆盖国家和地区
Countries and regions with business coverage

¥3100亿/\$43BN
营业收入
Revenue

旗下全球品牌
WORLDWIDE BRANDS



母公司架构 CORPORATE STRUCTURE OF THE PARENT COMPANY

潍柴集团是山东重工集团
核心成员之一

是全球具有重要影响力的
工业装备跨国集团

Weichai Group is one of the core members
of Shandong Heavy Industry Group.

Multinational Industrial Equipment Group



战略定位 STRATEGIC POSITIONING

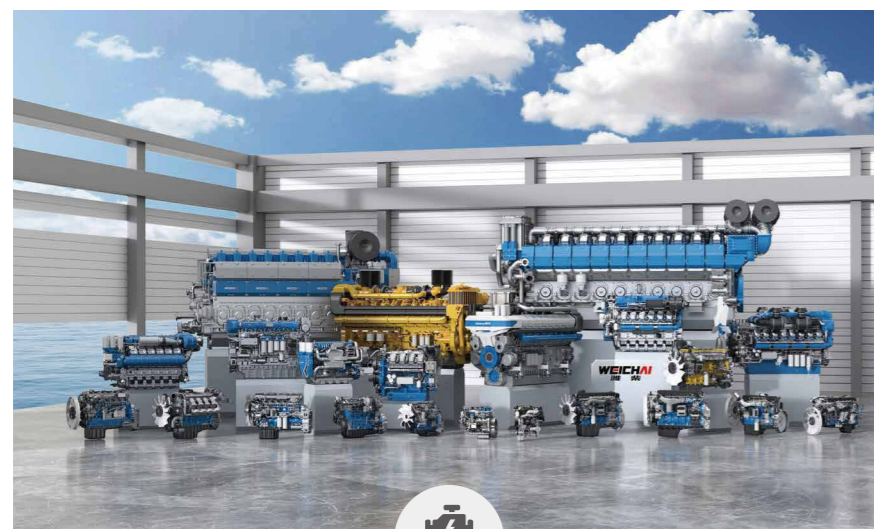
工程机械业务是潍柴集团六大核心业务板块之一

THE CONSTRUCTION MACHINERY BUSINESS IS ONE OF THE SIX CORE BUSINESS SEGMENTS OF THE WEICHAI GROUP



工程机械

Construction machinery



动力系统
Powertrain System



商用车
Commercial Vehicle



农业装备
Agricultural Equipment



智慧物流
Intelligent Logistics



海洋交通装备
Marine Mobility

发展战略

DEVELOPMENT STRATEGY

为应对未来变局中的机遇和挑战,雷沃将持续推进“四个转型”,实现业务跨越式增长。

To address opportunities and challenges in the future landscape, Lovol will continue to advance its "four transformations" to achieve substantial business growth.

全球化市场转型

Transformation to market globalization

由深耕中国向深耕全球转型

Transitioning from deep cultivation in China to deep cultivation globally



低碳化技术转型

Transformation to low-carbon technology

由传统能源向新能源转型

Transitioning from traditional energy to new energy

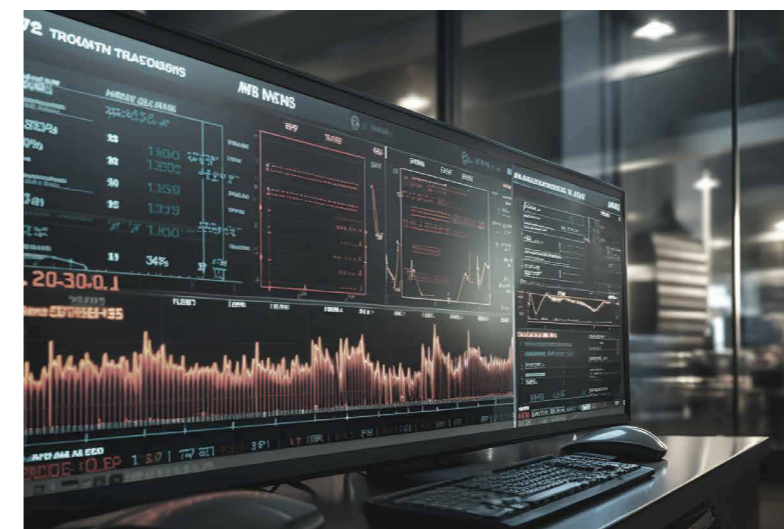


数字化管理转型

Transformation to digital management

由业务拉动向数字化驱动转型

Transitioning from business-driven to digitally-driven

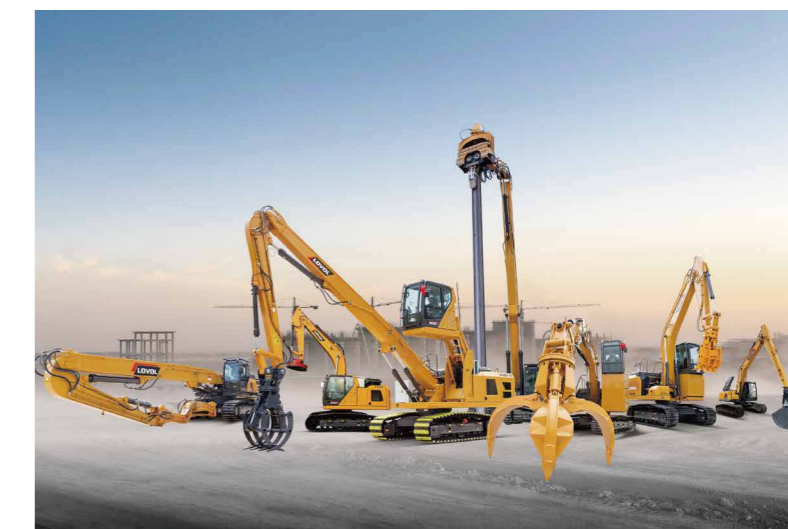


差异化结构转型

Transformation to differentiated structure

由全面发展向细分市场、大型化转型

Transitioning from a comprehensive development to market segmentation and scale enhancement



企业文化 CORPORATE CULTURE

使命 MISSION

致力于为全球客户
提供智能高效的
产品和服务解决方案

Dedicated to providing intelligent
and efficient product and service
solutions for global customers

愿景 VISION

成为全球领先的
智慧施工解决方案提供商

Become the world leading provider
of intelligent construction solutions

核心价值观 CORE VALUE

客户满意是我们的宗旨
We aim at customers' satisfaction

品牌定位 BRAND POSITIONING

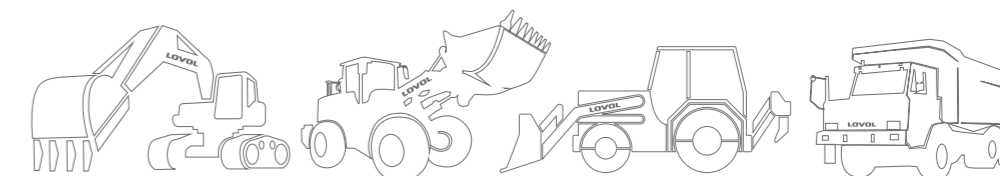
智能高效的
全球工程机械领先品牌
Intelligent and efficient global
construction machinery leading
brand

执行力文化 EXECUTIVE CULTURE

干就负责 做就到位
Take responsibility for whatever
you do, commit to be the best at
whatever you do

岗位责任文化 WORK RESPONSIBILITY CULTURE

我生产的产品
我向客户保证
Crafted by me,
committed to satisfaction



全球研发体系

GLOBAL R&D SYSTEM

集团拥有完善的研发体系和一流的研发团队, 致力于推动技术创新和产品升级。

近年来, 雷沃重工不断加大研发投入, 整合全球行业高端人才, 目前已形成了“中国+日本+欧洲”的全球研发体系, 拥有九大技术中心、研发人员近千人, 同时与国内外知名企业和科研机构开展深度合作, 共同探索行业前沿技术, 整体研发能力得以快速提升。

The group has a well-established R&D system and a first-class R&D team, committed to driving technological innovation and product upgrades.

In recent years, Lovol Heavy Industry has continuously increased its R&D investment, integrating top talents in the industry worldwide. It has established a global R&D system encompassing "China + Japan + Europe", with nine major technical centers and nearly a thousand R&D personnel. Additionally, it collaborates closely with renowned domestic and international enterprises and research institutions to explore cutting-edge technologies in the industry, rapidly enhancing its overall R&D capabilities.

- 挖掘机技术中心
Excavator Technology Center
- 矿挖技术中心
Mining Excavation Technology Center
- 装载机技术中心
Loader Technology Center
- 矿卡技术中心
Mining Truck Technology Center
- 系统开发中心
System Development Center



- 工业设计中心
Industrial Design Center
- 验证中心
Verification Center
- 未来技术研究中心
Future Technology Research Center
- 雷沃日本工程中心
Japanese Engineering Center of Lovol

全球研发体系

GLOBAL R&D SYSTEM



核心技术

CORE TECHNOLOGIES

集团自主核心零部件资源

GROUP'S INDEPENDENT CORE COMPONENT RESOURCES

	发动机 Engine	
	液压件 Hydraulic System	
	减速机、分动箱 Reducer、Transfer Case	
	新能源和电控系统 New Energy and Electronic Control Systems	
	矿卡桥箱 Mining Truck Axle and Gearbox	
	装载机桥箱 Loader Axle and Gearbox	

1

动力总成集成技术

POWERTRAIN INTEGRATION TECHNOLOGY

发动机与液压系统完美匹配集成,使得作业油耗更低、效率更高、作业更舒适。

The perfect integration of engine and hydraulic systems ensures lower fuel consumption, higher efficiency, and enhanced operational comfort.

2

AT/HST/CVT传动技术

AT/HST/CVT TRANSMISSION TECHNOLOGY

装载机高端传动技术,传动效率更高、可靠性更强、运行更平稳、使用寿命更长。

The advanced transmission technology for loaders offers higher transmission efficiency, enhanced reliability, smoother operation, and longer service life.

3

智能施工技术

INTELLIGENT CONSTRUCTION TECHNOLOGY

融合人工智能、大数据、云计算、物联网与5G技术,对施工过程实时监测、精准感知、智能决策,实现施工自动化、智能化、高效化。

Integrating artificial intelligence, big data, cloud computing, the Internet of Things, and 5G technology to provide real-time monitoring, precise sensing, and intelligent decision-making in the construction process, achieving automation, intelligence, and efficiency in construction.

4

新能源技术

NEW TECHNOLOGY

纯电、混动、甲醇等多种技术路线相结合,实现多样化的低碳产品定制化开发,为客户创造更大价值。

Combining pure electric, hybrid, methanol, and other technologies to achieve diversified and customized development of low-carbon products, creating greater value for customers.



| EXCAVATOR 挖掘机

挖掘未来 掌控无限

EXCAVATING THE FUTURE, MASTERING THE INFINITE

每一次破土而出, 都是对未知的勇敢探索。
Every breakthrough is a brave exploration into the unknown.



挖掘机产品型谱

EXCAVATOR PRODUCT PORTFOLIO

国内
DOMESTIC

微挖 MINI EXCAVATORS

纯电
Electric



FR18F-E

整机重量 Operating Weight (kg): 1810
斗容 Bucket Capacity (m³): 0.04
电池容量 Battery Capacity (kWh): 21



FR18F-u

整机重量 Operating Weight (kg): 1810
斗容 Bucket Capacity (m³): 0.04
额定功率 Rated Power (kW/rpm): 11.8/2300



FR20F-u

整机重量 Operating Weight (kg): 1810
斗容 Bucket Capacity (m³): 0.05
额定功率 Rated Power (kW/rpm): 11.8/2300



FR35F-u

整机重量 Operating Weight (kg): 3400
斗容 Bucket Capacity (m³): 0.1
额定功率 Rated Power (kW/rpm): 22.2/2400



FR36F-u

整机重量 Operating Weight (kg): 3800
斗容 Bucket Capacity (m³): 0.12
额定功率 Rated Power (kW/rpm): 22.2/2400

小挖 SMALL EXCAVATORS



FR60F

整机重量 Operating Weight (kg): 5730
斗容 Bucket Capacity (m³): 0.23
额定功率 Rated Power (kW/rpm): 36.8/2200



KWC6.0/0.23L

整机重量 Operating Weight (kg): 5800
斗容 Bucket Capacity (m³): 0.23
额定功率 Rated Power (kW/rpm): 36.8/2200



FR75F

整机重量 Operating Weight (kg): 7250
斗容 Bucket Capacity (m³): 0.3
额定功率 Rated Power (kW/rpm): 36.8/2200



FR85F

整机重量 Operating Weight (kg): 7850
斗容 Bucket Capacity (m³): 0.32
额定功率 Rated Power (kW/rpm): 36.8/2200



FR130F

整机重量 Operating Weight (kg): 12200
斗容 Bucket Capacity (m³): 0.55
额定功率 Rated Power (kW/rpm): 92/2200



FR150F

整机重量 Operating Weight (kg): 13850
斗容 Bucket Capacity (m³): 0.6
额定功率 Rated Power (kW/rpm): 92/2200



FW60F

整机重量 Operating Weight (kg): 5700
斗容 Bucket Capacity (m³): 0.23
额定功率 Rated Power (kW/rpm): 53.7/2100



FW150F

整机重量 Operating Weight (kg): 14000
斗容 Bucket Capacity (m³): 0.6
额定功率 Rated Power (kW/rpm): 129/2200

中挖 MEDIUM EXCAVATORS



FR200F

整机重量 Operating Weight (kg): 21000
斗容 Bucket Capacity (m³): 0.96
额定功率 Rated Power (kW/rpm): 129/2000



FR215F-E

整机重量 Operating Weight (kg): 24500
斗容 Bucket Capacity (m³): 1.1
额定功率 Rated Power (kW/rpm): 125/1800



FR215F-EP

整机重量 Operating Weight (kg): 22000
斗容 Bucket Capacity (m³): 1
额定功率 Rated Power (kW/rpm): 125/1800



FR220F

整机重量 Operating Weight (kg): 23000
斗容 Bucket Capacity (m³): 1.1
额定功率 Rated Power (kW/rpm): 160/2000



FR215F

整机重量 Operating Weight (kg): 21500
斗容 Bucket Capacity (m³): 1
额定功率 Rated Power (kW/rpm): 129/2000



FR245F

整机重量 Operating Weight (kg): 24000
斗容 Bucket Capacity (m³): 1.35
额定功率 Rated Power (kW/rpm): 129/2000



FR260F

整机重量 Operating Weight (kg): 26000
斗容 Bucket Capacity (m³): 1.5
额定功率 Rated Power (kW/rpm): 190/2000

大挖 LARGE EXCAVATORS



FR350F

整机重量 Operating Weight (kg): 33000
斗容 Bucket Capacity (m³): 1.9
额定功率 Rated Power (kW/rpm): 260/2000



FR390F

整机重量 Operating Weight (kg): 39500
斗容 Bucket Capacity (m³): 2.2
额定功率 Rated Power (kW/rpm): 260/2000



FR560F

整机重量 Operating Weight (kg): 53000
斗容 Bucket Capacity (m³): 2.8-3.2
额定功率 Rated Power (kW/rpm): 562/1900



FR600F

整机重量 Operating Weight (kg): 58000
斗容 Bucket Capacity (m³): 3.6
额定功率 Rated Power (kW/rpm): 562/1900

矿挖 MINING EXCAVATORS



FR680F

整机重量 Operating Weight (kg): 64000
斗容 Bucket Capacity (m³): 4
额定功率 Rated Power (kW/rpm): 562/1900



FR750F

整机重量 Operating Weight (kg): 70000
斗容 Bucket Capacity (m³): 4.5-6.0
额定功率 Rated Power (kW/rpm): 566/1900



FR850F

整机重量 Operating Weight (kg): 79000
斗容 Bucket Capacity (m³): 5.0-6.2
额定功率 Rated Power (kW/rpm): 566/1900



FR950F-HK

整机重量 Operating Weight (kg): 92000
斗容 Bucket Capacity (m³): 5.66/1900



FR1200F-HK

整机重量 Operating Weight (kg): 116000
额定功率 Rated Power (kW/rpm): 571/1800



FR1000F

整机重量 Operating Weight (kg): 100000
斗容 Bucket Capacity (m³): 6.0-8.0
额定功率 Rated Power (kW/rpm): 571/1800



FR1350F

整机重量 Operating Weight (kg): 125000
斗容 Bucket Capacity (m³): 8.0-10.0
额定功率 Rated Power (kW/rpm): 680/1800



FR1500F

整机重量 Operating Weight (kg): 145000
斗容 Bucket Capacity (m³): 8.0-12.0
额定功率 Rated Power (kW/rpm): 680/1800

微挖 MINI EXCAVATORS



FR18E2-u
整机重量 Operating Weight (kg): 1810
斗容 Bucket Capacity (m³): 0.04
额定功率 Rated Power (kW/rpm): 10.9/2400



FR18F-E
整机重量 Operating Weight (kg): 1810
斗容 Bucket Capacity (m³): 0.04
电池容量 Battery Capacity (kWh): 21



FR20F-u
整机重量 Operating Weight (kg): 1900
斗容 Bucket Capacity (m³): 0.04
额定功率 Rated Power (kW/rpm): 10.9/2400



FR26F-u
整机重量 Operating Weight (kg): 2800
斗容 Bucket Capacity (m³): 0.08
额定功率 Rated Power (kW/rpm): 15.2/2500



FR30F-u
整机重量 Operating Weight (kg): 3400
斗容 Bucket Capacity (m³): 0.1
额定功率 Rated Power (kW/rpm): 22.2/2400



FR36F-u
整机重量 Operating Weight (kg): 3800
斗容 Bucket Capacity (m³): 0.12
额定功率 Rated Power (kW/rpm): 18.2/2400



FR55F-u
整机重量 Operating Weight (kg): 5750
斗容 Bucket Capacity (m³): 0.18
额定功率 Rated Power (kW/rpm): 35.5/2200

小挖 SMALL EXCAVATORS



FR60E2-H
整机重量 Operating Weight (kg): 5730
斗容 Bucket Capacity (m³): 0.23
额定功率 Rated Power (kW/rpm): 36.2/2100



FR60F
整机重量 Operating Weight (kg): 5760
斗容 Bucket Capacity (m³): 0.23
额定功率 Rated Power (kW/rpm): 36.8/2200



FR80E2
整机重量 Operating Weight (kg): 7650
斗容 Bucket Capacity (m³): 0.3
额定功率 Rated Power (kW/rpm): 44.4/2100



FR80F
整机重量 Operating Weight (kg): 7300
斗容 Bucket Capacity (m³): 0.3
额定功率 Rated Power (kW/rpm): 36.8/2200



FR130F
整机重量 Operating Weight (kg): 12740
斗容 Bucket Capacity (m³): 0.55
额定功率 Rated Power (kW/rpm): 92/2200



FR130E2-H
整机重量 Operating Weight (kg): 12200
斗容 Bucket Capacity (m³): 0.55
额定功率 Rated Power (kW/rpm): 92/2200



FR150F
整机重量 Operating Weight (kg): 13840
斗容 Bucket Capacity (m³): 0.6
额定功率 Rated Power (kW/rpm): 92/2200

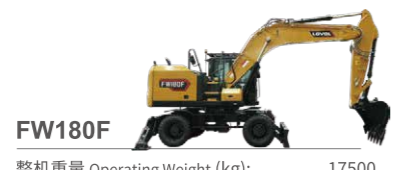


FR150E2
整机重量 Operating Weight (kg): 13450
斗容 Bucket Capacity (m³): 0.6
额定功率 Rated Power (kW/rpm): 86/2200

轮挖 WHEEL EXCAVATORS



FW160F
整机重量 Operating Weight (kg): 14900
斗容 Bucket Capacity (m³): 0.6
额定功率 Rated Power (kW/rpm): 123/2200



FW180F
整机重量 Operating Weight (kg): 17500
斗容 Bucket Capacity (m³): 0.85
额定功率 Rated Power (kW/rpm): 123/2200



FW215F
整机重量 Operating Weight (kg): 23000
斗容 Bucket Capacity (m³): 1.0
额定功率 Rated Power (kW/rpm): 124/2000

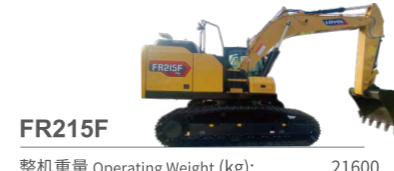


FW480F-RG
整机重量 Operating Weight (kg): 47200
斗容 Bucket Capacity (m³): 0.8
额定功率 Rated Power (kW/rpm): 247/2000

中挖 MEDIUM EXCAVATORS



FR215E2
整机重量 Operating Weight (kg): 21500
斗容 Bucket Capacity (m³): 1.1
额定功率 Rated Power (kW/rpm): 129/2200



FR215F
整机重量 Operating Weight (kg): 21600
斗容 Bucket Capacity (m³): 1.1
额定功率 Rated Power (kW/rpm): 123/2200



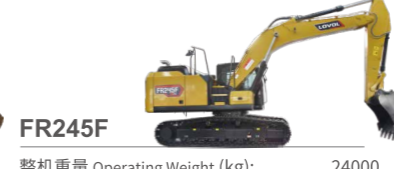
FR220D
整机重量 Operating Weight (kg): 21800
斗容 Bucket Capacity (m³): 0.96
额定功率 Rated Power (kW/rpm): 113.2/2100



FR220F
整机重量 Operating Weight (kg): 21600
斗容 Bucket Capacity (m³): 1.1
额定功率 Rated Power (kW/rpm): 133/2000



FR245E2
整机重量 Operating Weight (kg): 23100
斗容 Bucket Capacity (m³): 1.2
额定功率 Rated Power (kW/rpm): 160/2000



FR245F
整机重量 Operating Weight (kg): 24000
斗容 Bucket Capacity (m³): 1.2
额定功率 Rated Power (kW/rpm): 160/2000

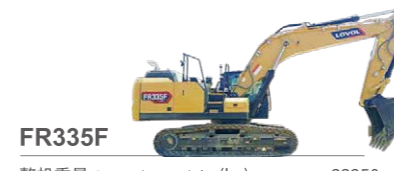


FR260F
整机重量 Operating Weight (kg): 26000
斗容 Bucket Capacity (m³): 1.5
额定功率 Rated Power (kW/rpm): 160/2000

大挖 LARGE EXCAVATORS



FR315F
整机重量 Operating Weight (kg): 31000
斗容 Bucket Capacity (m³): 1.7
额定功率 Rated Power (kW/rpm): 228/2000



FR335F
整机重量 Operating Weight (kg): 33250
斗容 Bucket Capacity (m³): 1.7
额定功率 Rated Power (kW/rpm): 225/2000



FR350E2
整机重量 Operating Weight (kg): 35800
斗容 Bucket Capacity (m³): 1.65
额定功率 Rated Power (kW/rpm): 212/2000



FR375F
整机重量 Operating Weight (kg): 37000
斗容 Bucket Capacity (m³): 1.9
额定功率 Rated Power (kW/rpm): 247/2000



FR420F
整机重量 Operating Weight (kg): 42000
斗容 Bucket Capacity (m³): 2.2
额定功率 Rated Power (kW/rpm): 247/2000



FR510E2
整机重量 Operating Weight (kg): 49000
斗容 Bucket Capacity (m³): 2.5
额定功率 Rated Power (kW/rpm): 298/2000



FR560F
整机重量 Operating Weight (kg): 53000
斗容 Bucket Capacity (m³): 3.2
额定功率 Rated Power (kW/rpm): 316/1900

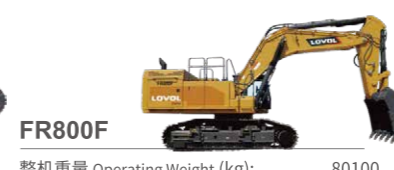


FR600F
整机重量 Operating Weight (kg): 58000
斗容 Bucket Capacity (m³): 3.2
额定功率 Rated Power (kW/rpm): 316/1900

矿挖 MINING EXCAVATORS



FR700F
整机重量 Operating Weight (kg): 69900
斗容 Bucket Capacity (m³): 5
额定功率 Rated Power (kW/rpm): 566/1900



FR800F
整机重量 Operating Weight (kg): 80100
斗容 Bucket Capacity (m³): 5.5
额定功率 Rated Power (kW/rpm): 566/1900



FR1000F
整机重量 Operating Weight (kg): 100000
斗容 Bucket Capacity (m³): 7.0
额定功率 Rated Power (kW/rpm): 571/1800



FR1500F
整机重量 Operating Weight (kg): 150000
斗容 Bucket Capacity (m³): 10.0
额定功率 Rated Power (kW/rpm): 680/1800

| LOADER 装载机

装载梦想 传递力量

LOADING DREAMS, DELIVERING POWER

无论何地, 都能轻松应对, 为您的理想增添无限活力。

To handle any situation with ease anywhere, adding infinite vitality to your aspirations.



装载机产品型谱

LOADER PRODUCT PORTFOLIO

国内
DOMESTIC

小型 SMALL LOADERS



FL935-N
 额定载重量 Rated Load (kg): 2800/3000
 斗容 Bucket Capacity (m³): 1.5-2.3
 额定功率 Rated Power (kW/rpm): 92/2200



FL936K
 额定载重量 Rated Load (kg): 3000
 斗容 Bucket Capacity (m³): 2
 额定功率 Rated Power (kW/rpm): 92/2200



ZL30E
 额定载重量 Rated Load (kg): 3000
 斗容 Bucket Capacity (m³): 1.8
 额定功率 Rated Power (kW/rpm): 92/2200

中型 MEDIUM LOADERS



ZL50E
 额定载重量 Rated Load (kg): 5000
 斗容 Bucket Capacity (m³): 2.5
 额定功率 Rated Power (kW/rpm): 162/2000



FL955F-HD
 额定载重量 Rated Load (kg): 5000
 斗容 Bucket Capacity (m³): 3
 额定功率 Rated Power (kW/rpm): 170/2000



FL955-N
 额定载重量 Rated Load (kg): 5000
 斗容 Bucket Capacity (m³): 3
 额定功率 Rated Power (kW/rpm): 170/2200



FL956K-V
 额定载重量 Rated Load (kg): 5200
 斗容 Bucket Capacity (m³): 3
 额定功率 Rated Power (kW/rpm): 170/1800



FL956K 超越版
 额定载重量 Rated Load (kg): 5500
 斗容 Bucket Capacity (m³): 3.3
 额定功率 Rated Power (kW/rpm): 170/1800



FL960K-HST
 额定载重量 Rated Load (kg): 5500
 斗容 Bucket Capacity (m³): 3.6
 额定功率 Rated Power (kW/rpm): 162/2000



FL960EV
 额定载重量 Rated Load (kg): 5800
 斗容 Bucket Capacity (m³): 3.6
 电量 Battery Capacity (kWh): 289/357



FL960K-AT
 额定载重量 Rated Load (kg): 5500
 斗容 Bucket Capacity (m³): 3.6
 额定功率 Rated Power (kW/rpm): 170/2000

纯电
Electric



FL966EV
 额定载重量 Rated Load (kg): 6500
 斗容 Bucket Capacity (m³): 4
 电量 Battery Capacity (kWh): 357

FL966K



额定载重量 Rated Load (kg): 6500
 斗容 Bucket Capacity (m³): 4
 额定功率 Rated Power (kW/rpm): 178/2200

FL966K-AT



额定载重量 Rated Load (kg): 6500
 斗容 Bucket Capacity (m³): 4
 额定功率 Rated Power (kW/rpm): 178/2200

纯电
Electric



FL968K-E
 额定载重量 Rated Load (kg): 6500
 斗容 Bucket Capacity (m³): 4.4
 电量 Battery Capacity (kWh): 433

静液压
Hydrostatic



FL968K
 额定载重量 Rated Load (kg): 6500
 斗容 Bucket Capacity (m³): 4
 额定功率 Rated Power (kW/rpm): 178/2200

FL970K-HST



额定载重量 Rated Load (kg): 6800
 斗容 Bucket Capacity (m³): 4.4
 额定功率 Rated Power (kW/rpm): 182/2000

FL976K



额定载重量 Rated Load (kg): 7000
 斗容 Bucket Capacity (m³): 4.5
 额定功率 Rated Power (kW/rpm): 210/2100

静液压
Hydrostatic



FL980K-HST
 额定载重量 Rated Load (kg): 8000
 斗容 Bucket Capacity (m³): 5.5
 额定功率 Rated Power (kW/rpm): 199/2200



此配置表仅供参考，最终以实车为准。 This configuration table is for reference only, and the final specifications are subject to the actual vehicle.

海外
INTERNATIONAL

紧凑型 COMPACT LOADERS



FL918

额定载重量 Rated Load (kg): 1800
斗容 Bucket Capacity (m³): 1.2
额定功率 Rated Power (kW/rpm): 55.4/2400



FL920H

额定载重量 Rated Load (kg): 1800
斗容 Bucket Capacity (m³): 1
额定功率 Rated Power (kW/rpm): 60/2400

小型 SMALL LOADERS



FL936H

额定载重量 Rated Load (kg): 3000
斗容 Bucket Capacity (m³): 2
额定功率 Rated Power (kW/rpm): 92/2200



FL938H

额定载重量 Rated Load (kg): 3500
斗容 Bucket Capacity (m³): 2
额定功率 Rated Power (kW/rpm): 105/2200



FL946H

额定载重量 Rated Load (kg): 4000
斗容 Bucket Capacity (m³): 2.3
额定功率 Rated Power (kW/rpm): 118/2000



FL948K

额定载重量 Rated Load (kg): 4500
斗容 Bucket Capacity (m³): 3
额定功率 Rated Power (kW/rpm): 153/2000

中型 MEDIUM LOADERS



FL955K

额定载重量 Rated Load (kg): 5200
斗容 Bucket Capacity (m³): 3
额定功率 Rated Power (kW/rpm): 162/2000



FL955F-II

额定载重量 Rated Load (kg): 5000
斗容 Bucket Capacity (m³): 3
额定功率 Rated Power (kW/rpm): 162/2000



FL956H-V

额定载重量 Rated Load (kg): 5000
斗容 Bucket Capacity (m³): 3
额定功率 Rated Power (kW/rpm): 162/2000



FL956K

额定载重量 Rated Load (kg): 5500
斗容 Bucket Capacity (m³): 3.3
额定功率 Rated Power (kW/rpm): 170/1800



FL956H

额定载重量 Rated Load (kg): 5500
斗容 Bucket Capacity (m³): 3.3
额定功率 Rated Power (kW/rpm): 162/2000



FL958K

额定载重量 Rated Load (kg): 5500
斗容 Bucket Capacity (m³): 3.3
额定功率 Rated Power (kW/rpm): 162/2000



FL960K

额定载重量 Rated Load (kg): 5500
斗容 Bucket Capacity (m³): 3.6
额定功率 Rated Power (kW/rpm): 153/2000



FL960

额定载重量 Rated Load (kg): 5500
斗容 Bucket Capacity (m³): 3.3
额定功率 Rated Power (kW/rpm): 170/2200

纯电
Electric

FL960EV

额定载重量 Rated Load (kg): 5800
斗容 Bucket Capacity (m³): 3.6
电池容量 Battery Capacity (kWh): 289/357

FL966H



额定载重量 Rated Load (kg): 6000
斗容 Bucket Capacity (m³): 4
额定功率 Rated Power (kW/rpm): 175/2200

FL966K



额定载重量 Rated Load (kg): 6500
斗容 Bucket Capacity (m³): 4
额定功率 Rated Power (kW/rpm): 178/2200

FL968K



额定载重量 Rated Load (kg): 6500
斗容 Bucket Capacity (m³): 4.0
额定功率 Rated Power (kW/rpm): 178/2200



FL968H

额定载重量 Rated Load (kg): 6000
斗容 Bucket Capacity (m³): 4
额定功率 Rated Power (kW/rpm): 178/2200



FL970

额定载重量 Rated Load (kg): 6500
斗容 Bucket Capacity (m³): 4
额定功率 Rated Power (kW/rpm): 192/2100



FL976H

额定载重量 Rated Load (kg): 7000
斗容 Bucket Capacity (m³): 4.5
额定功率 Rated Power (kW/rpm): 210/2200



FL976K

额定载重量 Rated Load (kg): 7000
斗容 Bucket Capacity (m³): 4.5
额定功率 Rated Power (kW/rpm): 210/2200



FL978H

额定载重量 Rated Load (kg): 7000
斗容 Bucket Capacity (m³): 4.5
额定功率 Rated Power (kW/rpm): 210/2200



FL978K

额定载重量 Rated Load (kg): 7000
斗容 Bucket Capacity (m³): 4.5
额定功率 Rated Power (kW/rpm): 180/2200

静液压
Hydrostatic

FL980K-HST

额定载重量 Rated Load (kg): 8000
斗容 Bucket Capacity (m³): 5.2
额定功率 Rated Power (kW/rpm): 210/2200

挖掘装载机 BACKHOE LOADERS



FB878H

大小轮

挖斗容量 Digging Bucket Capacity (m³): 0.18
铲斗容量 Bucket Capacity (m³): 1
额定功率 Rated Power (kW/rpm): 74/2200



FB878M

大小轮

挖斗容量 Digging Bucket Capacity (m³): 0.2
铲斗容量 Bucket Capacity (m³): 1
额定功率 Rated Power (kW/rpm): 74/2200



FB878X

大四轮

挖斗容量 Digging Bucket Capacity (m³): 0.18
铲斗容量 Bucket Capacity (m³): 1
额定功率 Rated Power (kW/rpm): 74/2200

| OFF-HIGHWAY MINING TRUCK 宽体矿卡

承载希望, 稳定前行 CARRYING HOPE, MOVING FORWARD STEADILY

在矿石的海洋中, 它是您最坚实的后盾, 承载梦想前行。

In the ocean of ores, it stands as your strongest support, carrying your dreams forward.



矿卡产品型谱

MINING TRUCK PRODUCT PORTFOLIO

国内
DOMESTIC

90T



LT90

最大总质量 Gross Vehicle Weight (kg): 90000
 货箱容积 Struck (m³): 32
 额定功率 Rated Power (kW/rpm): 338/2100

110T

纯电
Electric

LT105E

最大总质量 Gross Vehicle Weight (kg): 105000
 货箱容积 Struck (m³): 40
 额定功率 Rated Power (kW/rpm): 520/5200



LT110

最大总质量 Gross Vehicle Weight (kg): 105000
 货箱容积 Struck (m³): 40
 额定功率 Rated Power (kW/rpm): 562/1900



LT110H

最大总质量 Gross Vehicle Weight (kg): 105000
 货箱容积 Struck (m³): 42
 额定功率 Rated Power (kW/rpm): 562/1900

130T



LT130

最大总质量 Gross Vehicle Weight (kg): 130000
 货箱容积 Struck (m³): 50
 额定功率 Rated Power (kW/rpm): 566/1900

LT130SHEV
燃油增程

最大总质量 Gross Vehicle Weight (kg): 130000
 货箱容积 Struck (m³): 50
 额定功率 Rated Power (kW/rpm): 562/1900

LT130SHEV
甲醇增程

最大总质量 Gross Vehicle Weight (kg): 130000
 货箱容积 Struck (m³): 50
 额定功率 Rated Power (kW/rpm): 478/1600

160T



LT160

最大总质量 Gross Vehicle Weight (kg): 160000
 货箱容积 Struck (m³): 55
 额定功率 Rated Power (kW/rpm): 566/1900

LT160SHEV
燃油增程

最大总质量 Gross Vehicle Weight (kg): 160000
 货箱容积 Struck (m³): 55
 额定功率 Rated Power (kW/rpm): 566/1900

海外
INTERNATIONAL

90T



LT70

最大总质量 Gross Vehicle Weight (kg): 70000
 货箱容积 Struck (m³): 26
 额定功率 Rated Power (kW/rpm): 316/2100



LT90

最大总质量 Gross Vehicle Weight (kg): 90000
 货箱容积 Struck (m³): 32
 额定功率 Rated Power (kW/rpm): 316/2100

LT90SHEV
燃油增程

最大总质量 Gross Vehicle Weight (kg): 90000
 货箱容积 Struck (m³): 32
 额定功率 Rated Power (kW/rpm): 338/2100



LT95

最大总质量 Gross Vehicle Weight (kg): 95000
 货箱容积 Struck (m³): 34
 额定功率 Rated Power (kW/rpm): 390/2100

110T



LT110

最大总质量 Gross Vehicle Weight (kg): 105000
 货箱容积 Struck (m³): 38
 额定功率 Rated Power (kW/rpm): 390/2100

130T



LT130

最大总质量 Gross Vehicle Weight (kg): 130000
 货箱容积 Struck (m³): 45
 额定功率 Rated Power (kW/rpm): 566/1900

LT130SHEV
燃油增程

最大总质量 Gross Vehicle Weight (kg): 130000
 货箱容积 Struck (m³): 45
 额定功率 Rated Power (kW/rpm): 562/1900

160T



LT160

最大总质量 Gross Vehicle Weight (kg): 160000
 货箱容积 Struck (m³): 50
 额定功率 Rated Power (kW/rpm): 566/1900

LT160SHEV
燃油增程

最大总质量 Gross Vehicle Weight (kg): 160000
 货箱容积 Struck (m³): 50
 额定功率 Rated Power (kW/rpm): 566/1900

NEW ENERGY PRODUCT 新能源产品

绿色节能 引领未来

GREEN AND ENERGY-SAVING LEADS THE WAY TO THE FUTURE

我们致力于为您创造清洁、高效的能源解决方案, 让未来更绿色、更美好。

We are committed to creating clean and efficient energy solutions for you, making the future greener and brighter.



挖掘机 EXCAVATOR

FR18F-E



整机重量 Operating Weight (kg): 1810
斗容 Bucket Capacity (m³): 0.04
电池容量 Battery Capacity (kWh): 21

FR215F-E



整机重量 Operating Weight (kg): 24500
斗容 Bucket Capacity (m³): 1.1
电机功率 Motor Power (kW/rpm): 125/1800

FR215F-EP



整机重量 Operating Weight (kg): 22000
斗容 Bucket Capacity (m³): 1
电机功率 Motor Power (kW/rpm): 125/1800

FR390F-EP



整机重量 Operating Weight (kg): 38500
斗容 Bucket Capacity (m³): 2.2
电机功率 Motor Power (kW/rpm): 200/2000

装载机 LOADER

FL960EV



额定载重量 Rated Load (kg): 5800
斗容 Bucket Capacity (m³): 3.6
电池容量 Battery Capacity (kWh): 289/357

FL966EV



额定载重量 Rated Load (kg): 6500
斗容 Bucket Capacity (m³): 4
电池容量 Battery Capacity (kWh): 357

FL968K-E



额定载重量 Rated Load (kg): 6500
斗容 Bucket Capacity (m³): 4.4
电池容量 Battery Capacity (kWh): 433

宽体矿卡 OFF-HIGHWAY MINING TRUCK

LT90SHEV



最大总质量 Gross Vehicle Weight (kg): 90000
货箱容积 Struck (m³): 32
额定功率 Rated Power (kW/rpm): 338/2100

纯电
Electric

LT105E



最大总质量 Gross Vehicle Weight (kg): 105000
货箱容积 Struck (m³): 40
额定功率 Rated Power (kW/rpm): 520/5200

LT130SHEV

燃油增程



最大总质量 Gross Vehicle Weight (kg): 130000
货箱容积 Struck (m³): 50
额定功率 Rated Power (kW/rpm): 562/1900

LT130SHEV

甲醇增程



最大总质量 Gross Vehicle Weight (kg): 130000
货箱容积 Struck (m³): 50
额定功率 Rated Power (kW/rpm): 478/1600

LT160SHEV

燃油增程



最大总质量 Gross Vehicle Weight (kg): 160000
货箱容积 Struck (m³): 55
额定功率 Rated Power (kW/rpm): 566/1900

一体化解决方案 INTEGRATED SOLUTIONS

矿山作业

MINING OPERATIONS

矿挖、矿卡、大吨位装载机,为矿山客户提供成套解决方案。

Providing comprehensive solutions for mining customers with mining excavation, mining trucks, and large-tonnage loaders.



林业作业

FORESTRY OPERATIONS

多功能差异化产品为林区作业提供多样化解决方案。

Providing diverse solutions for forestry operations with multi-functional differentiated products.



场/厂内作业

FIELD/FACTORY OPERATIONS

多功能差异化产品,为场/厂内作业场景提供定制化解决方案。

Providing customized solutions for field/factory operational scenarios with multi-functional differentiated products.



港口作业

PORT OPERATIONS

依托节能、高效、耐用的产品,为港口作业提供优质的解决方案。

Providing high-quality solutions for port operations with energy-efficient, high-performance, and durable products.



市政道路维护作业

MUNICIPAL ROAD MAINTENANCE OPERATIONS

针对市政工况的痛点,为市政道路维护作业提供多样化解决方案。

Providing diverse solutions tailored to the problems of municipal working conditions in road maintenance operations.



制造体系 MANUFACTURING SYSTEM

“两地三工厂”生产体系

"TWO CITIES, THREE FACTORIES" PRODUCTION SYSTEM

全球一流灯塔工厂引领行业智能制造

With world-class lighthouse factories leading the industry in intelligent manufacturing



青岛 QINGDAO

雷沃重工集团有限公司
Lovel Heavy Industry Group Co., Ltd.

装载机及挖掘装载机生产中心、微小挖生产中心
Production centers for loaders, backhoe loaders, and mini and small excavators



青岛 QINGDAO

潍柴(青岛)智慧重工有限公司
Weichai (Qingdao) Intelligent Heavy Industry Co., Ltd.

管理中心、研发中心、营销中心、13T以上挖掘机生产
Management center, R&D center, marketing center, and production of excavators over 13 tons



扬州 YANGZHOU

雷沃重工集团有限公司扬州矿卡制造分公司
Yangzhou Mining Truck Manufacturing Branch of Lovel Heavy Industry Group Co., Ltd.

矿卡生产制造
Production and manufacture of mining trucks

灯塔工厂 LIGHTHOUSE FACTORY

智领未来, 璀璨世界之巅!

Leading the future and shining at the pinnacle of the world!

潍柴(青岛)智慧重工建有全球一流的灯塔工厂, 引领行业智能制造。

节能——厂区建有超20万平方米的光伏发电系统, 供应全厂区日常的生产、运营用电需求。

智能——广泛应用数字化、智能化技术, 购置100余台机器人, 逐步实现少人化作业; 通过自动化焊接、智能立体物流输送、AGV自动运输等设备, 实现焊接自动化率 $\geq 90\%$, 涂装自动化率 $\geq 70\%$, 总装物流自动化率 $\geq 80\%$ 。

Weichai (Qingdao) Intelligent Heavy Industry has built a world-class lighthouse factory, leading the industry in smart manufacturing.

Energy-saving - The factory is equipped with a photovoltaic power generation system covering over 200,000 square meters, meeting the daily electricity needs for production and operation throughout the plant.

Intelligence - Digital and intelligent technologies are widely applied, including the deployment of over 100 robots to gradually achieve reduced manpower operations. Automation in welding $\geq 90\%$, painting automation $\geq 70\%$, and overall assembly logistics automation $\geq 80\%$ through automated welding, intelligent three-dimensional logistics transport, and AGV automatic transportation systems.

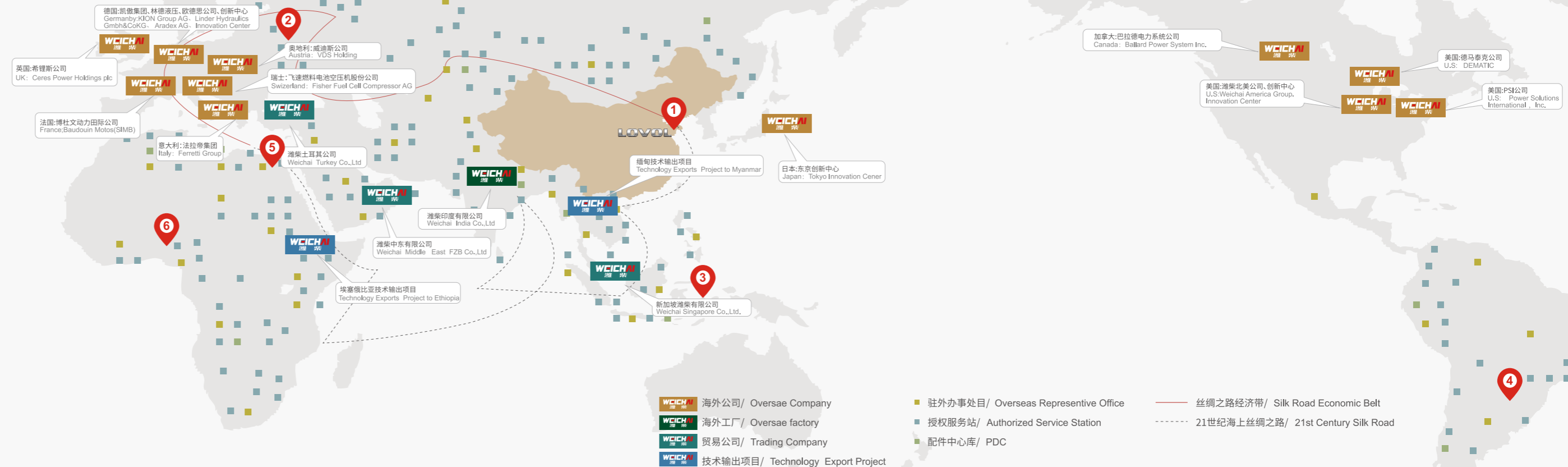


全球销售服务网络

GLOBAL SALES AND SERVICE NETWORK

雷沃重工共享潍柴集团全球营销服务网络已覆盖全球120多个国家地区。在拉美、东南亚、非洲、独联体等战略市场，形成了集“销售、服务、配件供应、用户培训与信息反馈”，五位一体的全球营销服务网络体系。

The Shared Weichai Group Global Marketing and Service Network of Lovol Heavy Industry has extended its reach to over 120 countries and regions worldwide. In strategic markets such as Latin America, South-east Asia, Africa, and the CIS, it has established an integrated global marketing and service network comprising sales, service, spare parts supply, user training, and information feedback.



1 雷沃重工总部青岛产业集群
 LOVOL Heavy Industry Headquarters
 QingDao Industrial Cluster



2 独联体营销服务集群
 Commonwealth of Independent States



3 东南亚营销服务集群
 Southeast Asia
 Marketing Service Cluster



4 巴西、阿根廷营销服务集群
 Marketing Service Cluster
 Distribution Areas: Brazil, Argentina, etc.



5 北非营销服务集群
 North Africa
 Marketing Service Cluster







6 中非营销服务集群
 Middle Africa
 Marketing Service Cluster

服务理念 SERVICE PHILOSOPHY



国内外超7000家授权服务站, 200家配件代理商或中心库, 实现15分钟快速响应
Achieving a 15-minute rapid response with over 7,000 authorized service stations worldwide and 200 parts agents or central depots

<p>服务理念 SERVICE PHILOSOPHY</p> <p>说到、做到、更周到 Promise, Deliver, and Go Beyond</p> 	<p>服务内涵 SERVICE ESSENCE</p> <p>限时、现场、精准、增值 Timely, On-site, Precise, and Value-added Service Features: One-stop Service</p> 
<p>服务特色 SERVICE FEATURES</p> <p>一站式服务 One-stop Service</p> 	<p>服务资源 SERVICE RESOURCES</p> <p>共享潍柴集团服务网点 服务半径小于50公里 Shared Weichai Group Service Network Station Service Radius: Less than 50 Kilometers</p> 

实施“铁三角”交付体系, 系列化交机培训、售后技术指导, 保障产品高效运行。
Implementing the "Iron Triangle" delivery system and offering systematic equipment handover training and after-sales technical guidance to ensure efficient product operation.

