

LANDAI 兰带



专为您的车辆传动而设计

DESIGNED FOR YOUR VEHICLE TRANSMISSION

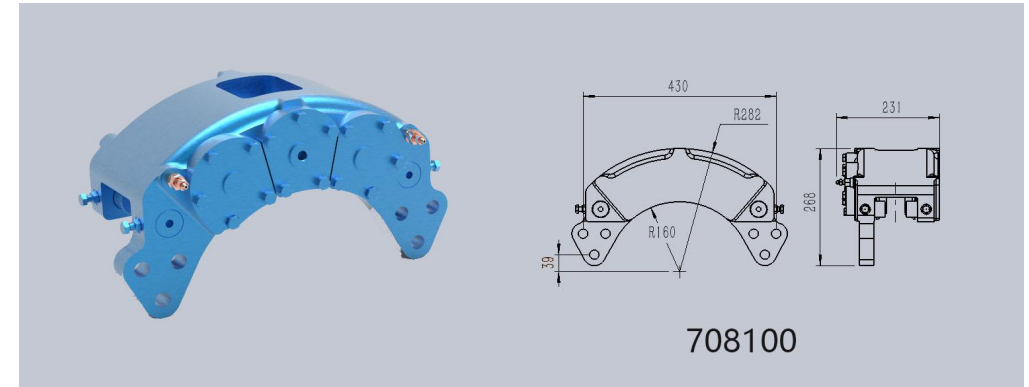
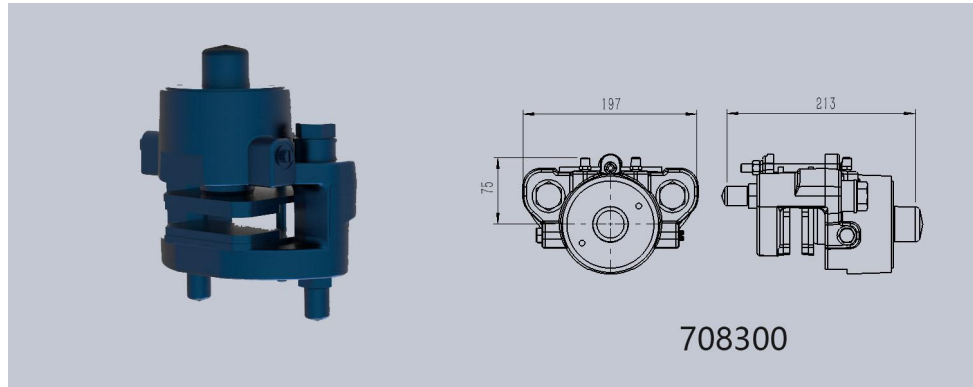


厦门兰带机械有限公司  
Xiamen Landai Machinery Co., Ltd.



Since 1984

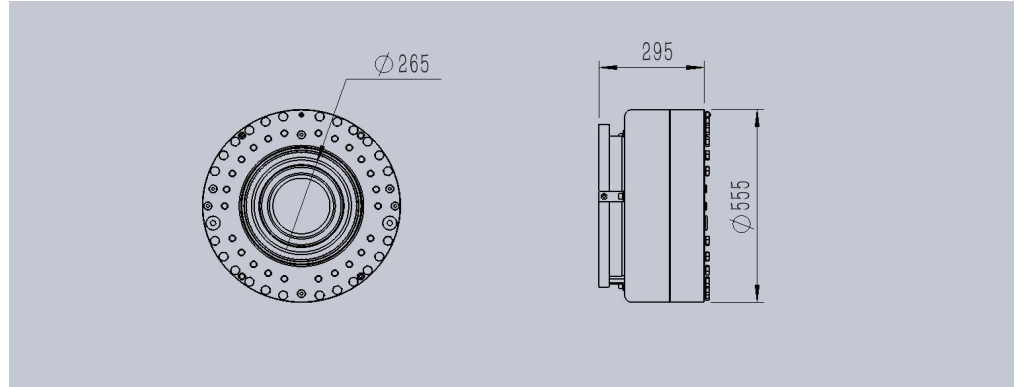
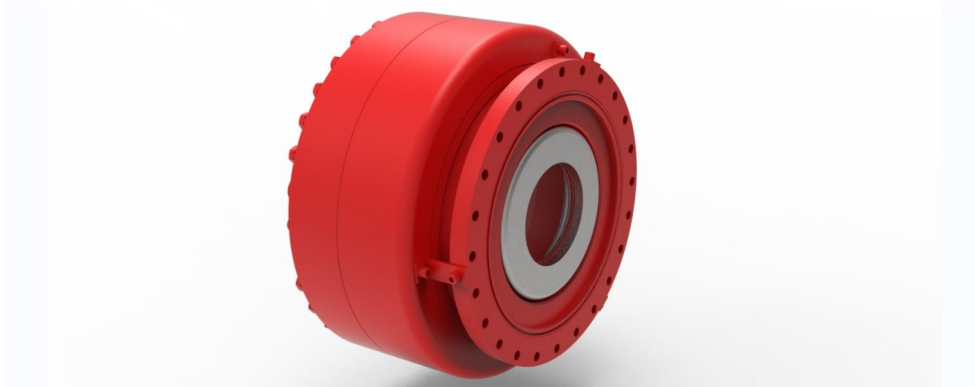


**型号/Model: 708100、708300**

**产品特点/Product features :**

- 708100-钳盘式行车制动钳，三孔结构制动力矩更大、结构更好布置； •708100-brake pliers with three-hole structure for greater braking torque and better layout;
- 708300-常闭驻车钳盘式制动器，断油制动，更安全可靠； •708300-normally closed parking Disc brake, oil-cut brake, more safe and reliable;

**技术参数: 参数会变动, 请咨询/Technical parameters: parameters will change, please consult.**

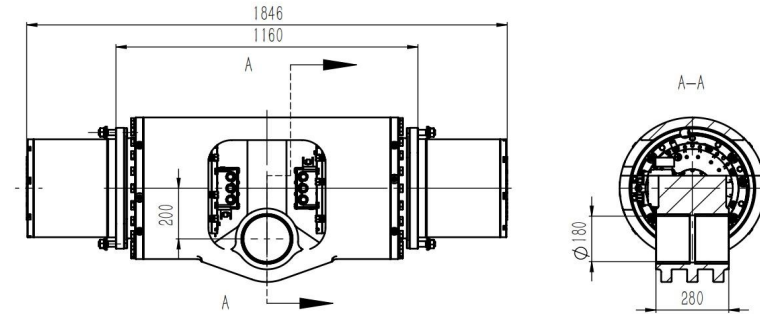
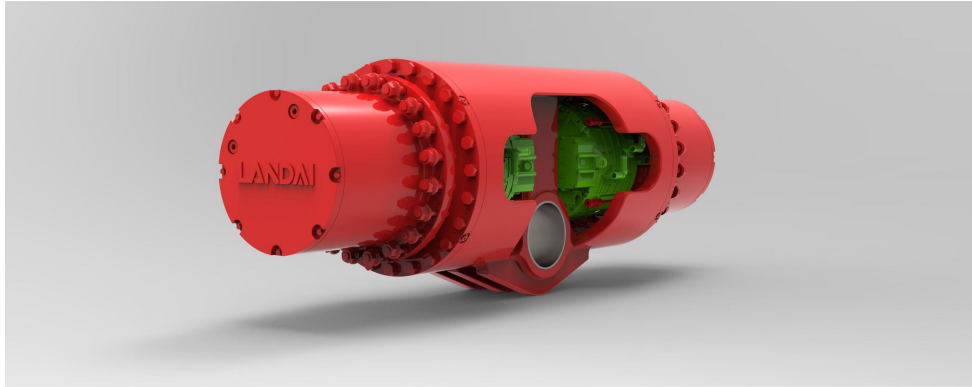
类别/Type	参数名/Item	单位/Unit	参数值/Value	备注/Notes
桥参数/Axle	总速比/ Total speed ratio		/	
	桥荷/load on axle	千牛/KN	/	
	最大允许输入扭矩 /Maximum allowable input torque	牛米 N.m	/	
	配用轮辋/Wheel rim	英寸/Inch	/	
行车制动/Service brake	行车制动型式/Service brake type		钳盘式/Hydr,Disc Brake	
	行车制动压力/Service brake pressure	兆帕/Mpa	12	
	单桥制动力矩/Single axle braking torque	牛米/N.m	27000	
	制动器数量/Number of single axle brakes	个/Piece	1	
驻车制动/Parking brake	驻车制动器型式/Parking brake type		常闭钳盘式/Normally closed clamp disc type	
	驻车制动压力/Parking brake pressure	兆帕/Mpa	min8,max20	
	驻车制动力矩/Parking brake braking torque	牛米/N.m	5100	

**型号/Model: 718200**

**产品特点/Product features :**

- 常开多片湿式制动器，用于防爆、防尘、防油水等环境； •Often open multi-disc wet brake, used for explosion-proof, dust-proof, oil and water-proof environment;
- 本湿式制动器外径符合 25" 轮辋安装，制动力矩可以是小于 120000N.m，外形尺寸会有所不同； •The outside diameter of the wet brake conforms to the 25" rim mounting, and the braking torque can be less than 120000N.M, and the external dimensions may vary." ;

**技术参数：参数会变动，请咨询/Technical parameters: parameters will change, please consult.**

类别/Type	参数名/Item	单位/Unit	参数值/Value	备注/Notes
桥参数/Axle	总速比/ Total speed ratio		/	
	桥荷/load on axle	千牛/KN	/	
	最大允许输入扭矩 /Maximum allowable input torque	牛米 N.m	/	
	配用轮辋/Wheel rim	英寸/Inch	25"	
行车制动/Service brake	行车制动型式/Service brake type		常开湿式/Always Open wet type	
	行车制动压力/Service brake pressure	兆帕/Mpa	12	
	单桥制动力矩/Single axle braking torque	牛米/N.m	50000	
	制动器数量/Number of single axle brakes	个/Piece	1	
驻车制动/Parking brake	驻车制动器型式/Parking brake type		/	
	驻车制动压力/Parking brake pressure	兆帕/Mpa	/	
	驻车制动力矩/Parking brake braking torque	牛米/N.m	/	

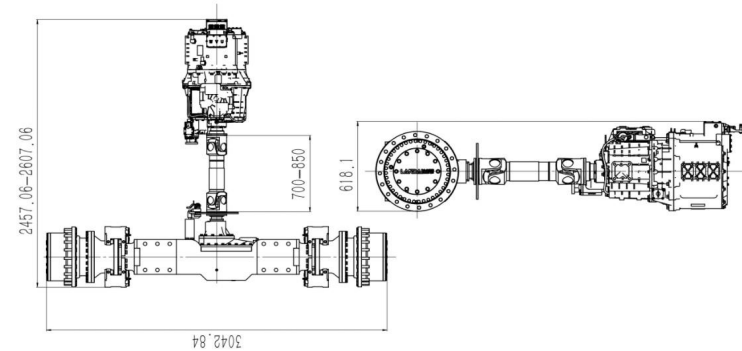
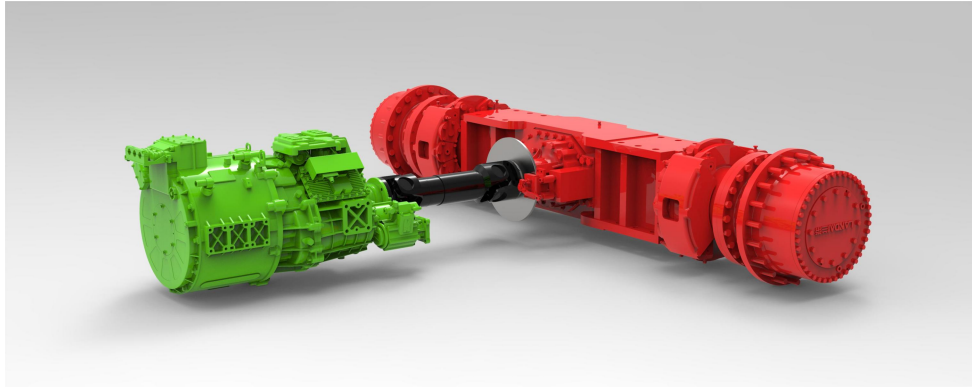
**型号/Model: ED380.000000**

**产品特点/Product features :**

- 电机额定电压 540VDC, 额定功率 60KW, 峰值功率 120Kw/60s,最高转速 5500rpm,额定扭矩 260N.m,峰值扭矩 510N.m/60s; •Motor rated voltage 540VDC, rated Power 60KW, peak power 120Kw/60s, maximum speed 5500rpm, rated Torque 260n. M, peak torque 510 n. M/60s;
- 水冷双电机、双减速器, 内置湿式制动器, , 防护等级 IP67,工作效率 95%; •Water-cooled dual motor, dual reducer, built-in wet brake, protection grade IP67, working efficiency 95% ;

**技术参数: 参数会变动, 请咨询/Technical parameters: parameters will change, please consult.**

类别/Type	参数名/Item	单位/Unit	参数值/Value	备注/Notes
桥参数/Axle	总速比/ Total speed ratio		41.085	
	桥荷/load on axle	千牛/KN	1100	
	最大允许输入扭矩 /Maximum allowable input torque	牛米 N.m	510	
	配用轮辋/Wheel rim	英寸/Inch	/	
行车制动/Service brake	行车制动型式/Service brake type		常闭湿式/Normally closed wet type	
	行车制动压力/Service brake pressure	兆帕/Mpa	min8,max20	
	单桥制动力矩/Single axle braking torque	牛米/N.m	25000	
	制动器数量/Number of single axle brakes	个/Piece	2	
驻车制动/Parking brake	驻车制动器型式/Parking brake type		/	
	驻车制动压力/Parking brake pressure	兆帕/Mpa	/	
	驻车制动力矩/Parking brake braking torque	牛米/N.m	/	

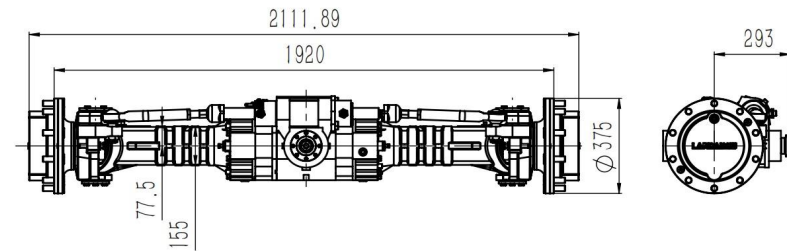
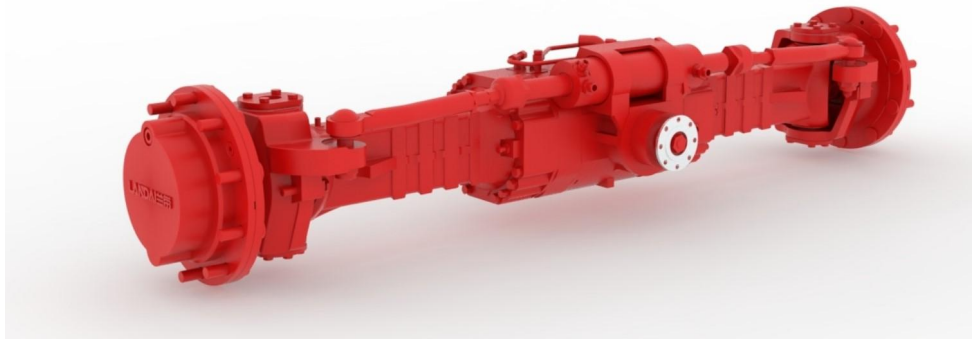


**型号/Model: DQ1**

**产品特点/Product features :**

- 水冷电机峰值输出扭矩: 500N.m, 峰值输出转速 2100rpm, 峰值功率 110Kw, 承力器自身速比 0.81; •Peak output torque of water-cooled motor: 500N. M, the peak output speed is 2100rpm, the peak power is 110Kw, the speed ratio of the load-bearing is 0.81;
- 一体式变速箱, 速比分别为: 1 档 8.388、2 档 3.535、3 档 1.739、4 档 1, 额定输入扭矩 2400N.m, 最大输入转速 3100rpm; •All-in-one gearbox with speed ratios of 8.388,3.535,1.739 and 4.1 for 1st, 2nd, 3rd, 3rd and 4th gear respectively, with rated input torque of 2400n. M, maximum input speed 3100 rpm;

**技术参数: 参数会变动, 请咨询/Technical parameters: parameters will change, please consult.**

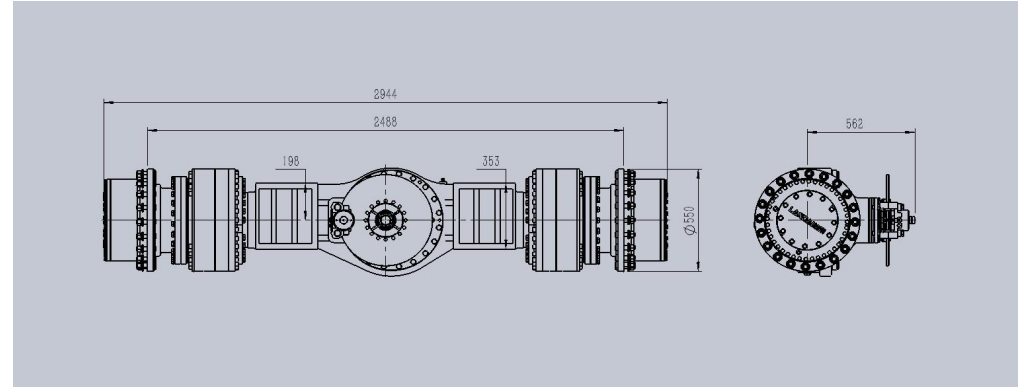
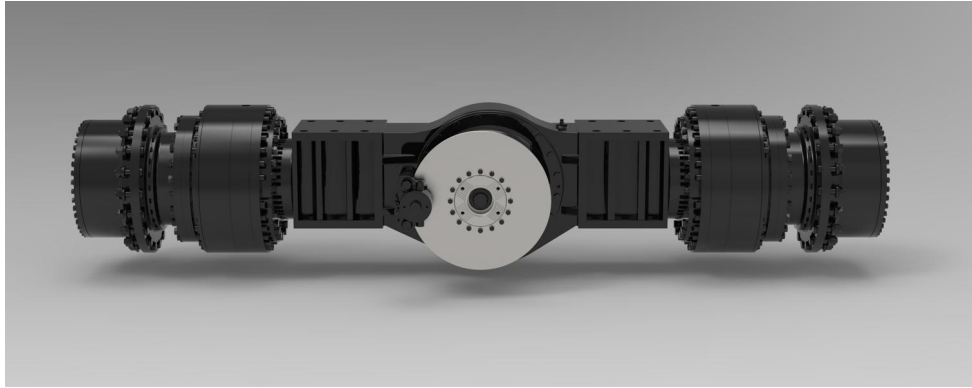
类别/Type	参数名/Item	单位/Unit	参数值/Value	备注/Notes
桥参数/Axle	总速比/ Total speed ratio		7.77	
	桥荷/load on axle	千牛/KN	800	
	最大允许输入扭矩 /Maximum allowable input torque	牛米 N.m	8000	
	配用轮辋/Wheel rim	英寸/Inch	25"	
行车制动/Service brake	行车制动型式/Service brake type		钳盘式/Hydr,Disc Brake	
	行车制动压力/Service brake pressure	兆帕/Mpa	14.5	
	单桥制动力矩/Single axle braking torque	牛米/N.m	108000	
	制动器数量/Number of single axle brakes	个/Piece	4	
驻车制动/Parking brake	驻车制动器型式/Parking brake type		常闭钳盘式/Normally closed clamp disc type	
	驻车制动压力/Parking brake pressure	兆帕/Mpa	min8,max20	
	驻车制动力矩/Parking brake braking torque	牛米/N.m	5100	

**型号/Model: N204000**

**产品特点/Product features :**

- 转向角度从 40°到 55°; •Steering angle From 40° to 55°
- 开放式差速器, 限滑 45%, 100% 锁定, 行驶一体内置湿式制动器; •Open, Limited Slip 45%, 100% Lock, Line-in-one built-in wet brake;

**技术参数: 参数会变动, 请咨询/Technical parameters: parameters will change, please consult.**

类别/Type	参数名/Item	单位/Unit	参数值/Value	备注/Notes
桥参数/Axle	总速比/ Total speed ratio		12.798	
	桥荷/load on axle	千牛/KN	160	
	最大允许输入扭矩 /Maximum allowable input torque	牛米 N.m	2700	
	配用轮辋/Wheel rim	英寸/Inch	/	
行车制动/Service brake	行车制动型式/Service brake type		常闭湿式/Normally closed wet type	
	行车制动压力/Service brake pressure	兆帕/Mpa	min8,max20	
	单桥制动力矩/Single axle braking torque	牛米/N.m	50000	
	制动器数量/Number of single axle brakes	个/Piece	1	
驻车制动/Parking brake	驻车制动器型式/Parking brake type		/	
	驻车制动压力/Parking brake pressure	兆帕/Mpa	/	
	驻车制动力矩/Parking brake braking torque	牛米/N.m	/	

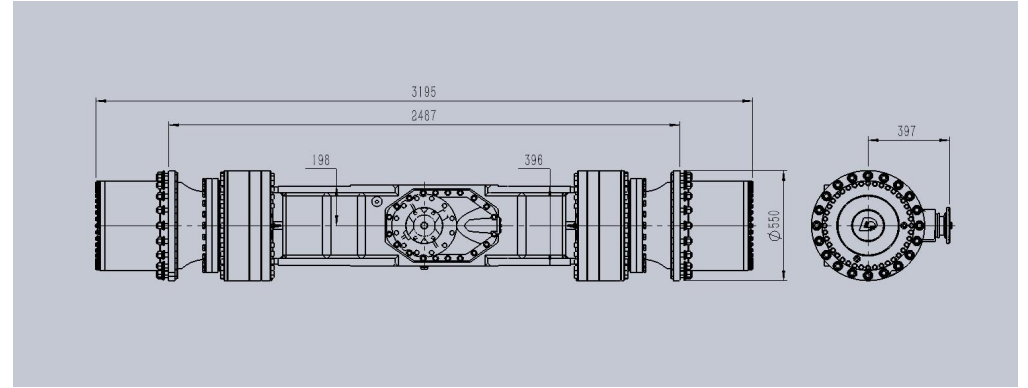
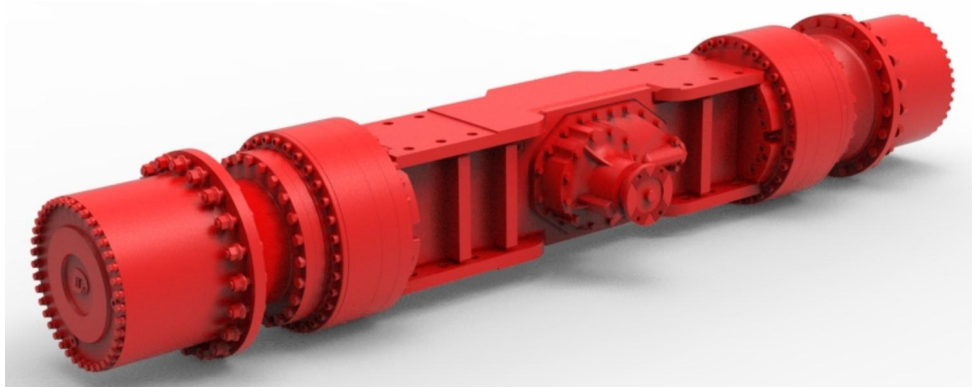
**型号/Model: BGC704000A-SQ**

**产品特点/Product features :**

- 二级减速传动，第一级为弧齿锥齿轮传动，第二级为行星齿轮传动（NGW 型式）； •There are two stage reduction transmission: The first stage is spiral bevel gear transmission, and the second stage is planetary gear transmission (NGW type);
- 传统锥齿轮式差速器； •The differential is a traditional bevel gear type.

**技术参数：参数会变动，请咨询/Technical parameters: parameters will change, please consult.**

类别/Type	参数名/Item	单位/Unit	参数值/Value	备注/Notes
桥参数/Axle	总速比/ Total speed ratio		27.038	
	桥荷/load on axle	千牛/KN	800	
	最大允许输入扭矩 /Maximum allowable input torque	牛米 N.m	8000	
	配用轮辋/Wheel rim	英寸/Inch	25"	
行车制动/Service brake	行车制动型式/Service brake type		常开湿式/Always Open wet type	
	行车制动压力/Service brake pressure	兆帕/Mpa	14.5	
	单桥制动力矩/Single axle braking torque	牛米/N.m	129400	
	制动器数量/Number of single axle brakes	个/Piece	2	
驻车制动/Parking brake	驻车制动器型式/Parking brake type		常闭钳盘式/Normally closed clamp disc type	
	驻车制动压力/Parking brake pressure	兆帕/Mpa	min8,max20	
	驻车制动力矩/Parking brake braking torque	牛米/N.m	5100	

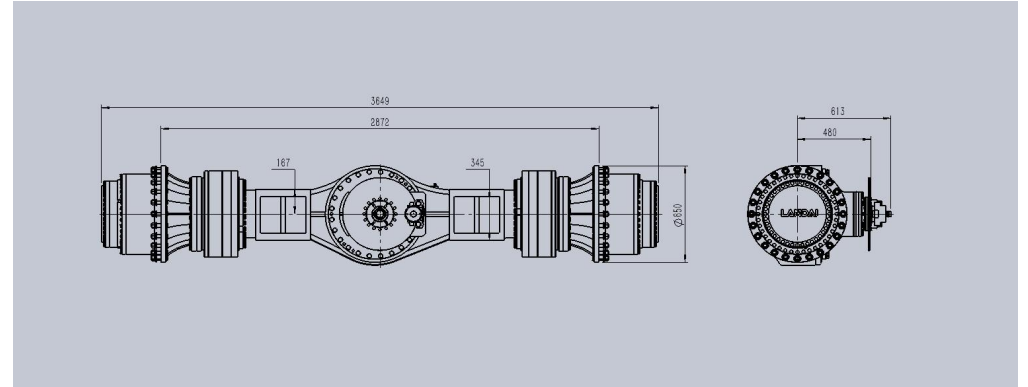
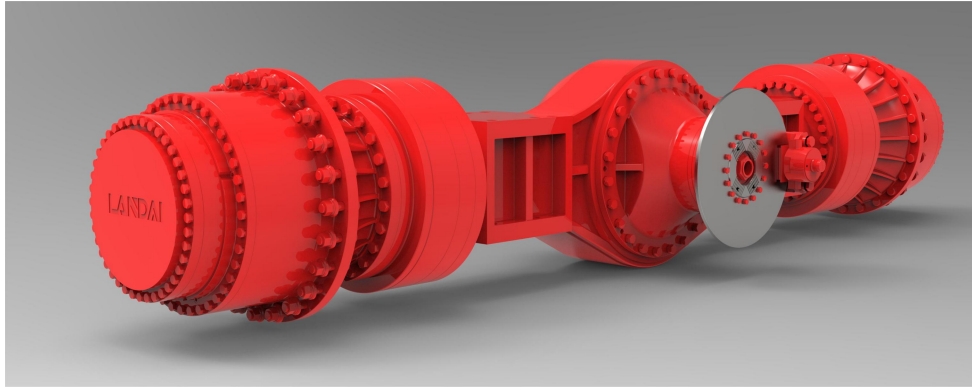


**型号/Model: T1004000-SQH (SM)**

**产品特点/Product features :**

- 三级减速传动，第一级为弧齿锥齿轮传动，第二级为行星齿轮传动（NGW 型式）； •There are three stage reduction transmission: The first stage is spiral bevel gear transmission, and the second stage is planetary gear transmission (NGW type);
- 传统锥齿轮式差速器； •The differential is a traditional bevel gear type.

**技术参数：参数会变动，请咨询/Technical parameters: parameters will change, please consult.**

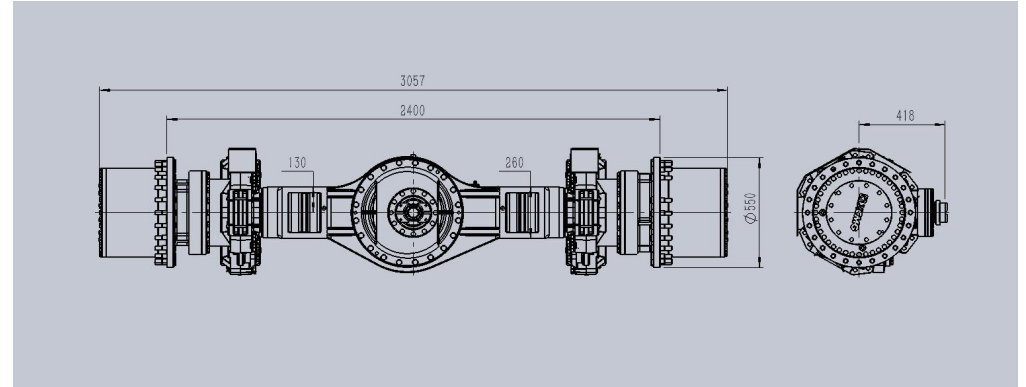
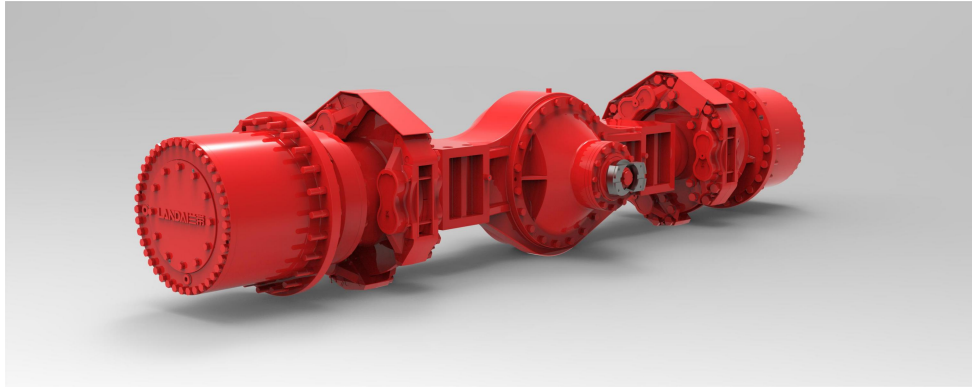
类别/Type	参数名/Item	单位/Unit	参数值/Value	备注/Notes
桥参数/Axle	总速比/ Total speed ratio		25.952	
	桥荷/load on axle	千牛/KN	1300	
	最大允许输入扭矩 /Maximum allowable input torque	牛米 N.m	14000	
	配用轮辋/Wheel rim	英寸/Inch	25" 29"	
行车制动/Service brake	行车制动型式/Service brake type		常开湿式/Always Open wet type	
	行车制动压力/Service brake pressure	兆帕/Mpa	14.5	
	单桥制动力矩/Single axle braking torque	牛米/N.m	200000	
	制动器数量/Number of single axle brakes	个/Piece	2	
驻车制动/Parking brake	驻车制动器型式/Parking brake type		/	
	驻车制动压力/Parking brake pressure	兆帕/Mpa	/	
	驻车制动力矩/Parking brake braking torque	牛米/N.m	/	

**型号/Model: X504000-SQH**

**产品特点/Product features :**

- 三级减速传动，第一级为弧齿锥齿轮传动，第二级为行星齿轮传动（NGW 型式）； •There are three stage reduction transmission: The first stage is spiral bevel gear transmission, and the second stage is planetary gear transmission (NGW type);
- 传统锥齿轮式差速器； •The differential is a traditional bevel gear type.

**技术参数：参数会变动，请咨询/Technical parameters: parameters will change, please consult.**

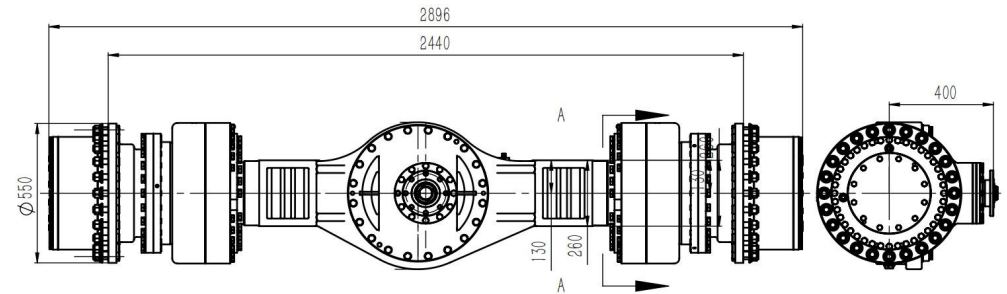
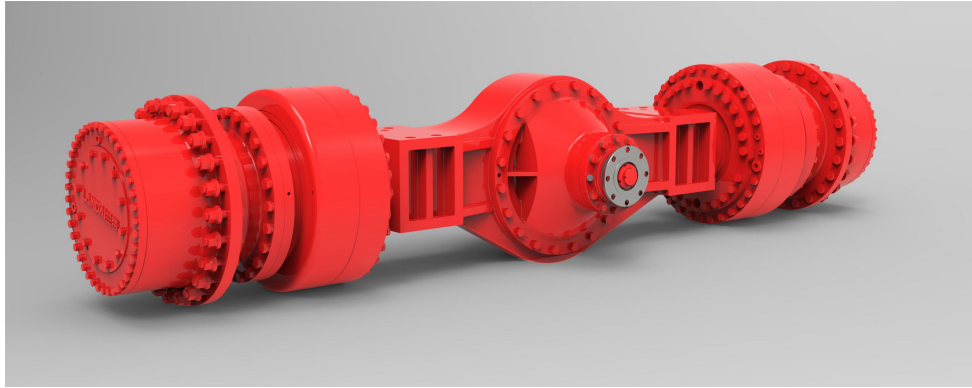
类别/Type	参数名/Item	单位/Unit	参数值/Value	备注/Notes
桥参数/Axle	总速比/ Total speed ratio		33.492	
	桥荷/load on axle	千牛/KN	1300	
	最大允许输入扭矩 /Maximum allowable input torque	牛米 N.m	13600	
	配用轮辋/Wheel rim	英寸/Inch	29"	
行车制动/Service brake	行车制动型式/Service brake type		常开湿式/Always Open wet type	
	行车制动压力/Service brake pressure	兆帕/Mpa	13	
	单桥制动力矩/Single axle braking torque	牛米/N.m	12400	
	制动器数量/Number of single axle brakes	个/Piece	2	
驻车制动/Parking brake	驻车制动器型式/Parking brake type		常闭钳盘式/Normally closed clamp disc type	
	驻车制动压力/Parking brake pressure	兆帕/Mpa	min8,max20	
	驻车制动力矩/Parking brake braking torque	牛米/N.m	5100	

**型号/Model: 704000A-QH**

**产品特点/Product features :**

- 二级减速传动，第一级为弧齿锥齿轮传动，第二级为行星齿轮传动（NGW 型式）； •There are two stage reduction transmission: The first stage is spiral bevel gear transmission, and the second stage is planetary gear transmission (NGW type);
- 传统锥齿轮式差速器； •The differential is a traditional bevel gear type.

**技术参数：参数会变动，请咨询/Technical parameters: parameters will change, please consult.**

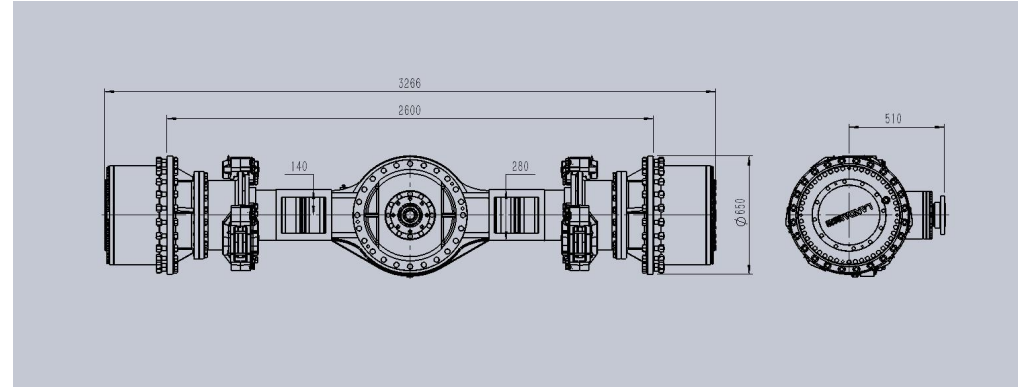
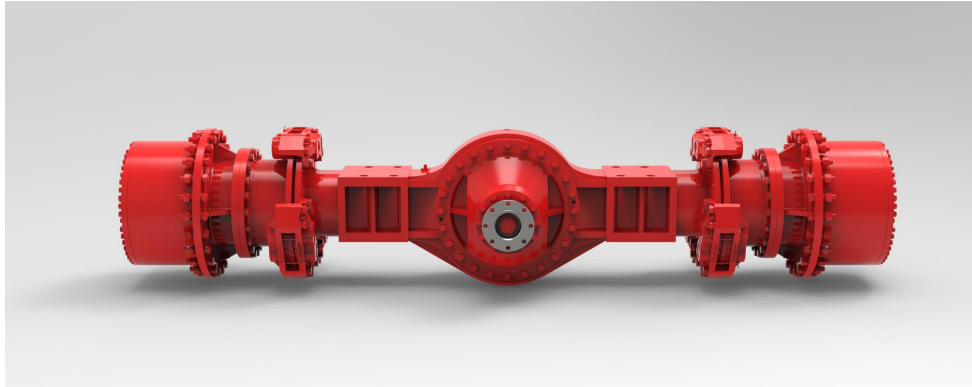
类别/Type	参数名/Item	单位/Unit	参数值/Value	备注/Notes
桥参数/Axle	总速比/ Total speed ratio		27.038	
	桥荷/load on axle	千牛/KN	800	
	最大允许输入扭矩 /Maximum allowable input torque	牛米 N.m	8000	
	配用轮辋/Wheel rim	英寸/Inch	25"	
行车制动/Service brake	行车制动型式/Service brake type		钳盘式/Hydr,Disc Brake	
	行车制动压力/Service brake pressure	兆帕/Mpa	9.8	
	单桥制动力矩/Single axle braking torque	牛米/N.m	75600	
	制动器数量/Number of single axle brakes	个/Piece	6	
驻车制动/Parking brake	驻车制动器型式/Parking brake type		/	
	驻车制动压力/Parking brake pressure	兆帕/Mpa	/	
	驻车制动力矩/Parking brake braking torque	牛米/N.m	/	

**型号/Model: 704000G-SQH**

**产品特点/Product features :**

- 二级减速传动，第一级为弧齿锥齿轮传动，第二级为行星齿轮传动（NGW 型式）； •There are two stage reduction transmission: The first stage is spiral bevel gear transmission, and the second stage is planetary gear transmission (NGW type);
- 传统锥齿轮式差速器； •The differential is a traditional bevel gear type.

**技术参数：参数会变动，请咨询/Technical parameters: parameters will change, please consult.**

类别/Type	参数名/Item	单位/Unit	参数值/Value	备注/Notes
桥参数/Axle	总速比/ Total speed ratio		27.038	
	桥荷/load on axle	千牛/KN	800	
	最大允许输入扭矩 /Maximum allowable input torque	牛米 N.m	8000	
	配用轮辋/Wheel rim	英寸/Inch	25"	
行车制动/Service brake	行车制动型式/Service brake type		常开湿式/Always Open wet type	
	行车制动压力/Service brake pressure	兆帕/Mpa	12	
	单桥制动力矩/Single axle braking torque	牛米/N.m	100000	
	制动器数量/Number of single axle brakes	个/Piece	2	
驻车制动/Parking brake	驻车制动器型式/Parking brake type		/	
	驻车制动压力/Parking brake pressure	兆帕/Mpa	/	
	驻车制动力矩/Parking brake braking torque	牛米/N.m	/	

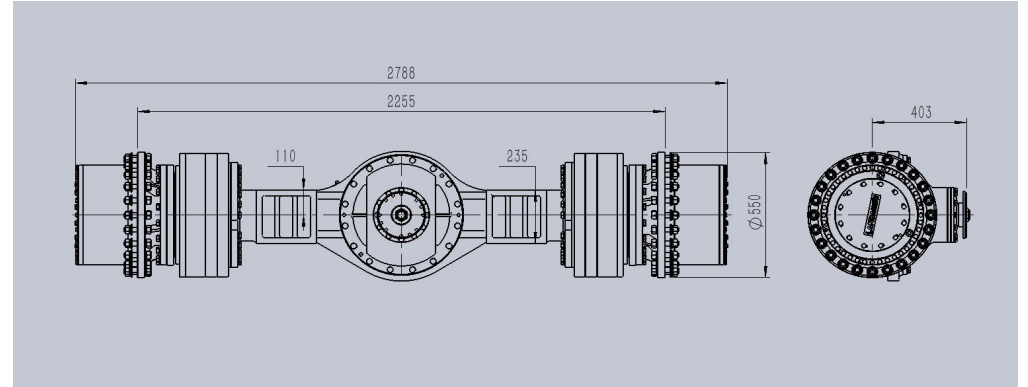
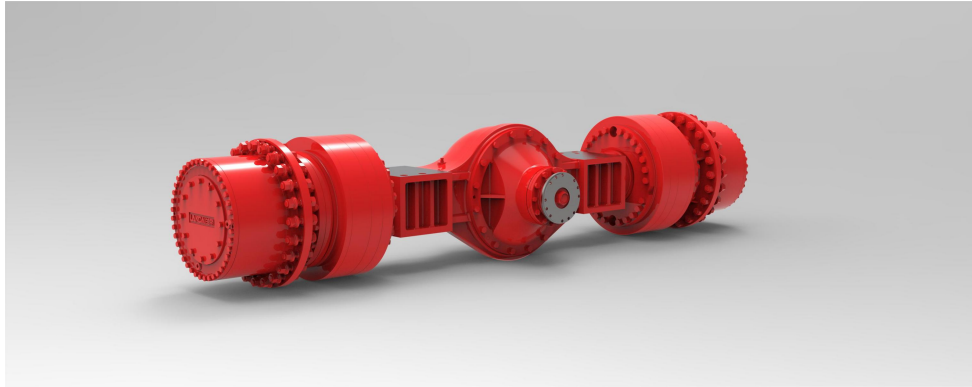
**型号/Model: 804000E-QH**

**产品特点/Product features :**

- 二级减速传动，第一级为弧齿锥齿轮传动，第二级为行星齿轮传动（NGW 型式）； •There are two stage reduction transmission: The first stage is spiral bevel gear transmission, and the second stage is planetary gear transmission (NGW type);
- 传统锥齿轮式差速器； •The differential is a traditional bevel gear type.

**技术参数：参数会变动，请咨询/Technical parameters: parameters will change, please consult.**

类别/Type	参数名/Item	单位/Unit	参数值/Value	备注/Notes
桥参数/Axle	总速比/ Total speed ratio		25.9	
	桥荷/load on axle	千牛/KN	1000	
	最大允许输入扭矩 /Maximum allowable input torque	牛米 N.m	12000	
	配用轮辋/Wheel rim	英寸/Inch	29"	
行车制动/Service brake	行车制动型式/Service brake type		钳盘式/Hydr,Disc Brake	
	行车制动压力/Service brake pressure	兆帕/Mpa	9.8	
	单桥制动力矩/Single axle braking torque	牛米/N.m	75600	
	制动器数量/Number of single axle brakes	个/Piece	6	
驻车制动/Parking brake	驻车制动器型式/Parking brake type		/	
	驻车制动压力/Parking brake pressure	兆帕/Mpa	/	
	驻车制动力矩/Parking brake braking torque	牛米/N.m	/	

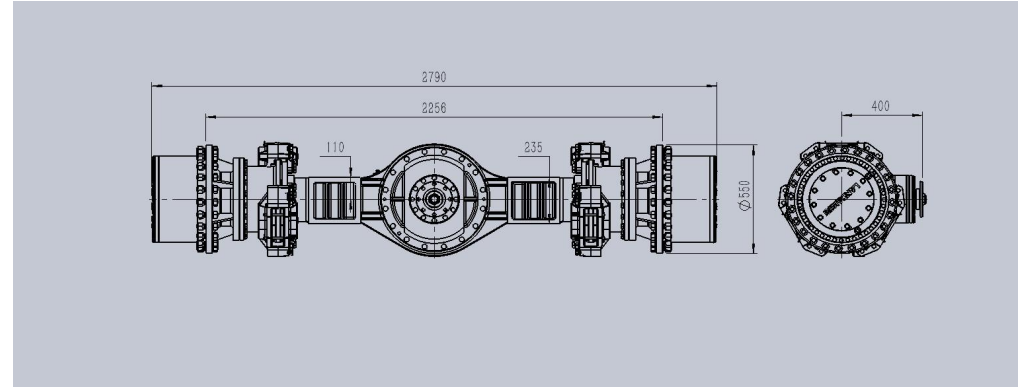
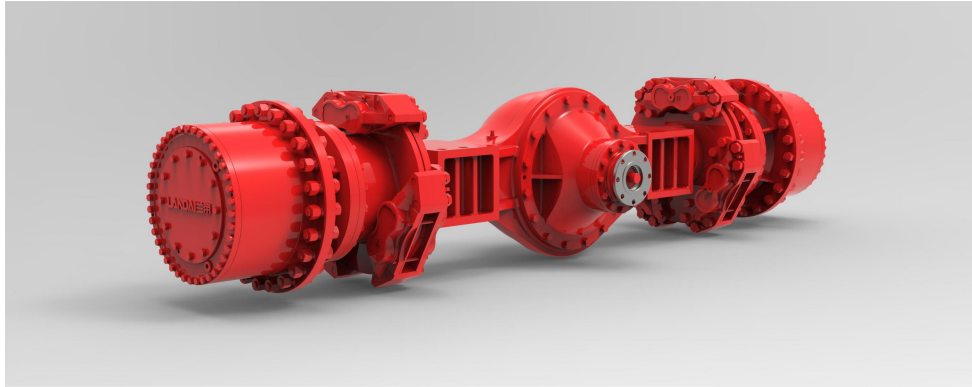


**型号/Model: 60A4000-SQH**

**产品特点/Product features :**

- 二级减速传动，第一级为弧齿锥齿轮传动，第二级为行星齿轮传动（NGW 型式）； •There are two stage reduction transmission: The first stage is spiral bevel gear transmission, and the second stage is planetary gear transmission (NGW type);
- 传统锥齿轮式差速器； •The differential is a traditional bevel gear type.

**技术参数：参数会变动，请咨询/Technical parameters: parameters will change, please consult.**

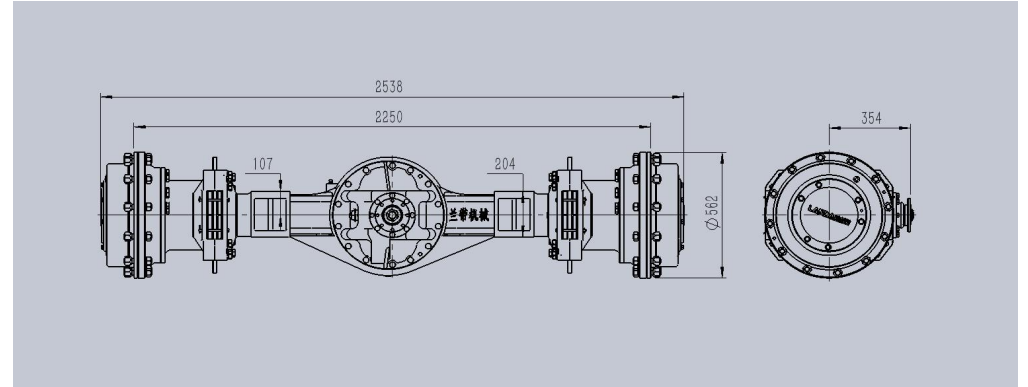
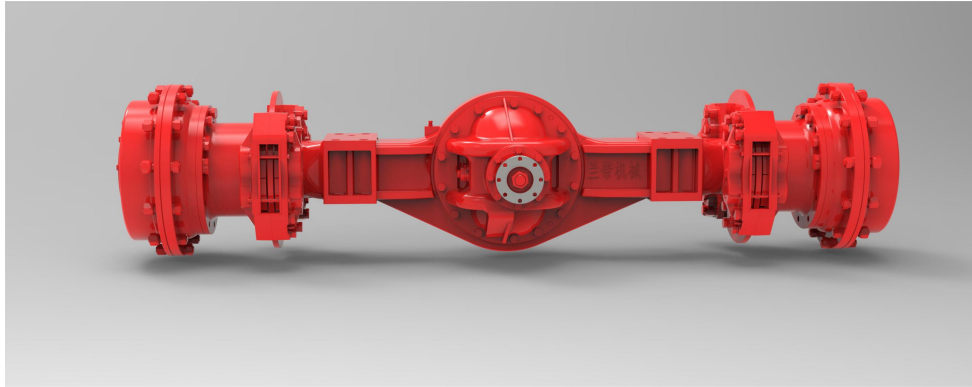
类别/Type	参数名/Item	单位/Unit	参数值/Value	备注/Notes
桥参数/Axle	总速比/ Total speed ratio		24.65	
	桥荷/load on axle	千牛/KN	700	
	最大允许输入扭矩 /Maximum allowable input torque	牛米 N.m	7000	
	配用轮辋/Wheel rim	英寸/Inch	25"	
行车制动/Service brake	行车制动型式/Service brake type		钳盘式/Hydr,Disc Brake	
	行车制动压力/Service brake pressure	兆帕/Mpa	12	
	单桥制动力矩/Single axle braking torque	牛米/N.m	12800	
	制动器数量/Number of single axle brakes	个/Piece	2	
驻车制动/Parking brake	驻车制动器型式/Parking brake type		/	
	驻车制动压力/Parking brake pressure	兆帕/Mpa	/	
	驻车制动力矩/Parking brake braking torque	牛米/N.m	/	

**型号/Model: 604000J-QH**

**产品特点/Product features :**

- 二级减速传动，第一级为弧齿锥齿轮传动，第二级为行星齿轮传动（NGW 型式）； •There are two stage reduction transmission: The first stage is spiral bevel gear transmission, and the second stage is planetary gear transmission (NGW type);
- 传统锥齿轮式差速器； •The differential is a traditional bevel gear type.

**技术参数: 参数会变动, 请咨询/Technical parameters: parameters will change, please consult.**

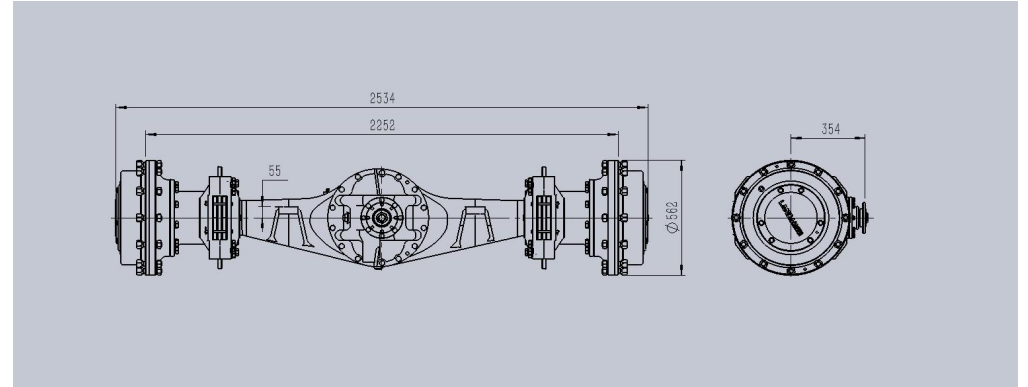
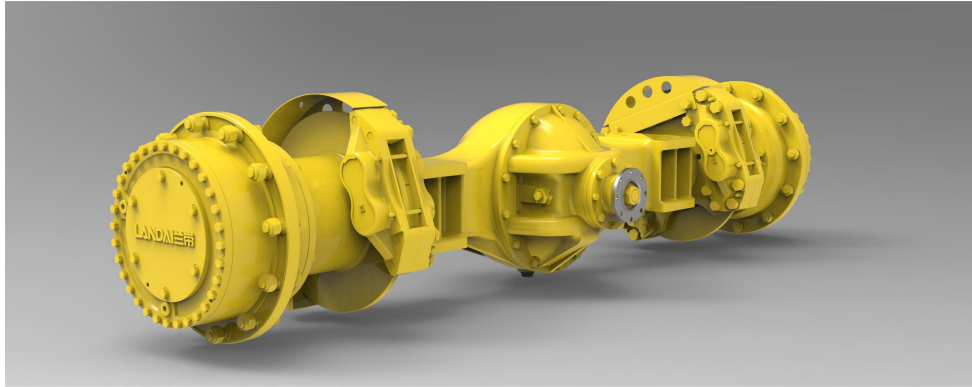
类别/Type	参数名/Item	单位/Unit	参数值/Value	备注/Notes
桥参数/Axle	总速比/ Total speed ratio		24.65	
	桥荷/load on axle	千牛/KN	700	
	最大允许输入扭矩 /Maximum allowable input torque	牛米 N.m	7000	
	配用轮辋/Wheel rim	英寸/Inch	25"	
行车制动/Service brake	行车制动型式/Service brake type		钳盘式/Hydr,Disc Brake	
	行车制动压力/Service brake pressure	兆帕/Mpa	9.8	
	单桥制动力矩/Single axle braking torque	牛米/N.m	75600	
	制动器数量/Number of single axle brakes	个/Piece	6	
驻车制动/Parking brake	驻车制动器型式/Parking brake type		/	
	驻车制动压力/Parking brake pressure	兆帕/Mpa	/	
	驻车制动力矩/Parking brake braking torque	牛米/N.m	/	

**型号/Model: 504000CQ-QH**

**产品特点/Product features :**

- 二级减速传动，第一级为弧齿锥齿轮传动，第二级为行星齿轮传动（NGW 型式）； •There are two stage reduction transmission: The first stage is spiral bevel gear transmission, and the second stage is planetary gear transmission (NGW type);
- 传统锥齿轮式差速器； •The differential is a traditional bevel gear type.

**技术参数: 参数会变动, 请咨询/Technical parameters: parameters will change, please consult.**

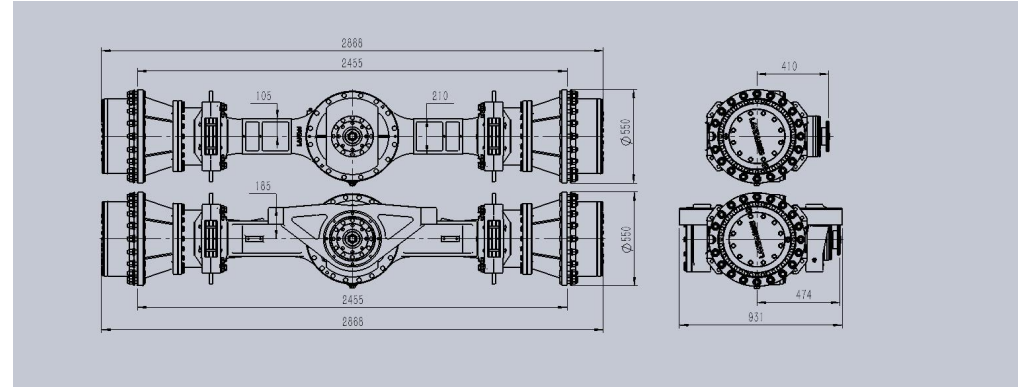
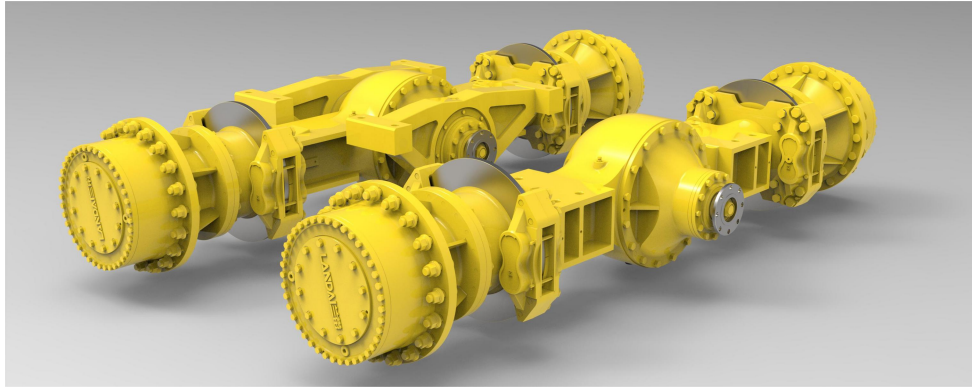
类别/Type	参数名/Item	单位/Unit	参数值/Value	备注/Notes
桥参数/Axle	总速比/ Total speed ratio		22.547	
	桥荷/load on axle	千牛/KN	500	
	最大允许输入扭矩 /Maximum allowable input torque	牛米 N.m	5100	
	配用轮辋/Wheel rim	英寸/Inch	25"	
行车制动/Service brake	行车制动型式/Service brake type		钳盘式/Hydr,Disc Brake	
	行车制动压力/Service brake pressure	兆帕/Mpa	9.8	
	单桥制动力矩/Single axle braking torque	牛米/N.m	75600	
	制动器数量/Number of single axle brakes	个/Piece	6	
驻车制动/Parking brake	驻车制动器型式/Parking brake type		/	
	驻车制动压力/Parking brake pressure	兆帕/Mpa	/	
	驻车制动力矩/Parking brake braking torque	牛米/N.m	/	

**型号/Model: 504000Q-QH**

**产品特点/Product features :**

- 二级减速传动，第一级为弧齿锥齿轮传动，第二级为行星齿轮传动（NGW 型式）； •There are two stage reduction transmission: The first stage is spiral bevel gear transmission, and the second stage is planetary gear transmission (NGW type);
- 传统锥齿轮式差速器； •The differential is a traditional bevel gear type.

**技术参数：参数会变动，请咨询/Technical parameters: parameters will change, please consult.**

类别/Type	参数名/Item	单位/Unit	参数值/Value	备注/Notes
桥参数/Axle	总速比/ Total speed ratio		22.547	
	桥荷/load on axle	千牛/KN	270	
	最大允许输入扭矩 /Maximum allowable input torque	牛米 N.m	5100	
	配用轮辋/Wheel rim	英寸/Inch	25"	
行车制动/Service brake	行车制动型式/Service brake type		钳盘式/Hydr,Disc Brake	
	行车制动压力/Service brake pressure	兆帕/Mpa	9.8	
	单桥制动力矩/Single axle braking torque	牛米/N.m	75600	
	制动器数量/Number of single axle brakes	个/Piece	6	
驻车制动/Parking brake	驻车制动器型式/Parking brake type		/	
	驻车制动压力/Parking brake pressure	兆帕/Mpa	/	
	驻车制动力矩/Parking brake braking torque	牛米/N.m	/	

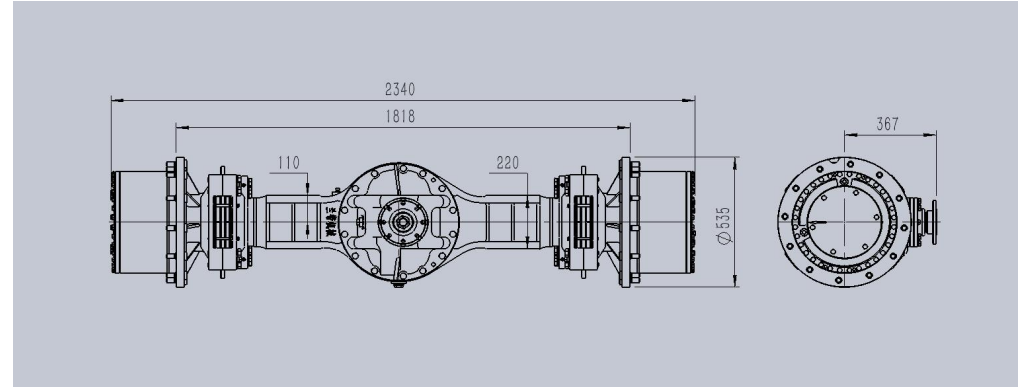
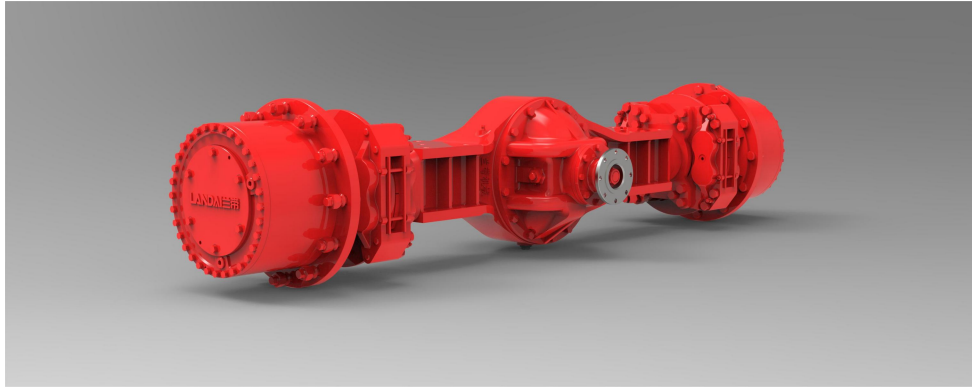
**型号/Model: ZL604000-QH**

**产品特点/Product features :**

- 二级减速传动，第一级为弧齿锥齿轮传动，第二级为行星齿轮传动（NGW 型式）； •There are two stage reduction transmission: The first stage is spiral bevel gear transmission, and the second stage is planetary gear transmission (NGW type);
- 传统锥齿轮式差速器； •The differential is a traditional bevel gear type.

**技术参数: 参数会变动, 请咨询/Technical parameters: parameters will change, please consult.**

类别/Type	参数名/Item	单位/Unit	参数值/Value	备注/Notes
桥参数/Axle	总速比/ Total speed ratio		24.65	
	桥荷/load on axle	千牛/KN	600	
	最大允许输入扭矩 /Maximum allowable input torque	牛米 N.m	7000	
	配用轮辋/Wheel rim	英寸/Inch	25"	
行车制动/Service brake	行车制动型式/Service brake type		钳盘式/Hydr,Disc Brake	
	行车制动压力/Service brake pressure	兆帕/Mpa	9.8	
	单桥制动力矩/Single axle braking torque	牛米/N.m	50400	
	制动器数量/Number of single axle brakes	个/Piece	4	
驻车制动/Parking brake	驻车制动器型式/Parking brake type		/	
	驻车制动压力/Parking brake pressure	兆帕/Mpa	/	
	驻车制动力矩/Parking brake braking torque	牛米/N.m	/	

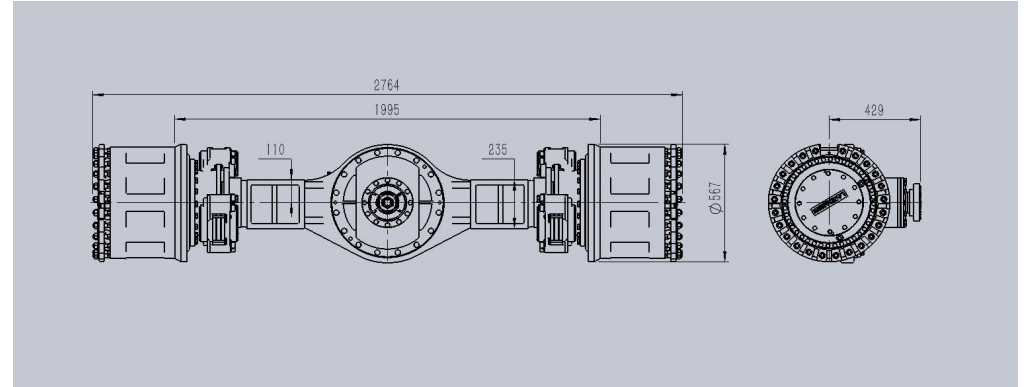
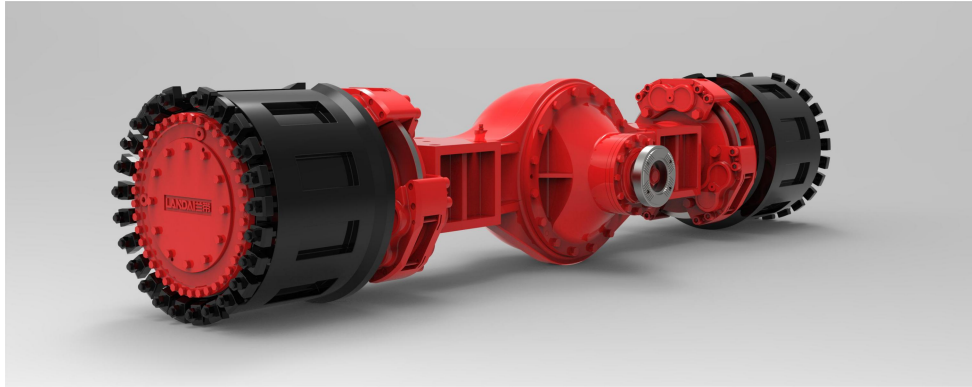


**型号/Model: C164000-Q**

**产品特点/Product features :**

- 二级减速传动，第一级为弧齿锥齿轮传动，第二级为行星齿轮传动（NGW 型式）； •There are two stage reduction transmission: The first stage is spiral bevel gear transmission, and the second stage is planetary gear transmission (NGW type);
- 传统锥齿轮式差速器； •The differential is a traditional bevel gear type.

**技术参数：参数会变动，请咨询/Technical parameters: parameters will change, please consult.**

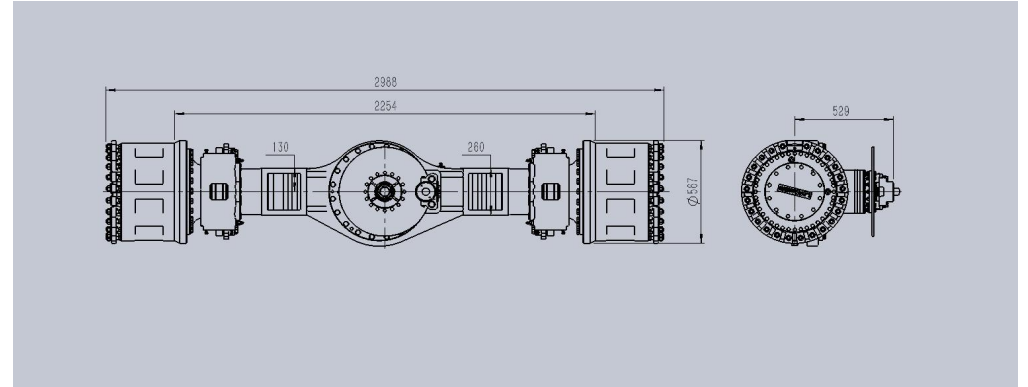
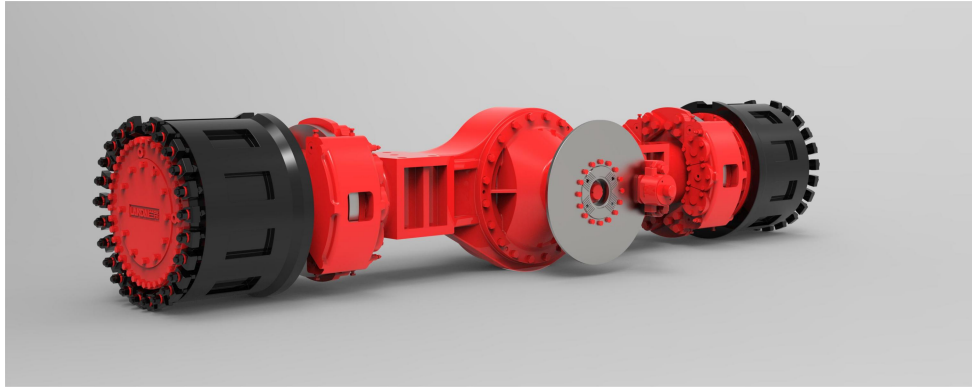
类别/Type	参数名/Item	单位/Unit	参数值/Value	备注/Notes
桥参数/Axle	总速比/ Total speed ratio		23.435	
	桥荷/load on axle	千牛/KN	370	
	最大允许输入扭矩 /Maximum allowable input torque	牛米 N.m	7350	
	配用轮辋/Wheel rim	英寸/Inch	24"	
行车制动/Service brake	行车制动型式/Service brake type		钳盘式/Hydr,Disc Brake	
	行车制动压力/Service brake pressure	兆帕/Mpa	9.8	
	单桥制动力矩/Single axle braking torque	牛米/N.m	50400	
	制动器数量/Number of single axle brakes	个/Piece	4	
驻车制动/Parking brake	驻车制动器型式/Parking brake type		/	
	驻车制动压力/Parking brake pressure	兆帕/Mpa	/	
	驻车制动力矩/Parking brake braking torque	牛米/N.m	/	

**型号/Model: C30A4000-Q**

**产品特点/Product features :**

- 配有 28 度锥轮辋, 采用压板式安装, 具有更大的安装力和承载力; • Equipped with 28-degree cone rim, using pressure plate installation, with greater installation and bearing capacity;
- 传统锥齿轮式差速器; • The differential is a traditional bevel gear type.

**技术参数: 参数会变动, 请咨询/Technical parameters: parameters will change, please consult.**

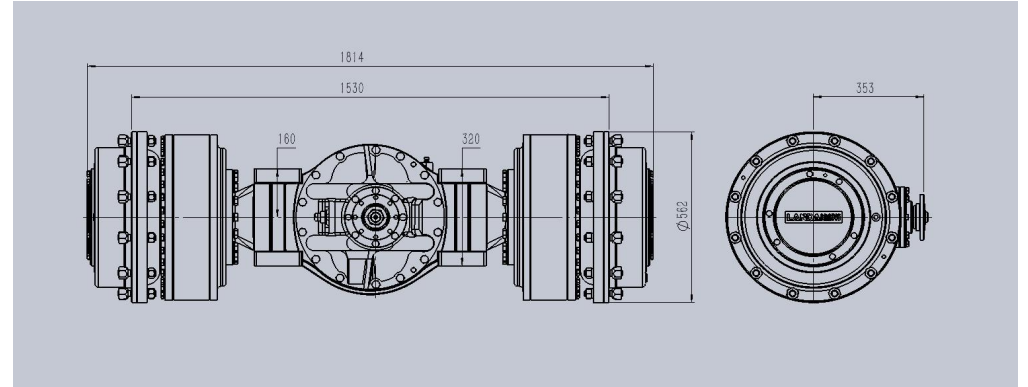
类别/Type	参数名/Item	单位/Unit	参数值/Value	备注/Notes
桥参数/Axle	总速比/ Total speed ratio		24.65	
	桥荷/load on axle	千牛/KN	700	
	最大允许输入扭矩 /Maximum allowable input torque	牛米 N.m	7000	
	配用轮辋/Wheel rim	英寸/Inch	25"	
行车制动/Service brake	行车制动型式/Service brake type		钳盘式/Hydr,Disc Brake	
	行车制动压力/Service brake pressure	兆帕/Mpa	9.8	
	单桥制动力矩/Single axle braking torque	牛米/N.m	75600	
	制动器数量/Number of single axle brakes	个/Piece	6	
驻车制动/Parking brake	驻车制动器型式/Parking brake type		/	
	驻车制动压力/Parking brake pressure	兆帕/Mpa	/	
	驻车制动力矩/Parking brake braking torque	牛米/N.m	/	

**型号/Model: C354000-Q**

**产品特点/Product features :**

- 配有 28 度锥轮辋, 采用压板式安装, 具有更大的安装力和承载力; • Equipped with 28-degree cone rim, using pressure plate installation, with greater installation and bearing capacity;
- 传统锥齿轮式差速器; • The differential is a traditional bevel gear type.

**技术参数: 参数会变动, 请咨询/Technical parameters: parameters will change, please consult.**

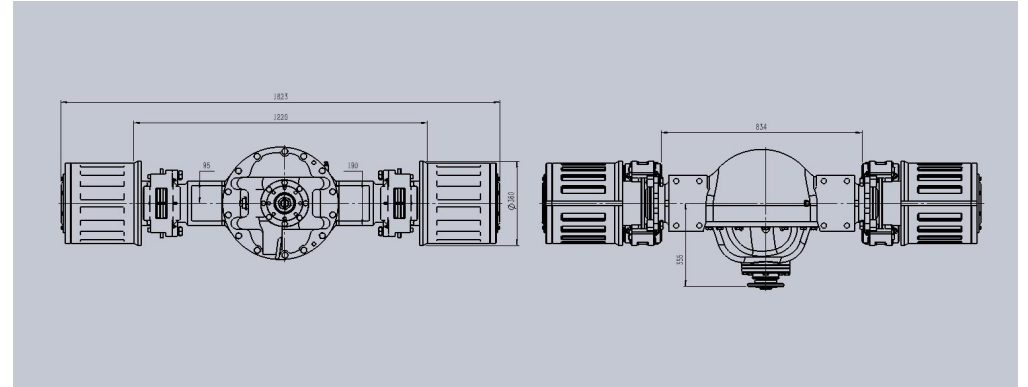
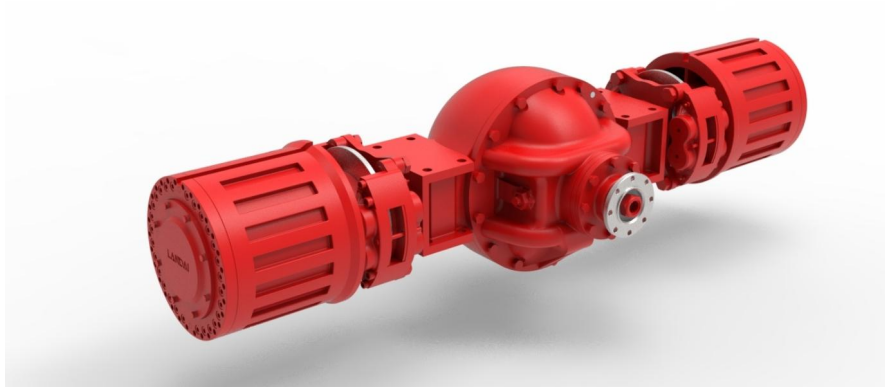
类别/Type	参数名/Item	单位/Unit	参数值/Value	备注/Notes
桥参数/Axle	总速比/ Total speed ratio		27.038	
	桥荷/load on axle	千牛/KN	800	
	最大允许输入扭矩 /Maximum allowable input torque	牛米 N.m	8000	
	配用轮辋/Wheel rim	英寸/Inch	24" 25"	
行车制动/Service brake	行车制动型式/Service brake type		钳盘式/Hydr,Disc Brake	
	行车制动压力/Service brake pressure	兆帕/Mpa	9.8	
	单桥制动力矩/Single axle braking torque	牛米/N.m	100000	
	制动器数量/Number of single axle brakes	个/Piece	4	
驻车制动/Parking brake	驻车制动器型式/Parking brake type		常闭钳盘式/Normally closed clamp disc type	
	驻车制动压力/Parking brake pressure	兆帕/Mpa	min8,max20	
	驻车制动力矩/Parking brake braking torque	牛米/N.m	5100	

**型号/Model: J304000-SQ**

**产品特点/Product features :**

- 二级减速传动，第一级为弧齿锥齿轮传动，第二级为行星齿轮传动（NGW 型式）； •There are two stage reduction transmission: The first stage is spiral bevel gear transmission, and the second stage is planetary gear transmission (NGW type);
- 传统锥齿轮式差速器； •The differential is a traditional bevel gear type.

**技术参数：参数会变动，请咨询/Technical parameters: parameters will change, please consult.**

类别/Type	参数名/Item	单位/Unit	参数值/Value	备注/Notes
桥参数/Axle	总速比/ Total speed ratio		22.547	
	桥荷/load on axle	千牛/KN	270	
	最大允许输入扭矩 /Maximum allowable input torque	牛米 N.m	5100	
	配用轮辋/Wheel rim	英寸/Inch	25"	
行车制动/Service brake	行车制动型式/Service brake type		常闭湿式/Normally closed wet type	
	行车制动压力/Service brake pressure	兆帕/Mpa	6	
	单桥制动力矩/Single axle braking torque	牛米/N.m	60000	
	制动器数量/Number of single axle brakes	个/Piece	2	
驻车制动/Parking brake	驻车制动器型式/Parking brake type		/	
	驻车制动压力/Parking brake pressure	兆帕/Mpa	/	
	驻车制动力矩/Parking brake braking torque	牛米/N.m	/	

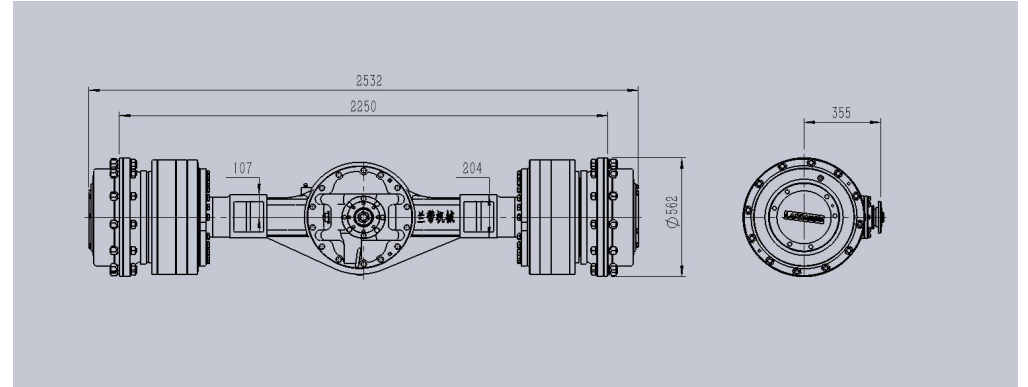
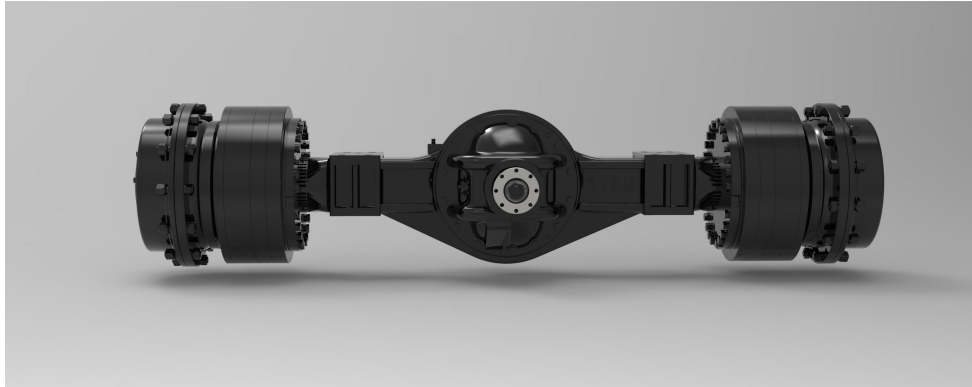
**型号/Model: M754000-Q**

**产品特点/Product features :**

- 二级减速传动，第一级为弧齿锥齿轮传动，第二级为行星齿轮传动（NGW 型式）； •There are two stage reduction transmission: The first stage is spiral bevel gear transmission, and the second stage is planetary gear transmission (NGW type);
- 传统锥齿轮式差速器； •The differential is a traditional bevel gear type.

**技术参数：参数会变动，请咨询/Technical parameters: parameters will change, please consult.**

类别/Type	参数名/Item	单位/Unit	参数值/Value	备注/Notes
桥参数/Axle	总速比/ Total speed ratio		21.346	
	桥荷/load on axle	千牛/KN	600	
	最大允许输入扭矩 /Maximum allowable input torque	牛米 N.m	4100	
	配用轮辋/Wheel rim	英寸/Inch	15"	
行车制动/Service brake	行车制动型式/Service brake type		钳盘式/Hydr,Disc Brake	
	行车制动压力/Service brake pressure	兆帕/Mpa	9.8	
	单桥制动力矩/Single axle braking torque	牛米/N.m	50400	
	制动器数量/Number of single axle brakes	个/Piece	4	
驻车制动/Parking brake	驻车制动器型式/Parking brake type		/	
	驻车制动压力/Parking brake pressure	兆帕/Mpa	/	
	驻车制动力矩/Parking brake braking torque	牛米/N.m	/	

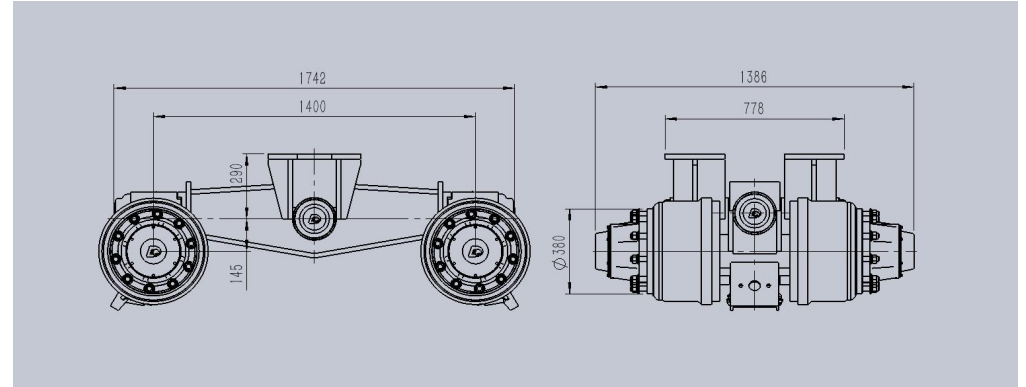
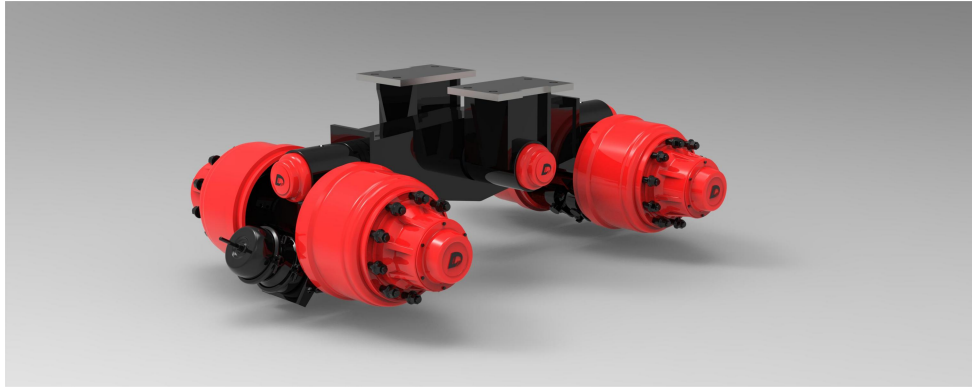


**型号/Model: K504000Q-SQH**

**产品特点/Product features :**

- 二级减速传动，第一级为弧齿锥齿轮传动，第二级为行星齿轮传动（NGW 型式）； •There are two stage reduction transmission: The first stage is spiral bevel gear transmission, and the second stage is planetary gear transmission (NGW type);
- 传统锥齿轮式差速器； •The differential is a traditional bevel gear type.

**技术参数：参数会变动，请咨询/Technical parameters: parameters will change, please consult.**

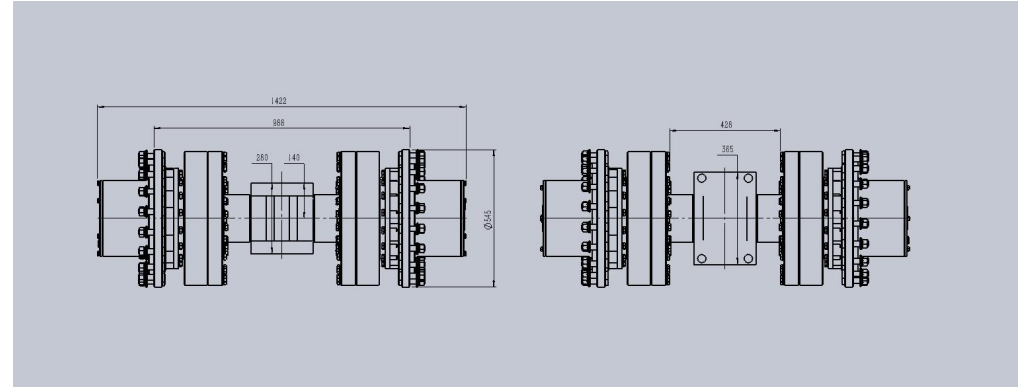
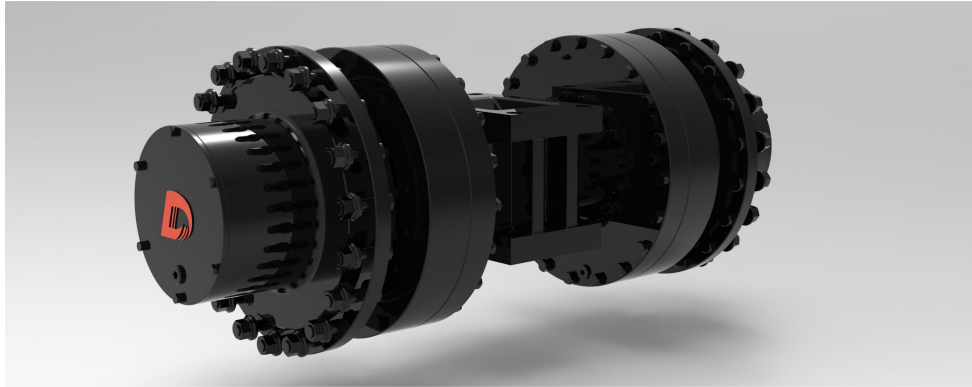
类别/Type	参数名/Item	单位/Unit	参数值/Value	备注/Notes
桥参数/Axle	总速比/ Total speed ratio		22.547	
	桥荷/load on axle	千牛/KN	500	
	最大允许输入扭矩 /Maximum allowable input torque	牛米 N.m	5100	
	配用轮辋/Wheel rim	英寸/Inch	25"	
行车制动/Service brake	行车制动型式/Service brake type		常开湿式/Always Open wet type	
	行车制动压力/Service brake pressure	兆帕/Mpa	13	
	单桥制动力矩/Single axle braking torque	牛米/N.m	44000	
	制动器数量/Number of single axle brakes	个/Piece	2	
驻车制动/Parking brake	驻车制动器型式/Parking brake type		常闭钳盘式/Normally closed clamp disc type	
	驻车制动压力/Parking brake pressure	兆帕/Mpa	2500	
	驻车制动力矩/Parking brake braking torque	牛米/N.m	1500	

**型号/Model: I1204000**

**产品特点/Product features :**

- 从动承重桥，可单独使用，也可并排组合使用； •Driven load-bearing bridge, can be used alone, can also be combined side by side;
- 一线摆动角度为 $\pm 12^\circ$ ，两桥调整摆动角度 $\pm 6^\circ$ ； •The first line strike angle is  $\pm 12^\circ$ , and the two bridges swing angle is  $\pm 6^\circ$  .

**技术参数: 参数会变动, 请咨询/Technical parameters: parameters will change, please consult.**

类别/Type	参数名/Item	单位/Unit	参数值/Value	备注/Notes
桥参数/Axle	总速比/ Total speed ratio		1:1	
	桥荷/load on axle	千牛/KN	1200	
	最大允许输入扭矩 /Maximum allowable input torque	牛米 N.m	从动/Driven	
	配用轮辋/Wheel rim	英寸/Inch	8.0-20	
行车制动/Service brake	行车制动型式/Service brake type		鼓式制动器/Drum brake	
	行车制动压力/Service brake pressure	兆帕/Mpa	0.8	
	单桥制动力矩/Single axle braking torque	牛米/N.m	24000	
	制动器数量/Number of single axle brakes	个/Piece	4	
驻车制动/Parking brake	驻车制动器型式/Parking brake type		/	
	驻车制动压力/Parking brake pressure	兆帕/Mpa	/	
	驻车制动力矩/Parking brake braking torque	牛米/N.m	/	

**型号/Model: I524000**

**产品特点/Product features :**

- 从动承重桥，可单独使用，也可并排组合使用； •Driven load-bearing bridge, can be used alone, can also be combined side by side;
- 常开多片湿式制动器，用于防爆、防尘、防油水等环境； •Often open multi-disc wet brake, used for explosion-proof, dust-proof, oil and water-proof environment;

**技术参数: 参数会变动, 请咨询/Technical parameters: parameters will change, please consult.**

类别/Type	参数名/Item	单位/Unit	参数值/Value	备注/Notes
桥参数/Axle	总速比/ Total speed ratio		1:1	
	桥荷/load on axle	千牛/KN	520	
	最大允许输入扭矩 /Maximum allowable input torque	牛米 N.m	从动/Driven	
	配用轮辋/Wheel rim	英寸/Inch	8.0-20	
行车制动/Service brake	行车制动型式/Service brake type		常开湿式/Always Open wet type	
	行车制动压力/Service brake pressure	兆帕/Mpa	10	
	单桥制动力矩/Single axle braking torque	牛米/N.m	20000	
	制动器数量/Number of single axle brakes	个/Piece	2	
驻车制动/Parking brake	驻车制动器型式/Parking brake type		/	
	驻车制动压力/Parking brake pressure	兆帕/Mpa	/	
	驻车制动力矩/Parking brake braking torque	牛米/N.m	/	



## 企业简介

Company Introduction

厦门兰带机械有限公司成立于1984年，占地面积20万平方米，员工100余人，集研发、生产、销售、售后服务为一体科技企业。为工程机械、农用机械、土方机械等轮式机械驱动桥、电驱桥、变速箱、制动器、传动类齿轮组及其零部件专业制造企业。为五矿、徐工、柳工、龙工、鞍钢集团、厦工、晋工、沈阳重电等企业提供产品和服务。通过ISO9001体系认证，独立研发，实验室，试验台和装机试验场地。

Xiamen Landai Machinery Co., Ltd. (LDMA) was established in 1984, covering an area of 200,000 square meters and employing more than 100 people. It is a technology-based enterprise integrating R&D, production, sales, and after-sales service. We specialize in the manufacturing of drive axle, electric-driven axle, gearboxes, brakes, transmission gear sets, and their components for engineering machinery, agricultural machinery, earthwork machinery, and other industries. We provide products and services for enterprises such as WISCO, XCMG, Liugong, Longgong, Ansteel Group, XCMG, Jincheng, and Shenyang Heavy Electric. We have obtained ISO9001 system certification and have independent R&D capabilities, laboratory facilities, test platforms, and installation test sites.



## 联系我们 CONTACTUS

---

厦门兰带机械有限公司

地址：厦门市翔安区内厝镇上塘村内厝中路312号

电话：0086-0592-7882666 008615959855505

网站：<http://www.xmlandai.com>

邮箱：[xmlandai001@163.com](mailto:xmlandai001@163.com)

Xiamen Landai Machinery Co., Ltd

Address: No. 312 Neicuo Middle Road, Shangtang Village, Neicuo Town, Xiang'an District, Xiamen City

Phone: 0086-0592-7882666 008615959855505

Website: <http://www.xmlandai.com>

Email: [xmlandai001@163.com](mailto:xmlandai001@163.com)