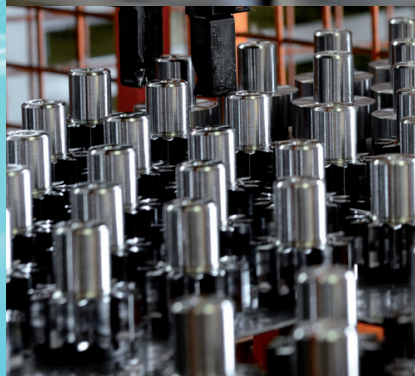
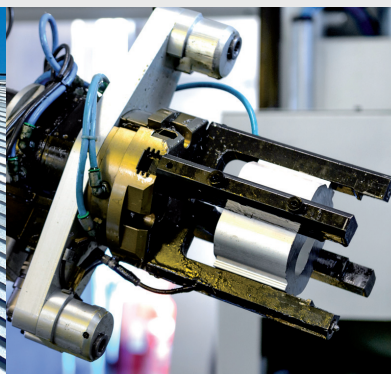


 **MARZOCCHI** POMPE
HIGH PRESSURE GEAR PUMPS





历史。 Guglielmo 和 Stefano 兄弟于1949年在博洛尼亚成立了 Marzocchi 公司，开始从事制造摩托车前叉和减震器。随着公司的发展，公司于1953年购买了位于雷诺河畔卡萨莱基奥城市附近的工厂，目前这里仍然是公司的总部。1961年，公司开始生产第一台泵，目前该产品陈列于博洛尼亚工业遗产博物馆，同年成立了 **Marzocchi Pompe** 公司。

50多年来，Marzocchi Pompe 一直在卡萨莱基奥生产外啮合齿轮泵和马达。

HYISTORY. Marzocchi was founded in 1949 by the brothers Guglielmo and Stefano in Bologna, where they began the manufacturing of motorcycle forks and shock absorbers. In 1953 the growth of the Company led to the purchase of the plant in Casalecchio di Reno, near the city, which continues to be the headquarter of the Company. The year 1961 saw the production of pump n°. 1, now on display in the Museum of Industrial Heritage in Bologna, as well as the foundation of **Marzocchi Pompe**.

For over 50 years, Marzocchi Pompe has been producing external gear pumps and motors in Casalecchio.



我们的公司 THE COMPANY

“...哪里有东西在动，哪里可能就有有一个齿轮泵或马达...”

“...where there is something moving...there could be a gear pump or a gear motor...”

使命。 无论在哪一种应用上，我们都是齿轮泵和马达制造领域的佼佼者，我们希望保持这一领先的地位。产品的不断革新给它们所适用的应用带来了新的机会。

Marzocchi Pompe，我们致力于研发性能卓越的泵和马达，来满足机器以及其他应用不断发展的需求。

我们的员工和所有公司经营活动的发动机一样，严格遵守内部管理系统的同时，也在产品研发、工作流程和客户支持上发挥着合适的创造力。

在全球市场中，只要提起Marzocchi Pompe，人们想起的便是无风险的兼具高品质和可靠性的产品。

MISSION. We are and want to remain key players offering gear Pumps and Motors for any type of application.

It's the continuous improvement of a Product that increases the opportunities for its applications. In Marzocchi Pompe, we are committed to develop Pumps and Motors with appropriate performance to fit the needs of machines, equipment and systems following their natural evolution.

The Man as the motor of all corporate activities and with a rigorous approach with respect to the Internal Organizational System, yet free with his own Creativity in search of new solutions for Products, Processes and Customer Support.

Quality and Reliability of our Products for a risk-free supply in the global market to which Marzocchi Pompe refers to.



1949

Guglielmo 和 Stefano Marzocchi 成立了 Marzocchi 公司
Guglielmo and Stefano Marzocchi establish the Marzocchi Company

1961

生产第一台齿轮泵
The first gear pump is produced

1992

Marzocchi 在美国设立第一家分公司
Marzocchi opens its first branch in the USA

1995

Marzocchi Pompe 进入汽车行业，开始生产电液转向泵
Marzocchi Pompe enters the automotive sector with the production of electro-hydraulic power steering pumps

1997

Adriano Marzocchi 成为 Marzocchi Pompe 公司总经理
Adriano Marzocchi becomes the General Manager of Marzocchi Pompe

2000

与 Montirone 成立合资公司
Joint Venture with Montirone

2008

美国分公司搬到芝加哥
The USA branch moves to Chicago

2012

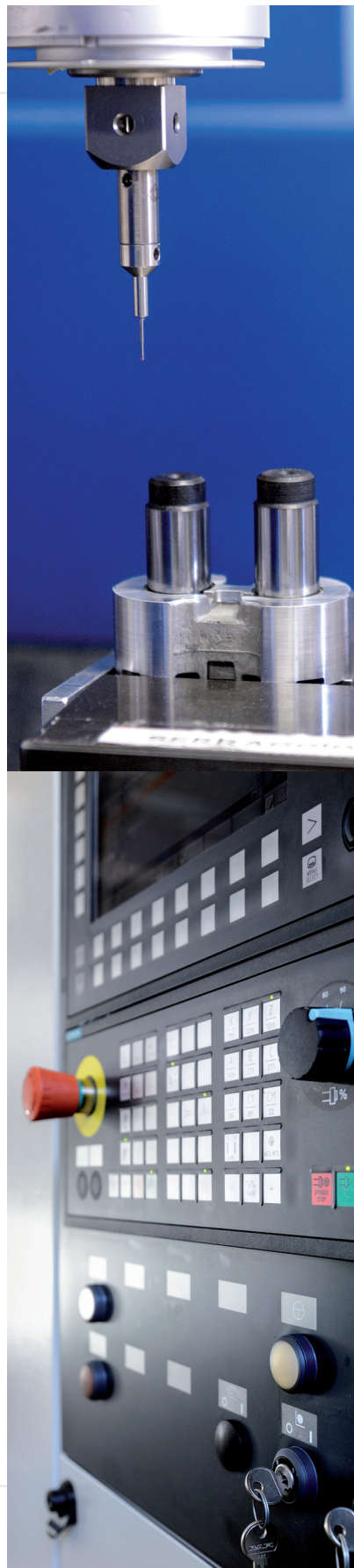
推出新的 ELIKA 低噪声泵
Presentation of the new ELIKA low-noise pump

2015

中国分公司新项目启动
Launch of the new project for the China branch

2016

见证 NEPLA DIVISION 的诞生
NEPLA DIVISION is established



我们的公司。 Marzocchi Pompe 是专门从事外啮合齿轮泵和马达的设计、生产和销售的公司。

本公司由马祖奇 Marzocchi 家族完全掌控。

Marzocchi Pompe 能够很自豪地自称为外啮合齿轮泵和马达的专业制造商，能够在自己的工厂内生产几乎所有主要部件，并使用源自意大利的品牌。

公司拥有品种最广泛产品，从微型液泵 - Marzocchi Pompe 引以为豪的产品 - 到新开发的低噪声泵 ELIKA。

我们也是非常重视不断研发新产品的公司，使得我们可以满足客户和市场的新要求，所关注的不仅包括如何降低噪音，还要实现尽可能高的效率，从而有助于通过所实施的方案实现节能。

公司总是将质量放在生产和组织系统的核心，在工艺、运营和客户服务方面不断追求卓越。

Marzocchi Pompe 自夸拥有先进的自动化系统：采用高精度机床和机器人进行装卸。为了保证产品质量的一致性，所有部门都配备相应的检测仪器装配单元采用了“poka-yoke”式防错误系统，所有产品都在生产线终端测试机上经过检测，并记录检测结果以供今后参考。

Marzocchi Pompe 公司自行设计和制造所有夹具和自动化工具，这归功于一个特殊的部门，这个部门在 2011 之前是 ATMA 公司，现在已经被纳入 Marzocchi Pompe。所有的齿轮生产转移到 2016 年投产的 NEPLA 新工厂，为预测的销量增加提供支持，该工厂安装了新的组装生产线和汽车泵测试设备。齿轮的生产基于“待组装”的理念，使用先进的生产设备和测试系统。

Marzocchi Pompe 还与供应泵用高压压铸零件的公司成立了一家合资企业。

THE COMPANY. Marzocchi Pompe is a Company specialised in the design, production and sale of high-performance external gear pumps and motors.

The Company is in the solid hands of the Marzocchi family.

Marzocchi Pompe is proud to be able to define itself **manufacturer of external gear pumps and motors**, producing as a matter of fact almost all main components in its own factories and to use the MADE IN ITALY brand.

The Company boasts the widest range of products from **micro-hydraulics** - the pride of Marzocchi Pompe's production - to the newly-developed **low-noise pumps ELIKA**.

It is also a Company that places importance on **continuous product development** in order to satisfy new requests from Clients and from the Market, not only regarding **noiselessness** but also regarding the **highest possible levels of efficiency**, thus contributing to energy savings through the solution implemented.

The Company has always placed **quality** at the heart of productive and organisational systems, pursuing the continuous search for **excellence** in processes, organisation, and Customer service.

Marzocchi Pompe boasts highly technological and automated systems: high-precision machine tools and robots for loading/unloading. All departments are equipped with appropriate testing instrumentation to guarantee **consistency in product quality**. The **assembly cells** utilise “poka-yoke” style error proof systems and all products are tested on end-of-line test-stands where the results are recorded for future reference.

Marzocchi Pompe internally **designs** and **manufactures** all its fixtures and automation tools thanks to a special department, which until 2011 was the former Company ATMA, now integrated into Marzocchi Pompe.

All gear production was moved to the **new NEPLA factory**, opened in 2016, to sustain the forecasted increase in volume and where new assembly and testing lines for the automotive pumps were installed. The production of gears is based on the “ready to assemble” concept, with the use of state-of-the-art manufacturing equipment and test systems. Marzocchi Pompe has furthermore set up a Joint Venture with the aluminium die-casting foundry **Montirone** that supplies all of the high pressure die-cast components used in the pumps.

网络 NETWORK



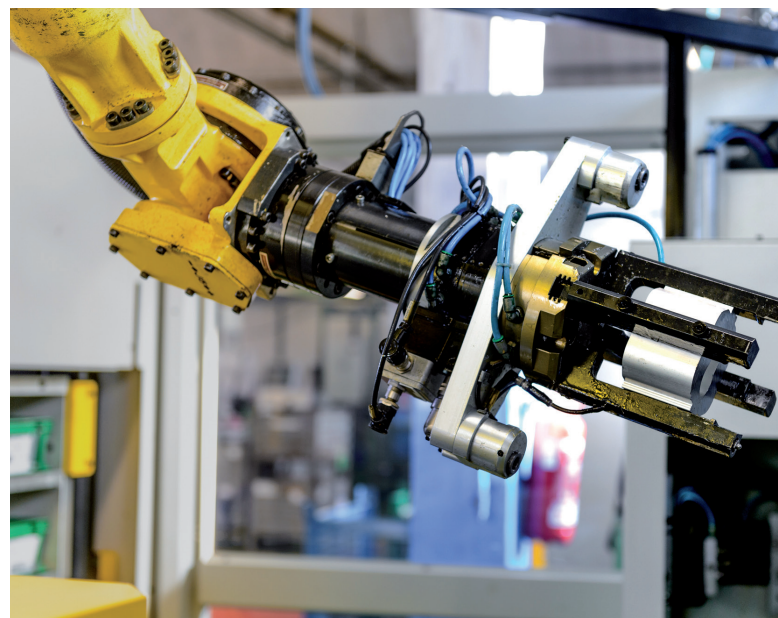
始终为客户着想 BY THE CLIENT'S SIDE, ALWAYS.

为客户着想是 Marzocchi Pompe 的重中之重为了替客户考虑周全，不仅要能够提供各种产品，还要在必要时随时提供帮助。

为此，Marzocchi Pompe 公司建立了广泛的销售网络，遍及意大利和世界各地。在世界上任何地方都能找到 Marzocchi Pompe 的经销商。在公司的网站上，提供了完整的国内和国际销售网络。

To be **by the Customer's side** is of prime importance for Marzocchi Pompe. To be by their side not only with the availability of products but also with full-time support whenever necessary.

To this end, Marzocchi Pompe has developed a **wide-range sales network**, which extends throughout Italy and abroad. Marzocchi Pompe distributors can be found all around the world. On the Company's website, the entire domestic and international sales network is available.





MARZOCCHI PUMPS 美国公司。Marzocchi Pompe 美国公司，直接和通过广泛的分销网络，是参考的为美国的市场，该公司对于 Marzocchi Pumps 来说一直起到战略性作用。

尽管在美国的销售活动要早得多，但 2000 年 Marzocchi Pumps 美国公司才成立于加利福尼亚州。2008 年，该分公司搬至芝加哥地区，这里对于美国流体动力市场是更具战略性意义的地方，2016 年 1 月，公司总部搬迁到伊利诺斯州的埃尔金。新大楼包括 400 平方米办公区和 800 平方米仓储区。

Marzocchi Pumps 美国公司面向北美地区的客户，管理并支持销售工作，公司拥有品类齐全的成品库存，能够满足客户对快速（通常是“当日”）送达的要求。美国公司也得益于一支高素质的技术队伍，可以提供充分及时的技术支持。

MARZOCCHI POMPE CHINA 中国公司中国和远东地区在全球经济中起到日益重要的角色，近年来这些地区已成为 Marzocchi Pompe 项目战略中的一部分，从而促使我们于 2016 年成立了中国分公司。该公司位于上海，经销网络覆盖中国和其他远东国家，能够保重为客户提供快速高效的支持和服务。



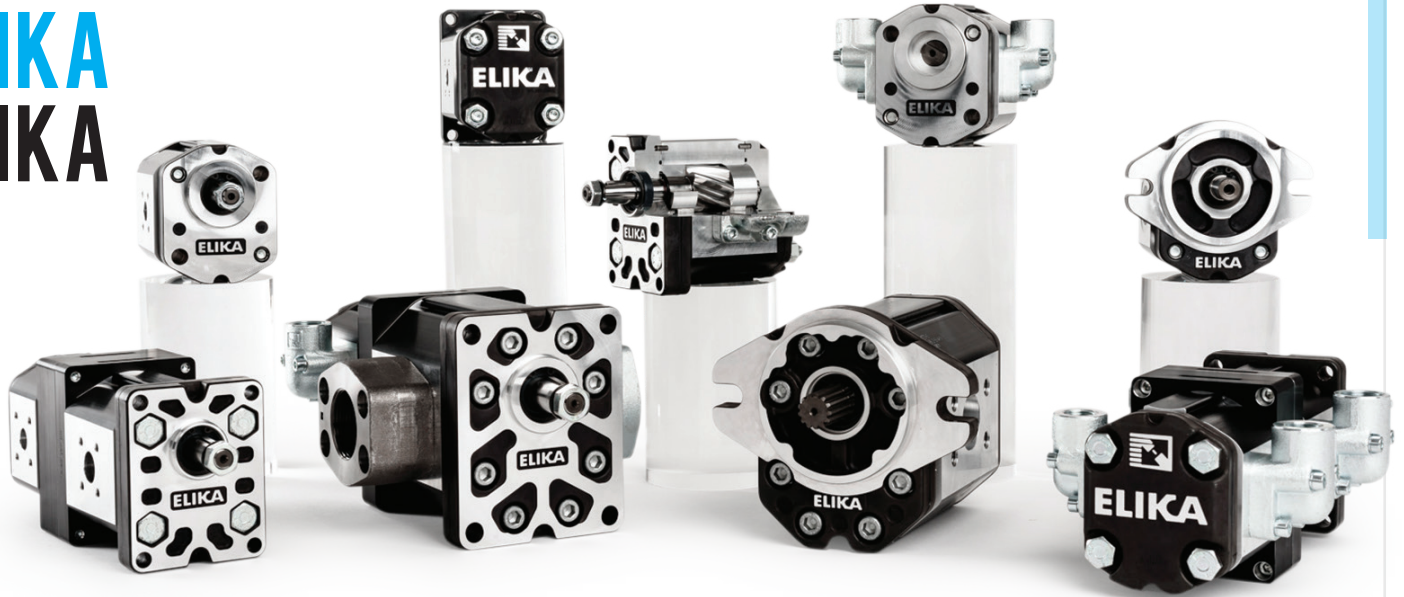
銷售全球范围内
SALES WORLDWIDE

MARZOCCHI PUMPS USA. Marzocchi Pumps USA, both directly and through an extensive distribution network, is the point of reference for the American Market, which has always held a strategic role for Marzocchi Pompe. Marzocchi Pumps USA was founded in California in year 2000, although sales activity in America began much earlier. In 2008 the branch was transferred to the Chicago area, an even more strategic position for the American fluid power market, and in January 2016 the headquarter was moved to Elgin, Illinois. The new structure covers 400 m² of office space and 800 m² of warehouse space.

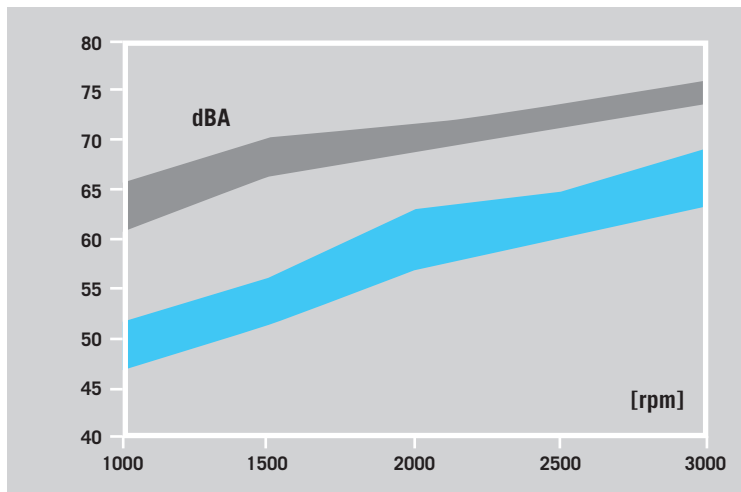
Marzocchi Pumps USA manages and supports sales to North American Clients and boasts a well-stocked warehouse of finished products capable of meeting demands for fast, often “same day” deliveries. The branch also benefits from the presence of a highly qualified technical team equipped to supply full and prompt support.

MARZOCCHI POMPE CHINA. China and the Far East play an ever-more important role in the world economy, a role that in recent years has formed a strategic part of Marzocchi Pompe's projects and has consequently led to the establishment of the Chinese branch, which began in 2016. The branch is located in Shanghai and, together with a distribution network covering both China and other Far East countries, guarantees fast and efficient support and service.

ELIKA ELIKA



低噪声和高效率的最佳组合 THE BEST MATCH OF LOW-NOISE AND HIGH-EFFICIENCY



泵噪声比较[dBA] Marzocchi GHP2 - ELIKA ELI 2 17.8 立方厘米/转，压力从 10 到 250 巴。

Noise pump comparison [dBA] Marzocchi GHP2 - ELIKA ELI 2 same displacement 17.8 cm³/rev, pressures from 10 to 250 bar.

ELIKA 是 Marzocchi Pompe 开发的一种低噪声、高效率、低脉动泵，无疑代表了公司销售和产品战略的前沿。

ELIKA 产品推出之前经过了很长一段时间的研发过程，这一过程中我们注册了多项专利和商标。通过开发专用设计软件，我们与博洛尼亚大学工程学院密切合作对特定轮齿外形开展研究。

ELIKA is the **low-noise, high-efficiency, low-pulsation** pump developed by Marzocchi Pompe, which undoubtedly represents the cutting edge of the Company's sales and product strategy.

The realization of **ELIKA** followed a long stage of Research & Development that led to the registering of several **patents** and **trademarks**. The study of the particular tooth **profile** was developed in close collaboration with the faculty of Engineering at the University of Bologna through the generation of dedicated design software.

概述

ELIKA 是适合所有要求低噪声和高效率（特别是低速度）的应用的解决方案。与传统外啮合齿轮泵相比，ELIKA 实际降低的噪声量可达到 15 dBA。最大工作压力与 GHP 系列（铸铁/铝）产品类似，从而达到 300 巴。这种没有封装的特定轮齿形状进一步大大减少了传递给与泵相连接的其他组件（软管、容器和阀门）的压力波动和振动，给系统带来很多好处。尽管轮齿数量较少，但斜齿轮有效地保证了运动的连续性。轮齿数量较少也大大降低了产生噪声的基本频率，发出令人愉悦的声音。

性能

ELIKA 泵产生的噪声水平极低，这使其特别适用于目前采用更昂贵技术的应用，例如螺旋泵、叶片泵或内啮合齿轮泵。由于其自身特征，ELIKA 在很多方面看来都是理想的解决方案，例如旋转速度、操作压力和粘度。ELIKA 泵的结构可以在各种条件下尽量减少泄漏风险并尽可能提高容积效率。因此 ELIKA 因此特别适合使用逆变器或变速传动调速器的应用。

OVERVIEW

ELIKA is a solution for all applications requiring **low levels of noise** and **high levels of efficiency**, particularly at low speeds. ELIKA in fact reduces noise emissions by as much as **15 dBA** with respect to traditional external gear pumps. Maximum working pressures are similar to those for the GHP series (cast iron/aluminium), thus reaching 300 bar. The particular tooth profile without encapsulation furthermore allows a considerable reduction in pressure **oscillations** and **vibrations** transmitted to other components connected to the pump (hoses, tank and valves), producing numerous advantages in the circuit. The **helical gear** effectively guarantees continuity of movement despite the low number of teeth. The low number of teeth also significantly reduces the fundamental **frequencies** of noise output, making the **sound particularly pleasant**.

PERFORMANCE

The **particularly low level of noise** produced by the ELIKA pump makes it particularly suitable for applications which currently employ much more expensive technologies such as screw pumps, vane pumps, or internal gear pumps. ELIKA, with its characteristics, is the **ideal solution** regarding a wide range of specifications such as **rotation speed, operating pressure and viscosity**. The structure of the ELIKA pump minimises leaks and maximises **volumetric efficiency** in all conditions. ELIKA is therefore particularly suited for applications, which use **inverters** or variable-speed drives to regulate the speed of the actuators.

ELIKA 分组 ELIKA GROUPS

ELIKA2 > ELIKA2

现有排量从
7 cm³/revolution
35 cm³/revolution

Available displacement
from 7 cm³/revolution
to 35 cm³/revolution



ELIKA3 > ELIKA3

现有排量从
20.4
87.1 cm³/revolution

Available displacement
from 20.4 cm³/revolution
to 87.1 cm³/revolution



ELIKA4 > ELIKA4

现有排量从
86.5 cm³/revolution
199.8 cm³/revolution

Available displacement
from 86.5 cm³/revolution
to 199.8 cm³/revolution



ELIKA MULTIPLA > ELIKA 多个泵

选自组2、组3和组4的相同型号可以在
双联或三联配置中使用。

Identical models from the group 2, group
3 and group 4 families can be combined
in double or triple configurations.





ELIKA2

泵 PUMP 类型 TYPE	排量 DISPLACEMENT cm³/转 [cm³/rev]	时流量 FLOW AT 1500 giri/min 1500 rpm [升/分钟] [l/min]	操作压力 OPERATING PRESSURE			最大速度 ROTATION SPEED		在 P1 条件下* NOISE at 1500 rpm*	
			P1 最大连续 工作压力 P1 Max cont.	P2 最大间歇 压力 P2 Max intermitt.	转速 P3 Max peak	最小速度 Minimum speed	最大速度 Maximum speed	再循环条件下 On recirc.	在 P1 条件下 At P1
			[巴] [bar]	[巴] [bar]	[巴] [bar]	[rpm]	[rpm]	[dBA]	[dBA]
ELI2-D-7.0	7.0	10.5	280	295	310	300	4000	47	51
ELI2-D-8.2	8.2	12.3	280	295	310	300	4000	47	52
ELI2-D-9.6	9.6	14.5	280	295	310	300	4000	48	54
ELI2-D-11.4	11.4	17.1	280	295	310	300	4000	48	55
ELI2-D-14.0	14.0	21.0	260	275	290	300	4000	49	55
ELI2-D-16.1	16.1	24.1	260	275	290	300	4000	49	56
ELI2-D-17.8	17.8	26.7	260	275	290	300	4000	49	57
ELI2-D-21.0	21.0	31.5	230	245	260	200	3500	49	57
ELI2-D-23.7	23.7	35.5	230	245	260	200	3200	50	57
ELI2-D-25.7	25.7	38.6	210	225	240	200	3000	50	57
ELI2-D-28.0	28.0	42.1	200	215	230	200	2600	50	58
ELI2-D-35.0	35.0	52.6	150	165	180	200	2200	50	58

ELIKA3

泵 PUMP 类型 TYPE	排量 DISPLACEMENT cm³/转 [cm³/rev]	时流量 FLOW AT 1500 giri/min 1500 rpm [升/分钟] [l/min]	操作压力 OPERATING PRESSURE			最大速度 ROTATION SPEED		在 P1 条件下* NOISE at 1500 rpm*	
			P1 最大连续 工作压力 P1 Max cont.	P2 最大间歇 压力 P2 Max intermitt.	转速 P3 Max peak	最小速度 Minimum speed	最大速度 Maximum speed	再循环条件下 On recirc.	在 P1 条件下 At P1
			[巴] [bar]	[巴] [bar]	[巴] [bar]	[rpm]	[rpm]	[dBA]	[dBA]
ELI3-20.4	20.4	30.7	280	295	310	300	3500	49	59
ELI3-21.6	21.6	32.4	280	295	310	300	3500	49	59
ELI3-26.3	26.3	39.4	280	295	310	300	3500	49	59
ELI3-33.3	33.3	50.0	270	285	300	300	3500	50	60
ELI3-39.1	39.1	58.7	260	275	290	300	3500	50	60
ELI3-43.2	43.2	64.8	250	265	280	200	3500	51	61
ELI3-52.0	52.0	78.0	230	245	260	200	3500	51	61
ELI3-60.8	60.8	91.1	210	225	240	200	3300	51	62
ELI3-64.3	64.3	96.4	210	225	240	200	3200	51	62
ELI3-70.7	70.7	106.0	200	215	230	200	2900	52	63
ELI3-78.3	78.3	117.4	180	195	210	200	2600	52	63
ELI3-87.1	87.1	130.6	160	175	190	200	2400	52	63

* 数值基于 ISO4412 测试程序

* Value based on ISO4412 test procedure

ELIKA 技术数据 ELIKA TECHNICAL DATA

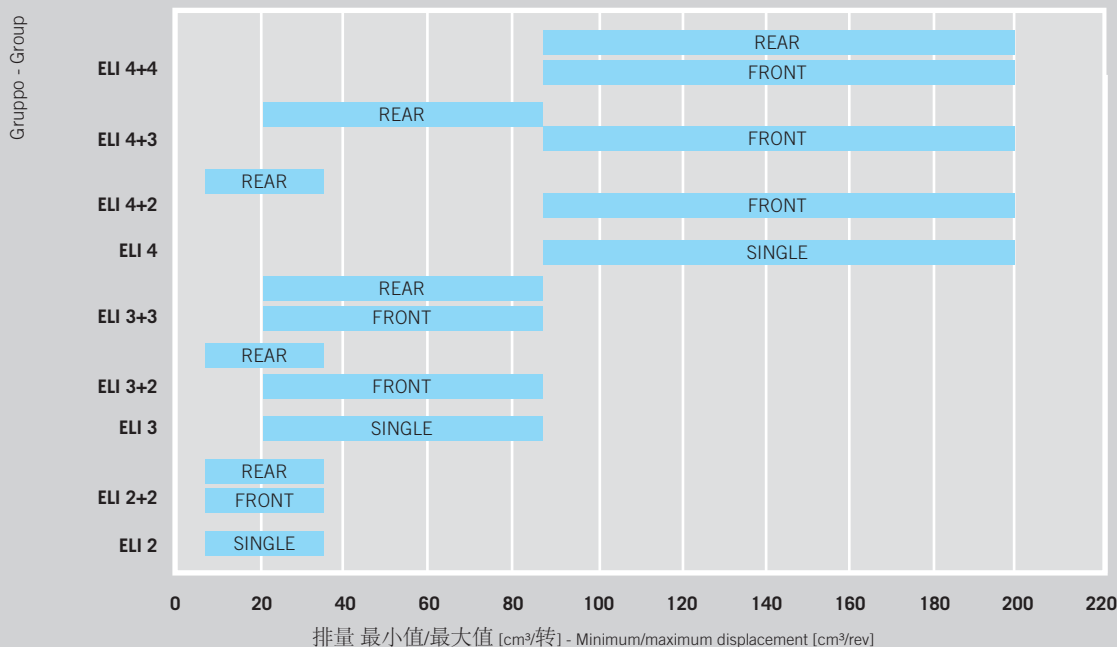
ELIKA4

泵 PUMP 类型 TYPE	排量 DISPLACEMENT cm³/转 [cm³/rev]	时流量 FLOW AT 1500 giri/min 1500 rpm [升/分钟] [l/min]	操作压力 OPERATING PRESSURE			最大速度 ROTATION SPEED		在 P1 条件下* NOISE at 1500 rpm*	
			P1 最大连续 工作压力 P1 Max cont.	P2 最大间歇 压力 P2 Max intermitt.	转速 P3 Max peak	最小速度 Minimum speed	最大速度 Maximum speed	再循环条件下 On recirc.	在 P1 条件下 At P1
			[巴] [bar]	[巴] [bar]	[巴] [bar]	[rpm]	[rpm]	[dBA]	[dBA]
ELI4-86.5	86.5	129.8	240	255	270	200	2800	58	66
ELI4-106.3	106.3	159.5	200	215	230	200	2500	58	66
ELI4-127.4	127.4	191.1	180	195	210	200	2500	59	67
ELI4-147.2	147.2	220.8	170	185	200	200	2500	59	67
ELI4-165.9	165.9	248.9	160	175	190	200	2200	60	68
ELI4-181.1	181.1	271.7	140	155	170	200	2200	60	68
ELI4-199.8	199.8	299.8	130	145	160	200	2200	60	69

如需确认是否带有法兰，轴和端口，
请参阅 ELIKA 技术目录

To verify the availability of flanges,
shafts and ports please refer to the ELIKA
technical catalogue

ELIKA 系列 - ELIKA RANGE



前端 = FRONT
后端 = REAR
单个 = SINGLE

ELIKA 系列

由于篇幅的原因，表中没有显示
中间的 ELIKA 组件，在任何情况
下，这些组件与 ELI2、ELI3 和 ELI4
组中所显示的相同。因此，有可
能采用下列组合建立三联

ELIKA 泵：

- 2+2+2
- 3+3+3
- 3+3+2
- 3+2+2
- 4+4+4
- 4+3+2
- 4+2+2
- 4+3+3
- 4+4+3

ELIKA Range

For reasons of space, the
tables do not show interme-
diate ELIKA elements, which
in any case are identical to
those shown as rear and front
elements for all ELI2, ELI3 and
ELI4 groups. It is therefore pos-
sible to create a triple-version
ELIKA pump in the following

combinations:

- 2+2+2
- 3+3+3
- 3+3+2
- 3+2+2
- 4+4+4
- 4+3+2
- 4+2+2
- 4+3+3
- 4+4+3





ELIKA 的应用 ELIKA APPLICATIONS

ELIKA 系列产品具有低噪声、低波纹的特点，这使其成为多种用途的理想之选，此产品能够提高其内部电路的总体性能。

一般情况下，ELIKA 泵是工业领域的理想解决方案，例如适用于印刷机、机床、测试设备、纸加工设备、垃圾压实机和再循环泵。考虑到搬运领域比以往更严格的法规，ELIKA 泵可能起到理想的作用，例如在材料处理应用中，在升降平台、街道清洗机和城市垃圾的收集。

在海军、造船和休闲行业，以及在新能源方面，ELIKA 也代表着一种优秀的解决方案，在这些领域中噪声和效率是最重要的因素。

考虑到运行速度的范围，ELIKA 适合于具有变速驱动器的系统。在这种系统中，与逆变器结合使用之后，其实可以固定流量泵替代可变流量泵，如 ELIKA，从而大大降低成本。在需要高性能的重要应用中，在变速传动系统中使用 ELIKA 可以大大降低系统噪声造成的影响，减少振动并提高操作者的舒适度。



The characteristics of the **low noise** and **low ripple** ELIKA series make this product ideal for use in multiple applications since, due to its technical specifications, it can **improve the overall performances** of the circuit in which it is mounted.

ELIKA pumps are an ideal solution for the **industrial sector** in general, for example in **presses, machine tools, test equipment, paper processing equipment, waste compactors** and **re-circulation pumps**. In the light of ever-more stringent legislation also in the **mobile sector**, ELIKA pumps can have an ideal role for example in **material-handling** applications, in **lifting platforms, street-cleaning machines** and the **collection of urban refuse**. ELIKA also represents an excellent solution in the **naval, shipbuilding** and **leisure sectors**, as well as in **new energy sources**, where noise emissions and efficiencies are of prime importance.

For its operating speed range, ELIKA is ideal for employment in **systems with variable-speed drives**. In such systems, it is in fact possible to substitute a variable flow pump with a fixed flow pump, such as ELIKA, **combined with an inverter**, thus lowering costs considerably. The use of ELIKA in a variable-speed drive system results in a considerable reduction in the acoustic impact of the system, reducing vibrations and increasing operator comfort in fundamentally critical applications requiring elevated performance.

齿轮泵和齿轮马达的应用

GEAR PUMP AND GEAR MOTOR APPLICATIONS

外啮合齿轮泵和马达可以应用于非常广泛的行业。下面列表说明了主要的应用领域。

External gear pumps and motors can be applied in a very wide range of sectors. The following list illustrates the principal fields of application.

汽车: 这在流体动力领域中是一个新的应用,所需要的不仅是产品性能达到最高水平,还要求公司的质量管理体系达到最高水准。



AUTOMOTIVE: this is a new application in the world of fluid power, which requires not only the highest levels of excellence in product performance, but also in the Quality Management System of the Company.

医疗设备: 从手术或 CT 扫描台到最新一代救护车担架,小尺寸、高可靠性和低噪声在此类应用中也是非常必要的。



MEDICAL EQUIPMENT: from the surgical or CT scan tables to stretchers for latest generation ambulances, reduced size, reliability and low noise are extremely essential in this application type.

工业: 这一领域中的应用通常要求高性能、低噪声水平,以及中高水平的可靠性。对于本公司来说,液压动力领域始终是最重要的市场之一。



INDUSTRIAL: applications that usually requires high performance, low noise levels and medium to high reliability. The field of hydraulic power packs has always been amongst the most important market sectors for the Company.

农业机械: 农业领域发展迅速,需要不断发展的产品。我们产品的灵活性和高性价比更能满足这些客户要求。



AGRICULTURAL MACHINERY: the world of agriculture is rapidly growing and requires an evolving product. Flexibility and high performance/price ratio are at the forefront of the requirements for these Customers.

工程机械: 在轴、端口和法兰方面的极大灵活性,以及更好的服务水平,是帮助我们在这一市场立足的重要特征。



CONSTRUCTION MACHINERY: the necessary characteristics to support this market are extreme flexibility in terms of shaft, port and flange style as well as a higher level of service.

绿色区域: 您能想象到一个满是油渍的高尔夫球场吗?泵和马达必须保证符合防止外部污染的最严格标准。



GREEN AREAS: can you imagine a golf course with oil stains? Pumps and motors must guarantee the highest standards in external contamination.

海洋: 在用于打开隔离墙或轮船推进器的自动液压系统中,用于涡轮或管道的节流阀,以及用于大型船只的动力机组中,我们所生产的泵,尤其是微型泵得到广泛应用。



MARINE: in automatic hydraulic systems to open bulkhead, ship propellers, or throttle valve for cruise liner or pipes and power packs for big ships, our pumps especially micro pumps are widely used.

运输: 用于城市有轨电车和火车的制动系统,和机场车辆。在这个无法否认对机动性的需求的世界里,需要的是能够提供最高可靠性和安全性的产品。



TRANSPORTATION: braking systems for city trams and trains, and airport vehicles application. In a world where mobility is an undeniable necessity, products that deliver the highest level of reliability and safety are required.

微型液压系统: 这是我们的强项之一,压实度、端口/轴和法兰配置的多样性使我们与众不同。为了适应这些应用,必须采用特定的加工/处理流程。



MICRO-HYDRAULICS: this is one of our strengths where compactness, versatility of the possible configurations of ports/shafts and flanges makes all the difference. Specific machining/processing characteristics must be dedicated to these applications.

物料转运: 很多综合应用对于效率和噪声影响等方面的要求越来越高。从事这一领域的公司遍及全球,为了满足他们的要求,必须具有充足的供应能力。



MATERIAL HANDLING: a range of consolidated applications with growing requirements in terms of efficiency and noise impact. Companies operating in this sector can be found all around the world, and adequate supply capacity is necessary in order to satisfy their requirements.

市政项目: 这一用途要求能够提供全面的产品,从马达到长度尽可能短的泵。



MUNICIPALITIES: this is an application where an adequate and comprehensive range of products is needed, from motors to multiple pumps as short as possible in terms of length.

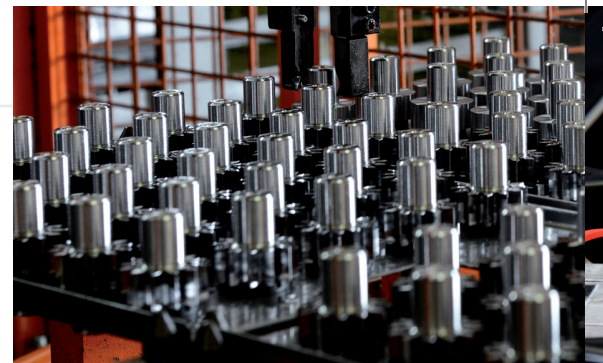
新能源: 在这些应用中,最重要的特征是可靠性和环境规范合规性不能超过限值。从风力发电与太阳能发电领域,Marzocchi Pompe 已经安装了数以千计的装置。



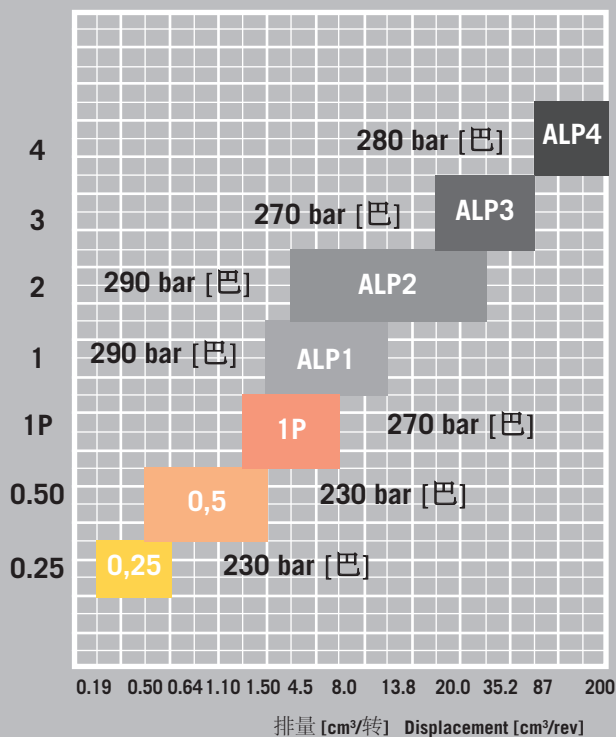
NEW ENERGY SOURCES: these are applications where reliability and compatibility with environmental specifications particularly close to the limit are the most important feature. From wind power to solar power, Marzocchi Pompe has thousands of installations under its name.

产品范围

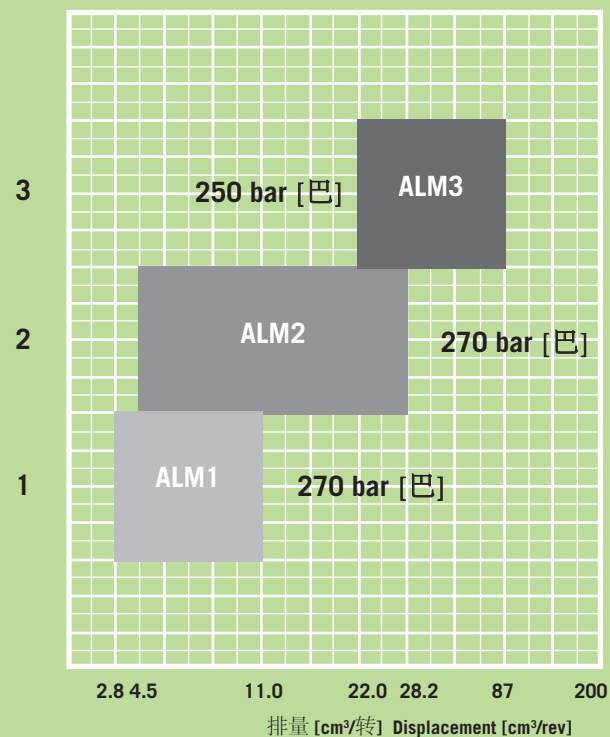
PRODUCT RANGE



ALP-铝合金齿轮泵 ALP-ALUMINIUM GEAR PUMPS



ALM-铝合金齿轮马达 ALM-ALUMINIUM GEAR MOTORS



此图显示了最大峰值压力

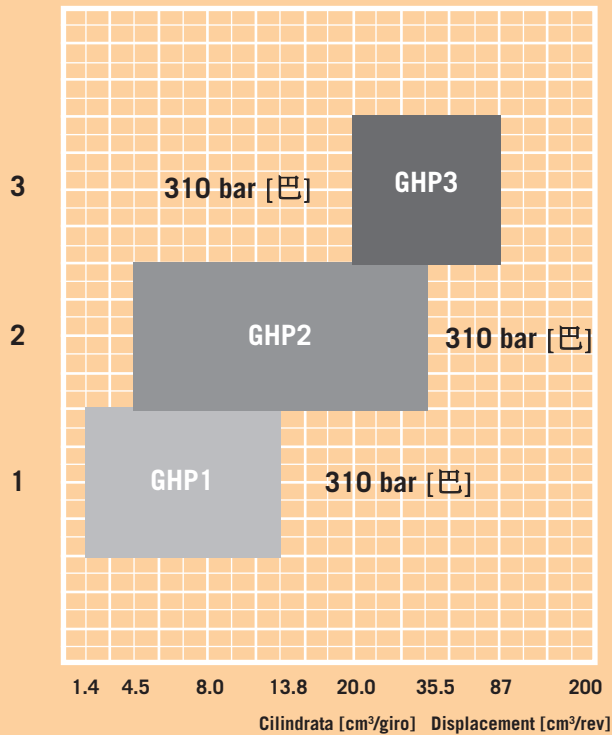
The graphs show maximum peak pressure

Marzocchi 铝齿轮泵和马达是很多应用的理想解决方案，特别适合中高压力条件。轴、端口和法兰配置方面的多样性为这些泵和马达提供了很大的灵活性。这一铝产品系列也包括模块化泵和尺寸更小的泵（短泵）。能够定制采用各类阀门的产品。铝泵系列产品的功率范围从 0.25P 到最高 4P ALM 系列马达包括在组 1 2 3

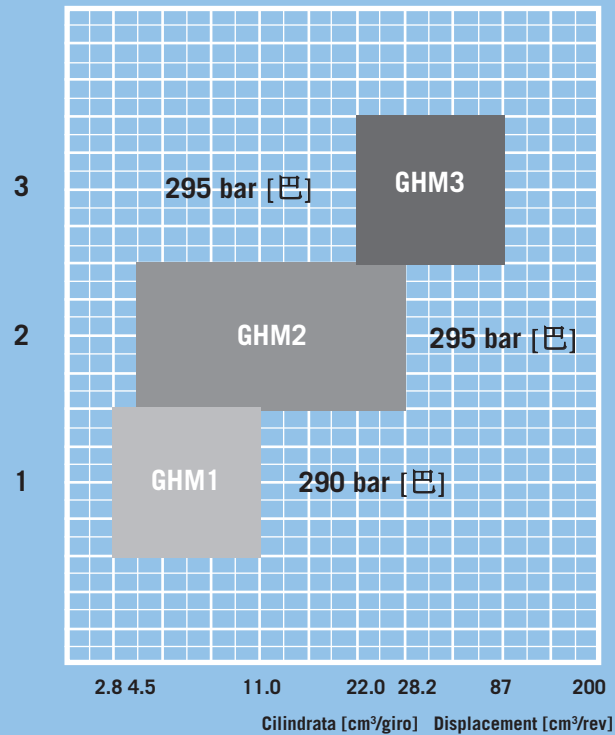
Marzocchi aluminum gear pumps and motors are the ideal solution for a wide range of applications and particularly suitable for medium to high pressure conditions. A wide possibility of configuration in terms of shafts, ports and flanges give these pumps and motors a great versatility. The series of aluminum products are also available in modular version pumps and reduced size (short pump). Possibility to customize the product with various valve types. The aluminium pumps are available from the series 0,25 up to 4. The group of ALM series motors are available in groups 1, 2, 3.



GHP-铸铁齿轮泵 GHP-CAST IRON GEAR PUMPS



GHM-铸铁齿轮马达 GHM-CAST IRON GEAR MOTORS



此图显示了最大峰值压力

The graphs show maximum peak pressure

在铸铁（封盖和法兰）和铝壳体内部的齿轮泵和马达特别适用于

所有这些处于高压条件下并且工作负荷重的应用。

在法兰，轴和可用端口方面，GHP和GHM系列产品具有多种配置。此外，集成承重支架的能力，不同类型的阀门，针对重负荷引用的轴封，都使得这一产品系列非常适合用于运送行业。

GHP系列产品在组1 2 3和3.5中可用，也拥有模块化版本，可以与ALP系列进行组装。GHP泵有小尺寸版本（短泵）。GHM系列齿轮马达包括在组1 2 3中

The gear pumps and motors in cast iron (**cover and flange**) and aluminum body are particularly dedicated to all those applications where there are high pressures and heavy working conditions.

The range of products GHP and GHM has a high versatility of configuration in terms of flanges, shafts and ports available. In addition, the possibility of integrating bearing support, different types of valves, and shaft seal for heavy duty applications make this product line extremely suited to applications in the mobile industry.

The GHP series are available in groups 1, 2, 3 and 3,5, also in a modular version and can be assembled with the ALP family. GHP pumps are available in reduced size version (short pumps). The GHM gear motors are available in groups 1, 2, 3.

产品 PRODUCTS

微型泵 > MICROPUMPS

微型液压系统是 Marzocchi Pompe 公司擅长的领域之一，得益于其广泛产品范围和泵产品的极高性能，这些产品集成在各种用途的微型动力单元中，从航空航天到海洋，从医学到汽车领域。

The micro-hydraulics is one of the sectors where Marzocchi Pompe represents a reference in the industry, thanks to its extended range of products and the very high performances of its pumps that are integrated into micro power packs used in many applications, from aerospace to marine, from medical to automotive.



0,25-05

泵 > PUMPS

产量高，性能稳定和可靠性高，这些特点使得这种产品成为液动力单元市场的标准产品，特别是在工业领域。

High production rates, consistency of performances and absolute reliability make this product a standard in the market of hydraulic power packs, especially in the industrial sector.

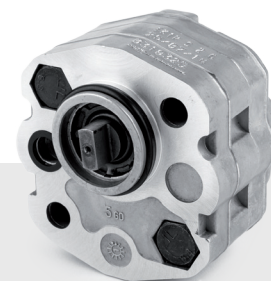


1P

泵 > PUMPS

很多年之前，移动设备的微型动力单元已经使用我们的 K1P 产品。我们所生产的 K1P 产品配置多样，使其能够用于水下用途，或者安装在法兰端口或壳体侧面。在必须节约成本的情况下，可以使用新的经济型版本 EK1P，从而在效率和噪声方面保持类似于高端版本的性能。

Since many years, the sector of mini power packs for the mobile is using our K1P products. The K1P are produced in such a wide range of configurations that allows its use for both submerged applications and external mounting with ports on the flange and/or the side of the body. A new economical version, EK1P, can be used where cost saving is a must thus maintaining similar performances in terms of efficiencies and noise as the top version.



K1P/EK1P

泵 > PUMPS

此产品范围包括不同排量的铝泵（最高 200 cm³/revolution），能够承受中高压，并使用不同规格的法兰（欧洲，德国和 SAE 标准），端口和轴。有可能实现单向以及可逆式方案。

This product range includes pump of different displacements (up to 200 cm³/rev) in a full aluminium configuration, able to withstand to medium-to-high pressures and using different versions of flanges (European, German and SAE), porting and shafts. Uni-directional as well as reversible solution are possible.

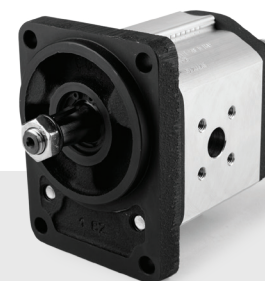


ALP

泵 > PUMPS

GHP 系列产品与 ALP 的配置相同，但在极高压力下能够保证高可靠性。铸铁的可塑性使得法兰、封盖和端口样式有很多选择，从而产生一系列专门针对移动用途设计的产品，从农业设备到施工机械。

The GHP range presents identical configurations of the ALP but guarantees an extreme reliability in very high-pressure applications. The flexibility of the cast iron allows a larger choice of flanges, covers and porting versions thus leading to a series specifically used for mobile applications, from the agriculture to the construction machines.



GHP

马达 > MOTORS

Marzocchi Pompe 产品组合中的高端产品是用于中高压力下，采用 ALM 配置的齿轮电机，适用于移动（类似风机驱动系统）和工业领域。我们也有单向和双向的内部和外部排放（前侧或后侧）马达。

Top product of the Marzocchi Pompe portfolio is the gear motor that in its ALM configuration is used when pressure rates are medium-to-high and in application for both the mobile (like in the fan drive systems) and the industrial sector. Uni-directional and bi-directional with internal and external drain (front or rear side) motors are available.



ALM

马达 > MOTORS

GHM 系列提供了采用与 ALM 系列相同配置的可能性，但由于在前法兰和后盖上使用了铸铁，使得结构更坚固。这些特性使得 GHM 系列成为极高负荷应用的理想解决方案，比如在移动市场。

The GHM series offers the same configuration possibilities as the ALM series but with more robust construction thanks to the cast iron used for both the front flange and the rear cover. These features allows GHM series to be the ideal solution in extremely heavy applications like in the mobile market.



GHM

泵和马达 > PUMPS AND MOTORS

这一方案结合了 Marzocchi 系列泵和马达的极高稳定性的特点，可以在存在径向或轴向载荷的情况下使用。为了扩大容许负荷的范围，我们提供了不同版本的轴承支撑。尤其是减少轴向宽度使其适用于可用空间极为有限的应用。

This option completes the characteristics of extreme robustness of the pumps and motors of the Marzocchi range allowing their use also in presence of radial or axial loads. Different versions of bearing supports are available in order to widen the range of loads admissible. The particularly reduced axial width allows for use in applications where available space is extremely limited.



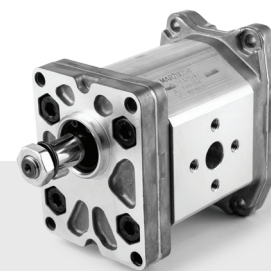
T-SYSTEM

产品 PRODUCTS

模块化泵 > MODULAR PUMPS

模块化和灵活性是这些泵最受欢迎的特点。这使得人们可以组装属于 ALP 和 GHP 型产品的泵模块（从 0.25 到 4），使得制造商和经销商能够满足客户的不同要求，并从中受益。

Modularity and flexibility are the most appreciated characteristics of these pumps. They allow the assembly of pump modules belonging to ALP and GHP type (from 0.25 up to the group 4) and so both the manufacturer and the reseller can have beneficial results meeting the different requirements from their Customers.

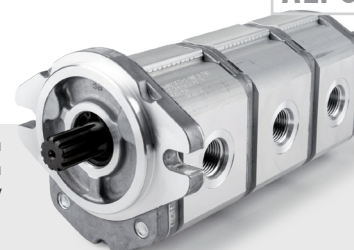


ALP-GHP

短泵 > SHORT PUMPS

当轴向可用位置很短时，不同应用可能有这样的要求，特别是移动设备，需要使用特定短型多联泵，这种泵的法兰/封盖采用铝制或铸铁结构。与模块化泵不同的是，短泵出厂时已经由 Marzocchi Pompe 组装完成。

When it is available only a reduced axial layout, possible requirements of different applications especially in the mobile machines, a specific short version of the multiple pump can be supplied and that comes with both flanges/covers in aluminium or cast iron construction. Unlike modular pumps, short pumps are supplied already assembled from Marzocchi Pompe.



ALPC/GHPC

多联泵 > MULTIPLE PUMPS

这些泵的典型应用是需要两个阶段使用不同规格的时候：第一阶段采用快速方式，第二阶段在高压条件下运行。例如劈木机、压实机和印刷机都受益于这些特征。对于这些应用来说，容积及机械效率，以及低噪声是非常重要的。

Typical applications of these pumps are where two stages at different specs are needed: fast approach for the first stage and high pressure for the second. For example the log splitters, the compactors and the presses are benefitting of such features. Applications where volumetric and mechanical efficiencies are very important as well as the low noise.

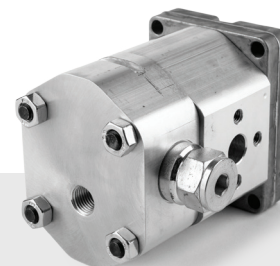


HI-LO

带阀门的泵和马达 > PUMPS AND MOTORS WITH VALVES

为了确保在压力峰值或意外停止时的真正安全，我们提供了突出封盖带有抗汽蚀阀门（VN 版）与溢流阀（VM 版）的特定版本。

In order to ensure a real safeguard from pressure peaks or accidental stops, specific version with anti-cavitation valves (VN version) and with relief valve (VM version) integrated into the extruded covers are available.



VM-VN

带阀门的泵 > PUMPS WITH VALVES

该系统允许将流量分成两个不同的支流，具有优先权的一个（例如转向装置）根据负载检测信号提供的反馈保证所需流量，而所有超量的流量都转至第二支流，从而利用第二回路的不同功能。

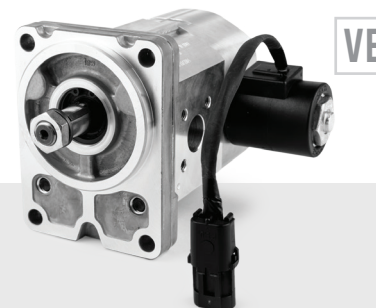
The system allows the splitting of the flow rate into two different branches, the priority one (ex. steering) guaranteeing always the flow rate required according to the feedback provided by the load sense signal, while all the excessive flows goes to second branch and therefore to independent secondary circuit for different functions.



带阀门的泵和马达 > PUMPS AND MOTORS WITH VALVES

VE 版的产品带有抗气蚀阀和电比例溢流阀，均集成在突出的铝封盖上。此版本的马达广泛应用于风机驱动系统。

The products in the VE version have an anti-cavitation valve and an electro-proportional relief valve both integrated in the extruded aluminium cover. The motors of this version are widely used in the fan drive systems.



特殊的泵和马达 > SPECIAL PUMPS AND MOTORS

受益于高度专业化以及在各种应用中的丰富经验，Marzocchi Pompe 总是对于评估客户的特殊要求有浓厚兴趣。在技术和经济方面的可行要求促使我们开发了几种特殊的泵和马达以及集成装置。

Thanks to the extreme specialization and to the know-how of the applications, Marzocchi Pompe had always a strong interest in evaluating special requests from the Customers. Requirements that if technically and economically feasible have led to the development of several solutions of special pumps and motors and integrated units as well.



配件 > ACCESSORIES

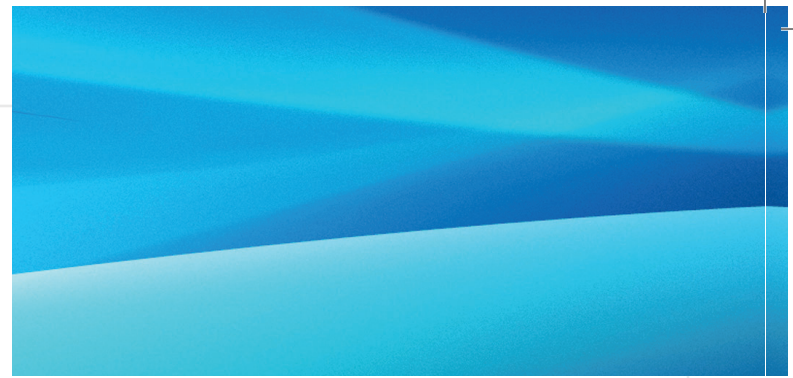
产品目录中同时还包括一系列配件，例如联轴器和弯管。我们的仓库中一应俱全。根据客户要求，我们在供应泵和马达时可以将配件提前安装完毕，使得客户可以节约采购、处理和装配产品的费用。

The product catalogue includes a series of accessories as well, like couplings and elbows. They are readily available in our warehouse. Under request, our pumps and motors can be supplied with these accessories already mounted so that Customers may save their purchase, handling and fitting on the products.

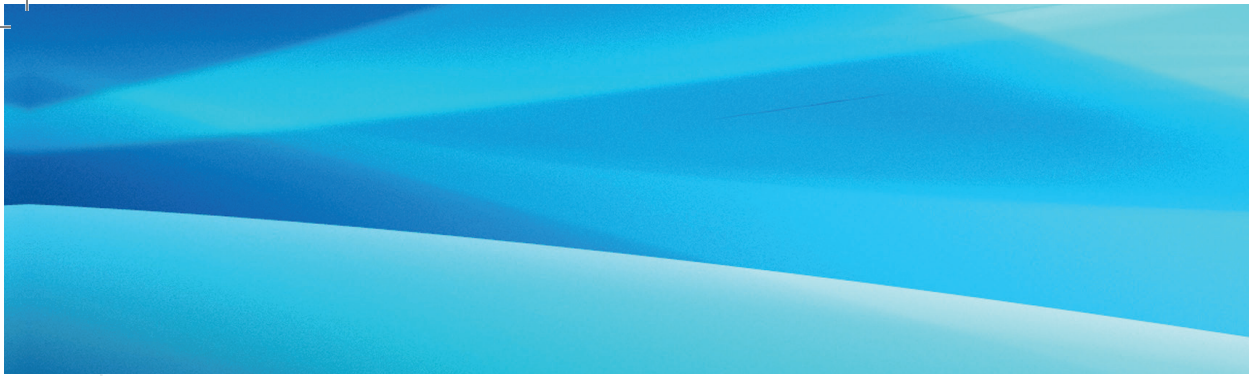


技术数据

TECHNICAL DATA



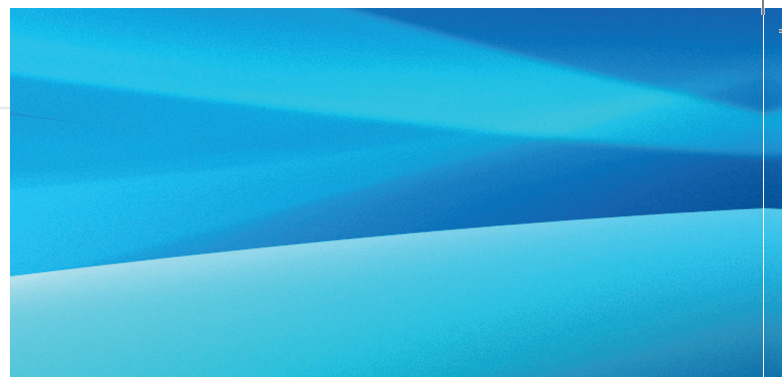
分组 GROUP	尺寸 SIZE	排量 DISPLACEMENT	1500 rpm 时流量 FLOW at 1500 rpm	最大压力 [MAX PRESSURE]						转速 [ROTATION SPEED]	
				ALP			GHP			最小值 MIN	最大值 MAX
				P1 最大连续工 作压力 P1 Max cont.	P2 最大间歇压力 P2 Max intermitt.	转速 P3 Max peak	P1 最大连续工 作压力 P1 Max cont.	P2 最大间歇压力 P2 Max intermitt.	P3 最大峰值压力 P3 Max peak		
				[巴] [bar]	[巴] [bar]	[巴] [bar]	[巴] [bar]	[巴] [bar]	[巴] [bar]	[rpm]	
0,25	18	0,19	0,27	190	210	230				1500	7000
0,25	24	0,26	0,37	190	210	230				1500	7000
0,25	30	0,32	0,46	190	210	230				1500	7000
0,25	36	0,38	0,54	190	210	230				1500	7000
0,25	48	0,51	0,73	190	210	230				1500	7000
0,25	60	0,64	0,91	190	210	230				1000	7000
0,50	0,50	0,50	0,71	190	210	230				1000	7000
0,50	0,75	0,63	0,90	190	210	230				1000	7000
0,50	1,00	0,88	1,25	190	210	230				1000	7000
0,50	1,30	1,00	1,43	190	210	230				800	6000
0,50	1,60	1,25	1,78	190	210	230				800	5000
0,50	2,00	1,50	2,14	190	210	230				800	4000
1P - K1P	1,6	1,1	1,6	230	250	270				1000	6000
1P - K1P	2	1,3	1,9	230	250	270				1000	6000
1P - K1P	2,5	1,6	2,3	230	250	270				1000	6000
1P - K1P	3,3	2,1	3,0	230	250	270				1000	6000
1P - K1P	4,2	2,7	3,8	230	250	270				800	6000
1P - K1P	5	3,2	4,6	210	230	250				800	5000
1P - K1P	5,8	3,7	5,3	210	230	250				800	4500
1P - K1P	6,7	4,2	6,0	210	230	250				800	4000
1P - K1P	7,5	4,8	6,8	190	210	230				600	3500
1P - K1P	9,2	5,8	8,3	190	210	230				600	3000
1P - K1P	11,5	8	11,4	160	180	200				600	2100



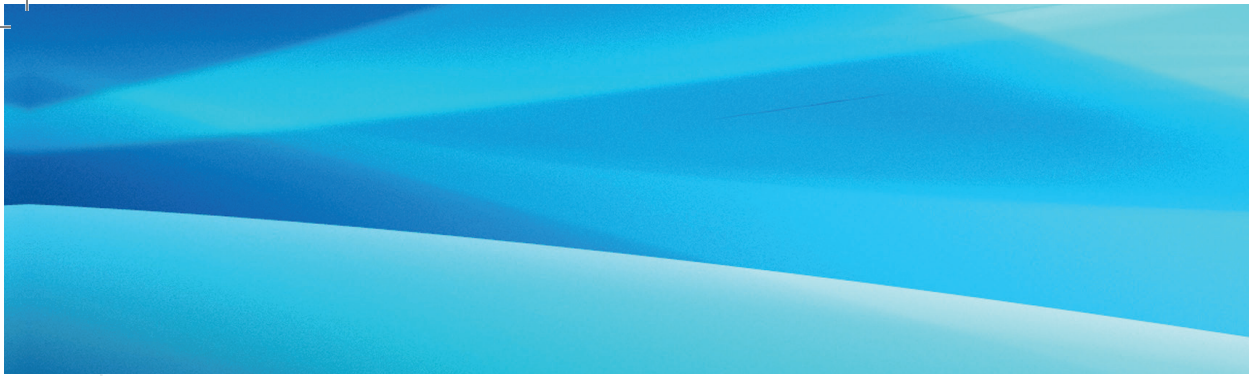
分组 GROUP	尺寸 SIZE	排量 DISPLACEMENT	1500 rpm 时流量 FLOW at 1500 rpm	最大压力 [MAX PRESSURE]						转速 [ROTATION SPEED]		
				ALP			GHP			最小值 MIN	最大值 MAX	
				P1 最大连续工作压力 P1 Max cont.	P2 最大间歇压力 P2 Max intermitt.	转速 P3 Max peak	P1 最大连续工作压力 P1 Max cont.	P2 最大间歇压力 P2 Max intermitt.	P3 最大峰值压力 P3 Max peak			
				[巴] [bar]	[巴] [bar]	[巴] [bar]	[巴] [bar]	[巴] [bar]	[巴] [bar]	[rpm]		
EK1P	1,3	0,9	1,3	210	230	250				1000	6000	
EK1P	1,6	1,1	1,6	210	230	250				1000	6000	
EK1P	2	1,3	1,9	210	230	250				1000	6000	
EK1P	2,5	1,6	2,3	210	230	250				1000	6000	
EK1P	3,3	2,1	3,0	210	230	250				800	6000	
EK1P	4,2	2,6	3,7	210	230	250				800	6000	
EK1P	5	3,2	4,6	190	210	230				800	5000	
EK1P	5,8	3,7	5,3	190	210	230				800	4500	
EK1P	6,7	4,2	6,0	190	210	230				600	4000	
EK1P	7,5	4,8	6,8	170	190	210				600	3500	
EK1P	9,2	5,8	8,3	170	190	210				600	3000	
ALP1	GHP1	2	1,4	2,0	250	270	290	270	290	310	800	6000
ALP1	GHP1	3	2,1	3,0	250	270	290	270	290	310	800	6000
ALP1	GHP1	4	2,8	4,0	250	270	290	270	290	310	800	5000
ALP1	GHP1	5	3,5	5,0	250	270	290	270	290	310	800	5000
ALP1	GHP1	6	4,1	5,8	250	270	290	270	290	310	800	4000
ALP1	GHP1	7	5,2	7,4	230	245	260	260	275	290	800	4000
ALP1	GHP1	9	6,2	8,8	230	245	260	260	275	290	800	3800
ALP1	GHP1	11	7,6	10,8	200	215	230	230	245	260	600	3200
ALP1	GHP1	13	9,3	13,3	180	195	210	210	225	240	600	2600
ALP1	GHP1	16	11	15,7	170	185	200	200	215	230	600	2200
ALP1	GHP1	20	13,8	19,7	150	165	180	180	195	210	600	1800

技术数据

TECHNICAL DATA

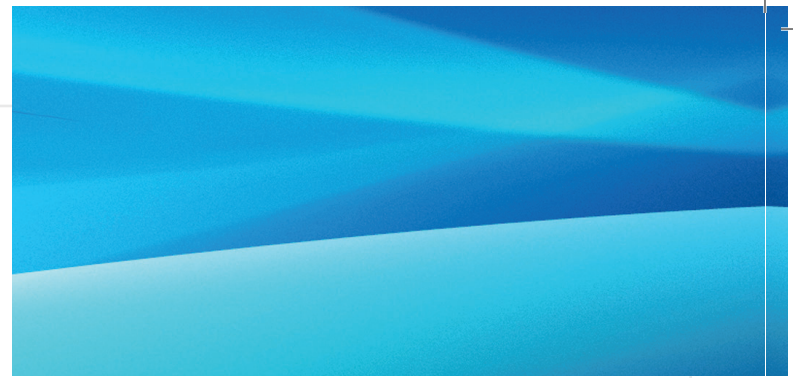


分组 GROUP	尺寸 SIZE	排量 DISPLACEMENT	1500 rpm 时流量 FLOW at 1500 rpm	最大压力 [MAX PRESSURE]						转速 [ROTATION SPEED]		
				ALP			GHP			最小值 MIN	最大值 MAX	
				P1 最大连续工 作压力 P1 Max cont.	P2 最大间歇压力 P2 Max intermitt.	转速 P3 Max peak	P1 最大连续工 作压力 P1 Max cont.	P2 最大间歇压力 P2 Max intermitt.	P3 最大峰值压力 P3 Max peak			
				[巴] [bar]	[巴] [bar]	[巴] [bar]	[巴] [bar]	[巴] [bar]	[巴] [bar]	[rpm]		
ALP2	GHP2	6	4,5	6,4	250	270	290	280	295	310	800	4000
ALP2	GHP2	9	6,4	9,1	250	270	290	280	295	310	800	4000
ALP2	GHP2	10	7	10,0	250	270	290	280	295	310	800	4000
ALP2	GHP2	12	8,3	11,8	250	270	290	280	295	310	600	3500
ALP2	GHP2	13	9,6	13,7	250	270	290	280	295	310	600	3000
ALP2	GHP2	16	11,5	16,4	230	250	270	280	295	310	600	4000
ALP2	GHP2	20	14,1	20,1	230	250	270	260	275	290	600	4000
ALP2	GHP2	22	16	22,8	210	225	240	260	275	290	600	4000
ALP2	GHP2	25	17,9	25,5	210	225	240	260	275	290	500	3600
ALP2	GHP2	30	21,1	30,1	180	195	210	230	245	260	500	3200
ALP2	GHP2	34	23,7	33,8	180	195	210	230	245	260	500	3000
ALP2	GHP2	37	25,5	36,3	170	185	200	210	225	240	500	2800
ALP2	GHP2	40	28,2	40,2	170	185	200	200	215	230	500	2500
ALP2	GHP2	50	35,2	50,2	140	155	170	160	175	190	500	2500

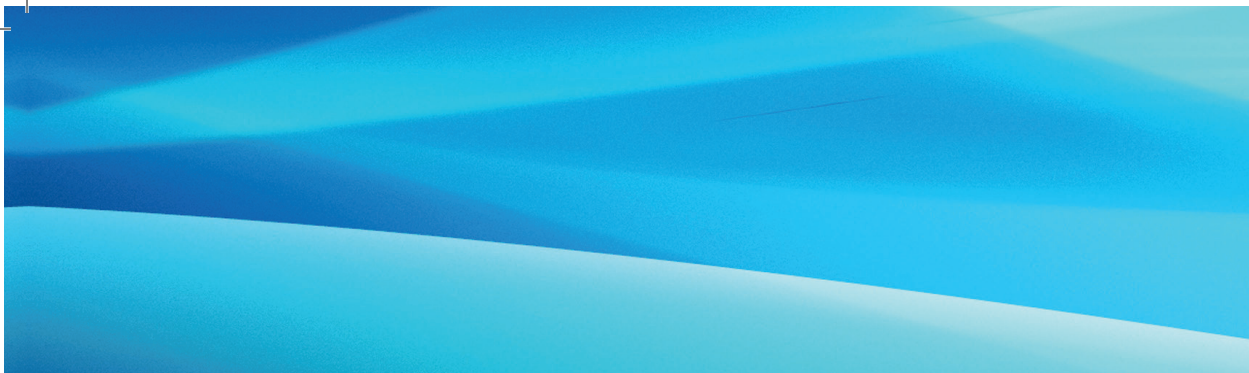


分组 GROUP	尺寸 SIZE	排量 DISPLACEMENT	1500 rpm 时流量 FLOW at 1500 rpm	最大压力 [MAX PRESSURE]							转速 [ROTATION SPEED]	
				ALP			GHP				最小值 MIN	最大值 MAX
				P1 最大连续工 作压力 P1 Max cont.	P2 最大间歇压力 P2 Max intermitt.	转速 P3 Max peak	P1 最大连续工作 压力 P1 Max cont.	P2 最大间歇压力 P2 Max intermitt.	P3 最大峰值压力 P3 Max peak			
				[巴] [bar]	[巴] [bar]	[巴] [bar]	[巴] [bar]	[巴] [bar]	[巴] [bar]	[rpm]		
ALP3	GHP3	30	20	29	230	250	270	280	295	310	500	3500
ALP3	GHP3	33	22	31	230	250	270	280	295	310	500	3500
ALP3	GHP3	40	26	37	230	250	270	280	295	310	500	3000
ALP3	GHP3	50	33	47	230	250	270	270	285	300	500	3000
ALP3	GHP3	60	39	56	220	240	260	260	275	290	500	3000
ALP3	GHP3	66	44	63	210	230	250	250	265	280	400	2800
ALP3	GHP3	80	52	74	200	215	230	230	245	260	400	2400
ALP3	GHP3	94	61	87	190	205	220	210	225	240	400	2800
ALP3	GHP3	110	71	101	170	185	200	200	215	230	400	2500
ALP3	GHP3	120	78	111	160	175	190	180	195	210	400	2300
ALP3	GHP3	135	87	124	140	155	170	160	175	190	400	2000
ALP 4		130	87	124	240	260	280				400	2800
ALP 4		160	106	151	200	220	240				400	2300
ALP 4		190	128	182	180	200	220				400	2500
ALP 4		220	147	209	170	190	210				400	2200
ALP 4		250	166	237	160	170	190				400	2000
ALP 4		270	181	258	140	150	170				400	2400
ALP 4		300	200	285	130	140	150				400	2400

技术数据 TECHNICAL DATA



分组 GROUP	尺寸 SIZE	排量 DISPLACEMENT	1500 rpm 时流量 FLOW at 1500 rpm	最大压力 [MAX PRESSURE]						转速 [ROTATION SPEED]		
				ALP			GHP			最小值 MIN	最大值 MAX	
				P1 最大连续工 作压力 P1 Max cont.	P2 最大间歇压力 P2 Max intermitt.	转速 P3 Max peak	P1 最大连续工作 压力 P1 Max cont.	P2 最大间歇压力 P2 Max intermitt.	P3 最大峰值压力 P3 Max peak			
				[巴] [bar]	[巴] [bar]	[巴] [bar]	[巴] [bar]	[巴] [bar]	[巴] [bar]	[rpm]		
ALM1	GHM1	4	2,8	4,4	240	250	270	260	270	290	700	5000
ALM1	GHM1	5	3,5	5,5	240	250	270	260	270	290	700	5000
ALM1	GHM1	6	4,1	6,5	240	250	270	260	270	290	700	4000
ALM1	GHM1	7	5,2	8,2	220	230	245	250	260	275	700	4000
ALM1	GHM1	9	6,2	9,8	220	230	245	250	260	275	700	3800
ALM1	GHM1	11	7,6	12,0	190	200	215	220	230	245	700	3200
ALM1	GHM1	13	9,3	14,7	170	180	195	200	210	225	700	2600
ALM1	GHM1	16	11	17,4	160	170	185	190	200	215	700	2200
ALM2	GHM2	6	4,5	7,1	240	250	270	270	280	295	800	4000
ALM2	GHM2	9	6,4	10,1	240	250	270	270	280	295	800	4000
ALM2	GHM2	10	7	11,1	240	250	270	270	280	295	800	4000
ALM2	GHM2	12	8,3	13,1	240	250	270	270	280	295	700	3500
ALM2	GHM2	13	9,6	15,2	240	250	270	270	280	295	700	3000
ALM2	GHM2	16	11,5	18,2	220	230	250	270	280	295	700	4000
ALM2	GHM2	20	14,1	22,3	220	230	250	250	260	275	700	4000
ALM2	GHM2	22	16	25,3	200	210	225	250	260	275	700	4000
ALM2	GHM2	25	17,9	28,3	200	210	225	250	260	275	500	3600
ALM2	GHM2	30	21,1	33,3	170	180	195	220	230	245	500	3200
ALM2	GHM2	34	23,7	37,4	170	180	195	220	230	245	500	3000
ALM2	GHM2	37	25,5	40,3	160	170	185	200	210	225	500	2800
ALM2	GHM2	40	28,2	44,5	160	170	185	190	200	215	500	2500



分组 GROUP	尺寸 SIZE	排量 DISPLACEMENT	1500 rpm 时流量 FLOW at 1500 rpm	最大压力 [MAX PRESSURE]							转速 [ROTATION SPEED]	
				ALP			GHP				最小值 MIN	最大值 MAX
				P1 最大连续工 作压力 P1 Max cont.	P2 最大间歇压力 P2 Max intermitt.	转速 P3 Max peak	P1 最大连续工作 压力 P1 Max cont.	P2 最大间歇压力 P2 Max intermitt.	P3 最大峰值压力 P3 Max peak			
				[巴] [bar]	[巴] [bar]	[巴] [bar]	[巴] [bar]	[巴] [bar]	[巴] [bar]	[rpm]		
ALM3	GHM3	33	22	35	220	230	250	270	280	295	600	3500
ALM3	GHM3	40	26	41	220	230	250	270	280	295	500	3000
ALM3	GHM3	50	33	52	220	230	250	260	270	285	500	3000
ALM3	GHM3	60	39	62	210	220	240	250	260	275	500	3000
ALM3	GHM3	66	44	69	200	210	230	240	250	265	400	2800
ALM3	GHM3	80	52	82	190	200	215	220	230	245	400	2400
ALM3	GHM3	94	61	96	180	190	205	200	210	225	400	2800
ALM3	GHM3	110	71	112	160	170	185	190	200	215	400	2500
ALM3	GHM3	120	78	123	150	160	175	170	180	195	400	2300
ALM3	GHM3	135	87	137	130	140	155	150	160	175	400	2000

上述表格中所述的流量 1500rpm 是在容积效率为 95% 的情况下计算的。

上面所描述的型号、选项和操作条件仅仅为 Marzocchi Pompe 所提供各类产品中的一小部分。如需了解更多信息，请联系我们或参阅我们的技术文档。

Marzocchi Pompe 对此目录中可能包含的任何错误不承担任何责任。除了基本规格和有关安装和使用条件的建议，本目录中提供的内容仅供参考，Marzocchi Pompe 保留随时对其产品的技术特征进行任何修改的权利，无需事先通知。当此产品作为特定应用的一部分使用时，或者您对产品是否适合适用于一个或多个特殊应用有任何疑问，请联系 Marzocchi Pompe 的技术销售服务部门。

The flow at 1500 rpm stated in the above tables is calculated by taking a volumetric efficiency of 95%.

The models, the options and the operating conditions described above are only a small part of the wide range of products supplied by Marzocchi Pompe. Please contact us or consult our technical documentation for more information.

Marzocchi Pompe declines all responsibility or any errors this catalogue may contain. Apart from the general specifications and recommendations concerning installation and conditions of use, the content of this catalogue is provided for information purposes only and Marzocchi Pompe reserves all rights to make any changes to the technical features of its products at any time and without prior warning. In the event the products will be used as part of specific applications or you have any doubts about whether or not the products can be used for one or more special applications, please feel free to contact our Technical-Sales Service at Marzocchi Pompe.



Marzocchi Pompe SpA
Via 63a Brigata Bolero, 15
40033 Casalecchio di Reno Bologna - Italia
Tel.: +39 051 6137511
Fax: +39 051 592083
E-mail: info@marzocchipompe.com
Web: www.marzocchipompe.com

Marzocchi Pumps USA Corp.
1355 Bowes Road
Elgin, IL 60123
Tel. office: +1 847-923-9910
Tel. toll free: 800-924-5404
Fax: +1 847-923-9937
E-mail: pumps@marzocchipumpsusa.com
Web: www.marzocchipumpsusa.com

Marzocchi (Shanghai) Trading Co., Ltd.
马佐基（上海）贸易有限公司
中国上海市静安区石门一路116号311室
邮编: 200040
电话: +86 021 63012989
电子信箱: info.asia@marzocchipompe.com
Web: www.marzocchipompe.com