

Sy // 三字液压
SANYU HYDRAULIC

SY1750

SAN YU
BREAKER

HYDRAULIC BREAKER

三字破碎锤

烟台三字机械设备有限公司
Yantai Sanyu Machinery Equipment Co., Ltd

企业介绍

COMPANY INTRODUCTION



2003

三字成立
SANYU Set up

2008

年产量超过
2万台
Annual output
exceeds 20,000 SET

2015

已可以生产多种型号
破碎锤，经销商
遍布全国
Dealers all over the country,
Can production of
multiple models breaker

进军国外市场，出口额
达到 3000 万，质量得
到国际认可
Entering foreign markets, export
value Reached 30 million, quality
To international recognition

2018

2019

三字分公司成立，全新的生产车间
严抓质量，已拥有专利数个，研发
全新型号破碎锤，并开始进行微挖
研发及生产

Sanyu branch was established, and the brand-
new production workshop strictly controlled the
quality, Has owned several patents, developed
many new models of hammers, And began to
develop and produce mini excavator

WELCOME

烟台三字机械设备有限公司，成立于 2003 年，国内首家引进国外技术，生产并销售微型液压破碎锤企业，开创了国内小型液压破碎锤的先河。拥有先进的技术设备，和成熟的产品质量，从生产加工到销售，实现工贸一体，并融合“互联网+”的销售模式，在中国市场赢得了口碑，在多个省市地区都有代理商服务。

三字机械经过近 20 年的市场竞争，现如今已可以生产各种型号液压破碎锤，并且支持各种挖掘机属具的定做，拥有完善的设计和定制服务体系，为客户提供更多的选择。

在 2018 年进军国外市场，在东南亚地区、欧洲地区、中东地区、巴基斯坦等地区和国家，均可见到 SANYU 的产品，并为多个国外品牌代加工，在国际上也充分得到认可。

烟台三字 卓越品质，寰宇非凡，期待您的光临！

Yantai Sanyu Machinery Equipment Co., Ltd. was established in 2003. It was the first domestic enterprise to introduce foreign technology, produce and sell micro hydraulic breakers, and set a precedent for domestic small hydraulic breakers. With advanced technical equipment and mature product quality, from production and processing to sales, the integration of industry and trade, and the integration of the "Internet +" sales model have won word of mouth in the Chinese market and have agents in many provinces and cities service.

After nearly 20 years of market competition, Sanyu Machinery can now produce various types of hydraulic breakers, and support the customization of various excavator attachments. It has a complete design and customized service system to provide customers with more choices.

In 2018, it entered the foreign market. SANYU products can be seen in Southeast Asia, Europe, the Middle East, Pakistan and other regions and countries, and it is processed for many foreign brands. It is also fully recognized internationally.

我们的品牌

Our brand

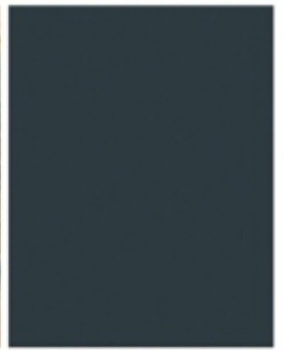
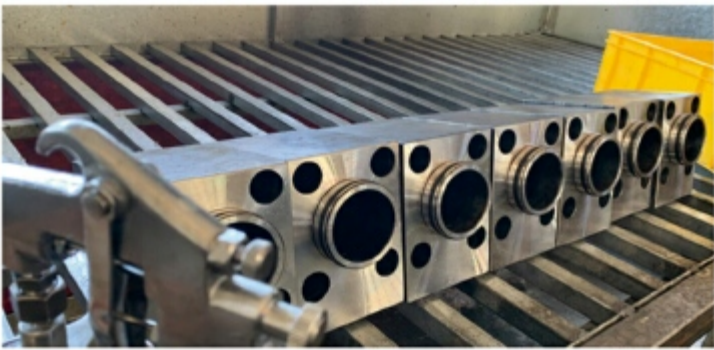


UUSDS
山斗士

DMT
达门特

用心铸造品质 Casting quality with heart



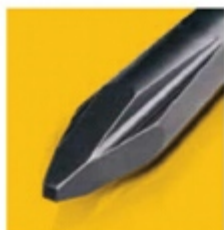




SANYU

Hydraulic Breaker

三宇液压破碎锤



开槽菱形钎杆
Slotting Rhombus Chisel



开槽楔形钎杆
Slotting Wedge Chisel



菱形钎杆
Rhombus Chisel



楔形钎杆
Wedge Chisel



钝形钎杆
Blunt Chisel



锥形钎杆
Conical Chisel



宽凿钎杆
Wide Chisel



沥青切割凿
Asphalt Cutter Chisel

- 楔形 钎杆：适用于在软 / 中硬度的层状岩石上破碎或沥青路面破碎、混凝土结构拆除。
 - 菱锥形钎杆：（也叫金字塔形）适用于软 / 中等硬度石块的开发及代替二次爆破，也适用于高硬度混凝土破碎或软的非层状岩石。
 - 钝形 钎杆：适用于破碎中等硬度石块或切小尺寸石块。
 - 圆锥形钎杆：使用最广泛，适用于各种拆迁作业、道路、桥梁及土木工程。
 - 宽凿形钎杆：不太常见，一般用于切割沥青路面。
- Wedge chisel: suitable for crushing on soft/medium-hardness layered rocks or asphalt pavement crushing, concrete structure demolition.
 - Rhombic chisel: (also called pyramid shape) suitable for the mining of soft/medium hardness stones and to replace secondary blasting, It is also suitable for broken high-hardness concrete or soft non-layered rocks.
 - Blunt chisel: suitable for crushing medium-hard rocks or cutting small-size rocks.
 - Conical chisel: the most widely used, suitable for various demolition operations, roads, bridges and civil engineering.
 - Wide chisel: not very common, generally used for cutting asphalt pavements.



侧装式破碎锤 Top Type

- 侧面安装, 适合侧装于挖掘机进行破碎锤作业
- 结构坚固, 经久耐用
- 外壳半开放式, 便于维修
- Side-mounted, suitable for side-mounted on an excavator for breaking hammer operations
- Robust structure, durable
- Semi-open shell for easy maintenance

顶装式破碎锤 Side Type

- 顶部安装, 适合顶装于挖掘机进行破碎锤作业
- 上部转动头可更换, 通用性更好
- 整体长度长, 破碎距离远
- 外壳半开放式, 便于维修
- Top-mounted, suitable for top-mounted on excavators for breaking hammer operations
- The upper rotating head can be replaced, and the versatility is better
- Long overall length, long crushing distance
- Semi-open shell for easy maintenance



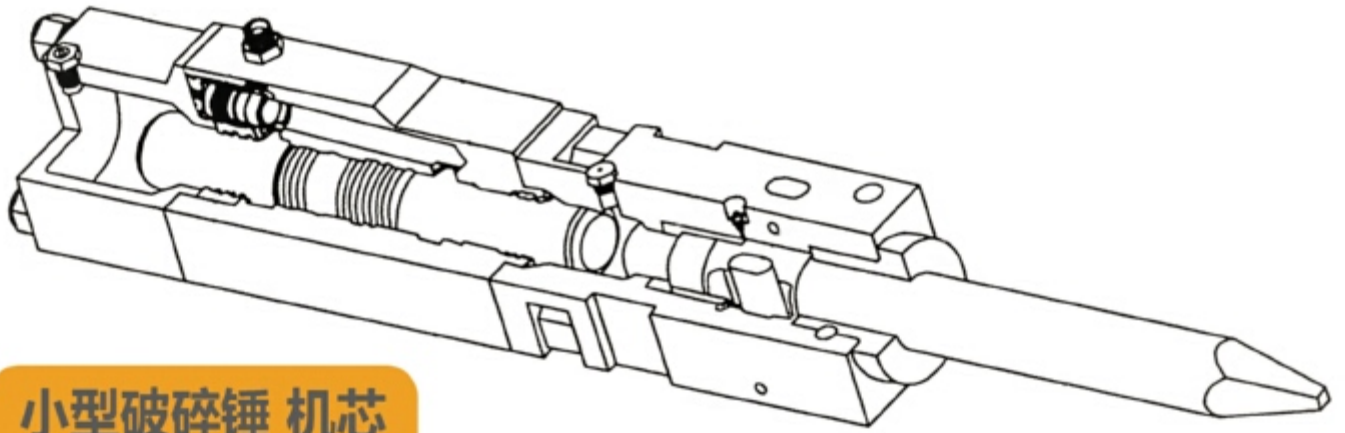
静音式破碎锤 Silence Type

- 顶部安装, 适合顶装于挖掘机进行破碎锤作业
- 上部转动头可更换, 通用性更好
- 整体长度长, 破碎距离远
- 全封闭结构, 噪音低
- Top-mounted, suitable for top-mounted on excavators for breaking hammer operations
- The upper rotating head can be replaced, and the versatility is better
- Long overall length, long crushing distance
- Fully enclosed structure, low noise

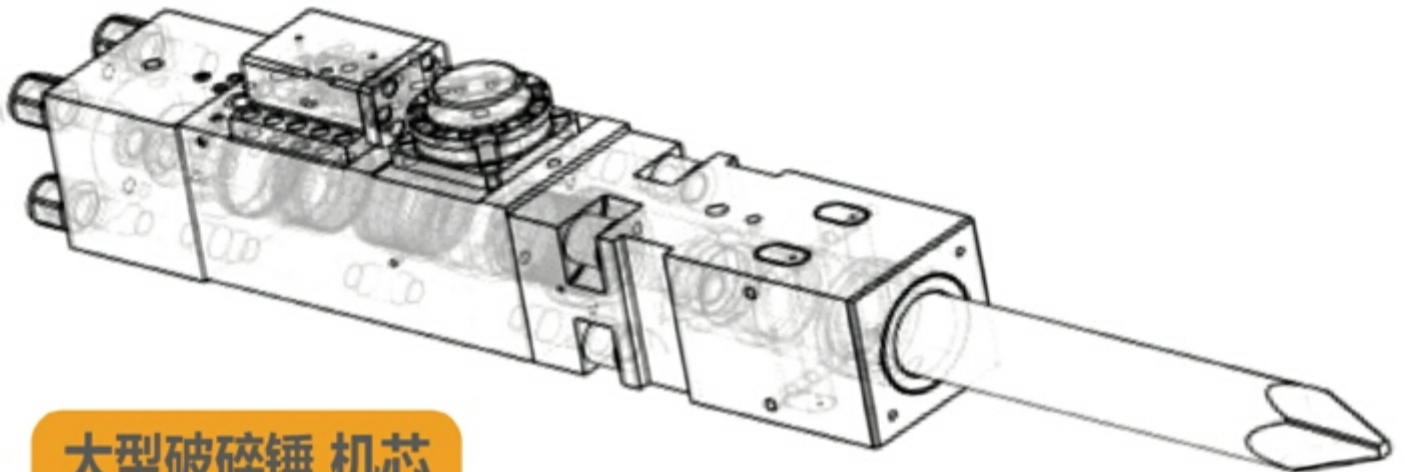
产品应用范围 Applications

- 矿山开采 —— 开山、开矿、二次破碎、格筛破碎
- 冶金 —— 钢包、炉渣清理、拆炉解体, 设备基础拆除
- 公路 —— 高速公路补修、水泥路面破碎、基础开挖
- 铁路 —— 开山、隧道掘进、道桥拆除、路基夯实
- 建筑 —— 就减除拆除、钢筋混泥土破碎
- 船舶修造 —— 船体除蚌、除锈
- 其他 —— 破冰、破动土、砂型振捣
- Mine mining —— mining, secondary crushing, grid crushing
- Metallurgy —— ladle, slag cleaning, furnace dismantling, equipment foundation removal
- Highways —— highway repairs, cement pavement broken, foundation excavation
- Railway —— mountain breaking, tunnel excavation, road and bridge demolition, roadbed consolidation
- Building —— just eliminate demolition and broken reinforced concrete
- Ship repair —— hull removal of clams and rust
- Others —— ice breaking, soil breaking, sand vibration

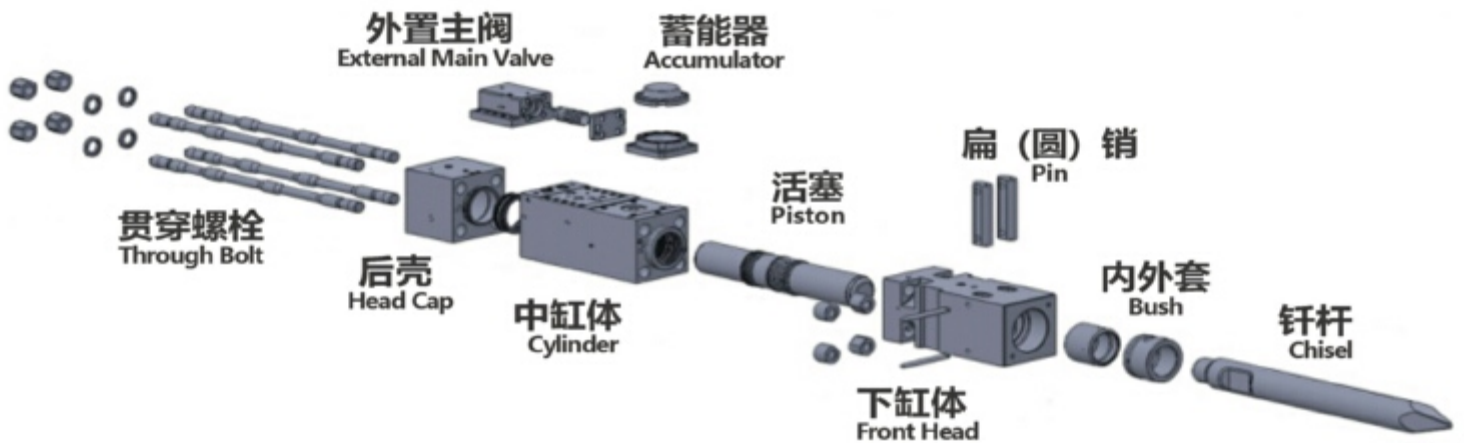
三字系列破碎锤 SANYU Series Breaker

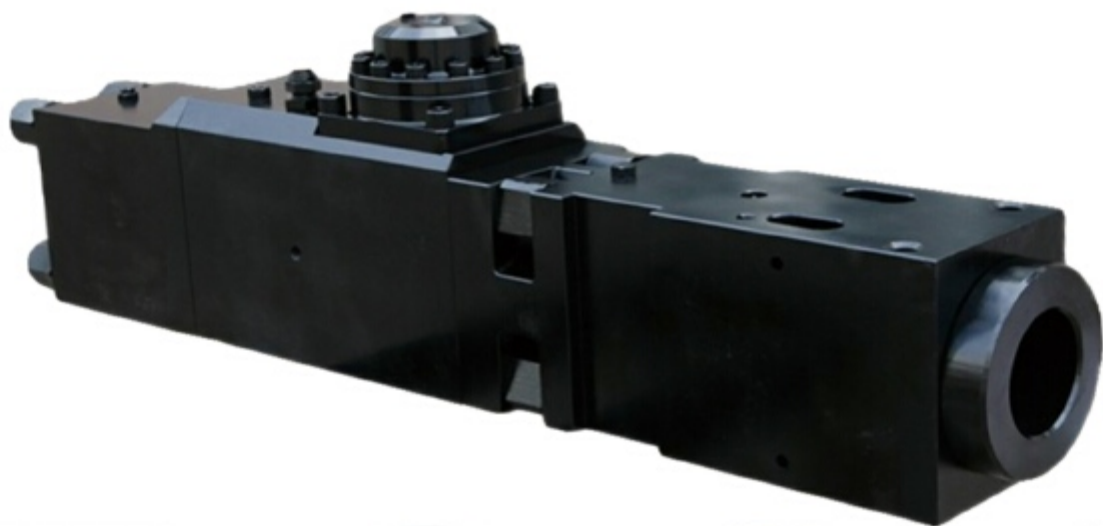


小型破碎锤 机芯
Small breaker main body



大型破碎锤 机芯
Large breaker main body





中缸总成

Middle Cylinder Assembly



缸体

Cylinder



内套

Inner Bush



外套

Outer Bush



油封固定器

Oil Seal Retainer



油封

Seal Kit



钎杆

Chisel



轴

Axis



活塞

Piston



主阀

Main Valve



螺栓

Bolt



扁销 圆销

Pin

SANYU HYDRAULIC BREAKER PARAMETERS

三字液压破碎锤参数

目录 / 型号 Item/Model	SY400	SY450	SY530	SY600	SY680	SY750	SY850	SY1000
重量 (Kg) 三角 / 直立 / 静音 Weight(Kg)/Side/Top/Silence	70/72/102	95/95/129	158/158/165	190/180/231	275/300/400	380/409/450	500/580/680	761/866/1007
工作油压 (Kg/cm ²) Operating Pressure	90-120	90-120	90-120	100-130	100-140	120-150	130-160	150-170
驱动流量 (L/min) Required Oil Flow	15-30	20-40	25-55	30-60	40-70	50-90	60-100	80-110
打击频率 (bpm) Impact Rate	800-1400	700-1200	600-1250	500-1000	500-900	400-800	400-800	350-700
钎杆直径 (mm) Chisel Diameter	40	45	53	60	68	75	85	100
配用车重 (ton) Excavator Weight	0.8-2.5	1.2-3.0	2.0-4.5	3.0-5.5	5.0-7.0	6.0-9.0	7.0-14	11-16

目录 / 型号 Item/Model	SY1250	SY1350	SY1400	SY1400A	SY1500
重量 (Kg) 三角 / 直立 / 静音 Weight(Kg)/Side/Top/Silence	1277/1308/1371	1688/1868/1918	1770/1800/2004	1805/2090/2042	2218/2380/2457
工作油压 (Kg/cm ²) Operating Pressure	150-170	160-180	160-180	680-180	180-200
驱动流量 (L/min) Required Oil Flow	90-120	100-150	120-180	120-180	150-190
打击频率 (bpm) Impact Rate	350-650	400-800	350-700	350-700	350-650
钎杆直径 (mm) Chisel Diameter	125	135	140	140	150
配用车重 (ton) Excavator Weight	15-18	16-21	18-26	18-26	27-35

目录 / 型号 Item/Model	SY1550	SY1650	SY1750	SY1850	SY1950
重量 (Kg) 三角 / 直立 / 静音 Weight(Kg)/Side/Top/Silence	2577/2754/2968	2751/2916/3165	3902/3910/4470	4227	4867
工作油压 (Kg/cm ²) Operating Pressure	180-200	180-220	180-220	180-220	180-220
驱动流量 (L/min) Required Oil Flow	180-240	200-260	210-290	220-270	220-270
打击频率 (bpm) Impact Rate	300-450	250-400	200-350	200-250	180-200
钎杆直径 (mm) Chisel Diameter	155	165	175	185	195
配用车重 (ton) Excavator Weight	28-36	30-40	38-50	42-55	45-70

轻型液压破碎锤 Light Hydraulic Breaker

SY400 SY450 SY530
SY600 SY680 SY750
SY850 SY1000



中型液压破碎锤 Medium Hydraulic Breaker

SY1250 SY1350 SY1400
SY1400A SY1500



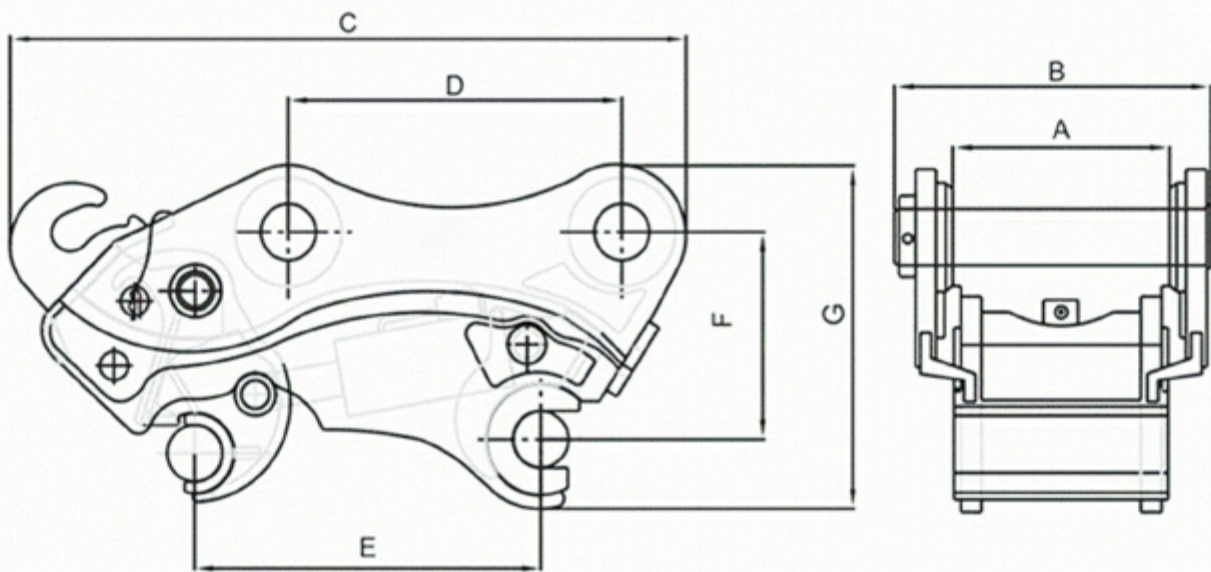
重型液压破碎锤 Heavy Hydraulic Breaker

SY1550 SY1650 SY1750
SY1850 SY1950



三字快速连接器

目录 / 型号 Item/Model	SQC01	SQC02	SQC03	SQC04	SQC05	SQC06	SQC07
总长度 (mm) Total Length	306-475	534-545	600	765	924-944	983-1050	1006-1173
总高度 (mm) Total Height	230-268	307	310	388	492	574	558-610
总宽度 (mm) Total Width	175-242	258-263	270-280	353-436	449-483	543-568	606-663
销轴中心距 (mm) Pin Center Distance	80-200	230-270	290-360	380-420	460-480	473-540	550-620
小臂开档 (mm) Forearm Spacing	86-185	155-170	180-200	232-315	306-340	375-411	416-469
上下轴间距 (mm) Top to Bottom Pin Distance	159-165	195	195	220	275	300	360
销轴直径 (mm) Pin Diameter	25-40	45-50	50-55	60-70	70-80	80-90	90-100
配用车重 (ton) Excavator Weight	0.8-4.5	4-7	5-8	9-19	17-23	23-30	33-45



SANYU HYDRAULIC ROTARY GRAPPLE

三字旋转式抓木器

目录 / 型号 Item/Model	SG03	SG04	SG06	SG08	SG10	SG14	SG20
重量 (kg) Weight	320	390	740	1380	1700	1900	2100
开口尺寸 (mm) Max.Jaw opening	1300	1400	1800	2300	2500	2500	2700
工作压力 (kg/cm ²) Oil Pressure	110-140	120-160	150-170	160-180	160-180	180-200	180-200
工作流量 (L/min) Operating Flux	30-55	50-100	90-110	100-140	130-170	200-250	250-320
油缸容量 (ton) Cylinder Volume	4.0*2	4.5*2	8.0*2	9.7*2	12*2	12*2	14*2
配用车重 (ton) Excavator Weight	4-6	7-11	12-16	17-23	24-30	31-40	41-50



SANYU HYDRAULIC COMPACTOR

三字夯实器

目录 / 型号 Item/Model	SC03	SC06	SC08	SC10
重量 (kg) Weight	300	500	900	950
打击力 (ton) Power of impulse	4	6.5	15	15
工作压力 (kg/cm ²) Oil Pressure	100-130	100-130	150-200	150-200
工作流量 (L/min) Operating Flux	45-75	85-105	120-170	120-170
夯板尺寸 L*W*T (mm) Bottom area	900*550*25	1160*700*28	1350*900*30	1350*900*30
配用车重 (ton) Excavator Weight	4-9	11-16	17-23	23-30



SANYU SINGLE CYLINDER HYDRAULIC SHEAR

三字单缸液压剪

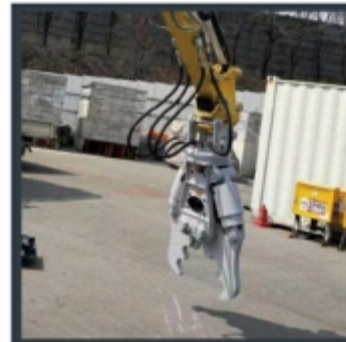
目录 / 型号 Item/Model	SDC01	SDC02	SDC03	SDC04
重量 (kg) Weight	130	205	350	500
破碎力 (ton) Crushing Force	20	22.5	47	47
工作压力 (kg/cm ²) Oil Pressure	180	210	210	230
最大开口 (mm) Max Opening	287	355	440	515
高度 宽度 H*W (mm) Height and Width	948*519	1112*355	1287*440	1525*515
配用车重 (ton) Excavator Weight	0.8-1.5	1.5-3.0	3-5	5-8



SANYU DOUBLE CYLINDER HYDRAULIC SHEAR

三字双缸液压剪

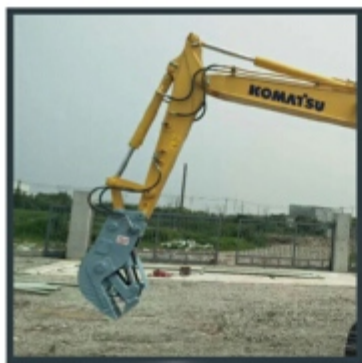
目录 / 型号 Item/Model	STC06	SDC08	SDC10	SDC14
重量 (kg) Weight	1345	2164	3060	4052
中部破碎力 (ton) Middle Crushing Force	66*2	78*2	125*2	174*2
工作压力 (kg/cm ²) Oil Pressure	300	320	320	320
最大开口 (mm) Max Opening	650	950	1100	1200
高度 宽度 H*W (mm) Height and Width	1888*1175	2374*1360	2480*1540	2700*1700
配用车重 (ton) Excavator Weight	15-18	20-25	28-35	38-50



SANYU HYDRAULIC PULVERISER

三字粉碎钳

目录 / 型号 Item/Model	SHP04	SHP06	SHP08	SHP10
重量 (kg) Weight	600	1350	1750	2750
破碎力 (ton) Crushing Force	83	105	165	225
工作压力 (kg/cm ²) Oil Pressure	230	300	320	380
最大开口 (mm) Max Opening	557	730	900	1015
长度 宽度 L*W (mm) Length and Width	1720*658	2000*660	2150*706	2374*860
配用车重 (ton) Excavator Weight	6-12	12-18	18-26	26-30





烟台三字机械设备有限公司
YANTAI SANYU MACHINERY EQUIPMENT CO.,LTD

卓越品质·寰宇非凡

 WWW.XANWOOD.COM

 info@ytsanyu.com

 山东省烟台市福山区凤凰山路216号
No.216 Fenghuangshan Road, Fushan District, Yantai City, Shandong Province

联系我们：
CONTACT

karlin-itd@ytsanyu.com

+86 18153583753