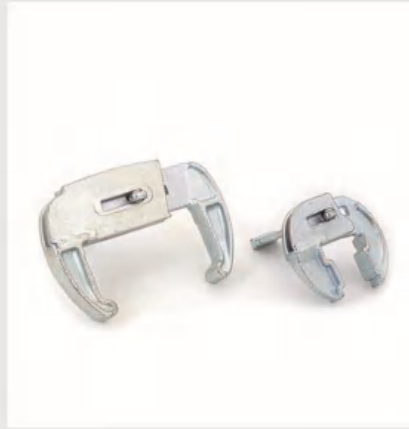




品正金属

SPECIALIZED SCAFFOLDING MANUFACTURER



山东品正金属制品有限公司

SHANDONG PINZHENG METAL PRODUCTS CO., LTD



山东品正金属制品有限公司

SHANDONG PINZHENG METAL PRODUCTS CO., LTD

企业简介

山东品正金属制品有限公司（前身日照市伟杰金属加工厂）坐落于海滨城市山东省日照市经济技术开发区，公司创立于2017年，厂房占地面积2万余平方米；全厂职工160人，其中工程技术人员12人，熟练的锻造加工人员95人。我司拥有完善的产品质量检测设备，以及1600吨、630吨等锻压生产线6条和机械加工等设备60余台。目前公司产品主要有出口美国的拖车轴、圆盘座；出口欧洲市场的高端建筑模板配件、脚手架配件和国内市场的气缸盖，拨叉，发动机支架及船舶配件等产品。公司今后将致力于国内汽车领域以及国际模板配件、机械加工锻造等方面的发展。

我司秉承“客户至上，质量第一；精细管理，诚信经营”的理念，通过了ISO9001：2015国际质量体系认证IATF16949汽车行业管理系认证和欧洲的EN74欧式脚手架扣件证书，并通过对公司员工的技术教育和知识考核，强化公司领导和员工的质量生存认识。我们将一定会给您提供最好质量的产品！



Shandong Pinzheng Metal Products Co., Ltd. (formerly Rizhao Weijie Metal Processing Factory) is located in the economic and technological development zone of Rizhao, Shandong Province. Our company was founded in 2017, the workshop covers an area of more than 20,000 square meters; there are 160 employees, including 12 technical engineer, and 95 skilled forging and processing personnel. Our company has comprehensive product quality testing equipment, as well as 6 forging production lines of 1600 tons, 630 tons and more than 60 sets of mechanical processing equipment. At present, the company's products mainly include high-end construction formwork accessories, scaffolding accessories which are exported to the European market; trailer axles and disc seats exported to the United States; and cylinder heads, shift forks, engine support brackets and ship accessories exported to the domestic market.

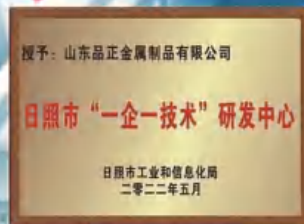
Our company adheres to the concept of "customer first, quality first; fine management, honest management". We have passed the ISO9001:2015 international quality system certification, IATF16949 Automotive Industry Management system certificate and EN74 European scaffolding couplers certificate. We sincerely welcome your visit and look forward to work with you!





CERTIFICATION

企业资质



CONTENT

目录



1 模板配件 7-10页
Formwork Accessories



2 脚手架扣件 11-14页
Scaffolding Couplers



3 脚手架 15-18页
Scaffolding



4 脚手架配件 19-20页
Scaffolding Accessories



5 其他 21页
Others



PZ-FTR
螺杆
Tie Rod
Ø15/17mm
1.0m 3.0m 6.0m



PZ-FW01
铸造螺母
Ductile Wing Nut
0.3kg



PZ-FW02
铸造螺母
Ductile Wing Nut
Ø100mm 0.6kg



PZ-FW03
铸造螺母
Ductile Wing Nut
Ø110mm 0.72kg



PZ-FW04
铸造螺母
Ductile Wing Nut
Ø90mm 0.5kg



PZ-FW05
锻造螺母
Forged Wing Nut
Ø130mm 1.25kg



PZ-FW06
锻造螺母
Forged Wing Nut
Ø100mm 0.70kg



PZ-FW07
锻造螺母
Forged Wing Nut
Ø110mm 0.85kg



PZ-FW08
铸造螺母
Ductile Wing Nut
Ø110mm 0.90kg



PZ-FW09
六角螺母
Hex Nut
50mm 100mm



PZ-FW10
双头螺母
Water Barrier
Ø60mm 0.45kg



PZ-FW11
方盘螺母
Anchor Plate
120x120mm 1.30kg



PZ-FW12
铸造方盘螺母
Anchor Plate
120x120mm
1.20kg



PZ-FW13
锻造圆盘螺母
Forged Anchor Nut
Ø120mm 1.10kg



PZ-FW14
锻造方盘螺母
Forged Anchor Nut
120x120mm
1.50kg



PZ-FW15
锻造圆盘螺母
Forged Anchor Nut
Ø140mm 1.38kg



PZ-FR01
冲压夹紧器
Spring Clamp
Ø8-10mm 0.41kg



PZ-FR01A
冲压夹紧器
Spring Clamp
Ø8-10mm 0.31kg



PZ-FR02
夹紧器
Wedge Clamp
Ø8-10mm 0.45kg



PZ-FR03
紧线器
Tightening Clamp
1.35kg



FC-FR04
紧线器
Tensor Clamp
3.00kg



PZ-FC05
模板夹
Panel Clamp
2.9kg



PZ-FC06
模板夹
Panel Clamp
2.8kg



PZ-FC07
模板夹
Panel Clamp
4.85kg



PZ-FC08
模板夹
Panel Clamp
6kg



PZ-FC09
模板夹
Formwork Clip
0.48kg



PZ-FC10
模板夹
Panel Clamp
3.60kg



PZ-FC11
模板夹
Panel Clamp
4.30kg

模板配件

FORMWORK ACCESSORIES



PZ-FC12
模板夹
Panel Clamp 5.10kg



PZ-FC13
模板夹
Panel Clamp 3.20kg



PZ-FC14
模板夹
Panel Clamp 1.28kg



PZ-FC15
模板夹
Panel Clamp 0.95kg



PZ-FC16
锻造立柱丝母
Forged Prop Nut
Ø60 1.30kg



PZ-FC17
锻造立柱丝母
Forged Prop Nut
Ø63 0.75kg



PZ-FC18
锻造立柱丝母
Forged Prop Nut
Ø60 0.87kg



PZ-FC19
锻造立柱丝母
Forged Prop Nut
Ø76 1.23kg



PZ-FC20
锻造立柱丝母带把手
Forged Prop Nut
Ø60mm 1.10kg



PZ-FC21
锻造立柱丝母带把手
Forged Prop Nut
Ø76mm 1.33kg



PZ-FC22
锻造立柱丝母带把手
Forged Prop Nut
Ø76mm 1.20kg



PZ-FC23
锻造立柱丝母带把手
Forged Prop Nut
Ø76mm 1.82kg



PZ-FC24
锻造插销
Forged Pin 0.9kg



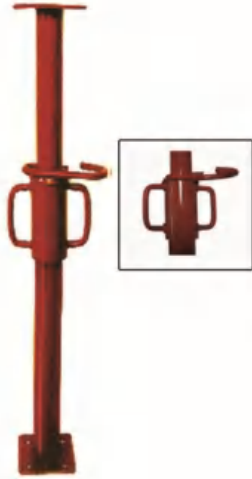
PZ-FC25
锻造插销
Forged Pin 0.57kg



PZ-FC26
锻造插销
Forged Pin 0.14kg



PZ-FC27
锻造T头螺栓
Forged T-Head Tie Rod
350mm 0.68kg



PZ-FS01
可调立柱
Shoring Prop
Ø48X2.5mm
Ø57X2.5mm

Size/ mm	Weight/ kg
1070-1820mm	8.87kg
1600-2900mm	11.72kg
1750-3120mm	12.6kg
1982-3352mm	13.4kg
2000-3500mm	14.16kg
2290-3550mm	13.93kg
2200-4000mm	15kg
2590-3950mm	15.1kg
2600-4720mm	17.76kg
3200-4870mm	18.3kg



PZ-FS02
可调立柱
Shoring Prop
Ø48X3.8mm
Ø60X3.8mm

Size/ mm	Weight/ kg
1050-1830mm	13.9kg
1600-2800mm	18.4kg
1900-3400mm	21.23kg
2200-4000mm	23kg
3100-4900mm	27.78kg



PZ-FT01
轻型三角架
Light Duty Type Tripod
Ø40-80mm 7.6kg

PZ-FT02
重型三角架
Heavy Duty Type Tripod
Ø40-80mm 11kg



PZ-FF01
焊接叉子
U-Fork Head
2.1kg



PZ-FF02
焊接叉子
U-Fork Head
2.6kg



PZ-C01
英式直角扣件
British Type Forged Double Coupler
48.3mm 0.95kg



PZ-C02
英式旋转扣件
British Type Forged Swivel Clamp
48.3mm 1.05kg



PZ-C03
英式直角扣件
British Type Forged Double Clamp
48.3mm 1kg



PZ-C04
英式旋转扣件
British Type Forged Swivel Clamp
48.3mm 1.1kg



PZ-C05
英式直角扣件
British Type Forged Double Clamp
48.3mm 0.98kg



PZ-C06
英式旋转扣件
British Type Forged Swivel Clamp
48.3mm 1.1kg



PZ-C07
英式防滑直角扣件
British Type Forged Anti-slip Double Coupler
48.3mm 1kg



PZ-C08
英式防滑旋转扣件
British Type Forged Anti-slip Swivel Coupler
48.3mm 1.15kg



PZ-C09
猪耳扣件
Forged Putlog Coupler
48.3mm 0.65kg



PZ-C09A
猪耳扣件
Forged Putlog Coupler with Saddle Bolt
48.3mm 0.65kg



PZ-C10
固板扣件
Forged Board Retaining Coupler
48.3mm 0.6kg



PZ-C11
梯型扣件
Fixed Girder Coupler
48.3mm 1.5kg



PZ-C11A
顶板扣件
Swivel Girder Coupler
48.3mm 1.6kg



PZ-C12
德式直角扣件
German Type Forged Double Coupler
48.3mm 1.25kg



PZ-C13
德式旋转扣件
German Type Forged Swivel Coupler
48.3mm 1.45kg



PZ-C14
德式一半扣件
German Type Half Coupler
48.3mm 0.7kg



PZ-C15
意式直角扣件
Italian Type Forged Double Coupler
48.3mm 1.65kg



PZ-C16
意式旋转扣件
Italian Type Forged Swivel Coupler
48.3mm 1.68kg



PZ-C17
意式直角扣件
Italian Type Forged Double Coupler
48.3mm 1.25kg



PZ-C18
意式旋转扣件
Italian Type Forged Swivel Coupler
48.3mm 1.5kg



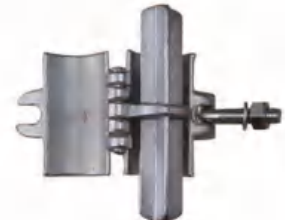
PZ-C19
意式一半扣件
Italian Type Half Coupler
48.3mm 0.85kg



PZ-C20
美式直角扣件
American Type Forged Double Clamp
48.3mm 1.45kg



PZ-C21
美式旋转扣件
American Type Forged Swivel Clamp
48.3mm 1.70kg



PZ-C22
锻压内接扣件
Forged Inner Joint
48.3mm 1.35kg



PZ-C23
英式冲压直角扣件
British Type Pressed Double Clamp
48.3mm 0.8kg



PZ-C24
英式冲压旋转扣件
British Type Pressed Swivel Clamp
48.3mm 1kg



PZ-C25
冲压外接扣件
Pressed Sleeve Coupler
48.3mm 1kg



PZ-C25A
冲压外接扣件
Pressed Sleeve Coupler
48.3mm 1.2kg



PZ-C26
日式冲压直角扣件
JIS Pressed Double Clamp
48.3mm 0.65kg



PZ-C27
日式冲压旋转扣件
JIS Pressed Swivel Clamp
48.3mm 0.65kg



PZ-C28
梯子扣件
Ladder Clamp
0.5kg



PZ-C29
围栏扣件
Fence Coupler
0.41kg



PZ-C30
直角扣件
Double Coupler
48.3x60mm 1.45kg



PZ-C31
旋转扣件
Swivel Coupler
48.3x60mm 1.55kg



PZ-C32
直角扣件
Double Coupler
48.3x89mm 2.60kg
48.3x76mm 2.00kg



PZ-C33
旋转扣件
Swivel Coupler
48.3x89mm 2.6kg
48.3x76mm 2.0kg



PZ-C34
直角扣件
Right Angle Clamp
48.3mm 1.5kg



PZ-C35
旋转扣件
Swivel Clamp
48.3mm 1.6kg



PZ-C36
锻压外接扣件
Forged Sleeve Coupler
48.3mm 1.6kg



PZ-C37
焊插板扣件
Wedge Clamp
1.15kg



PZ-C38
焊接L板扣件
Weld L-Plate Coupler
48.3mm 1.2kg



PZ-C39
焊内接扣件
Weld Inner Joint Coupler
48.3mm 1.5kg



PZ-C40
焊销子扣件
Weld Pin Coupler
48.3mm 0.85kg



PZ-C41
焊螺栓扣件
Weld Bolt Coupler
48.3mm 0.75kg



PZ-C42
圆盘扣件
Round Ring Coupler
48.3mm 1.1kg



PZ-C43
焊接L棒扣件
Weld L-Rod Coupler
48.3mm 1.15kg



PZ-C44
焊铸钢插头扣件
Weld Cast-Steel Ledger End Coupler
48.3mm 1.25kg



PZ-C45
焊接管子扣件
Weld Pipe Coupler
48.3mm 1.55kg



盘型系统
RINGLOCK SYSTEM

PZ-SR01
盘型系列立柱
Ring Lock Vertical
Ø48.3X3.25mm



Size/ mm	Weight/ kg
330mm	2.29kg
500mm	3.2kg
1000mm	5.7kg
1500mm	8.05kg
2000mm	10.5kg
2500mm	12.8kg
3000mm	15.2kg
4000mm	20.2kg



PZ-SR02
盘型系列横杆
Ring Lock Ledger
Ø48.3X3.25mm

Size/ mm	Weight/ kg
732mm	3.45kg
1088mm	4.55kg
1572mm	6.5kg
2072mm	8.2kg
2572mm	9.95kg
3072mm	11.75kg

PZ-SR03
盘型系列斜拉杆
Ring Lock Diagonal
Ø48.3X3.25mm



Size/ mm	Weight/ kg
730x2000/2081mm	7.9kg
1088x2000/2207mm	8.4kg
1572x2000/2451mm	9.3kg
2072x2000/2770mm	10.5kg
2572x2000/3137mm	11.8kg
3072x2000/3537mm	13.4kg



PZ-SR04
盘型系列三角架
Ring Lock Bracket
Ø48.3X3.25mm

Size/ mm	Weight/ kg
400mm	2.78kg
732mm	4.7kg



PZ-SR05
圆盘
Round Ring
Ø122x10mm 0.5kg



PZ-SR06
横杆头
Cast Steel Ledger End
0.55kg



PZ-SR07
斜拉杆头
Cast Steel Diagonal Brace End
0.65kg



碗型系统 CUPLOCK SYSTEM



PZ-SC01
碗型系列立柱
Cup Lock Vertical
Ø48.3X3.25mm
with Spigot

Size/ mm	Weight/ kg
500mm	3.45kg
1000mm	5.58kg
1300mm	7.97kg
1500mm	8.74kg
1800mm	10.6kg
2000mm	11.38kg
2500mm	14kg
3000mm	16.63kg



PZ-SC02
碗型系列横杆
Cup Lock Ledger
Ø48.3X3.25mm

Size/ mm	Weight/ kg
600mm	2.6kg
900mm	3.7kg
1000mm	4.1kg
1200mm	4.8kg
1250mm	5kg
1300mm	5.2kg
1500mm	6kg
1600mm	6.3kg
1800mm	7.1kg
2000mm	7.8kg
2500mm	9.7kg
3000mm	11.6kg



PZ-SC03
碗型系列斜拉杆
Cup Lock Diagonal
Ø48.3X3.25mm

Size/ mm	Weight/ kg
1300x2000mm	9.21kg
1800x2000mm	10.31kg
2500x2000mm	12.16kg



PZ-SC04
碗型系列三角架
Cup Lock Bracket
Ø48.3X3.25mm

Size/ mm	Weight/ kg
565mm	6.6kg
795mm	7.6kg



PZ-SC05
上碗
Top Cup
0.45kg



PZ-SC06
下碗
Bottom Cup
0.22kg



PZ-SC07
横杆头
Ledger Blade
0.23kg



香蕉型系列
KWICKSTAGE SYSTEM



PZ-SK01
香蕉系列立柱
Kwikstage Vertical
Ø48.3X3.25mm

Size/ mm	Weight/ kg
1485mm	2.29kg
1981mm	11.9kg
2476mm	14.7kg
2971mm	15.53kg



PZ-SK02A
香蕉系列横杆
Kwikstage Ledger
Ø48.3X4mm

Size/ mm	Weight/ kg
560mm	3.1kg
762mm	3.8kg
812mm	4kg
1000mm	4.7kg
1270mm	5.7kg
1829mm	7.8kg
2438mm	10kg



PZ-SK02B
香蕉系列角铁横杆
Kwikstage Ledger
(Angle iron)
50X50X5mm

Size/ mm	Weight/ kg
560mm	4.65kg
762mm	6.13kg
812mm	6.7kg
1000mm	8.21kg
1270mm	9.8kg
1829mm	17.2kg
2438mm	23kg



PZ-SK03
香蕉系列斜拉杆
Kwikstage Diagonal
Ø48.3X3.25mm

Size/ mm	Weight/ kg
2476x2438mm	14.5kg
1981x2438mm	13.08kg
1486x2438mm	12.02kg
1981x1829mm	11.5kg
1981x1270mm	10.17kg
1486x1270mm	8.8kg



PZ-SK04
香蕉系列三角架
Bracket

Size/ mm	Weight/ kg
534mm	5.7kg
749mm	8.3kg



STEEL LADDER FRAME

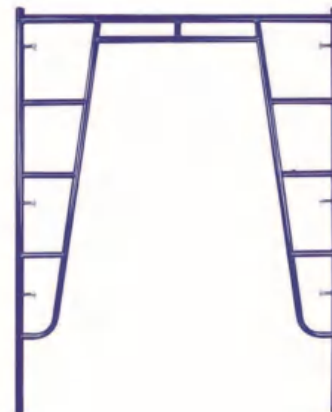


STEEL WALK THROUGH FRAME



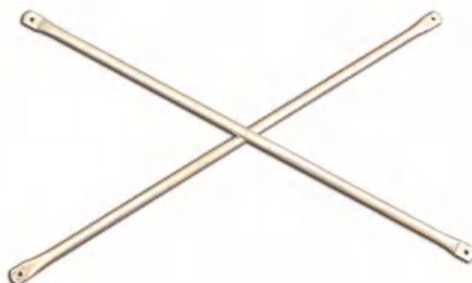
PZ-SL01
梯型门架
Ladder Frame
Ø42X2.3mm

Size/ mm
1219X914mm
914X1930mm
1524X1524mm



PZ-SW01
人行门架
Walk Through Frame
Ø42X2.3mm

Size/ mm
1219X1524mm
1219X1700mm
1219X1930mm

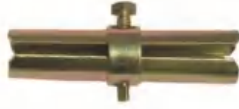


PZ-SC01
斜拉杆
Cross Brace
Ø25X2mm

Size/ mm
1219 x 1524mm
1219 x 2133mm
1219 x 3048mm



PZ-AI01
锻压内接
Forged Coupling Pin
Ø40x300mm 1.1kg



PZ-AI02
冲压内接
Pressed Coupling Pin
Ø40x180mm 0.80kg



PZ-AI03
锻压内接
Forged Coupling Pin
1.08kg



PZ-AI04
管式内接
Pipe Coupling Pin
Ø40x2x200mm 0.65kg



PZ-AI05
冲压内接
Pressed Coupling Pin
Ø40x300mm



PZ-AI06
锻压内接
Forged Coupling Pin
Ø38x200mm



PZ-AI07
十字内接
Double Coupling Pin
40x40x3x200mm 0.50kg



PZ-AI08
旋转锁头
Twist Lock
Ø48/60mm 3.20kg



PZ-AN01
锻造丝杠把手
Forged Jack Nut
0.90kg



PZ-AN02
锻造丝杠把手
Forged Jack Nut
0.70kg



PZ-AN03
锻造丝杠把手
Forged Jack Nut
0.62kg



PZ-AN04
锻造丝杠把手
Forged Jack Nut
1.04kg



PZ-AN05
锻造丝杠把手
Forged Jack Nut
0.58kg



PZ-AN06
锻造丝杠把手
Forged Jack Nut
0.76kg



PZ-AN07
锻造丝杠把手
Forged Jack Nut
0.92kg



PZ-AN08
锻造丝杠把手
Forged Jack Nut
0.50kg



PZ-AJ01
空心调节底座
Pipe Screw Jack Base
Ø34 / Ø38mm



PZ-AJ02
空心调节底座
Pipe Screw Jack Base
Ø34 / Ø38mm



PZ-AJ03
实心调节底座
Solid Screw Jack Base
Ø34mm



PZ-AJ04
U型可调支撑
U-head Screw Jack
Ø34 Ø38mm



PZ-AJ05
焊扣件调节丝杠
Screw Jack with Coupler
Ø34 / Ø38mm



PZ-AJ06
U型头
U head
0.65KG



PZ-AS01
烟斗销
S caffold Hook
0.20kg



PZ-AS02
烟斗销
S caffold Hook
0.29kg



PZ-AS03
烟斗销
S caffold Hook
0.20kg



PZ-AS04
烟斗销
S caffold Hook
0.21kg



PZ-AS05
烟斗销
Scaffold Hook
0.23kg



PZ-AS06
烟斗销
Scaffold Hook
0.33kg



PZ-AP01
踏板
Steel Plank
225x65x1.8mm



PZ-AP02
踏板
Steel Plank
300x65x1.8mm



PZ-AP03
踏板
Steel Plank
320x76x1.5mm



PZ-TS01
建筑扳手
Spanner
21mm 22mm 23mm 24mm



PZ-TS01A
建筑扳手
Spanner
21mm 22mm 23mm 24mm



PZ-TS02
建筑扳手
Ratchet Wrench
17/21mm 19/22mm 19/24mm



PZ-TS02A
建筑扳手
Ratchet Wrench
17/21mm 19/22mm 19/24mm



PZ-TS03
蚯蚓销
Lock Pin
8/9/10/12mm



PZ-TS04
销子
Lock Pin
12mm/14mm/16mm



PZ-TS05
胶轮
Caster Wheel
150mm /200mm



PZ-TS06
胶轮
Caster Wheel
150mm /200mm



PZ-TS07
吊钩
Lifting Hook
1/2" 1kg



PZ-TS08
吊钩
Lifting Hook
3/8" 0.6kg



PZ-TS09
吊钩
Lifting Hook
5/16" 0.37kg



PZ-TS10
吊钩
Lifting Hook
5/16" 0.36kg



PZ-TS11
吊钩
Lifting Hook
1/4" 0.26kg



PZ-TS12
吊钩
Lifting Hook
0.24kg



PZ-TS13
吊钩
Lifting Hook
0.20kg



PZ-TS14
吊钩
Lifting Hook
5/16" 0.22kg

Technological Innovation Global Services



SHANDONG PINZHENG METAL PRODUCTS CO., LTD
100 METERS EAST OF THE INTERSECTION OF FUZHOU ROAD
AND SHANTOU ROAD RIZHAO SHANDONG CHINA
Tel: +86-633-2278586 Fax: +86-633-2278587
Email:sales@pezonmetal.com Web:www.pezonmetal.com