

Impressions of Hangzhou



夏 | summer



春 | spring



秋 | autumn



冬 | winter

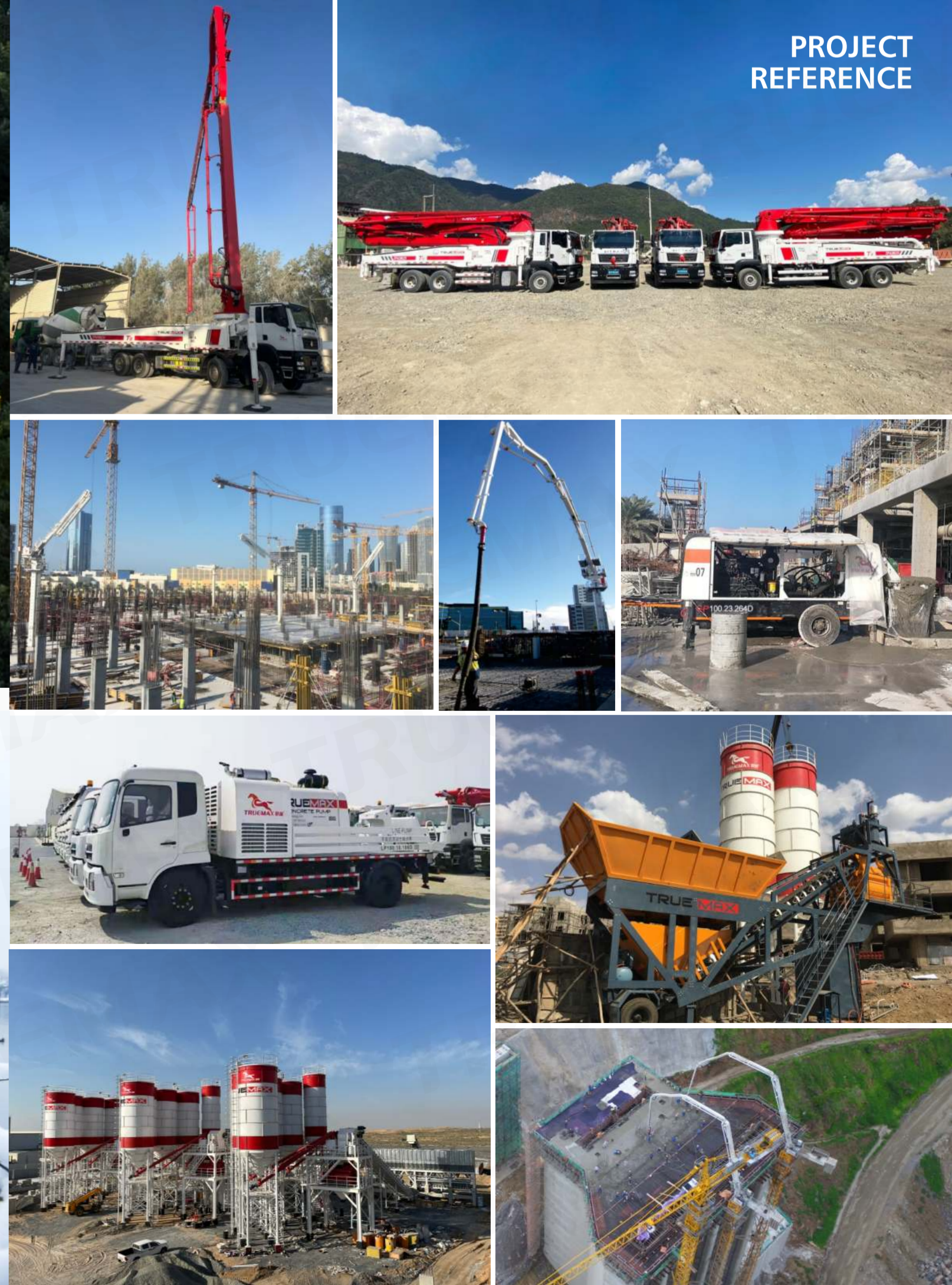
BRPQ24.071000CH&EN&1



产品目录册
PRODUCT CATALOGUE



TRUEMAX GROUP LIMITED 瑞瑞集团
浙江信瑞重工科技有限公司
ZHEJIANG TRUEMAX ENGINEERING CO.,LTD.
杭州信瑞机电设备有限公司
HANGZHOU TRUEMAX MACHINERY & EQUIPMENT CO.,LTD.
Factory Addr: No. 118 Haifeng Road, Jianshan Industrial Development Zone, Haining, China
Tel: 0086-571-85803511 Email: sales@truemax.cn
Website: www.truemax.cn www.truemaeng.com



PROJECT REFERENCE

混凝土设备 CONCRETE MACHINERY

混凝土泵车 TRUCK-MOUNTED BOOM PUMP



| 型号 Model | TP25M4 | TP38RZ5 | TP43RZ5 |
|--|----------------------|-------------------------|-------------------------|
| 臂架最大高度 Vertical Reach | 24.2m | 38m | 43m |
| 理论混凝土排量 Theo. Concrete Output(Low/High) | 100m ³ /h | 150/85m ³ /h | 150/85m ³ /h |



| 型号 Model | TP49RZ6 | TP56RZ6 | TP58RZ6 |
|----------------------------------|--------------------------|--------------------------|----------------------|
| 臂架最大高度 Vertical Reach | 49m | 56m | 57.5m |
| 理论混凝土排量 Theo. Concrete Output | 180/120m ³ /h | 180/120m ³ /h | 170m ³ /h |



| 型号 Model | TP62RZ6 | TP63RZ6 | TP67RZ7 |
|----------------------------------|----------------------|--------------------------|--------------------------|
| 臂架最大高度 Vertical Reach | 61.1m | 62.5m | 66.1m |
| 理论混凝土排量 Theo. Concrete Output | 180m ³ /h | 180/120m ³ /h | 180/120m ³ /h |

拖式混凝土泵送泵 STATIONARY CONCRETE PUMP

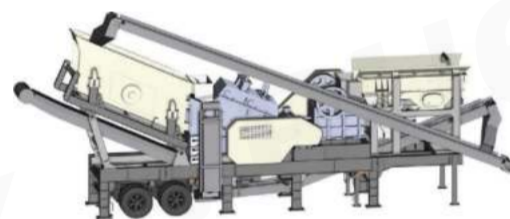


| 型号 Model | SP50.10.60D | SP80.18.186D | SP100.23.264D |
|---|------------------------|------------------------|-------------------------|
| 理论混凝土排量 Theo. Concrete Output(Low/High) | 49/26m ³ /h | 85/50m ³ /h | 100/50m ³ /h |
| 最大混凝土输送压力 Max. Concrete Pressure(Low/High) | 5/10MPa | 10/18MPa | 11.6/23MPa |

破碎设备 CRUSHING MACHINERY

移动成套设备 MOBILE CRUSHING PLANT

- 移动鄂式破碎站 Mobile Jaw Crushing Plant



| 型号 Model | YPE69 | YPE75 | YPE912 |
|---------------------------|-----------|------------|------------|
| 处理能力 Processing Volume | 60-150t/h | 120-320t/h | 210-460t/h |
| 功率 Power | 91.5kW | 134kW | 146kW |

- 移动反击式破碎站 Mobile Counter Impact Crushing Plant



| 型号 Model | 3YPF1548 | 3YPF1848 | 3YPF1860 | 3YPF2160 |
|---------------------------|-----------|---------------|-----------|------------|
| 处理能力 Processing Volume | 50-250t/h | 70-300t/h | 90-400t/h | 120-450t/h |
| 功率 Power | 70.90kW | 128.5-150.5kW | 154-190kW | 210-297kW |

- 移动圆锥式破碎站 Mobile Cone Crushing Plant



| 型号 Model | 3YPY900 | 3YPY1300 | 3YPY1860 | 3YPY2100 |
|---------------------------|-----------|-----------|---------------|---------------|
| 处理能力 Processing Volume | 50-200t/h | 70-300t/h | 120-400t/h | 140-450t/h |
| 功率 Power | 75kW | 99-134kW | 212.5-220.5kW | 257.5-264.5kW |

固定成套设备 STATIONARY CRUSHING PLANT



Customized as per the requirement

车载式混凝土输送泵 TRUCK-MOUNTED LINE PUMP



| 型号 Model | LP50.10.60D | LP100.18.186D |
|---|------------------------|-------------------------|
| 理论混凝土排量 Theo. Concrete Output(Low/High) | 49/26m ³ /h | 100/55m ³ /h |
| 最大混凝土输送压力 Max. Concrete Pressure(Low/High) | 5/10MPa | 9/18MPa |

混凝土搅拌站 CONCRETE BATCHING PLANT

- 固定式搅拌站 Stationary Concrete Batching Plant



| 型号 Model | CBP60S | CBP120S | CBP180S |
|-----------------------------------|---------------------|----------------------|----------------------|
| 理论生产率 Theoretical Productivity | 60m ³ /h | 120m ³ /h | 180m ³ /h |
| 稳定搅拌容量 Mixer Capacity | 1000L | 2000L | 3000L |



| 型号 Model | CBP240S | CBP270S |
|-----------------------------------|----------------------|----------------------|
| 理论生产率 Theoretical Productivity | 240m ³ /h | 270m ³ /h |
| 稳定搅拌容量 Mixer Capacity | 4000L | 4500L |

- 移动式搅拌站 Mobile Concrete Batching Plant



| 型号 Model | CBP60M | CBP100M |
|-----------------------------------|---------------------|----------------------|
| 理论生产率 Theoretical Productivity | 60m ³ /h | 100m ³ /h |
| 稳定搅拌容量 Mixer Capacity | 1000L | 2000L |

混凝土布料机 CONCRETE PLACING BOOM

- 管柱内爬液压布料机 Column Climbing Placing Boom



| 型号 Model | PB28A-3R-II | PB32A-3R-II | PB33A-4R-II |
|------------------------------|-------------|-------------|-------------|
| 最大布料半径 Max. Radius | 27.7m | 31.7m | 32.4m |
| 独立高度 Free Standing Height | 21.3m | 21.3m | 21.3m |

- 船载式液压布料机 Mobile Boat Placing Boom / 模板式液压布料机 Formwork Climbing Placing Boom



| 型号 Model | PB21AM-3R | PB21AM-3R |
|------------------------------|-----------|-----------|
| 最大布料半径 Max. Radius | 21m | 21m |
| 独立高度 Free Standing Height | 4.2m | 4.2m |

- 移动式液压布料机 Concrete Hydraulic Spider



| 型号 Model | PB17B-3R-II | PB21B-3R |
|------------------------------|-------------|----------|
| 最大布料半径 Max. Radius | 17m | 21m |
| 独立高度 Free Standing Height | 2.7m | 3m |

- 车载式液压布料机 Mobile Concrete Hydraulic Spider



| 型号 Model | PB17D-3R |
|------------------------------|----------|
| 最大布料半径 Max. Radius | 17m |
| 独立高度 Free Standing Height | 2.9m |

混凝土布料机 CONCRETE PLACING BOOM

- 塔式液压布料机 Lattice Placing Boom



| 型号 Model | PB38BT-4R-E | PB51AT-4R-E |
|------------------------------|-------------|-------------|
| 最大布料半径 Max. Radius | 38m | 51m |
| 独立高度 Free Standing Height | 40m | 46m |

混凝土搅拌车 CONCRETE TRUCK MIXER



| 型号 Model | CTM3 | CTM6 | CTM8 |
|---------------------|-----------------|-----------------|-----------------|
| 驱动方式 Drive Type | 4×2 | 6×4 | 6×4 |
| 载容 Load Capacity | 3m ³ | 6m ³ | 8m ³ |



| 型号 Model | CTM9 | CTM10 | CTM12 |
|---------------------|-----------------|------------------|------------------|
| 驱动方式 Drive Type | 6×4 | 6×4 | 8×4 |
| 载容 Load Capacity | 9m ³ | 10m ³ | 12m ³ |



| 型号 Model | CTM14 |
|---------------------|------------------|
| 驱动方式 Drive Type | 8×4 |
| 载容 Load Capacity | 14m ³ |

建机设备 CONSTRUCTION MACHINERY

塔式起重机 TOWER CRANE

- 平头塔式起重机 Flat Top Tower Crane



| 型号 Model | TC4010-4 | TC6013-6 | TC6515-8 | TC6513-8 |
|----------------------------|----------|----------|----------|----------|
| 最大载重 Max. Load Capacity | 4t | 6t | 8t | 8t |
| 臂架长度 Top Load | 1.0t@40m | 1.3t@60m | 1.5t@60m | 1.3t@65m |



| 型号 Model | TC6513-10 | TC6515-8 | TC6515-10 | TC7015-10 |
|----------------------------|-----------|----------|-----------|-----------|
| 最大载重 Max. Load Capacity | 10t | 8t | 10t | 10t |
| 臂架长度 Top Load | 1.3t@65m | 1.5t@65m | 1.5t@65m | 1.5t@70m |



| 型号 Model | TC7020-12 | TC7022-12 | TC7527-16 |
|----------------------------|-----------|-----------|-----------|
| 最大载重 Max. Load Capacity | 12t | 12t | 16t |
| 臂架长度 Top Load | 2.0t@70m | 2.2t@70m | 2.7t@75m |

- 尖头塔式起重机 Tipkit Tower Crane



| 型号 Model | TC6013-6/B | TC6513-8/10 | TC6515-8/10 | TC7015-10/12 |
|----------------------------|------------|-------------|-------------|--------------|
| 最大载重 Max. Load Capacity | 6t/8t | 8t/10t | 8t/10t | 10t/12t |
| 臂架长度 Top Load | 1.3t@60m | 1.3t@65m | 1.5t@65m | 1.5t@70m |

升降机 BUILDING HOIST

- 双笼升降机 Double Cage



| 型号 Model | SC200/200TD | SC200/200DV | SC200/200GZ | SC200/200G |
|------------------------|-------------|-------------|-------------|------------|
| 电机功率 Motor Power | 11kW×2 | 13kW×2 | 15kW×2 | 22kW×2 |
| 载重 Lifting Capacity | 2000kg | 2000kg | 2000kg | 2000kg |

- 单笼升降机 Single Cage



| 型号 Model | SC200TD | SC200DV | SC200GZ | SC200G |
|------------------------|---------|---------|---------|--------|
| 电机功率 Motor Power | 11kW×3 | 13kW×2 | 15kW×3 | 22kW×2 |
| 载重 Lifting Capacity | 2000kg | 2000kg | 2000kg | 2000kg |

吊篮 SUSPENSION PLATFORM



| 型号 Model | ZLP630 | ZLP800 | ZLP1000 |
|-------------------------|--------|--------|----------|
| 载重 Lifting Capacity | 630kg | 800kg | 1000kg |
| 平台高度 Platform Length | 6m | 7.5m | 7.5m/10m |

配置参数如有更改,恕不另行通知 Configuration parameters are subject to change without notice