



# COLD DRAWN

AND COLD ROLLED SEAMLESS PRECISION TUBES

冷拔、冷轧精密钢管系列

## 张家港市圣鼎源制管有限公司

地址：中国江苏省张家港市金港镇后腰路高桥工业园B座

邮编：215631

国内销售部：

电话：+86-512-56930188；传真：+86-512-56930905

邮箱：cnsdyzg@163.com

手机：+86-13806229580（陈俞兵）/ +86-13951131688

国际销售部：

电话：+86-512-56720298；传真：+86-512-56720295

邮箱1：sdyzg@sdyzg.net；手机：+86-13218468759（朱海峰）

邮箱2：sdyzg001@sdyzg.net；手机：+86-13862262730（吴敏）

邮箱3：zieglertube@gmail.com；手机：+86-13921987561（陈忠良）

公司网址：www.sdyzg.net

## Zhangjiagang Shengdingyuan Pipe-making Co., Ltd.

ADD: Building B, GaoQiao Industry Park, Chengdong Road, HouCheng

JinGang Town, ZhangJiaGang City, JiangSu Province, China.

Post 215631

Domestic Sales Dept.

Tel +86-512-56930188 Fax +86-512-56930905

E-mail: cnsdyzg@163.com

Mobile: +86-13806229580 (Yubin Chen) / +86-13951131688

International marketing Dept.

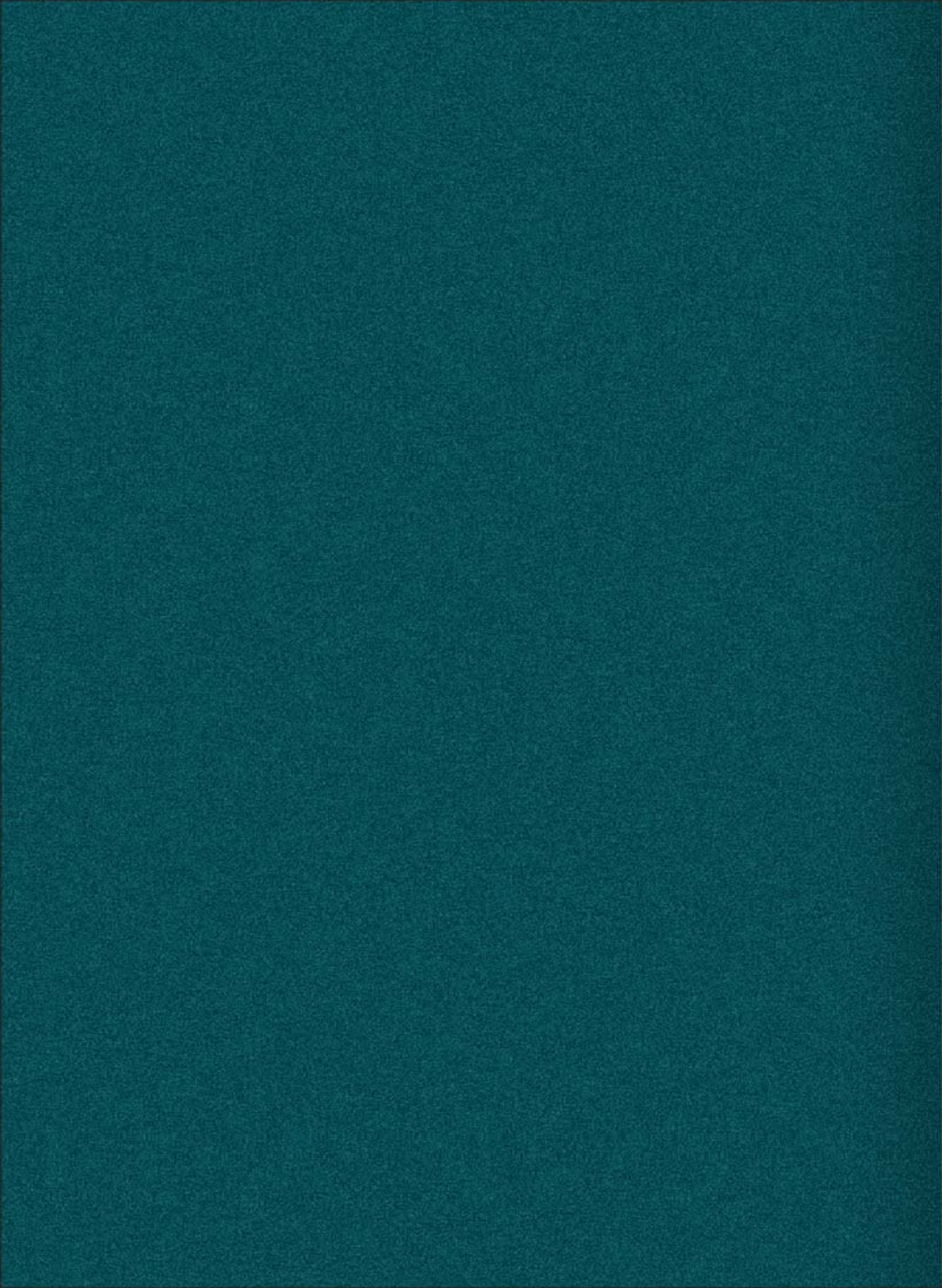
Tel +86-512-56720298 Fax +86-512-56720295

1.E-mail: sdyzg@sdyzg.net, Mobile: +86-13218468759 (Brian Chu)

2.E-mail: sdyzg001@sdyzg.net, Mobile: +86-13862262730 (Sunny Wu)

3.E-mail: ziegler tube@gmail.com, Mobile: +86-13921987561 (Ziegler Chen)

Web: <http://www.sdyzg.net>



引领国际市场 打造世界精品

LEADS INTERNATIONAL MARKET  
AND PRODUCES WORLD CLASS GOODS

風雨兼程 | 豪情萬丈

HISTORY SEES RESPLENDENCE;  
SCIENCE & TECHNOLOGY CREATES THE FUTURE.



总经理：陈惠明  
General manager: HuiMing Chen

多年来，圣鼎源一直致力于创新，努力用高质量的产品满足客户的多样化需求。多年来，不断创新的生产技术和各位员工的积极努力使圣鼎源成为冷轧精密无缝钢管的专家。在原材料供应、管材制造等级、壁厚范围、内径尺寸的控制等方面圣鼎源都具有世界领先的优势，产品已广泛用于汽车、液压、工程机械、电器电热制冷等行业，使世界各地的人们在使用过程中得到安全、信任和使用的愉悦感，公司也由此获得了各个领域的广泛认同。现在，作为企业的象征，这种求新、创新的力量和愿望比以往任何时候都强烈，公司也将激情满怀的在多样化的国际市场竞争中继续前进。

ZHANG JIA GANG SHENG DING YUAN PIPE-MAKING CO., LTD (hereinafter referred to as SHENG DING YUAN), has devoted to innovation and exerted itself to high-quality products to meet the customers' diversified demands for years. It is this combination of ever-changing technologies and unremitting efforts that has built SHENG DING YUAN as the expert in producing cold-drawn precision seamless steel tubes. SHENG DING YUAN takes the lead in raw material supply and control of the grade of tube production, the scope of radial thickness, the size of internal diameter around the globe. Its products are widely used in automobile, hydraulic pressure, engineering machinery, refrigeration for electric appliance and electric heating system, by which people in the world have achieved reliable, confident and pleasing service, and SHENG DING YUAN has also won a worldwide reputation in all fields. At present, our efforts and desire of innovation, which is also our company's philosophy, are as strong as ever. As a result, SHENG DING YUAN will continue the advance in competitions in international diversified markets with great enthusiasm.



## 管业之星 闪耀江南

张家港市圣鼎源制管有限公司，位于全国唯一的内陆河—长江下游，张家港保税区东侧。公司北靠长江黄金水道的张家港港，傍依全国第三大国际木材、集装箱货运集散港口。交通出行5公里即可上沿江高速公路，地理位置优越，水陆空运输通道快捷便利。

公司占地面积8000多平方米，员工100余人，总资产已超过4000万元。公司产品主要有：冷拔或冷轧精密无缝钢管及相关的配套光亮油管、输送流体用无缝钢管，规格齐全，年产量达8000余吨。本公司专业技术人员占员工总人数25%，技术力量雄厚、生产工艺先进、各项检测手段齐全。产品长期定点供应上海大众、东风汽车、常柴集团、徐州重工等国内数十家大中型企业，外贸出口印度、巴基斯坦、加拿大、意大利等欧美发达国家的汽车、工程车辆生产企业。产品广泛用于发动机热交换器、汽车、柴油机、工程车辆、化工机械、电器电热制冷设备等行业。公司贯彻：“质量是生命、顾客为上帝”的市场原则，产品必须要依据质量第一，满足不同要求的客户为目的，生产精度更高、品种更齐全的产品奉献给海内外广大客户。

**公司业务范围：**冷拔或冷轧精密无缝钢管及相关的配套光亮油管、输送流体用无缝钢管。

**公司产品适用范围：**汽车、工程车辆、柴油机、化工机械、电器电热制冷设备。

**各种管材等级：**碳钢、合金和特种钢全部来自上海宝钢、兴澄等国际著名钢铁企业。

**值得骄傲的研发实力：**聘请国内外著名科研单位的专家为未来的各项产品和工程进行不断的研发。

**遍布全球的服务网络：**方便及时的解决客户所需。

## TUBE STAR SHINE BRIGHTLY IN SOUTHEAST CHINA

Zhangjiagang City Shengdingyuan Pipe-making Co.,Ltd is located to the east of Zhangjiagang Free Trade Zone, Situated in the lower reaches of the Yangtze River, the sole continental river of the country, with Zhangjiagang Port of the Yangtze River golden waterway within easy reach in the north and adjacent to the third largest nationwide timber and container freight& distributing port. With the entrance/exit of Yanjiang Expressway being 5km away. The company enjoys advantageous geographical location and fast & convenient water, land and air transportation.

The company covers a land area of 8000 m<sup>2</sup>, has more than 100 staff members and possesses a total asset of over RMB40 million. The company's major products involve cold-drawn or cold-rolled seamless precision steel pipes and relevant bright hydraulic pipes and fluid-transporting seamless steel pipes, with the annual output exceeding 8000 tons. With the specialized technical personnel accounting for 25% of the total staff members, the company has a sound technical strength as well as advanced technological process and complete mechanics lab and eddy-current NDT facilities. The products are directly supplied, on a long-term basis, to dozens of domestic large and medium enterprises such as Shanghai Volkswagen, Dongfeng Auto, Changzhou Diesel Engine Group, Xuzhou Heavy Industry, etc, and are also exported to the automobile and engineering vehicle manufacturers in India, Pakistan, Canada, Italy and other European and American countries. The products have found wide applications in such industries as automobile, diesel, engineering vehicle, chemical machinery, electrical appliance and electric heating & refrigerating equipment. The company implements the market tenet of "Quality is lifeline; customers is the God", takes product quality into first consideration, aims at satisfying customers' different requirements and providing its domestic and overseas customers with better products of more varieties.

**Business scope:** Cold-drawn or cold-rolled precision seamless steel tubes, related bright tube and seamless steel pipe for fluid conveyance.

**Scope of product application:** automobile, engineering vehicles, diesel, chemical engineering machinery, refrigerating equipments for electric appliance and electric heating system.

**Steel grades:** Carbon steel, alloy and special steel, all produced by such well-known steel corporations as Shanghai BAOSTEEL Group and XINGCHENG steel.

**High quality research and technology:** SHENG DING YUAN has attracted specialists from famous research units at home and abroad for researching and developing a variety of products and engineering.

**Service network across the globe:** convenient and prompt solution for your need.



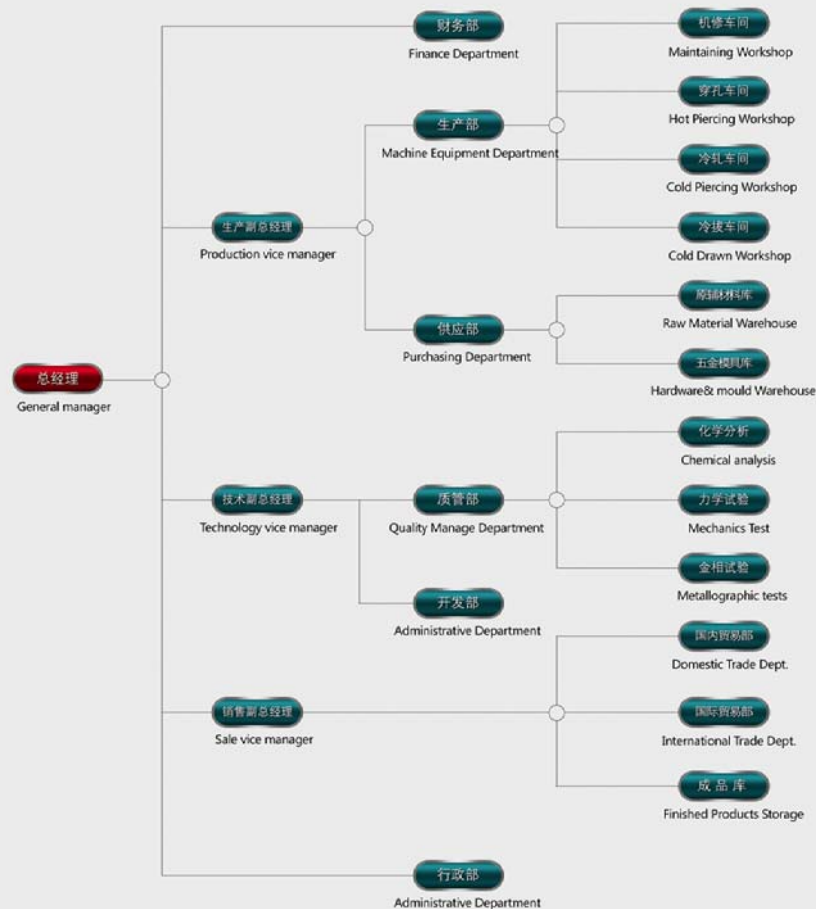


### 众志成城 和谐灵动

一支优秀而高效的团队是企业可持续发展的不竭动力；  
 一支灵动而高效的组织机构是企业保持良性运转的重要支柱。  
 锐意进取的圣鼎源人深知只有凝聚企业员工的集体智慧，众志成城才能应对不断变化的市场环境，才能给企业带来持续向上的朝气和蓬勃的生命力。凝聚产生力量，团结诞生兴旺。全心全意，精诚合作的圣鼎源人正以其独特的凝聚力克服企业发展中的困难，成就企业的腾飞。

### UNITY IS STRENGTH, HARMONY FOSTERS INNOVATION

An excellent and high-performance work group is an inexhaustible motive force for sustainable development ;  
 An active and high-performance organization is also the cornerstone for sound operation. People of SHENG DING YUAN are forging ahead with enthusiasm, and know to their cost that until the company concentrates the wisdom and strength of all employees' on confrontation with varying market environment, SHENG DING YUAN will not be full of youthful spirits and healthy vitality. Unity is power, unity foretells prosperity. People of SHENG DING YUAN, upholding the spirit of one heart and one mind, sincere cooperation, are working together to overcome all difficulties in enterprise development, and have executed the corporation's liftoff.





人工检测  
Manpower testing

专业检测 成就完美  
PROFESSIONAL TESTING  
MAKING PERFECTION



涡流探伤机  
Eddy Current  
Testing machine

表面光洁度检测仪  
Surface finish  
testing instrument



拉力试验机  
Pulling force  
testing machine



## 开拓创新 持之以恒

生产工艺流程图：

管坯→酸洗风铲→剪断→加热→热穿孔→打头→酸洗润滑→精密冷轧→精密冷拔→热处理→理化试验→矫直→切头尾→表面及尺寸检验→涡流探伤→水压试验→超声波探伤→镀油→包装→成品库。

1. 酸洗过程采取特殊工艺，对容易形成的折叠裂纹有特殊的处理技巧；
2. 各工序严谨有序，特别是退火处理要求极其严格；
3. 我公司的润滑使用国际先进的处理工艺，对产品的表面质量进行严格控制，防止表面裂纹的产生。

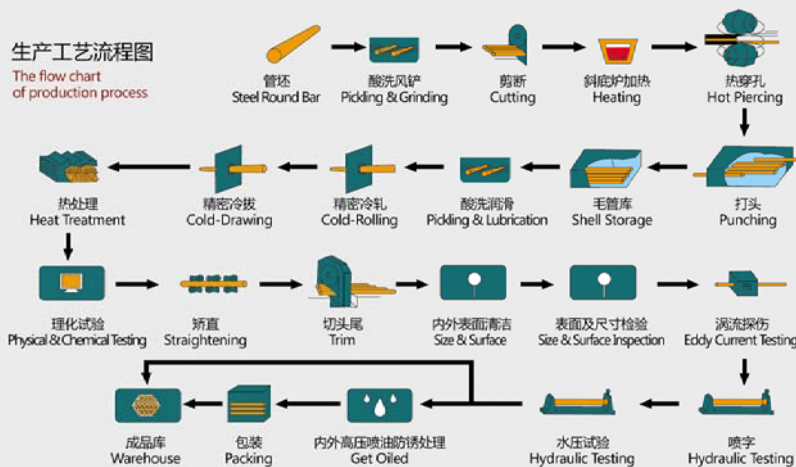
## BLAZE A NEW TRAIL IN A PERSISTENT WAY

Steel Round Bar—Pickling&Grinding—Cutting—Heating—Hot Piercing—Punching—Shell Storage—Pickling&Lubrication—Cold Rolling—Cold Drawing—Heat Treatment—Physical&Chemical Testing—Straightening—Trim—Size&Surface Inspection—Eddy Current Testing—Hydraulic Testing—Supersonic Testing—Get Oiled—Packing—Warehouse.

- 1). We adopt special techniques and special skill in the acid cleaning process to deal with the place where it's easy to form fold crevice;
- 2). Well organized process, especially annealing treatment in a severely technical manner;
- 3). In respect with lubrication, we adopt the brand-new treating process in the world, and put the surface quality of our products under strict control in order to prevent causing surface crack.

### 生产工艺流程图

The flow chart  
of production process



## 精拔光亮管系列

### 1、DIN高精度精拔光亮精密无缝钢管

**工艺简介：**优质碳钢、精拔、无氧化光亮热处理（NBK状态）、无损检测、钢管内壁以专用设备刷洗并经过高压冲洗、钢管上防锈油作防锈处理、两端封盖作防尘处理。

**主要特点：**精度高、光洁度好，热处理后钢管内外壁无氧化层，内壁清洁度好，钢管承受高压，冷弯不变形，扩口、压扁无裂缝，能作各种复杂变形及机械加工处理。钢管颜色为浅灰带白。

**主要用途：**液压系统用钢管，汽车用钢管，其它对钢管精度、光洁度、清洁度、机械性能有很高要求的领域。

## COLD DRAWN SEAMLESS STEEL TUBE(POLISHED)

### 1、DIN Cold Drawn Seamless Tube in High Precision

**Synopsis of Process Routing:** quality carbon steel — cold drawn — heat treatment without oxidation (NBK status) — non-destructive testing. In the wall honing and inside flushing under the high pressure — Antirust oiling outside surface — plastic capping on both ends

**Main Features:** high precision, excellent brightness, no oxidation on the outer and inner walls after heat treatment, high cleanness of inside wall. The steel tube is able to withstand high pressure. No deformation after cold bending, no crack after flaring and flattening. The complicated geometrical forming and machining can be realized. Color of tube: gray with white.

**Main Application:** to be used in hydraulic system, automobile and in the occasion where the high precision, brightness, cleanness and mechanical properties of the tube are required.



液压和气动缸筒用精密内径无缝钢管  
Precision steel tube for hydraulic and pneumatic cylinder



热交换器和冷凝器用钢管  
Seamless steel tube for Heat-Exchanger and Condenser



### 2、DIN高精度黑色磷化精密液压钢管

**工艺简介：**以精拔光亮无缝钢管的成品管作为磷化用钢管，用进口环保型磷化液对钢管进行内外壁磷化，形成黑色磷化保护膜，通过磷化膜中的微孔吸收防锈油作防锈处理，两端封盖作防尘处理。

**主要特点：**钢管颜色为黑中带亮，钢管表面颜色均匀度高，一致性强，外表较为美观，钢管防锈性能好。

**主要用途：**液压系统用钢管，卡套式接头（钢管接头）配套用。

### 2、DIN Black Phosphated Hydraulic Tube in High Precision

**Synopsis of Process Routing:** Cold drawn and bright seamless steel tube is used as the tube to be phosphated. The phosphated is realized with the imported chemical fluid to form a black film. The antirust oil is absorbed by means of the micro pore on the film to prevent from the rust. The caps are covered at two ends of tube to prevent from the dust.

**Main Features:** color of steel tube: bright black. Color is homogeneously distributed on the tube surface. The tube has good property of antirust.

**Main Application:** used in hydraulic system, nested card connector (pipe joints) with matching.

## 精轧光亮管系列

DIN高精度精轧光亮精密无缝钢管

**工艺简介：**优质碳钢，精轧，无氧化光亮热处理（NBK状态）、无损检测、钢管内壁以专用设备刷洗并经过高压冲洗、钢管上防锈油作防锈处理、两端封盖作防尘处理。

**主要特点：**钢管内外壁高精度、高光洁度，热处理后钢管无氧化层，内壁清洁度高，钢管承受高压，冷弯不变形，扩口、压扁无裂缝，能作各种复杂变形及机械加工处理。钢管颜色为白中带亮，具有较高金属光泽。

**主要用途：**汽车用钢管、对钢管的精度和光洁度有很高要求的用户。

## COLD ROLLED SEAMLESS STEEL TUBE(POLISHED)

DIN Cold Rolled and polished Seamless Steel Tube in High Precision

**Synopsis of Process Routing:** quality carbon steel — cold rolling — heat treatment without oxidation (NBK status) — non-destructive testing. In the wall honing and inside flushing under the high pressure — Antirust oiling outside surface — plastic capping on both ends.

**Main Features:** inner and outer walls of tube are in high precision, excellent brightness, no oxidation after heat treatment, and high cleanliness inside tube. The steel tube is able to withstand high pressure. No deformation after cold bending, no crack after flaring and flattening. The complicated geometrical forming and machining can be realized. Color of tube: bright white.

**Main Application:** used in automotive industry, and in the occasion where the high accuracy, brightness, cleanliness of the tube are required.

**主要材料及机械性能：**

本公司采用原材料主要为上海宝钢产St35、St37.4(10#)、S45(20#)、St55(35#)、Ck45(45#)、St52(16Mn)等。

本公司生产的钢管机械性能、工艺性能均极佳，钢管能承受高压、冲击，特别适合液压机械和汽配行业。钢管能进行任何角度的冷弯变形，扩口、压扁无裂缝，适合与需要各种弯曲变形加工的行业。

**表面质量：**钢管内、外表面清洁、无氧化层、无裂缝、折叠、轧折、结疤、离层、发纹。

钢管具有与所使用的制造方法及热处理方法相对应的内外表面状态（如划痕、凸起、凹槽），但其深度不超过0.025mm（此要求高于DIN2391的标准）。

钢管防腐包装及运输：钢管涂防锈油、两端塑封、内层塑料薄膜、外层麻布或木箱包装。

注：钢管开具质量证明书。

**Main material & Mechanical property:**

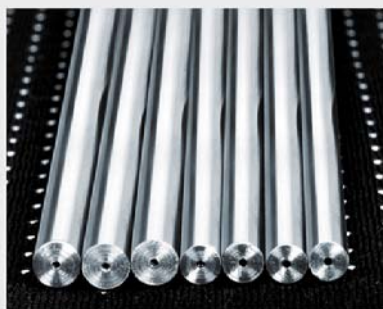
The steel grades of raw material used in our company are mainly St35、St37.4(10#)、S45(20#)、St55(35#)、Ck45(45#)、St52(16Mn) etc. produced by Shanghai Baosteel Group.

The steel tube produced by our company has excellent mechanical property and performance in process. The steel tube is able to withstand the high pressure, impact and particularly suitable for application of hydraulic machinery and automotive fabrication. The tube can be cold bent at any angle. No crack will occur after flaring and flattening for the industry, which the bending and forming is required in process.

**Surface quality:** The internal and external surfaces of tube must be clean without any oxidation, crack, fold, rolling fold, scar and laminar defect. The status of inner and outer surfaces is the same as that of the process and heat treatment, but the depth of defects (e.g. scratch mark, bulge and concavity) is not allowed to exceed 0.025mm (such requirement is stricter than DIN2391 standard).

**Packing against corrosion and transportation of tube:** The steel tube was painted with antirust oil, covered with caps at two ends, packed with plastic film and linen or wooden case.

**Note:** Certificate of Quality Assurance of tube will be presented.



冷拔/轧精密钢管系列  
Cold drawn and cold rolled seamless precision tubes



轿车专用无缝钢管  
Seamless steel tube for automotive industry





**冷拔、冷轧钢管常备规格供货表**  
TABLE OF USUAL DIMENSIONS FOR COLD  
DRAWN/ROLLED STEEL TUBE IN STOCK

规格 Specification		规格 Specification		规格 Specification		规格 Specification		规格 Specification		规格 Specification	
外径 Out diameter	壁厚 Wall thickness	外径 Out diameter	壁厚 Wall thickness	外径 Out diameter	壁厚 Wall thickness	外径 Out diameter	壁厚 Wall thickness	外径 Out diameter	壁厚 Wall thickness	外径 Out diameter	壁厚 Wall thickness
4	0.5	7	2.75	12	3.0	16	5.0	22	1.0	28	1.5
	1.0		2.9		4.0		6.0		1.5		2.0
5	1.0		3.0		5.0		1.0		2.0		2.5
6	0.5	8	1.0	14	1.0	18	1.5	22	2.5	28	3.0
	1.0		1.5		1.5		2.0		3.0		3.5
	1.5		2.0		2.0		2.5		3.5		4.0
	2.0		2.3		2.5		3.0		4.0		5.0
	2.1		2.5		3.0		4.0		5.0		6.0
	2.2		3.0		4.0		5.0		6.0		8.0
	2.25	9	1.5	15	5.0	19	6.0	24	2.0	30	1.0
	2.4		2.0		1.0		1.0		1.0		1.5
2.5	2.5		1.5		2.0		2.0		2.0		
6.35	0.7	10	3.0	15	2.0	19	3.0	25	2.5	30	2.5
	1.0		3.5		2.5		4.0		3.0		3.0
	1.5		1.0		3.0		5.0		4.0		3.5
	1.75		1.5		4.0		6.0		5.0		4.0
	2.2		2.0		5.0		1.5		6.0		5.0
	2.4		3.0		6.0		2.0		1.0		6.0
7	2.6	12	3.5	16	1.0	20	2.5	27	2.0	32	8.0
	0.7		4.0		1.5		3.0		3.0		1.5
	1.0		1.0		2.0		3.5		3.5		2.0
	1.5		1.5		2.5		4.0		4.0		2.5
	2.0		2.0		3.0		5.0		5.0		3.0
	2.5		2.5		4.0		6.0		6.0		转14页

**冷拔、冷轧钢管常备规格供货表**  
TABLE OF USUAL DIMENSIONS FOR COLD  
DRAWN/ROLLED STEEL TUBE IN STOCK

规格 Specification		规格 Specification		规格 Specification		规格 Specification		规格 Specification		规格 Specification	
外径 Out diameter	壁厚 Wall thickness	外径 Out diameter	壁厚 Wall thickness	外径 Out diameter	壁厚 Wall thickness	外径 Out diameter	壁厚 Wall thickness	外径 Out diameter	壁厚 Wall thickness	外径 Out diameter	壁厚 Wall thickness
32	4.0	34	4.0	35	5.0	38	7.0	42	3.5	48	2.5
	5.0		4.5		6.5		1.5		4.0		3.0
	6.0		5.0		1.5		2.0		4.5		3.5
	7.0		6.0		2.0		2.5		5.0		4.0
34	8.0	35	1.5	38	2.5	40	3.0	45	6.0	50	5.0
	1.0		2.0		3.0		4.0		2.0		6.0
	1.5		2.5		3.5		5.0		2.5		5.0
	2.0		3.0		4.0		6.0		3.0		6.0
	2.5	38	3.5	42	4.5	45	1.5	50	4.0	60	3.0
	3.0		4.0		5.0		2.0		5.0		
	3.5		4.5		6.0		3.0		6.0		

(\*备注) 规格外径: 外径mm×壁厚mm; 钢管标准: DIN2391-94/C、GB、DIN; 牌号: st35、st37.4、st52; 长度: 可根据客户需求订做尺寸; 交货状态: NBK。 (Remarks) Specification: OD(mm)\*WT(mm); Standard: DIN2391-94/C、GB、DIN; Size can be customized according to customer; Delivery condition: NBK.

**钢管尺寸公差对照表 TOLERANCE TABLE OF STEEL TUBE**

名称(NAME)	范围(Scope)mm	GB系列(GB Series)mm	DIN系列(DIN series)mm	企业内控标准mm Enterprise internal control standardmm	特殊精度(Special high-precision)mm
外径D Out diameter	4-30	±0.10	±0.08	±0.05	±0.03
	31-40	±0.15	±0.15	±0.05	±0.03
	41-50	±0.20	±0.20	±0.08	±0.03
	51-60	±0.25	±0.25	±0.08	±0.03
壁厚 Wall thickness	0-7	±10%; 最小值(MIN)±0.12	±10%	±10%; 最小值(MIN)±0.05	±10%; 最小值(MIN)±0.03

说明: 关于钢管的机械性能和内径的尺寸公差, 请上网 (<http://www.sdyzg.net>) 查询。  
Note: Regarding mechanical property and tolerance of inner diameter, please inquiry from <http://www.sdyzg.net>.

## 生产标准 PRODUCTION STANDARDS

### 执行中国标准产品 CHINESE STANDARDS

产品名称 Product Name	执行标准 Executive standard	规格范围 Specification Range	钢种/钢级 Steel Kind / Steel Grade
柴油机用高压无缝钢管 Seamless steel pipe for high pressure Diesel	3093-2002	∅ 4~76 x 0.5~8	10、20、Q345
冷拔或冷轧精密无缝钢管 Cold drawn and cold rolled seamless precision tube	3639-2000	∅ 4~76 x 0.5~8	10、20、35、45
液压和气动缸筒用精密内径无缝钢管 Precision inside Diameter Steel Tube for Hydraulic and Pneumatic Cylinder	GB/T8713-1988	∅ 4~76 x 0.5~8	10、20、35、45
结构用无缝钢管 Seamless steel tubes for structural	GB/T8162-1999	∅ 4~76 x 0.5~8	碳素结构钢、合金结构钢 Carbon constructional steel, Alloy constructional steel
输送液体用无缝钢管 Seamless steel tubes for liquid Transport	GB/T8163-1999	∅ 4~76 x 0.5~8	10、20、09MnV、16Mn
压燃式发动机高压油管 High-pressure Seamless Steel tubes for Chemical Fertilizer Industry	ISO8535	∅ 6~10 x 1~4	st35.4、st37.4、st52.4
轿车专用无缝钢管 Seamless steel tubes for automotive industry	Q/HC001-1998	∅ 4~76 x 0.5~8	10、20、45、20Mn、15CrMo



光亮精密机械管  
Polished precision tube for machinery



高压油管  
High pressure fuel tube

## 生产标准 PRODUCTION STANDARDS

### 执行德国标准产品 GERMAN STANDARDS

产品名称 Product Name	执行标准 Executive standard	规格范围 Specification Range	钢种/钢级 Steel Kind / Steel Grade
耐热钢铁无缝钢管 Seamless steel tube for Elevated Temperature	DIN17175	∅ 4~76 x 0.5~8	St35.8、St45.8、17Mn4、19Mn5、15Mo3、13CrMo44
冷拔或冷轧精密无缝钢管 Cold drawn and cold rolled seamless precision tube	DIN2391	∅ 4~76 x 0.5~8	St35、St45、St52
结构用无缝钢管 Seamless steel pipe for structural purpose	DIN2393	∅ 4~76 x 0.5~8	RSt34-2、RSt37-2、RSt44-2、RSt52
无缝钢管 Seamless Steel Tube	DIN2448/1629/1630	∅ 4~76 x 0.5~8	St37/St37.4、St44/St44.4、St52/St52.4

### 执行欧洲标准产品 EUROPEAN STANDARDS

产品名称 Product Name	执行标准 Executive standard	规格范围 Specification Range	钢种/钢级 Steel Kind / Steel Grade
精密无缝钢管 Seamless steel tube for Elevated Temperature	EN10305-1	∅ 4~76 x 0.5~8	E215、E235、E355
输送液体用无缝钢管 Seamless steel tube for liquid service	EN10216	∅ 4~76 x 0.5~8	P195TR1、P195TR2、P235TR1、P235TR2、P265TR1、P265TR2



无氧化退火炉  
Non-oxidation bright anneal furnace



矫直机  
Straightening machine



01



02



03



**SHENG  
DING YUAN**

ZHANGJIAGANG SHENGDINGYUAN PIPE-MAKING CO.,LTD.



04

- 01.LD40精轧机 LD40 finishing mills      02.成品防锈油设备 Antirust Oiling Equipment  
03.轧头机 Punching machines      04.钢管内外表面清洗设备 Inner and Outer Surface Cleaning Equipment  
05.冷拔车 Cold-drawing machines

**成品防锈油设备**

我们用高压喷镀方法，防锈油经过十道过滤，一道沉淀后用高压枪喷镀，保证了钢管内外表面清洁光亮。

**钢管内外表面清洗设备**

我们的钢管经自动内孔清洗机清洗，旋转式毛刷清洗和高压油冲洗内孔和外表面。这个钢管生产的新工艺有效的去除粘附在钢管内孔和表面的一切颗粒物，得到了钢管内外表面清洁光亮无比的效果。

**Inner and Outer Surface Cleaning Equipment**

We adopt high pressure spray plating method, the antirust oil is plated by high pressure water jet after ten passes of filtering and one pass of precipitation in order to safeguard the tubes' outer and inner surface cleanliness and polishness.

**Main Features:**

We adopt automatic inner surface cleaning machine, rotating brush and high pressure oil to clean the inner and outer surface. The new steel tube production craftsmanship can effectively remove all particulate attached to the inner and outer surface of tubes and thus achieve the utmost surface cleanliness and polishness.



05

### 材料对比表 COMPARATIVE TABLE OF MATERIAL

服役温度 Serving temperature	美国 America					德国 German	欧洲 Europe	日本 Japan		
	ASTM / ASME					DIN	p' EN	JIS		
	A / SA 106	A / SA 192	A / SA 209	A / SA 210	A / SA 213 A / SA 335	17 175 VdTUV material data sheet	10216-2	3461 3462	3456 3458	
300°C 580°F	Gr. A	lowcarbon				St35.8		195GH	STB340	STPT370
	Gr. B				Gr. A1	St45.8		235GH	STB410	STPT410
	Gr. C				Gr. C	17Mn4		265GH	STB510	STPT480
						19Mn5		20MnNb6		
						15Mo3		16Mo3		
				T1 / T1A		P1	16Mo5	8MoB5-4	STBA12	STPA12
						CC 15Ni0.65CuMoCb	15NiCuMoNb5 (WB 36)	15NiCuMoNb5-6-4		
						T2 / P2			STBA20	STPA20
						T11 / P11		10CrMo5-5	STBA23	STPA23
						T12 / P12	13CrMo4 4	13CrMo4-5	STBA22	STPA22
						T22 / P22	10CrMo9-10	10CrMo9-10	STBA24	STPA24
						Draft T24	7CrMoVT810-10			
						T23 CC P23				
						14MoV6-3	14MoV6-3			
					T9 / P9	X12CrMo9-1	X11CrMo9-1	STBA26	STPA26	
					T91 / P91	X10CrMoNb9-1	X10CrMoNb9-1			
						X20CrMoV12-1	X20CrMoV11-1			
600°C 1110°F					CC T911 CCP911		X11CrMoWVNb 911(E911)			
					T92 / P92					

\*可根据客户的要求按照其他国家材料标准生产。

\* According to the requirements of customers in accordance with the standards of production in other countries.



### 品牌经营 值得信赖

目前圣鼎源拥有国内领先的生产线和整套的质量保证体系及检测设备。公司已分别于2006年和2007年通过ISO9000-2000国际质量管理体系认证，同时根据ISO/TS16949：2002标准实施全面的产品质量管理。公司拥有专职研发设计人员，并设有标准的化验检测中心，使原有的生产工艺得到不断优化和持续改进，产品质量稳步提高，市场不断拓宽。

我们的质量方针是：顾客至上，系统管理，优质高效，持续改进。

### RELIABLE BRAND MANAGEMENT

At the present time, SHENG DING YUAN is equipped with the leading product line in China, and boasts of its quality guarantee system and testing equipment in a complete set. Our corporation's products have been certified by ISO9000-2000 standard, the international quality management system, in 2006 and 2007 separately. Meanwhile, we have managed production quality in an all-round way, in alignment with ISO/TS16949:2002 standard. Our corporation has a professional team engaging in research, development and design, as well as a standard laboratory and testing center. Thanks to it, our production technologies have been continually optimized and improved, product quality steadily increased and market incessantly extended.

Our quality policy : Guest comes first and systematic management, high quality and efficiency, eternal improvement.

## 走向世界的品牌

圣鼎源是管业市场的勤奋耕耘者，是管业生产标准的参与制定者，是管业用户值得信赖者。

在本地经营过程中圣鼎源始终坚持整合营销传播的理念，强调在生产销售各个环节的成本效应和品牌效应，并与国内外多家著名公司联手，形成更为合理的物流流。现在公司正逐渐拓展国际市场，管类产品已遍布全国并远销美国、俄罗斯、澳大利亚、新加坡、新西兰、中东等十几个国家和地区，受到用户的一致好评。

## GLOBAL BRAND

SHENG DING YUAN, the assiduous cultivator in the tube market, the policy-maker of production standard in tube industry, the relifer for all consumers of tube industry. To build up channels of materials circulation, SHENG DING YUAN, in the process of localization, has upheld the Integral Marketing and Communications logo forever, paid close attention on cost-effectiveness and brand effectiveness, and established association with several notable corporations. At present, our corporation has launched a new campaign to extend the international market; our pipe products covers a dozen of countries and regions, including China, America, Russia, Australia, Singapore, New Zealand, Middle East, and have won good reputation among customers around the world.



海纳百川 | 有容乃大


HISTORY SEES RESPLENDECE;  
SCIENCE & TECHNOLOGY CREATES THE FUTURE.








**COLD DRAWN**  
AND COLD ROLLED SEAMLESS PRECISION TUBES  
冷拔、冷轧精密钢管系列

  
**COLD DRAWN**  
AND COLD ROLLED SEAMLESS PRECISION TUBES  
冷拔、冷轧精密钢管系列

  
**COLD DRAWN**  
AND COLD ROLLED SEAMLESS PRECISION TUBES  
冷拔、冷轧精密钢管系列