



捷泰豪力  
JIETAIHAOLI



## 专业旋挖钻机配件制造商

Professional Manufacturer of Hydraulic Piling Rig Spares

### 生产商Producer:

山东捷泰豪力机械设备有限公司

SHANDONG JIETAIHAOLI MACHINERY EQUIPMENT CO.,LTD

地址: 山东省潍坊市寿光市化龙镇南柴工业园

Nanchai Industrial Zone, Hualong Town, Shouguang Weifang City, Shandong, China

电话/TEL: 0536-5898001

邮编: 262735

网址/ Web: [www.chinajthl.com](http://www.chinajthl.com)

<http://chinajthl.en.alibaba.com>

<http://www.chinakellybar.net>

### 销售商Sellers:

北京捷泰豪力科技发展有限公司

BEIJING JIETAIHAOLI TECHNOLOGY DEVELOPMENT CO.,LTD

北京捷泰鸿力科技有限公司

BEIJING JIETAIHONGLI TECHNOLOGY CO.,LTD

地址: 北京市大兴区亦庄荣华鑫泰大厦3-1903#

3-1903, Ronghua Xintai International Building, Yizhuang Beijing, China

电话/TEL: 86-10-87617688



捷泰豪力产品合集  
JIETAIHAOLI PRODUCTS COLLECTION



捷泰豪力  
JIETAI HAOLI

诚信 开拓 创新 务实



# 目录 CONTENTS

<b>旋挖钻杆</b>	
<b>Kelly Bar</b>	<b>3</b>
复合式&全锁扣钻杆	5
Combined&Full Interlocking Kelly Bar	5
机锁式加压钻杆	7
Interlocking Kelly Bar	7
新型高效全锁扣钻杆	9
New High- efficiency Full-Interlocking Kelly Bar	9
摩阻式钻杆	11
Frictional Kelly Bar	11
钻杆技术参数	13
Kelly Bar Technical Parameters	13
<b>旋挖钻具</b>	
<b>Drilling Tools</b>	<b>15</b>
嵌岩截齿筒钻	17
Core Barrel with Bullet Teeth	17
嵌岩双底捞砂斗	19
Drilling Bucket with Rock Drilling Teeth	19
土层双底捞砂斗	21
Drilling Bucket with Soil Drilling Teeth	21
牙轮筒钻	23
Core Barrel with Roller Bit	23
体开钻斗	25
Open-type Bucket	25
螺旋钻具	27
Conicol Auger	27
双底清孔钻斗	29
Cleaning Bucket With Double Bottom	29
扩底钻斗	31
Belling Bucket	31
<b>套管系列</b>	
<b>Casing Series</b>	<b>33</b>
套管	35
Casings	35
套管底环	37
Casing Shoes	37
套管驱动器	39
Casing Drive Adapter	39
<b>旋挖钻机再制造</b>	41
<b>Refurbishment of Piling Rigs</b>	41
<b>旋挖钻机维修</b>	43
<b>Hydraulic Piling Rig Maintenance</b>	43
<b>旋挖钻机配件</b>	45
<b>Hydraulic Piling Rig Accessories</b>	45
<b>客户考察</b>	49
<b>Customers Inspection</b>	49
<b>技术支持与国内外展会</b>	51
<b>Technical Support &amp; Home and Aborad</b>	51
<b>施工案例</b>	53
<b>Construction Case</b>	53
<b>捷泰豪力服务</b>	55
<b>Jietai haoli services</b>	55





捷泰豪力  
JIETAIHAOLI



追求卓越品质 缔造完美品牌



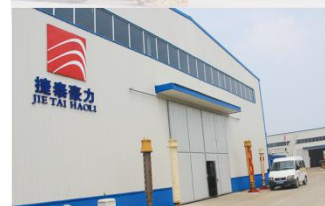
## 公司简介》 BRIEF INTRODUCTION

北京捷泰豪力科技发展有限公司,是集旋挖钻杆研发生产,旋挖钻机维修保养,供应各型号旋挖钻机配件,二手钻机收购租赁销售等为一体的综合性企业。公司成立于2004年,总部设于北京,分厂设于山东寿光。拥有完备的钻杆生产专用制造及检测设备,专业的员工队伍和完善的开发、设计制造和营销及售后服务体系,秉承以技术引领行业发展的宗旨,致力于建设服务全球的技术领先型专业钻杆生产基地。钻杆设计采用国内外多项先进技术,具有强度高,重量轻,高耐磨,质量可靠等优势。专利产品大锁扣加压钻杆针对硬岩地层设计,钻进效率更高,加压键更耐磨。公司具有规模化生产优势,备有大量的成品和半成品钻杆库存,生产周期短,交货快捷,服务配件充足。钻杆及配件成功配套宝峨,意马,土力,迈特,卡萨格兰地,三一,徐工,中车,中联等品牌旋挖钻机,批量出口到阿联酋,埃及,印度,新加坡,马来西亚,泰国,越南,哥伦比亚等。

公司以“诚信做人,用心做事”为基本原则,本着“以客户为本”的服务态度,以“诚信、开拓、创新、务实”的经营理念,不断推动旋挖钻机钻杆加工工艺技术的改良,旋挖钻机维修国产化,配件国产产业化,不断提高产品质量,用一流的管理,先进的制造工艺,专业的维修技术和售后服务,努力为客户提供优质的产品和一流的服务。竭诚与所有的旋挖钻机客户形成最佳的合作伙伴!

JTHL is a professional Kelly bar manufactory which founded in 2004 year, the main workshop located in Beijing. The branch workshop located in Shouguang city, Shandong province, China. Which specialized in producing Kelly bar, refurbished used drilling rig. Drilling rig spare parts, like gearbox, motor, swivel joint, etc. The advantages of our Kelly bar, such as low weight, high strength, high abrasion-resistance, highly-reliability are safeguarded technology by superior process, advanced machining equipments and special fixtures. Especially the patent technology bigger lock Kelly bar is specially for strong hard rock layer, higher drilling working efficiency, more resistant to wear and tear. Normal standard dimension replacement spare parts as ready stock to ensure quickly delivery time. Till now we have dozens of technical patents, ISO9001:2008 certifications, SGS, 35 production proprietary technologies. And we have dealer in Hunan province, middle agent in Singapore, UAE, Thailand. End customer in Colombia, Malaysia, Egypt, Vietnam, Pakistan, etc. We sincerely to supply you with good quality and professional technology.

Our company is based on the "Conduct myself faithfully, Concentrate on work" as the principle, based on the spirit of "Customer-oriented" service attitude, and "Honesty, Pioneering, Innovative and Pragmatic" as the business management philosophy. Aiming to improve technology of piling rig kelly bars constantly. Continuously improve the localization work of piling rig maintenance and spares. Continuously improve product quality. We strive to provide customer with the first-class management, advanced manufacturing technology, professional maintenance technology and after-sale service, and hope to be best cooperation partner with all the rotary piling rig customers.



## ■ 旋挖钻杆 Kelly Bar

完备的钻杆生产专用制造及检测设备, 专业的员工队伍和完善的开发、

设计制造和营销及售后服务体系, 采用国内外多项先进技术。

Complete drill pipe production special manufacturing and testing equipment, professional staff and improve the development, design and manufacture and marketing and after-sales service system, using a number of advanced technology at home and abroad.





复合式钻杆是一种由机械式和全锁扣式、摩擦式等多种形式组合在一起的钻杆,可有多种不同的搭配方式。  
 全锁扣加压钻杆是由三组带凹凸齿的键条等分组合而成(见图所示)。  
 全锁扣加压钻杆在钻孔过程中动力头旋转的内键与钻杆外键可以随时随地形成锁扣加压,直接将动力头上的加压力通过钻杆的凹凸齿直接全力传送到钻头上,目前这种钻杆传递加压力是最好的。特别是对坚硬的地层及冻土层的施工。  
 在钻进过程中对钻杆每个部位都可以形成加压力,减少对始终局部受加压力齿键条的磨损,也避免了钻杆始终在某部位加压力易造成管壁变形卡钻的难点,用时驱动内键均布的凹凸齿键与外凹凸齿键形成良好的啮合,在加压力的部位形成多点加压力,受力均布稳定不易卡钻,尤为提高工作效率,从而得到很多旋挖用户的好评。  
 该钻杆已申请专利,专利号: ZL 201220161611.0 ZL201320083189.6



Combined type kelly bar is one kind of kelly bar which can be formed by interlocking type,full-interlocking type ,frictional type and other various types.  
 Full-interlocking Kelly bar is composed of three weld-on ribs with continuous concave and convex keys (see chart)  
 During the drilling process, the downward thrust is transmitted to drill bucket directly by rotation power of Rotary head inner ribs and Kelly bar outer ribs at any time . This type of Kelly bar is the best one of transferring pressure at present , especially for hard ground and frozen oil layer construction. In the drilling process , every continuous steps can form pressure point to reduce wear and tear of local pressurization key lines, also to avoid the stick problem that Kelly pipe is deformation always in a part pressurization. When drilling progress, driving the inner convex concave tooth key and the outer convex concave tooth key uniformly forms good engagement, the advantage is force uniform, not easy to stick pipe, particularly to improve work efficiency . It has gotten high praise from home and abroad rotary rig user.  
 This type Kelly bar has applied for patent, the patent No. is ZL 201220161611.0 ZL201320083189.6



机锁加压钻杆是采用国际上先进的六键式键型分布和超大加压台组成的一种钻杆形式该钻杆外键为六键式键型分布带有多组超大加压台组成,内键板是由整体合金钢锻压成型,经特殊热处理工艺处理,耐压耐磨焊接性良好.机锁加压钻杆是根据国内钻机配置需要和工况需求,结合国外钻杆的加工设计工艺制造,配套于国内外各种大型旋挖钻机。

Interlock Kelly bar adopts the international advanced six-ribs distribution technology. This type Kelly bar consists of telescopic tubular sections with a system of multy-step drive keys and lock recesses, welded onto their outer surfaces. The inner keyboards are manufactured from high-tensile steel . The special heat treatment which make this style Kelly bar with high abrasion resistance, compression resistance and excellent welding properity.

interlock Kelly bar is based on domestic rig configuration and condition demand, combined with the home and abroad advanced manufacture technology, supporting domestic and foreign rotary piling rig.





新型高效全锁扣钻杆 是由普通机锁钻杆与全锁扣钻杆组合优化合成，为我公司的主打产品。该钻杆第一节为普通机锁钻杆形式，里面几节内键是由三组加压台阶组成，外键由三段三组凹凸形式的加压台阶组成。

新型高效全锁扣钻杆 是根据国内钻机配置需要和工况需求，结合国外钻杆的加工设计工艺制造，配套于国内外各种大型旋挖钻机。该钻杆采用高强合金管材，耐磨合金键条，并对加压点，方头，挡环等易损件作特殊工艺处理，确保钻杆的可靠性和使用性。该钻杆适合于坚硬的岩石底层，冻土层，鹅卵石层，钻杆的向下传递加压力大，压力损失小且传递速度快。

该钻杆已申请专利，专利号：201420542676.9（新型高效耐用机锁钻杆）

New High -efficiency Full-Interlocking Kelly Bar is composed of interlocking Kelly bar and full interlocking Kelly bar. It's our leading products. The first section is ordinary interlocking type, internal keys of inner sections are composed of three groups of pressure stage. The outer keys are consisted of three- piece of three group of concave - convex pressure stage. This type kelly bar is based on domestic rig configuration and condition demand, combined with the home and abroad advanced manufacture technology, supporting domestic and foreign rotary piling rig. Adope high-strength alloy steel and wear-resistant alloy strip, take special process to the pressure point, kelly box head ,stop ring and other wearing spares, to make sure the durability and reliability of kelly bars. This kind of kelly bar is especially suitable for hard layer, frozen layer, pebble layer. With the advantage of large downward transmission pressure ,small pressure loss, fast transmission speed.

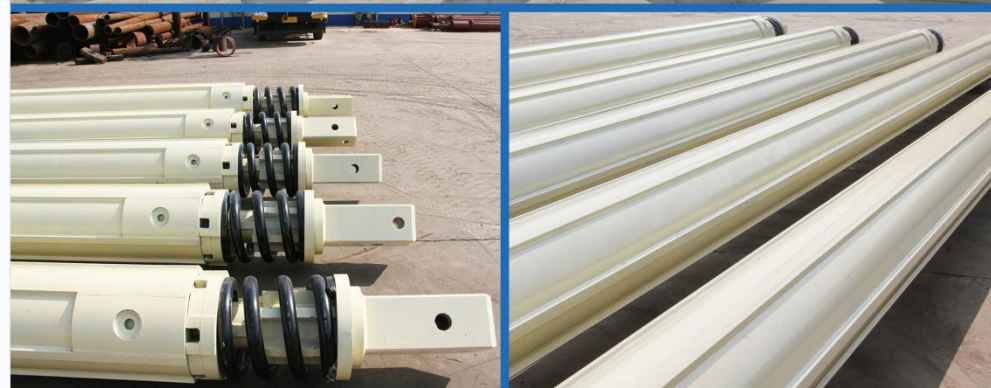
This type Kelly bar has applied for patent, the patent No. is 201420542676.9





摩阻式钻杆外键是采用国际上先进的六键式键型分布技术组成的一种钻杆形式。该钻杆是在钻杆转动时产生的圆周力及动力头加压时向下传递加压产生摩擦力进行加压，操作简单，钻深大，适合钻进软土层和泥砂层。整套钻杆重量轻，强度高，单节钻杆直线度高；内外层搭配合理，键板耐磨性好，极大的满足了钻机对钻杆的特殊要求。

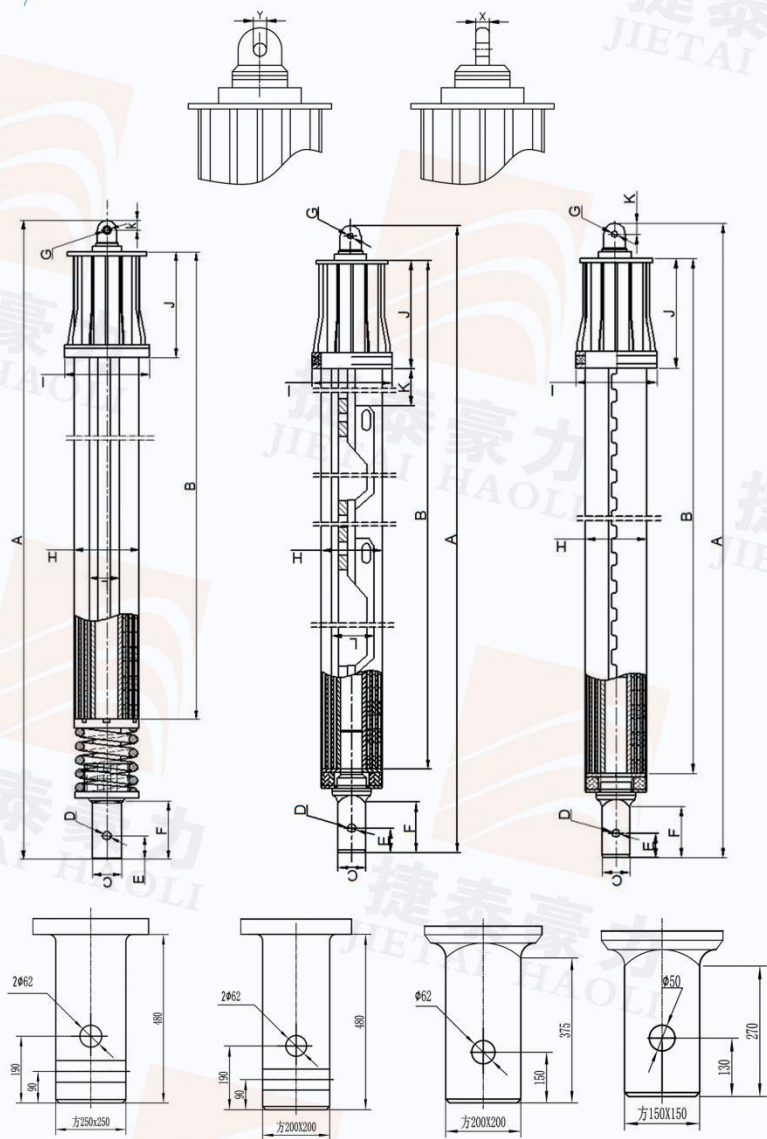
该钻杆已申请专利，专利号：201420542678.8



Friction type drill Kelly bar is a kind of drill pipe type with international advanced six-ribs distribution technology composition. The Kelly bar can generate pressure force when the Kelly bar rotarying can produce peripheral force and the rotary passing down the pressure force can produce the friction force. It is simple operation, drilling depth. it is suitable for soft soil layer and mud sand layer. The complete set of Kelly bar is with light weight, high strength, high linearity of the single drill pipe.; The inner and outer layer collocate reasonably, with good wear resistance plate.. it is greatly to meet the special requirement of the drill rig machines.

This type Kelly bar has applied for patent, the patent No. is 201420542678.8




**可定制项目 Customizable**

根据客户要求定制, 同时具备自行开发新产品及生产能力, 可根据客户来图来样定制非标产品。

Samples to customize, we have capacity to design the new products. Can design nonstandard products according to customer's drawing and sample.

外径 OD (mm)	钻杆形式 Model	节数 Section	单节长度 Tube length (m)	钻孔深度 Drilling depth (m)	扭矩 Torque (KN.M)
φ 299/305	机锁杆 /Interlock	3/4	9—14	24—65	110—120
	磨阻杆 /Friction	3/4/5			
φ 340/343	机锁杆 /Interlock	3/4	9—14	24—65	110—120
	磨阻杆 /Friction	3/4/5			
φ 355	机锁杆 /Interlock	3/4	9—14	24—65	110—120
	磨阻杆 /Friction	3/4/5			
φ 368	机锁杆 /Interlock	3/4	9—14	24—65	150—180
	磨阻杆 /Friction	3/4/5			
φ 377	机锁杆 /Interlock	3/4	9—14	24—65	150—180
	磨阻杆 /Friction	3/4/5			
φ 394	机锁杆 /Interlock	3/4	9—15	24—70	180—200
	磨阻杆 /Friction	3/4/5			
φ 406	机锁杆 /Interlock	3/4	9—15	24—70	180—200
	磨阻杆 /Friction	3/4/5			
φ 419/426	机锁杆 /Interlock	3/4	9—15	24—70	200—230
	磨阻杆 /Friction	3/4/5			
φ 440/445	机锁杆 /Interlock	3/4	9—15	24—85	220—260
	磨阻杆 /Friction	3/4/5/6			
φ 470	机锁杆 /Interlock	3/4	9—18	24—102	220—260
	磨阻杆 /Friction	3/4/5/6			
φ 482	机锁杆 /Interlock	3/4	9—18	24—102	220—260
	磨阻杆 /Friction	3/4/5/6			
φ 508/510	机锁杆 /Interlock	3/4	9—18	24—102	260—360
	磨阻杆 /Friction	3/4/5/6			
φ 530	机锁杆 /Interlock	3/4/5	9—20	32—114	320—400
	磨阻杆 /Friction	3/4/5/6			
φ 558/560	机锁杆 /Interlock	3/4/5	9—24	32—118	360—420
	磨阻杆 /Friction	3/4/5/6			
φ 575/580	机锁杆 /Interlock	3/4/5	9—24	32—118	360—420
	磨阻杆 /Friction	3/4/5/6			
φ 630	机锁杆 /Interlock	3/4/5	9—26	32—150	400—500
	磨阻杆 /Friction	3/4/5/6			

## ■ 旋挖钻具 Drilling Tools

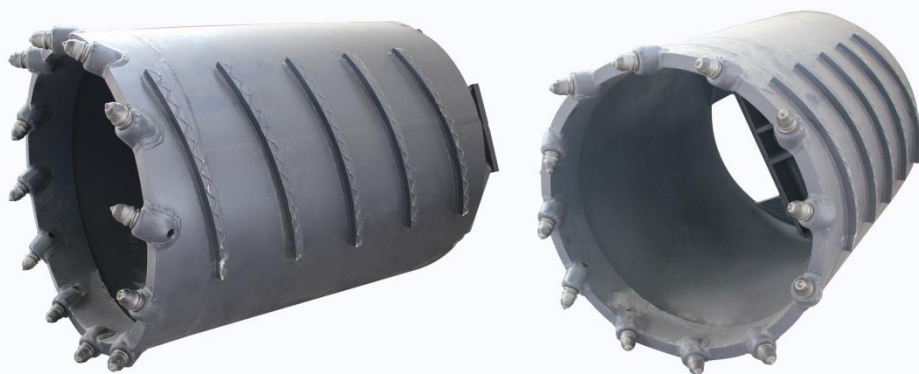
多种多样的钻具型谱，同时为客户的特殊需求进行针对性研发定制。

广泛应用于回填层、土层、岩层、卵石层、砂层、黏土层、溶洞地层、基岩层等

Variety drilling tools for option, while can custom for the special demand.

All the drilling tools was widely used in Backfill layer, soil layer, rock layer, pebble layer, sand layer, clay layer, karst stratum, bedrock layer, etc.




**■ 钻具特点 Feature**

- ▶ 筒体环切释放岩石围压  
Cutting ring with rock drilling bits and releases the internal stress of rock.
- ▶ 截齿阶跃破碎兼研磨钻进  
Rock drilling bits perform stage breaking and drilling.
- ▶ 小钻具取芯率高，大钻具分级配合破碎  
Small barrel facilitates the coring operation; large barrel performs stage breaking.
- ▶ 适用地层：回填层、中风化岩层、基岩层  
Applicable layers: backfill layer, medium weathered rock, bedrock.


**型谱表 ModelList**

钻具直径 Diameter	筒壁厚度 Shell Thk	加强圈壁度 Strengthen Ring Thk	筒体高度 Shell Height	齿数 Teeth Number	重量 Weight
600	16	40	1200	6	600
700	16	40	1200	7	685
800	16	40	1200	9	800
900	16	40	1200	10	900
1000	20	40	1200	12	1025
1200	20	40	1200	15	1240
1250	20	40	1200	15	1285
1300	20	40	1200	16	1465
1400	20	40	1200	17	1570
1500	20	40	1200	18	1615
1800	20	40	1000	24	2295
2000	20	40	800	27	3000
2200	20	40	800	32	3580
2500	20	40	800	38	4066
可选方头 Kelly Box	三一150方 150*150		宝峨200方 200*200		宝峨250方 250*250

备注：度量单位为mm，重量单位为kg。数据仅供参考，可根据施工地质确认钻斗选型。  
The unit of measurement is millimeters and the weight is kilograms. The data are for reference only.  
The drill bucket type can be confirmed according to the site layer condition.

**■ 可定制项目 Customizable Items**

- ▶ 切削直径定制：根据客户需求设计切削直径，如  $\phi 950$ 、 $\phi 1050$  等，配合套管施工使用居多；  
Cutting DIA. Custom : design various cutting diameter based on demand, like  $\phi 950$ 、 $\phi 1050$  etc.
- ▶ 筒体高度定制：根据客户需求设计筒体高度，如加高至 1500、2000，增加单次钻进量，提高施工效率；  
Shell HIT. Custom : design as demand, prolong or shorten, increase of efficiency by drilling more.
- ▶ 加重结构加强定制：根据客户需求加强各个部位参数，如壁厚加厚，底板加厚等；  
Small barrel facilitates the coring operation; large barrel performs stage breaking;
- ▶ 方头尺寸定制：根据客户钻杆方头定制钻具方头尺寸，通常为  $130 \times 130$ 、 $150 \times 150$ 、 $200 \times 200$  等；  
Kelly Box Custom : custom kelly box size based on the kelly bar, like  $130 \times 130$ 、 $150 \times 150$ 、 $200 \times 200$  etc;
- ▶ 钻齿数目定制：根据客户需求对钻齿进行加密布置；  
Teeth No. Custom : encrypt the drilling teeth based on demand etc;


**■ 钻具特点 Feature**

- ▶ 可定制手动一体式开锁底机构，内置防吸钻流水孔；  
Option half-automatic or manual mechanic bottom open system. Built-in ventilation pipe;
- ▶ 整体式中心锥，弧形导板布齿，大钻具双开锁底机构设计；  
Cast pilot with rock drilling bits, arc guide plate teeth arrangement, double unlocking system;
- ▶ 钻齿轨迹交错布置，全断面内交叉覆盖，相互制造自由面；  
Staggered arrangement of rock drilling bits;
- ▶ 适用地层：砂砾层、卵石层、强风化、中风化岩层；  
Applicable layers: gravel, pebble, highly or medium weathered rock;


**型谱表 ModelList**

钻具直径 Diameter	筒体高度 Shell Height	筒壁厚度 Shell Thk	底板厚度 Bottom Plate Thk	齿数 Teeth Number	重量 Weight
600	1200	16	40/50	8	730
700	1200	16	40/50	9	800
800	1200	16	40/50	10	920
900	1200	16	40/50	12	1020
1000	1200	16	40/50	14	1250
1200	1200	20	40/50	16	1620
1250	1200	20	40/50	16	1685
1300	1200	20	40/50	17	1765
1400	1200	20	40/50	18	1910
1500	1200	20	40/50	20	2225
1600	1200	20	40/50	22	2450
1800	1000	20	50/50	24	3110
2000	800	20	50/50	26	3500
2200	800	20	50/50	26	4750
2500	800	20	50/50	28	
3000	800	20	50/50	35	
可选方头 Kelly Box	三一150方 150*150		宝峨200方 200*200		宝峨250方 250*250
钻底样式 Bottom Type	双底双开门 Double Bottom Double Cut			单底双开门 Single Bottom Double Cut	

备注：度量单位为mm，重量单位为kg。数据仅供参考，可根据施工地质确认钻斗选型。

The unit of measurement is millimeters and the weight is kilograms. The data are for reference only. The drill bucket type can be confirmed according to the site layer condition.

**■ 可定制项目 Customizable Items**

- ▶ 切削直径定制：根据客户需求设计切削直径，如  $\phi 950$ 、 $\phi 1050$  等，配合套管施工使用居多；  
Cutting DIA. Custom : design various cutting diameter based on demand, like  $\phi 950$ 、 $\phi 1050$  etc.
- ▶ 筒体高度定制：根据客户需求设计筒体高度，如加高至 1500,2000, 增加单次钻进量，提高施工效率；  
Shell HIT. Custom : design as demand, prolong or shorten, increase of efficiency by drilling more.
- ▶ 关重结构加强定制：根据客户需求加强各个部位参数，如壁厚加厚，底板加厚等；  
Small barrel facilitates the coring operation; large barrel performs stage breaking;
- ▶ 进土口定制：单开门、双开门可依据客户需求定制；  
Cutter Custom: single cutter and double cutter design as demand;
- ▶ 单双底定制：单底、双底可依据客户需求定制；  
Bottom Custom : single bottom and double bottom design as demand;
- ▶ 方头尺寸定制：根据客户钻杆方头定制钻具方头尺寸，通常为 130×130、150×150、200×200 等；  
Kelly Box Custom : custom kelly box size based on the kelly bar, like 130\*130, 150\*150,200\*200 etc;
- ▶ 开锁底机构定制：半自动、手动开锁底机构可依据客户需求定制；  
Bottom Open Mechanic : half-automatic or manual mechanic bottom open system.


**■ 钻具特点 Feature**

- ▶ 可选加长直筒体设计，防止钻进时斜孔  
Option prolong straight bucket shell can avoid drilling hole inclined
- ▶ 可以选择锥筒设计，加快卸土，提升施工效率  
Choosing conical shell type can accelerate dumping, increase of efficiency
- ▶ 内置防吸钻流水孔，依工况增加裙边  
Ventilation pipe shaft inside prevents vacuum; add collar plate according to working conditions
- ▶ 适用地层：淤泥层，砂砾层，粉（粘）土层，强风化岩层等  
Applicable scope: silt, gravel, clay and highly weathered rock


**型谱表 ModelList**

钻具直径 Diameter	筒体高度 Shell Height	筒壁厚度 Shell Thk	底板厚度 Bottom Plate Thk	齿数 Teeth Number	重量 Weight
600	1200	16	40/50	4	680
700	1200	16	40/50	4	740
800	1200	16	40/50	4	850
900	1200	16	40/50	5	995
1000	1200	16	40/50	6	1200
1200	1200	20	40/50	7	1535
1250	1200	20	40/50	8	1590
1300	1200	20	40/50	8	1670
1400	1200	20	40/50	9	1820
1500	1200	20	40/50	9	2150
1600	1200	20	40/50	10	2350
1800	1000	20	50/50	12	2950
2000	800	20	50/50	14	3330
2200	800	20	50/50	16	4575
2500	800	20	50/50	19	5000
3000	800	20	50/50	24	
可选方头 Kelly Box	三一150方 150*150		宝峨200方 200*200		宝峨250方 250*250
钻底样式 Bottom Type	双底双开门 Double Bottom Double Cut			单底双开门 Single Bottom Double Cut	

备注：度量单位为mm，重量单位为kg。数据仅供参考，可根据施工地质确认钻斗选型。  
The unit of measurement is millimeters and the weight is kilograms. The data are for reference only.  
The drill bucket type can be confirmed according to the site layer condition.

**■ 可定制项目 Customizable Items**

- ▶ 切削直径定制：根据客户需求设计切削直径，如  $\phi 950$ 、 $\phi 1050$  等，配合套管施工使用居多  
Cutting DIA. Custom : design various cutting diameter based on demand, like  $\phi 950$ 、 $\phi 1050$  etc.
- ▶ 筒体高度定制：根据客户需求设计筒体高度，如加高至 1500,2000, 增加单次钻进量，提高施工效率  
Shell H.T. Custom : design as demand, prolong or shorten, increase of efficiency by drilling more.
- ▶ 关重结构加强定制：根据客户需求加强各个部位参数，如壁厚加厚、底板加厚等  
Small barrel facilitates the coring operation; large barrel performs stage breaking.
- ▶ 进土口定制：单开门、双开门可依据客户需求定制  
Cutter Custom: single cutter and double cutter design as demand.
- ▶ 单双底定制：单底、双底可依据客户需求定制  
Bottom Custom : single bottom and double bottom design as demand.
- ▶ 方头尺寸定制：根据客户钻杆方头定制钻具方头尺寸，通常为  $130 \times 130$ 、 $150 \times 150$ 、 $200 \times 200$  等  
Kelly Box Custom : custom kelly box size based on the kelly bar, like  $130 \times 130$ 、 $150 \times 150$ 、 $200 \times 200$  etc.
- ▶ 开锁底机构定制：半自动、手动开锁底机构可依据客户需求定制  
Bottom Open Mechanic : half-automatic or manual mechanic bottom open system.
- ▶ 齿型定制：可依据客户需求定制装配 V20 齿、FZ80 齿、FZ72 齿、22S 齿、TL18 齿、TL25 齿等  
Flat Teeth Custom : equip with V20, FZ80, FZ72, 22S, TL18, TL25, etc, as working condition demand .


**■ 钻具特点 Feature**

- ▶ 筒体环切释放岩石围压：  
Cutting ring with rock drilling bits and releases the internal stress of rock;
- ▶ 牙轮钻齿滚压研磨钻进，钻齿损耗小  
Drilling with the method of rolling and squeezing can increase the anti-wear ability of the barrel
- ▶ 小钻具取芯率高，大钻具分级配合破碎  
Small barrel facilitates the coring operation; large barrel performs stage breaking
- ▶ 适用地层：中、微风层岩层，硬岩层，超硬基岩层  
Applicable layers: medium or slightly weathered rock, hard or superhard bedrock

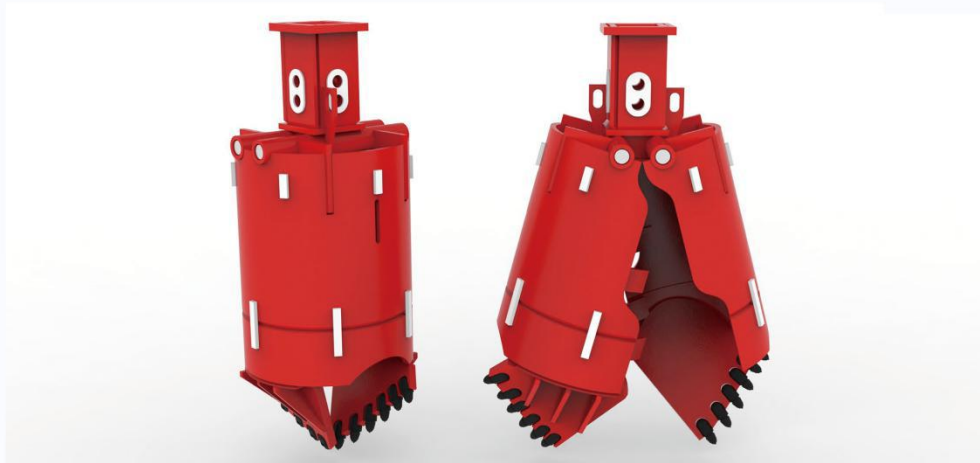

**型谱表 ModelList**

钻具直径 Diameter	筒壁厚度 Shell Thk	加强圈壁度 Strengthen Ring Thk	筒体高度 Shell Height	齿数 Teeth Number	重量 Weight
600	20	40	1200	4	
700	20	40	1200	6	
800	20	40	1200	6	
900	20	40	1200	6	
1000	20	40	1200	8	
1200	20	40	1200	9	
1250	20	40	1200	9	
1300	20	40	1200	9	
1400	20	40	1200	10	
1500	20	40	1200	10	
1800	20	40	1200	12	
2000	20	40	1200	13	
2200	20	40	1200	14	
2500	20	40	1200	15	
可选方头 Kelly Box	三一150方 150*150		宝峨200方 200*200	宝峨250方 250*250	

备注：度量单位为mm，重量单位为kg。数据仅供参考，可根据施工地质确认钻斗选型。  
The unit of measurement is millimeters and the weight is kilograms. The data are for reference only.  
The drill bucket type can be confirmed according to the site layer condition.

**■ 可定制项目 Customizable Items**

- ▶ 切削直径定制：根据客户需求设计切削直径，如  $\phi 950$ 、 $\phi 1050$  等，配合套管施工使用居多  
Cutting DIA. Custom : design various cutting diameter based on demand, like  $\phi 950$ 、 $\phi 1050$  etc.
- ▶ 筒体高度定制：根据客户需求设计筒体高度，如加高至 1500、2000，增加单次钻进量，提高施工效率  
Shell H/T. Custom : design as demand, prolong or shorten, increase of efficiency by drilling more.
- ▶ 关键结构加强定制：根据客户需求加强各个部位参数，如壁厚加厚，底板加厚等  
Small barrel facilitates the coring operation; large barrel performs stage breaking;
- ▶ 方头尺寸定制：根据客户钻杆方头定制钻具方头尺寸，通常为  $130 \times 130$ 、 $150 \times 150$ 、 $200 \times 200$  等  
Kelly Box Custom : custom kelly box size based on the kelly bar, like  $130 \times 130$ 、 $150 \times 150$ 、 $200 \times 200$  etc;
- ▶ 钻齿数目定制：根据客户需求对钻齿进行加密布置  
Teeth No. Custom : encrypt the drilling teeth based on demand etc;
- ▶ 牙轮种类定制：全新硬岩牙轮、二手牙轮以及可拆卸牙轮，可依据客户需求定制  
Roller Bits Custom: new roller bits, used roller bits and detachable roller bit design as demand


**■ 钻具特点 Feature**

- ▶ **大进口口设计，体开式筒体结构，高效卸渣，提升钻进效率**  
Large inlet of soil, open shell design, easy to dump spoil so increases the drilling efficiency
- ▶ **筒体、导板、加强筋强化设计，提升钻斗使用寿命**  
Super strength structure for shell, guide plate, etc, increase the life cycle of bucket
- ▶ **筒体周围布置导条，防止吸钻**  
Guide strips arranged on the surface of bucket can avoid drilling tool sucked by the pressure
- ▶ **适用地层：粘土层、淤泥层、强风化岩层**  
Applicable layers: clay, silt, highly weathered rock


**型谱表 ModelList**

钻具直径 Diameter	筒体高度 Shell Height	筒壁厚度 Shell Thk	齿板厚度 Teeth Plate Thk	齿数 Teeth Number	重量 Weight
600	1200	30/30	50	8	850
700	1200	30/30	50	9	1010
800	1200	30/40	50	10	1210
900	1200	30/40	50	12	1380
1000	1200	30/40	50	14	1560
1200	1200	30/40	50	18	2310
1500	1200	30/40	50	22	3400
可选方头 Kelly Box	三一150方 150*150		宝峨200方 200*200		宝峨250方 250*250
钻底样式 Bottom Type	土层体开 (配宝峨FZ80 齿或V20 齿) Open-type Soil Bucket (Bauer Teeth FZ80 or V 20)			嵌岩体开 (配嵌岩截齿) Open-type Rock Bucket (Bullet Teeth)	

备注：度量单位为mm，重量单位为kg。数据仅供参考，可根据施工地质确认钻斗选型。  
The unit of measurement is millimeters and the weight is kilograms. The data are for reference only.  
The drill bucket type can be confirmed according to the site layer condition.

**■ 可定制项目 Customizable Items**

- ▶ **切削直径定制：根据客户需求设计切削直径，如 φ950、φ1050 等，配合套管施工使用居多**  
Cutting DIA. Custom : design various cutting diameter based on demand, like φ950、φ1050 etc.
- ▶ **齿型定制：根据客户需求安装不同的齿型，可以安装截齿、FZ80、FZ72、V20、22S 等齿型**  
Teeth Custom : equiped different teeth, like bullet teeth, flat teeth according to different working condition
- ▶ **方头尺寸定制：根据客户钻杆方头定制钻具方头尺寸，通常为 130×130、150×150、200×200 等**  
Kelly Box Custom : custom kelly box size based on the kelly bar, like 130\*130, 150\*150,200\*200 etc.





#### ■ 钻具特点 Feature

- ▶ 中心锥引导，锥形钻进，破碎岩石  
Location by pilot, conical structure drilling into the rock
- ▶ 双头螺旋受力均匀，不宜偏孔  
Double cutter bearing uniform force, can avoid inclined hole
- ▶ 双螺旋携渣能力强，黏性地层时，单螺易于卸渣  
Double spiral easy to carry soil, but meet cohesive soil, single spiral is easy to dump spoil
- ▶ 适用地层：卵石层，泥岩，砂岩层，强、中风化硬岩层  
Applicable layers: medium weathered rock, bedrock

#### ■ 可定制项目 Customizable Items

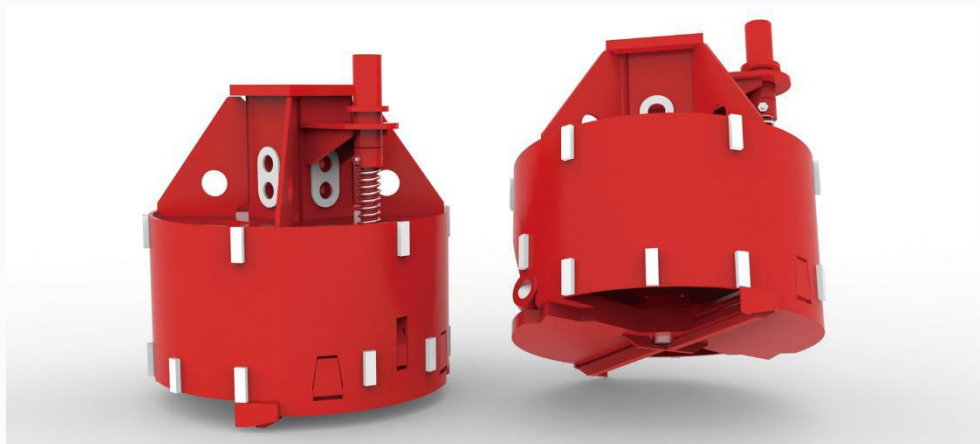
- ▶ 切削直径定制：根据客户需求设计切削直径，如  $\phi 950$ 、 $\phi 1050$  等，配合套管施工使用居多  
Cutting DIA. Custom : design various cutting diameter based on demand, like  $\phi 950$ 、 $\phi 1050$  etc.
- ▶ 螺旋高度定制：根据客户需求设计螺旋高度，如加高至 1500,2000，增加单次钻进量，提高施工效率  
Spiral HIT. Custom : design as demand, prolong or shorten, increase of efficiency by drilling more.
- ▶ 螺旋叶片间距定制：根据客户需求设计螺旋叶片间距，400、500、600，调整携渣及卸渣能力等  
Spiral Pitch Custom : adjust the spiral pitch according to different working condition.
- ▶ 方头尺寸定制：根据客户钻杆方头定制钻具方头尺寸，通常为  $130 \times 130$ 、 $150 \times 150$ 、 $200 \times 200$  等  
Kelly Box Custom : custom kelly box size based on the kelly bar, like  $130 \times 130$ 、 $150 \times 150$ 、 $200 \times 200$  etc.
- ▶ 关键结构加强定制：根据客户需求加强各个部位参数，如壁厚加厚，底板加厚等  
Key Component Reinforce Custom : strengthen the key component to extend life cycle.

#### 型谱表 ModelList

钻具类型 Tools Type	钻具直径 Diameter	螺旋高度 Spiral HIT.	叶片厚度 Blade Thk	中心管直径 Center Tube OD.	齿数 Teeth Number	重量 Weight
单头单螺旋	600	1200	20+30	219	10	475
	700	1250	20+30	219	10	520
	800	1250	20+30	219	12	590
	900	1250	20+30	219	12	610
	1000	1250	20+30	219	13	670
	1200	1250	30+30	219	14	930
	1500	1250	30+30	273	17	1400
双头单螺旋	600	1200	20+30	219	18	550
	700	1250	20+30	219	18	590
	800	1250	20+30	219	22	675
	900	1250	20+30	219	22	755
	1000	1250	20+30	219	24	850
	1200	1250	30+30	219	26	1175
	1500	1250	30+30	273	31	1470
双头双螺旋	600	1200	20+30	219		
	700	1250	20+30	219		
	800	1250	20+30	219		
	900	1250	20+30	219		
	1000	1250	20+30	219		
	1200	1250	30+30	219		
	1500	1250	30+30	273		
可选方头 Kelly Box	三一150方 150*150		宝峨200方 200*200		宝峨250方 250*250	

备注：度量单位为mm，重量单位为kg。数据仅供参考，可根据施工地质确认钻斗选型。  
The unit of measurement is millimeters and the weight is kilograms. The data are for reference only.  
The drill bucket type can be confirmed according to the site layer condition.




**■ 钻具特点 Feature**

- ▶ 锥筒、直筒依工况酌情选取  
Choose conical or straight bucket according to different working conditions
- ▶ 直导板或无导板依工况酌情选取  
Choose straight guide plate or no guide plate according to different working conditions
- ▶ 适用范围：清理孔底沉渣，流塑性软土地层  
Applicable scope: cleaning spoil at pile bottom, soft layer

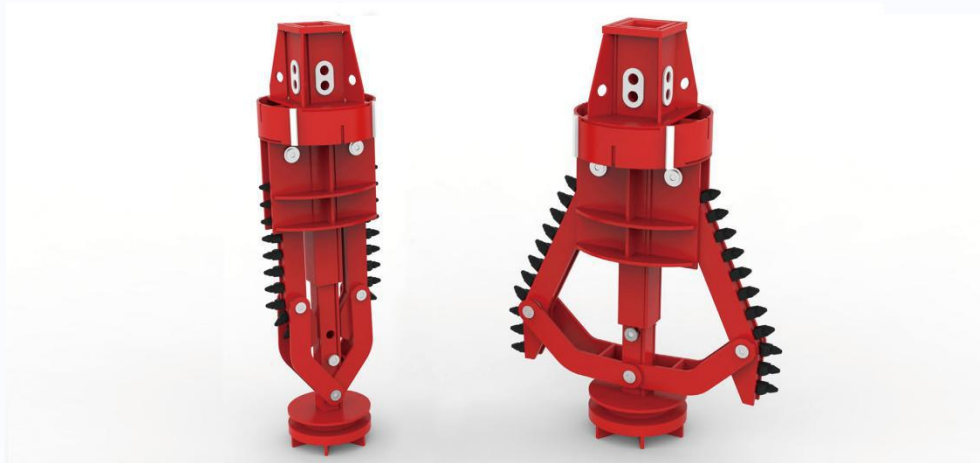

**型谱表 ModelList**

钻具直径 Diameter	筒体高度 Shell Height	筒壁厚度 Shell Thk	固定底厚度 Bottom Plate Thk	齿数 Teeth Number	重量 Weight
600	900	16	40/50	/	
700	900	16	40/50	/	
800	900	16	40/50	/	
900	900	16	40/50	/	
1000	900	16	40/50	/	
1200	900	20	40/50	/	
1250	800	20	40/50	/	
1300	800	20	40/50	/	
1400	800	20	40/50	/	
1500	800	20	40/50	/	
1600	800	20	50/50	/	
1800	800	20	50/50	/	
2000	800	20	50/50	/	
2200	600	20	50/50	/	
2500	600	20	50/50	/	
3000	600	20	50/50	/	
可选方头 Kelly Box	三一150方 150*150		宝峨200方 200*200		宝峨250方 250*250
钻底样式 Bottom Type	双底双开门 Double Bottom Double Cut			单底双开门 Single Bottom Double Cut	

备注：度量单位为mm，重量单位为kg。数据仅供参考，可根据施工地质确认钻斗选型。  
The unit of measurement is millimeters and the weight is kilograms. The data are for reference only.  
The drill bucket type can be confirmed according to the site layer condition.

**■ 可定制项目 Customizable Items**

- ▶ 切削直径定制：根据客户需求设计切削直径，如  $\phi 950$ 、 $\phi 1050$  等，配合套管施工使用居多；  
Cutting DIA. Custom : design various cutting diameter based on demand, like  $\phi 950$ 、 $\phi 1050$  etc.
- ▶ 筒体高度定制：根据客户需求设计筒体高度，增加单次钻进量，提高清渣效率  
Shell HIT. Custom : design as demand, prolong or shorten, increase of efficiency by cleaning more.
- ▶ 单双底定制：单底、双底可依据客户需求定制  
Bottom Custom : single bottom and double bottom design as demand.
- ▶ 方头尺寸定制：根据客户钻杆方头定制钻具方头尺寸，通常为  $130 \times 130$ 、 $150 \times 150$ 、 $200 \times 200$  等  
Kelly Box Custom : custom kelly box size based on the kelly bar, like  $130 \times 130$ 、 $150 \times 150$ 、 $200 \times 200$  etc.
- ▶ 开锁底机构定制：半自动、手动开锁底机构可依据客户需求定制  
Bottom Open Mechanic : half-automatic or manual bottom open system.


**■ 钻具特点 Feature**

- ▶ 可根据需求调节扩底直径  
Adjustable cutting arms can meet the specific requirements of different reaming diameters
- ▶ 配合捞砂斗或清孔钻头一起使用  
After reaming the bore hole, convey spoil with drilling bucket or cleaning bucket
- ▶ 箱式主体结构，结构简单，缩、扩灵活，维护方便  
Cutting arms are easy to spread and retract; box-type structure is easy to maintenance
- ▶ 适用地层：硬质土层、冻土层、中软岩层  
Applicable layers: hard stratum, frozen soil and medium soft rock


**型谱表 ModelList**

型谱规格 Model Size	钻具高度 Height	限位孔个数 Limit Hole No.	齿数 Teeth Number
600 扩1200	3050	2	28
800 扩1600	3100	3	28
900 扩1800	3050	3	28
1000 扩2000	3050	3	30
1100 扩2200	3050	4	30
1200 扩2400	3050	4	30
1500 扩3000	4000	4	32
可选方头 Kelly Box	三一150方 150*150	宝峨200方 200*200	

备注：度量单位为mm，重量单位为kg。数据仅供参考，可根据施工地质确认钻斗选型。  
The unit of measurement is millimeters and the weight is kilograms. The data are for reference only.  
The drill bucket type can be confirmed according to the site layer condition.

**■ 可定制项目 Customizable Items**

- ▶ 型号直径定制：根据客户需求设计切削直径，如  $\phi 950$ 、 $\phi 1050$  等  
Model DIA. Custom: design various cutting diameter based on demand, like  $\phi 950$ 、 $\phi 1050$  etc.
- ▶ 关键结构加强定制：根据客户需求加强各个部位参数，如壁厚加厚，底板加厚等  
Key Component Reinforce Custom: strengthen the key component to extend life cycle.
- ▶ 方头尺寸定制：根据客户钻杆方头定制钻具方头尺寸，通常为  $130 \times 130$ 、 $150 \times 150$ 、 $200 \times 200$  等  
Kelly Box Custom: custom kelly box size based on the kelly bar, like  $130 \times 130$ 、 $150 \times 150$ 、 $200 \times 200$  etc.
- ▶ 翼展数目定制：可依据客户需求设计为两翼扩底钻、三翼扩底钻等  
Swing No. Custom: double swing or tribble swing design as demand.
- ▶ 限位孔数定制：可依据客户需求设计多个限位孔，满足不同直径的扩底需求  
Limit Hole No. Custom: add more limit hole to satisfy different reaming diameter demand.

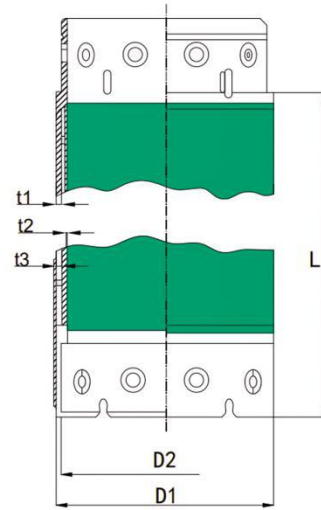
## ■ 套管系列 Casing Series

根据实际工况选择配置旋挖钻机、搓管机、全回转钻机 etc 辅助设备驱动

以及起拔。套管接口完全匹配宝峨尺寸，全套管施工工法设备全套供应。

According to the working conditions, can use rotary drilling rig, casing oscillator, casing rotator and other auxiliary equipment to drive and extract the casing. Casing interface is fully matched with the size of Bauer, full casing construction method one-stop shop.




**型谱表 ModelList**

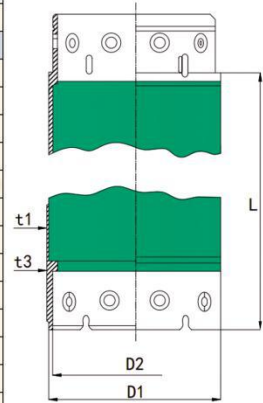
备注：度量单位为mm，重量单位为kg。数据仅供参考。  
The unit of measurement is millimeters and the weight is kilograms. The data are for reference only.

套管直径 D1/D2	外筒厚度 t1	内筒厚度 t2	套管厚度 t3	螺旋数目 Bolts No.	有效长度 L/effective length					
					1m	2m	3m	4m	5m	6m
双壁单排套管 Double wall single row casing					重量 Weight					
620/540	12	8	40	8	403	739	1074	1411	1747	2081
750/670	12	8	40	10	492	902	1311	1722	2131	2540
880/800	12	8	40	10	585	1069	1552	2036	2520	3005
1000/920	12	8	40	10	669	1221	1773	2326	2877	3429
1180/1100	16	8	40	12	844	1580	2316	3052	3787	4522
1200/1120	16	8	40	12	872	1620	2370	3120	3870	4620
1300/1220	16	8	40	12	933	1746	2558	3372	4184	4995
1500/1400	20	10	50	12	1433	2625	3817	5009	6201	7393
1800/1700	20	10	50	16	1730	3166	4602	6038	7474	8910
2000/1880	20	15	60	12	2450	4280	6110	7940	9770	11600
2200/2080	20	15	60	12	2700	4720	6740	8760	10780	12800
2500/2380	20	15	60	16	2960	5240	7520	9800	12080	14360

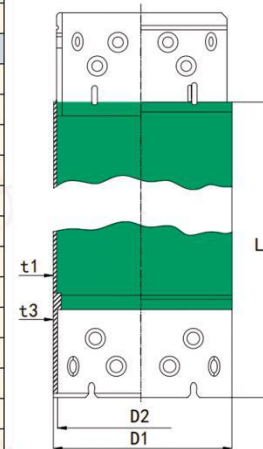
**特点**

- ▶ 主要用于不稳定土壤层条件下钻孔的稳定
- ▶ 用于传输由旋挖钻机和摇臂器产生的高扭矩和挖掘力
- ▶ 双层套管结构，增强了套管的刚度和硬度，使套管可以提供连续的防护（防止钻具在钻入和抽出时卡住）
- ▶ 鉴于需要传输的扭矩越来越大，客户要求的套管越来越长，磨损越来越快，可提供不同于标准套管的加强型套管以供选择。与标准套管不同之处在于它的内管要更加坚硬。内管壁厚有12mm（外径为620-1300mm）和16mm（外径为1500-1800mm）两种

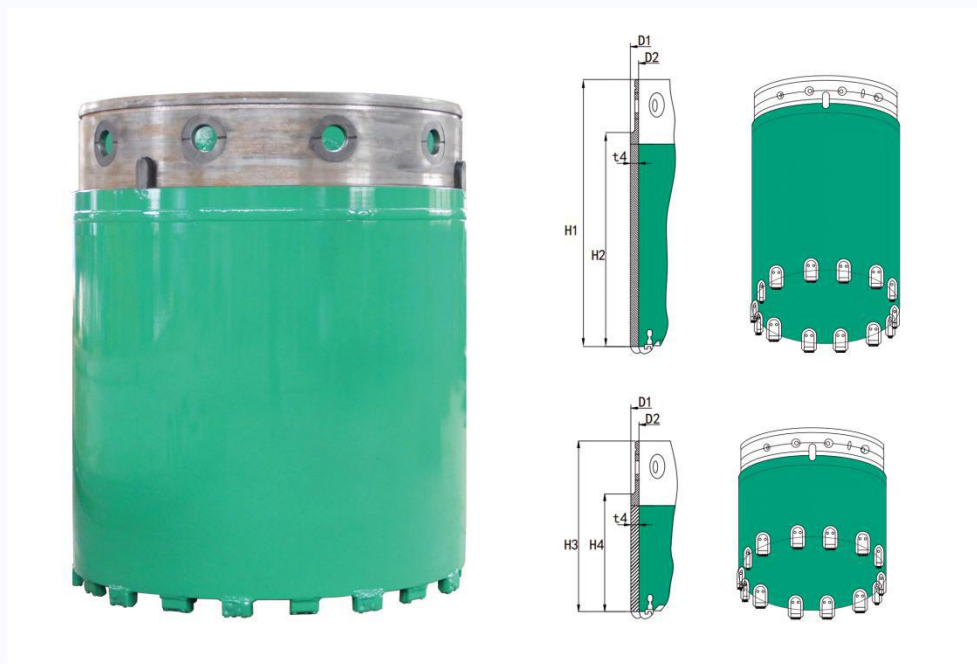
套管直径 D1/D2	壁厚 t1	套管厚度 t3	螺旋数目 Bolts No.	有效长度 L/effective length					
				1m	2m	3m	4m	5m	6m
单壁单排套管 Single wall single row casing				重量 Weight					
800/720	20	40	8	518	870	1222	1574	1926	2278
980/880	20	40	8	595	999	1403	1807	2211	2615
1180/1080	20	40	10	673	1129	1585	2041	2497	2953
1280/1180	20	40	10	751	1259	1767	2275	2783	3058
1380/1280	20	40	12	829	1389	1949	2509	3069	3629
1480/1380	20	40	12	905	1515	2125	2735	3345	3955
1600/1500	20	40	12	983	1647	2310	2973	3636	4299
1800/1700	20	50	12	1230	1944	2658	3372	4086	4800
1980/1880	20	50	12	1321	2087	2853	3619	4385	5151
2000/1880	25	50	12	1513	2532	3551	4570	5589	6608
2200/2080	25	50	16	1707	2856	4005	5154	6303	7452
2400/2280	30	60	16	2452	3982	5512	7042	8572	10102
2600/2480	30	60	20	2704	4389	6074	7759	9444	11129
3000/2880	35	60	20	3106	5248	7390	9532	11674	13816



套管直径 D1/D2	壁厚 t1	套管厚度 t3	螺旋数目 Bolts No.	有效长度 L/effective length				
				2m	3m	4m	5m	6m
双壁双排套管 Double wall double row casing				重量 Weight				
800/720	20	40	8	1103	1507	1911	2315	2719
980/880	25	50	12	1645	2263	2881	3499	4117
1180/1080	30	50	12	2185	3078	3971	4864	5757
1280/1180	30	50	12	2376	3347	4318	5289	6260
1380/1280	30	50	12	2567	3615	4663	5711	6759
1480/1380	30	50	16	2759	3885	5011	6137	7263
1600/1500	30	50	16	2989	4208	5427	6646	7865
1800/1700	30	50	20	3371	4745	6119	7493	8867
1980/1880	40	50	20	4360	6369	8378	10387	12396
2000/1880	40	60	20	4747	6776	8805	10834	12863
2200/2080	40	60	20	5233	7469	9705	11941	14177
2400/2280	40	60	24	5720	8163	10606	13049	15492
2600/2480	40	60	24	6364	9014	11664	14314	16964
3000/2880	40	60	24	7362	10426	13490	16554	19618


**Feature**

- ▶ Designed for the transmission of high torques and crowd forces generated by rotary drilling rigs and casing oscillators.
- ▶ Produced in double-walled construction as standard. This gives casings additional rigidity and strength and provides a continuous flush drill string (preventing jamming of drilling tools during insertion and extraction).
- ▶ As the amount of torque to be transmitted as well as the required casing depths continue to increase further and further, accompanied by increased wear, we offers a reinforced version as an alternative to standard casings. It differs by comprising a stronger inner tube with a wall thickness of 12 mm (OD 620 - 1300mm) and 16 mm (OD 1500 - 1800 mm).



型谱表 ModelList

备注：度量单位为mm，重量单位为kg。数据仅供参考。  
The unit of measurement is millimeters and the weight is kilograms. The data are for reference only.

长型套管底环/Long version				短型套管底环/Short version				
D1/D2	H1	H2	重量 Weight	H3	H4	重量 Weight	t4	斗齿号 Teeth No.
620/540	1186	954	590	586	354	339	40	16
750/670	1186	954	725	586	354	418	40	16
880/800	1186	954	855	586	354	491	40	18
1000/920	1186	954	975	586	354	560	40	18
1180/1100	1186	954	1160	586	354	665	40	20
1200/1120	1186	954	1177	586	354	677	40	20
1300/1220	1186	954	1275	586	354	733	40	24
1500/1400	1321	969	2005	721	369	1340	50	30
1800/1700	1321	969	2420	721	369	1618	50	36
2000/1880	1402	1002	3290	802	402	2350	60	36
2200/2080	1402	1002	3640	802	402	2580	60	40
2500/2380	1402	1002	4110	802	402	2850	60	46



### 特点 Feature

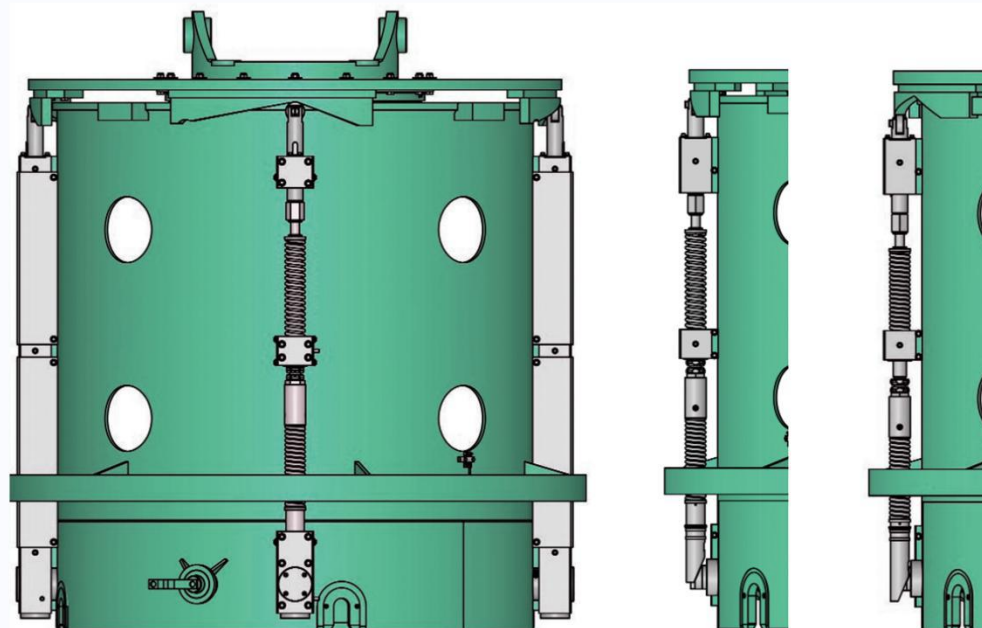
- ▶ 优质的旋转特性  
Optimal rotation characteristics.
- ▶ 公接头和切削环之间的连接为全焊型实体  
Fully welded solid wall connection between male joint section and cutting ring.
- ▶ 可选择垂直耐磨板，增加耐磨防护  
Increased wear protection optionally available in the form of vertical wear plates.
- ▶ 必要时切削环可进行拆卸更换  
Cutting ring can be removed and replaced when necessary.
- ▶ 因持续钻进和长钻头的使用，推荐使用加长型套管底环  
With increased operational demands and for long drilling tools.
- ▶ 磨损最严重的区域为套管底环内壁，靠近钻头的区域。因此套管底环制造的实壁结构就可以保证整个套管的较长的使用寿命。  
use of the long version of the casing shoe is recommended as the most intense strain occurs on the inner surface of the casing shoe in the area of drilling tool action. At this point, the solid-walled construction of the casing shoe ensures a long ensures a long.
- ▶ 套管底环适合装配WS齿座（WS39）或BR和BH型焊接钻齿（其他齿可按要求定制）  
Casing shoes can be fitted with WS tooth holders (WS 39) or weld-on teeth type BR or BH (other types of teeth are available on request).



有效直径范围：从620mm到2500mm  
Available range of diameters 620 to 2,500 mm



手动驱动偏心锁的套管驱动器  
Casing drive adapter with manually actuated with eccentric lock



自动套管驱动器  
Automatic casing drive adapter

未锁  
unlocked

锁定  
locked

有效直径范围：从1000mm到1800mm

Available range of diameters 1,000 to 1,800 mm

钻机的必要改造：

Necessary modifications on drilling rig:

- 动力头上的制动结构
- 所有机械、液压、电器设备

- Break mechanism for rotary drive
- All mechanical, hydraulic and electrical preparation



本公司专业翻新出售二手旋挖钻机 15 年, 品牌有意马, 土力, 宝峨, 卡萨, 迈特, CMV, 三一, 徐工, 中车, 中联重科, 山河智能等。再制造钻机出售国内外, 深得新老客户信赖与支持。

With 15 years experience of refurbishment piling rigs, such as IMT, MAIT, SOILMEC, BAUER, CASAGRANDE, LIEBHERR, CMV, SANY, XCMG, CRRC, Zoomlion, Sunward, etc. Refurbishment equipments have been sold to home and abroad, good quality won the trust and support of new and regular customers.



- Professional maintenance technology
- Good working condition
- Cheap price





本公司专业从事旋挖钻机维修和售后服务,专业的维修团队,成熟的维修经验,承接过国外品牌钻机意马、土力、宝峨、迈特、卡萨格兰地及国内品牌钻三一、徐工、中车、中联、山河智能等。  
 维修项目包括：  
 ✓ 旋挖钻机的大修,项修及维护； ✓ 液压系统的维修和故障排除； ✓ 电路系统的维修和故障排除；  
 ✓ 发动机的大修和故障排除； ✓ 减速机及液压马达的维修,更换及改装；

Jietaihaoli specialized in rotary piling rig maintenance and aftersales service,own professional maintenace team,15 years abundant experience.We can maintain piling rig machine inculde abroad brand IMT ,Soilmec,Bauer,Mait, Casagrande,and home brand SANY,XCMG,CRRC,Zoomlion,Sunward etc.

Maintenance Projects Inculde:

- ✓ Rotary piling rig overhaul,repair and maintenance items;
- ✓ Hydraulic systems mainenance and troubleshooting;
- ✓ Circuit system maintance and troubleshooting;
- ✓ Engine overhaul and troubleshooting;
- ✓ Maintenance ,replacement and modification of gearbox and motors.



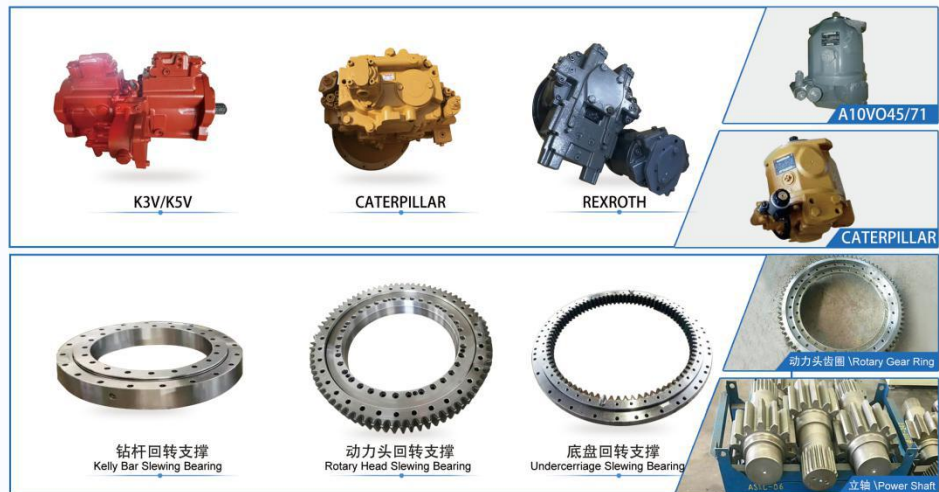
马达系列  
Hydraulic Motor Series



结构件  
Structural Parts



液泵 & 回转支撑  
Hydraulic Pump & Slewing Bearing



减速机系列  
Gearbox Series



电器类  
Electric Parts



底盘件  
Undercarriage Parts



阀组  
Valves



旋挖截齿  
Drilling Teeth

产品特点  
PRODUCT FEATURES

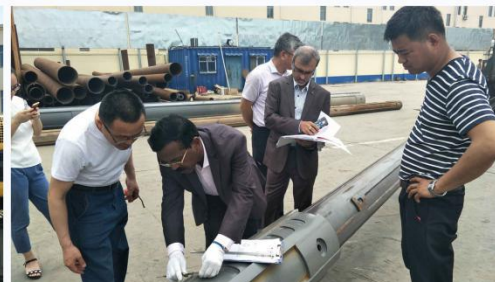
截齿使用高质量的合金钢以及碳化钨为原料，采用先进的钎焊工艺生产高质量，高耐磨以及使用寿命长的器具。我们可以根据顾客的需求生产各种截齿，挖沟齿以及斗齿。

用途：旋挖钻机，挖煤，采矿，石油开采，挖井，路面施工。  
适用岩层：沙土层，砾石和中硬岩石等。

Drilling Bullet bit use high grade alloy steel and tungsten carbide tip and adopt advanced brazing technology to produce high quality, high wear resistance, long life cutters. We also can produce all kind of rotary bits, trenching bit and flat bit according to customers' requirements.

Usage: Drilling rig, Coal cutting, Mining, Oil drilling, Well dig, Road Milling etc.  
Applicable layers: dense sand, gravel and medium hard rocks, etc.





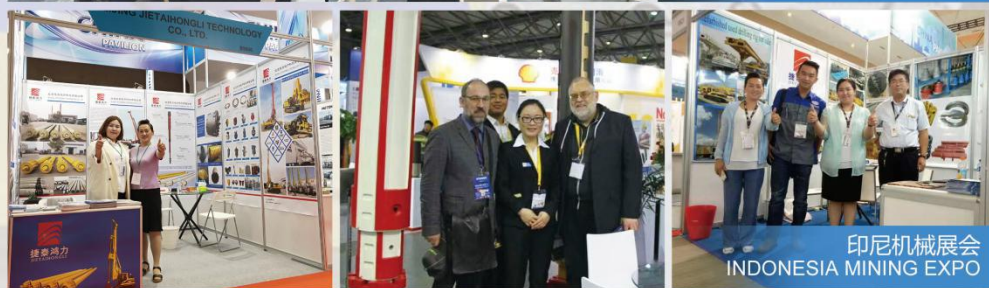
Customers from Germany, America, India, Turkey, Russia, Indonesia, Colombia, Brazil, Southeast Asia, etc visited factory inspected Kelly bars and refurbished drilling rig, high quality and professional technology got high praise.

来自德国、美国、印度、土耳其、俄罗斯、印度尼西亚、哥伦比亚、巴西、及东南亚的客户来场验收钻杆及再制造钻机，高品质和专业技术得到客户一致好评。



公司拥有专业的技术团队和销售团队,具有丰富的实战经验和理论知识,公司本着“以客户为本”的原则,用一流的管理,先进的制造工艺,专业的维修技术和售后服务体系,全方位为旋挖钻机客户提供钻机维修、技术咨询、钻杆维修、施工经验,赢得客户的信赖和支持。公司竭诚与国内外旋挖钻机客户成为最佳合作伙伴!

Jietaihaoli own professional technical team and sales team, has a wealth of practical experience and theoretical knowledge, with the principle of "Customer-orientede", with first-class management, advanced manufacturing technology, professional maintenance technology and after-sales service system,support for customers with rotating drill rig maintenance, technical consulting, drill pipe maintenance and construction experience, win customers' trust and support. We sinceley hope to be the best partner with home and abroad client engaged in rotary piling rig field.





江苏意马 220 施工现场  
Jiangsu IMT AF220 piling worksite



广西三一 405 施工现场  
Guangxi SANY SR405 piling worksite



新加坡宝峨施工现场  
Singapore burocr rig piling worksite



柬埔寨土力 R615 施工现场  
Cambodia soiltec R615 piling worksite



埃及土力钻机施工现场  
Turkey Soiltec Piling Rig Worksite



哈萨克斯坦山河 SD10 钻机施工现场  
Kazakhstan shanhe SD10 piling worksite



济南东站长车 280 施工现场  
Jinan east station TeC280 piling worksite



京秦高速南车 200 施工现场  
Jingqin high speed TCCM14200 piling worksite



京唐高铁金泰 SD36 施工现场  
Jingtang high-speed rail Jin Tai SD36 piling worksite



捷泰豪力  
JIETAI HAOLI



越南徐工 260 施工现场  
Vietnam XCMG X260 piling worksite



青岛徐工 400 施工现场  
Qingdao XCMG XR400 piling worksite



印度卡萨 B250 施工现场  
India casagrande B250 piling worksite



印尼利勃海尔 LB36 施工现场  
Indonesia liebherr LB36 piling worksite

JTHL Kelly bar matched different brand drilling rig at project site in China and overseas, by virtue of its high efficient, durability, longer working life, which has won unanimous praise. Especially the refurbished drilling rig, good working condition with cheaper price, the best choice for project site.

捷泰豪力钻杆配套各品牌钻机在国内外施工现场, 凭高效, 耐用等优势, 赢得客户的一致好评, 尤其再制造旋挖钻机, 质优价廉, 是客户的施工首选。



如需更多信息, 请关注我们:

For more information, please follow us:

[www.chinajthl.com](http://www.chinajthl.com) <http://chinajthl.en.alibaba.com> <http://www.chinakellybar.net/>

我们始终致力于提供更快捷, 更可靠, 更满意的服务

We are always committed to providing faster, more reliable and more satisfying services.



捷泰豪力  
JIETAI HAOLI

如需协助, 请联系我们:

For assistance, please contact with us.:

☎ 010-87617688 / 0536-5898001

✉ haoronghui@chinajthl.com

