



**徐州启洋机械有限公司**  
Xuzhou Qiyang Machinery Co., Ltd.,



## 目录

## Contents

公司简介.....01	倾斜斗.....11
Company introduction	Tilt bucket series
生产设备.....03	液压剪.....13
Production equipment	Hydraulic shear series
铲斗系列.....05	液压粉碎机.....15
Bucket series	Pulverizer series
机械抓木器.....07	液压爪.....17
Mechanical grab series	Hydraulic grab series
快速连接器.....09	液压锯.....19
Quick coupler series	Hydraulic Saw series
液压拇指斗.....10	
Hydraulic thumb bucket series	

## 公司简介 Company introduction

徐州启洋机械有限公司成立于2013年，是一家新兴的工程机械研发生产企业。公司位于中国工程机械基地江苏省徐州市，是徐工集团、辽宁恒力集团等众多大型企业的长期合作伙伴。公司本着以客户为中心、以市场为导向的思想，坚守质量、不断创新。我们坚信产品质量是企业生存的根本，所以我们坚持产品质量一直放在每一个生产环节的第一位；我们坚信客户的需求就是我们努力的方向，所以我们坚持产品设计永远以客户的使用为中心；我们坚信市场的口碑是对企业最大的肯定，所以我们坚持做好对每一台产品跟踪服务。

我们愿意成为您最可信赖的长期合作伙伴！

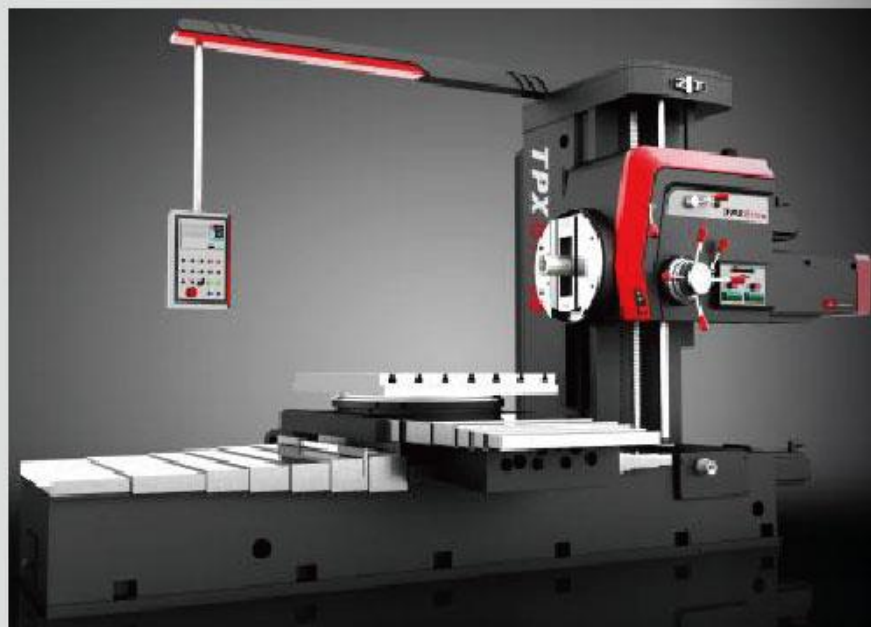
Xuzhou Qiyang Machinery Co., Ltd., founded in 2013 is an emerging enterprise professional in developing and manufacturing machinery equipment used in project. Company is located in the base of Chinese Construction Machinery: Xuzhou, Jiangsu Province. Besides, it has the long term cooperation with many large-size enterprises like XCMG and Liaoning Hengli Group. With Customer-centered and Market-oriented idea, company sticks to quality and keeps innovation. We believe product quality is the base for enterprise's existence, thus we always put product quality at the first place in every production link; we believe customer demands are our target direction, thus we persist in designing products always with customer's practical use centered; we believe market reputation is the largest recognition, we adhere to provide better after-sale tracking serve for every product.

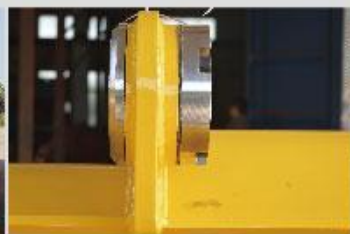
We are willing to be the most reliable long-term partner for you!





 **生产设备**  
Production equipment





 铲斗系列  
Bucket Series





# 机械抓木器

## Mechanical Grab Series

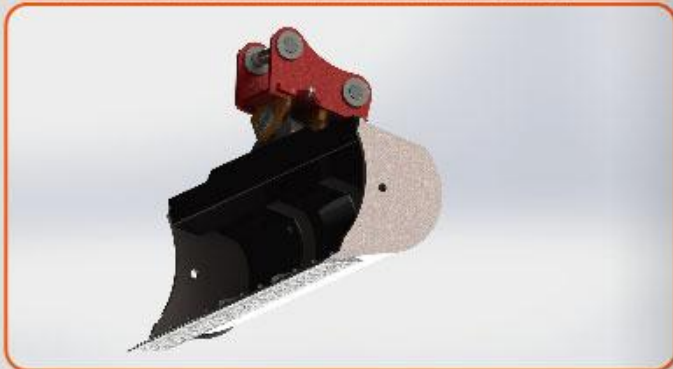
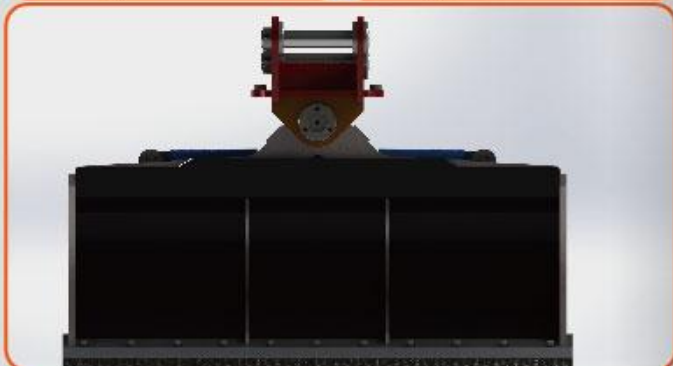






## 倾斜斗

## Tilt Bucket Series



## Technical Specifications:

Excavator Weight (Tons)	Model	Width in (mm)	Heaped Capacity m <sup>3</sup> (yd <sup>3</sup> )	Weight kg (lbs)
2-4	AT04R-1200	48 (1200)	0.18 (0.24)	176 (388)
	AT04R-1350	54 (1350)	0.20 (0.26)	187 (413)
	AT04R-1500	60 (1500)	0.22 (0.29)	198 (436)
4-6	AT06R-1200	48 (1200)	0.22 (0.29)	220 (485)
	AT06R-1350	54 (1350)	0.25 (0.33)	250 (551)
	AT06R-1500	60 (1500)	0.28 (0.37)	280 (618)
6-11	AT11R-1200	1200 (48)	0.28 (0.37)	377 (831)
	AT11R-1500	1500 (60)	0.36 (0.47)	428 (943)
	AT11R-1700	1700 (66)	0.48 (0.52)	452 (996)
	AT11R-1800	1800 (72)	0.44 (0.58)	478 (1053)
11-14	AT14R-1500	1500 (60)	0.48 (0.63)	785 (1730)
	AT14R-1800	1800 (72)	0.57 (0.75)	663 (1461)
	AT14R-2000	2000 (79)	0.64 (0.84)	848 (1868)
18-25	AT18R-1500	1500 (60)	0.63 (0.82)	705 (1553)
	AT18R-1800	1800 (72)	0.57 (0.75)	817 (1800)
	AT25R-1500	1500 (60)	0.85 (1.11)	743 (1637)
25-29	AT25R-1800	1800 (72)	0.80 (1.05)	753 (1659)
	AT25R-2000	2000 (79)	0.93 (1.22)	818 (1802)
	AT29R-1800	1800 (72)	1.31 (1.71)	923 (2034)
25-29	AT29R-2000	2000 (79)	1.05 (1.37)	908 (2001)
	AT29R-2100	2100 (84)	1.22 (1.60)	919 (2025)



# 液压剪

## Hydraulic Shear Series



## Technical Specifications:

	S385C	S365C	S340B	S325B	S320B	S305
Weight*, boom-mount	kg (lb)	8,320 (18,345)	6,870 (15,145)	4695 (10,351)	3,390 (7,474)	2,570 (5,666)
Weight*, stick-mount	kg (lb)	7,975 (17,580)	6,700 (14,770)	4386 (9,670)	2,996 (6,604)	2,165 (4,774)
Dimensions						
A Length	mm (in)	4,260 (168)	3,840 (151)	3,638 (143)	3,177 (125)	2,792 (110)
B Height	mm (in)	2,121 (84)	1,900 (75)	1,723 (68)	1,525 (60)	1,340 (53)
C Width	mm (in)	1,400 (55)	1,180 (46)	975 (38)	792 (31)	792 (31)
Jaw Width, fixed	mm (in)	466 (18)	466 (18)	396 (16)	342 (13)	304 (12)
Jaw Width, moving	mm (in)	150 (6)	150 (6)	120 (5)	100 (4)	90 (3)
D Jaw Opening	mm (in)	879 (35)	845 (33)	563 (22)	528 (21)	409 (16)
E Jaw Depth	mm (in)	903 (35)	840 (33)	703 (28)	571 (22)	459 (18)
Shear Forces †						
Throat**	kN (st)	12,509 (1,405)	10,342 (1,162)	6,818 (766)	5,562 (625)	3,706 (417)
Apex	kN (st)	4,696 (528)	3,754 (422)	2,751 (309)	2,221 (250)	1,583 (178)
Tip	kN (st)	2,481 (279)	2,008 (226)	1,558 (175)	1,274 (143)	892 (100)
Shear Arm Torque	kN·m (ft·lb)	2,779 (2,050,000)	2,083 (1,536,000)	1,374 (1,013,700)	931 (686,900)	534 (394,100)
Cycle Time, open	seconds	5	5	5	5	4
Cycle Time, close	seconds	3	3	3	3	2.5
Hydraulic Requirements, Cutting Circuit						
Maximum relief pressure	kPa (psi)	35,000 (5,075)	35,000 (5,075)	35,000 (5,075)	35,000 (5,075)	35,000 (5,075)
Recommended flow	L/min. (gpm)	690 (182)	530 (140)	300 (79)	200 (53)	150 (40)
Hydraulic Requirements, Rotation Circuit						
Maximum relief pressure	kPa (psi)	14,000 (2,030)	14,000 (2,030)	14,000 (2,030)	14,000 (2,030)	10,000 (1,450)
Maximum Recommended flow	L/min. (gpm)	80 (21)	80 (21)	40 (11)	40 (11)	20 (5)

\*Weight includes mounting bracket.

\*\*Measure at maximum cutting point of the jaw.

† Calculated with a maximum operating pressure of 35 MPa (5,075 psi).





## 液压粉碎机

## Pulverizer Series



## Technical Specifications:

		P215	P225	P235
Recommended carrier weight, stick-mounted	T (lb)	15-25 (33,069-55,115)	25-35 (55,115-77,162)	35-60 (77,162-132,277)
Weight*	kg (lb)	1,683 (3,710)	2,480 (5,467)	3,421 (7,542)
Length	mm (in)	2,414 (95.04)	2,615 (102.95)	3046 (119.92)
Height	mm (in)	1,372 (54.01)	1678(66.06)	1953 (76.89)
Width	mm (in)	580 (22.83)	624(24.57)	708 (27.87)
Jaw width, fixed	mm (in)	440 (17.32)	500(19.68)	580 (22.83)
Jaw width, moving	mm (in)	340 (13.39)	360(14.17)	420 (16.54)
Jaw depth	mm (in)	722 (28.43)	899 (35.39)	1103 (43.43)
Jaw opening	mm (in)	838 (32.99)	1018 (40.08)	1214 (47.80)
Cutter length	mm (in)	200 (7.87)	260 (10.24)	260 (10.24)

### Crushing force

At ripping tooth	t (st)	66 (73)	97 (107)	120 (132)
At tooth tip	t (st)	119 (131)	174 (192)	190 (209)

### Cutting force

At primary cutter	t (st)	230 (254)	331 (365)	393 (433)
-------------------	--------	-----------	-----------	-----------

### Crushing capacity

Concrete thickness	mm (in)	650(25.59)	750 (29.53)	900 (35.43)
--------------------	---------	------------	-------------	-------------



# 液压爪

## Hydraulic Grab Series

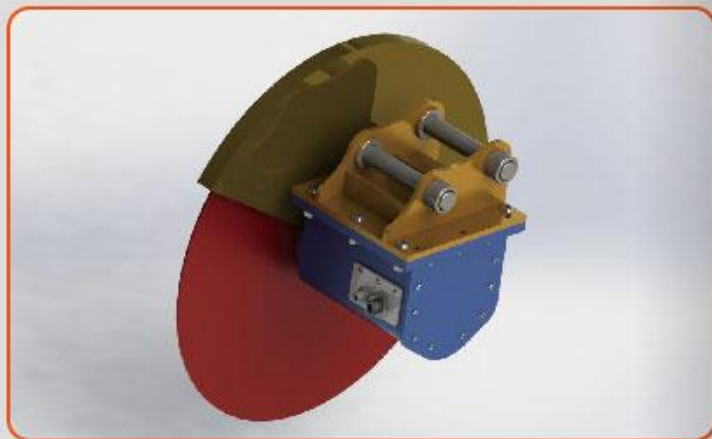


## Technical Specifications:

Cat carrier match*	G310B	G315B	G320B	G325B	G330
	311 - 316 M313 - M316	318 - 321 M315 - M322	324 - 329 330 - 385 UHD Apex 70 - 100	324 - 336 330 - 385 UHD Apex 70 - 100	329 - 349 Apex 70 - 100
<b>Recommended carrier weight range</b>					
Minimum	t (lb)	15 (33,000)	20 (44,000)	25 (55,000)	30 (66,000)
Maximum	t (lb)	22 (48,500)	29 (63,900)	38 (83,700)	45 (99,200)
<b>Specifications</b>					
Capacity	L (yd <sup>3</sup> )	375 (0.49)	550 (0.72)	750 (0.98)	850 (1.11)
Weight**	kg (lb)	1,030 (2,266)	1,400 (3,080)	1,875 (4,125)	2,120 (4,664)
Closing Force	kN (st)	36 (1.42)	52 (2.05)	66 (2.60)	66 (2.60)
Cycle Time	seconds	3.2	3.3	3.5	3.3
<b>Dimensions</b>					
A Height, open	mm (in)	1,359 (53.50)	1,462 (57.56)	1,606 (63.23)	1,620 (63.78)
B Height, closed	mm (in)	1,440 (56.69)	1,550 (61.02)	1,725 (67.91)	1,835 (72.2)
C Width, closed	mm (in)	1,245 (49.02)	1,375 (54.13)	1,540 (60.63)	1,515 (59.6)
D Width, open	mm (in)	1,800 (70.87)	2,000 (78.74)	2,200 (86.61)	2,270 (89.4)
E Width	mm (in)	850 (33.46)	1,000 (39.37)	1,100 (43.31)	1,350 (53.15)
F Height	mm (in)	520 (20.47)	570 (22.44)	625 (24.61)	650 (25.6)

\* Contact your local Cat dealer to choose the right grab for your machine's configuration.  
 \*\* Includes mounting bracket.

## 液 压 锯 Hydraulic Saw Series



Model		RS2	RS3	RS4
Excavator Range	tonnes	1-6	5-12	12-20
Blade dia. Range	mm	400-700	600-1000	600-1400
Output Power - Continuous	kW	30	140	280
Spindle Torque - Continuous	Nm	135	480	787
Pressure - Continuous	MPa	21	28	31.5
Spindle Speed - Continuous	rpm	1750	2857	2990
Flow Continuous	l/min	105	200	403
Blade Rotation Reversible		yes	yes	yes
Case Drain required		yes	yes	yes
Brake		yes	yes	yes
Cutting Depth Loss	mm	75	120	150
Mass	kg	57	155	240
Trench Width - Minimum	mm	290	390	480
Price (*note)	RMB	8500	23000	65000
Pre assembled saw blade size	mm	700	1000	1400