

深耕于破碎锤行业的发展，
着力打造“韩运”液压锤品牌！

DEEPLY DEDICATED IN THE DEVELOPMENT OF BREAKER INDUSTRY,
FOCUSING ON BUILDING “HANYUN” HYDRAULIC BREAKER HAMMER BRAND!



本册中照片以实际销售中产品为准，
如有变动，恕不另行通知。
Pictures in the brochure just for reference,
details see the real products.



韩运液压破碎器

HY HYDRAULIC BREAKER

BRIEF INTRODUCTION ON HANYUN:

Established in 2011, located at No. 167 Xuchang Road, Shangjie District, Zhengzhou City, Hanyun has a registered capital of 20 million yuan, more than 180 employees, a total enterprise asset of more than 200 million yuan, standardized workshops of 25,000 square meters, and more than 100 sets of advanced high-end precision machining equipment imported from Europe, Japan and South Korea, which have first-class precision machining, heat treatment and product testing capabilities in domestic market.

Since its establishment, Hanyun has always been deeply involved in the development of hydraulic breaker industry, and strives to build the hydraulic hammer brand "Hanyun". The company now has an annual production capacity of 5,000 sets of hydraulic hammers, 100,000 hydraulic breaker chisels, 30,000 sets of front and back heads, and 20,000 sets of breaker shells. The company has a complete sales and service system. Hanyun brand hydraulic hammer is characterized by "stable performance, strong striking force and high efficiency", and its comprehensive performance is much higher than similar products. With complete models of breaker spare parts manufacturing, Hanyun has become the main supporting supplier of many well-known brand hydraulic hammer manufacturers at home and abroad. The products are widely used in large-scale mines and municipal projects, and are receiving good feedback from customers.

Standing at the new historical starting point, always adhering to the development concept of "Technology-based, continuous innovation", sticking to the business philosophy of "market guidance, scale leading to success", with the goal of "improving quality and perfecting service", Hanyun people strives to forge ahead, create a win-win situation and promote the development of large-scale hydraulic breaker industry in China

郑州韩运工程机械有限公司简介:

郑州韩运工程机械有限公司成立于2011年，公司位于郑州市上街区许昌路167号。公司注册资本2000万元，现有员工180余人，企业总资产2亿余元，拥有标准化厂房25000平米，拥有欧洲、日韩进口设备和国产先进高端精密机械加工设备100余台套，具有很强的精密加工、热处理和产品测试能力。

公司自成立以来，始终深耕于破碎锤行业的发展，历经十余年的奋发努力，着力打造“韩运”液压锤品牌。公司现已具备年产液压锤整机5000台套，钎杆10万支，上下缸体3万台套，外壳2万台套的生产能力。韩运品牌液压锤以“性能稳定，打击力强，效率高”的特点，综合性能远高于同类产品。公司拥有完整的销售和服务体系，产品广泛用于国内外大型矿山和市政工程中，深受广大客户的一致好评。公司生产的破碎锤配件以超高的性价比，倍受国内外用户的青睐，破碎锤配件已成为国内外众多知名品牌液压锤生产厂家的主要供应商和配套商。

站在公司发展的历史新起点，韩运人始终秉承“科技立企、持续创新”的发展理念；坚持“市场引导、规模制胜”的经营理念，不断提升产品品质，完善产品的售后服务。





25000m²
标准化厂房
STANDARDIZED PLANT

韩运厂区实拍图

PHOTO OF HANYUN PLANT

规模**庞大**，实力**雄厚**！
Huge scale, powerful strength!



韩运厂区实拍图

PHOTO OF HANYUN PLANT



科技立企 持续创新
SCIENCE AND TECHNOLOGY ENTERPRISES
CONTINUOUS INNOVATION

韩运厂区实拍图

PHOTO OF HANYUN PLANT



韩运液压破碎器

HY HYDRAULIC BREAKER

公司现已具备年产液压锤整机5000台套，钎杆10万支，
上下缸体3万台套，外壳2万台套的生产能力。

Hanyun has an annual production capacity of 5000 sets complete hydraulic breaker hammers, 100,000 pieces chisels, 30,000 sets front and back head bodies and 20,000 sets hydraulic breaker shells.



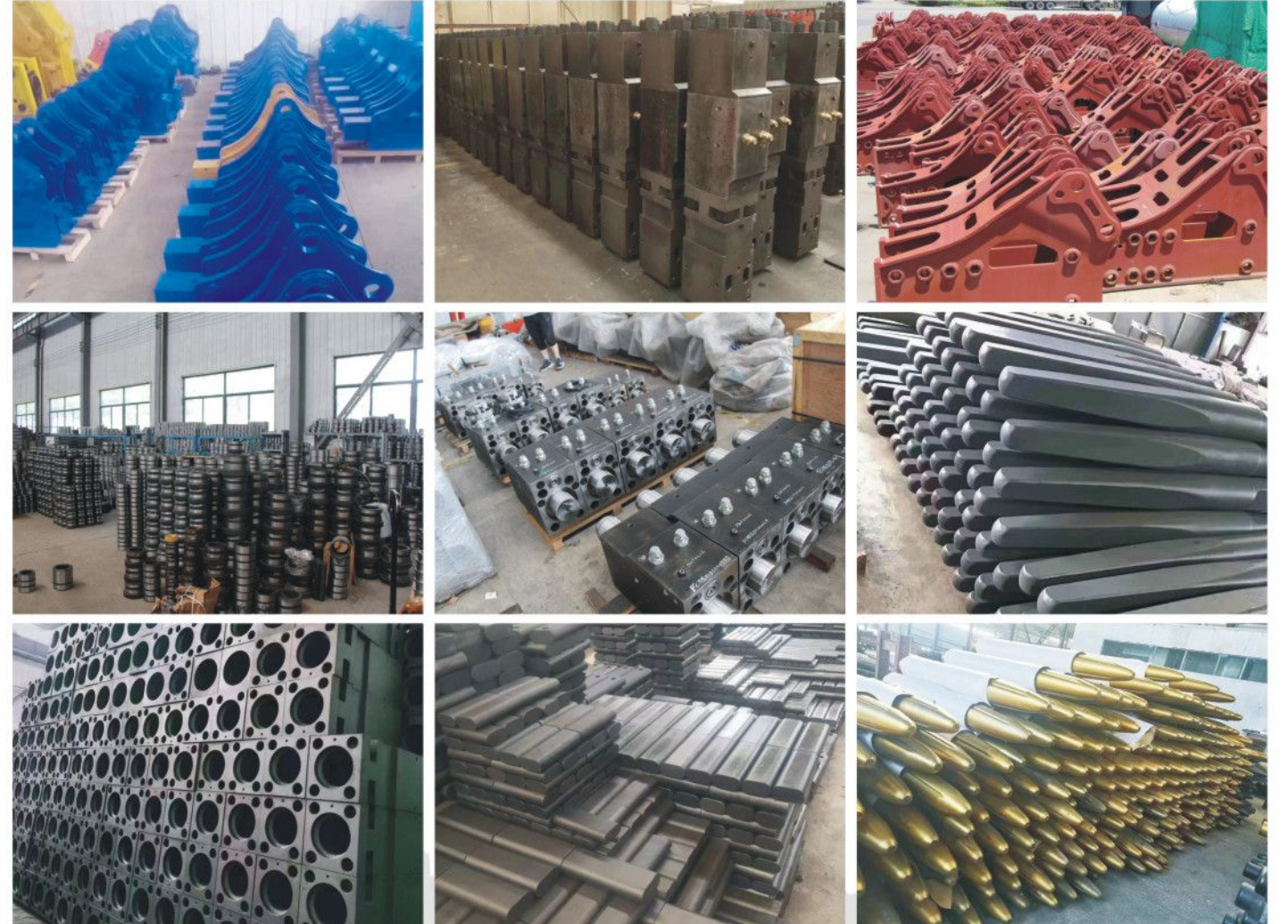
库房及加工区域实拍图

ACTUAL PICTURES OF WAREHOUSE AND PROCESSING AREA



有品质才有市场，有改善才有进步；
只有提供优质的产品，才是回报客户最好的方法。

QUALITY IS THE MARKET, IMPROVEMENT LEADS TO PROGRESS
PROVIDING HIGH-QUALITY PRODUCTS IS THE BEST WAY TO RETURN CUSTOMERS.



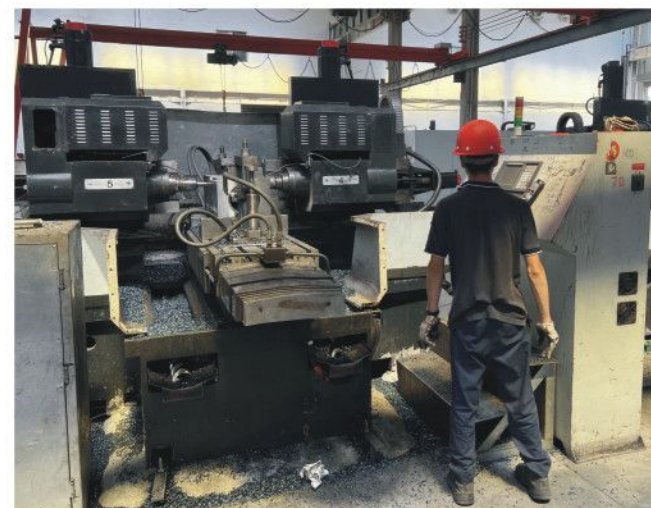
高端数控加工

HIGH-END CNC processing



高端数控加工

HIGH-END CNC processing



多用炉热处理

Multi-purpose furnace heat treatment



静音直锤

Box Type Silenced Hydraulic Breaker



品质
Quality

—品质为本 质量决定价值—

塔式直锤

Top Type Hydraulic Breaker



创新
Innovate
—开拓创新 引领发展的第一动力—

三角锤

Side Type Hydraulic Breaker



共赢
Win-win

—合作共赢 团结合作共创未来—

HY 韩运液压破碎器
HY HYDRAULIC BREAKER

破碎锤技术规格

TECHNICAL SPECIFICATION OF HYDRAULIC BREAKER

规格 SPECIFICATIONS		名称 NAME	HY400	HY450	HY530	HY680	HY750	HY850	HY1000	HY1200	HY1250	HY1350	HY1400
总重量 TOTAL WEIGHT	三角型 TRIANGULAR TYPE	kg	70	95	158	263	334	493	736	1374	1484	1653	1774
	直型 SIDE TOP	kg	72	95	158	343	409	591	880	1420	1587	1847	2059
	静音型 SILENCE	kg	102	129	180	361	450	648	917	1358	1415	1893	2011
钎杆直径 DIAMETER OF TOOL	mm	40	45	53	68	75	85	100	120	125	135	140	
钎杆重量 WEIGHT OF TOOL	kg	4	8	9	18	22	29	57	89	94	115	135	
液压油压力 OPERATING PRESSURE	bar	90-120	90-120	90-120	110-140	120-150	130-160	150-170	150-170	150-170	160-180	160-180	
液压油流量 HYDRAULIC FLOW RANGE	l/min	15-25	20-30	25-50	40-70	50-90	60-100	80-110	90-120	90-120	130-150	120-180	
打击频率 IMPACT FREQUENCY	bpm	800-1400	700-1200	600-1100	500-900	400-800	400-800	350-700	350-650	350-650	400-600	350-500	
配用车重 SUITABLE CARRIER	ton	0.8-2.5	1.2-3.0	2.5-4.5	4-7	6-9	7-14	10-15	15-18	15-18	18-26	18-26	

破碎锤技术规格

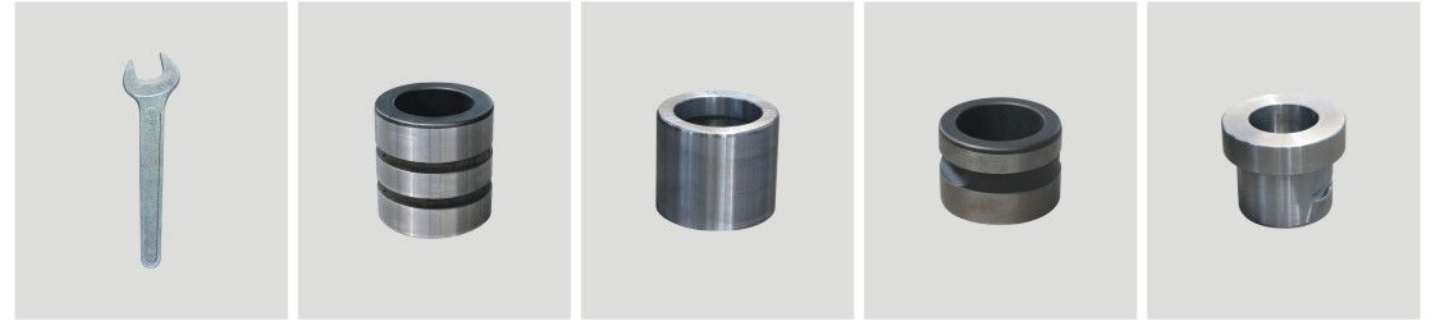
TECHNICAL SPECIFICATION OF HYDRAULIC BREAKER

规格 SPECIFICATIONS		名称 NAME	HY1500	HY1550	HY1600	HY1650A	HY1650B	HY1750	HY1850	HY1950	HY2000	HY2050	HY2100	HY2300
总重量 TOTAL WEIGHT	三角型 TRIANGULAR TYPE	kg	2281	2577	3075	2751	3277	3905	4365	4841	5800	6623	7300	8000
	直型 SIDE TOP	kg	2380	2745	3007	3156	3447	4057	4844	5374	--	--	--	--
	静音型 SILENCE	kg	2457	2968	2791	2916	2925	3902	--	--	--	--	--	--
钎杆直径 DIAMETER OF TOOL	mm	150	155	160	165	165	175	185	195	200	205	210	230	
钎杆重量 WEIGHT OF TOOL	kg	164	183	200	224	215	247	269	302	321	340	362	465	
液压油压力 OPERATING PRESSURE	bar	160-180	160-180	160-180	160-180	170-200	260-270	270-280	270-280	270-280	270-280	270-280	280-290	280-290
液压油流量 HYDRAULIC FLOW RANGE	l/min	150-190	180-240	200-260	200-260	200-260	250-300	220-290	250-320	250-320	250-320	250-320	280-350	310-380
打击频率 IMPACT FREQUENCY	bpm	350-700	300-450	250-400	250-400	250-400	200-300	150-250	150-250	150-250	150-250	150-250	100-200	100-200
配用车重 SUITABLE CARRIER	ton	27-35	28-35	30-40	30-40	30-40	45-50	45-50	50-60	50-60	55-65	65-75	70-80	

破碎锤配件 HYDRAULIC BREAKER SPARE PARTS



HYDRAULIC BREAKER SPARE PARTS **破碎锤配件**



各种规格/型号破碎锤钎杆

DIFFERENT HYDRAULIC BREAKER CHISELS WITH DIFFERENT MODELS



Wedge Type



Blunt Type



Blunt Type



Cone Type



Moil Type



Shovel Type



应用领域 Application Area

市政工程Municipal Engineering :

混凝土破碎、水、电、气工程施工、旧城改造
Concrete crushing, water, electricity and gas engineering construction, old city reconstruction

公路Highway :

高速公路补修、水泥路面破碎、基础开挖
Highway repair, cement pavement breaking, foundation excavation

铁路Railway :

开山、隧道掘进、道路拆毁、路基夯实
Mountain excavation, tunnel excavation, road demolition, subgrade compaction

建筑Architecture :

旧建筑拆除、钢筋混凝土破碎
Demolition of old buildings and crushing of reinforced concrete

冶金Metallurgy :

钢包、炉渣清理、拆炉解体、设备基础拆除
Ladle and slag cleaning, furnace dismantling and disassembly, and equipment foundation demolition

其他Other :

破冰、破冻土、砂型振捣
Ice breaking, frozen soil breaking, sand mold vibration

船舶修造Ship repair :

船体除蚌、除锈
Clam and rust removal of hull

贯穿螺栓 (Through bolt)

破碎器本体的前部主体，油缸和后部主体是由4个贯穿螺栓来固定的。
Front head, cylinder and back head of hydraulic breakers are fixed by 4 through bolts.

换向阀总成 (Cross valve unit)

换向阀在机体里，用于控制活塞的往返。
The reversing valve is in the body and is used to control the return of the piston.

蓄能器 (Accumulator)

蓄能器用以补偿液压回路中的压力及防止震动，只能使用氮气，无需经常补充。
The accumulator is used to compensate the pressure in the hydraulic circuit and prevent vibration, only nitrogen gas can be used, it doesn't need to be replenished often.

后缸体 (Back head)

内有充气阀里面充有氮气。
There is an inflation valve inside, which is filled with nitrogen.

活塞 (Piston)

活塞的动能被转换成冲击能量，传送到钎杆以破碎岩石。
The kinetic energy of the piston is converted into impact energy, which is transmitted to the chisel to break rocks.

中缸体 (Middle cylinder)

中缸体内有控制活塞往复运动及其行程的油路，中缸体是破碎器的心脏。
There is an oil circuit in the middle cylinder that controls the reciprocating motion of the piston and its stroke. The middle cylinder is the heart of the breaker.

前缸体 (Front head)

前缸体支撑着整个破碎器，推力环和推力轴套用以承受来自钎头的冲击。
The front head supports the entire hydraulic breaker, the thrust ring and thrust bushing are used to withstand the impact from the chisel.

钎杆衬套 (Chisel bushing)

钎杆销 (Tool pin)

钎杆 (Chisel)

根据应用情况可使用十字型模型和平头型的钎杆。
Wedge head/ flat head/ point head chisels could be used according to situation.

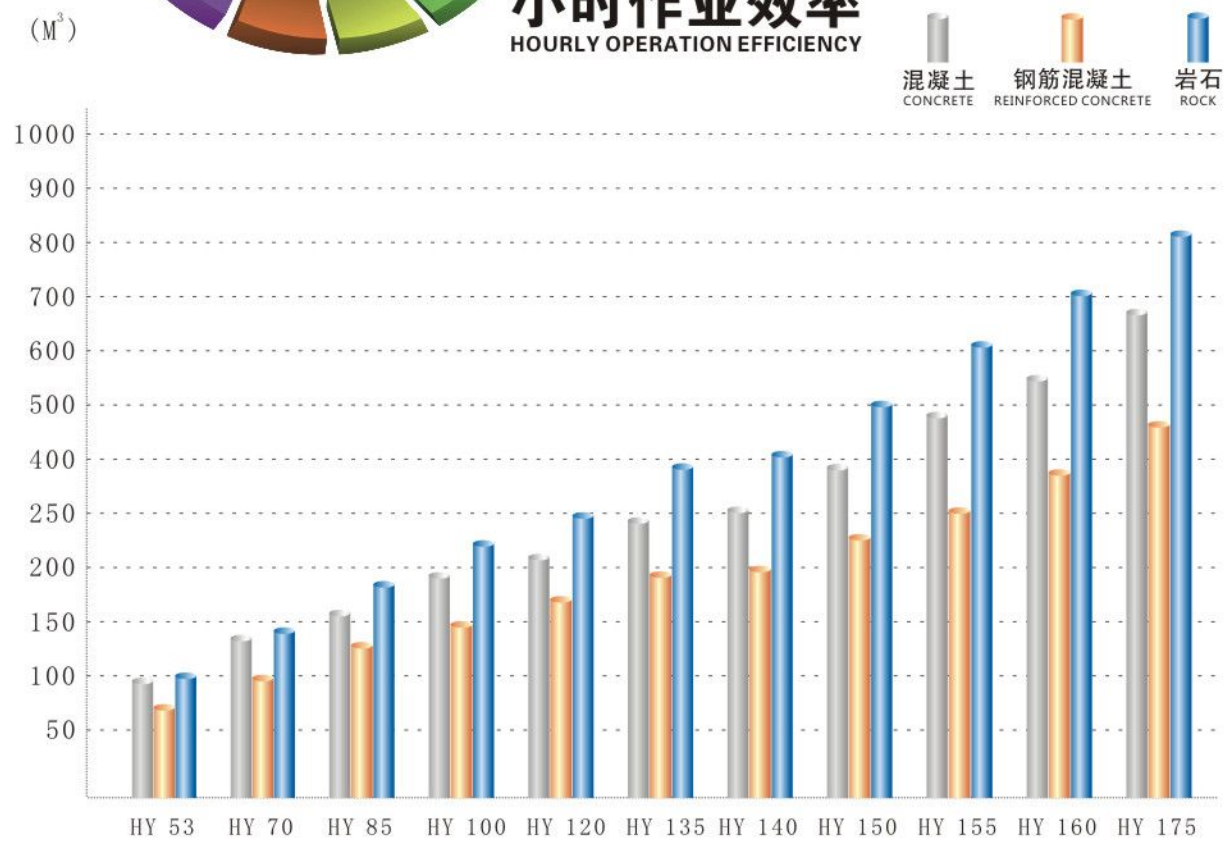
A perfect display of professional breaking!

- ★ Strong "hydraulic pressure+nitrogen gas" impacting system.
- ★ Design of impacting capacity reinforced structure.
- ★ Adjustable flow device.
- ★ Special precision processing is used when manufacturing.



小时作业效率

HOURLY OPERATION EFFICIENCY



超长工作时间 超高工作效率

ULTRA LONG WORKING HOURS AND HIGH EFFICIENCY





韩运液压破碎器
HY HYDRAULIC BREAKER

公司邮箱(Company email) :

hanyun@hydraulicbreakerhammers.com

公司网址(Company website) :

<https://www.hydraulicbreakerhammers.com/>