

公司简介

精拓轴承是一家集研发、生产、贸易为一体的现代化科技型企业，公司是中国汽车工业协会会员，中国轴承工业协会会员，国家高新技术企业，河北省专精特新企业，河北省轴承协会理事单位，公司总经理吴士震是馆陶县政协常委。公司成立以来一直致力于制造优质高精度轴承，可生产质量等级为P0/P6/P5,(Z1V1) (Z2V2) (Z3V3)，注册品牌：JITO，并在欧盟注册。公司通过ISO9001：2015和IATF/16949:2016体系认证，拥有发明专利和新型实用专利数十项。公司先后被河北省企业信用促进会，河北省企业信用研究院评为“河北省守合同重信用企业”，河北省科技厅厅评为“河北省科技型中小企业”，等荣誉并颁发证书。公司拥有两个厂区，粗加工、热处理厂区和精加工、装配、仓储厂区，科研楼等建筑面积30000余平方米。

JITO产品广泛用于小型汽车、客车、货车、工程车辆、农业机械、造纸、发电、矿山、冶金、机床、石油、铁路等领域。为了向客户提供更好的服务和方便客户前来洽谈合作，我公司在山东省聊城市成立了办事处，公司交通十分便利，距聊城高铁站15分钟，距济南遥墙国际机场1个小时。公司拥有优秀的销售团队和研发团队，使JITO轴承成为行业内的知名品牌。

为提高企业知名度，我公司每年多次赴各国参展宣传，并每届都参加上海国际轴承专业展览会、中国进出口商品交易会、北京国际汽车展览会、上海法兰克福汽配展会等。

我们拥有完整的产业链，从生产的各个环节严格把关，从下料、车加工到热处理，从磨加工到装配，从清洗涂油到包装等，每道工序的操作都一丝不苟，产品在生产过程中，经过自检，循环，抽检，全检等严格的质量检测检验。各项性能均达到国际标准。同时公司设立了先进的研发和检测中心，引进了先进的检测仪器：三坐标，测长仪，光谱仪，轮廓仪，圆度仪，振动仪，硬度仪，金相分析仪，轴承疲劳寿命试验机等各种测量仪器。对产品的质量进行全程监控，全面检验产品的综合性能，确保JITO产品零缺陷。我们的产品已和多家国内外主机厂配套，目前产品还出口欧洲、南美、北美、东南亚、中东、非洲近30个国家。

JITO轴承以高寿命、高精度、高性能赢得了广大客户的信赖，我们也将再接再厉为客户创造更多的价值和财富。携手精拓，共创美好明天！

COMPANY BRIEF

JITO Bearing is a modern scientific and technological enterprise integrating research and development, producing and trading. The company is a member of China Association of Automobile Manufacturers, a member of China Bearing Industry Association, a national high-tech enterprise, a specialized, refined and new enterprise in Hebei Province, and a director unit of Hebei Bearing Association. The general manager Shizhen Wu is the standing committee of the political consultative conference of guantao county. Since established, it has been committed to manufacturing high quality and high precision bearings, with the quality level of P0/P6/P5,(Z1V1) (Z2V2) (Z3V3). The registered brand is JITO and also registered in European Union. The company has gained ISO9001:2015 and IATF/16949:2016 system certification, has dozens of invention patents and new utility patents. The

company was awarded "hebei provincial contract-respecting and credit-reliable enterprise" by hebei enterprise credit promotion association and hebei provincial enterprise credit research institute, and "hebei province science and technology SME" by hebei provincial science and technology department, etc. and issued certificate. The company has two factories, the rough processing, heat treatment factory and the finishing, assembly, storage factory, research building, etc. with a construction area of more than 30,000 square meters.

JITO products are widely used in cars, buses, trucks, engineering vehicles, agricultural machinery, paper-making, power-generation, mining, metallurgy, machine tools, petroleum and railway etc. In order to provide better service to customers and be convenient for customers to come to discuss and cooperate, our company established Liaocheng Jingnai Machinery Parts Co.,Ltd in Liaocheng city, Shandong province. The traffic is very convenient, only need 15 minutes from Liaocheng high speed railway station and 1 hour from Jinan yaoqiang international airport. The company has excellent sales team and R & D team, that makes the JITO bearing to be famous brand in the field.

In order to improve the popularity, our company attend many exhibition around the world annually, and we continue to participate in each session of shanghai international bearing professional exhibition, china import and export commodities fair, beijing international automobile exhibition, shanghai frankfurt auto parts exhibition etc.

We have completely production line, and are always strictly controlling each process of production, from raw material making, turning to heat treatment, from grinding to assembly, from cleaning, oiling to packing etc. The operation of each process is very meticulously. In the process of production, through self-inspection, follow inspection, sampling inspection, full inspection, such as strict as quality inspection, it made all the performances reached the international standard. At the same time, the company set up advanced testing center, introduced the most advanced testing instrument: three coordinates, length measuring instrument, spectrometer, profiler, roundnessmeter, vibration meter, hardness meter, metallographic analyzer, bearing fatigue life testing machine and other measuring instruments etc. About the quality of the product to entire prosecution, the comprehensive performance of comprehensive inspection products, ensure JITO to reach the level of zero defect products! Our products have been matched with many domestic and foreign OEM customer, and exported to European Union, south america, north america, southeast asia, the middle East, africa and other 30 countries.

JITO bearing with long life, high precision and high performance won the trust of our customers, we will make persistent efforts to create more value and wealth for customers. Welcome hand in hand with JITO company, to create beautiful tomorrow!





2022



精益求精 · 开拓未来
Keep improving open up the future

JINGNAI MACHINERY



销售部 Sale department

电话/Tel: +86-635-8550888

邮箱/Email: bearing@jito.cc

地址: 山东省聊城市利民西路

Add: Limin west road, liaocheng city.shandong province

工厂 Factory

电话/Tel: +86-13047718888

邮箱/Email: bearing002@jito.cc

地址: 河北省馆陶县精密轴承工业园

Add: precision bearing industrial park, Guantao county, Hebei province

网址/Website: WWW.JITO.CC <https://www.jitobearing.com>

中国·制造
MADE IN CHINA



企业荣誉 ENTERPRISE HONOR



企业资质 ENTERPRISE QUALIFICATION



精/益/求/精·开/拓/未/来

合作共赢 WIN-WIN COOPERATION



KEEP IMPROVING OPEN UP THE FUTURE

厂区展示 THE FACTORY TO SHOW



领导关怀 LEADERSHIP CONCERN



1. 中国轴承工业协会第九届会员大会公司应邀参加。
 2. 省长许勤到我公司展台指导工作。
 3. 市委书记张维亮带领全市观摩团来我公司参观指导。
 4. 副市长王彦清到我公司指导工作。
 5. 市人大主任石磊到我公司指导工作。
 6. 市政协谢继洞主席到我公司指导工作。
 7. 县委书记王立伟到我公司指导工作。
 8. 县长王峰到我公司指导工作。
 9. 县政协王延平主席前往聊城公司指导工作。
1. Our company was invited to attend the 9th General Assembly of China Bearing Industry Association.
 2. The provincial governor Xu Qin came to our company booth to guide work.
 3. Zhang Weiliang, secretary of the municipal party committee, led a city-wide observation group to visit and guide our company.
 4. Deputy Mayor Wang Yanqing came to our company to guide the work.
 5. Shi Lei, director of the Municipal People's Congress, came to our company to guide work
 6. The chairman of the CPPCC Xie Jijong came to our company to guide work.
 7. Wang Liwei, secretary of the county party committee, came to our company to guide the work.
 8. The county magistrate Wang Feng came to our company to guide the work.
 9. The Chairman of the County CPPCC Wang Yanping came to our liaocheng company to guide work.

展会风采 FAIR CHARM



优质轴承供应商 High quality bearing supplier



生产工序 THE PRODUCTION PROCESS



产品展示 PRODUCTS



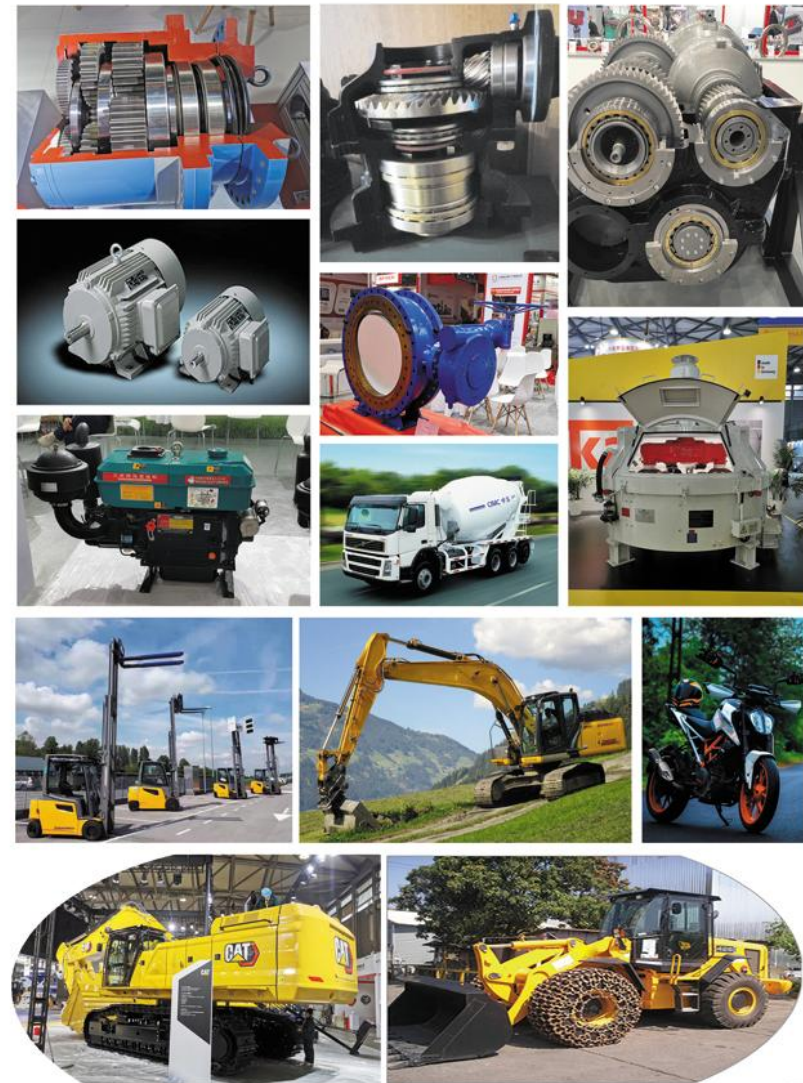
精/益/求/精·开/拓/未/来

KEEP IMPROVING OPEN UP THE FUTURE

产品用途
APPLICATIONS



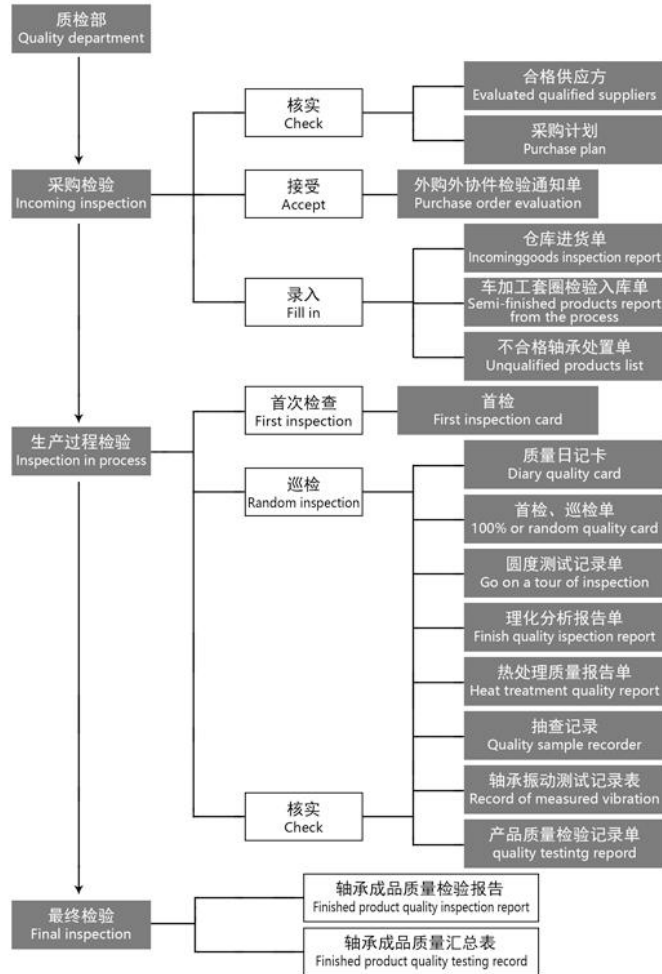
11



12

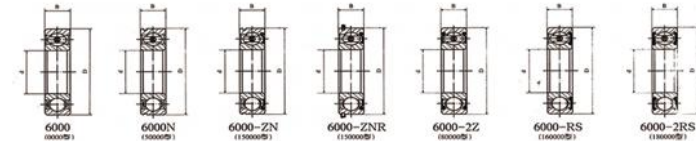
🔴 质量控制流程图

QUALITY CONTROL PROCEEDING



🔴 深沟球轴承

DEEP GROOVE BALL BEARING



轴承型号 Bearing No.	外型尺寸 (mm) Dimensions			额定动负荷 Basic Dynamic Load Rating CR(KN)	额定静负荷 Basic Static Load Rating COR(KN)	重量 Weight (kg)
	d	D	B			
6002	15	32	9	5.85	2.85	0.030
6003	17	35	10	6	3.25	0.04
6004	20	42	12	9.38	5.03	0.068
6005	25	47	12	10.1	5.83	0.079
6006	30	55	13	13.2	8.3	0.113
6007	35	62	14	16.2	10.4	0.149
6008	40	68	15	17.03	11.70	0.184
6009	45	75	16	21.09	14.77	0.230
6010	50	80	16	22.02	16.25	0.257
6011	55	90	18	26.61	20.07	0.383
6012	60	95	18	31.66	24.22	0.382
6013	65	100	18	32.06	24.89	0.410
6014	70	110	20	38.59	30.43	0.576
6015	75	115	20	40.18	33.18	0.622
6016	80	125	22	47.54	39.79	0.822
6017	85	130	22	50.75	42.89	0.892
6018	90	140	24	58.02	49.78	1.013
6019	95	145	24	57.79	50.09	1.156
6020	100	150	24	64.46	56.13	1.620
6021	105	160	26	71.92	63.32	1.520
6022	110	170	28	81.89	72.86	1.691
6024	120	180	28	87.69	79.35	1.990
6026	130	200	33	105.08	96.82	3.073
6028	140	210	33	116.33	108.50	3.14
6030	150	225	35	131.71	124.55	3.74
6032	160	240	38	143.42	137.81	5.30

深沟球轴承

DEEP GROOVE BALL BEARING

轴承型号 Bearing No.	外型尺寸 (mm) Dimensions			额定动负荷 Basic Dynamic Load Rating CR(KN)	额定静负荷 Basic Static Load Rating COR(KN)	重量 Weight (kg)
	d	D	B			
6200	10	30	9	5.1	2.39	0.032
6201	12	32	10	6.8	3.05	0.037
6202	15	35	11	7.8	3.75	0.045
6203	17	40	12	9.56	4.75	0.065
6204	20	47	14	12.7	6.55	0.103
6205	25	52	15	14	7.80	0.127
6206	30	62	16	19.46	11.31	0.202
6207	35	72	17	25.67	15.30	0.285
6208	40	80	18	29.52	18.14	0.365
6209	45	85	19	31.67	20.68	0.405
6210	50	90	20	35.07	23.18	0.465
6211	55	100	21	43.38	29.22	0.592
6212	60	110	22	47.76	32.93	0.788
6213	65	120	23	57.21	40.00	0.948
6214	70	125	24	60.83	45.03	1.070
6215	75	130	25	66.11	49.50	1.185
6216	80	140	26	71.55	54.30	1.405
6217	85	150	28	83.21	63.96	1.780
6218	90	160	30	95.98	71.45	2.157
6219	95	170	32	110.28	82.81	2.620
6220	100	180	34	122.14	92.72	3.233
6221	105	190	36	132.99	104.45	3.782
6222	110	200	38	144.07	117.06	4.421
6224	120	215	40	155.32	130.99	5.30
6226	130	230	40	35.62	165.04	6.11
6228	140	250	42	43.11	179.14	7.75
6230	150	270	45	203.11	198.98	9.77
6300	10	35	11	7.65	3.48	0.053
6301	12	37	12	9.72	5.08	0.06
6302	15	42	13	11.40	5.40	0.082
6303	17	47	14	13.50	6.55	0.115
6304	20	52	15	15.90	7.80	0.141
6305	25	62	17	22.50	11.60	0.129
6306	30	72	19	27.00	15.19	0.347
6307	35	80	21	33.36	19.21	0.454
6308	40	90	23	40.75	21.01	0.633
6309	45	100	25	52.86	31.83	0.836

深沟球轴承

DEEP GROOVE BALL BEARING

轴承型号 Bearing No.	外型尺寸 (mm) Dimensions			额定动负荷 Basic Dynamic Load Rating CR(KN)	额定静负荷 Basic Static Load Rating COR(KN)	重量 Weight (kg)
	d	D	B			
6310	50	110	27	61.86	37.94	1.081
6311	55	120	29	71.57	44.76	1.369
6312	60	130	31	81.75	51.85	1.706
6313	65	140	33	93.87	60.44	2.097
6314	70	150	35	104.13	68.04	2.435
6315	75	160	37	113.42	76.97	2.987
6316	80	170	39	122.94	86.50	3.612
6317	85	180	41	132.67	96.58	4.284
6318	90	190	43	144.05	108.49	4.979
6319	95	200	45	156.66	121.98	5.740
6320	100	215	47	172.98	140.39	7.090
6321	105	225	49	183.69	153.08	8.03
6322	110	240	50	204.96	178.31	9.50
6324	120	260	55	227.59	207.40	12.2
6406	30	90	23	47.33	24.50	0.715
6407	35	100	25	55.74	29.35	0.922
6408	40	110	27	63.71	36.58	1.218
6409	45	120	29	77.38	45.38	1.495
6410	50	130	31	92.29	55.13	1.860
6411	55	140	33	100.67	62.45	2.400
6412	60	150	35	109.11	70.06	2.820
6413	65	160	37	118.14	78.57	3.350
6414	70	180	42	139.50	99.56	4.640
6415	75	190	45	153.75	114.32	5.690
6416	80	200	48	163.22	124.55	6.740
6417	85	210	52	174.90	137.49	7.910
6418	90	225	54	192.48	157.63	9.550
6420	100	250	58	223.08	194.61	12.813



圆锥滚子轴承 (公制)
TAPER ROLLER BEARINGS (METRIC)

轴承型号 Bearing No.	外型尺寸 (mm) Dimensions			重量 Weight (kg)	轴承型号 Bearing No.	外型尺寸 (mm) Dimensions			重量 Weight (kg)
	d	D	T			d	D	T	
30203	17.00	40.00	13.25	0.079	32206	30.00	62.00	21.25	0.287
30204	20.00	47.00	15.25	0.126	32207	35.00	72.00	24.25	0.445
30205	25.00	52.00	16.25	0.154	32208	40.00	80.00	24.75	0.532
30206	30.00	62.00	17.25	0.231	32209	45.00	85.00	24.75	0.573
30207	35.00	72.00	18.25	0.331	32210	50.00	90.00	24.75	0.626
30208	40.00	80.00	19.75	0.422	32211	55.00	100.00	26.75	0.853
30209	45.00	85.00	20.75	0.474	32212	60.00	110.00	29.75	1.170
30210	50.00	90.00	21.75	0.529	32213	65.00	120.00	32.75	1.550
30211	55.00	100.00	22.75	0.713	32214	70.00	125.00	33.25	1.640
30212	60.00	110.00	23.75	0.904	32215	75.00	130.00	33.25	1.740
30213	65.00	120.00	24.75	1.130	32216	80.00	140.00	35.25	2.130
30214	70.00	125.00	26.25	1.260	32217	85.00	150.00	38.50	2.680
30215	75.00	130.00	27.25	1.360	32218	90.00	160.00	42.50	3.440
30216	80.00	140.00	28.25	1.670	32219	95.00	170.00	45.50	4.240
30217	85.00	150.00	30.50	2.060	32220	100.00	180.00	49.00	5.100
30218	90.00	160.00	32.50	2.540	32221	105.00	190.00	53.00	6.260
30219	95.00	170.00	34.50	3.040	32222	110.00	200.00	56.00	7.430
30220	100.00	180.00	37.00	3.720	32303	17.00	47.00	20.25	0.173
30221	105.00	190.00	39.00	4.380	32304	20.00	52.00	22.25	0.230
30222	110.00	200.00	41.00	5.210	32305	25.00	62.00	25.25	0.368
30303	17.00	47.00	15.25	0.129	32306	30.00	72.00	28.75	0.562
30304	20.00	52.00	16.25	0.165	32307	35.00	80.00	32.75	0.763
30305	25.00	62.00	18.25	0.263	32308	40.00	90.00	35.25	1.040
30306	30.00	72.00	20.75	0.387	32309	45.00	100.00	38.25	1.400
30307	35.00	80.00	22.75	0.515	32310	50.00	110.00	42.25	1.890
30308	40.00	90.00	25.25	0.747	32311	55.00	120.00	45.50	2.370
30309	45.00	100.00	27.25	0.984	32312	60.00	130.00	48.50	2.900
30310	50.00	110.00	29.25	1.280	32313	65.00	140.00	51.00	3.540
30311	55.00	120.00	31.50	1.630	32314	70.00	150.00	54.00	4.340
30312	60.00	130.00	33.50	1.990	32315	75.00	160.00	58.00	5.370
30313	65.00	140.00	36.00	2.440	32316	80.00	170.00	61.50	6.380
30314	70.00	150.00	38.00	2.980	32317	85.00	180.00	63.50	7.310
30315	75.00	160.00	40.00	3.570	32318	90.00	190.00	67.50	8.810
30316	80.00	170.00	42.00	4.270	32319	95.00	200.00	71.50	10.100
30317	85.00	180.00	44.50	4.960	32320	100.00	215.00	77.50	13.000
30318	90.00	190.00	46.50	5.800	32321	105.00	225.00	81.50	14.800

圆锥滚子轴承 (公制)
TAPER ROLLER BEARINGS (METRIC)

轴承型号 Bearing No.	外型尺寸 (mm) Dimensions			重量 Weight (kg)	轴承型号 Bearing No.	外型尺寸 (mm) Dimensions			重量 Weight (kg)
	d	D	T			d	D	T	
32004X	20.00	42.00	15.00	0.095	33024	120.00	180.00	48.00	4.070
32005X	25.00	47.00	15.00	0.110	33026	130.00	200.00	55.00	6.140
32006X	30.00	55.00	17.00	0.170	33028	140.00	210.00	56.00	6.570
32007X	35.00	62.00	18.00	0.224	33108	40.00	75.00	26.00	0.510
32008X	40.00	68.00	19.00	0.267	33109	45.00	80.00	26.00	0.552
32009X	45.00	75.00	20.00	0.337	33110	50.00	85.00	26.00	0.597
32010X	50.00	80.00	20.00	0.366	33111	55.00	95.00	30.00	0.877
32011X	55.00	90.00	23.00	0.551	33112	60.00	100.00	30.00	0.910
32012X	60.00	95.00	23.00	0.584	33113	65.00	110.00	34.00	1.320
32013X	65.00	100.00	23.00	0.620	33114	70.00	120.00	37.00	1.710
32014X	70.00	110.00	25.00	0.839	33115	75.00	125.00	37.00	1.796
32015X	75.00	115.00	25.00	0.875	33116	80.00	130.00	37.00	1.880
32016X	80.00	125.00	29.00	1.270	33117	85.00	140.00	41.00	2.510
32017X	85.00	130.00	29.00	1.320	33118	90.00	150.00	45.00	3.216
32018X	90.00	140.00	32.00	1.720	33119	95.00	160.00	49.00	3.940
32019X	95.00	145.00	32.00	1.700	33120	100.00	150.00	39.00	2.330
32020X	100.00	150.00	32.00	1.850	33121	105.00	160.00	43.00	2.970
32021X	105.00	160.00	35.00	2.400	33122	110.00	170.00	47.00	3.740
32022X	110.00	170.00	38.00	3.020	33206	30.00	62.00	25.00	0.355
33006	30.00	55.00	20.00	0.201	33207	35.00	72.00	28.00	0.524
33007	35.00	62.00	21.00	0.254	33208	40.00	80.00	32.00	0.715
33008	40.00	68.00	22.00	0.306	33209	45.00	85.00	32.00	0.770
33009	45.00	75.00	24.00	0.398	33210	50.00	90.00	32.00	0.867
33010	50.00	80.00	24.00	0.433	33211	55.00	100.00	35.00	1.180
33011	55.00	90.00	27.00	0.651	33212	60.00	110.00	38.00	1.560
33012	60.00	95.00	27.00	0.691	33213	65.00	120.00	41.00	2.040
33013	65.00	100.00	27.00	0.732	33214	70.00	125.00	41.00	2.150
33014	70.00	110.00	31.00	1.070	33215	75.00	130.00	41.00	2.250
33015	75.00	115.00	31.00	1.120	33216	80.00	140.00	46.00	2.940
33016	80.00	125.00	36.00	1.630	33217	85.00	150.00	49.00	3.560
33017	85.00	130.00	36.00	1.690	33218	90.00	160.00	55.00	4.690
33018	90.00	140.00	39.00	2.200	33219	95.00	170.00	58.00	5.540
33019	95.00	145.00	39.00	2.260	33220	100.00	180.00	63.00	6.400
33020	100.00	150.00	39.00	2.330	33221	105.00	190.00	68.00	8.120
33022	110.00	170.00	47.00	3.740					

圆锥滚子轴承 (英制) TAPER ROLLER BEARINGS (INCH)

Table with 5 columns: Bearing No., Dimensions (d, D, T), Weight (kg), Bearing No., Dimensions (d, D, T), Weight (kg). Lists various taper roller bearing models and their specifications.

圆锥滚子轴承 (英制) TAPER ROLLER BEARINGS (INCH)

Table with 5 columns: Bearing No., Dimensions (d, D, T), Weight (kg), Bearing No., Dimensions (d, D, T), Weight (kg). Lists various taper roller bearing models and their specifications.

圆锥滚子轴承 (英制) TAPER ROLLER BEARINGS (INCH)

Table with 5 columns: Bearing No., Dimensions (d, D, T), and Weight (kg). Lists various tapered roller bearings with their specifications.

汽车轮毂轴承 AUTO WHEEL HUB BEARINGS

Table with 6 columns: Bearing No., Dimensions (d, D, B, C), and Weight (kg). Lists various auto wheel hub bearings with their specifications.

调心滚子轴承
SPHERICAL ROLLER BEARINGS

轴承型号 Bearing No.	外型尺寸 (mm) Dimensions			重量 Weight (kg)	轴承型号 Bearing No.	外型尺寸 (mm) Dimensions			重量 Weight (kg)
	d	D	T			d	D	T	
22208CAC3W33	40.00	80.00	23.00	0.540	21306CAC3W33	30.00	72.00	19.00	0.412
22209CAC3W33	45.00	85.00	23.00	0.580	21307CAC3W33	35.00	80.00	21.00	0.542
22210CAC3W33	50.00	90.00	23.00	0.620	21308CAC3W33	40.00	90.00	23.00	0.743
22211CAC3W33	55.00	100.00	25.00	0.840	21309CAC3W33	45.00	100.00	25.00	1.000
22212CAC3W33	60.00	110.00	28.00	1.200	21310CAC3W33	50.00	110.00	27.00	1.300
22213CAC3W33	65.00	120.00	31.00	1.600	21311CAC3W33	55.00	120.00	29.00	1.650
22214CAC3W33	70.00	125.00	31.00	1.700	21312CAC3W33	60.00	130.00	31.00	2.080
22215CAC3W33	75.00	130.00	31.00	1.800	21313CAC3W33	65.00	140.00	33.00	2.570
22216CAC3W33	80.00	140.00	33.00	2.200	21314CAC3W33	70.00	150.00	35.00	3.110
22217CAC3W33	85.00	150.00	36.00	2.700	21315CAC3W33	75.00	160.00	37.00	3.760
22218CAC3W33	90.00	160.00	40.00	3.280	21316CAC3W33	80.00	170.00	39.00	4.470
22219CAC3W33	95.00	170.00	43.00	4.100	21322CAC3W33	110.00	170.00	45.00	3.680
22220CAC3W33	100.00	180.00	46.00	5.000	23024CAC3W33	120.00	180.00	16.00	3.980
22222CAC3W33	110.00	200.00	53.00	7.200	23026CAC3W33	130.00	200.00	52.00	5.850
22224CAC3W33	120.00	215.00	58.00	8.900	23028CAC3W33	140.00	210.00	53.00	6.310
22226CAC3W33	130.00	230.00	64.00	11.200	23030CAC3W33	150.00	225.00	56.00	7.740
22228CAC3W33	100.00	250.00	68.00	14.500	23032CAC3W33	160.00	210.00	60.00	9.430
22230CAC3W33	150.00	270.00	73.00	18.600	23034CAC3W33	170.00	260.00	67.00	12.80
22308CAC3W33	40.00	90.00	33.00	1.000	23036CAC3W33	180.00	280.00	74.00	16.90
22309CAC3W33	45.00	100.00	36.00	1.380	23038CAC3W33	190.00	290.00	75.00	17.70
22310CAC3W33	50.00	110.00	40.00	1.850	23040CAC3W33	200.00	310.00	82.00	22.70
22311CAC3W33	55.00	120.00	43.00	2.350	23044CAC3W33	220.00	340.00	90.00	29.70
22312CAC3W33	60.00	130.00	46.00	2.950	23048CAC3W33	200.00	360.00	92.00	32.40
22313CAC3W33	65.00	140.00	48.00	3.550	24024CAC3W33	120.00	180.00	60.00	5.050
22314CAC3W33	70.00	150.00	51.00	4.400	24026CAC3W33	130.00	200.00	69.00	7.550
22315CAC3W33	75.00	160.00	55.00	5.250	24028CAC3W33	140.00	210.00	69.00	8.100
22316CAC3W33	80.00	170.00	58.00	6.390	24030CAC3W33	150.00	225.00	75.00	10.10
22317CAC3W33	85.00	180.00	60.00	7.250	24032CAC3W33	160.00	240.00	80.00	12.20
22318CAC3W33	90.00	190.00	64.00	8.600	24034CAC3W33	170.00	260.00	90.00	16.70
22319CAC3W33	95.00	200.00	67.00	10.100	24036CAC3W33	180.00	280.00	100.00	22.10
22320CAC3W33	100.00	215.00	73.00	13.400	24038CAC3W33	190.00	290.00	100.00	23.00
22322CAC3W33	110.00	240.00	80.00	18.000	24040CAC3W33	200.00	310.00	109.00	19.30
22324CAC3W33	120.00	260.00	86.00	22.000	24044CAC3W33	220.00	340.00	118.00	38.10
22326CAC3W33	130.00	280.00	93.00	28.500	24048CAC3W33	240.00	360.00	118.00	40.80

调心球轴承
SELF ALIGNING BALL BEARING

轴承型号 Bearing No.	外型尺寸 (mm) Dimensions			重量 Weight (kg)	轴承型号 Bearing No.	外型尺寸 (mm) Dimensions			重量 Weight (kg)
	d	D	B			d	D	B	
1200K	10.00	30.00	9.00	0.035	1318K	90.00	190.00	43.00	6.000
1201K	12.00	32.00	10.00	0.042	1319K	95.00	200.00	45.00	7.000
1202K	15.00	35.00	11.00	0.051	1320K	100.00	215.00	47.00	8.640
1203K	17.00	40.00	12.00	0.076	2204K	20.00	47.00	18.00	0.150
1204K	20.00	47.00	14.00	0.120	2205K	25.00	52.00	18.00	0.190
1205K	25.00	52.00	15.00	0.140	2206K	30.00	62.00	20.00	0.260
1206K	30.00	62.00	16.00	0.230	2207K	35.00	72.00	23.00	0.440
1207K	35.00	72.00	17.00	0.320	2208K	40.00	80.00	23.00	0.530
1208K	40.00	80.00	18.00	0.410	2209K	45.00	85.00	23.00	0.550
1209K	45.00	85.00	19.00	0.490	2210K	50.00	90.00	23.00	0.680
1210K	50.00	90.00	20.00	0.540	2211K	55.00	100.00	25.00	0.810
1211K	55.00	100.00	21.00	0.720	2212K	60.00	110.00	28.00	1.100
1212K	60.00	110.00	22.00	0.900	2213K	65.00	120.00	31.00	1.500
1213K	65.00	123.00	23.00	0.920	2214K	70.00	125.00	31.00	1.620
1214K	70.00	125.00	24.00	1.290	2215K	75.00	130.00	31.00	1.720
1215K	75.00	130.00	25.00	1.350	2216K	80.00	140.00	33.00	2.190
1216K	80.00	140.00	26.00	1.650	2217K	85.00	150.00	36.00	2.530
1217K	85.00	150.00	28.00	2.100	2218K	90.00	160.00	40.00	3.220
1218K	90.00	160.00	30.00	2.500	2219K	95.00	170.00	43.00	4.200
1219K	95.00	170.00	32.00	3.000	2220K	100.00	180.00	46.00	5.000
1220K	100.00	180.00	34.00	3.700	2305K	25.00	62.00	24.00	0.350
1303K	17.00	47.00	14.00	0.140	2306K	30.00	72.00	27.00	0.500
1304K	20.00	52.00	15.00	0.170	2307K	35.00	80.00	31.00	0.680
1305K	25.00	62.00	17.00	0.260	2308K	40.00	90.00	33.00	0.930
1306K	30.00	72.00	19.00	0.400	2309K	45.00	100.00	36.00	1.250
1307K	35.00	80.00	21.00	0.540	2310K	50.00	110.00	40.00	1.640
1308K	40.00	90.00	23.00	0.710	2311K	55.00	120.00	43.00	2.100
1309K	45.00	100.00	25.00	0.960	2312K	60.00	130.00	46.00	2.600
1310K	50.00	110.00	27.00	1.210	2313K	65.00	140.00	48.00	3.200
1311K	55.00	120.00	29.00	1.580	2314K	70.00	150.00	51.00	3.900
1312K	60.00	130.00	31.00	1.960	2315K	75.00	160.00	55.00	4.700
1313K	65.00	140.00	33.00	2.390	2316K	80.00	170.00	58.00	5.700
1314K	70.00	150.00	35.00	3.000	2317K	85.00	180.00	60.00	6.700
1315K	75.00	160.00	37.00	3.600	2318K	90.00	190.00	64.00	7.900
1316K	80.00	170.00	39.00	4.684	2319K	95.00	200.00	67.00	9.200
1317K	85.00	180.00	41.00	5.000	2320K	100.00	215.00	73.00	12.400

推力球轴承
THRUST BALL BEARING

轴承型号 Bearing No.	外型尺寸 (mm) Dimensions			重量 Weight (kg)	轴承型号 Bearing No.	外型尺寸 (mm) Dimensions			重量 Weight (kg)
	d	D	B			d	D	B	
51100	10.00	24.00	9.00	0.019	51216	80.00	115.00	28.00	0.900
51101	12.00	26.00	9.00	0.021	51217	85.00	125.00	31.00	1.210
51102	15.00	28.00	9.00	0.022	51218	90.00	135.00	35.00	1.650
51103	17.00	30.00	9.00	0.024	51220	100.00	150.00	38.00	2.210
51104	20.00	35.00	10.00	0.036	51222	110.00	160.00	38.00	2.390
51105	25.00	42.00	11.00	0.055	51224	120.00	170.00	39.00	2.620
51106	30.00	47.00	11.00	0.062	51226	130.00	190.00	45.00	3.930
51107	35.00	52.00	12.00	0.077	51228	140.00	200.00	46.00	4.270
51108	40.00	60.00	13.00	0.110	51230	150.00	215.00	50.00	5.520
51109	45.00	65.00	14.00	0.140	51232	160.00	225.00	51.00	5.910
51110	50.00	70.00	14.00	0.150	51234	170.00	240.00	55.00	7.310
51111	55.00	78.00	16.00	0.220	51304	20.00	47.00	18.00	0.150
51112	60.00	85.00	17.00	0.270	51305	25.00	52.00	18.00	0.170
51113	65.00	90.00	18.00	0.310	51306	30.00	60.00	21.00	0.260
51114	70.00	95.00	18.00	0.330	51307	35.00	68.00	24.00	0.370
51115	75.00	100.00	19.00	0.380	51308	40.00	78.00	26.00	0.530
51116	80.00	105.00	19.00	0.400	51309	45.00	85.00	28.00	0.660
51117	85.00	110.00	19.00	0.420	51310	50.00	95.00	31.00	0.920
51118	90.00	120.00	22.00	0.650	51311	55.00	105.00	35.00	1.280
51120	100.00	135.00	25.00	0.950	51312	60.00	110.00	35.00	1.370
51200	10.00	26.00	11.00	0.028	51313	65.00	115.00	36.00	1.480
51201	12.00	28.00	11.00	0.031	51314	70.00	125.00	40.00	1.980
51202	15.00	32.00	12.00	0.041	51315	75.00	135.00	44.00	2.580
51203	17.00	35.00	12.00	0.048	51316	80.00	140.00	44.00	2.690
51204	20.00	40.00	14.00	0.075	51317	85.00	150.00	49.00	3.470
51205	25.00	47.00	15.00	0.110	51318	90.00	155.00	50.00	3.690
51206	30.00	52.00	16.00	0.130	51320	100.00	170.00	55.00	4.860
51207	35.00	62.00	18.00	0.210	51322	110.00	190.00	63.00	7.050
51208	40.00	68.00	19.00	0.260	51324	120.00	210.00	70.00	9.540
51209	45.00	73.00	20.00	0.300	51326	130.00	225.00	75.00	11.70
51210	50.00	78.00	22.00	0.370	51328	140.00	240.00	80.00	14.10
51211	55.00	90.00	25.00	0.580	51330	150.00	250.00	80.00	14.90
51212	60.00	95.00	26.00	0.660	51332	160.00	270.00	87.00	18.90
51213	65.00	100.00	27.00	0.720	51334	170.00	280.00	87.00	22.50
51214	70.00	105.00	27.00	0.750	51336	180.00	300.00	95.00	28.70
51215	75.00	110.00	27.00	0.820	51338	190.00	320.00	105.00	41.10

圆柱滚子轴承
CYLINDRICAL ROLLER BEARING

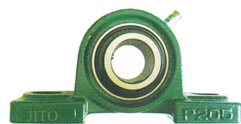
轴承型号 Bearing No.	轴承型号 Bearing No.	轴承型号 Bearing No.	外型尺寸 (mm) Dimensions			重量 Weight (kg)
			d	D	T	
NJ202	NU202	NUP202	15.00	35.00	11.00	0.101
NJ203	NU203	NUP203	17.00	40.00	12.00	0.109
NJ204	NU204	NUP204	20.00	47.00	14.00	0.117
NJ205	NU205	NUP205	25.00	52.00	15.00	0.140
NJ206	NU206	NUP206	30.00	62.00	16.00	0.214
NJ207	NU207	NUP207	35.00	72.00	17.00	0.311
NJ208	NU208	NUP208	40.00	80.00	18.00	0.394
NJ209	NU209	NUP209	45.00	85.00	19.00	0.450
NJ210	NU210	NUP210	50.00	90.00	20.00	0.505
NJ211	NU211	NUP211	55.00	100.00	21.00	0.680
NJ212	NU212	NUP212	60.00	110.00	22.00	0.860
NJ213	NU213	NUP213	65.00	120.00	23.00	1.080
NJ214	NU214	NUP214	70.00	125.00	24.00	1.200
NJ215	NU215	NUP215	75.00	130.00	25.00	1.320
NJ216	NU216	NUP216	80.00	140.00	26.00	1.580
NJ217	NU217	NUP217	85.00	150.00	28.00	2.000
NJ218	NU218	NUP218	90.00	160.00	30.00	2.440
NJ219	NU219	NUP219	95.00	170.00	32.00	2.960
NJ303	NU303	NUP303	17.00	47.00	14.00	0.147
NJ304	NU304	NUP304	20.00	52.00	15.00	0.155
NJ305	NU305	NUP305	25.00	62.00	17.00	0.251
NJ306	NU306	NUP306	30.00	72.00	19.00	0.377
NJ307	NU307	NUP307	35.00	80.00	21.00	0.500
NJ308	NU308	NUP308	40.00	90.00	23.00	0.680
NJ309	NU309	NUP309	45.00	100.00	25.00	0.930
NJ310	NU310	NUP310	50.00	110.00	27.00	1.200
NJ311	NU311	NUP311	55.00	120.00	29.00	1.530
NJ312	NU312	NUP312	60.00	130.00	31.00	1.870
NJ313	NU313	NUP313	65.00	140.00	33.00	2.310
NJ314	NU314	NUP314	70.00	150.00	35.00	2.860
NJ315	NU315	NUP315	75.00	160.00	37.00	3.400
NJ316	NU316	NUP316	80.00	170.00	39.00	4.000
NJ317	NU317	NUP317	85.00	180.00	41.00	4.820
NJ318	NU318	NUP318	90.00	190.00	43.00	5.590
NJ319	NU319	NUP319	95.00	200.00	45.00	6.520
NJ320	NU320	NUP320	100.00	215.00	47.00	7.900

外球面轴承
PILLOW BLOCK BEARING

轴承型号 Bearing No.	外型尺寸 (mm) Dimensions			重量 Weight (kg)	轴承型号 Bearing No.	外型尺寸 (mm) Dimensions			重量 Weight (kg)
	d	D	B			d	D	B	
UC201	12.00	40.00	27.40	0.110	UC211	55.00	100.00	55.60	1.120
UC202	15.00	40.00	27.40	0.120	UC212	60.00	110.00	65.10	1.540
UC203	17.00	40.00	27.40	0.130	UC213	65.00	120.00	65.10	1.860
UC204	20.00	47.00	31.00	0.180	UC214	70.00	125.00	74.60	2.050
UC205	25.00	52.00	34.10	0.220	UC215	75.00	130.00	77.80	2.210
UC206	30.00	62.00	38.10	0.340	UC216	80.00	140.00	82.60	2.790
UC207	35.00	72.00	42.90	0.520	UC217	85.00	150.00	85.70	3.380
UC208	40.00	80.00	49.20	0.680	UC218	90.00	160.00	96.00	4.460
UC209	45.00	85.00	49.20	0.780	UC203-11	11/16	40.00	27.40	0.150
UC210	50.00	90.00	51.60	0.850	UC204-12	3/4	47.00	31.00	0.180

推力滚子轴承
THRUST ROLLER BEARING

轴承型号 Bearing No.	外型尺寸 (mm) Dimensions			重量 Weight (kg)
	d	D	B	
29318	90.00	155.00	30.00	3.060
29320	100.00	170.00	42.00	4.490
29322	110.00	190.00	48.00	5.460
29324	120.00	210.00	54.00	7.780
29326	130.00	220.00	58.00	8.170
29328	140.00	240.00	60.00	11.200
29330	150.00	250.00	60.00	11.500
29332	160.00	270.00	67.00	15.000
29412	60.00	130.00	42.00	2.600
29413	65.00	140.00	45.00	3.330
29414	70.00	150.00	48.00	3.870
29415	75.00	160.00	51.00	4.730
29416	80.00	170.00	54.00	5.980
29418	90.00	190.00	60.00	7.600
29420	100.00	210.00	67.00	11.320
29422	110.00	230.00	73.00	12.800
29424	120.00	250.00	78.00	19.500
29426	130.00	270.00	85.00	23.500
29428	140.00	280.00	85.00	24.600
29430	150.00	300.00	90.00	28.900
29432	160.00	320.00	95.00	33.250



挖掘机轴承
EXCAVATOR BEARING

轴承型号 Bearing No.	外型尺寸 (mm) Dimensions			重量 Weight (kg)	轴承型号 Bearing No.	外型尺寸 (mm) Dimensions			重量 Weight (kg)
	d	D	B			d	D	B	
BA289-1	289.00	355.00	33.00		AC5836	289.00	355.00	33.00	
BA290-3	290.00	380.00	40.00		AC6037	300.00	370.00	32.00	
BD130-1SA	130.00	166.00	34.00		BA180-4WSA	180.00	250.00	33.00	
SF4852RX1	240.00	310.00	52.00		BA205-1	205.00	245.00	38.00	
SF4815PX1	240.00	310.00	32.00		BA222-1WSA	222.00	273.00	26.00	
SF4826PX1	240.00	310.00	32.50		BA230-7ASA	230.00	300.00	32.50	
AC5033	250.00	330.00	38.00		BA240-3WSA	240.00	310.00	32.50	
120BA160/24	120.00	165.00	22.00		BA246-2	246.00	312.00	32.00	
AC423040-1	210.00	300.00	40.00		BA250-4A	250.00	330.00	38.00	
180BA-2256	180.00	225.00	22.00		BA260-3A	260.00	340.00	38.00	
180BN19	180.00	250.00	33.00		BA260-4A	260.00	340.00	38.00	
184BA-22251	184.00	226.00	22.00		BA280-2A	280.00	370.00	40.00	
200BA27V2	200.00	272.00	35.00		SF44119X1	220.00	290.00	32.00	
210BA29V	210.00	290.00	26.00		LL639249/10	191.00	241.30	23.812	
SF3235PX1	160.00	200.00	20.00		LL775449/10	177.80	215.90	20.628	
SF3607PX1	180.00	225.00	22.00		L544091/118	231.775	300.008	35.338	

叉车轴承
FORKLIFT BEARING

轴承型号 Bearing No.	外型尺寸 (mm) Dimensions			重量 Weight (kg)	轴承型号 Bearing No.	外型尺寸 (mm) Dimensions			重量 Weight (kg)
	d	D	B			d	D	B	
140105-01233	40	99.4	28		69HN-18600	40	125	44	
140105-01237	40	109.8	31		HHL-61FV-18300	45	127	52	
140105-01388	35	88.8	32		HHL-63HN-18101	40	125	39	
140105-01392	40	104.4	28		6625011801	45	127.5	31.6	
A137093	39	45.2	60		DHI-D581798	35	108	48.5	
D300038	45	127	31.75		DHI-D700087	25	98	48.8	
D580006	35	98.5	29		CS67D15H30	15	67	30	
D581814	40	108.6	31		WG108D50H16	50	108	16	
WGR150D35H24	35	150	22		DHI-A136845	45	164	74	
WG150D60H22	60	150	22		HHL-63HK-18101	40	117.5	28.08	
CS87D30H37	30	87	33		WG176D40H29	40	176	29	
140105-01238	40	110.3	31		WG159D40H25	40	159	25	
DHI-A216341	25	103	48.8		HHL-6600181100	40	114.6	28	
DIC-D580007	35	99	29		61HQ-18101	40	99.6	30	
D580010	30	94	36		61FY-18101	35	98.4	29	
HHL-6600181000	35	95	25.2		HHL-61HD-18500	45	148	56	

JITO[®]
SINCE 2006

KEEP IMPROVING OPEN UP THE FUTURE

業精于勤 · 團結進取

Diligence makes mastery · unity and progress

誠實守信 · 追求卓越

Honesty and trustworthiness · pursuit of excellence

