

液压驱动世界 华盛智造未来



Qingzhou Boxinhuasheng Hydraulic Technology Co., Ltd.

Add: No1688, Dayin Industrial Zone, Yidu East Street, Qingzhou, Weifang City, Shandong Province, China

Telephone: +86 536 3882816

Fax: +86 536 3506898

Email: sales@chinesehydraulic.com

Website: www.chinesehydraulic.com www.bxshydraulic.com

青州博信华盛液压科技有限公司

地址：中国山东省青州市益都东路大尹工业园1688号

电话：0536-3882816 0536-3882818
0536-3501067 0536-3501066

传真：0536-3506898

邮箱：qzhsyy0536@163.com

网址：www.chinesehydraulic.com www.bxshydraulic.com

HS-HYDRAULIC
Boxin

Directional Control Valve / Gear Pump / Piston Pump / Steering Unit

多路换向阀/齿轮泵/柱塞泵/转向器



SINCE 2001

Hydraulic Power the World

Huasheng Forges the future

液压驱动世界 华盛智造未来



Qingzhou Boxinhuasheng Hydraulic Technology Co., Ltd.

青州博信华盛液压科技有限公司



Factory Capacity 工厂规模

Our company has three modern production plants and an oversea trading department, covering a total area of about 68,000 square meters, the company now has vertical machining centers, CNC machine tools, high-precision centerless fine grinding machine, CNC milling machines, CNC milling machines and high-pressure cleaners and other processing equipment more than 200 sets, 2 spraying lines, 20+ assembly lines, 20+ testing benches and 20+ hardness testers, oil cleanliness testers, cylindricity testers, coordinate measuring machines and other testing equipment.

我们公司拥有 3 个现代化生产工厂以及一个国际贸易事业部,总占地面积约 68000 平方米,公司现拥有立式加工中心、数控机床、高精度无心磨床、数控铣床、数控珩磨机以及高压清洗机等加工设备 200 余台,喷涂线 2 条,组装线 20 余条,试验台 20 余台以及硬度计、油液清洁度检测仪、圆柱度仪、齿形仪、三坐标测量仪等检测设备 20 余台。先进的设施为我们提供了强大的设计、研发、生产能力和严谨科学的制造流程。同时,我们注重环境保护和可持续发展,在生产过程中采取了一系列的环保措施,确保我们的产品在满足客户需求的同时又满足了严格的环保环评要求。



Core Competition 核心竞争

"Hydraulics drives the world, Huasheng forges the future" is our philosophy and mission. In the future, we will continue to devote ourselves to expanding high-end market and strengthen technological innovation and product development to meet the changing needs of our customers. We will continue to improve our product positioning and craftsmanship, and constantly pursue excellence in quality and reliability to ensure our products are at the forefront of the market.

" 液压驱动世界,华盛智造未来 " 是我们坚持的理念和使命。在未来,我们将继续致力于拓展高端市场,加强技术创新和产品研发,以满足不断变化的客户需求。我们将持续提升产品的定位和工艺水平,不断追求卓越品质和可靠性,确保我们的产品市场中处于领先地位。

Company Profile 公司简介

Qingzhou Boxinhuasheng Hydraulic Technology Co., Ltd. was established in 2001 and is headquartered in Qingzhou City, Shandong Province, which is located in the economic center of East China. Our company have been focusing on the comprehensive production of hydraulic distributors, Directional Control Valves, Hydraulic Gear Pumps, Hydraulic Piston Pumps and other hydraulic components as our core business.

As an industry-leading hydraulic technology company, we have rich experience and professional technical team in the field of hydraulics. Currently, we have 350 employees, including 20 senior engineers with deep specialized R&D and innovation capabilities.

Our team is committed to developing, designing and manufacturing high-quality hydraulic products to meet the needs and challenges of our customers while providing them with superior hydraulic system solutions and optimization.

青州博信华盛液压科技有限公司成立于 2001 年,总部位于华东地区的经济中心-山东省青州市。公司专注于液压分配器、多路换向阀、液压齿轮泵、液压柱塞泵以及其他液压元件的设计、研发、生产以及销售。产品远销全球40多个国家及地区。作为一家行业领先的液压技术企业,我们在液压领域拥有丰富的经验和专业的技术团队。目前,公司员工总数达 350 人,其中包括 20 名资深工程师,他们具备深厚的专业研发 和创新能力。我们的团队致力于研发、设计和制造高品质的液压产品,在满足不同客户的需求和挑战的同时为客户提供优质的液压系统解决和优化方案。

<h1>30+</h1> <p>30+ Oversea Market Recognition</p> <p>30多个国家的客户的认可</p>	<h1>20+</h1> <p>20+ Experienced Engineers</p> <p>20余名从业10年以上的专业工程师</p>	<h1>350+</h1> <p>350+ Experienced Workers</p> <p>350+名熟练员工</p>	<h1>100%</h1> <p>100% Factory Test</p> <p>100%成品负载试验检测</p>
--	--	--	--

Main Products
主要产品



Control Method
控制方式

Manual , pneumatic , electro-pneumatic, hydraulic , electro-hydraulic , electro-proportional , solenoid , joystick and cable control

手控 , 气控 , 电气控 , 液控 , 电液控 , 电比例控制 , 电磁控 , 一控二手柄 , 软轴控制



Applications 应用领域

Our products are used in a wide range of applications including agricultural machinery, construction machinery, drilling machinery, petroleum machinery and specialised vehicles. Whether it's a hydraulic distributor for agricultural machinery, a multiway directional valve for construction machinery or a gear pump for specialised vehicles, our products demonstrate outstanding performance and reliability. We also offer customised hydraulic solutions for specialised industries such as oil and drilling machinery to meet the needs of our customers in complex environments.

我们的产品广泛应用于农业机械、工程机械、钻探机械、石油机械、专用车辆等各个领域。无论是用于农业机械的液压分配器，还是工程机械中的多路换向阀，或者是专用车辆上的齿轮泵我们的产品都展现出卓越的性能和可靠性。同时，我们还为石油机械和钻探机械等特殊行业提供定制化的液压解决方案，满足客户在复杂环境下的需求。



Past Exhibitions 历年展会



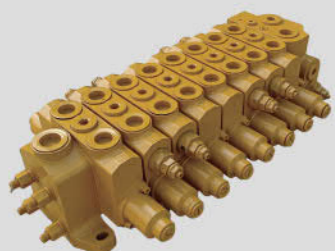
Certificate 资质证书

In order to ensure the stability and consistency of product quality, our company has established a perfect quality management system. We strictly follow international certification standards such as IATF16949, ISO9001 and CE for production and quality control. From the selection of raw materials to the monitoring of the production process, we always put quality in the first place, and constantly improve the production process and product performance to ensure that every product delivered to customers has excellent quality and superior performance.

为了确保产品质量的稳定和一致性，我们公司建立了完善的质量管理体系。我们严格按照 IATF16949、ISO9001 和 CE 等国际认证标准进行生产和质量控制。从原材料的选择到生产过程的监控，我们始终将质量放在首位，不断提升生产工艺和产品性能，以确保交付给客户的每一件产品都具备卓越的品质和优越的性能。



HSD系列 HSD Series



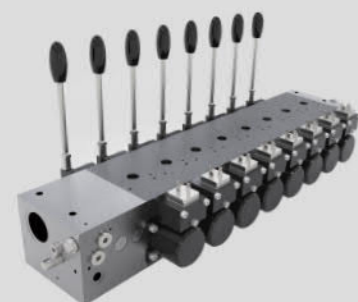
HSDW

Structure	结构	Sectional 分片式	
Rated Flow	额定流量	160 L/min	42 US GPM
Max Pressure	最大压力	25 Mpa	3626 PSI
Controlling Method	控制方式	Manual Control, Electro-hydraulic Control, Hydraulic Control 手控、液控、电液控	



HSDVG32

Structure	结构	Sectional 分片式	
Rated Flow	额定流量	140 L/min	37 US GPM
Max Pressure	最大压力	35 Mpa	5076 PSI
Controlling Method	控制方式	Electro-Proportional, Hydraulic, Hydraulic control & manual control, Electric proportional & manual control 电比例控制, 液控, 液控+手控, 电比例+手控	



HSDSL

Structure	结构	Sectional 分片式	
Rated Flow	额定流量	140 L/min	37 US GPM
Max Pressure	最大压力	35 Mpa	5076 PSI
Controlling Method	控制方式	Electro-Proportional, Hydraulic, Hydraulic control & manual control, Electric proportional & manual control 电比例控制, 液控, 液控+手控, 电比例+手控	

DCV系列 DCV Series



DCV20

Structure	结构	Monoblock 整体式	
Rated Flow	额定流量	20 L/min	5.3 US GPM
Max Pressure	最大压力	35 Mpa	5076 PSI
Controlling Method	控制方式	Manual, Pneumatic, Solenoid, Electro-hydraulic, Electro-pneumatic, Hydraulic, Joystick, Cable, Proportional, Micro-Switch, Dual Control 手控、气控、液控、电液控、电磁控、电气控、电比例、一控二、软轴、微动开关、双控	

DCV系列 DCV Series



DCV40

Structure	结构	Monoblock 整体式	
Rated Flow	额定流量	40 L/min	10.6 US GPM
Max Pressure	最大压力	35 Mpa	5076 PSI
Controlling Method	控制方式	Manual, Pneumatic, Solenoid, Electro-hydraulic, Electro-pneumatic, Hydraulic, Joystick, Cable, Proportional, Micro-Switch, Dual Control 手控、气控、液控、电液控、电磁控、电气控、电比例、一控二、软轴、微动开关、双控	



DCV58

Structure	结构	Sectional 分片式	
Rated Flow	额定流量	60 L/min	15.9 US GPM
Max Pressure	最大压力	35 Mpa	5076 PSI
Controlling Method	控制方式	Manual, Pneumatic, Solenoid, Electro-hydraulic, Electro-pneumatic, Hydraulic, Joystick, Cable, Proportional, Micro-Switch, Dual Control 手控、气控、液控、电液控、电磁控、电气控、电比例、一控二、软轴、微动开关、双控	



DCV60

Structure	结构	Sectional 分片式	
Rated Flow	额定流量	60 L/min	15.9 US GPM
Max Pressure	最大压力	35 Mpa	5076 PSI
Controlling Method	控制方式	Manual, Pneumatic, Solenoid, Electro-hydraulic, Electro-pneumatic, Hydraulic, Joystick, Cable, Proportional, Micro-Switch, Dual Control 手控、气控、液控、电液控、电磁控、电气控、电比例、一控二、软轴、微动开关、双控	



DCV100

Structure	结构	Sectional 分片式	
Rated Flow	额定流量	100 L/min	26.4 US GPM
Max Pressure	最大压力	35 Mpa	5076 PSI
Controlling Method	控制方式	Manual, Pneumatic, Solenoid, Electro-hydraulic, Electro-pneumatic, Hydraulic, Joystick, Cable, Proportional, Micro-Switch, Dual Control 手控、气控、液控、电液控、电磁控、电气控、电比例、一控二、软轴、微动开关、双控	

DCV系列 DCV Series



DCV140

Structure	结构	Sectional 分片式	
Rated Flow	额定流量	140 L/min	36.9 US GPM
Max Pressure	最大压力	35 Mpa	5076 PSI
Controlling Method	控制方式	Manual, Pneumatic, Solenoid, Electro-hydraulic, Electro-pneumatic, Hydraulic, Joystick, Cable, Proportional, Micro-Switch, Dual Control 手控、气控、液控、电液控、电磁控、电气控、电比例、一控二、软轴、微动开关、双控	



DCV200

Structure	结构	Sectional 分片式	
Rated Flow	额定流量	200 L/min	53.0 US GPM
Max Pressure	最大压力	35 Mpa	5076 PSI
Controlling Method	控制方式	Manual, Pneumatic, Solenoid, Electro-hydraulic, Electro-pneumatic, Hydraulic, Joystick, Cable, Proportional, Micro-Switch, Dual Control 手控、气控、液控、电液控、电磁控、电气控、电比例、一控二、软轴、微动开关、双控	

HSP40/50/80/120系列 HSP40/50/80/120 Series



HSP40

Structure	结构	Monoblock 整体式	
Rated Flow	额定流量	40 L/min	10.6 US GPM
Max Pressure	最大压力	25 Mpa	3626 PSI
Controlling Method	控制方式	Manual, Pneumatic, Solenoid, Electro-hydraulic, Electro-pneumatic, Hydraulic, Joystick, Cable, Proportional, Micro-Switch, Dual Control 手控、气控、液控、电液控、电磁控、电气控、电比例、一控二、软轴、微动开关、双控	



HSP50

Structure	结构	Monoblock 整体式	
Rated Flow	额定流量	50 L/min	12.3 US GPM
Max Pressure	最大压力	25 Mpa	3626 PSI
Controlling Method	控制方式	Manual, Pneumatic, Solenoid, Electro-hydraulic, Electro-pneumatic, Hydraulic, Joystick, Cable, Proportional, Micro-Switch, Dual Control 手控、气控、液控、电液控、电磁控、电气控、电比例、一控二、软轴、微动开关、双控	

HSP40/50/80/120系列 HSP40/50/80/120 Series



HSP80

Structure	结构	Monoblock 整体式	
Rated Flow	额定流量	80 L/min	21.0 US GPM
Max Pressure	最大压力	25 Mpa	3626 PSI
Controlling Method	控制方式	Manual, Pneumatic, Solenoid, Electro-hydraulic, Electro-pneumatic, Hydraulic, Joystick, Cable, Proportional, Micro-Switch, Dual Control 手控、气控、液控、电液控、电磁控、电气控、电比例、一控二、软轴、微动开关、双控	



HSP120

Structure	结构	Monoblock 整体式	
Rated Flow	额定流量	120 L/min	31.8 US GPM
Max Pressure	最大压力	25 Mpa	3626 PSI
Controlling Method	控制方式	Manual, Pneumatic, Solenoid, Electro-hydraulic, Electro-pneumatic, Cable, Hydraulic, Joystick, Proportional, Micro-Switch, Dual, Rotary Control 手控、气控、液控、电液控、电磁控、电气控、电比例、一控二、软轴、微动开关、双控、旋转手柄	

HSSD系列 HSSD Series



HSSD4

Structure	结构	Monoblock 整体式	
Rated Flow	额定流量	45 L/min	11.9 US GPM
Max Pressure	最大压力	25 Mpa	3626 PSI
Controlling Method	控制方式	Manual Control 手控	



HSSD5

Structure	结构	Monoblock 整体式	
Rated Flow	额定流量	45 L/min	11.9 US GPM
Max Pressure	最大压力	31.5 Mpa	4600 PSI
Controlling Method	控制方式	Manual, Pneumatic, Solenoid, Electro-hydraulic, Electro-pneumatic, Hydraulic, Joystick, Cable, Proportional, Micro-Switch, Dual Control 手控、气控、液控、电液控、电磁控、电气控、电比例、一控二、软轴、微动开关、双控	

HSSD系列 HSSD Series



HSDM45

Structure	结构	Monoblock 整体式	
Rated Flow	额定流量	45 L/min	11.8 US GPM
Max Pressure	最大压力	31.5 Mpa	4600 PSI
Controlling Method	控制方式	Manual Control, Cable Control 手控、软轴控制	



TR55

Structure	结构	Monoblock 整体式	
Rated Flow	额定流量	50 L/min	13.2 US GPM
Max Pressure	最大压力	35 Mpa	5076 PSI
Controlling Method	控制方式	Manual Control 手控	



HSSD6

Structure	结构	Sectional 分片式	
Rated Flow	额定流量	45L/min	11.8 US GPM
Max Pressure	最大压力	31.5 Mpa	4600 PSI
Controlling Method	控制方式	Manual, Pneumatic, Solenoid, Electro-hydraulic, Electro-pneumatic, Hydraulic, Joystick, Cable, Proportional, Micro-Switch, Dual Control 手控、气控、液控、电液控、电磁控、电气控、电比例、一控二、软轴、微动开关、双控	



HSSD8

Structure	结构	Sectional 分片式	
Rated Flow	额定流量	90L/min	23.7 US GPM
Max Pressure	最大压力	31.5 Mpa	4600 PSI
Controlling Method	控制方式	Manual, Pneumatic, Solenoid, Electro-hydraulic, Electro-pneumatic, Hydraulic, Joystick, Cable, Proportional, Micro-Switch, Dual Control 手控、气控、液控、电液控、电磁控、电气控、电比例、一控二、软轴、微动开关、双控	

HSSD系列 HSSD Series



HSSD11

Structure	结构	Monoblock 整体式	
Rated Flow	额定流量	75 L/min	19.6 US GPM
Max Pressure	最大压力	25 Mpa	3626 PSI
Controlling Method	控制方式	Manual, Pneumatic, Solenoid, Electro-hydraulic, Electro-pneumatic, Hydraulic, Joystick, Cable, Proportional, Micro-Switch, Dual Control 手控、气控、液控、电液控、电磁控、电气控、电比例、一控二、软轴、微动开关、双控	



HSSD14

Structure	结构	Monoblock 整体式	
Rated Flow	额定流量	120 L/min	31.7 US GPM
Max Pressure	最大压力	25 Mpa	3626 PSI
Controlling Method	控制方式	Manual Control Rotation Handle Cable Control	手控 旋转手柄 软轴控制



HSDS15

Structure	结构	Sectional 分片式	
Rated Flow	额定流量	60 L/min	16.0 US GPM
Max Pressure	最大压力	25 Mpa	3626 PSI
Controlling Method	控制方式	Manual, Pneumatic, Solenoid, Electro-hydraulic, Electro-pneumatic, Hydraulic, Joystick, Cable, Proportional, Micro-Switch, Dual Control 手控、气控、液控、电液控、电磁控、电气控、电比例、一控二、软轴、微动开关、双控	



HSSD18

Structure	结构	Monoblock 整体式	
Rated Flow	额定流量	160 L/min	42.2 US GPM
Max Pressure	最大压力	25 Mpa	3626 PSI
Controlling Method	控制方式	Manual, Pneumatic, Solenoid, Electro-hydraulic, Electro-pneumatic, Cable, Hydraulic, Joystick, Proportional, Micro-Switch, Dual, Rotary Control 手控、气控、液控、电液控、电磁控、电气控、电比例、一控二、软轴、微动开关、双控、旋转手柄	

HSSD系列 HSSD Series



SDS180

Structure	结构	Sectional 分片式	
Rated Flow	额定流量	160 L/min	42 US GPM
Max Pressure	最大压力	31.5 Mpa	4600 PSI
Controlling Method	控制方式	Manual, Pneumatic, Solenoid, Electro-hydraulic, Electro-pneumatic, Cable, Hydraulic, Joystick, Proportional, Micro-Switch, Dual, Rotary Control 手控、气控、液控、电液控、电磁控、电气控、电比例、一控二、软轴、微动开关、双控、旋转手柄	



HSSD25

Structure	结构	Sectional 分片式	
Rated Flow	额定流量	240L/min	63.3 US GPM
Max Pressure	最大压力	31.5 Mpa	4600 PSI
Controlling Method	控制方式	Manual, Pneumatic, Solenoid, Electro-hydraulic, Electro-pneumatic, Cable, Hydraulic, Joystick, Proportional, Micro-Switch, Dual, Rotary Control 手控、气控、液控、电液控、电磁控、电气控、电比例、一控二、软轴、微动开关、双控、旋转手柄	



SDS380

Structure	结构	Sectional 分片式	
Rated Flow	额定流量	380 L/min	100 US GPM
Max Pressure	最大压力	31.5 Mpa	4600 PSI
Controlling Method	控制方式	Manual, Pneumatic, Solenoid, Electro-hydraulic, Electro-pneumatic, Cable, Hydraulic, Joystick, Proportional, Micro-Switch, Dual, Rotary Control 手控、气控、液控、电液控、电磁控、电气控、电比例、一控二、软轴、微动开关、双控、旋转手柄	



Q45

Structure	结构	Monoblock 整体式	
Rated Flow	额定流量	45L/min	11.8 US GPM
Max Pressure	最大压力	31.5 Mpa	4600 PSI
Controlling Method	控制方式	Manual Control 手控	

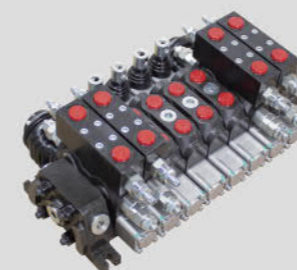
HSSD系列 HSSD Series



Q75

Structure	结构	Monoblock 整体式	
Rated Flow	额定流量	75L/min	19.8 US GPM
Max Pressure	最大压力	31.5 Mpa	4600 PSI
Controlling Method	控制方式	Manual Control 手控	

抓木机阀 Wood Grabber Valve



DCV60

Structure	结构	Sectional 分片式	
Rated Flow	额定流量	60L/min	15.9 US GPM
Max Pressure	最大压力	31.5 Mpa	4600 PSI
Controlling Method	控制方式	Manual, Pneumatic, Solenoid, Electro-hydraulic, Electro-pneumatic, Hydraulic, Joystick, Cable, Proportional, Micro-Switch, Dual Control 手控、气控、液控、电液控、电磁控、电气控、电比例、一控二、软轴、微动开关、双控	



HSSD8-1

Structure	结构	Sectional 分片式	
Rated Flow	额定流量	90L/min	23.7 US GPM
Max Pressure	最大压力	31.5 Mpa	4600 PSI
Controlling Method	控制方式	Manual, Pneumatic, Solenoid, Electro-hydraulic, Electro-pneumatic, Hydraulic, Joystick, Cable, Proportional, Micro-Switch, Dual Control 手控、气控、液控、电液控、电磁控、电气控、电比例、一控二、软轴、微动开关、双控	



HSSD8-2

Structure	结构	Sectional 分片式	
Rated Flow	额定流量	90L/min	23.7 US GPM
Max Pressure	最大压力	31.5 Mpa	4600 PSI
Controlling Method	控制方式	Manual, Pneumatic, Solenoid, Electro-hydraulic, Electro-pneumatic, Hydraulic, Joystick, Cable, Proportional, Micro-Switch, Dual Control 手控、气控、液控、电液控、电磁控、电气控、电比例、一控二、软轴、微动开关、双控	

劈木机阀 Log Splitter Valve



LS755

Structure	结构	Monoblock 整体式	
Rated Flow	额定流量	65 L/min	17 US GPM
Max Pressure	最大压力	25 Mpa	3626 PSI
Controlling Method	控制方式	Manual Control 手控	



HSP81

Structure	结构	Monoblock 整体式	
Rated Flow	额定流量	80 L/min	21.0 US GPM
Max Pressure	最大压力	25 Mpa	3626 PSI
Controlling Method	控制方式	Manual Control 手控	



LVA1-95

Structure	结构	Monoblock 整体式	
Rated Flow	额定流量	95 L/min	25 US GPM
Max Pressure	最大压力	31.5 Mpa	4600PSI
Controlling Method	控制方式	Manual Control 手控	

下车阀 Undercarriage valve



DCV40/Z-5

Structure	结构	Monoblock 整体式	
Rated Flow	额定流量	40 L/min	10.6 US GPM
Max Pressure	最大压力	31.5 Mpa	4600 PSI
Controlling Method	控制方式	Manual, Pneumatic, Solenoid, Electro-hydraulic, Electro-pneumatic, Hydraulic, Joystick, Cable, Proportional, Micro-Switch, Dual Control 手控、气控、液控、电液控、电磁控、电气控、电比例、一控二、软轴、微动开关、双控	

下车阀 Undercarriage valve



CDB15

Structure	结构	Sectional 分片式	
Rated Flow	额定流量	63 L/min	16.6 US GPM
Max Pressure	最大压力	20 Mpa	2900 PSI
Controlling Method	控制方式	Manual, Pneumatic, Solenoid, Electro-hydraulic, Electro-pneumatic, Hydraulic, Joystick, Cable, Proportional, Micro-Switch, Dual Control 手控、气控、液控、电液控、电磁控、电气控、电比例、一控二、软轴、微动开关、双控	



CDB20

Structure	结构	Sectional 分片式	
Rated Flow	额定流量	100 L/min	26.4 US GPM
Max Pressure	最大压力	20 Mpa	2900 PSI
Controlling Method	控制方式	Manual, Pneumatic, Solenoid, Electro-hydraulic, Electro-pneumatic, Hydraulic, Joystick, Cable, Proportional, Micro-Switch, Dual Control 手控、气控、液控、电液控、电磁控、电气控、电比例、一控二、软轴、微动开关、双控	

农用电控阀 Agricultural Equipments Solenoid Valve



HDCF50

Structure	结构	Sectional 分片式	
Rated Flow	额定流量	50 L/min	13.2 US GPM
Max Pressure	最大压力	20 Mpa	2900 PSI
Controlling Method	控制方式	Solenoid Control 电磁控	

HDCF100



Structure	结构	Sectional 分片式	
Rated Flow	额定流量	100 L/min	26.4 US GPM
Max Pressure	最大压力	20Mpa	2900 PSI
Controlling Method	控制方式	Solenoid Control 电磁控	

农用电控阀 Agricultural Equipments Solenoid Valve

YDF15



Structure	结构	Monoblock 整体式	
Rated Flow	额定流量	65 L/min	15.8 US GPM
Max Pressure	最大压力	20 Mpa	2900 PSI
Controlling Method	控制方式	Manual, Pneumatic, Solenoid, Electro-hydraulic, Joystick and Electro-pneumatic Control 手控、气控、电液控、电磁控、电气控、一控二手柄控制	

拖拉机专用阀 Hydraulic Distributor For Tractors

MP80



Structure	结构	Monoblock 整体式	
Rated Flow	额定流量	80 L/min	21 US GPM
Max Pressure	最大压力	20 Mpa	2900 PSI
Controlling Method	控制方式	Manual Control 手控	

MPC70



Structure	结构	Monoblock 整体式	
Rated Flow	额定流量	70 L/min	18.5 US GPM
Max Pressure	最大压力	31.5 Mpa	4600 PSI
Controlling Method	控制方式	Manual Control 手控	

DF50



Structure	结构	Monoblock 整体式	Sectional 分片式
Rated Flow	额定流量	50 L/min	13.2 US GPM
Max Pressure	最大压力	25 Mpa	3626 PSI
Controlling Method	控制方式	Manual, Joystick Control 手控、一控二手柄控制	

拖拉机专用阀 Hydraulic Distributor For Tractors

DF80



Structure	结构	Monoblock 整体式	Sectional 分片式
Rated Flow	额定流量	80 L/min	21.0 US GPM
Max Pressure	最大压力	25 Mpa	3626 PSI
Controlling Method	控制方式	Manual, Joystick Control 手控、一控二手柄控制	

扫雪机专用阀 Snowplow Valve

SDY20/32



Structure	结构	Monoblock 整体式	
Rated Flow	额定流量	100 / 250L/min	26.4 / 66 US GPM
Max Pressure	最大压力	25 Mpa	3626 PSI
Controlling Method	控制方式	Solenoid Control 电磁控	

QSF32



Structure	结构	Sectional 分片式	
Rated Flow	额定流量	250 L/min	66 US GPM
Max Pressure	最大压力	20 Mpa	2900 PSI
Controlling Method	控制方式	Solenoid Control 电磁控	

切换阀 Diverter Valve

HSV06



Structure	结构	Solenoid Diverter Valve	电磁式分流阀
Rated Flow	额定流量	50 L/min	13.2 US GPM
Max Pressure	最大压力	20 Mpa	2900 PSI
Controlling Method	控制方式	Solenoid Control 电磁控	

切换阀 Diverter Valve



HSV09

Structure	结构	Solenoid Diverter Valve 电磁式分流阀	
Rated Flow	额定流量	90 L/min	23.8 US GPM
Max Pressure	最大压力	20 Mpa	2900 PSI
Controlling Method	控制方式	Solenoid Control 电磁控	



HSDF5

Structure	结构	Monoblock 整体式	
Rated Flow	额定流量	45 L/min	11.8 US GPM
Max Pressure	最大压力	31.5 Mpa	4600 PSI
Controlling Method	控制方式	Manual Control 手控	



HSDV10

Structure	结构	Monoblock 整体式	
Rated Flow	额定流量	90 L/min	23.8 US GPM
Max Pressure	最大压力	31.5 Mpa	4600 PSI
Controlling Method	控制方式	Manual Control 手控	

LKF系列流量控制阀 LKF series



LKF

Structure	结构	Monoblock 整体式	
Max Flow	最大流量	40/60/114 L/min	10.6/15.9/30.2 US GPM
Max Pressure	最大压力	31.5 Mpa	4600 PSI
LKF 40 Flow range	流量范围	0~40 L/min	0~10.6 US GPM
LKF 60 Flow range	流量范围	0~60 L/min	0~15.9 US GPM
LKF 114 Flow range	流量范围	0~114 L/min	0~30.2 US GPM

RD系列 RD Series



RD5100

Structure	结构	Monoblock 1 Levers 整体式1联	
Rated Flow	额定流量	100 L/min	26.2 US GPM
Max Pressure	最大压力	30Mpa	4351 PSI
Controlling Method	控制方式	Manual Control 手控	



RD5200

Structure	结构	Monoblock 2 Levers 整体式2联	
Rated Flow	额定流量	100 L/min	26.2 US GPM
Max Pressure	最大压力	30 Mpa	4351 PSI
Controlling Method	控制方式	Manual Control 手控	



RD5300

Structure	结构	Monoblock 3 Levers 整体式3联	
Rated Flow	额定流量	100 L/min	26.2 US GPM
Max Pressure	最大压力	30 Mpa	4351 PSI
Controlling Method	控制方式	Manual Control 手控	

ZT系列 ZT Series



ZT12

Structure	结构	Monoblock 整体式	
Rated Flow	额定流量	45 L/min	11.5 US GPM
Max Pressure	最大压力	25 Mpa	3626 PSI
Controlling Method	控制方式	手控、气控、电液控、电磁控、电气控、一控二手柄控制 Manual, Pneumatic, Solenoid, Electro-hydraulic, Joystick and Electro-pneumatic Control	

ZT系列 ZT Series



ZT20

Structure	结构	Monoblock 整体式	
Rated Flow	额定流量	100 L/min	26.4 US GPM
Max Pressure	最大压力	25 Mpa	3626 PSI
Controlling Method	控制方式	Manual, Pneumatic, Solenoid, Electro-hydraulic, Joystick and Electro-pneumatic Control 手控、气控、电液控、电磁控、电气控、一控二手柄控制	

DL系列 DL Series



DL15

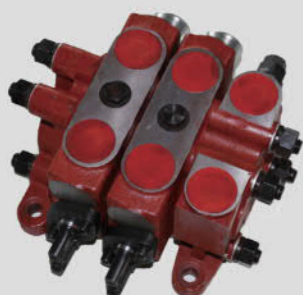
Structure	结构	Monoblock 整体式	
Rated Flow	额定流量	63 L/min	16.6 US GPM
Max Pressure	最大压力	25 Mpa	3626 PSI
Controlling Method	控制方式	Manual Control, Pneumatic Control, Hydrau-Control 手控、气控、液控	



DL20

Structure	结构	Monoblock 整体式	
Rated Flow	额定流量	100 L/min	26.4 US GPM
Max Pressure	最大压力	25 Mpa	3626 PSI
Controlling Method	控制方式	Manual Control, Pneumatic Control, Hydrau-Control 手控、气控、液控	

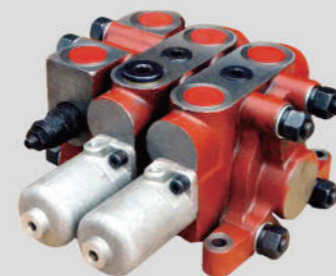
ZL系列 ZL Series



ZL15

Structure	结构	Sectional 分片式	
Rated Flow	额定流量	63 L/min	16.6 US GPM
Max Pressure	最大压力	25 Mpa	3626 PSI
Controlling Method	控制方式	Manual Control, Pneumatic Control, Hydrau-Control 手控、气控、液控	

ZL系列 ZL Series



ZL20

Structure	结构	Sectional 分片式	
Rated Flow	额定流量	100 L/min	26.4 US GPM
Max Pressure	最大压力	25 Mpa	3626 PSI
Controlling Method	控制方式	Manual Control, Pneumatic Control, Hydrau-Control 手控、气控、液控	

柱塞泵 Piston Pump



P9-80

Structure	结构	斜盘式结构 Cam plate type	
Material	材质	Cast Iron 铸铁	
Rated Displacement	排量	80 cc/rev	
Rated Pressure	额定压力	25Mpa/3626 PSI	Rated Speed 额定转速
			1300 r/min



P7-63

Structure	结构	斜盘式结构 Cam plate type	
Material	材质	Cast Iron 铸铁	
Rated Displacement	排量	63 cc/rev	
Rated Pressure	额定压力	25Mpa/3626 PSI	Rated Speed 额定转速
			1300 r/min

单泵系列 Single Pump Series



C101/C102

Structure	结构	外啮合齿轮泵 External gear pump	
Material	材质	Cast Iron 铸铁	
Rated Displacement	排量	90/112 cc/rev	
Rated Pressure	额定压力	17Mpa/2465 PSI 20Mpa/2920PSI	Rated Speed 额定转速
			2500 r/min

单泵系列 Single Pump Series



CBHST1-SK

Structure 结构	外啮合齿轮泵 External gear pump		
Material 材质	Cast Iron 铸铁		
Rated Displacement 排量	28/32/40/63/80/90/100/110/120 cc/rev		
Rated Pressure 额定压力	23Mpa/3300PSI	Rated Speed 额定转速	2000 r/min



CBHST1

Structure 结构	外啮合齿轮泵 External gear pump		
Material 材质	Cast Iron 铸铁		
Rated Displacement 排量	28/32/40/63/80/90/100/110/120 cc/rev		
Rated Pressure 额定压力	23 Mpa/3330 PSI	Rated Speed 额定转速	2000 r/min



CBHST2

Structure 结构	外啮合齿轮泵 External gear pump		
Material 材质	Cast Iron 铸铁		
Rated Displacement 排量	80/100 cc/rev		
Rated Pressure 额定压力	23 Mpa/3330 PSI	Rated Speed 额定转速	2000 r/min



CBHST4

Structure 结构	外啮合齿轮泵 External gear pump		
Material 材质	Cast Iron 铸铁		
Rated Displacement 排量	80/100 cc/rev		
Rated Pressure 额定压力	23 Mpa/3330 PSI	Rated Speed 额定转速	2000 r/min

单泵系列 Single Pump Series



CBHST5

Structure 结构	内啮合齿轮泵 Internal gear pump		
Material 材质	Cast Iron 铸铁		
Rated Displacement 排量	80/100 cc/rev		
Rated Pressure 额定压力	23 Mpa/3330 PSI	Rated Speed 额定转速	2000 r/min



CBHC

Structure 结构	外啮合齿轮泵 External gear pump		
Material 材质	Aluminium cast iron 铝夹铁		
Rated Displacement 排量	16/20 cc/rev		
Rated Pressure 额定压力	20Mpa/2920 PSI	Rated Speed 额定转速	2000 r/min



NSH10

Structure 结构	外啮合齿轮泵 External gear pump		
Material 材质	Aluminium 铝		
Rated Displacement 排量	6/10/14/16/25 cc/rev		
Rated Pressure 额定压力	20Mpa/2920 PSI	Rated Speed 额定转速	500 r/min



NSH32

Structure 结构	外啮合齿轮泵 External gear pump		
Material 材质	Aluminium 铝		
Rated Displacement 排量	32/40 cc/rev		
Rated Pressure 额定压力	20Mpa/2920 PSI	Rated Speed 额定转速	500 r/min

单泵系列 Single Pump Series



NSH50

Structure 结构	外啮合齿轮泵 External gear pump		
Material 材质	Aluminium 铝		
Rated Displacement 排量	50/100 cc/rev		
Rated Pressure 额定压力	20Mpa/2920 PSI	Rated Speed 额定转速	500 r/min



JHP1

Structure 结构	外啮合齿轮泵 External gear pump		
Material 材质	Cast Iron 铸铁		
Rated Displacement 排量	32/45 cc/rev		
Rated Pressure 额定压力	20Mpa/2920 PSI	Rated Speed 额定转速	2000 r/min



JHP2

Structure 结构	外啮合齿轮泵 External gear pump		
Material 材质	Cast Iron 铸铁		
Rated Displacement 排量	40/50/63/80/100 cc/rev		
Rated Pressure 额定压力	20Mpa/2920 PSI	Rated Speed 额定转速	2200 r/min



JHP3

Structure 结构	外啮合齿轮泵 External gear pump		
Material 材质	Cast Iron 铸铁		
Rated Displacement 排量	100/125/140/160/180 cc/rev		
Rated Pressure 额定压力	20Mpa/2900 PSI	Rated Speed 额定转速	2200 r/min

单泵系列 Single Pump Series



JHP3-P7600

Structure 结构	外啮合齿轮泵 External gear pump		
Material 材质	Cast Iron 铸铁		
Rated Displacement 排量	160 cc/rev		
Rated Pressure 额定压力	25Mpa/3626 PSI	Rated Speed 额定转速	2200 r/min



CBG1

Structure 结构	外啮合齿轮泵 External gear pump		
Material 材质	Cast Iron 铸铁		
Rated Displacement 排量	32/45 cc/rev		
Rated Pressure 额定压力	16Mpa/2336 PSI	Rated Speed 额定转速	2200 r/min



CBG2

Structure 结构	外啮合齿轮泵 External gear pump		
Material 材质	Cast Iron 铸铁		
Rated Displacement 排量	40/50/63/80/100 cc/rev		
Rated Pressure 额定压力	16Mpa/2336 PSI	Rated Speed 额定转速	2200 r/min



CBG3

Structure 结构	外啮合齿轮泵 External gear pump		
Material 材质	Cast Iron 铸铁		
Rated Displacement 排量	100/125/140/160 cc/rev		
Rated Pressure 额定压力	16Mpa/2336 PSI	Rated Speed 额定转速	2200 r/min

单泵系列 Single Pump Series



CBGJ1

Structure 结构	外啮合齿轮泵 External gear pump		
Material 材质	Cast Iron 铸铁		
Rated Displacement 排量	32/45 cc/rev		
Rated Pressure 额定压力	20Mpa/2900 PSI	Rated Speed 额定转速	2200 r/min



CBGJ2

Structure 结构	外啮合齿轮泵 External gear pump		
Material 材质	Cast Iron 铸铁		
Rated Displacement 排量	40/50/63/80/100 cc/rev		
Rated Pressure 额定压力	20Mpa/2900 PSI	Rated Speed 额定转速	2200 r/min



CBGJ3

Structure 结构	外啮合齿轮泵 External gear pump		
Material 材质	Cast Iron 铸铁		
Rated Displacement 排量	100/125/140/160 cc/rev		
Rated Pressure 额定压力	20Mpa/2900 PSI	Rated Speed 额定转速	2200 r/min

双联泵系列 Double Pump Series



CBHST-L

Structure 结构	外啮合齿轮泵 External gear pump		
Material 材质	Cast Iron 铸铁		
Rated Displacement 排量	100-20 cc/rev		
Rated Pressure 额定压力	20Mpa/2900 PSI	Rated Speed 额定转速	2000 r/min

双联泵系列 Double Pump Series



CBHS-DL1

Structure 结构	外啮合齿轮泵 External gear pump		
Material 材质	Cast Iron 铸铁		
Rated Displacement 排量	80-20 cc/rev, 100-20 cc/rev		
Rated Pressure 额定压力	23Mpa/3358 PSI	Rated Speed 额定转速	2000 r/min



JHP-DP

Structure 结构	外啮合齿轮泵 External gear pump		
Material 材质	Cast Iron 铸铁		
Rated Displacement 排量	63-16,80-10,100-10 cc/rev		
Rated Pressure 额定压力	23-3Mpa/3358-438 PSI	Rated Speed 额定转速	2200 r/min



CBGJ-DP

Structure 结构	外啮合齿轮泵 External gear pump		
Material 材质	Cast Iron 铸铁		
Rated Displacement 排量	63-16,80-10,50-50;63-63,100-10 cc/rev		
Rated Pressure 额定压力	23-3 Mpa/3358-438 PSI	Rated Speed 额定转速	2200 r/min

三联泵系列 Tribble Pump Series



CBGJ-TP

Structure 结构	外啮合齿轮泵 External gear pump		
Material 材质	Cast Iron 铸铁		
Rated Displacement 排量	63-63-25,50-50-25,40-40-25 cc/rev		
Rated Pressure 额定压力	20Mpa/2920 PSI	Rated Speed 额定转速	2000 r/min

BZZ1系列 BZZ1 Series



BZZ1-50C

Material 材质	Cast Iron 铸铁
Rated Displacement 排量	50 cc/r
Recommend Flow Rate 推荐流量	4 L/Min
Valve Block 阀块	Customized 可定制



BZZ1-80C

Material 材质	Cast Iron 铸铁
Rated Displacement 排量	80 cc/r
Recommend Flow Rate 推荐流量	6 L/Min
Valve Block 阀块	Customized 可定制



BZZ1-100C

Material 材质	Cast Iron 铸铁
Rated Displacement 排量	100 cc/r
Recommend Flow Rate 推荐流量	7.5 L/Min
Valve Block 阀块	Customized 可定制



BZZ1-160C

Material 材质	Cast Iron 铸铁
Rated Displacement 排量	160 cc/r
Recommend Flow Rate 推荐流量	9.5 L/Min
Valve Block 阀块	Customized 可定制

BZZ5系列 BZZ5 Series



BZZ5-200/250C

Material 材质	Cast Iron 铸铁
Rated Displacement 排量	200/250 cc/r
Recommend Flow Rate 推荐流量	15/19 L/Min
Valve Block 阀块	Customized 可定制



BZZ5-315C

Material 材质	Cast Iron 铸铁
Rated Displacement 排量	315 cc/r
Recommend Flow Rate 推荐流量	24 L/Min
Valve Block 阀块	Customized 可定制



BZZ5-500C

Material 材质	Cast Iron 铸铁
Rated Displacement 排量	500 cc/r
Recommend Flow Rate 推荐流量	38 L/Min
Valve Block 阀块	Customized 可定制



BZZ5-800C

Material 材质	Cast Iron 铸铁
Rated Displacement 排量	800 cc/r
Recommend Flow Rate 推荐流量	60 L/Min
Valve Block 阀块	Customized 可定制