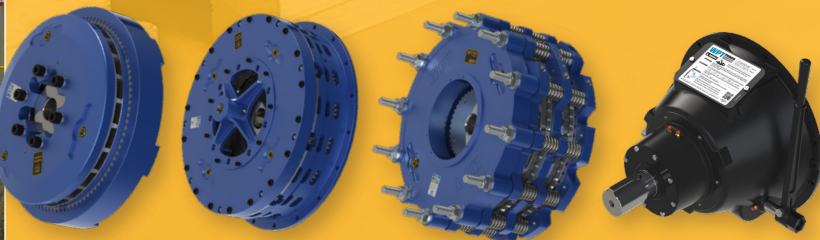


WPT[®] POWER

Product Line Overview





Industrial Clutch, Brake, and Power Take-Off Manufacturer

Founded in Wichita Falls, Texas in 1992, WPT® Power Corporation has built an international reputation for excellence in the mechanical power transmission industry. We manufacture heavy-duty pneumatic, hydraulic, mechanical, and spring-set industrial brakes, clutches, power take-offs, and gearboxes.

The engineering and manufacturing processes for all our product lines follow the ISO 9001-2015 standard as certified by DNV. In-house testing facilities and certifications, including ABS, DNV, and ATEX, ensure you are getting the highest quality products.

Our long history of designing standard and custom solutions means our products have proven real-world performance. This makes them ideal for Energy, Agriculture, Dynamometer, Forestry, Marine, Metal Forming, Mining, Off-Highway, Paper/Converting, and Steel industry applications.

We are committed to delivering the best customer experience from initial development to long-term maintenance. That is what makes WPT different and why we have become a global leader in the industry.



▶ Page 2	<hr/> Engine Driven Products
▶ Page 6	<hr/> Industrial Clutch Products
▶ Page 8	<hr/> Industrial Brake Products
▶ Page 11	<hr/> Winches, Hoists, and Rotation Gearboxes
▶ Page 12	<hr/> Custom OEM Solutions
▶ Page 13	<hr/> Additional Resources

WPT Power is constantly striving to improve and develop our product range. For this reason, WPT Power reserves the right to make product changes without prior notice. Every effort has been made to ensure that the

dimensions, performance, specifications, etc. are correct at the time of printing. For more information, please contact your authorized WPT Power distributor or visit: WPTpower.com.



Pilotless® Mechanical

The Pilotless® Mechanical is the next evolution in over-center Power Take-Offs (PTOs). The unique design eliminates the pilot bearing and increases side load capacity. The Pilotless® Mechanical PTO will optimize your cost by reducing inventory, increasing uptime and engine life, and simplifying installation.

Features

- Dual spherical roller main bearing design
- Time-saving assembly with no pilot bearing alignment required
- No direct loading to crankshaft increases life of engine main bearings
- Up to 70 percent increase in sideload capacity
- Standard, HD Molded, and HD Laminated friction options

Specifications

- Configurations: 1-, 2-, and 3-plate
- Available Sizes: 6-inch through 14-inch
- Torque Range: 214 lbf-ft [290 Nm] to 3230 lbf-ft [4380 Nm]
- SAE Housings: 5, 4, 3, 2, 1, and 0



Pilotless® Over-the-Shaft

The Pilotless® Over-the-Shaft (OTS) PTO is engineered to meet the most demanding diesel engine applications. This design eliminates the pilot bearing while increasing side load capacity. The OTS PTO features radial pneumatic or hydraulic actuation so that it can be utilized for in-line or side load applications.

Features

- Radial input for actuation fluid
- Self-adjusting hydraulic or pneumatic clutch pack
- Dual spherical roller main bearing design
- Compatible with the WPT HPU hydraulic starting option
- Standard, HD Molded, and HD Laminated friction options

Specifications

- Configurations: 2- and 3-plate
- Available Sizes: 11-inch through 14-inch
- Torque Range: 810 lbf-ft [1100 Nm] to 2780 lbf-ft [3770 Nm]
- SAE Housings: 3, 2, 1, and 0



Mechanical

The Mechanical PTO is a lever-actuated over-center clutch with a shaft and bearings mounted in a rigid iron bell housing. Designed for both inline and sideloaded applications on internal combustion engines with compatible SAE industrial flywheel and flywheel housings.

Features

- Sealed-for-life pilot and throw-out bearings eliminate lubrication-related issues
- Ductile iron drive rings come standard on all models
- Custom drop-in units available for OEM applications
- Standard, HD Molded, and HD Laminated friction options

Specifications

- Configurations: 1-, 2-, and 3-plate
- Available Sizes: 6-inch through 18-inch
- Torque Range: 214 lbf-ft [290 Nm] to 8080 lbf-ft [11000 Nm]
- SAE Housings: 5, 4, 3, 2, 1, 0, and 00



View **Engine Driven Products** Brochure



OEM Clutch Pack

The OEM Clutch Pack is the perfect solution for gearbox manufacturers looking for mechanical, pneumatic, or hydraulic disconnect options. These assemblies are designed to be mounted on the input side of a gearbox. Kits can be customized with different combinations of friction material, drive rings, and bell housings.

Features

- Custom drop-in designs for fast, easy installations
- Multiple actuation options for flexibility
- Standard, HD Molded, and HD Laminated friction options

Specifications

- Configurations: 1-, 2-, and 3-plate
- Available Sizes: 6- through 18-inch (mechanical) and 10- through 21-inch (pneumatic and hydraulic)
- Torque Range: 214 lbf-ft [290 Nm] to 13,500 lbf-ft [18300 Nm]
- Housing Sizes: 5, 4, 3, 2, 1, 0, and 00



Automotive Style

The Automotive Style Power Take-off (PTO) is loaded with features. This PTO is designed for flat-faced flywheels in marine, industrial, construction, brush chipper, and irrigation applications. The linkage assembly is in the bell housing to prevent debris and rodents from interfering with the operation.

Features

- No pilot bearing reduces failures and downtime
- Torsionally-dampened spring-loaded clutch
- Quick and easy external adjustments

Specifications

- Configurations: 1-plate Standard and Heavy-duty, 2-plate (15.5-inch only)
- Available Sizes: 11-, 13-, and 15.5-inch
- Torque Range: 412 lbf-ft [560 Nm] to 1650 lbf-ft [2200 Nm]
- Housing Sizes: 3 and 1



GM® Style

The GM® Style PTO mounts directly to GM® engines without any adaptations to the engine or PTO. Eliminating the pilot bearing and utilizing sealed main bearings reduces maintenance time and costs. External heavy-duty ball screw with a jam nut makes adjustments for wear quick and easy.

Features

- Mounts directly to GM® 4.3, 5.7, 6.2, 7.4 & 8.1 liter engines
- Bellhousing is built for heavy-duty applications, keeping out weather and other contaminants
- Heavy-duty adjustment ball screw with jam nut adjusts quickly and easily

Specifications

- Configurations: 1-plate Standard and Heavy-duty (bearings)
- Available Size: 11-inch
- Torque: 386 lbf-ft [523 Nm]
- Housing Size: GM





Type 1

The Type 1 PTO is one of the most rugged, highest-capacity products available on the market today. With the sheave mounted between the bearings, these power take-offs are designed to attain the maximum potential of their massive spherical roller bearings. Multiple sizes and multiple actuation options make this a versatile choice as well.

Features

- Large, independently greased main bearings
- Straddle bearing arrangement
- Available in mechanical (14-inch only), air, or hydraulic actuation
- Easy belt removal
- Compatible with Python® and HPU hydraulic starting options
- Comes standard with HD friction material

Specifications

- Configurations: 3-plate Standard and Extended Housing
- Available Sizes: 14-, 18-, and 21-inch
- Torque Range: 3,230 lbf-ft [4380 Nm] to 13,500 lbf-ft [18300 Nm]
- Housing Sizes: 1, 0, and 00



Type 2

The Type 2 is a high-capacity Power Take-off (PTO). With a versatile design, dry clutch, and top-of-the-line spherical roller bearings, the Type 2 PTO has been field-proven in many applications. Air or hydraulic actuation options make this PTO easy to integrate into your equipment. Pair with the Python® or HPU for remote engagement options.

Features

- Self-adjusting clutch pack
- Compatible with Python® and HPU hydraulic starting options
- Bearings are lubricated with either grease or oil
- Standard, HD Molded, and HD Laminated friction options

Specifications

- Configurations: 1-, 2-, and 3-plate
- Available Sizes: 11-inch through 18-inch
- Torque Range: 700 lbf-ft [950 Nm] to 7100 lbf-ft [9600 Nm]
- Housing Sizes: 3, 2, 1, and 0



Belt-Driven Pump Drive

The Belt-Driven Pump Drive is designed to provide an auxiliary pump pad for light- to medium-duty applications. A compact and lightweight design makes this perfect for space-conscious equipment. The main output allows for a variety of equipment compatible with standard SAE flywheels and flywheel housings to be used.

Features

- Can be rotated 360 degrees in twelve different positions
- Multiple input mounting options
- Two pump mounting pads
- Available with SAE B pump pad

Specifications

- Configurations: Single Head Belt-drive
- Torque Range: 230 lbf-ft [310 Nm] to 630 lbf-ft [860 Nm]
- Housing Sizes (Input): 5, 4, and 3 Housing Sizes (Output): 4 and 3
- Flywheel Sizes (Input): 7.5-, 10-, and 11.5-inch, Flywheel Sizes (Output): 10- and 11.5-inch
- Head Power Range: 58 hp [43 kW] to 160 hp [120 kW]



View [Engine Driven Products](#) Brochure



Gear-Driven Pump Drive

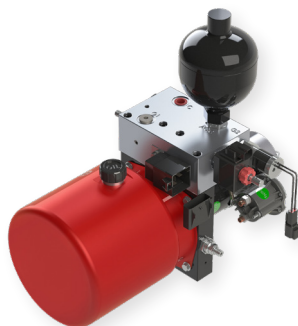
The Gear-Driven Pump Drive is designed to mount to a standard diesel engine flywheel and flywheel housing. It provides multiple SAE pump and motor flange mounts. All models include a flexible coupling on the input. The Pump Drive can be provided with a variety of SAE engine housings, power take-off clutches, and accessories. Larger models feature an optional heat exchanger.

Features

- Modular design for greater flexibility
- Self-contained bearing and spline lubrication
- Multiple models for design flexibility
- Up to eight pump mounting pads available in various SAE pump flange sizes

Specifications

- Configurations: Dual and Modular Head Gear-drive
- Torque Range: 1475 lbf-ft [2000 Nm] to 4650 lbf-ft [6300 Nm]
- Housing Sizes (Input): 3, 2, 1, and 0 Housing Sizes (Output): 3, 1, and 0
- Flywheel Sizes (Input): 11.5-, 14-, and 18 inch, Flywheel Sizes (Output): 11.5-, 14-, and 18-inch
- Head Power Range: 235 hp [175 kW] to 535 hp [400 kW]



Hydraulic Power Unit

The Hydraulic Power Unit (HPU) is the ideal power source to operate any WPT Hydraulic Power Take-Off (PTO). Available in 12 or 24 VDC, the WPT HPU is designed to simplify installation and minimize maintenance. All WPT Hydraulic Power Packs are factory set to the pressure requirements of your PTO application.

Features

- Large 0.8 gal (3 L) fluid reservoir
- Easy lockout/tagout with removable key
- Thermal overload protection

Specifications

- Voltage: 12 or 24 VDC
- Pressure Range: 160 psi [11 bar] to 675 psi [47 bar]
- Flow: 1.4 gal/min [5.3 l/min]
- Applicable Products: Type 1, Type 2, and OTS PTOs



Python®

The patented Python® Hydraulic Clutch Control (HCC) is engineered to engage any WPT Type 1 and Type 2 PTO smoothly. No more bump starting that can stall or damage the engine. The Python® was designed and tested alongside seasoned experts in the Off-Highway Equipment industry.

Features

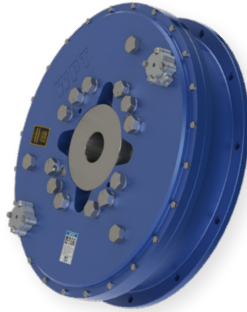
- Eliminates operator-related engagement abuse
- Easy integration into OEM control system
- Self-contained unit, no need for machine hydraulics
- Compatible with SAE J1939 engine connections

Specifications

- Voltage: 12 or 24 VDC
- Pressure: 500 psi [35 bar]
- Ambient Temperature: -10 F [-25 C] to 110 F [43 F]
- Applicable Products: Type 1 and Type 2 PTOs



Industrial Clutches



Power Grip PO

The Power Grip PO Clutch is a pneumatic clutch suitable for inline or shaft-to-shaft applications. This design utilizes a large diaphragm that compensates for wear during the life of the friction material, with no adjustment necessary. Standard Quick Release Valves ensures swift disengagements. The manual mechanical lockup feature allows clutch engagement in the event of air system failure.

Features

- Large diaphragm provides high torque capacity throughout life of friction discs
- Oversized release springs ensure quick, positive disengagement
- Plate separators reduce and minimize drag
- Mechanical lockup function is standard on all sizes

Specifications

- Configurations: 1-, 2-, and 3-plate
- Available Sizes: 14-inch through 42-inch
- Torque Range: 38,400 lbf-in [4340 Nm] to 3,370,000 lbf-in [380800 Nm]



Power Grip

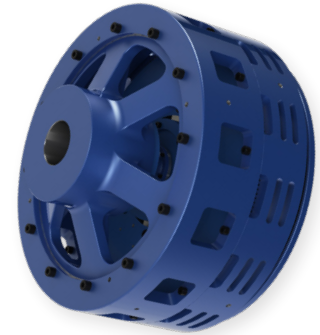
The Power Grip Clutch is designed to accommodate in-line and shaft-to-shaft power transmission applications with large inertia loads. Multiple actuator designs allow seamless, controlled engagement and disengagement. Power Grip clutches allow for quick response, space-saving footprints, and minimal maintenance requirements.

Features

- Extended hub teeth design for easy serviceability
- Wave-style release springs are standard
- Optional standard or quick-change driving adapters for shaft to shaft applications
- Available in pneumatic or hydraulic actuation
- Available in High-speed options

Specifications

- Configurations: 1-, 2-, 3-, and 4-plate
- Available Sizes: 8-inch through 60-inch
- Torque Range: 7,560 lbf-in [854 Nm] to 11,100,000 lbf-in [1250000 Nm]



Power Grip Grinding Mill

The Power Grip Grinding Mill Clutch is the best heavy-duty option for ball, pebble, rod, AG, and SAG grinding mill applications. These Power Grip clutches are designed to deliver high torque with minimal air volume. High inertia loads are brought online quickly and smoothly. Optional axial locking device holds the motor shaft in magnetic center.

Features

- Reduces peak power demand for high load starts
- Disc design provide more torque capacity and lining area than drum style products
- Suitable for jogging and inching
- Available with axial locking device
- Quick-change Driving adapters for serviceability

Specifications

- Configurations: 2-, 3-, and 4-plate
- Available Sizes: 24-inch through 60-inch
- Torque Range: 330,000 lbf-in [37300 Nm] to 11,100,000 lbf-in [1250000 Nm]



View [Power Grip & Power Grip PO](#) Brochure



Low Inertia

The Low Inertia Clutch (LIC) is well-suited for high-cycle applications, such as steel shears and stamping presses. The LIC design reduces the rotational mass during starts and stops, allowing for increased cycles per minute and reduced deceleration times. This advantage also lends to reduced heat generation.

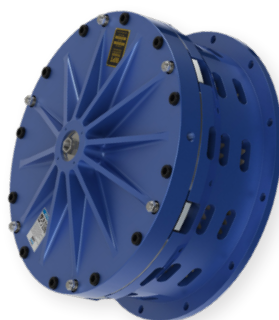
Features

- Predictable preventative maintenance
- Available in hydraulic or pneumatic actuation
- Solid, slotted, or ventilated center plate options
- Available with Full Marine Corrosion Protection package
- Compatible with the Power Performance LI upgrade

Specifications

- Configurations: 1-, 2-, 3-, and 4-plate
- Available Sizes: 6-inch through 60-inch
- Torque Range: 4,520 lbf-in [510 Nm] to 11,900,000 lbf-in [1340000 Nm]

View [Low Inertia Clutches and Brakes](#) Brochure



Low Inertia High Torque

The Low Inertia High Torque (LIHT) Clutch provides the highest torque-to-size ratio of any WPT product. A “pancake-style” airtube provides maximum actuator contact area to increase the clutch torque capacity. A large air connection is mounted directly to the airtube, allowing rapid clutch response time.

Features

- Predictable preventative maintenance
- Solid, slotted, or ventilated center plate options
- End-of-shaft mounting only

Specifications

- Configurations: 1-, 2-, and 3-plate
- Available Sizes: 11-inch through 36-inch
- Torque Range: 25,000 lbf-in [2820 Nm] to 2,870,000 lbf-in [3250000 Nm]



Mining

The Mining Clutch has been designed specifically for heavy-duty earthmoving equipment, such as rope shovels and draglines. These clutch units are suitable for pneumatic operation, have a variety of torque capacities and pressure settings, and can dissipate large thermal loads. Multiple hub options are available to provide installation flexibility.

Features

- Metallic or organic friction linings available
- Large surface area piston for maximum torque capacity
- Ventilated floating wear plate for improved heat dissipation
- End-of-shaft mounting only

Specifications

- Plate Configurations: 2-plate
- Available Sizes: 17-inch and 21-inch
- Torque Range: 163,000 lbf-in [18400 Nm] to 338,000 lbf-in [38100 Nm]

View [Mining Brakes and Clutches](#) Brochure



Industrial Brakes



Low Inertia

The Low Inertia Brake (LIB) is well-suited for high-cycle applications, such as steel shears. The LIB is a ventilated design to optimize the airflow in and out of the brake. This increased airflow allows the brake to run cooler in high-cycle applications.

Features

- Predictable preventative maintenance
- Available in hydraulic or pneumatic actuation
- Solid, slotted, or ventilated center plate options
- Available with Full Marine Corrosion Protection package
- Compatible with the Power Performance LI upgrade

Specifications

- Configurations: 1-, 2-, 3-, and 4-plate
- Available Sizes: 6-inch through 60-inch
- Torque Range: 4520 lbf-in [510 Nm] to 11,900,000 lbf-in [1340000 Nm]



Low Inertia Spring-Set

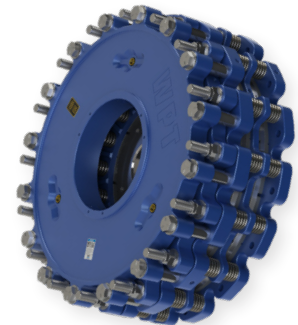
The Low Inertia Spring-set (LISS) Brake is a spring-applied / air- or hydraulic-release design best suited for fail-safe or E-stop applications. The LISS can also be used as a parking brake since no pressure is required to engage the brake. With adjustable spring-release pressures, the brake can provide a range of torques that will suit many applications.

Features

- Available in hydraulic or pneumatic actuation
- Solid, slotted, or ventilated center plate options
- Available in with Full Marine Corrosion Protection Package
- Type approval certifications available in DNV, ABS, or ATEX
- Compatible with the Power Performance LI upgrade

Specifications

- Configurations: 1-, 2-, 3-, and 4-plate
- Available Sizes: 6-inch through 60-inch
- Torque Range: 2,510 lbf-in [284 Nm] to 5,720,000 lbf-in [646000 Nm]



Pin Drive Spring-Set

The Pin Drive is a low inertia spring-set design that is well-suited for high energy applications. The radial stud arrangement has multiple plate configurations while allowing for quick and smooth operation. The fail-safe actuator design provides high torque stopping and parking options.

Features

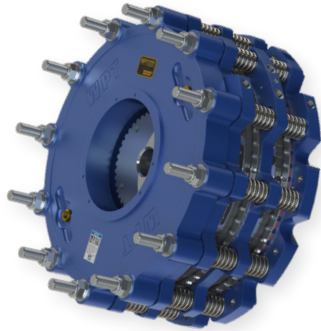
- Available in hydraulic or pneumatic release
- Parking or emergency brake design
- Available with Full Marine Corrosion Protection package
- Multiple friction lining options
- Type approval certifications available in DNV, ABS, and ATEX

Specifications

- Configurations: 2-, 3-, and 4-plate
- Available Size: 38-inch
- Torque Range: 1,418,600 lbf-in [160300 Nm] to 2,669,900 lbf-in [301700 Nm]



View [Low Inertia Clutches and Brakes](#) Brochure



Water Cooled Brake

The Water Cooled Brake (WCB) is a high-energy absorbing solution used for dynamic tensioning. The design of the internal water passages and copper alloy wear plates allow for excellent heat dissipation. The WCB is well-suited for applications where a heavy-duty continuous slip is needed, such as drawworks, mooring winches, dynamometers, paper converting, uncoilers, and yarders.

Features

- Available in hydraulic or pneumatic actuation
- Clutch configurations available
- Spring-applied with hydraulic or pneumatic release available
- Dual hydraulic or pneumatic actuation available
- Available with Full Marine Corrosion Protection package
- Type approval certifications available in DNV and ABS

Specifications

- Configurations: 1-, 2-, 3-, and 4-plate
- Available Sizes: 18-inch through 36-inch
- Torque Range: 36,300 lbf-in [4100 Nm] to 2,990,000 lbf-in [338000 Nm]
- Heat Dissipation Range: 144 hp [107 kW] to 3,120 hp [2330 kW]

View [Water Cooled Brakes](#) Brochure



Copper Water Cooled

The Copper Water Cooled (CWC) brake is designed for maximum heat transfer in a small package. The CWC is perfect for tension control equipment, coil processing, paper mill unwinding stands, and large inertia stops. The airtube actuator allows for smooth torque transitions while delivering peak performance.

Features

- O-ring water jacket design for same-day field service
- No outboard support required
- Standardized mounting for OEM applications, rebuilds, or retrofits
- Actuator is naturally corrosion resistant
- Legacy service parts available for additional sizes

Specifications

- Configurations: 1-, 2-, and 3-plate
- Available Sizes: 14-inch through 24-inch
- Torque Range: 12,400 lbf-in [1400 Nm] to 477,000 lbf-in [54000 Nm]
- Heat Dissipation Range: 75 hp [56 kW] to 855 hp [638 kW]



Steel Water Cooled

The Steel Water Cooled (SWC) brake is designed for high-heat applications, such as coil processors and high-cycle press / shear lines. The unique design of the steel water jackets allows for the rapid transfer of heat to an external cooler or recirculation system. This increased heat transfer capability enables the SWC to operate in continuous slip applications.

Features

- High cycle life
- Predictable preventative maintenance
- Low-inertia drive plate configuration
- Durable steel water jacket design
- Standardized mounting for OEM applications, rebuilds, or retrofits

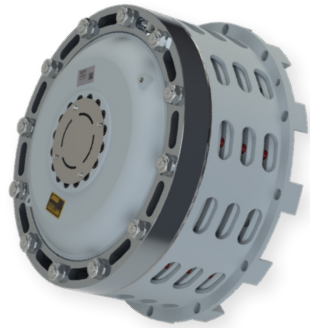
Specifications

- Configurations: 1-, 2-, and 3-plate
- Available Sizes: 6-inch through 24-inch
- Torque Range: 3,380 lbf-in [382 Nm] to 258,000 lbf-in [28200 Nm]
- Heat Dissipation Range: 6 hp [5 kW] to 190 hp [143 kW]

View [Low Inertia Clutches and Brakes](#) Brochure



Industrial Brakes



Mining

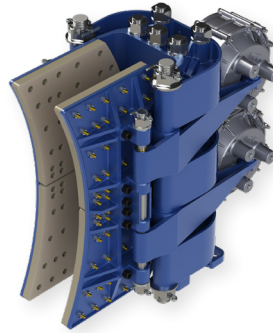
The Mining Brake is a spring-applied, air-released design specifically for heavy-duty earthmoving equipment, such as rope shovels and draglines. These brake units feature pneumatic operation, have a variety of torque capacities and pressure settings, and can dissipate large thermal loads. Multiple hub options are available to provide installation flexibility.

Features

- Metallic friction linings
- Available in vertical or horizontal mounting configurations
- Single piston design for high torque capacity
- Solid and ventilated floating wear plate
- Optional limit switches and wear indicators

Specifications

- Configurations: 1-, 2-, and 3-plate
- Available Sizes: 13-inch through 30-inch
- Torque Range: 21,700 lbf-in [2450 Nm] to 272,000 lbf-in [30700 Nm]



Industrial Caliper

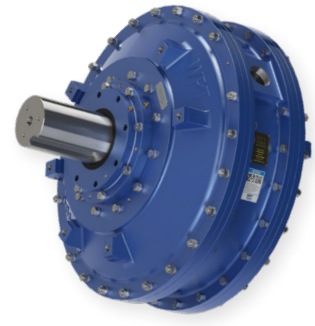
The Industrial Caliper Brake and Rotor are well-suited for applications that require a dependable, low-maintenance solution. The ductile iron saddle-frame design and anti-stress load transfer system work together to maximize equipment productivity. Lever-operated, adjustable, air-set actuators require minimal pressure while providing precise control.

Features

- Balancing links for even lining wear reducing downtime and repair costs
- Vented rotor design for maximum airflow and energy dissipation
- Ductile iron construction provided strength and cost effectiveness

Specifications

- Models: WDA-26 and WDA-28
- Available Rotor Sizes: 30-inch through 60.5-inch
- Torque Range: 15,300 lbf-ft [20800 Nm] to 49,700 lbf-ft [67400 Nm]



Hydrodynamic

The Hydrodynamic Brake is a water-cooled design that provides high-energy heat dissipation and deceleration. These brakes are perfect for the demands of oil drilling, workover rigs, cranes, marine winches, and any equipment that needs to dissipate excess energy. The field-proven design provides a rugged, easy-to-use auxiliary brake for speed control and heat dissipation.

Features

- Durable, rugged design for long-lasting operation
- Easy-to-use auxiliary speed control brake for drilling and workover rigs
- High-energy heat dissipation

Specifications

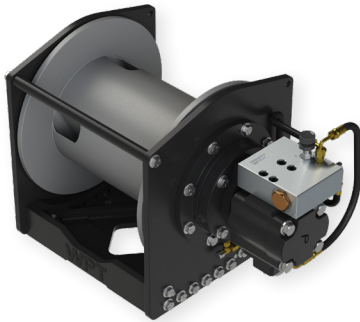
- Configuration: Counterclockwise rotation
- Available Size: 202
- Torque Capacity: 17,760 lbf-ft [24080 Nm]
- Heat Dissipation Capacity: 3000 hp [2240 kW]



View [Mining Brakes and Clutches](#) Brochure



View [Industrial Caliper Brakes](#) Brochure



Planetary Hydraulic Hoists and Winches

The Planetary Hydraulic Hoists and Winches feature an efficient two-stage planetary gear set. The multi-disc, spring-applied brake design ensures the load is safe and secure. The durable, yet compact footprint makes these units ideal for mobile equipment in the energy, utility, and construction markets.

Features

- Efficient two-stage hydraulic planetary design
- Multiple disc brake is spring-applied and hydraulically released
- Easily serviced compact design
- Manual override option available

Hoist Specifications

- Line Pull: 6,000 lbf [26 kN] to 12,000 lbf [53 kN]
- Line Speed: 10 ft/min [3 m/min] to 154 ft/min [47 m/min]
- Drum Capacities: 121 ft [34 m] to 438 ft [130 m]

Winch Specifications

- Line Pull: 6,800 lbf [30 kN] to 130,000 lbf [578 kN]
- Line Speed: 10 ft/min [3.2 m/min] to 260 ft/min [79 m/min]
- Drum Capacities: 111 ft [34 m] to 495 ft [151 m]



Worm Gear Winches

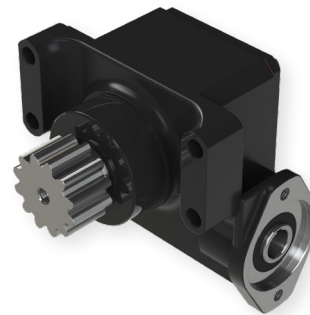
The Worm Gear Winch is available in hydraulic or electric operation. These small but mighty units are well-suited for applications in the towing and recovery, utility, oil and gas, crane, and construction markets. The extremely strong cast aluminum housings make these winches rugged and lightweight.

Features

- Robust worm gear design holds load even during power failure
- Hydraulic and 12 or 24 VDC electric operation available
- Available with manual- or air-shift operation

Specifications

- Line Pull: 9,000 lbf [40 kN] to 20,000 lbf [89 kN]
- Line Speed: 12 ft/min [3.5 m/min] to 22 ft/min [6.7 m/min]
- Drum Capacities: 98 ft [30 m] to 180 ft [54 m]



Rotation Gearbox

The Worm Rotation Gearbox integrates seamlessly with slewing ring bearings in applications that require boom rotation. Bronze gears and a hardened steel worm maximize performance efficiency. These units are ideal for utility, construction, and tree care applications. The Rotation Gearbox can also be customized to meet OEM requirements.

Features

- Hardened steel worm gear design
- Solid bronze gear set
- High shock load capacity
- Multiple input and output options
- Customizable to suit specific OEM requirements

Specifications

- Gear Ratios: 15:1 to 45:1 (custom OEM specifications available)
- Torque Range: 3,000 lbf-in [340 Nm] to 40,000 lbf-in [4520 Nm]

View [Winches and Hoists](#) Brochure



At WPT Power, custom engineering means developing a solution tailored to our customer's challenges. That solution can be the development of a new product, or a modification of existing technology. The scope of the project can be broad to extremely detailed. WPT's sales and engineering teams work directly with the customer to design a solution to meet the application requirements. If you don't see a standard WPT product that fits your application, please contact us today to discuss custom clutch, brake, power take-off, winch, and rotation gearbox options.



Low Inertia Spring-Set Hydraulic Release Brake

The WPT Low Inertia Spring-Set Hydraulic Release brake is an example of developing a product to meet customer needs. A marine winch OEM needed a high torque, marine-rated, hydraulic-release brake in a small space. To meet these requirements, we used our radial multi-piston release, custom FMCP package, and narrow steel center plates.

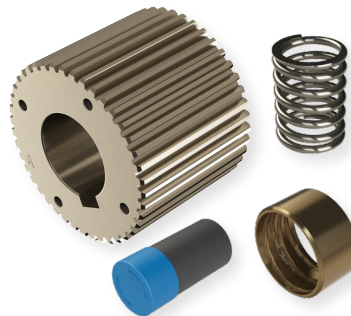


Hydraulic Type 2

This custom Hydraulic Type 2 PTO was engineered per the request of a roadbuilding OEM. They needed a high-capacity PTO with an integrated rubber input coupling and custom output flange. All within tight space requirements. To meet the design specifications, we started with our 314H hydraulic clutch pack and designed a complete custom PTO assembly.

Available Certifications

- ▶ **DNV** (*Det Norske Veritas*)
- ▶ **ABS** (*American Bureau of Shipping*)
- ▶ **ATEX** (*ATmospheres EXplosibles*)



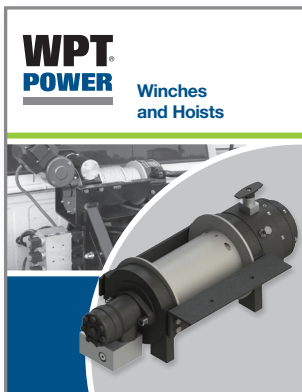
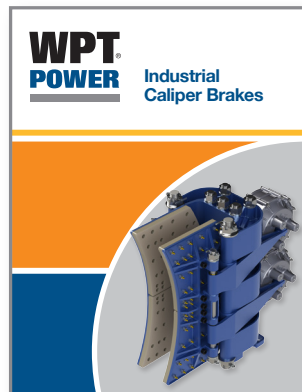
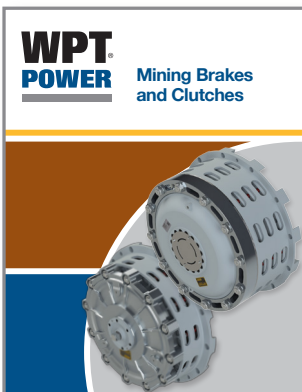
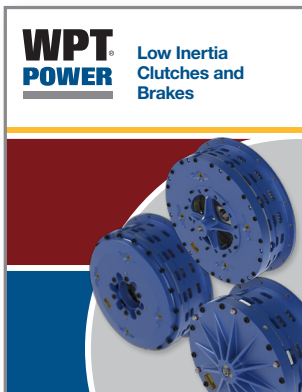
Full Marine Corrosion Package (FMCP)

The WPT Full Marine Corrosion Protection package delivers the defense needed for equipment running above deck or below deck in the harshest of saltwater environments.

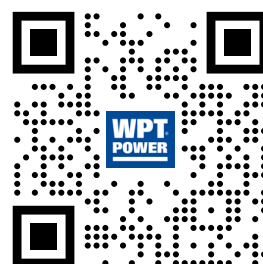


Power Performance Low Inertia (PPLI)

PPLI upgrade for clutch and brake products is specifically designed to meet the demands of high-cycle, high-energy, and high-speed applications. The PPLI upgrade is a high-grade semi-metallic friction material and a high flow, reduced inertia center plate design.



Scan for Brochures



WPT[®] POWER

Global resource network

Our qualified distributor network provides responsive and knowledgeable sales and technical support worldwide. WPT's customer care approach ensures your product needs will be met quickly and with minimum downtime – when and wherever you are.

Distributed by:

WPT Power Corporation

1600 Fisher Road
Wichita Falls, Texas 76305
U.S.A.

P.O. Box 8148
Wichita Falls, Texas 76307

+1 940-761-1971 Phone
WPTpower.com

WPT Power (Shanghai) Ltd.

No. 3-4 Building
669 MinTa Road
Songjiang, Shanghai, PRC
201617

+86-21-57847560 Phone
WPTpower.com.cn