

K
E
E
P
Y
O
U
M
O
V
I
N
G
A
H
E
A
D

CIMAC

O
F
F
-
T
H
E
-
R
O
A
D
W
H
E
E
L
S



CONTENTS

COMPANY

ABOUT US	_____	1
FACTORY	_____	5
TECHNIQUE	_____	7
QUALITY CONTROL	_____	10
QUALIFICATIONS	_____	14

WHEELS

CONSTRUCTION	_____	18
INDUSTRIAL	_____	22
MINING	_____	27
AGRICULTURAL	_____	30
COMMERCIAL VEHICLE	_____	36

SERVICE AND SOLUTION

SUPPORTS	_____	39
-----------------	-------	-----------



ABOUT US

CIMAC WHEEL was founded in 2013. Based in United States and China, CIMAC is globally supplying steel wheels to OEM and aftermarket customers in the Construction, Industrial, Mining, Agricultural and Commercial vehicle market.

With deep knowledge in the wheel market, that would include engineering, quality control methods and production management, CIMAC is a leader in its field.

We hold safety & reliability at the highest degree so our customers can be assured the design and production of all CIMAC products strictly comply to all of the worlds productions standards, (ETRTO, TRA, JATMA) Products are tested according to SAE & EUWA.

With our experience we gain a better understanding of the requirements of our customers and also of the production requirements needed to support the standards that are required in today's every changing market conditions.

We strive to expertly produce, paint, pack and ship your products with the highest standards being used - to make sure that you and your customers are satisfied with the end results.

Our motto " Products made to keep you moving ahead of the rest"





C ONSTRUCTION

I NDUSTRIAL

M INING

A GRICULTURAL

C OMMERCIAL VEHICLE



- SALES
- PRODUCTION
- WAREHOUSE

CIMAC WHEEL GLOBAL STRUCTURE



OUR MISSION

SAFETY

QUALITY

COST EFFECTIVE

CUSTOMIZATION



Single piece wheel up to 54 inches(Commercial, Agri & Construction)

Multi piece wheel up to 63 inches (Construction, Mining & Industrial)

Hot rolling steel components for off road wheels



Efficiency



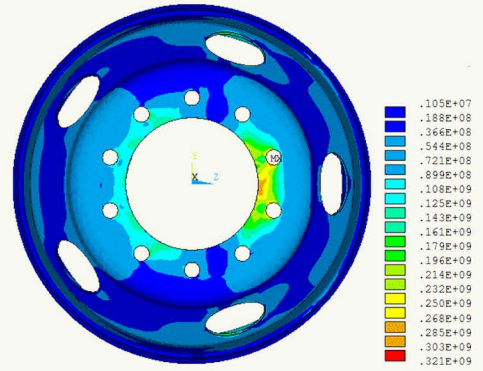
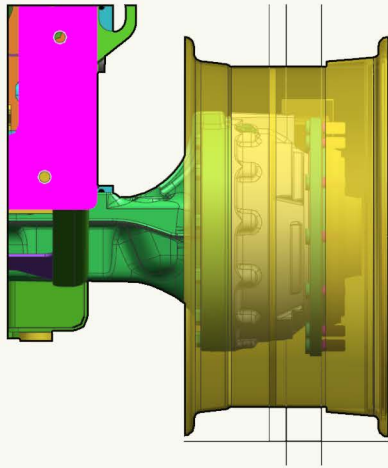
Production Management:

Flow line concept



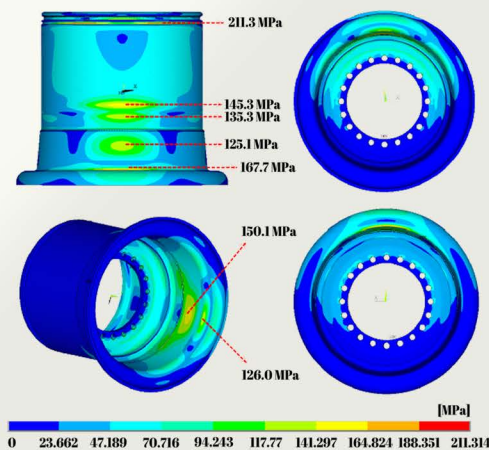
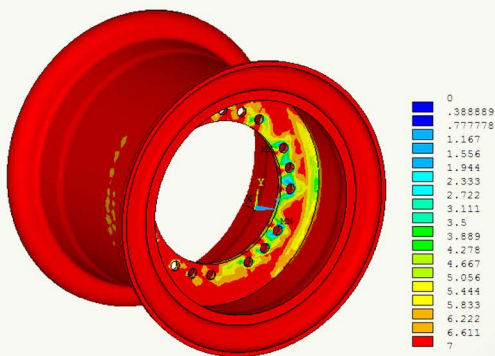
Benefit:

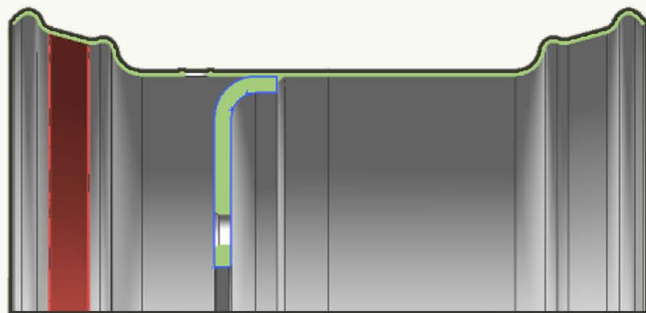
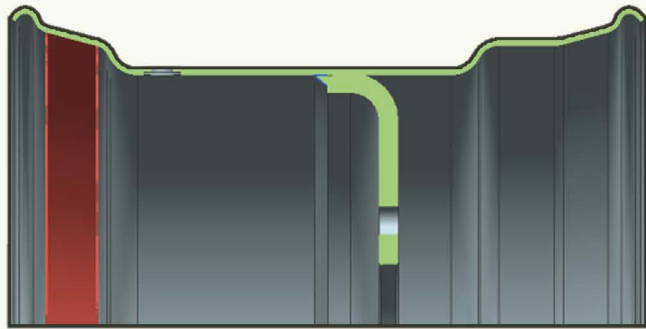
- 1) Quality consistence
- 2) Cost effectiveness



All CIMAC wheel strictly meet standard of TRA & ETRTO.

Earlier stage research include FEA , FEMA, and 3D Simulation.

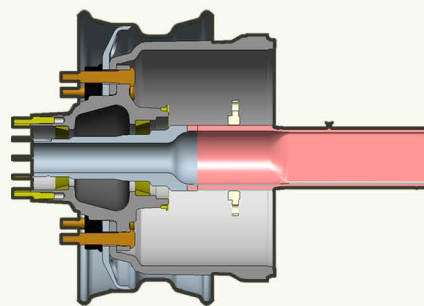
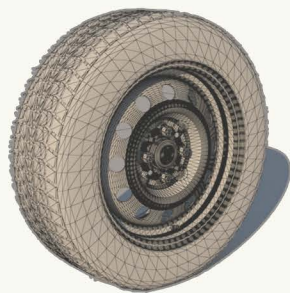
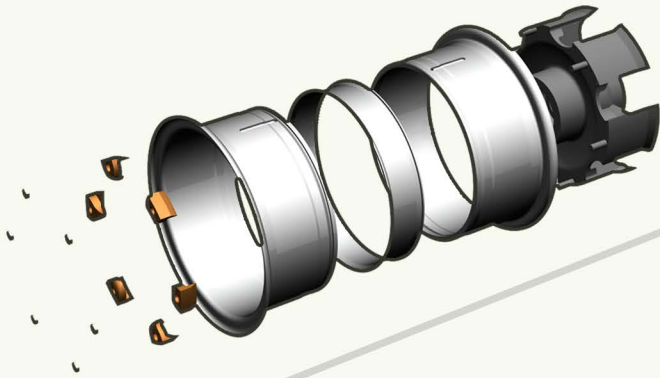




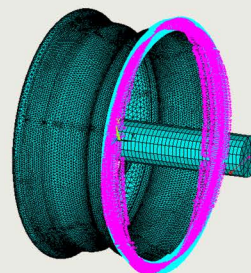
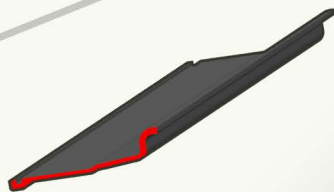
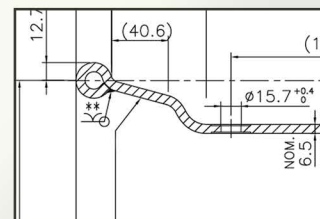
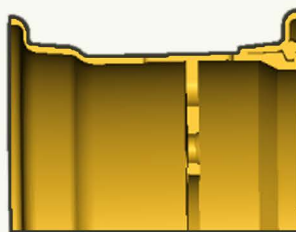
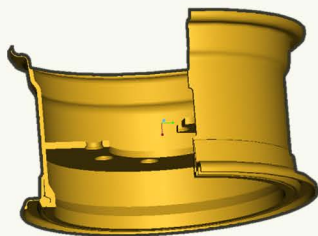
Optimized design protect tyre by increase width of bead seat

Optimized design prevent the tyre sliding by increase hump of bead seat

Optimized wheel design easy mounting tyre by increase depth of rim well



Focus On Performance

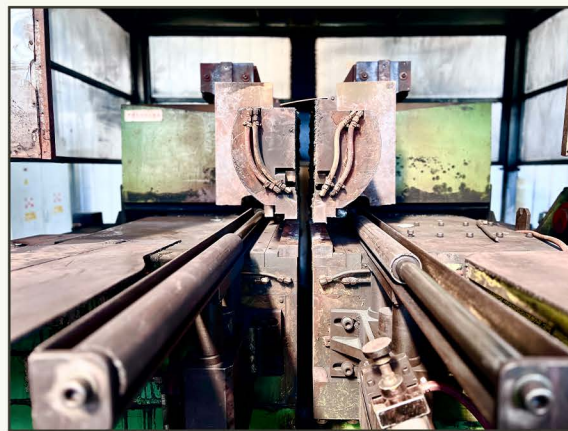


ELEMENTS
PowerGraphics
EFFECT=1
P
MFOR
MFOR
XV = .445996
YV = .397088
ZV = .802228
*DIST= .357748
*XF = .052093
*YF = .052094
*ZF = .016782
A=2004.952
Z=20788

Structural strength analysis of the new wheel



**Pulse Butt
Welding**



Painting

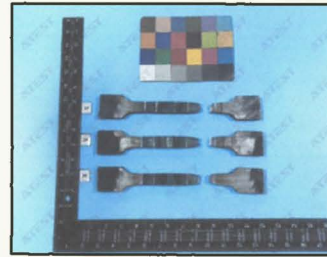
- E-coat + Powder coat / liquid coat**
- Eco friendly painting material**
- Fast color conversion function**



Bfore test

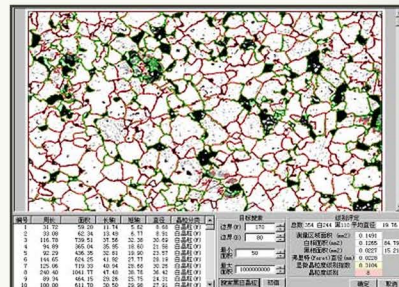


Testing



After test

CIMAC has rich experience on quality control for material, welding & painting.



Tire & Wheel Assembly





CIMAC can offer DDP & FCA local service

in Europe & USA through warehouse service

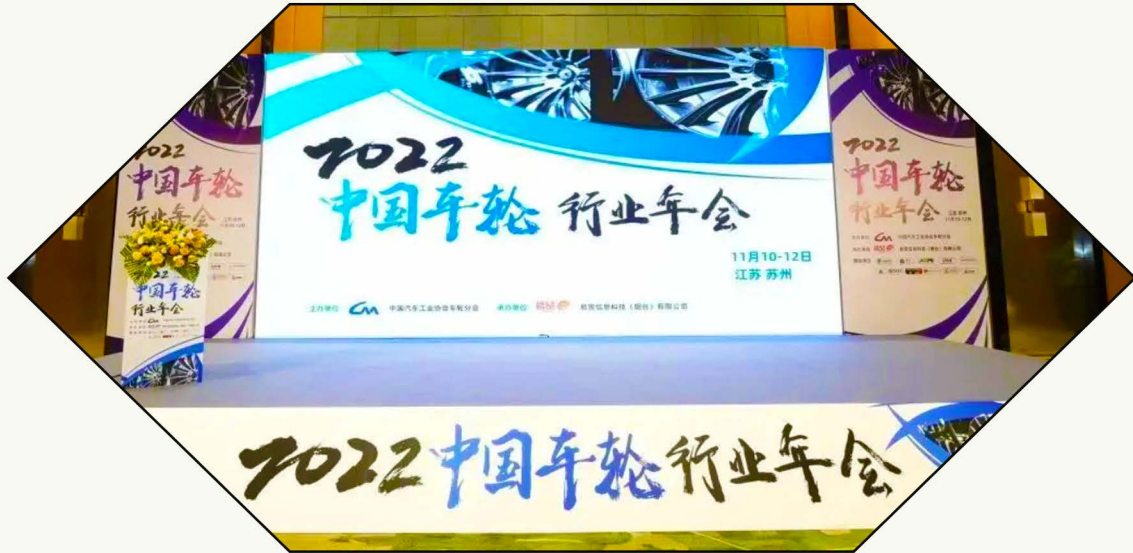




ISO 9001
ISO 14001
ISO 45001
Certificate

Patented product and 27 patents for rim profile





Annual meeting of China Association of Automobile Manufacturers in 2022

Director of the China Association of Automobile Manufacturers

Member of the Wheel Technical Committee of the National Technical Committee of Automotive Standardization

Member of the China International Standards Wheel Working Group

Member of the National Tyre and Rim Technical Committee of Standardization

Member of the Auto Industry and Agriculture Tyre and Rim Subcommittees of National Tyre and Rim Technical Committee of Standardization

The graphic features the words "SAFETY FIRST" in a large, bold, orange, sans-serif font. The text is centered and flanked by two sets of black diagonal hazard stripes, one above and one below the text.

Wheel assemblies, rims and other components are safety critical items that must be maintained and used correctly to prevent any risk and dangerous accidents, the maintenance and service must be trained and qualified professionally, following are fatal notice for the safety:

- Always deflate the tire and both tires in dual assembly completely BEFORE any task or maintenance on rims or wheels;
- Always used the correct protective equipment and tools for the maintenance;
- Any task or maintenance on rims of wheels must AFTER appropriate training and qualified from the training.
- The multi pieces wheel include components like lock ring, side rims, the components can explode if the correct procedures are not been followed during mounting and remounting, inflation, assembly and remove.
- Always use cage or other protection device during tire inflation;
- Never to inflate tire to exceeded the recommended pressure. Exceed pressure can cause tire and wheel component to burst with great force, the explode could be cause serious or fatal injure.

Please following all correct and safety procedures in accordance with following authorized standards:

For European Union:

WWW.EUWA.org Safety and Service Recommendations for Wheels

For Americas and other countries:

WWW.osha.gov Servicing Multi-Piece and Single Piece Rim Wheels

WWW.osha.gov/Publications/OSHA3086/osha3086.html

WWW.msha.gov Tire and Rim Safety Awareness Program

CONSTRUCTION WHEELS



CIMAC assures that all construction wheels are designed, manufactured, painted and tested to the highest standards in order to maximize the wheel performance, durability and value.

Wheel Dia. (in)	Wheel Size	Piece	Recommend Tire
15	15-5.0	2	7.00-15
	15-5.5	2	7.00-15
	15-6.00G	2	8.25-15
	15-6.5	2	7.50-15
	15x6	1	205/60R15
	15x7	1	9.5/65-15
	7.00T-15	2	9.00R15,250-15
	7.50V-15	2	250-15
	8.00V-15	2	300-15
	15-9.75	2	355/65-15
16	16-6.00G	2	7.5-16
	16x6LB	1	7.5-16
	16x8LB	1	10-16,10.5/80-16
	16x10LB	1	12.5/70-16
16.5	16.5x8.25	1	10-16.5,31/10.50-16.5
	16.5x9.75	1	12-16.5,31/11.50-16.5,36/12.50-16.5
	16.5x12.00	1	33/15.50-16.5
17.5	17.5x10.5	1	14-17.5
18	18x9	1	10.5/80-18
	18x11	1	12.5/80-18
	18x13	1	15.5/60-18,15.5/70-18
19.5	19.5x6.75	1	245/70R19.5,265/70R19.5
	19.5x7.50	1	245/70R19.5,255/60R19.5,265/70R19.5,285/70R19.5
	19.5x8.25	1	255/60R19.5,265/55R19.5,265/70R19.5,285/70R19.5,305/70R19.5
	19.5x11.75	1	365/40R19.5,385/55R19.5,385/65R19.5
	19.5x13.00	1	445/65R19.5
	19.5x14.00	1	425/55R19.5,435/50R19.5,445/45R19.5



20	20-6.5	2	7.50-20
	20-7.00T	2	8.25R20,9.00R20,10.00R20,270/95R20,290/95R20
	20-7.50V	2	9.00R20,10.00R20,11.00R20,270/95R20,290/95R20,300/95R20
	20-7.5/1.7	3	10.00-20
	8.00V-20	2	11.00R20,12.00R20,290/95R20,300/95R20,330/95R20
	20-8.5	2	11.00R20,12.00R20,300/95R20,330/95R20,335/80R20
	20-9.0	2	12.00-20
	20-10.0/1.7	3	14.00-20
	20-10.5/1.7	3	14.00-20
	20-11.00TG	3	14/70-20
	20-11.25/2.0	3	16.00-20
	20x11	1	340/80R20,375/75R20,335/80R20,365/80R20
	20x13	1	420/65R20,420/75R20,405/70R20
	20x14	1	16/70-20,440/65R20
	20x16	1	500/55-20
21	21-17.00/1.5	3	24.00-21
	21-18.00/1.5	3	24.00-21
22.5	22.5x7.50	1	11R22.5,275/80R22.5
	22.5x8.25	1	275/80R22.5,295/80R22.5,315/70R22.5
	22.5x9.00	1	12R22.5,13R22.5,295/80R22.5
	22.5x11.75	1	15R22.5,365/70R22.5
	22.5x13.00	1	16.5R22.5,425/65R22.5
	22.5x14.00	1	18R22.5,465/65R22.5
22.5x16.00	1	550/60-22.5,500/45-22.5	
23	23-18.00	3	30/21.5R23
24	24-8.0	3	14.00R24,14.00-24
	24-8.5	3	11.00-24,12.00R24
	24x9	1	14.00R24
	24-10.00	3	14.00-24
	24-11.75	3	16.00-24
	24x10	1	12.00-24
	24x13	1	14.9-24
	24xDW14L	1	16.9-24
	24xDW15L	1	16.9-24,18.4-24
24xDW16L	1	18.4-24,19.50-24	
25	25x10.00	1	13.0-25
	25x12.00	1	15.5-25
	25x13.00	1	17.5-25
	25x14.00	1	17.5-25
	25-10.00/1.5	3	14.00-25
	25-11.25/2.0	3	16.00-25
	25-11.25/2.0	5	16.00-25
	25-12.00/1.5	3	15.50-25
25-13.00/2.5	3	18.00-25,18.00R25	



25	25-13.00/2.5	5	18.00-25,18.00R25
	25-14.00/1.5	3	17.50-25,17.5R25
	25-15.00/3.0	5	21.00-25
	25-17.00/1.7	3	20.5-25,20.5R25
	25-17.00/2.0	5	20.5-25,20.5R25
	25-19.50/2.5	3	23.5-25,650/65R25
	25-19.50/2.5	5	23.5-25,650/65R25
	25-22.00/3.0	3	26.5-25,26.5R25
	25-22.00/3.0	5	26.5-25,26.5R25
	25-24.00/3.0	5	30.0-25,750/65R25
	25-25.00/3.5	3	29.5-25,29.5R25
	25-25.00/3.5	5	29.5-25,29.5R25
	25-30.00/1.5	3	67x34.00-25
	25-36.00/1.5	3	66x44.00-25
	26	26xDW16A	1
26xDW20B		1	23.1-26,23.1R26,24L-26
26xDW25B		1	28L-26,30.50L-26
28	28x10.00GR	1	13.00-28
29	29-24.00/3.5	5	29.5-29
	29-25.00/3.5	5	29.5-29
	29-27.00/3.5	5	32.0-29
	29-28.00/3.5	5	875/65R29
30	30xDW16L	1	18.4-30
32	32xDW21B	1	650/75R32
	32xDW27B	1	800/65R32
33	33-13.00/2.5	5	18.00-33
	33-28.00/3.5	5	35/65-33,35/65R33
35	35-15.00/3.0	5	21.00R35
	35-17.00/3.5	5	24.00R35
	35-25.00/3.5	5	33.25-35
49	49-17.00/3.5	5	24.00-49
	49-19.50/4.0	5	27.00-49
51	51-22.00/4.5	5	30.00-51
	51-26.00/5.0	5	36.00-51
57	57-29.00/6.0	5	40.00-57
63	63-36.00/5.0	5	53.00-63
	63-44.00/5.0	5	58.00-63

CIMAC' s single-piece and multi-piece series' wheels for construction industries fully utilize high strength low alloy (HSLA) steel. Heat treated material is used for critical components of multi-piece wheels. Auto butt-welding is widely used on rim, ring and other circular parts; All circumferential weld seams are inspected by non-destructive inspection to ensure zero defect.

INDUSTRIAL WHEELS



CIMAC' s industrial wheels are used for forklifts, harbor equipment, ground support equipment, various handler, stacker and crane.

Wheel Dia. (in)	Wheel Size	Piece	Recommend Tire
8	8-3.00D	Split	15x4 1/2-8,5.00-8NHS
	8-3.00D	3	15x4 1/2-8,5.00-8NHS
	8-3.00D	4	15x4 1/2-8,5.00-8NHS
	8-4.33R	Split	18x7-8NHS
	8-4.33R	3	18x7-8NHS
9	9-3.50D	Split	6.00-9NHS
	9-4.00E	Split	6.00-9NHS
	9-4.00E	3	6.00-9NHS
	9-4.00E	4	6.00-9NHS
	9-6.00E	3	21x8-9NHS
	9-6.00E	4	21x8-9NHS
10	10-5.00F	Split	6.50-10NHS
	10-5.00F	2	6.50-10NHS
	10-5.00F	4	6.50-10NHS
	10-6.50F	Split	23x9-10NHS
	10-6.50F	2	23x9-10NHS
	10-6.50F	4	23x9-10NHS
12	12-5.00S	Split	7.00-12NHS
	12-5.00S	2	7.00-12NHS
	12-5.00S	4	7.00-12NHS
	12-8.00G	2	23x10-12NHS
	12-8.00G	4	23x10-12NHS
14.5	14.5x7.00MH	1	9-14.5MH,9-14.5LT
15	15-5.5	2	7.00-15NHS
	15-5.5	4	7.00-15NHS
	15-6.00G	2	7.50-15NHS
	15-6.5	2	8.25-15NHS
	15-6.5	4	8.25-15NHS
	15-7.00T	2	9.00-15NHS
	15-7.0	4	28x9-15NHS
	15-7.50V	2	250-15NHS
	15-7.5	4	250-15NHS
	15-8.00V	2	300-15NHS
	15-8.0	4	300-15NHS
	15-9.75	2	350/65-15
	15-9.75	4	350/65-15
16	16-5.50F	2	6.50-16,7.00-16
	16-6.00G	2	7.5R16
	16-6.5	2	8.25-16
	16-7.00T	2	9.00-16



16.5	16.5x9.75	1	26x12-16.5
17.5	17.5x6.75	1	240/55D17.5
18	18x11	1	365/70R18
	18x13	1	405/70R18
20	20-6.5	2	8.25-20
	20-7.0/1.7	3	9.00-20
	20-7.00T	2	9.00-20
	20-7.5/1.7	3	10.00-20
	20-7.50V	2	10.00-20
	20-8.0/1.7	3	11.00-20
	20-8.00V	2	11.00-20
	20-8.5/1.7	3	12.00-20
	20-8.5	2	12.00-20
	20-10.00/1.7	3	14.00-20
	20x11	1	365/80R20,315/55D20
	20x13	1	405/70R20
24	24-8.5/1.7	3	12.00-24
	24-8.5	2	12.00-24
	24x9	1	10.00-R24
	24-10.00/2.0	3	14.00-24
	24-10.00VA	3	14.00-24
	24-10.0	2	14.00-24
	24x10	1	33x12D610
	24x11	1	36x14D610
	24x12	1	36x15D610,385/65D24,385/65-24
	24x13	1	14.9-24,440/65R24
22.5	22.5x8.25	1	280/75R22.5
	22.5x9.00	1	310/80R22.5
24.5	24.5x11.75	1	13R24.5,355/55-24.5,355/55D625
	24.5x13.00	1	15R24.5,385/50D625,15-625
	24.5x15.00	1	18R24.5,445/45D625,18-625
25	25-10.00/2.0	3	385/95R25
	25-11.25/2.0	3	445/95R25
	25-11.25/2.0	5	16.00-25
	25-13.00/2.5	5	18.00-25
	25-15.00/3.5	5	21.00-25
	25-17.00/2.0	3	525/80R25
28	28xW13	1	14.9-28,385/45-28,440/65R28
	28xW15L	1	16.9-28,445/50D710
33	33-13.00/2.5	5	18.00-33
35	35-15.00/3.0	5	21.00-35





		Diameter Range:4"-30"			
		Type	Size	Diameter	Width
Mold on Wheels	Welding	Inch	8x3	8	3
		Inch	22x20	22	20
		Inch	30x20	30	20
		Metric	266.7x127	266.7	127
		Metric	305x220	305	220
		Metric	591.5x305	591.5	305
		Call for Sizes&Availability			
	Casting	Type	Size	Diameter	Width
		Inch	16x10	16	10
		Inch	22x16	22	16
		Inch	30x16	30	16
		Metric	266.5x129.5	266.5	129.5
		Metric	457.2x124.3	457.2	124.3
		Metric	711.2x217.5	711.2	217.5
Idle wheels	Call for Sizes&Availability				
	Type	Size	Diameter	Width	
	Inch	32x13.5	32	13.5	
	Inch	32x15.75	32	15.75	
	Inch	36.834x13.5	36.834	13.5	
	Metric	950x223.5	950	223.5	
	Metric	950x287	950	287	
	Metric	1100x287	1100	287	
Base Bands	Steel	Diameter:4"-30"			
		Type	Size	Diameter	Width
		Inch	8x3 1/2	8	3.5
		Inch	12 1/8x7	12.125	7
		Inch	30x20	30	20
		Metric	75x50	75	50
		Metric	305x220	305	220
Metric	670x240	670	240		



Service for Airport equipment of Industrial

Wheel Dia. (in)	Wheel Size	Piece	Recommend Tire
8	8-3.00D	4	15x4 1/2-8,5.00-8NHS
	8-4.33R	3	18x7-8NHS
9	9-4.00E	4	6.00-9NHS
	9-6.00E	4	21x8-9NHS
10	10-5.00F	4	6.50-10NHS
	10-6.50F	4	23x9-10NHS
12	12-5.00S	4	7.00-12NHS
	12-8.00G	4	23x10-12NHS
15	15-5.5	4	7.00-15NHS
	15-6.5	4	8.25-15NHS
	15-7.0	4	28x9-15NHS
	15-7.5	4	250-15NHS
	15-8.0	4	300-15NHS
	15-9.75	4	350/65-15
20	20-10.00/2.0	3	14.00R20
21	21-18.00/1.5	3	24.00-21
30	30x16	1	40x16x30



The multi piece wheels, split rims, mold-ons, press-ons and single-piece wheels for above mentioned industrial vehicles are designed and produced according to TRA, ETRTO & JATMA standards. Hot-formed steel is widely utilized on critical parts and we use innovative forming process to ensure highest performance and durability and to realize cost-efficiency for our customers.

MINING WHEELS



CIMAC designs and produces heavy-duty multi-piece wheels for both surface and underground mining vehicles such as quarry haul trucks, mining trucks, heavy wheel loaders, heavy wheel dozers, mining dump-trucks and other special purpose wheeled vehicles of the mining industry.

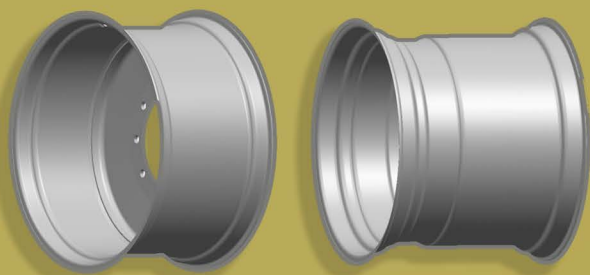
Wheel Dia. (in)	Wheel Size	Piece	Recommend Tire
15	15-11	3	14.00-15
16.5	16.5x8.25	1	10-16.5
	16.5x9.75	1	12-16.5
20	20-7.5	3	10.00-20
	20-8.0	3	11.00-20
	20-8.5	3	12.00-20
	20-10.00	3	14.00R20
22.5	22.5x9.00	1	12R22.5
24	24-8.5	3	12.00-24
	24-10.00	3	14.00-24,14.00R24
25	25-10.00/1.5	3	13.00R25
	25-10.00/2.0	3	14.00-25,14.00R25
	25-11.25/2.0	5	16.00-25,16.00R25
	25-13.00/2.5	5	18.00-25,18.00R25
	25-14.00/1.5	5	17.5-25
	25-19.50/2.5	5	23.5-25,23.5R25
	25-22.00/3.0	5	26.5-25,26.5R25
	25-25.00/3.5	5	29.5-25,29.5R25
29	29-17.00/3.5	5	24.0-29
	29-22.00/3.0	5	26.5-29
	29-24.00/3.0	5	29.5-29
	29-25.00/3.5	5	29.5-29
	29-27.00/3.5	5	32.0-29
33	33-13.00/2.5	5	18.00-33,18.00R33
	33-15.00/3.0	5	21.00-33,21.00R33
	33-17.00/3.5	5	24.00-33
	33-22.00/4.0	5	27.00-33
	33-28.00/3.5	5	35/65-33
35	35-15.00/3.0	5	21.00-35,21.00R35
	35-17.00/3.5	5	24.00-35,24.00R35
	35-27.00/3.5	5	33.25-35
	35-31.00/4.0	5	37.25-35



39	39-28.00/4.0	5	33.50-39
	39-32.00/4.0	5	40.00-39
	39-32.00/4.5	5	41.25-39
45	45-36.00/4.5	5	45.00-45
49	49-17.00/3.5	5	24.00-49
	49-19.50/4.0	5	27.00-49,27.00R49
51	51-22.00/4.5	5	30.00-51
	51-24.00/5.0	5	33.00-51
	51-26.00/5.0	5	36.00-51
57	57-27.00/6.0	5	37.00-57
	57-29.00/6.0	5	40.00-57
63	63-36.00/5.0	5	53.00-63
	63-41.00/5.0	5	55.00-63
	63-44.00/5.0	5	58.00-63

To offer best performance during rough working situation, forged material is used for the most critical components, and most parts are fully machined. We use Lincoln welding equipment and non-destructive inspection to prevent weld defects.

AGRICULTURE WHEELS



CIMAC produces agricultural wheels in the W,DW,DC and FB series for Adjustable disc wheels, fixed disc wheels, high speed tractor wheels, row crop wheels and flotation wheels. The wheels are used for tractor, combine harvester, spraying and irrigation machinery, agricultural implements, flotation vehicles, Sugar Ethanol/Sugar cane trailers, slurry tankers and balers. All agriculture wheels are finished with e-coat and powder paint to ensure paint durability under moist/corrosive environment.

Wheel Dia. (in)	Wheel Size	Piece	Recommend Tire
8	8x3.75	1	5.00-8
	8x7	1	18/9.50-8
10	10x6.00I	1	20x8.00-10
	10x8.5	1	18x10.50-10
12	12x3.00D	1	4.00-12
	12x4	1	6.00-12
	12x4.50E	1	6.00-12
	12x7.00	1	22x8.50-12,23x8.50-12
	12x8.00	1	26x10.00-12
	12x8.50	1	23x10.50-12
14	12x10.50I	1	23x12.50-12,26x12.00-12
	14x4 1/2J	1	6.00-14
15	15x4.00E	1	5.00-15
	15x6	1	7.50-15
	15x7	1	8.50-15
	15x8LB	1	11L-15
	15x10LB	1	12.5L-15
	15x13LB	1	31x15.50-15,33x15.50-15,295/50R15
15.3	15.3x9.00	1	10.0/75-15.3IMPL,11.5/80-15.3IMPL,11.5/80-15.3EM,12.5/80-15.3IMPL
15.5	15.5xAG13.00	1	400/60-15.5



16	16x3.00D	1	4.00-16
	16x4.00E	1	5.50-16
	16x4.50E	1	6.00-16,6.50-16
	16x5.00F	1	7.50-16
	16x5.50F	1	7.00-16,7.50-16
	16x6.00F	1	9.00-16
	16xW8	1	9.5-16
	16x8LB	1	9.5-16
	16x10LB	1	12-16
	16x11	1	13.0/55-16,13.0/75-16,14.0/65-16
16.1	16.1xW11C	1	13.6-16.1
	16.1xW14C	1	16.9-16.1
	16.1xW16C	1	18.4-16.1
	16.1xW18C	1	20.8-16.1
16.5	16.5x8.25	1	10-16.5
	16.5x9.75	1	12-16.5
	16.5x12.00	1	15.5-16.5
17	17x13.00	1	15.0/55-17
	17x16.00	1	19.0/45-17
17.5	17.5x6.75	1	8.5R17.5
18	18x9	1	10.5-18
	18x11	1	13-18
	18x13	1	15-18
	18-13	1	16.5/70-18
19.5	19.5x6.75	1	245/70R19.5
	19.5x7.50	1	265/70R19.5
	19.5x8.25	1	285/70R19.5
	19.5x14.00	1	445/45R19.5
20	20x5.50F	1	6.50-20,7.50-20
	20xW7	1	8.30-20,280/70R20
	20xW8	1	9.50-20,280/70R20
	20x11	1	12.4-20,12.4R20,14.5R20,335/80R20,365/80R20,375/75R20
	20xW13	1	16/70-20,405/70-20,425/70R20
	20x13.00	1	15.5-20
	20x14L	1	14.9-20,16/70-20
22.5	22.5x7.50	1	255/70R22.5 265/60R22.5
	22.5x8.25	1	265/70R22.5 275 or 285/60R22.5
	22.5x9.00	1	285/70R22.5 295 or 315/60R22.5
	22.5x11.75	1	355 or 375 or 385/80R22.5
	22.5x12.25	1	405/70R22.5
	22.5x13.00	1	425/65R22.5
	22.5x14.00	1	425 or 435 or 445 or 455/65R22.5
	22.5xAG16.00	1	500/45-22.5,500/60-22.5,550/45-22.5,550/60R22.5
	22.5xAG20.00	1	600/50-22.5,650/50R22.5
	22.5xAG24.00	1	700/40-22.5,750/45R22.5



24	24xW7	1	8.30-24
	24xW8	1	9.50-24,250/85R24
	24xW10	1	11.2-24,11.2R24,320/70R24
	24xW12	1	13.6-24,13.6R24,380/70R24,380/85R24
	24xW13	1	14.9-24,14.9R24,420/70R24,420/65R24
	24xDW14L	1	16.9R24,480/70R24,440/65R24
	24xW15L	1	16.9-24,16.9R24,480/65R24,480/70R24
	24xDW18L	1	540/65R24
25	25-36.00/1.5	3	66x44.00-25
26	26xDW16A	1	18.4-26,18.4R26,480/80R26,480/80-26,580/70R26
	26xDW20B	1	23.1-26,620/70R26,620/75R26
	26xDW24B	1	28.1R26
	26xDW25B	1	28L-26,710/65R26,750/65R26
26.5	26.5xAG20.00	1	600/55-26.5,650/55R26.5
	26.5xAG24.00	1	700/50-26.5,750/45R26.5
	26.5xAG28.00	1	800/45-26.5
28	28xW10	1	11.2-28
	28xW11	1	12.4-28
	28xW12	1	13.6-28
	28xW13	1	14.9-28
	28xW14L	1	15.5-28
	28xW15L	1	16.9-28
30	30xW12	1	13.6-30
	30xW14	1	15.5-30
	30xW15L	1	16.9-30
	30xW16L	1	18.4-30
30.5	30.5xAG20.00	1	600/60-30.5,650/65-30.5
	30.5xAG24.00	1	700/50-30.5,750/60-30.5
	30.5xAG28.00	1	800/45-30.5,850/50-30.5
32	32xW8	1	9.5-32,9.5R32,11.2R32,270/80R32,270/95R32
	32xW10	1	12.4R32,320/85R32
	32xDW21B	1	24.5-32,650/75R32,680/85R32
	32xDW27B	1	30.5L-32,IF800/65R32,800/65R32,800/70R32,900/60R32
	32xDW30B	1	900/60R32,900/75R32
	32xDH31	1	VF900/65R32,DH35.5L-32
	32xDW36B	1	1050/50R32
	32-36.00VA	3	IF 1050/50R32 CFO
	32xDW44B	1	IF 1250/50R32
	32-44.00VA	3	IF 1250/50R32 CFO
34	34xDW15L	1	420/85R34,480/70R34
	34xDW16L	1	18.4R34,520/70R34,540/65R34
	34xDW18L	1	600/65R34
	34xDW20B	1	600/65R34,600/70R34
36	36xW8	1	9.5R36,230/95R36,270/80R36,270/95R36,11.2R36



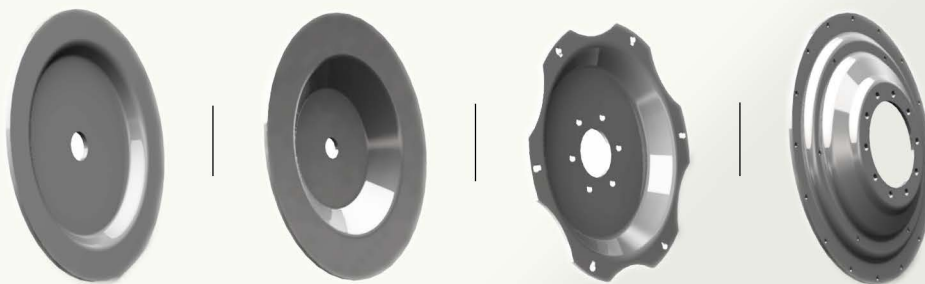
38	38xW8	1	11.2-38,11.2R38,270/95R38
	38xW10	1	12.4-38,12.4R38,320/85R38
	38xW12	1	13.6R38,380/80R38
	38xDW12L	1	13.6R38,380/80R38
	38xDW14L	1	16.9-38,420/85R38,480/70R38
	38xDW15L	1	16.9-38,420/85R38,480/70R38
	38xDW16L	1	18.4-38,18.4R38,520/70R38,540/65R38,520/85R38
	38xDW18L	1	20.8-38,20.8R38,580/70R38,600/65R38
	38xDW20B	1	600/65R38,650/65R38,620/70R38,650/65R38
	38xDW23B	1	650/75R38,650/85R38,710/70R38
	38xDW25B	1	710/60R38
	38xDW27B	1	800/70R38
	42	42xW8	1
42xW16L		1	18.4R42,480/80R42
42xDW16L		1	18.4R42,480/80R42
42xW18L		1	20.8-42,520/85R42,650/65R42
42xDDW18L		1	VF 520/85R42 CFO
42xDW20B		1	520/85R42
42xDW23B		1	710/75R42
42xDW25B		1	710/70R42,710/75R42
44	44xW8	1	IF 900/50R42 CFO,IF 900/60R42 CFO
46	44xW8	1	9.5R44,230/95R44
	46xW8	1	230/95R46
	46xW10	1	11.2R46,270/95R46
	46xW12	1	13.6R46,340/85R46,380/105R46
	46xW16L	1	480/80R46
48	46xDW16L	1	480/80R46
	48xW8	1	270/95R48
	48xW10	1	11.2-48,11.2R48
54	54xW8	1	230/115R54
	54xW10	1	11.2R54,12.4R54,270/95R54,320/90R54
	54xW12	1	380/90R54



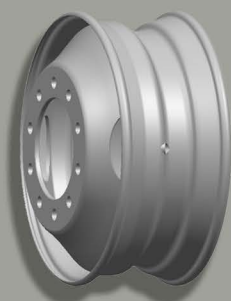
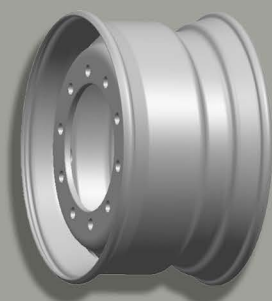
Service for Adjustable Discs

Adjustable Discs

Dimension	Flat Area	Thickness
W24"	325	8
W24"	390	10
W28"	390	12
W32"	400	12
W44"	400	12
W46"	400	12
W48"	400	12
W50"	400	12-16
W52"	400	12-16
W54"	400	12-16
DW30"	415	12
DW36"	390	12
DW42"	390	12-14



COMMERCIAL WHEELS



CIMAC drum break and disc break series' commercial wheels offer mechanical durability and cost-effecticiency to our customers. High strength low alloy (HSLA) steel, CNC flow-forming machine and Zinc phosphatized e-coat are used on all Commercial wheels to ensure truck and trailer wheel strength, precise parameters and light weight. All commercial wheels are tested according to the standards of EUWA and SAE.

Wheel Dia. (in)	Wheel Size	Piece	Recommend Tire
17.5	17.5x6.00	1	8R17.5,8.5R17.5,9.5R17.5,205/65R17.5,205/75R17.5,215/75R17.5,225/70R17.5
	17.5x6.75	1	8R17.5,8.5R17.5,9.5R17.5,10R17.5,205/65R17.5,205/75R17.5,215/75R17.5,225/70R17.5,225/75R17.5,235/75R17.5,245/70R17.5,265/70R17.5
19.5	19.5x6.75	1	245/70R19.5,265/70R19.5
	19.5x7.50	1	245/70R19.5,255/60R19.5,265/70R19.5,285/70R19.5
	19.5x8.25	1	255/60R19.5,265/55R19.5,265/70R19.5,285/70R19.5,305/70R19.5
	19.5x11.75	1	365/40R19.5,385/55R19.5,385/65R19.5
	19.5x13.00	1	445/65R19.5
	19.5x14.00	1	425/55R19.5,435/50R19.5,445/45R19.5
20	20-7.00T	2	8.25R20,9.00R20,10.00R20,270/95R20,290/95R20
	20-7.5FL	2	9.00R20,10.00R20,11.00R20,270/95R20,290R95R20,300/95R20
	20-7.50V	2	9.00R20,10.00R20,11.00R20,270/95R20,290R95R20,300/95R20
	20-8.00V	2	11.00R20,12.00R20,290/95R20,300/95R20,330/95R20
	20-8.5	2	11.00R20,12.00R20,300/95R20,330/95R20,335/80R20
	20-9.00	2	13.00R20
20.5	20.5x16.00	1	252/65R20.5 XS
	20.5x18.00	1	24R20.5 XS TL
22.5	22.5x6.75	1	9R22.5,10R22.5,255/70R22.5
	22.5x7.50	1	10R22.5,11R22.5,255/70R22.5,265/60R22.5,275/70R22.5,275/80R22.5
	22.5x8.25	1	11R22.5,12R22.5,255/70R22.5,265/60R22.5,275/70R22.5,275/80R22.5,285/60R22.5,295/80R22.5,305/70R22.5
	22.5x9.00	1	12R22.5,13R22.5,285/60R22.5,295/55R22.5,295/60R22.5,295/75R22.5,295/80R22.5,305/60R22.5,305/70R22.5,315/60R22.5,315/70R22.5,315/75R22.5,315/80R22.5
	22.5x11.75	1	355/50R22.5,365/70R22.5,375/50R22.5,375/90R22.5,385/55R22.5,385/65R22.5
	22.5x12.25	1	385/65R22.5,405/70R22.5
	22.5x13.00	1	415/45R22.5,425/65R22.5,445/65R22.5,445/75R22.5
	22.5x14.00	1	415/45R22.5,425/65R22.5,435/50R22.5,445/65R22.5,455/55R22.5
24	24-8.5	2	12.00R24
24.5	24.5x8.25	1	11R24.5



**CHANNEL
SPACER
BANDS**

15×14
20×3 3/8
20×3 5/8
20×4
20×4 1/4
20×4 1/2
22×3 3/8
22×3 5/8
22×4
22×4 1/4
22×4 1/2
15×4
20×4
20×4 1/4
20×4 1/2
22×4
22×4 1/4
22×4 1/2



**CORRUGATED
SPACER
BANDS**

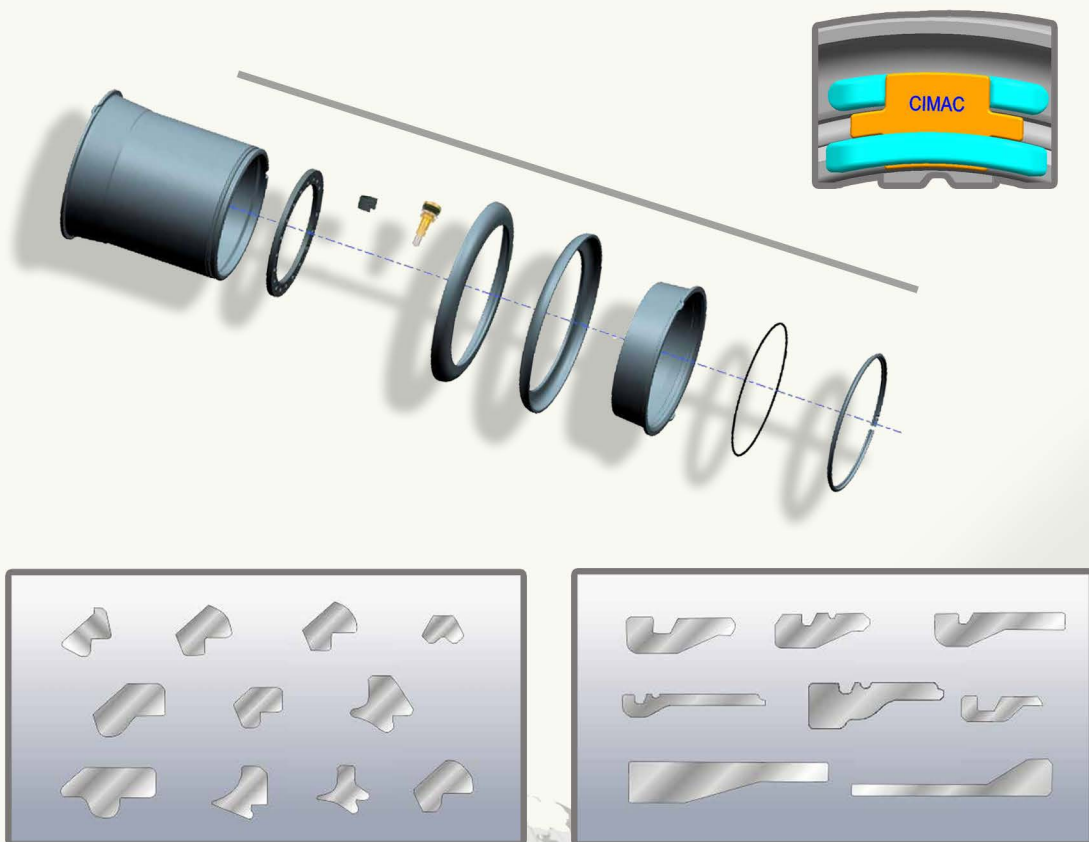
15×4
15×4 1/4
15×4 1/2
20×4
20×4 1/4
20×4 1/2
22×4
22×4 1/4
22×4 1/2

C

Service and Solution

CIMAC is experienced in wheel & tire assembly, tire foamfill, tire water filling, installation of valves, global logistics and oversea supply chain management.


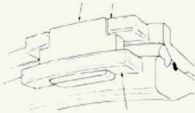
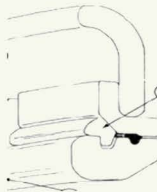
Depending on the various requirements from the market, our skillful team will provide our customers with reliable solution.



SPECIAL WARNING FOR WHEELS

COPY RIGHT BY CIMAC WHEEL

1. Strict fit compatible TIRE size for RIM(Standard: ETRTO, TRA);
2. Never exceed the tire and rim MAX LOAD capacity;
3. Perform visual check before equipment operation EVERY DAY;

Check List	Check Contents	Correct Condition
A	Tire pressure 	In right range
B	Safety Driver 	<ul style="list-style-type: none"> ● Not Loose ● Not Crack on Welding Seam
C	Lock Ring 	<ul style="list-style-type: none"> ● Not Loose ● In Right Position
D	Over All View	<ul style="list-style-type: none"> ● Without Obvious Distortion; ● Without Obvious Out-Of-Round ● Without Serious Material Crash

Warning: STOP use the wheel if any points INCONFORMITY above "Correct Condition"

4. Every 1500 work hours and every time maintenance or replace tire, or after the equipment long period shutdown; need perform the wheel INSPECTION according the page of " Safety First" ;
5. Mount and Demount the wheels, please read the page of " Safety First" ;
6. Warranty for Heavy Duty Port Equipment Wheels: 1500 work hours.

General Delivery Terms

Unless otherwise agreed in writing, all deliveries shall be executed on the following terms:

- 1. Both printed and electronic drawings, technical documents, quotation and other commercial documents are properties of CIMAC, they should not be disclosed to any third parties without CIMAC' s consent;**
- 2. Orders cannot be cancelled after buyer' s confirmation. In case of any confirmed order cancelation, buyer will be charged all direct costs associated by the cancelation;**
- 3. Buyer shall examine the delivered goods upon receipt and give written notification of all obvious defects or incomplete delivery within 7 work days after receiving the goods;**
- 4. CIMAC' s quotation include standard packaging and standard stamp on wheel, and any special requirement on package, stamp or logo will incur additional charges;**
- 5. Unless otherwise noticed, CIMAC' s quotation validity is 60 days after date of issue;**
- 6. CIMAC' s technical parameter, drawings and other technical documents are subject to update without notice.**

Warranty

CIMAC Wheels warrants the on road and off road wheel products to be free from defects of manufacturing and materials for the period of 2(two) years or 2000 (two thousand) working hours from the date of manufacture, whichever comes first. This warranty excludes finish.

The warranty will be invalid for the following reasons:

Wheel has been used in the manner that contrary with the standards and specified data of TRA, ETRTO, JATMA and ITTAC.

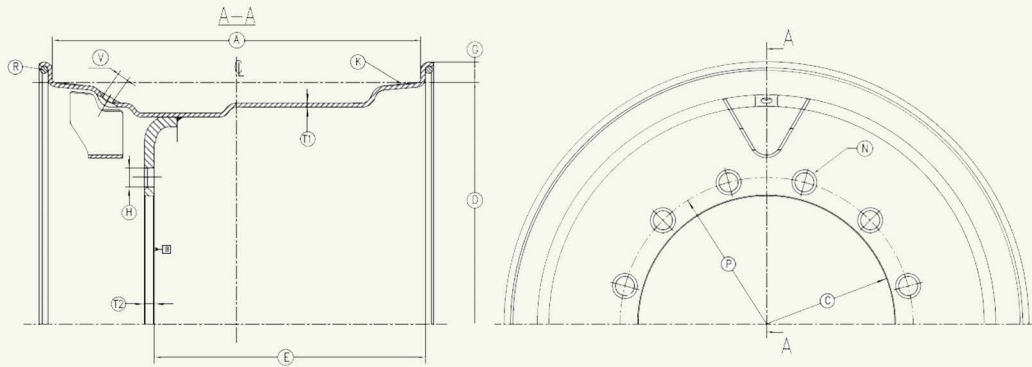
- 1.Wheel has been reformed or reproduced;**
- 2. Wheel has been used with improper tire sizes, inflation pressures, or excess load capacity;**
- 3.Wheel has been damaged as a result of improper tightening procedures, torqued in excess or deficient of recommended by axle manufacturer;**
- 4.Wheel has been used in a manner contrary to the instructions, specifications, and procedures contained in the wheel usage manual and International Wheel and Rim Association;**
- 5.Wheel has been used in the manner contrary to EUWA: Safety and Service Recommendations for Wheels (www.euwa.org); and OSHA Regulation Section 1910:177 and OSHA 3086; Servicing Multi-piece and Single Piece Rim Wheels(www.osha.gov);**

The warranty does NOT apply to locking ring and other wear components of multi piece wheels.CIMAC Wheel' s obligation under this warranty is limited to repair or replacement the wheel.

Certificate of Liability Insurance

CERTIFICATE OF LIABILITY INSURANCE				Issue Date (MM/DD/YY): 08/01/2023		
				Certificate No. 02		
THIS CERTIFICATE IS ISSUED AS A MATTER OF INFORMATION ONLY AND CONFERS NO RIGHTS UPON THE CERTIFICATE HOLDER. THIS CERTIFICATE DOES NOT AMEND, EXTEND OR ALTER THE COVERAGE AFFORDED BY THE POLICIES BELOW.						
INSURED:			COMPANIES AFFORDING COVERAGE			
1. Jining CIMAC Wheel Co., Ltd Address: No.1619, Bldg B, Cuidu International Edifice, Rencheng Avenue, Jining, Shandong, China			Name of insurer Starr Property & Casualty Insurance (China) Company Limited AM Best: A			
2. CIMAC Wheel Industries Co., Limited Address: Unit 9 9/f Asia Trade Centre 79 Lei Muk Road Kwai Chung Nt Hong Kong						
COVERAGES						
THIS IS TO CERTIFY THAT THE POLICIES OF INSURANCE LISTED BELOW HAVE BEEN ISSUED TO THE INSURED NAMED ABOVE FOR THE POLICY PERIOD INDICATED, NOTWITHSTANDING ANY REQUIREMENT, TERM OR CONDITION OF ANY CONTRACT OR OTHER DOCUMENT WITH RESPECT TO WHICH THIS CERTIFICATE MAY BE ISSUED OR MAY PERTAIN, THE INSURANCE AFFORDED BY THE POLICIES DESCRIBED HEREIN IS SUBJECT TO ALL THE TERMS, EXCLUSIONS AND CONDITIONS OF SUCH POLICIES. LIMITS SHOWN MAY HAVE BEEN REDUCED BY PAID CLAIMS.						
CO LTR	TYPE OF INSURANCE	POLICY NUMBER	POLICY EFFECTIVE DATE (MM/DD/YY)	POLICY EXPIRATION DATE (MM/DD/YY)	LIMITS	
A	GENERAL LIABILITY	AA000020ZAD20 18B000092	08/01/2023 (AT 00:00 A.M. STANDARD TIME AT THE INSURED'S ADDRESS SHOWN ABOVE)	07/31/2024 (AT 24:00 P.M. STANDARD TIME AT THE INSURED'S ADDRESS SHOWN ABOVE)	GENERAL AGGREGATE N/A	
	<input type="checkbox"/> COMMERCIAL GENERAL LIAB.				PRODUCTS – AGG USD2,000,000	
	<input checked="" type="checkbox"/> PRODUCTS LIABILITY				PERSONAL & ADV INJURY N/A	
	<input type="checkbox"/> OCCUR <input checked="" type="checkbox"/> CLAIM MADE				EACH OCCURRENCE USD2,000,000	
	<input type="checkbox"/> OWNER'S & CONTRACTOR'S PROT				FIRE DAMAGE (Any one fire) N/A	
	<input checked="" type="checkbox"/> BROAD FORM VENDORS COVERAGE				MED E PAY (Any one person) N/A	
<input type="checkbox"/>						
	AUTOMOBILE LIABILITY				COMBINED SINGLE LIMIT \$	
	<input type="checkbox"/> ANY AUTO				BODILY INJURY (Per person) \$	
	<input type="checkbox"/> ALL OWNED AUTOS				BODILY INJURY (Per accident) \$	
	<input type="checkbox"/> SCHEDULED AUTOS				PROPERTY DAMAGE \$	
	<input type="checkbox"/> HIRED AUTOS					
	GARAGE LIABILITY				AUTO ONLY – EA ACCIDENT	
	<input type="checkbox"/> ANY AUTO				OTHER THAN AUTO ONLY:	
	<input type="checkbox"/>				EACH ACCIDENT \$	
	<input type="checkbox"/>				AGGREGATE \$	
	EXCESS LIABILITY				EACH OCCURRENCE \$	
	<input type="checkbox"/> UMBRELLA FORM				AGGREGATE \$	
	<input type="checkbox"/> OTHER THAN UMBRELLA FORM					
	WORKERS COMPENSATION AND EMPLOYERS' LIABILITY				WC STATUTORY LIMITS	
	THE PROPRIETOR/PARTNERS/EXECUTIVE OFFICERS ARE: <input type="checkbox"/> INCL <input type="checkbox"/> EXCL				OTHER	
					EL EACH ACCIDENT \$	
					EL DISEASE – POLICY LIMIT \$	
				EL DISEASE – EA EMPLOYEE \$		
OTHER						
Description of Operations/Locations/Vehicles/Special Items: Certificate holder is included as additional insured per Additional Insured-Vendors where required by written contract This insurance is primary with respect of Products Covered in this policy and subject to the policy terms and conditions Products Covered: Steel Wheel manufactured by declared supplier and distributed via the named insured. Excluding wheels for commercial trucks, ATV vehicles, racing cars and sport cars.						
Jurisdiction/Territory: Worldwide including US/Canada						

Customer request information input table for single-piece wheel

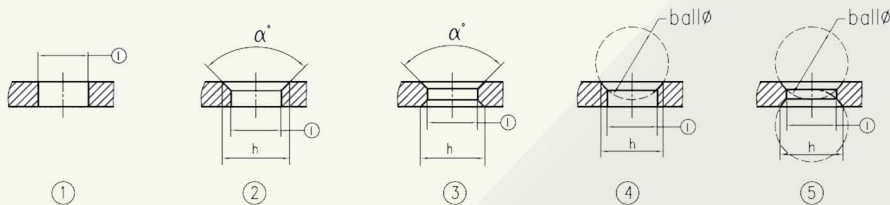


1. Machine Specification 车辆信息:

Machine brand 品牌: _____ Model No.型号: _____ Field 使用场合: _____
 Tire size 轮胎: _____ Ply 层级: _____ Inflation pressure 充气压力: _____ psi
 Load per wheel 单轮载荷: _____, _____, _____
 Color of paint 涂层颜色: _____ Powder 粉末 or Wet paint
 Temperature in using 使用地温度: 室温 0° 以上 or -25° 以上 or 高寒 -40° 以上

2. Dimension of wheel 车轮尺寸:

A: Wide of rim 轮辋宽度: _____
 C: Diameter of center hole 中心孔直径: _____
 D: Diameter or Circumference of beat seat 胎圈座直径或周长: _____
 E: Disc position(or Offset) 轮辐位置: _____ (或偏距 _____)
 T1: Thickness of rim 轮辋厚度: _____
 T2: Thickness of disc 轮辐厚度: _____
 N: Number of bolt hole 螺栓孔数量: _____
 P: P.C.D 螺栓孔分布圆直径: _____
 H: Types of bolt hole 螺栓孔形式: ① or ② or ③ or ④ or ⑤

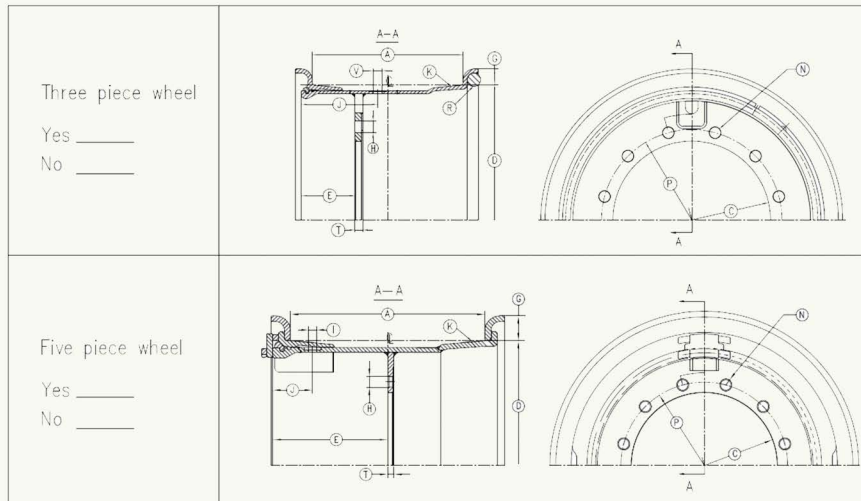


I: _____ h: _____ α : _____ Φ : _____

V. Diameter of valve hole 气门孔直径: _____ Valve guard 气门孔保护套: Yes or No
 K. Knurling 滚花: Yes or No
 R. Reinforcing rib 加强筋: Yes Φ _____ or No

3. Other special requirements 其它特殊要求: _____

Customer request information input table for multi-pieces wheel



1. Machine specification 车辆信息:

Machine brand 品牌: _____ Model No. 型号: _____

Field 使用场合: Port 港 or Mining 矿业 or Other 其它 _____

Tire size 轮胎: _____ Ply 层级: _____ Inflation pressure 充气压力: _____ psi

Load per wheel 单轮载荷: _____, _____, _____

Color of paint 涂层颜色: _____ Powder 粉末 or Wet paint

Temperature in using 使用地温度: 室温 0° 以上 or -25° 以上 or 高寒 -40° 以上

2. Dimension of wheel 车轮尺寸: Three pieces 3 件式 or Five pieces 5 件式

A: Wide of rim 轮辋宽度: _____

C: Diameter of center hole 中心孔直径: _____

D: Diameter or Circumference of beat seat 胎圈座直径或周长: _____

E: Disc position(or Offset) 轮辐位置: _____ (或偏距 _____)

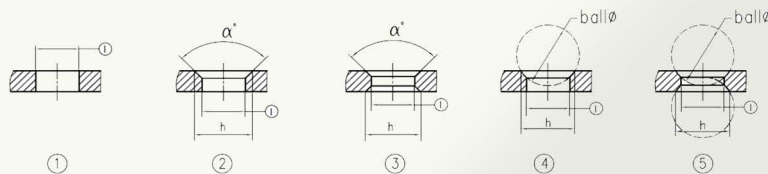
T: Thickness of disc 轮辐厚度: _____

N: Number of bolt hole 螺栓孔数量: _____

P: P.C.D 螺栓孔分布圆直径: _____

G: High of flange 轮缘高度: _____

H: Types of bolt hole 螺栓孔形式: ① or ② or ③ or ④ or ⑤



I: _____ h: _____ α : _____ Φ : _____

V: Diameter of valve hole 气门孔直径: _____

J: Position of valve hole 气门孔位置: _____ Valve guard 气门孔保护套: Yes or No

K: Knurling 滚花: Yes or No

R: Reinforcing rib 加强筋: Yes Φ _____ or No

3. Other special requirements 其它特殊要求: _____

JINING CIMAC WHEEL CO.,LTD.



Please contact

Tel: +86-537-3205135

Fax: +86-537-3205137

E-mail: info@cimacwheel.com