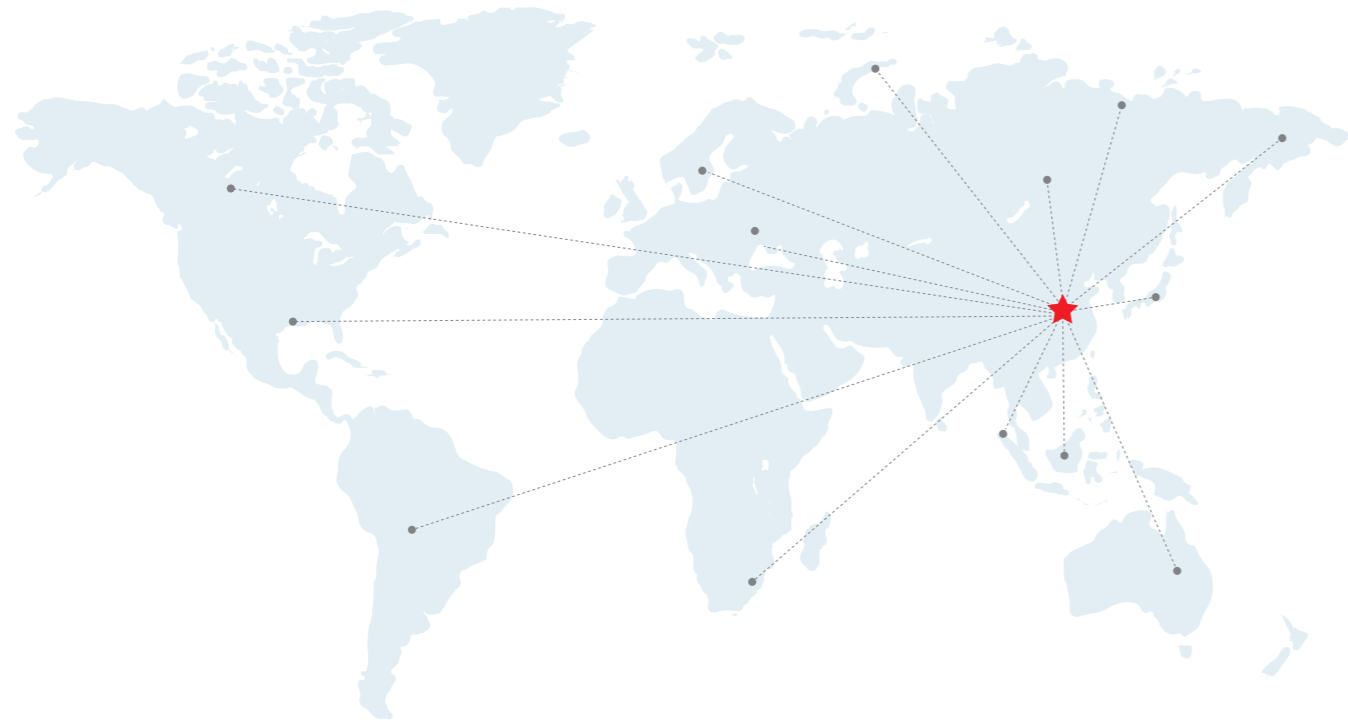


团结·诚信·创新·共赢



Sales Department
Yantai Damai Construction Machinery Co., Ltd
Yantai Donghong Construction Machinery Co.,Ltd

Tel: +86 137-9122-5515

WhatsApp: +86 159-6646-3508

Email: dhgmachinery@donghongjixie.com

<https://www.dhgmachinery.com/>

Address: 2-5 Dongfang Industrial Park, Yantai Economic and Technological Development Area, Yantai, Shandong, China. 264000



国际贸易业务部

烟台市大迈工程机械有限公司

烟台市东弘工程机械有限公司

电话: +86 137-9122-5515

微信: +86 137-9122-5515

公司地址: 山东省烟台市经济技术开发区白云山路东方工业园2期5号门

DONGHONG

DAMAI **DHG**



烟台市大迈工程机械有限公司

YANTAI DAMAI CONSTRUCTION MACHINERY CO., LTD

烟台市东弘工程机械有限公司

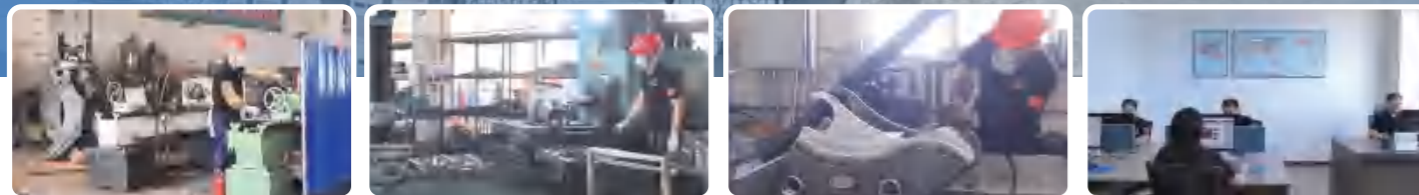
YANTAI DONGHONG CONSTRUCTION MACHINERY CO., LTD

中国·山东·烟台

01

资质证书 / QUALIFICATION CERTIFICATE

COMPANY PROFILE / 公司简介



烟台市东弘机械有限公司是一家专注于挖掘机前端设备,集开发、生产和销售于一体的现代化公司。公司主要产品有挖掘机快速连接器、破碎锤、抓木器、粉碎钳、液压剪、振动夯、松土器、旋挖钻、挖斗等。公司的技术人员都具有在建筑装备相关领域工作10年以上的工作经验,所有产品从加工到交货,质量都受到严格的控制。我们致力于为客户提供最优质的产品和服务。经过不断的创新和改进,公司已先后获得 ISO9001、CE 认证和技术专利。现在我们的产品现已畅销国内外,并与很多国家的客户建立了长期的合作伙伴关系。

经过近10年的稳步快速发展,公司已成为中国工程机械行业的优秀制造企业。公司始终坚持:为社会创造财富;为员工创造机遇;为客户创造利益;为投资者创造价值!在做好产品的同时,我们也致力于成为一家服务于人类社会的企业。

Yantai Donghong Construction Machinery Co., Ltd. is an excellent enterprise, specializing in excavator attachments with development, production and sales ability. Our main products include quick coupler, breaker, grapple, pulveriser, shear, compactor, ripper, earth auger and buckets etc. All products quality is strictly under control from processing to delivery. By continuous innovation and improvement, the company has got the ISO9001, CE Certifications and Technical Patents successfully. Our products have been sold to domestic and overseas customers widely, and long-term partnerships have been developed.

With advanced technology and products, after nearly 10-years steady and rapid development, we have become a leading enterprise of manufacturing excavator attachments in China. We will keep on improving the products to better serve the world market, and we look forward to working with you in the future.

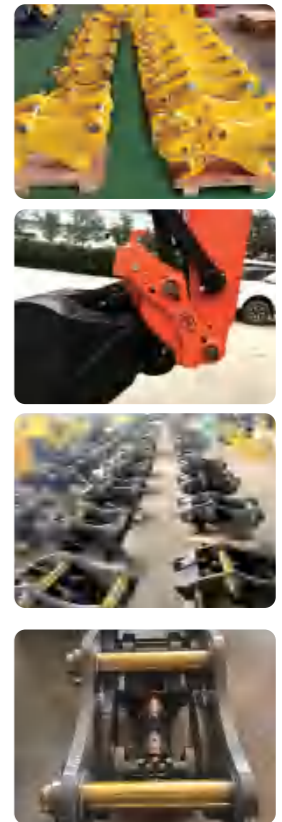
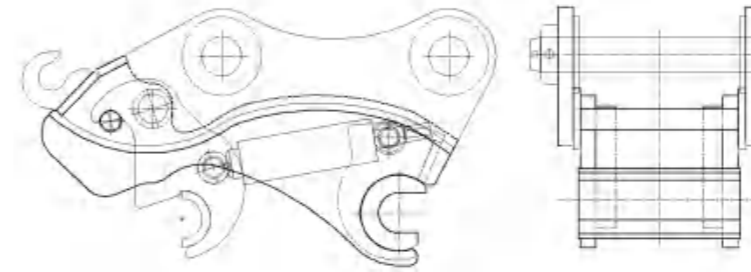


CONTENTS

目录 ▼

公司简介 Company profile	01
机械快速连接器 Mechanical Quick Coupler	03
液压快速连接器 Hydraulic Quick Coupler	04
双保险快速连接器 Double Safety Lock Quick Coupler	05
倾斜快速连接器 Tilting Quick Coupler	06
旋转快速连接器 Rotating Quick Coupler	07
破碎锤 Hydraulic Breaker	08
粉碎钳 Hydraulic Crusher/Pulverizer	09
旋挖钻 Earth Auger	10
打桩机 Pile Hammer	11
振动夯 Hydraulic Plate Compactor	12
液压拇指夹 Hydraulic Thumb	13
加强抓 Demolition Grapple	14
抓木器 Hydraulic Wood Grapple	15
抓石（钢）器 Hydraulic Stone/Scrap Steel Grapple	16
抱式抓木器 Hydraulic Wood Grapple	17
液压夹 Hydraulic Grapple	18
莲花抓 Orange Peel Grapple	19
铲斗夹 Thumb Bucket	20
液压废料抓 Eccentric Pin Hydraulic Grapple	21
松土器 Ripper	22
拆楼剪 Hydraulic Crusher	23
钢材剪 Hydraulic Scrap Shear	24
拆车剪 Hydraulic Car Scrap Shear	25
筛分斗 Screening Bucket	25
清洁斗 Cleaning Bucket	26
挖斗 Bucket	27
网格斗 Skeleton Bucket	28
摇摆斗 Tilt Bucket	29

机械快速连接器 Mechanical Quick Coupler



产品特点:

- 1.采用Q355优质钢材,强度高;
- 2.适用于1-50吨各种型号挖掘机。

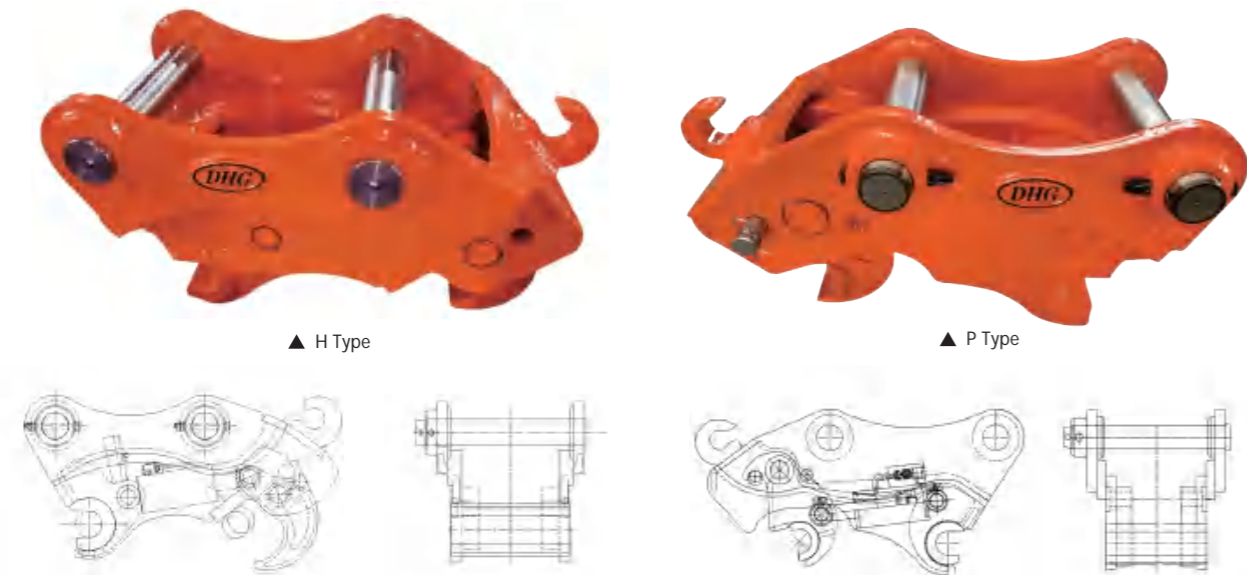
Features:

- 1.Q355 material, high strength;
- 2.Suitable for 1-50 ton excavator.

产品参数 Product Parameters

型号	适配机重	总长度	总高度	总宽度	轴距	开档	上部轴直径	产品重量
Model	Suitable Weight	Total Length	Total Height	Total Width	Pin Distance	Arm Width	Pin Diameter	Weight
Unit	ton	mm	mm	mm	mm	mm	mm	kg
DHG-MINI	1-4	360-475	250-300	175-242	85-200	90-150	25-40	45
DHG-02	5-6	534-545	307	258-263	220-270	155-170	45-50	70
DHG-04	7-9	600	320	270-350	290-360	180-230	50-55	80
DHG-06	10-17	820	410	365-436	360-420	220-315	60-65	180
DHG-08	18-24	944-990	520	449-483	430-520	300-350	70-80	350
DHG-10	25-32	1040	600	480-540	450-560	350-410	90	550
DHG-17	33-45	1006-1173	630	550-660	500-600	370-480	100-110	750
DHG-20	46-50	1100-1200	650	650-700	550-660	480-550	110-130	900

☉ 液压快速连接器 Hydraulic Quick Coupler

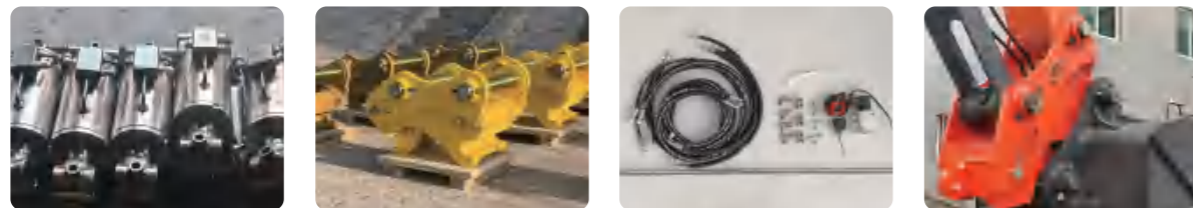


产品特点:

- 1.采用Q355优质钢材,强度高;
- 2.安装简便,迅速高效,轻松实现挖掘机不同前端属具的装卸;
- 3.适用于频繁更换挖掘机前端属具,具备多种挖掘机施工技能的工作场合;
- 4.适用于1-80吨各种型号挖掘机。

Features:

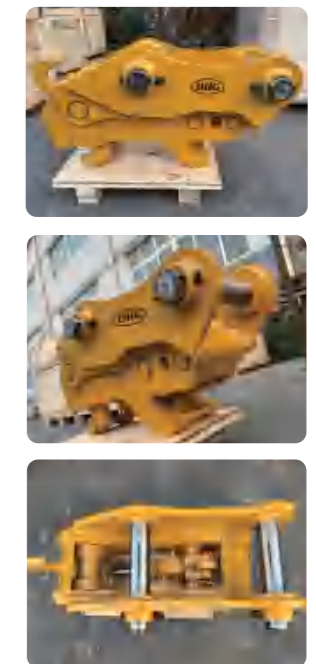
- 1.Q355 material, high strength;
- 2.Easy installation, high efficiency;
- 3.Suitable for working conditions that need excavator using different attachments continually;
- 4.Suitable for 1-80 ton excavator.



产品参数 Product Parameters

型号	适配机重	总长度	总高度	总宽度	轴距	开档	上部轴直径	工作压力	工作流量	产品重量
Model	Suitable Weight	Total Length	Total Height	Total Width	Pin Distance	Arm Width	Pin Diameter	Working Pressure	Working Flow	Weight
Unit	ton	mm	mm	mm	mm	mm	mm	kg/cm ²	l/min	kg
DHG-MINI	1-4	360-475	250-300	175-242	85-200	90-150	25-40	40-100	10-20	45
DHG-02	5-6	534-545	307	258-263	220-270	155-170	45-50	40-100	10-20	70
DHG-04	7-9	600	320	270-350	290-360	180-230	50-55	40-100	10-20	80
DHG-06	10-17	820	410	365-436	360-420	220-315	60-65	40-100	10-20	180
DHG-08	18-24	944-990	520	449-483	430-520	300-350	70-80	40-100	10-20	350
DHG-10	25-32	1040	600	480-540	450-560	350-410	90	40-100	10-20	550
DHG-17	33-45	1006-1173	630	550-660	500-600	370-480	100-110	40-100	10-20	750
DHG-20	46-50	1100-1200	650	650-700	550-660	480-550	110-130	40-100	10-20	900

☉ 双保险快速连接器 Double Safety Lock Quick Coupler



产品特点:

- 1.全系采用Q355优质钢材,保证整体强度;
- 2.安装简便,操作高效,安全系数高;
- 3.更换前端属具时必须使用两个特殊角度的动作,方可更换,保证所配属具的牢靠性;
- 4.适用于3-30吨各种型号挖掘机。

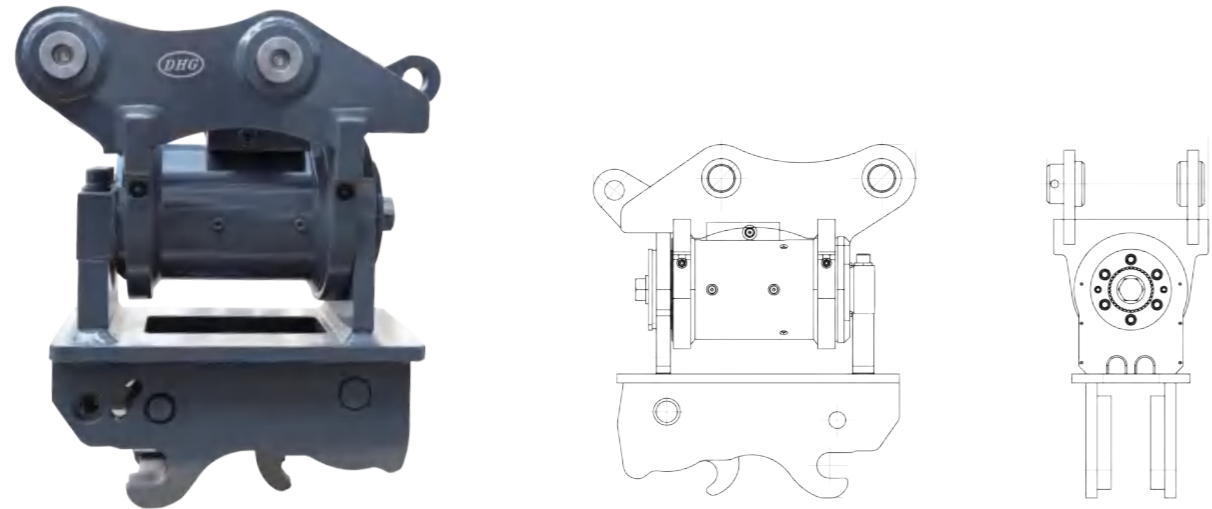
Features:

- 1.Q355 material, high strength;
- 2.Easy installation, high efficiency, more safety;
- 3.Two special angles are needed before changing the different excavator attachments, to ensure the reliability;
- 4.Suitable for 3-30 ton excavator.

产品参数 Product Parameters

型号	适配机重	总长度	总高度	总宽度	轴距	开档	上部轴直径	工作压力	工作流量	产品重量
Model	Suitable Weight	Total Length	Total Height	Total Width	Pin Distance	Arm Width	Pin Diameter	Working Pressure	Working Flow	Weight
Unit	ton	mm	mm	mm	mm	mm	mm	kg/cm ²	l/min	kg
DHG-Mini	3-4	360-475	250-300	175-242	85-200	90-150	25-40	40-100	10-20	45
DHG-02	5-6	534-545	307	258-263	220-270	155-170	45-50	40-100	10-20	70
DHG-04	7-9	600	320	270-350	290-360	180-230	50-55	40-100	10-20	80
DHG-06	10-17	820	410	365-436	360-420	220-315	60-65	40-100	10-20	180
DHG-08	18-24	944-990	520	449-483	430-520	300-350	70-80	40-100	10-20	350
DHG-10	25-32	1040	600	480-540	450-560	350-410	90	40-100	10-20	550

倾斜快速连接器 Tilting Quick Coupler



产品特点:

1. 全系采用Q355优质钢材, 保证整体强度;
2. 摆动油缸扭矩更大, 安全设计;
3. 实现180°左右摆动, 可以适应特殊作业。

Features:

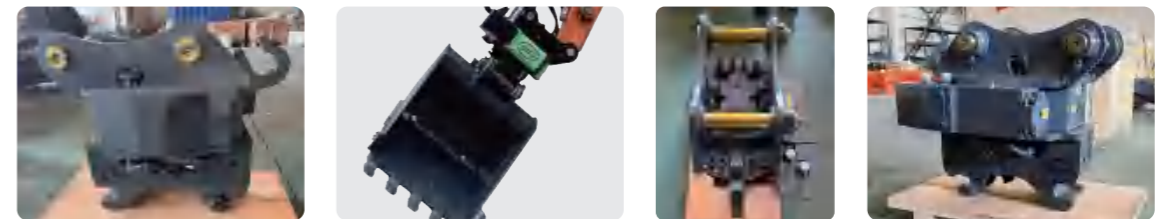
1. Q355 material, high strength;
2. Tilt cylinder with higher torque, safety design;
3. Max tilt degree 180°, working under special conditions.



产品参数 Product Parameters

型号	适配机重	摆动角度	工作压力	工作流量	产品重量
Model	Suitable Weight	Tilt Degree	Working Pressure	Working Flow	Weight
Unit	ton	°	bar	l/min	kg
DHG-Mini	1-4	180°	210	3-6	55
DHG-02	5-6	180°	210	3-6	120
DHG-04	7-9	180°	210	6-12	200
DHG-06	10-17	134°	210	24-28	400
DHG-08	18-24	134°	210	32-44	600

旋转快速连接器 Rotating Quick Coupler



产品特点:

1. 全系采用Q355优质钢材, 保证整体强度;
2. 实现所有属具都具有旋转功能, 适应更多工作环境;
3. 完全自主研发, 采用涡轮蜗杆技术, 旋转速度恒定;
4. 承重能力高、操作灵敏、安全稳定、360°无限旋转。

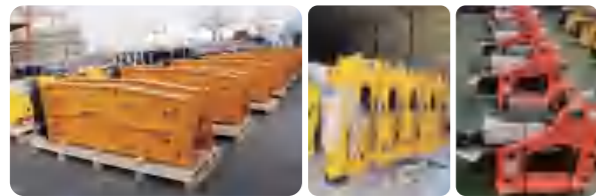
Features:

1. Q355 material, high strength;
2. Rotating function with every excavator attachments;
3. Independent research and development, constant rotating speed;
4. High load capacity, sensitive and easy to operate, security and stability, 360° infinitely rotating.

产品参数 Product Parameters

型号	适配机重	上部轴直径	工作压力	工作流量	旋转速度	产品重量
Model	Suitable Weight	Pin Diameter	Working Pressure	Working Flow	Rotating Speed	Weight
Unit	ton	mm	bar	l/min	rpm	kg
DHG-02	5-9	45-55	120-175	35	6.8	155
DHG-06	10-17	60-65	120-175	60	7.5	420

破碎锤 Hydraulic Breaker



适用对象:

适用于矿山、爆破、建筑、采石场等；
可安装于所有普通液压挖掘机、小型挖掘机及其他载货设备上，
如：滑移装载机、反铲装载机、起重机、伸缩式装载机、轮式装载机
等机械。

Suitable:

Used for mining, demolition, construction, quarry etc;
It can be mounted on all common hydraulic excavator as
well as mini excavator and other carrier like skid steer loader,
backhoe loader, crane, telescopic handler, wheel loader and
other machinery.

产品特点:

- 1.缸体和主阀:精密加工防止拉伤;
- 2.活塞:活塞与中缸体一对一配磨;
- 3.钎杆:42CrMo材质,性能可靠。

Features:

- 1.Cylinder & valves: prevents scuffing with precision finishing
treatment;
- 2.Piston: every piston tolerance is machined perfectly accord
ing to each cylinder;
- 3.Chisel: 42CrMo, exceptional performance and reliability.

产品参数 Product Parameters

型号	适配机重	工作压力	工作流量	冲击频率	管路直径	钎杆直径	产品重量
Model	Suitable Weight	Working Pressure	Working Flow	Impact Rate	Hose Diameter	Chisel Diameter	Weight
Unit	ton	kg/cm ²	l/min	rpm	in	mm	kg
DHG-05	0.6-1	80-110	10-30	500-1200	1/2	35	65
DHG-10	0.8-2.5	90-120	15-30	500-1000	1/2	40	90
DHG-20	1.2-3	90-120	20-40	500-1000	1/2	45	120
DHG-30	2.5-4.5	110-140	25-40	500-900	1/2	53	170
DHG-40	4-7	95-130	30-45	450-750	1/2	68	270
DHG-43	6-9	100-130	40-80	450-950	1/2	75	380
DHG-45	7-14	130-150	45-85	400-800	3/4	85	600
DHG-50	11-16	150-170	80-110	450-630	3/4	100	780
DHG-70	18-26	160-180	125-150	350-600	1	135	1650
DHG-81	18-26	160-180	120-150	400-490	1	140	1700
DHG-121	28-32	170-190	190-250	300-400	5/4	155	2700
DHG-131	30-40	190-230	200-260	250-400	5/4	165	3000
DHG-151	37-45	200-260	210-270	230-350	5/4	175	4200

粉碎钳 Hydraulic Crusher/Pulverizer



适用对象:

房屋梁柱, 钢筋混凝土等破拆作业。

Suitable:

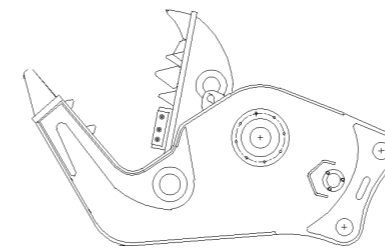
Crush concrete building materials.

产品特点:

- 1.Q355优质钢材, 保证整体强度;
- 2.刀块采用耐磨莫合金钢, 抗高温, 耐变形;
- 3.可增加360°旋转功能。

Features:

- 1.Q355 material, high strength;
- 2.Equipped with steel bar cutter, high tempera-
ture resistance, deformation resistance;
- 3.360° rotating function option.



产品参数 Product Parameters

型号	适配机重	开口尺寸	总长度	总宽度	总高度	最大破碎力	最大剪切力	工作压力	产品重量
Model	Suitable Weight	Jaw Opening	Total Length	Total Width	Total Height	Max Crushing Force	Max Shear Force	Working Pressure	Weight
Unit	ton	mm	mm	mm	mm	ton	ton	kg/cm ²	kg
DHG-02	5-9	450±30	1170-1300	310-350	740-760	83	126	230	320
DHG-06	10-17	700±30	1675-1765	450-590	1100-1140	105	165	280	900
DHG-08	18-24	830±30	2135-2220	520-560	1310-1440	165	210	300	1600
DHG-10	25-32	930±30	2545	600	1650	200	290	320	2100

旋挖钻 Earth Auger

适用对象:

应用于植树, 电线杆孔, 钻井, 光伏电桩等领域。

Suitable:

Used for tree planting, pole hole, drilling.

产品特点:

- 1.设计合理, 使用效率高寿命长;
- 2.叶片采用耐磨板;
- 3.齿轮采用航空标准加工工艺。

Features:

- 1.Rational design, high efficiency and long service time;
- 2.Wear-resisting plate impeller;
- 3.Aviation standard applied in processing of gear.



产品参数 Product Parameters

型号	适配机重	工作流量	极限扭矩	工作压力	转速	油管直径	钻头直径
Model	Suitable Weight	Working Flow	Max Torque	Working Pressure	Rotary Speed	Oil Pipe Diameter	Drill Diameter
Unit	ton	l/min	n·m	kg/cm ²	rpm	in	mm
DHG-2000	1-2.5	23-53	1871	205	40-92	1/2	100-400
DHG-2500	1.5-3	30-61	2432	205	40-82	1/2	100-500
DHG-3000	2-3.5	30-61	2877	240	40-81	1/2	100-600
DHG-3500	2.5-4.5	30-68	3614	240	32-72	1/2	100-750
DHG-4500	3-5	38-76	4218	240	32-64	1/2	100-900
DHG-5000	4.5-7	38-76	5056	240	29-58	1/2	150-600
DHG-5500	5-7	45-83	5910	240	28-50	1/2	150-750
DHG-6000	6-8	45-106	6150	240	34-80	3/4	150-900
DHG-7000	7-10	61-121	6931	240	37-72	3/4	150-900
DHG-8000	8-12	61-136	8048	240	29-64	3/4	150-900
DHG-10000	10-13	70-136	10778	240	26-45	3/4	150-900
DHG-12000	13-17	80-140	11976	240	22-43	1	150-900
DHG-15000	13-17	80-151	15046	240	20-39	1	150-1200
DHG-20000	13-20	80-170	19039	240	17-34	1	150-1200
DHG-25000	15-23	90-180	24949	240	16-30	1	150-1200
DHG-50000	21-50	100-280	50195	280	11-30	1	300-2400

打桩机 Pile Hammer

适用对象:

各类管材、钢板等打拔桩作业。

Suitable:

Applied to driving and pulling steel plate, cement pile, steel rail, round pipe, steel H-pile, Lason pile.

产品特点:

- 1.采用Q355锰板钢材, 强度高、耐腐蚀;
- 2.采用进口旋转马达;
- 3.采用进口液压振动马达, 坚固耐用;
- 4.一体式设计, 安全稳定、故障率低。

Features:

- 1.Q355 material, high strength, corrosion resistance;
- 2.Imported rotation motor;
- 3.Imported hydraulic vibrating motor;
- 4.Integrated design, safe, low failure rate.



产品参数 Product Parameters

型号	适配机重	偏心力矩	振频	离心力	工作压力	工作流量	旋转角度	产品重量
Model	Suitable Weight	Eccentric Moment	Frequency	Centrifugal Force	Working Pressure	Working Flow	Rotate Angle	Weight
Unit	ton	nm	rpm	kn	kg/cm ²	l/min	°	kg
DHG-08	20-30	36	3000	360	320	250	180	2900
DHG-10	30-40	52	2800	450	320	250	180	3200
DHG-17	40-50	70	2800	600	320	300	180	3800

振动夯 Hydraulic Plate Compactor

适用对象:

3.5-32吨挖掘机。
斜坡、沟渠、基础回填、地基夯实等各种工况的夯实作业。

Suitable:

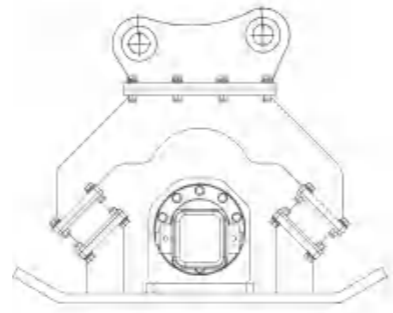
3.5-32 ton excavator.
Leveling of high way and railway slopes, roads, construction, building floors.

产品特点:

- 1.Q355钢材, 保证整体强度;
- 2.设计新颖, 操作方便, 接液压破碎锤管路;
- 3.采用博姆克马达、高效、稳定。

Features:

- 1.Q355 material, high strength;
- 2.New design, easy operation, using the same circuit as the hydraulic breaker;
- 3.Imported motor, stable and reliable in use.



产品参数 Product Parameters

型号	适配机重	上部轴直径	打击力	最大冲击频率	工作压力	冲击面积	工作流量	总高度	总宽度	产品重量
Model	Suitable Weight	Pin Diameter	Impact Force	Impact Rate Max	Working Pressure	Impact Size	Working Flow	Total Height	Total Width	Weight
Unit	ton	mm	ton	rpm	kg/cm ²	mm ²	l/min	mm	mm	kg
DHG-Mini	3-4	25/40	3	2000	100-130	590*330	30-60	435	442	200
DHG-02/04	5-9	45/55	4	2000	110-140	900*550	45-75	730	550	300
DHG-06	10-17	60/65	6.5	2000	150-170	1160*700	85-105	900	700	600
DHG-08	18-24	70/80	15	2000	160-180	1250*900	120-170	1000	900	850
DHG-10	25-32	90	15	2000	160-180	1250*900	120-170	1050	900	900

液压拇指夹 Hydraulic Thumb

适用对象:

辅助挖斗实现抓取的作用, 防止石头等掉落;

Suitable:

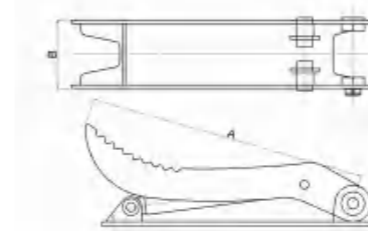
Make bucket much more functional and keep rocks or other objects from dropping;

产品特点:

- 1.Q355优质钢材, 保证整体强度;
- 2.一指多用, 简便的辅助装置, 成本低, 效率高;
- 3.安装方便, 操作灵活;
- 4.支持定制;

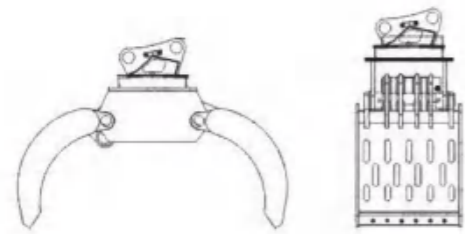
Features:

- 1.Q355 material, high strength;
- 2.Suitable for different bucket, supportive tool, lower cost, high efficiency;
- 3.Easy installation, easy operation;
- 4.Support customization;



产品参数 Product Parameters

型号	适配机重	产品长度A	产品宽度B	流量	工作压力	产品重量
Model	Suitable Weight	Length A	Width B	Oil Flow	Working Pressure	Weight
Unit	ton	mm	mm	mm	mm	kg
DHG-Mini	1-4	910	220	30-55	110-140	150
DHG-02	5-9	1220	300	50-100	120-160	180
DHG-06	10-17	1320	410	90-110	150-170	300
DHG-08	18-24	1530	410	100-140	160-180	440



适用对象:

强硬建筑垃圾的装卸及拆建、废铁的装卸、高强度杂物的拆卸。

Suitable:

Demolition of solid structures, scrap handling, cleaning, moving, loading, sorting and organizing materials in order.

产品特点:

- 1.大小杂物都可以一同抓起;
- 2.耐磨板材设计,更耐磨,使用更持久;
- 3.M+S马达带刹车功能;
- 4.安全稳定,操作方便故障率低。

Features:

- 1.Capable of grabbing materials of different sizes in bulk;
- 2.Abrasion resistant steel, durable in use;
- 3.Driven by M+S motor with brake valve;
- 4.Safe, stable and durable in use.

产品参数 Product Parameters

型号	适配机重	旋转角度	开口尺寸	产品高度	产品宽度	工作压力	工作流量	产品重量
Model	Suitable Weight	Rotate Angle	Jaw Opening	Height	Width	Working Pressure	Working Flow	Weight
Unit	ton	°	mm	mm	mm	kg/cm ²	l/min	kg
DHG-02/04	5-9	360	1560	1020	600	120-160	50-100	350
DHG-06	10-17	360	2070	1380	800	150-180	90-110	950
DHG-08	18-24	360	2150	1550	950	160-180	100-140	1350



适用对象:

抓取木头,农作物等。

Suitable:

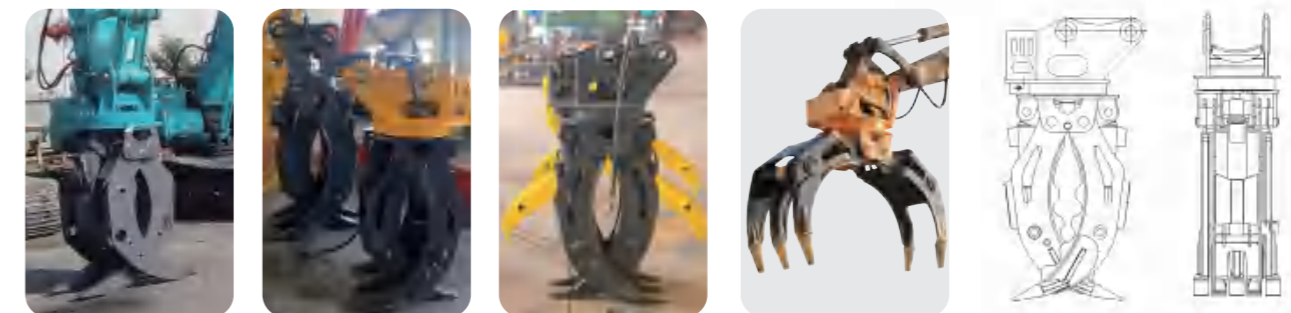
Wood and other large scraps handing, moving, loading and organizing.

产品特点:

- 1.采用Q355优质钢材,保证整体强度;
- 2.M+S进口马达带刹车功能;
- 3.支持定制,下抓可定做:3+2,4+3,5+4;
- 4.安全稳定、操作方便及故障率低。

Features:

- 1.Q355 material, high strength;
- 2.Driven by M+S motor with brake valve;
- 3.Support customization option of 3+2, 4+3, and 5+4 fingers;
- 4.Safe, stable and durable in use.



产品参数 Product Parameters

型号	适配机重	开口尺寸	工作压力	设定压力	工作流量	油缸容积	产品重量
Model	Suitable Weight	Jaw Opening	Working Pressure	Setting Pressure	Working Flow	Cylinder Volume	Weight
Unit	ton	mm	kg/cm ²	kg/cm ²	l/min	l	kg
DHG-02/04	5-9	1400	110-140	170	30-55	2*4.0	430
DHG-06	10-17	1800	150-170	190	90-110	2*8.0	740
DHG-08	18-24	2300	160-180	200	100-140	2*9.7	1380
DHG-10	25-32	2500	160-180	210	130-170	2*12	1700

抓石(钢)器 Hydraulic Stone/Scrap Steel Grapple



适用对象:

抓取各种石材, 废料等。

Suitable:

Stones and scrap steel handing, moving, loading and organizing.

产品特点:

- 1.采用Q355优质钢材, 保证整体强度;
- 2.M+S进口马达带刹车功能;
- 3.支持定制, 下抓可定做: 3+2, 4+3, 5+4;
- 4.安全稳定、操作方便及故障率低。

Features:

- 1.Q355 material, high strength;
- 2.Driven by M+S motor with brake valve;
- 3.Support customization option of 3+2, 4+3, and 5+4 fingers;
- 4.Safe, stable and durable in use.



产品参数 Product Parameters

型号	适配机重	开口尺寸	工作压力	设定压力	工作流量	油缸容积	产品重量
Model	Suitable Weight	Jaw Opening	Working Pressure	Setting Pressure	Working Flow	Cylinder Volume	Weight
Unit	ton	mm	kg/cm ²	kg/cm ²	l/min	l	kg
DHG-02/04	5-9	1400	110-140	170	30-55	2*4.0	430
DHG-06	10-17	1800	150-170	190	90-110	2*8.0	740
DHG-08	18-24	2300	160-180	200	100-140	2*9.7	1380
DHG-10	25-32	2500	160-180	210	130-170	2*12	1700

抱式抓木器 Hydraulic Wood Grapple



适用对象:

抓取木头, 农作物等。

Suitable:

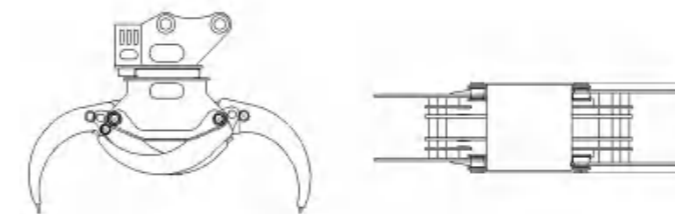
Wood and other large scraps handing, moving, loading and organizing.

产品特点:

- 1.采用Q355优质钢材, 保证整体强度;
- 2.M+S进口马达带刹车功能;
- 3.安全稳定、操作方便及故障率低。

Features:

- 1.Q355 material, high strength;
- 2.Driven by M+S motor with brake valve;
- 3.Safe, stable and durable in use.



产品参数 Product Parameters

型号	适配机重	开口尺寸	工作压力	设定压力	工作流量	油缸容积	产品重量
Model	Suitable Weight	Jaw Opening	Working Pressure	Setting Pressure	Working Flow	Cylinder Volume	Weight
Unit	ton	mm	kg/cm ²	kg/cm ²	l/min	l	kg
DHG-02/04	5-9	1400	110-140	170	30-55	2*4.0	430
DHG-06	10-17	1800	150-170	190	90-110	2*8.0	740
DHG-08	18-24	2300	160-180	200	100-140	2*9.7	1380
DHG-10	25-32	2500	160-180	210	130-170	2*12	1700

液压夹 Hydraulic Grapple



适用对象:

木质建筑结构的拆装分类摆放以及建筑、生活垃圾杂物的清理、装卸。

Suitable:

Demolition of wooden structures, scrap handing, cleaning, moving, loading, sorting and organizing.

产品特点:

- 1.采用Q355优质钢材, 保证整体强度;
- 2.操作方便, 故障率低;
- 3.安装简便, 接破碎锤管路;
- 4.支持定制, 下抓可定制3+2,4+3,5+4等。

Features:

- 1.Q355 material, high strength;
- 2.Easy operation and Multi-function;
- 3.Easy installation, sharing the same pipes with hydraulic breaker;
- 4.Support customization, finger options of 3+2, 4+3, 5+4.



产品参数 Product Parameters

型号	适配机重	开口尺寸	总长度	总宽度	总高度	产品重量
Model	Suitable Weight	Jaw Opening	Total Length	Total Width	Total Height	Weight
Unit	ton	mm	mm	mm	mm	kg
DHG-Mini	1-2	960	360	380	840	55-85
DHG-02	3-6	1200	405	525	1180	120-150
DHG-04	7-9	1600	540	600	1320	150-180
DHG-06	10-17	1800	630	785	1750	400-550
DHG-08	18-24	2200	695	920	2050	650-800

莲花抓 Orange Peel Grapple



适用对象:

抓取废钢, 废塑料, 垃圾等。

Suitable:

Steel scraps, waste,garbage.

产品特点:

- 1.花瓣选用优质耐磨板;
- 2.使用寿命长, 抓举力量大;
- 3.可增加360°旋转功能。

Features:

- 1.Use high level wear-resisting plate steel;
- 2.High carrying capacity and long service life;
- 3.Customization of 360° rotating function.



产品参数 Product Parameters

型号	适配机重	张开宽度	闭合宽度	开口高度	张开高度	油缸推力	工作压力	产品重量
Model	Suitable Weight	Open Width	Close Width	Open Height	Opening Height	Cylinder Thrust	Working Pressure	Weight
Unit	ton	mm	mm	mm	mm	ton	kg/cm ²	kg
DHG-02	5-9	1260	970	890	1060	4	180-210	360-400
DHG-06	10-17	1580	1210	1110	1325	6.5	210-250	700-800
DHG-08	18-24	1975	1510	1390	1660	10.5	210-250	950-1100
DHG-10	25-32	2275	1740	1600	1910	13	210-250	1500-1700

铲斗夹 Thumb Bucket

适用对象:

建筑垃圾生活杂物的清理装卸。

Suitable:

Grabbing, cleaning, moving, loading of construction garbage and waste.

产品特点:

1. Q355优质钢材, 保证整体强度;
2. 安装方便, 接破碎锤管路, 使用双向脚踏阀。

Features:

1. Q355 material, high strength;
2. Easy installation, sharing with the same pipe of hydraulic breaker, bothway foot valve.



产品参数 Product Parameters

型号	适配机重	工作流量	工作压力	开口尺寸	产品重量
Model	Suitable Weight	Working Flow	Working Pressure	Jaw Opening	Weight
Unit	ton	l/min	kg/cm ²	mm	kg
DHG-02	5-9	30-90	120-160	1250	270
DHG-06	10-17	90-110	150-170	1750	750
DHG-08	18-24	100-140	160-180	2100	1250

液压废料抓 Eccentric Pin Hydraulic Grapple

适用对象:

园林, 垃圾场, 矿山。

Suitable:

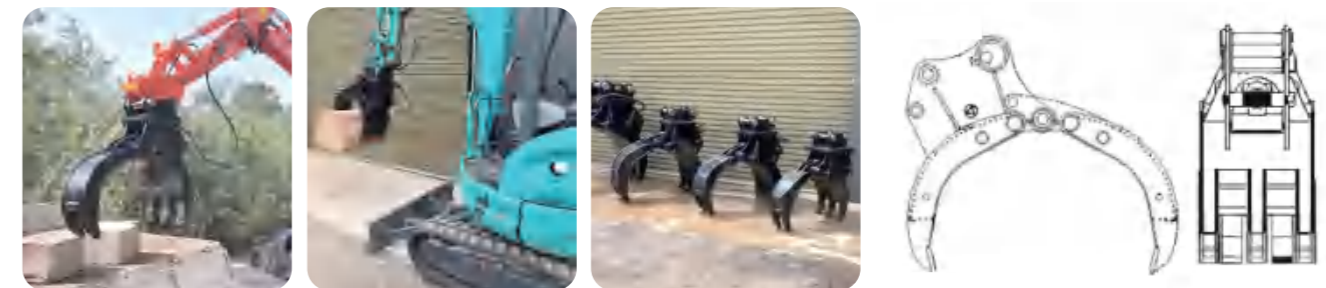
Widely used in garbage station, garden, and mines.

产品特点:

1. 采用Q355优质钢材, 保证整体强度;
2. 设计新颖;
3. 坚固可靠。

Features:

1. Q355 material, high strength;
2. New design;
3. Reliable and stable in use.



产品参数 Product Parameters

型号	适配机重	工作压力	开口宽度	总高度	总宽度	产品重量
Model	Suitable Weight	Working Pressure	Opening Width	Total Height	Total Width	Weight
Unit	ton	kg/cm ²	mm	mm	mm	kg
DHG-Mini	1-4	80-110	750	900	400	280
DHG-02	5-6	110-140	835	1000	490	300
DHG-04	7-9	120-160	890	1090	540	370
DHG-06	10-17	150-170	1225	1320	620	660
DHG-08	18-24	160-180	1530	1680	820	1060



适用对象:

风化石硬土、冻土层有裂缝的岩层。

Suitable:

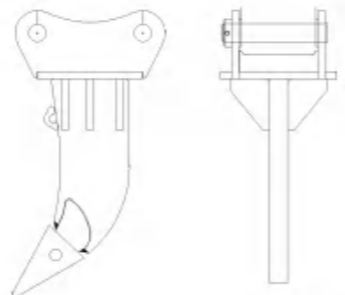
Used for hard soil such as weathered soil and rocks, tundra etc.

产品特点:

- 1.采用Q355优质钢材,保证整体强度;
- 2.强度高,耐腐蚀;
- 3.支持定制双齿。

Features:

- 1.Q355 material, high strength;
- 2.Corrosion resistance and long service life;
- 3.Support customization of teeth.



产品参数 Product Parameters

型号	适配机重	轴距	总宽度	总高度	总长度	轴直径	开档	产品重量
Model	Suitable Weight	Pin Distance	Total Width	Total Height	Total Length	Pin Diameter	Arm Width	Weight
Unit	ton	mm	mm	mm	mm	mm	mm	kg
DHG-Mini	1.5-4	85-200	260	310	700	25-40	90-150	50
DHG-02/04	5-9	220-310	320	420	800	45-55	180-230	80
DHG-06	12-18	390	430	530	1000	60-70	220-315	280
DHG-08	19-24	465	530	670	1400	70-80	300-350	400
DHG-10	25-32	515	610	700	1620	90	350-410	550
DHG-17	36-45	580	680	800	1720	100-120	370-480	900



适用对象:

破碎拆除房屋,破碎拆除化工设备。

Suitable:

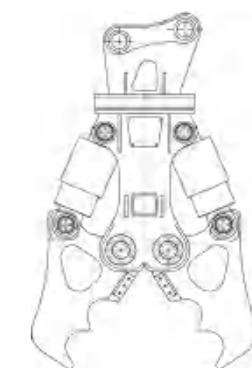
Used to demolish building and constructions;

产品特点:

- 1.压刀选用高级耐磨板,耐用;
- 2.破碎力大,加工精度高,不易变形;
- 3.可选360°旋转功能。

Features:

- 1.Use high level wear-resisting plate steel, durable in use;
- 2.High level machining precision and high breaking capacity;
- 3.Customization of 360° rotating function.



产品参数 Product Parameters

型号	适配机重	开口宽度	开口深度	总长度	油缸力	流量	工作压力	产品重量
Model	Suitable Weight	Opening Width	Jaw Depth	Total Length	Cylinder Force	Oil Flow	Working Pressure	Weight
Unit	ton	mm	mm	mm	ton	L/min	kg/cm ²	kg
DHG-02	5-6	195	200	1350	40	60-100	200-250	380
DHG-04	7-9	290	290	1900	55	90-120	250-300	650
DHG-06	10-17	375	400	2100	75	90-120	250-300	1220
DHG-08	18-24	445	525	2700	110	150-200	320-350	2100
DHG-10	25-32	565	630	3300	145	200-250	320-350	3300
DHG-17	33-45	670	720	3700	200	250-300	320-350	4700

钢材剪 Hydraulic Scrap Shear

适用对象:

适用于剪切各种钢结构, 用于废钢厂, 报废机车厂, 化工厂等。

Suitable:

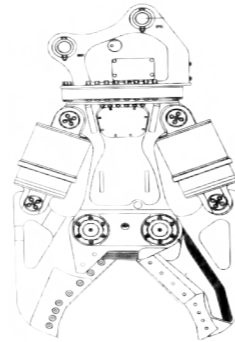
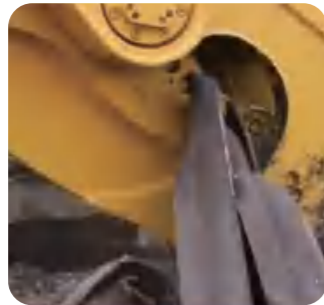
Widely used in steel scrap vehicle factory;

产品特点:

- 1.材料选用高级耐磨板, 耐用;
- 2.破碎力大, 加工精度高, 不易变形;
- 3.支持定制360°旋转功能。

Features:

- 1.Use high level wear-resisting plate steel, durable in use;
- 2.High level machining precision and high breaking capacity;
- 3.Customization of 360° rotating function.



产品参数 Product parameters

型号	适配机重	开口尺寸	产品重量	工作压力	产品长度
Model	Suitable Weight	Jaw Opening	Weight	Working Pressure	Length
Unit	ton	mm	kg	kg/cm ²	mm
DHG-Mini	2-4	300	1100	20-25	1120
DHG-02	5-9	350	2100	20-25	1300
DHG-06	10-17	415	3000	25-28	1570
DHG-08	18-24	515	3500	28-30	2000
DHG-10	25-32	625	4500	28-30	2250

拆车剪 Hydraulic Car Scrap Shear

适用对象:

分解报废汽车, 拆废钢等。

Suitable:

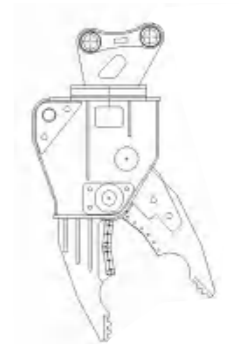
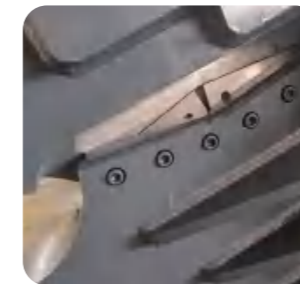
Used to split scraped vehicle and steel products.

产品特点:

- 1.压刀选用耐磨板, 耐用;
- 2.破碎力大, 加工精度高, 不易变形;
- 3.刀片不易碎; 前端设计鳄鱼嘴式撕咬功能;
- 4.支持定制360°旋转功能。

Features:

- 1.Use high level wear-resisting plate steel, durable in use;
- 2.High level machining precision and high breaking capacity;
- 3.High quality blade;
- 4.Customization of 360° rotating function.



产品参数 Product Parameters

型号	适配机重	开口尺寸	总长度	总宽度	刀片长度
Model	Suitable Weight	Jaw Opening	Total Length	Total Width	Blade Length
Unit	ton	mm	mm	mm	mm
DHG-06	12-18	670	2020	650	170*2
DHG-08	19-24	840	2530	820	200*2
DHG-10	25-32	960	2950	950	220*4
最大剪切力	工作压力	工作流量	电机压力	电机流量	电机转速
Max Shear Force	Working Pressure	Working Flow	Motor Pressure	Motor Flow	Motor Speed
ton	kg/cm ²	l/min	kg/cm ²	l/min	rpm
160	250	180-190	100	20-30	10-12
208	280	200-240	100	20-30	10-12
249	249	230-260	100	20-30	10-12

筛分斗 Screening Bucket



适用对象:

需要通过旋转筛分滚筒筛出土壤和碎屑的工矿作业。

Suitable:

Sift out soil and debris by spinning the screening drum.

产品特点:

筛分滚筒由实心钢制成,提供更好的筛分和物料处理,效率更高。

Features:

Screening drum is made of solid steel, provides better sifting and materials handling, more efficiency.

产品参数 Product Parameters

型号	适配机重	开口尺寸	产品重量	总宽度
Model	Suitable Weight	Jaw Opening	Weight	Total Width
Unit	ton	mm	kg	mm
DHG-04	6-9	50	310	220
DHG-06	12-18	60-65	360	230
DHG-08	19-24	80	465	250
DHG-10	25-36	90-100	530	250

清洁斗 Cleaning Bucket



适用对象:

适用于大容量的挖沟、平整斜坡等的清洗工程。

Suitable:

Applied to ditching, slooping, grading and other cleaning works by large capacity and double cutting.

产品参数 Product Parameters

型号	适配机重	轴径	轴距	产品宽度	开档
Model	Suitable Weight	Pin Diameter	Pin Distance	Width	Arm Width
Unit	ton	mm	mm	mm	mm
DHG-04	6-9	50-55	310	1200	220
DHG-06	12-18	60-70	360	1500	260
DHG-08	19-24	70-80	465	1800	340
DHG-10	25-36	90	530	2000	390

挖斗 Bucket



适用对象:

- 1.标准斗主要用于挖掘和砂砾石及土壤等轻载作业环境;
- 2.岩石斗主要用于开采硬质土壤、硬石或燧石,用于在硬岩石等高磨蚀性应用中进行装载作业。

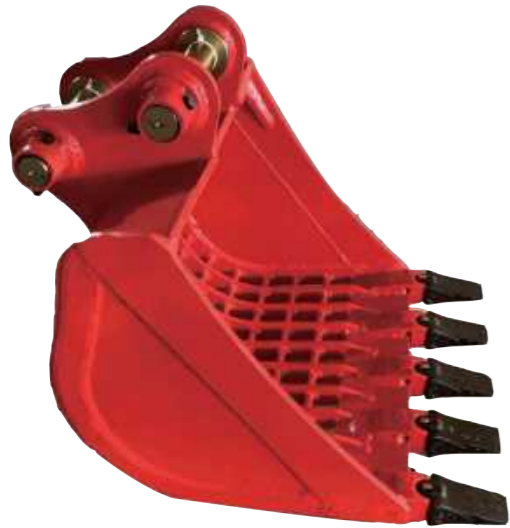
Suitable:

- 1.GD Bucket is mainly used for excavation, sand gravel, soil and other light load operating environment;
- 2.Rock Bucket is mainly used for mining hard gravel mixed protector with hard soil, hard stone or flint, used for loading in highly abrasive applications such as severe rock.

产品参数 Product Parameters

型号	材料	易损件	应用
Model	Material	G.E.T	Application
标准斗/GD Bucket	Q355+NM400	Adapter, Teeth, Side Cutter	Main used for excavation, sand gravel, soil and other light load operating conditions.
岩石斗/Rock Bucket	Q355+NM400	Adapter, Teeth, Side Cutter	Main used for digging hard soil, mixed with a relative soft stone and clay softer stones, and other light load operating conditions.
加强斗/HD Bucket	Q355+NM400	Adapter, Teeth, Side Cutter	Mainly used for mining hard gravel mixed with hard soil, hard stone or flint. Used for loading in highly abrasive applications such as severe rock.

网格斗 Skeleton Bucket



适用对象:

广泛应用于农、林、水利工程中的松散物料的筛分。

Suitable:

Widely applied to loose materials in govern-mental, agricultural, forestry, water conservancy projects.

产品特点:

筛格尺寸接受根据工作环境定制。

Features:

Support customization based on customers' working environment.



产品参数 Product Parameters

型号	适配机重	轴径	轴距	产品宽度	开档
Model	Suitable Weight	Pin Diameter	Pin Distance	Width	Arm Width
Unit	ton	mm	mm	mm	mm
DHG-04	7-9	50	310	1200	220
DHG-06	12-18	60-65	360	1500	260
DHG-08	19-24	80	465	1800	340
DHG-10	25-36	90-100	530	2000	390

摇摆斗 Tilt Bucket



适用对象:

设计用于无需挖掘机移动的标准沟渠, 平整和轻载物料工程。

Suitable:

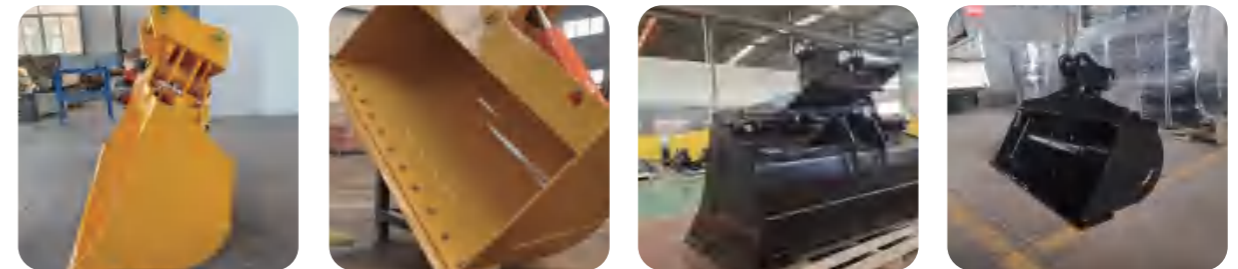
Designed to work for standard ditching, grading and light material loading without excavator moving.

产品特点:

- 1.通过油缸控制摆动, 最大角度可达45°;
- 2.有效减少机器的磨损和油耗。

Features:

1. Controlled to swing by cylinder and the biggest angle is up to 45°;
2. Reduce the wearing of machine and fuel consumption.



产品参数 Product Parameters

型号	适配机重	轴径	轴距	产品长度	产品宽度	产品高度	开档
Model	Suitable Weight	Pin Diameter	Pin Distance	Length	Width	Height	Arm Width
Unit	ton	mm	mm	mm	mm	mm	mm
DHG-02	4-6	45	245	1200	790	920	170
DHG-04	6-8	50	310	1400	870	1010	220
DHG-06	12-18	60-65	360	1700	1070	1210	260
DHG-08	19-24	80	465	1900	1200	1480	340
DHG-10	25-36	90-100	530	2030	1360	1730	390

*根据挖掘机型号不同, 客户定制, 以及产品升级, 产品参数会有所浮动, 数据改动不做另行通知。

The specifications of each product may vary with different excavator model, customization and product improvement; and are subjected to change without prior notice.