

*Korean manufacturer
of **CRAWLER** parts
for **HEAVY EQUIPMENT***



PUKDOO Industrial Co.,Ltd

Factory#1 : 90, Beonnyeong-Ro Danwon-Gu, Ansan-Si, Gyeonggi-Do Korea 15416
TEL : 82-31-433-4521 FAX: 82-31-432-4450
EMAIL : pukdoo@pukdoo.com
HOME PAGE : www.pukdoo.com

Factory#2 : 79, Gunjacheon-Ro, 237Beon-Gil, Siheung-Si, Gyeonggi-Do, Korea 15084
China Factory : Lutun-Town Bayuquan Yingkou-Si China
TEL : 86-417-720-5562

CEO Greetings

PUKDOO Industrial has been manufacturing undercarriage parts for heavy equipment since it was founded in 1995. The company has been busy exploring foreign markets with its own brand of excellent quality parts, and now exports them to more than 30 countries.

PUKDOO Industrial's products are now favored both in the aftermarket as well as by heavy equipment makers. PUKDOO Industrial has grown together with its customers over the last two decades through continual development of new products, surprising customers with its level of quality, and ability to fill orders quickly.

We will not be content with our successes so far, but are committed to innovation that constantly strengthens the trust our customers have in us.



D.M. Park / President

COMPANY HISTORY

1995 ~

1995. Jan

- Established in Bucheon City.
Registered as a partner of DOOSAN INFRACORE for the supply of sprockets and idlers for the AM

1995. Apr

- Exports begun to Southeast Asia (Singapore, Thailand, Malaysia and Indonesia)

1997. Aug

- Factory moved from Bucheon City to Siheung City

1999. May

- Exports begun to the USA

2000 ~

2002. Mar

- Developed and supplied idlers for bulldozers

2002. Aug, Sep

- Registered as a limited company with a capital of \$300,000
- Established plant in Dalian, China

2005. Aug

- ISO 9002 Quality Control & Assurance certified

2006. May, Sep

- ISO 9001 qualified

- Exports begun to TAKEUCHI Japan as OEM supplier

2006. Nov

- Awarded Export Prize for achieving US \$5 million in exports

2010 ~

2010. Dec

- Achieved an annual turnover of US \$10 million

2011. Nov

- Began supplying classic models to Caterpillar

2013. May

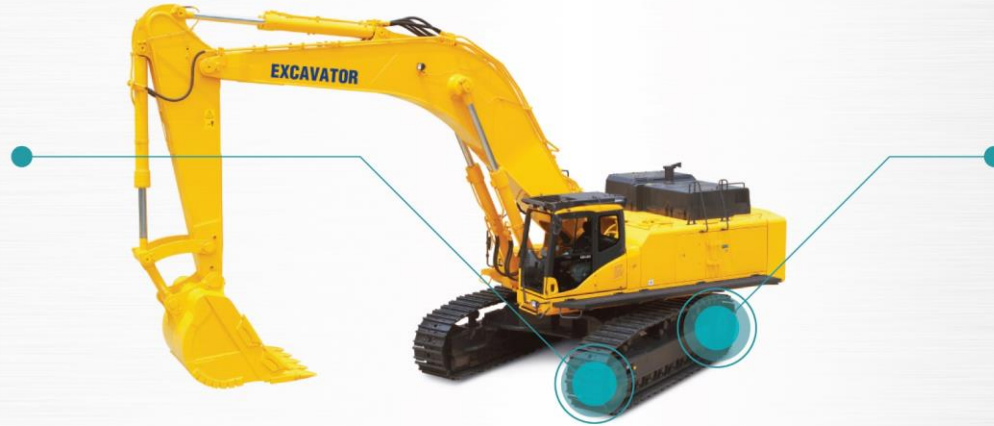
- Set up heat treatment machinery In-house
- Began supplying to Caterpillar General duty

2015. Aug, July, Nov

- Awarded Export Prize for achieving US \$10 million in exports
- Began supplying idlers to LIEBHERR OEM
- Began supplying sprockets to HITACHI AM

IDLERS

Adjust track tension through connection to the adjustment cylinder to steer the equipment.



SPROCKETS

Fixed onto the travel motor, transfer power to rotate the track.



PUKDOO Industrial has its own dedicated R&D lab for development of heavy equipment parts, and an unparalleled level of technology applicable to idlers and sprockets obtained through industry-academic cooperation. You will find PUKDOO Industry parts in the products of major heavy equipment makers such as Caterpillar, Komatsu, Hitachi, John Deere, Doosan, Volvo, Hyundai and Kobelco.

IDLERS



SPROCKETS



Korean manufacturer of
crawler parts for heavy equipment



PRODUCTION PROCESS



GLOBAL NETWORK



PUKDOO has been exporting high quality products to over 50 customers all over the world.





Korean manufacturer of
crawler parts for heavy equipment



PUKDOO Industrial Co., Ltd. specializes in manufacturing idlers and sprockets,
the essential undercarriage parts for excavators and bulldozers.

“

PUKDOO Industrial has integrated its casting, machining, heat treatment
and assembly processes under one roof,
and leads the global market through a wide variety of excellent quality products.

”

