

Filament Wound High Load Self-lubricatings Bearings

索力特轴承

OURSOLID[®]

www.oursolid.com



Made in China

ISO9001-2015 Quality system certified

Enterprise Profile

OURSOLID/索力特成立于 2007 年 3 月，坐落在美丽的中国东部港口城市——宁波象山，离北仑港和栎社国际机场仅一小时路程。

OURSOLID/索力特是全球最为专注和专业的复合材料产品的制造商之一。OURSOLID/索力特凭借多年一直专注和研究复合材料的经验、同时不断引进和吸收国际先进生产技术，以市场为导向，不断开发出具有国际竞争力的产品，服务于全球电工电气，机械制造等工业领域。

OURSOLID/索力特主要设备：拥有先进的计算机控制系统缠绕机、编织机、高温智能固化设备、数控加工中心、PV 试验机等设备，完全按照国际、行业、客户标准生产，同时为客户提供特殊解决方案。

OURSOLID/索力特主要产品有：高承载自润滑轴承系列、滑块系列，气缸管系列，复合套管系列…广泛运用于各种 新能源、工程机械、建筑机械、医疗机械、包装机械、食品机械、船舶机械、航空航天领域、智能装备、电工电气领域。

OURSOLID/索力特主要客户：宁德时代产业链、中科院等离子物理研究所、中船重工、华中科技大学、柳工机械、圣戈班、摩根、GE、日本三菱、日本高压电气、西门子等国际知名公司，我们已经服务于全球 30 多个国家的 100 多家企业，客户主要分布于中国、美国、欧盟、日本、韩国、阿根廷、印度、中国台湾等国家和地区……

欢迎国内外客户真诚合作！同时愿意为世界各地客户提供特殊领域解决方案！OURSOLID 的成长过程，将是不推动和引领世界自润滑轴承变革与前行的历史！

OURSOLID was founded in March 2007 and is located in beautiful eastern port city—Ningbo, only a 30-minute drive to Beilun Port and Lishe International Airport.

OURSOLID is one of the most professional manufacturers of composite material products. OURSOLID continuously introduces and absorbs international advanced production technology, continuously develops products with international competitiveness by market orientation, and serves global electricity, machinofacture and other industrial fields, by many years of experience in research of composite materials.

OURSOLID major equipment: Advanced computer control system winding machines, braiding machines, high-temperature intelligent curing equipment, CNC machining center, and so on, produce in strict accordance with international, industrial and customer standards, and provide special solutions for customers.

OURSOLID major products: high-load self-lubricating bearing, sliding plates, cylinders special composite tubes, etc., and main bearing widely used for New energy, Engineering machinery, construction machinery, medical machinery, packaging machinery, food machinery, ship machinery, aerospace fields, electrician and electrical field.

OURSOLID major customers: Institute of Plasma Physics, Chinese Academy of Sciences, Huazhong university of science and technology, Liugong machinery, saint-gobain, Morgan, GE, Japan's Mitsubishi, Japan high voltage electric, Siemens and other international well-known companies. We have provided services for over 30 countries and more than 100 enterprises ,they are from China, America, Europe, Japan, South Korea, Argentina, India, Taiwan, and other countries and regions.

We warmly welcome your cooperation, and are willing to provide solutions of special fields for you! OURSOLID history will be continuously promote and lead the world history of self-lubricating bearing change and go on!



- 02/ 企业简介
Enterprise Profile
- 04/ B 系列纤维缠绕轴承
B Series Filament-wound Bearings
- 06/ B-01J 向心关节轴承
B-01J Serials Knuckle Joint Bearings
- 07/ 向心关节轴承规格表
Serials knuckle joint bearings specification table
- 10/ B-01T 半球推力轴承
B-01T Hemispherical thrust bearing
- 11/ 半球推力轴承规格表
Hemispherical thrust bearing Specification Table
- 12/ B-32 更高承载缠绕轴承
B-32 Higher Load Bearings
- 13/ B-31 更高承载缠绕轴承
B-31 Higher Load Bearings
- 14/ B-21 高承载缠绕轴承
B-21 High Load Bearings
- 15/ B-06 标准型缠绕轴承
B-06 Standard Type Bearings
- 16/ B-01 经济型缠绕轴承
B-01 Economic Bearings
- 17/ k 系列高承载自润滑滑块
K Serials High load self-lubricating Sliders
- 19/ k 系列高承载自润滑滑块
K Serials High load self-lubricating Sliders
- 20/ 杆端关节轴承规格表
Rod end bearing Specification Table
- 21/ 纤维缠绕轴承化学抗性表
Chemical Resistance
- 23/ 纤维缠绕轴承尺寸表（壁厚 2.5mm）
Bearings Size Table (Wall 2.5mm)
- 24/ 纤维缠绕轴承尺寸表（壁厚 5mm） Bearings Size Table (Wall 5mm)

B Series Filament-Wound Bearings

B 系列纤维缠绕轴承

轴承摩擦系数 Friction Coefficient

缠绕轴承的摩擦系数为 0.03~0.12，影响摩擦系数的主要因素有承载、运动方式、速度以及相配的表面粗糙度等。

图 1 显示了缠绕轴承在 PV 旋转荷下的摩擦系数随着载荷的升高而降低。

Friction Coefficient of filament Bearings is 0.03~0.12. The main factors affect the Friction Coefficient are Load, Moving method, Speed and Roughness of mating surfaces. Figure 1 shows the friction coefficient is going down while load is increasing under the rotation method.

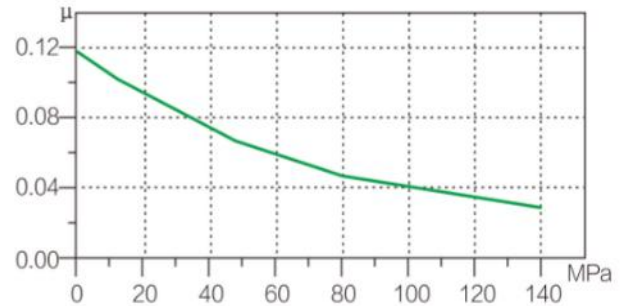


图1：纤维缠绕轴承的载荷与摩擦系数曲线
Graph 1: Load vs Friction Coefficient

轴承规格: B-21-4050-40	Specification: B21-4050-40
轴: 45#HRC50, Ra=0.4	Shaft: 45#HRC50, Ra=0.4
轴承载荷: 20~140MPa	Load: 20~140MPa
速度: 1.0m/min	Speed: 1.0m/min
润滑: 干	Lubricate: Dry

轴承的磨损 The Anti-wear property

轴承磨损的影响因素有承载、运动方式、速度以及相配轴的表面粗糙度等；图 2 说明了缠绕轴承在 50MPa 载荷、室温的条件下摇摆运动中的磨损情况。根据图表中我们可以看出在最初的时间内轴承磨损很快，在这段时间内，内衬中的润滑物质逐步向相配轴上转移并均匀分布在运动方向上，从而行程光滑的摩擦表面，之后保持很长时间的稳定不磨损阶段。

The main factors affect the anti-wear property are the Load, moving method, speed and roughness of mating Surfaces. Figure 2 shows the bearing wear off under Room temperature with the load of 50MPa when the Bearing is swinging. It is found the wear off increases Sharply during the initial running-in while the lubricant Is transferred from the inner liner and a smooth surface Is Created there of to Form the lubricating Surface. After running-in Period, it will maintain Stable without wear off.

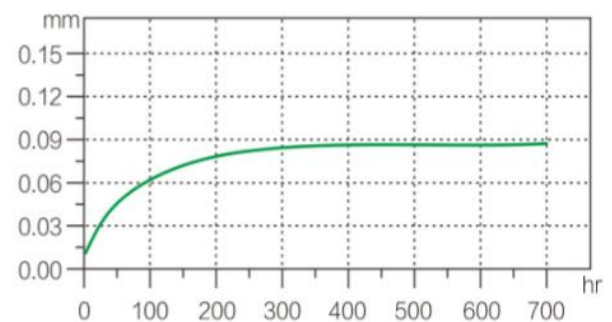
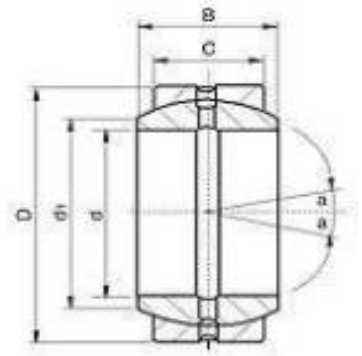


图2：纤维缠绕轴承工作时间与磨损量的曲线
Graph 2: Duration vs Wear off amount

轴承规格: B-21-3040-40	Specification: B-21-3040-40
轴: 45#HRC50, Ra=0.4	Shaft: 45#HRC50, Ra=0.4
轴承载荷: 50MPa	Load: 50MPa
速度: 1.0m/min, ±45°	Speed: 1.0m/min, ±45°
润滑: 干	Lubricate: Dry

B-01J Serials Knuckle Joint Bearings

B-01J 向心关节轴承



■ 轴承材料结构

内衬：以耐磨纤维与特种高强纤维缠绕而成的织物作为滑动层
外衬：以高强度玻璃纤维增强高温高强环氧树脂作为承载层。

■ Material structure

Lubricate layer: Continuous wound wearable and high-strength fibers encapsulated in an internally lubricated, high temperature filled epoxy resin.
Backing: Continuous wound glass fiber encapsulated in a high temperature epoxy resin.

■ 典型特征

高载
低速
耐磨
耐腐蚀
干运行
轻量化
环保



■ Feature

High load
Low speed
Wear-resisting
Light weight
Corrosion resistance
Dry operation
Environmental protection

轴承技术数据 Technical Data

项目 Designation		单位 Unit	数据 Data
最大荷载 Max. Load	静荷载 Static load	MPa	150
	动荷载 Dynamic load	MPa	30
最大滑动线速度 Max. speed		m/Min	0.2
极限 PV 值 Max. PV		MPa*m/s	1.6
摩擦系数 Coefficient of friction		-	0.08-0.18
连续工作温度 Working Temp		°C	±150

典型应用 Typical Application

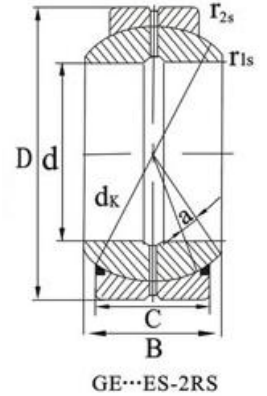
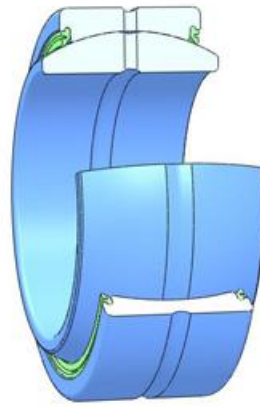
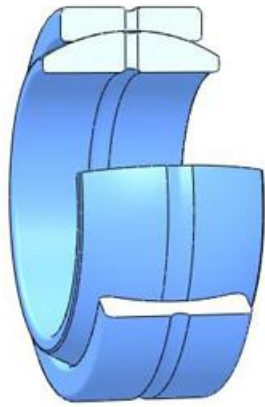
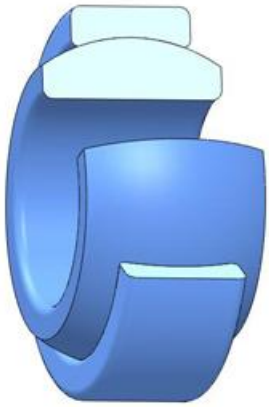
低速重载设备：Low-speed and heavy-duty equipment (干运行, Dry work condition)

高速重载设备：High-speed and heavy-duty equipment (油或水运行, Oil or Water work condition)

港口机械 **Port machinery** 起重机械 **Lifting machinery** 包装机械 **Package machinery**
水利机械 **Hydraulic machinery** 建筑机械 **Construction machinery**

Serials knuckle joint bearings specification table

向心关节轴承规格表



轴承型号 Bearings number	尺寸 Dimensions (mm)										额定负荷 Load ratings (KN)	
	d	D	B	B ¹	C	d ₁ min	d _k	r _s min	r _{1s} min	a' ≈	动 Dynamic C	静 Static Co
B-01J-GE4	4	12	5	6	3	7	8	0.3	0.3	16	3	10
B-01J-GE5	5	14	6	7	4	9	10	0.3	0.3	13	4	17
B-01J-GE6	6	14	6	6	4	11	10	0.3	0.3	13	4	17
B-01J-GE8	8	16	8	6	5	13	13	0.3	0.3	15	6	27
B-01J-GE10	10	19	9	7	6	15	16	0.3	0.3	12	9	40
B-01J-GE12	12	22	10	8	7	17	18	0.3	0.3	10	10	53
B-01J-GE15	15	26	12	8	9	18	22	0.3	0.3	8	16	84
B-01J-GE17	17	30	14	8	10	20	25	0.3	0.3	10	21	106
B-01J-GE20	20	35	16	10	12	24	29	0.3	0.3	9	30	146
B-01J-GE25	25	42	20	9	16	29	35.5	0.6	0.6	7	48	240
B-01J-GE30	30	47	22	7	18	34	40.7	0.6	0.6	6	62	310
B-01J-GE35	35	55	25	6	20	39	47	0.6	1	6	80	399
B-01J-GE40	40	62	28	6	22	45	53	0.6	1	7	100	495
B-01J-GE45	45	68	32	7	25	50	60	0.6	1	7	127	637
B-01J-GE50	50	75	35	7	28	55	66	0.6	1	6	156	780
B-01J-GE55	55	85	40	6	32	60	74	0.6	1	7	200	1000
B-01J-GE60	60	90	44	6	36	66	80	1	1	6	245	1220
B-01J-GE70	70	105	49	6	40	77	92	1	1	6	313	1560
B-01J-GE80	80	120	55	6	45	88	105	1	1	6	400	2000
B-01J-GE90	90	130	60	6	50	98	115	1	1	5	490	2440
B-01J-GE100	100	150	70	5	55	109	130	1	1	7	610	3030
B-01J-GE110	110	160	70	7	55	120	140	1	1	6	655	3270
B-01J-GE120	120	180	85	6	70	130	160	1	1	6	950	4750

MORE...

Serials knuckle joint bearings specification table

向心关节轴承规格表

B-01J-GE160	160	230	105	7	80	170	200	1	1	8	1370	6800
B-01J-GE180	180	260	105	8	80	192	225	1.1	1.1	6	1530	7650
B-01J-GE200	200	290	130	6	100	212	250	1.1	1.1	7	2120	10600
B-01J-GE220	220	320	135	7	100	238	275	1.1	1.1	8	2320	11600
B-01J-GE240	240	340	140	8	100	265	300	1.1	1.1	8	2550	12700
B-01J-GE260	260	370	150	8	110	285	325	1.1	1.1	7	3050	15190
B-01J-GE280	280	400	160	7	120	305	350	1.1	1.1	6	3370	17850
B-01J-GE300	300	430	170	7	120	325	375	1.1	1.1	7	3530	19100
B-01J-GE320	320	460	180	8	120	345	400	1.2	1.2	7	4120	23800
B-01J-GE340	340	490	190	8	130	365	425	1.2	1.2	8	4320	26700
B-01J-GE360	360	530	200	8	130	385	450	1.2	1.2	8	4550	33360
B-01J-GE380	380	570	210	9	140	405	475	1.2	1.2	7	5050	36800
B-01J-GE400	400	610	230	9	140	425	500	1.2	1.2	8	5540	40230

More... Standard or Non Standard

轴承型号 Bearings number	尺寸 Dimensions (mm)										额定负荷 Load ratings (KN)	
	d	D	B	B ¹	C	d ₁ min	d _k	r _s min	r _{1s} min	a [*] ≈	动 Dynamic C	静 Static Co
B-01J-GE15-2RS	15	26	12	8	9	18	22	0.3	0.3	8	16	84
B-01J-GE17-2RS	17	30	14	8	10	20	25	0.3	0.3	10	21	106
B-01J-GE20-2RS	20	35	16	10	12	24	29	0.3	0.3	9	30	146
B-01J-GE25-2RS	25	42	20	9	16	29	35.5	0.6	0.6	7	48	240
B-01J-GE30-2RS	30	47	22	7	18	34	40.7	0.6	0.6	6	62	310
B-01J-GE35-2RS	35	55	25	6	20	39	47	0.6	1	6	80	399
B-01J-GE40-2RS	40	62	28	6	22	45	53	0.6	1	7	100	495
B-01J-GE45-2RS	45	68	32	7	25	50	60	0.6	1	7	127	637
B-01J-GE50-2RS	50	75	35	7	28	55	66	0.6	1	6	156	780
B-01J-GE55-2RS	55	85	40	6	32	60	74	0.6	1	7	200	1000
B-01J-GE60-2RS	60	90	44	6	36	66	80	1	1	6	245	1220
B-01J-GE70-2RS	70	105	49	6	40	77	92	1	1	6	313	1560
B-01J-GE80-2RS	80	120	55	6	45	88	105	1	1	6	400	2000
B-01J-GE90-2RS	90	130	60	6	50	98	115	1	1	5	490	2440
B-01J-GE100-2RS	100	150	70	5	55	109	130	1	1	7	610	3030

B-01J-GE110-2RS	110	160	70	7	55	120	140	1	1	6	655	3270
B-01J-GE120-2RS	120	180	85	6	70	130	160	1	1	6	950	4750
B-01J-GE140-2RS	140	210	90	6	70	150	180	1	1	7	1080	5350
B-01J-GE160-2RS	160	230	105	7	80	170	200	1	1	8	1370	6800
B-01J-GE180-2RS	180	260	105	8	80	192	225	1.1	1.1	6	1530	7650
B-01J-GE200-2RS	200	290	130	6	100	212	250	1.1	1.1	7	2120	10600
B-01J-GE220-2RS	220	320	135	7	100	238	275	1.1	1.1	8	2320	11600
B-01J-GE240-2RS	240	340	140	8	100	265	300	1.1	1.1	8	2550	12700
B-01J-GE260-2RS	260	370	150	8	110	285	325	1.1	1.1	7	3050	15190
B-01J-GE280-2RS	280	390	160	7	120	305	350	1.1	1.1	6	3370	17850
B-01J-GE300-2RS	300	420	170	7	120	325	375	1.1	1.1	7	3530	19100
B-01J-GE320-2RS	320	450	180	8	120	345	400	1.2	1.2	7	4120	23800
B-01J-GE340-2RS	340	480	190	8	130	365	425	1.2	1.2	8	4320	26700
B-01J-GE360-2RS	360	510	200	8	130	385	450	1.2	1.2	8	4550	33360
B-01J-GE380-2RS	380	530	210	9	140	405	475	1.2	1.2	7	5050	36800

More... Standard or Non Standard

外圈有一道轴向缝

Outer ring with single split in axial direction

ES 型内、外圈有润滑油槽、油孔

Lubrication grooves and holes in the outer and inner rings of type ES

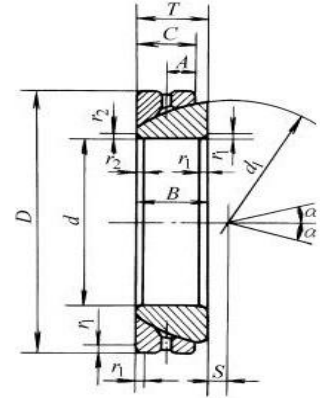
-2RS 型两面带密封圈

Outer ring of type -2RS with two seals

Kind Remind: Because our bearings can be used dry or water or oil work condition , so without any ES AND 2RS style design , simple design is right and better . Trouble design is bad and more cost .

B-01T Hempherical thrust bearing

B-01T 半球推力轴承



■ 轴承材料结构

内衬：以耐磨纤维与特种高强纤维缠绕而成的织物作为滑动层
外衬：以高强度玻璃纤维增强高温高强环氧树脂作为承载层

■ Material structure

Lubricate layer: Continuous wound wearable and high-strength fibers encapsulated in an internally lubricated, high temperature filled epoxy resin.
Backing: Continuous wound glass fiber encapsulated in a high temperature epoxy resin.

■ 典型特征

高载
低速
耐磨
耐腐蚀
干运行
轻量化
环保



■ Feature

High load
Low speed
Wear-resisting
Light weight
Corrosion resistance
Dry operation
Environmental protection

轴承技术数据 Technical Data

项目 Designation		单位 Unit	数据 Data
最大荷载 Max. Load	静荷载 Static load	MPa	150
	动荷载 Dynamic load	MPa	30
最大滑动线速度 Max. speed		m/Min	0.2
极限 PV 值 Max. PV		MPa*m/s	1.6
摩擦系数 Coefficient of friction (干 Dry)		-	0.08-0.18
连续工作温度 Working Temp		°C	±150

典型应用 Typical Application

港口机械 **Port machinery**

起重机械 **Lifting machinery**

包装机械 **Package machinery**

低速重载设备：**Low-speed and heavy-duty equipment** (干运行, **Dry work condition**)

高速重载设备：**High-speed and heavy-duty equipment** (油或水运行, **Oil or Water work condition**)

B-01T Hemispherical thrust bearing Specification Table

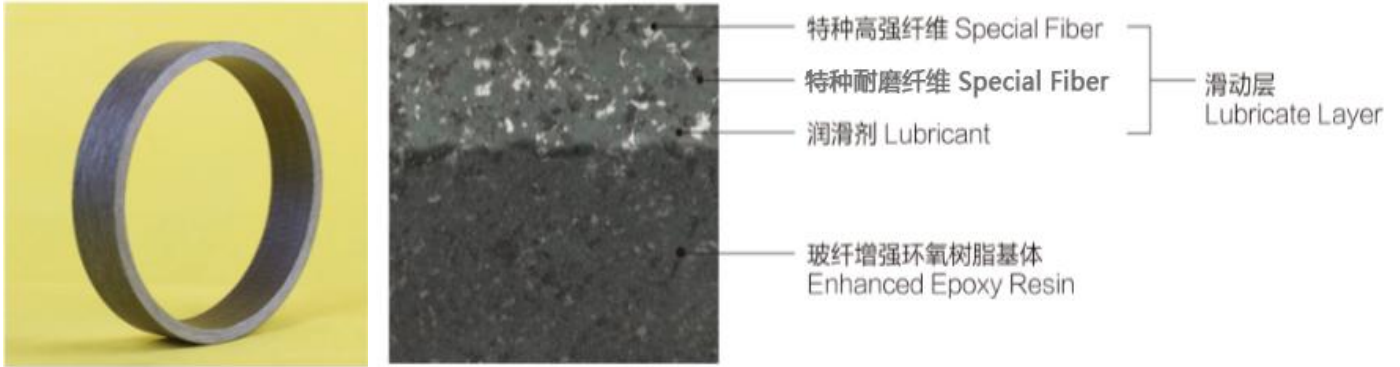
半球推力轴承规格表

轴承型号 Bearing number	外形尺寸 Dimensions										额定载荷 Load ratings (kN)	
	d	D	B	C	H	dk	S	d1 max	d2	D1 min	动荷载 Dynamic	静荷载 Static
B-01T-GAC10S/K	10	30	7.5	7	9.5	32	7	27.5		15.5	45	120
B-01T-GAC20S/K	20	55	14.5	13.8	20	60	12.5	50		31	150	380
B-01T-GAC25S/K	25	62	16.5	16.7	22.5	68	14	58.5		34.5	245	600
B-01T-GAC30S/K	30	75	19	19	26	82	17.5	70		42	335	820
B-01T-GAC35S/K	35	90	22	20.7	28	98	22	84		50.5	490	1200
B-01T-GAC40S/K	40	105	27	21.5	32	114	24.5	97		59	675	1640
B-01T-GAC45S/K	45	120	31	25.5	36.5	128	27.5	110		67	915	2240
B-01T-GAC50S/K	50	130	33	30.5	42.5	139	30	120		70	1040	2550
B-01T-GAC60S/K	60	150	37	34	45	160	35	140		84	1360	3470
B-01T-GAC70S/K	70	160	42	36.5	50	176	35	153		94.5	1640	4180
B-01T-GAC80S/K	80	180	43.5	38	50	197	42.5	172		107.5	2030	5180
B-01T-GAC100S/K	100	210	51	46	59	222	45	198		127	2230	5940
B-01T-GAC120S/K	120	230	53.5	50	64	250	52.5	220		145	2610	6960
B-01T-GAC140S/K	140	260	61	54	72	274	52.5	243		177	3120	8300
B-01T-GAC160S/K	160	290	66	58	77	313	65	271		200	3380	9560
B-01T-GAC180S/K	180	320	74	62	86	340	67.5	299		225	3910	11050
B-01T-GAC200S/K	200	340	80	66	87	365	70	320		247	4950	13990
B-01T-GAC220S/K	220	370	82	67	97	388	75	350	289	265	4640	13110
B-01T-GAC240S/K	240	400	87	73	103	420	77.5	382	314	294	5500	15560
B-01T-GAC260S/K	260	430	95	80	115	449	82.5	409	336	317	6190	17510
B-01T-GAC280S/K	280	460	100	85	110	480	80	445	366	337	8280	23400
B-01T-GAC300S/K	300	480	100	90	110	490	80	460	388	356	9010	25480
B-01T-GAC320S/K	320	520	105	91	116	540	95	500	405	380	11360	33260
B-01T-GAC340S/K	340	540	105	91	116	550	95	510	432	380	11570	33880
B-01T-GAC360S/K	360	560	115	95	125	575	95	535	452	400	12850	37630
B-01T-GAC380S/K	380	580	125	95	130	590	110	550	472	420	13150	39820
B-01T-GAC400S/K	400	600	135	100	130	590	110	550	490	440	13420	43560
B-01T-GAC420S/K	420	620	145	100	145	615	125	575	515	460	14560	46340
B-01T-GAC440S/K	440	640	155	105	145	615	125	575	530	480	14980	51230

More... Standard or Non Standard

B-32 Higher Load Bearings

B-32 更高承载缠绕轴承



■ 轴承材料结构

内衬：以特种高强耐磨纤维缠绕而成的织物作为滑动层

外衬：以高强度玻璃纤维增强高温高强环氧树脂作为承载层。

■ Material structure

Lubricate layer: special high-strength and hard-wearing fibers

encapsulated in an internally lubricated, high temperature filled epoxy resin.

Backing: Continuous wound glass fiber encapsulated in a high temperature epoxy resin.

■ 典型特征

- 极高的动承载能力
- 很好的抗冲击性能
- 极好的耐摩擦特性
- 较强的耐腐蚀能力
- 较低的摩擦系数



■ Feature

- Very high load capacity
- Excellent impact resistance
- Nice chemical resistance
- Low friction and good anti-wear properties

轴承技术数据 Technical Data

项目 Designation	单位 Unit	数据 Data
最大荷载 Max. Load	静荷载 Static load	MPa 485
	动荷载 Dynamic load	MPa 210
最大滑动线速度 Max. speed	m/Min	0.20-0.50
极限 PV 值 Max. PV	MPa*m/s	2.5
摩擦系数 Coefficient of friction	-	0.03-0.12
连续工作温度 Working Temp	°C	±196

典型应用 Typical Application

港口机械 **Port machinery**

智能装备 **Intelligent Equipment**

包装机械 **Package machinery**

水利机械 **Hydraulic machinery**

起重机械 **Lifting machinery**

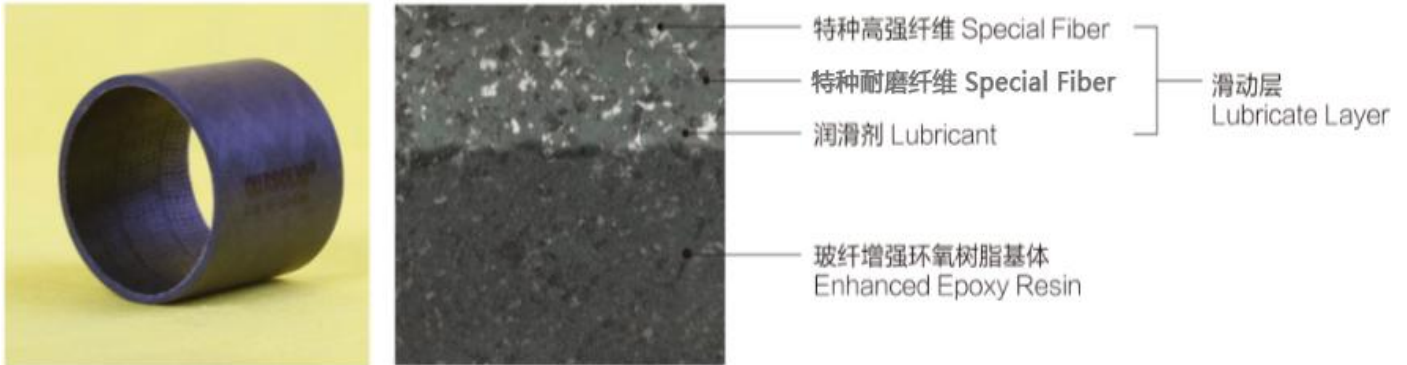
建筑机械 **Construction machinery**

低速重载设备：**low-speed and heavy-duty equipment**（干运行，**Dry work condition**）

高速重载设备：**high-speed and heavy-duty equipment**（油或水运行，**oil or water work condition**）

B-31 Higher Load Bearings

B-31 更高承载缠绕轴承



■ 轴承材料结构

内衬：以特种高强耐磨纤维缠绕而成的织物作为滑动层
 外衬：以高强度玻璃纤维增强高温高强环氧树脂作为承载层。

■ 典型特征

- 极高的动承载能力
- 很好的抗冲击性能
- 极好的耐摩擦特性
- 较强的耐腐蚀能力
- 较低的摩擦系数



■ Material structure

Lubricate layer: special high-strength and hard-wearing fibers encapsulated in an internally lubricated, high temperature filled epoxy resin.
Backing: Continuous wound glass fiber encapsulated in a high temperature epoxy resin.

■ Feature

- Very high load capacity
- Excellent impact resistance
- Nice chemical resistance
- Low friction and good anti-wear properties

轴承技术数据 Technical Data

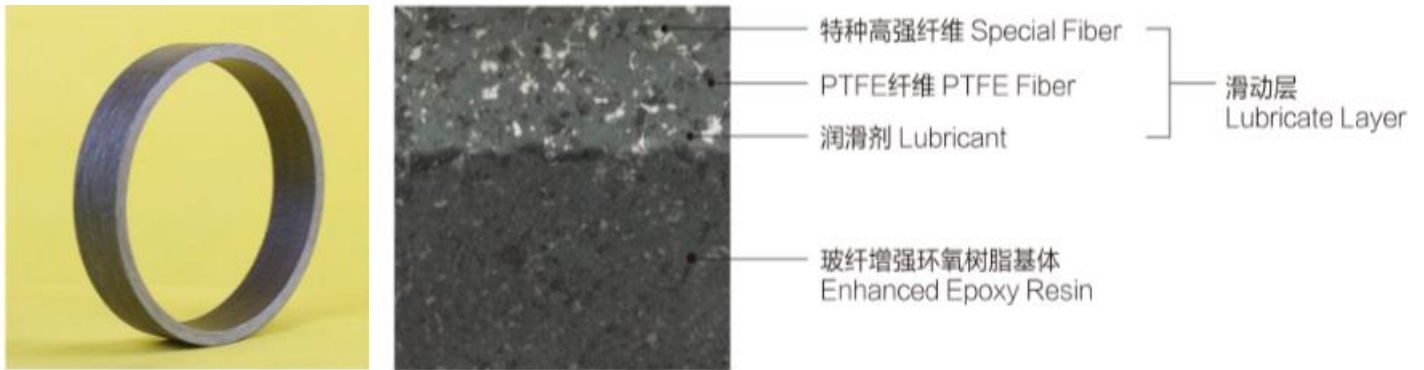
项目 Designation		单位 Unit	数据 Data
最大荷载 Max. Load	静荷载 Static load	MPa	465
	动荷载 Dynamic load	MPa	190
最大滑动线速度 Max. speed		m/Min	0.20-0.50
极限 PV 值 Max. PV		MPa*m/s	2.2
摩擦系数 Coefficient of friction		-	0.03-0.12
连续工作温度 Working Temp		℃	±196

典型应用 Typical Application

- 港口机械 **Port machinery**
- 起重机械 **Lifting machinery**
- 包装机械 **Package machinery**
- 水利机械 **Hydraulic machinery**
- 建筑机械 **Construction machinery**
- 智能装备 **Intelligent Equipment**
- 低速重载设备：**low-speed and heavy-duty equipment**

B-21 High Load Bearings

B-21 高承载缠绕轴承



■ 轴承材料结构

内衬：以 PTFE 纤维与特种高强纤维缠绕而成的织物作为滑动层
外衬：以高强度玻璃纤维增强高温高强环氧树脂作为承载层。

■ 典型特征

- 较高的动承载能力
- 很好的抗冲击性能
- 极好的耐摩擦特性
- 较强的耐腐蚀能力
- 较低的摩擦系数



■ Material structure

Lubricate layer: Continuous wound PTFE and high-strength fibers encapsulated in an internally lubricated, high temperature filled epoxy resin.

Backing: Continuous wound glass fiber encapsulated in a high temperature epoxy resin.

■ Feature

- Very high load capacity
- Excellent impact resistance
- Nice chemical resistance
- Low friction and good anti-wear properties

轴承技术数据 Technical Data

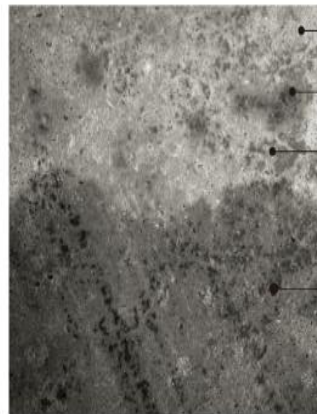
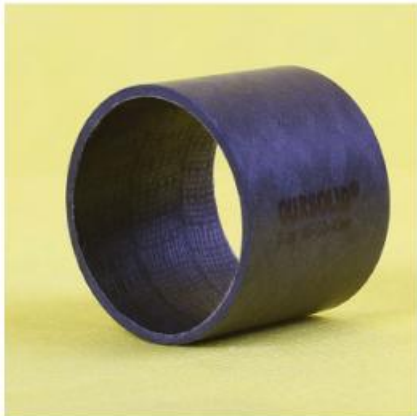
项目 Designation		单位 Unit	数据 Data
最大荷载 Max. Load	静荷载 Static load	MPa	240
	动荷载 Dynamic load	MPa	160
最大滑动线速度 Max. speed		m/Min	0.20
极限 PV 值 Max. PV		MPa*m/s	2.0
摩擦系数 Coefficient of friction		-	0.03-0.12
连续工作温度 Working Temp		°C	±180

典型应用 Typical Application

- 港口机械 **Port machinery**
- 起重机械 **Lifting machinery**
- 包装机械 **Package machinery**
- 水利机械 **Hydraulic machinery**
- 建筑机械 **Construction machinery**
- 低速重载设备：**low-speed and heavy-duty equipment**

B-06 Standard Type Bearings

B-06 标准型缠绕轴承



中等强度纤维 Medium Strength Fiber
 PTFE纤维 PTFE Fiber
 润滑剂 Lubricant
 玻纤增强环氧树脂基体 Enhanced Epoxy Resin

滑动层 Lubricate Layer

■ 轴承材料结构

内衬：以 PTFE 纤维与特种高强纤维缠绕而成的织物作为滑动层
 外衬：以高强度玻璃纤维增强高温高强环氧树脂作为承载层。

■ 典型特征

中高的动承载能力
 很好的抗冲击性能
 较好的耐摩擦特性
 较强的耐腐蚀能力
 较低的摩擦系数



■ Material structure

Lubricate layer: Continuous wound PTFE and high-strength fibers encapsulated in an internally lubricated, high temperature filled epoxy resin.

Backing: Continuous wound glass fiber encapsulated in a high temperature epoxy resin.

■ Feature

Medium to high load capacity
 Good impact resistance
 Nice chemical resistance
 Low friction and good anti-wear properties

轴承技术数据 Technical Data

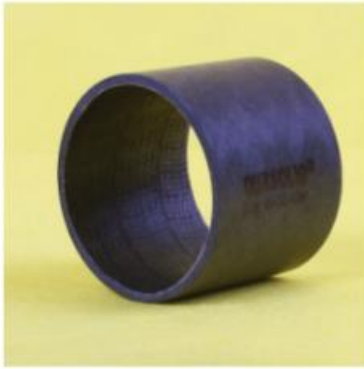
项目 Designation	单位 Unit	数据 Data
最大静荷载 Max. Load	MPa	240
最大动荷载 Max. Load	MPa	150
最大滑动线速度 Max. speed	m/Min	0.20
极限 PV 值 Max. PV	MPa*m/s	2.0
摩擦系数 Coefficient of friction	-	0.03-0.12
连续工作温度 Working Temp	℃	±180

典型应用 Typical Application

港口机械 **Port machinery**
 建筑机械 **Construction machinery**
 起重机械 **Lifting machinery**
 包装机械 **Package machinery**
 水利机械 **Hydraulic machinery**

B-01 Economic Bearings

B-01 经济型缠绕轴承



特种高强酚醛树脂 Special Phenolic Resin
高强度纤维 Strength Fiber Textile
专用润滑剂 Special Lubricant

滑动层 Lubricate Layer

■ 材料结构

B-01 轴承是采用线性酚醛树脂和优质棉纤维浸渍缠绕为基体，并填充适量的耐磨剂

■ Material structure

This bearing material consist of fine woven cotton fabric reinforced phenolic composites

■ 典型特征

较低的动承载能力
一般耐摩擦特性
较高的摩擦系数
适用于油润滑工况
内外径可加工

■ Feature

Relatively low load capacity
Relatively high friction
Suitable for oil lubricating applications
Average anti wear feature
Completely machinable

轴承技术数据 Technical Data

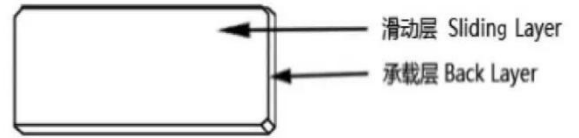
项目 Designation		单位 Unit	数据 Data
最大荷载 Max. Load	静荷载 Static load	MPa	150
	动荷载 Dynamic load	MPa	30
最大滑动线速度 Max. speed		m/Min	0.10
极限 PV 值 Max. PV		MPa*m/s	1.6
摩擦系数 Coefficient of friction		-	0.15-0.25
连续工作温度 Working Temp		°C	±150

典型应用 Typical Application

港口机械 : **Port machinery**
包装机械 **Package machinery**
起重机械 : **Lifting machinery**
智能装备 **Intelligent Equipment**
水利机械 **Hydraulic machinery**
建筑机械 **Construction machinery**

K Serials of High load Self-lubricating Sliders

K 系列高承载自润滑滑块



■ 滑块材料结构

耐磨层：以特种耐磨纤维与特种高强纤维编织而成的织物作为滑动层
 承载层：以高强度纤维增强高温高强环氧树脂作为承载层。

■ Material structure

Lubricate layer: knited PTFE fiber and high-strength fibers encapsulated in an internally lubricated, high temperature filled epoxy resin.
Backing layer: Laminated fiber encapsulated in a high temperature epoxy resin.

滑块技术数据 Technical Data

项目 Designation		单位 Unit	数据 Data
最大荷载 Max. Load	静荷载 Static load	MPa	550
	动荷载 Dynamic load	MPa	350
最大滑动线速度 Max. speed (干 Dry)		m/Min	0.5
极限 PV 值 Max. PV		MPa*m/s	2.0
摩擦系数 Coefficient of friction		-	0.03-0.12
连续工作温度 Working Temperature		°C	+150/-196

滑块规格表

B-***K(NEW)	B-32K	B-31K	B-21K	B-06K
-------------	-------	-------	-------	-------

典型应用 Typical Application

- 港口机械 **Port machinery**
- 起重机械 **Lifting machinery**
- 包装机械 **Package machinery**
- 水利机械 **Hydraulic machinery**
- 建筑机械 **Construction machinery**
- 智能装备 **Intelligent Equipment**

低速重载设备：**low-speed and heavy-duty equipment**（干运行，**Dry work condition**）

高速重载设备：**high-speed and heavy-duty equipment**（油或水运行，**oil or water work conditio**）

K Serials of High load Self-lubricating Sliders Specification Table

K 系列高承载自润滑滑块规格表

承载层特性/LOAD LAYER CHARACTER	测试方法	单位	B-32K	B-31K	B-21K	B-06K
	Test method Methode de controle	Unit Unite				
纤维增强 Fibre reinforcement Renfort en fibres de verre	-	-	粗纱 Roving	粗纱 Roving	粗纱 Roving	粗纱 Roving
比重 Specific gravity Masse volumique	ISO 1183	g/cm ³	2.1	2.1	2.1	2.1
Typ nach EN60893/IEC 893 EN 60893/IEC 893 Selon norme EN 60893/IEC 893	-	-	B-32K	B-31K	B-21K	B-06K
Typ nach Nema-LI.1 Nema-LI.1 designation Selon Nema-LI.1	-	-	G-11	G-11	G-11	G-11
Typ nach NFC 26153/26151 标准.NFC 26153/26151 Standard Selon norme NFC26153/26151	ISO 1183	g/cm ³	VtEM2	VtEM2	VtEM2	VtEM2
抗弯强度（垂直） Bending strength (perpendicular) Contrainte de rupture en flexion (perpendiculaire)	ISO 178	Mpa	600	600	600	600
弹性模量（垂直） Modulus of elasticity (perpendicular) Module d'elasticite apparent en flexion (perpendiculaire)	ISO 178	Mpa	30000	30000	30000	30000
抗压强度（垂直） Compressive strength (perpendicular) Resistance a la compression (perpendiculaire)	ISO 604	Mpa	600	600	600	600
抗冲击强度（平行） Tensile strength (parallel) Resistance au choc (parallele)	ISO 179	kJ/m ²	300	300	300	300
抗伸强度（平行） Tensile strength (parallel) Resistance a la traction(parallele)	ISO 527	Mpa	500	500	500	500
在 90℃时的电气强度（垂直） Electric strength at 90℃ (perpendicular) Rigidite dielectrique a 90℃ (perpendiculaire)	EC 60243	kV/m m	13	13	13	13
在 90℃时的击穿电压（平行） Breakdown voltage at 90℃ (parallel) Tension de claquage 90℃(parallele)	IEC 60243	Kv/25 mm	70	70	70	70
相比耐漏电起痕指数 Comparative tracking index Indice de resistance au cheminement	IEC 60112	CTI	600	600	600	600

K Serials of High load Self-lubricating Sliders Specification Table

K 系列高承载自润滑滑块

导热性 Thermal conductivity Conductivite thermique	ISO 8302	W/mK	0.5	0.5	0.5	0.5
耐热性 Thermal endurance Endurance thermique	IEC 60216	T.I.	180	180	180	180
绝缘等级 Insulating class Classe thermique	IEC 60085	-	H	H	H	H
可燃性 Flammability Inflammabilite	IEC 60707	-	VO/3mm	VO/3mm	VO/3mm	VO/3mm
线性膨胀系数 Coefficient of linear expansion (parallel) Coefficient de dilatation lineaire(parallele)	-	$10^{-6} \cdot K^{-1}$	10-20	10-20	10-20	10-20

典型应用 Typical Application

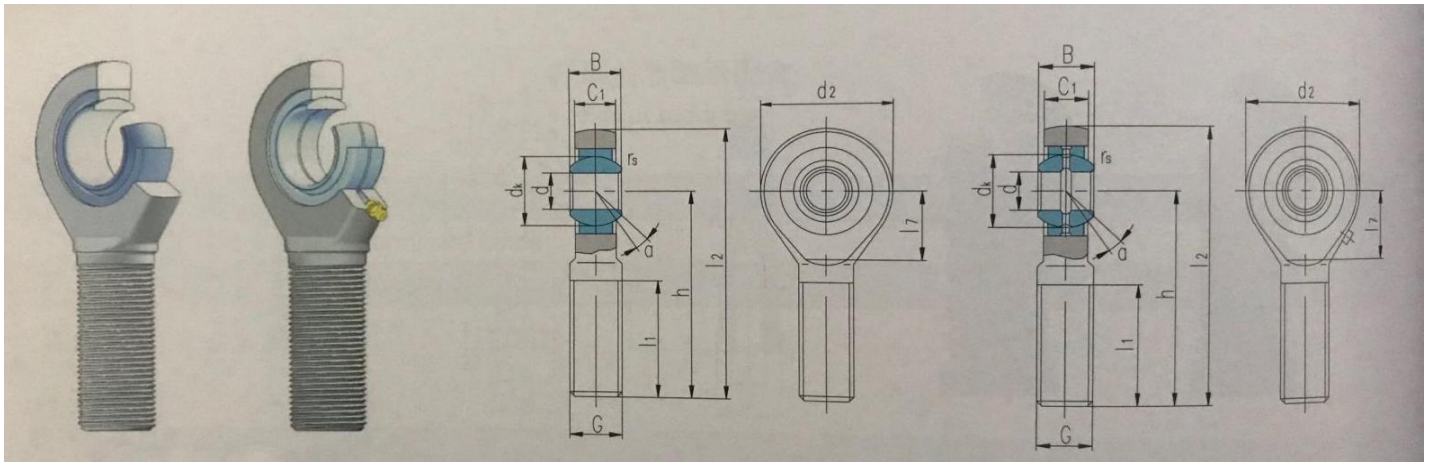
港口机械 **Port machinery**
 起重机械 **Lifting machinery**
 包装机械 **Package machinery**
 水利机械 **Hydraulic machinery**
 建筑机械 **Construction machinery**
 智能装备 **Intelligent Equipment**

低速重载设备：**low-speed and heavy-duty equipment**（干运行，**Dry work condition**）

高速重载设备：**high-speed and heavy-duty equipment**（油或水运行，**oil or water work conditio**

Rod End Bearing Specification Table

杆端关节轴承规格表



轴承型号 Bearings number	尺寸 Dimensions (mm)												额定负荷 Load ratings (KN)	
	d	B	dk	C ₁ max	d ₂	G 6g	h	l ₁ min	l ₂	l ₇	r _s min	a° ≈	动荷载 Dynamic	静荷载 Static
B-01-J-SA5E	5	6	10	4.5	21	M5	36	16	46.5	11.5	0.3	13	3.5	4.0
B-01-J-SA6E	6	6	10	4.5	21	M6	36	16	46.5	11.5	0.3	13	3.5	5.6
B-01-J-SA8E	8	8	13	6.5	24	M8	42	21	54	13	0.3	15	5.6	11
B-01J-SA10E	10	9	16	7.5	29	M10	48	26	62.5	15.5	0.3	12	8.2	17
B-01J-SA12E	12	10	18	8.5	34	M12	54	28	71	18	0.3	10	11	24
B-01J-SA15ES	15	12	22	10.5	40	M14	63	34	83	21	0.3	8	17	33
B-01J-SA17ES	17	14	25	11.5	46	M16	69	36	92	24	0.3	10	22	45
B-01J-SA20ES	20	16	29	13.5	53	M20×1.5	78	43	104.5	25.5	0.3	9	31	62
B-01J-SA25ES	25	20	35.5	18	64	M24×2	94	53	126	31	0.6	7	50	85
B-01J-SA30ES	30	22	40.7	20	73	M30×2	110	65	146.5	35.5	0.6	6	65	120
B-01J-SA35ES	35	25	47	22	82	M36×3	140	82	181	41	0.6	6	80	150
B-01J-SA40ES	40	28	53	24	92	M39×3	150	86	196	47	0.6	7	100	190
B-01J-SAS40ES	40	28	53	23	92	M42×3	145	86	191	47	0.6	7	100	190
B-01J-SA45ES	45	32	60	28	102	M42×3	163	92	214	52	0.6	7	130	245
B-01J-SAS45ES	45	32	60	27	102	M45×3	165	95	216	52	0.6	7	130	245
B-01J-SA50ES	50	35	66	31	112	M45×3	185	104	241	60	0.6	6	160	295
B-01J-SAS50ES	50	35	66	30	112	M52×3	195	110	251	60	0.6	6	156	295
B-01J-SA60ES	60	44	80	39	135	M52×3	210	115	277.5	75.5	1.0	6	248	460
B-01J-SAS60ES	60	44	80	38	135	M60×4	225	120	292.5	75.5	1.0	6	248	460
B-01J-SA70ES	70	49	92	43	160	M56×4	235	125	315	95	1.0	6	315	615
B-01J-SAS70ES	70	59	92	42	160	M72×4	265	132	345	95	1.0	6	315	615
B-01J-SA80ES	80	55	105	48	180	M64×4	270	140	360	105.5	1.0	6	410	760
B-01J-SAS80ES	80	55	105	47	180	M80×4	295	147	385	105.5	1.0	6	410	760

可提供不同螺距或螺纹精度有特殊要求的杆端关节轴承

Can supply other rod end bearing with different pitch or accuracy of thread

Chemical Resistance

纤维缠绕轴承化学抗性表

化学名 Chem	B-32	B-31	B-21	B-06	B-03	B-01
醋酸 10% Acetic Acid%	●	●	●	●	●	●
砷 10% Arsenic 10%	●	●	●	●	●	●
硼酸 10% Boric 10%	●	●	●	●	●	●
碳 10% Carbonic 10%	●	●	●	●	●	●
柠檬酸 10% Citric 10%	●	●	●	●	●	●
盐酸 10% Hydrochloric 10%	●	●	●	●	●	●
水电氟 10% Hydro-fluoric 10%	●	●	●	●	●	●
硝酸 10% Nitric 10%	●	●	●	●	●	●
硫酸 10% Sulfuric 10%	●	●	●	●	●	●
铝 10% Aluminum 10%	●	●	●	●	●	●
钙 10% Calcium 10%	●	●	●	●	●	●
镁 10% Magnesium 10%	●	●	●	●	●	●
氢氧化钾 10% Potassium Hydroxide 10%	●	●	●	●	●	●
氢氧化钠 10% Sodium Hydroxide 10%	●	●	●	●	●	●
三氯化铝 Aluminum Chloride	●	●	●	●	●	●
硝酸铝 Aluminum Nitrate	●	●	●	●	●	●
氯化钙 Calcium Chloride	●	●	●	●	●	●
三氯化铁 Ferric Chloride	●	●	●	●	●	●
碳酸镁 Magnesium Carbonate	●	●	●	●	●	●
氯化镁 Magnesium Chloride	●	●	●	●	●	●
硫酸镁 Magnesium Sulfate	●	●	●	●	●	●
醋酸钠 Acetic Acetate	●	●	●	●	●	●
碳酸氢钠 Sodium Bicarbonate	●	●	●	●	●	●
硫酸氢钠 Sodium Bisulfate	●	●	●	●	●	●
氯化钠 Sodium Chloride	●	●	●	●	●	●
硝酸钠 Sodium Nitrate	●	●	●	●	●	●
硫酸锌 Zinc Sulfate	●	●	●	●	●	●
丙酮醇 Acetol	●	●	●	●	●	●
烯丙基 Allyl	●	●	●	●	●	●
丁基 Butyl	●	●	●	●	●	●
甲酸乙酯 Ethyl	●	●	●	●	●	●
异丁基 Iso Butyl	●	●	●	●	●	●
异丙基 Iso Propyl	●	●	●	●	●	●
甲基 Methyl	●	●	●	●	●	●
丙烷基 Propyl	●	●	●	●	●	●
丙酮 Acetone	●	●	●	●	●	●
苯 Benzene	●	●	●	●	●	●

● 完全抵抗 Resistant

● 没有抵抗 Not Resistant

Chemical Resistance

纤维缠绕轴承化学抗性表

化学名 Chem	B-32	B-31	B-21	B-06	B-01	B01J-GE
四氯化铁 Carbon Tetrachloride	●	●	●	●	●	●
二氯甲烷 Methylene Chloride	●	●	●	●	●	●
甲乙酮 Methyl Ethyl Ketone	●	●	●	●	●	●
石脑油 Naphtha	●	●	●	●	●	●
甲苯 Toluol	●	●	●	●	●	●
三氯乙烷 Trichlorethane	●	●	●	●	●	●
棉籽 Cottonseed	●	●	●	●	●	●
原油 Crude Oil	●	●	●	●	●	●
液压油 Hydraulic Fluids	●	●	●	●	●	●
亚麻籽油 Linseed Oil	●	●	●	●	●	●
机油 Motor Oil	●	●	●	●	●	●
变速油箱 Transmission Fluids	●	●	●	●	●	●
柴油 Diesel	●	●	●	●	●	●
汽油 Gasoline	●	●	●	●	●	●
喷气燃料 Jet Fuel	●	●	●	●	●	●
煤油 Kerosene	●	●	●	●	●	●
乙炔溴 Acetylene Bromine	●	●	●	●	●	●
丁烷 Butane	●	●	●	●	●	●
二氧化碳 Carbon Dioxide	●	●	●	●	●	●
氯 Chlorine	●	●	●	●	●	●
醚 Ethers	●	●	●	●	●	●
氟 Fluorine	●	●	●	●	●	●
氢 Hydrogen	●	●	●	●	●	●
天然气 Natural Gas	●	●	●	●	●	●
氮 Nitrogen	●	●	●	●	●	●
臭氧 Ozone	●	●	●	●	●	●
丙烷 Propane	●	●	●	●	●	●
二氧化硫 Sulfur Dioxide	●	●	●	●	●	●
无水氨 Anhydrous Ammonia	●	●	●	●	●	●
洗涤剂 Datergents	●	●	●	●	●	●
乙二醇 Ethylene Glycol	●	●	●	●	●	●
甲醛 Formaldehyde	●	●	●	●	●	●
氟利昂 Freon	●	●	●	●	●	●
过氧化氢 Hydrogen Peroxide	●	●	●	●	●	●
石灰 Lime	●	●	●	●	●	●
海水 Sea Water	●	●	●	●	●	●
核辐射 Nuclear Radiation	●	●	●	●	●	●

●完全抵抗 Resistant

●没有抵抗 Not Resistant

Bearings Size Table (Wall 2.5mm)

纤维缠绕轴承尺寸表（壁厚 2.5mm）

可供规格 Specifications:

订货型号 Order Spec.

B-21-20 25-30

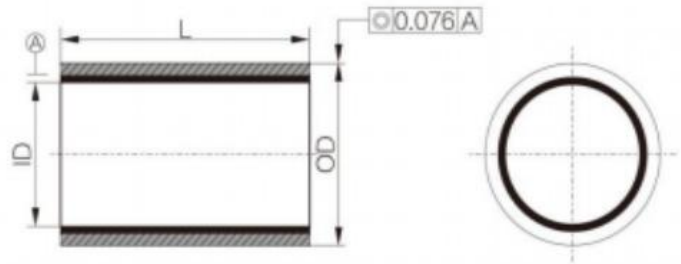
长度 Length

外径 OD

内径 ID

材料 Materials:

B-32, B-31, B-21, B-06, B-03, B-01



长度公差表 Length tolerance table		≤75mm	>75 to <150mm	≥150mm
ID	≤75mm	-0.50mm	-1.00mm	-1.50mm
	>75 to ≤120mm	-1.00mm	-1.00mm	-1.50mm
	>120 to ≤150mm	-1.00mm	-1.50mm	-1.50mm

订货型号 Order Spec.	轴承尺寸 Bearing Size		推荐尺寸 Recommend		装配间隙 Assembly Interference	运行间隙 Running Clearance	参考长度 L Standard Length
	内径 ID	外径 OD	轴 Shaft	孔 Housing			
2025-L	20 ^{+0.196} / _{+0.116}	25 ^{+0.096} / _{+0.046}	20 ⁰ / _{-0.021}	25 ^{+0.021} / ₀	0.025-0.096	0.020-0.192	15、20、30
2227-L	22 ^{+0.196} / _{+0.116}	27 ^{+0.096} / _{+0.046}	22 ⁰ / _{-0.021}	27 ^{+0.021} / ₀	0.025-0.096	0.025-0.192	15、20、30
2530-L	25 ^{+0.196} / _{+0.116}	30 ^{+0.096} / _{+0.046}	25 ⁰ / _{-0.021}	30 ^{+0.021} / ₀	0.025-0.096	0.020-0.192	20、30、40
2833-L	28 ^{+0.200} / _{+0.120}	33 ^{+0.100} / _{+0.050}	28 ⁰ / _{-0.021}	33 ^{+0.025} / ₀	0.025-0.100	0.020-0.196	20、30、40
3035-L	30 ^{+0.200} / _{+0.120}	35 ^{+0.100} / _{+0.050}	30 ⁰ / _{-0.021}	35 ^{+0.025} / ₀	0.025-0.100	0.020-0.196	20、30、40
3540-L	35 ^{+0.200} / _{+0.120}	40 ^{+0.100} / _{+0.050}	35 ⁰ / _{-0.025}	40 ^{+0.025} / ₀	0.025-0.100	0.020-0.200	30、40、50
4045-L	40 ^{+0.200} / _{+0.120}	45 ^{+0.100} / _{+0.050}	40 ⁰ / _{-0.025}	45 ^{+0.025} / ₀	0.025-0.100	0.020-0.200	30、40、60
4550-L	45 ^{+0.230} / _{+0.130}	50 ^{+0.105} / _{+0.055}	45 ⁰ / _{-0.025}	50 ^{+0.025} / ₀	0.025-0.105	0.020-0.230	30、40、60
5055-L	50 ^{+0.230} / _{+0.130}	55 ^{+0.105} / _{+0.055}	50 ⁰ / _{-0.025}	55 ^{+0.030} / ₀	0.025-0.105	0.020-0.230	40、50、60
5560-L	55 ^{+0.245} / _{+0.145}	60 ^{+0.120} / _{+0.070}	55 ⁰ / _{-0.030}	60 ^{+0.030} / ₀	0.040-0.120	0.025-0.235	40、55、70
6065-L	60 ^{+0.245} / _{+0.145}	65 ^{+0.120} / _{+0.070}	60 ⁰ / _{-0.030}	65 ^{+0.030} / ₀	0.040-0.120	0.025-0.235	40、60、80
6570-L	65 ^{+0.245} / _{+0.145}	70 ^{+0.120} / _{+0.070}	65 ⁰ / _{-0.030}	70 ^{+0.030} / ₀	0.040-0.120	0.025-0.235	50、60、80
7075-L	70 ^{+0.245} / _{+0.145}	75 ^{+0.120} / _{+0.070}	70 ⁰ / _{-0.030}	75 ^{+0.030} / ₀	0.040-0.120	0.025-0.235	50、70、90
7580-L	75 ^{+0.275} / _{+0.175}	80 ^{+0.120} / _{+0.070}	75 ⁰ / _{-0.030}	80 ^{+0.030} / ₀	0.040-0.125	0.050-0.265	50、70、90
8085-L	80 ^{+0.275} / _{+0.175}	85 ^{+0.125} / _{+0.075}	80 ⁰ / _{-0.030}	85 ^{+0.035} / ₀	0.040-0.125	0.050-0.265	60、80、100
8590-L	85 ^{+0.275} / _{+0.175}	90 ^{+0.125} / _{+0.075}	85 ⁰ / _{-0.035}	90 ^{+0.035} / ₀	0.040-0.125	0.050-0.270	60、80、100
9095-L	90 ^{+0.275} / _{+0.175}	95 ^{+0.125} / _{+0.075}	90 ⁰ / _{-0.035}	95 ^{+0.035} / ₀	0.050-0.135	0.050-0.270	60、80、120
95100-L	95 ^{+0.310} / _{+0.185}	105 ^{+0.125} / _{+0.075}	95 ⁰ / _{-0.035}	105 ^{+0.035} / ₀	0.050-0.135	0.050-0.270	60、80、120
100105-L	100 ^{+0.310} / _{+0.185}	110 ^{+0.135} / _{+0.085}	100 ⁰ / _{-0.035}	110 ^{+0.035} / ₀	0.050-0.135	0.050-0.295	80、100、120
110115-L	110 ^{+0.315} / _{+0.190}	115 ^{+0.135} / _{+0.085}	110 ⁰ / _{-0.035}	115 ^{+0.035} / ₀	0.050-0.140	0.050-0.300	80、100、120
120125-L	120 ^{+0.340} / _{+0.215}	125 ^{+0.135} / _{+0.085}	120 ⁰ / _{-0.035}	125 ^{+0.040} / ₀	0.050-0.165	0.050-0.325	100、120、150
130135-L	130 ^{+0.340} / _{+0.215}	135 ^{+0.165} / _{+0.090}	130 ⁰ / _{-0.040}	135 ^{+0.040} / ₀	0.050-0.165	0.050-0.330	100、120、150
160165-L	160 ^{+0.340} / _{+0.215}	165 ^{+0.165} / _{+0.090}	160 ⁰ / _{-0.040}	165 ^{+0.040} / ₀	0.050-0.165	0.050-0.330	120、150、180

MORE...

Bearings Size Table (Wall 5mm)

纤维缠绕轴承尺寸表（壁厚 5mm）

可供规格 Specifications:

订货型号 Order Spec.

B-21-20 25-30

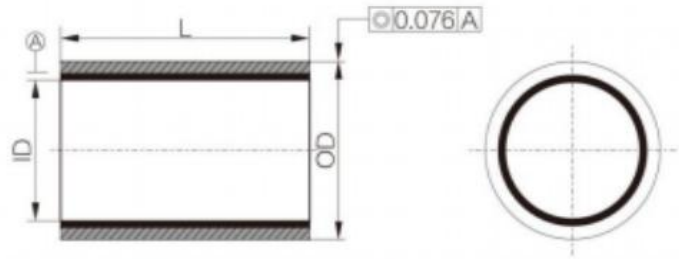
长度 Length

外径 OD

内径 ID

材料 Materials:

B-32,B-31,B-21,B-06,B-03,B-01



长度公差表 Length tolerance table			
	≤75mm	>75 to <150mm	≥150mm
ID	≤75mm	-1.00mm	-1.50mm
	>75 to ≤120mm	-1.00mm	-1.50mm
	>120 to ≤150mm	-1.00mm	-1.50mm

订货型号 Order Spec.	轴承尺寸 Bearing Size		推荐尺寸 Recommend		装配间隙 Assembly Interference	运行间隙 Running Clearance	参考长度 L Standard Length
	内径 ID	外径 OD	轴 Shaft	孔 Housing			
2030-L	20 ^{+0.196} / _{+0.116}	30 ^{+0.096} / _{+0.046}	20 ⁰ / _{-0.021}	30 ^{+0.021} / ₀	0.025-0.096	0.020-0.192	15、20、30
2232-L	22 ^{+0.196} / _{+0.116}	32 ^{+0.096} / _{+0.046}	22 ⁰ / _{-0.021}	32 ^{+0.021} / ₀	0.025-0.096	0.025-0.192	15、20、30
2535-L	25 ^{+0.196} / _{+0.116}	35 ^{+0.096} / _{+0.046}	25 ⁰ / _{-0.021}	35 ^{+0.021} / ₀	0.025-0.096	0.020-0.192	20、30、40
2838-L	28 ^{+0.200} / _{+0.120}	38 ^{+0.100} / _{+0.050}	28 ⁰ / _{-0.021}	38 ^{+0.025} / ₀	0.025-0.100	0.020-0.196	20、30、40
3040-L	30 ^{+0.200} / _{+0.120}	40 ^{+0.100} / _{+0.050}	30 ⁰ / _{-0.021}	40 ^{+0.025} / ₀	0.025-0.100	0.020-0.196	20、30、40
3545-L	35 ^{+0.200} / _{+0.120}	45 ^{+0.100} / _{+0.050}	35 ⁰ / _{-0.025}	45 ^{+0.025} / ₀	0.025-0.100	0.020-0.200	30、40、50
4050-L	40 ^{+0.200} / _{+0.120}	50 ^{+0.100} / _{+0.050}	40 ⁰ / _{-0.025}	50 ^{+0.025} / ₀	0.025-0.100	0.020-0.200	30、40、60
4555-L	45 ^{+0.230} / _{+0.130}	55 ^{+0.105} / _{+0.055}	45 ⁰ / _{-0.025}	55 ^{+0.025} / ₀	0.025-0.105	0.020-0.230	30、40、60
5060-L	50 ^{+0.230} / _{+0.130}	60 ^{+0.105} / _{+0.055}	50 ⁰ / _{-0.025}	60 ^{+0.030} / ₀	0.025-0.105	0.020-0.230	40、50、60
5565-L	55 ^{+0.245} / _{+0.145}	65 ^{+0.120} / _{+0.070}	55 ⁰ / _{-0.030}	65 ^{+0.030} / ₀	0.040-0.120	0.025-0.235	40、55、70
6070-L	60 ^{+0.245} / _{+0.145}	70 ^{+0.120} / _{+0.070}	60 ⁰ / _{-0.030}	70 ^{+0.030} / ₀	0.040-0.120	0.025-0.235	40、60、80
6575-L	65 ^{+0.245} / _{+0.145}	75 ^{+0.120} / _{+0.070}	65 ⁰ / _{-0.030}	75 ^{+0.030} / ₀	0.040-0.120	0.025-0.235	50、60、80
7080-L	70 ^{+0.245} / _{+0.145}	80 ^{+0.120} / _{+0.070}	70 ⁰ / _{-0.030}	80 ^{+0.030} / ₀	0.040-0.120	0.025-0.235	50、70、90
7585-L	75 ^{+0.275} / _{+0.175}	85 ^{+0.120} / _{+0.070}	75 ⁰ / _{-0.030}	85 ^{+0.030} / ₀	0.040-0.125	0.050-0.265	50、70、90
8090-L	80 ^{+0.275} / _{+0.175}	90 ^{+0.125} / _{+0.075}	80 ⁰ / _{-0.030}	90 ^{+0.035} / ₀	0.040-0.125	0.050-0.265	60、80、100
8595-L	85 ^{+0.275} / _{+0.175}	95 ^{+0.125} / _{+0.075}	85 ⁰ / _{-0.035}	95 ^{+0.035} / ₀	0.040-0.125	0.050-0.270	60、80、100
90100-L	90 ^{+0.275} / _{+0.175}	100 ^{+0.125} / _{+0.075}	90 ⁰ / _{-0.035}	100 ^{+0.035} / ₀	0.050-0.135	0.050-0.270	60、80、120
95105-L	95 ^{+0.310} / _{+0.185}	105 ^{+0.125} / _{+0.075}	95 ⁰ / _{-0.035}	105 ^{+0.035} / ₀	0.050-0.135	0.050-0.270	60、80、120
100110-L	100 ^{+0.310} / _{+0.185}	110 ^{+0.135} / _{+0.085}	100 ⁰ / _{-0.035}	110 ^{+0.035} / ₀	0.050-0.135	0.050-0.295	80、100、120
110120-L	110 ^{+0.315} / _{+0.190}	120 ^{+0.135} / _{+0.085}	110 ⁰ / _{-0.035}	120 ^{+0.035} / ₀	0.050-0.140	0.050-0.300	80、100、120
120130-L	120 ^{+0.340} / _{+0.215}	130 ^{+0.135} / _{+0.085}	120 ⁰ / _{-0.035}	130 ^{+0.040} / ₀	0.050-0.165	0.050-0.325	100、120、150
130140-L	130 ^{+0.340} / _{+0.215}	140 ^{+0.165} / _{+0.090}	130 ⁰ / _{-0.040}	140 ^{+0.040} / ₀	0.050-0.165	0.050-0.330	100、120、150
140150-L	140 ^{+0.340} / _{+0.215}	150 ^{+0.165} / _{+0.090}	140 ⁰ / _{-0.040}	150 ^{+0.040} / ₀	0.050-0.165	0.050-0.330	100、150、180
150160-L	150 ^{+0.340} / _{+0.215}	160 ^{+0.165} / _{+0.090}	150 ⁰ / _{-0.040}	160 ^{+0.040} / ₀	0.050-0.165	0.050-0.330	120、150、180

MORE...

OURSOLID®

www.oursolid.com

NINGBO OURSOLID COMPOSITE MATERIAL CO.,LTD.

ADD:No.243,Yingzhou Road ,Juexi Street,Xiangshan, Ningbo,Zhejiang,China

Zip:315708

Tel:86-574-88394393

Fax:86-574-88394398

E-mail:steve@oursolid.com

<http://www.oursolid.com>

<http://cnoursolid.1688.com>

宁波索力特复合材料有限公司

地址：浙江省宁波市象山县爵溪街道瀛洲路 243 号

电话：0574-88394393

传真：0574-88394398

邮编：315708

邮箱：steve@oursolid.com

网站：www.oursolid.com

cnoursolid.1688.com



Acknowledgement:

The information and data, contained in the catalogue, are induced by our understanding of the the stated products. These information and data are only references during the user designation and application. The designation and application data provided by OURSOLID could not be directly applied to the real application conditions. A specific test is recommended for the practical application environment to ensuring the suitable use of OURSOLID products. Any damages or lost caused by improper use of OURSOLID bearing will not be warranted by OURSOLID. Due to the materials and techniques are continuously updated, we reserve the rights to change the necessary data and information without advanced notice in time.

声明:

本产品目录中的信息数据是基于我们对 OURSOLID 产品的现有了解，仅作为用户设计参考使用；本产品目录中的信息数据不能直接引用至用户实际工况。OURSOLID 建议用户通过特定的试验来验证 OURSOLID 产品是否适用于用户实际工况。对于使用 OURSOLID 产品所可能导致的任何损失，OURSOLID 公司不承担赔偿责任。由于材料的产品技术不断更新，我们保留变更产品信息数据的权利。